

# iriver

## T10

<http://www.iriveramerica.com>

# Instruction Manual

## T10

Thank you for your purchase.  
Please read this manual carefully  
before using your new player.

iriver [www.iriveramerica.com](http://www.iriveramerica.com)

*Firmware Upgradable™*





**Before using the product**

|   |    |
|---|----|
| Welcome .....   | 03 |
| Homepage .....  | 03 |
| Copyrights/Certification/Trademarks/Limited Liability ..... | 04 |
| Safety Instructions .....                                   | 05 |

**Chapter 1 | Getting started**

|                               |    |
|-------------------------------|----|
| Features of the T10 .....     | 09 |
| Components .....              | 11 |
| Location of Controls .....    | 12 |
| LCD display .....             | 13 |
| Connection/Installation ..... | 14 |

**Chapter 2 | Quick start**

|                   |    |
|-------------------|----|
| Basic Usage ..... | 19 |
|-------------------|----|

**Chapter 3 | Basic operation**

|                    |    |
|--------------------|----|
| MUSIC .....        | 23 |
| BROWSER .....      | 31 |
| IMAGE VIEWER ..... | 33 |
| FM RADIO .....     | 34 |
| RECORDING .....    | 39 |

**Chapter 4 | Useful features**

|   |    |
|---|----|
| Menu Configuration .....                | 43 |
| Menu Operation .....                    | 44 |
| Customizing the function settings ..... | 46 |

**Chapter 5 | Customer Support**

|                          |    |
|--------------------------|----|
| Firmware Upgrade .....   | 63 |
| Troubleshooting .....    | 64 |
| Specification .....      | 65 |
| Safety Information ..... | 66 |
| FCC Certification .....  | 67 |



## Welcome

### Thank you for your iriver purchase

Thank you for your iriver purchase.

The T10 comes complete with a long list of advanced features. It is important that you read the manual to ensure that you get the most out of your new player.

<http://www.iriveramerica.com>



**Obtain information about your player, look for updates, and find answers to questions at our web site.**

- iriver website address is [www.iriveramerica.com](http://www.iriveramerica.com).
- The site provides product information and customer support.
- Use the firmware (system software) upgrade function of our products from the site to continuously improve the product performance.



## Copyrights/Certification/Trademarks/Limited Liability

### Copyrights

- iriver Limited has all the rights of the patent, trademark, literary property and intellectual property related to this manual. You may not reproduce any part of this manual unless authorized by iriver Limited. You can be punished by using any part of this manual illegally.
- The software, audio and video which have an intellectual property are protected by copyright and international laws. It is user's responsibilities when he/she reproduce or distribute the contents created by this product.
- The companies, institutions, products, people and events used in examples are not real data. We don't have any intension to be related with any companies, institutions, products, people and events through this manual and should not draw inferences. User's are responsible for observing the copyrights and intellectual properties.

©1999~2005 iriver Limited, All rights reserved

### Certification

CE, FCC, MIC

### Trademarks

- Windows 2000, Windows XP and Windows Media Player are the registered trademarks of Microsoft Corp.
- **SRS** is a trademark of SRS Labs, Inc. WOW technology is incorporated under license from SRS Labs, Inc.

### Limited Liability

- Neither the Manufacturer, importers nor dealers is responsible for any accidental damage including bodily injury or any damage resulting from misuse or unsuitable operation by you.
- The information on this manual is prepared with the current player specifications. The manufacturer, iriver Limited, is adding new features to the product and may persistently apply new technologies hereafter. All standards may be changed at any time without notice.

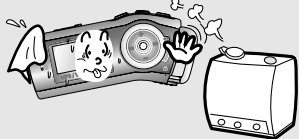


## Safety Instructions

For your safety, please read before use.

### Product

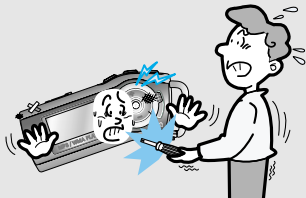
Keep away from harsh environments including humid, dusty, and smoky areas.



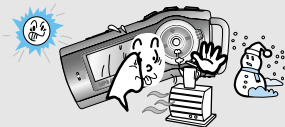
Do not drop or subject the device to impact.



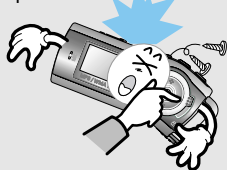
Do not disassemble or modify.



Keep out of direct sunlight and extreme heat and cold.



Do not use excessive force on the buttons or attempt to disassemble the device.



Do not clean using chemicals or detergents. Doing so may damage the surface or paint.

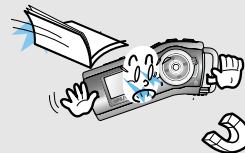


## Safety Instructions

For your safety, please read before use.

### Product

Do not drop or subject the device to impact. Keep the player away from strong magnets.



Avoid contact with water and other liquids and dry immediately with a soft cloth should contact occur.



Do not use headphone / earphones at high volume. Hearing experts advise against listening to continuous, loud and extended play.



Do not use headphones / earphones while cycling, driving, or operating any motorized vehicle. It is dangerous and is illegal in some areas.



Avoid impacting the player against other objects when it is in your pocket or backpack.



External impact, lightning, power shorts or other events may damage the data stored in the product. The user is solely responsible for data backup and the company will not be liable for loss of stored data under any circumstances.





## Chapter

# 1

|  |    |
|--|----|
| Features of the T10 .....                    | 09 |
| Components .....                             | 11 |
| Locating the controls .....                  | 12 |
| Product .....                                | 12 |
| LCD Screen display .....                     | 13 |
| Connection/Installation .....                | 14 |
| Connecting to the PC .....                   | 14 |
| Safely Removing the player from the PC ..... | 15 |
| Connecting the earphones .....               | 16 |
| Replacing the battery .....                  | 16 |
| WMP 10 installation .....                    | 17 |



## Features of the T10

- 1.01 inch 65,000 color CSTN LCD display.**

---

Superior color icons and menus previously unavailable are provided for a better user experience.
- Simple usage - Easy Navigation**

---

T10 supports a maximum of 500 folders, 1,000 files and 8 folder levels structure for easier search.
- Multi-Codec Player**

---

Supports MP3, WMA, OGG and ASF formats.
- Fast file transfer - Supports USB 2.0**

---

The system supports a 480 Mbps USB 2.0 interface to maximize the portable data storage feature.
- Firmware Upgradable**

---

Provides the latest updated features via firmware upgrade.



## Features of the T10

- Magnificent 3D sound - SRS WOW sound effect**

---

Experience the magnificent 3D and rich base sounds with the industry-recognized SRS WOW technology.
- 10 Preset and 1 User set equalizer**

---

Select one of the 10 preset EQs (CLASSIC, LIVE, POP, ROCK, JAZZ, U BASS, METAL, DANCE, PARTY, SRS) or set your own with the User EQ.
- Built in FM tuner and FM recording.**

---

Easy radio listening, with automatic search and frequency memory functions. Superior technology for searching reception while moving will enhance your experience.
- Voice recording**

---

Supports voice recording with high performance internal microphone.



**Components** • Accessories subject to change without notice and may vary from image shown.

Earphone



USB cable



Installation CD



User Manual/ Warranty card/Quick Start Guide



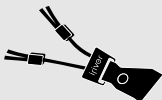
Battery(AA Type, 1EA)



Carrying Case

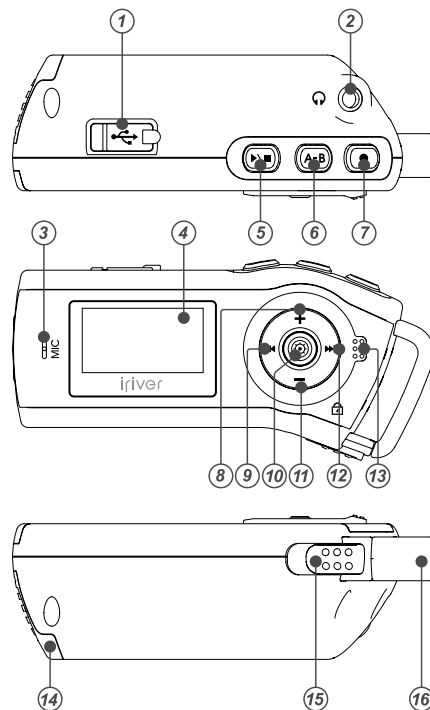


Neck strap for carrying



**Locating the controls** • Your player may differ slightly from that shown in the illustrations.

## Product



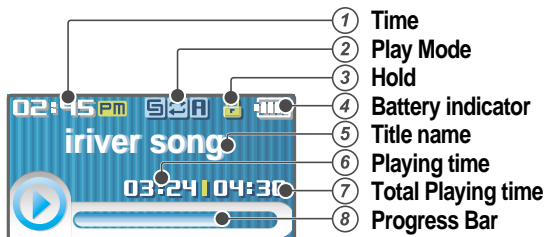
- ① USB connection port
- ② Earphone Jack
- ③ Microphone
- ④ LCD Screen
- ⑤ Play/Stop button
- ⑥ A-B (Interval repeat) button
- ⑦ Recording button
- ⑧ Volume + button
- ⑨ Previous/Fast Reverse button
- ⑩ NAVI/MENU button
- ⑪ Volume - button
- ⑫ Next/Fast forward button
- ⑬ Hold Switch button
- ⑭ Battery cover
- ⑮ Neck Strap Locker
- ⑯ Neck Strap



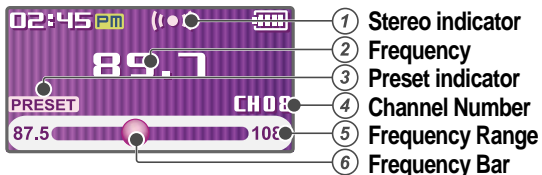
## Locating the controls

### LCD Screen display

#### 1. MUSIC Mode



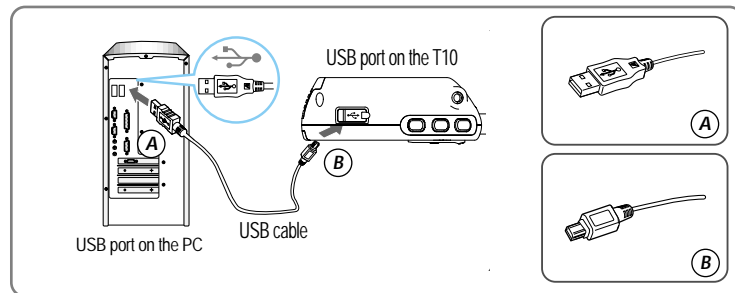
#### 2. FM RADIO Mode



## Connection/Installation

### Connecting to the PC

1. Connect the USB cable(provided) to the USB port on the player and to your PC.



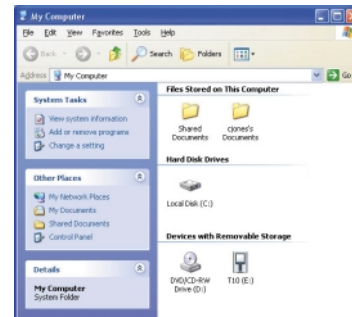
2. Turn on the player, "USB Connect" icon will appear on the LCD screen of the player.



3. Windows Tray will display a "Device Attached" icon.



4. Once installed, open Windows Explorer and an additional drive should be listed called "T10".



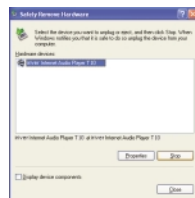
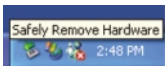




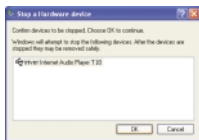
## Connection/Installation

"Safely Remove Hardware" from the PC

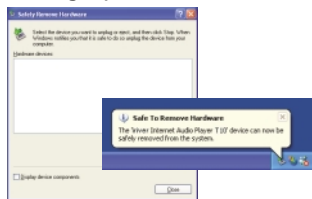
1. Select the "Safely Remove Hardware" after clicking the "Safe To Remove Hardware" by right-clicking your mouse.
2. Click the "Stop" after selecting the device to remove.



3. Click "OK" after confirming the hardware to remove.



4. Click "Close" after confirming the Safely Remove Hardware message. (In case of Windows XP)



### Note

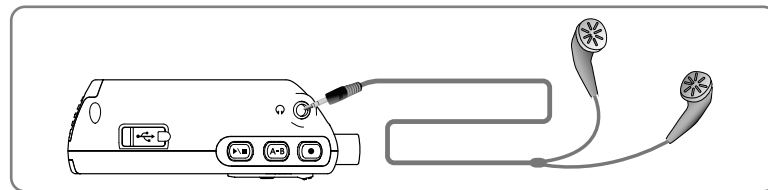
- The tray icon may be hidden in some Windows XP operating system settings. Click the "Display hidden icon" to view the hidden icon.
- Hardware safe removal may not be available while using some applications such as Windows Explorer or Windows Media Player. Please close all applications using the product before the hardware safe removal process.
- In some Windows XP operation system settings, hardware safe removal is temporarily unavailable due to some internal system communication. Please wait and try again.



## Connection/Installation

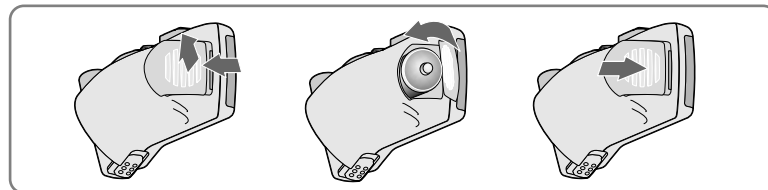
Connecting the earphones

1. Connect the earphones jack to the earphone socket on the player.



Replacing the battery

1. Open the battery cover.
2. Insert the battery. (AA 1.5V type x 1ea)  
Be sure to match the + and - ends of the battery with the diagram inside the battery compartment.
3. Close the battery cover.



### Note

- To avoid corrosion, remove the battery if the player is not to be used for a long time.
- Remove dead battery immediately to avoid damage from corrosion.
- When corrosion occurs, wipe the battery compartment immediately with a dry cloth and insert a new battery.



## Connection/Installation

### WMP 10 installation

1. The program installation process will start automatically after inserting the Installation CD to the PC's CD-ROM drive. Click the [OK] button and follow the on screen instructions which appear as each window..



## Quick start

### Chapter

# 2

|                                   |    |
|-----------------------------------|----|
| Basic Usage .....                 | 19 |
| Turning on/off the player .....   | 19 |
| Playing a music file .....        | 19 |
| Adjusting the volume .....        | 20 |
| Selecting the function mode ..... | 20 |



## Basic Usage

### Turning on/off the player



#### 1 Turning on the player

Press the **▶|■** button to turn on the player.

Previous function mode will be displayed.



#### Note

- If the player does not power ON, please replace your battery.



#### 2 Turning off the player

Press and hold the **▶|■** button.

Turn off the player.



### Playing a music file



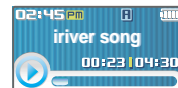
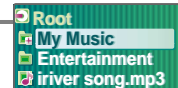
#### 1 When powered on, press and hold **⚙** button to display the function mode screen.

Press **⏪**, **⏩** button to choose the desired function mode. Press **⚙** button to enter.



#### 2 Press **⏪**, **⏩** button to choose the desired music file.

Press **⚙** button to start playback.



## Basic Usage

### Adjusting the volume



#### 1 Adjusting the volume

During the music file playback, press **+**, **-** button to adjust volume level.

- +** : Increase volume level.
- : Decrease volume level.



### Selecting the function mode

1 When powered on, press and hold **⚙** button to display the function mode screen.

Press **⏪**, **⏩** button to choose the desired function mode.

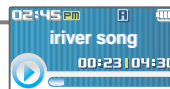


#### Note



2 Press **⚙** button to enter.

Press **▶|■** button to cancel.





## Chapter

# 3

|   |    |
|---|----|
| <b>MUSIC</b> .....                            | 23 |
| Playing a music file .....                    | 23 |
| Changing playback mode .....                  | 25 |
| A-B Repeat .....                              | 26 |
| Changing the sound EQ .....                   | 26 |
| Playlist function .....                       | 27 |
| Download Music & Playlists .....              | 28 |
| Deleting a file or folder on the player ..... | 30 |
| <b>BROWSER/IMAGE VIEWER</b> .....             | 31 |
| <b>BROWSER</b> .....                          | 31 |
| <b>IMAGE VIEWER</b> .....                     | 32 |
| <b>Adding image file to player</b> .....      | 32 |
| <b>FM RADIO</b> .....                         | 34 |
| Listening to FM radio .....                   | 34 |
| Searching for a frequency - Manual Scan ..... | 35 |
| Searching for a frequency - Auto Scan .....   | 35 |
| Saving for a frequency - Manually .....       | 36 |
| Saving for a frequency - Automatically .....  | 37 |
| Selecting preset memory .....                 | 37 |
| Deleting a channel .....                      | 38 |
| <b>RECORDING</b> .....                        | 39 |
| To record FM station .....                    | 39 |
| Recording voice .....                         | 40 |
| Note for recording .....                      | 41 |
| To play a recorded file .....                 | 41 |



## MUSIC

## Playing a music file

**1** Release HOLD switch, then press and hold **▶|■** button to turn on the player.  
Previous function mode will display.

**2** Press and hold **⊙** button to display the function mode screen.  
Press **◀▶** button to select [MUSIC] mode, then press **⊙** button to enter.

**3** Use the **◀▶**, **+**, **-** buttons to select a music file.  
◀▶ : to go the upper folder  
▶▶ : to go the sub folder  
+ - : to select a file  
To exit file list screen, press **▶|■** button.



## MUSIC

## Playing a music file

**4** Press the **⊙** button to start music playback.  
Press **▶|■** to pause music playback.  
Press **▶|■** again to continue playing.

**5** Adjusting the volume  
During the music file playback, press **+**, **-** button to adjust volume level.  
+ : Increase volume level.  
- : Decrease volume level.

**6** Skipping to previous/next file  
During the music file playback, press **◀▶**, **▶▶** button to skip to the previous/next file  
◀▶ : previous file   ▶▶ : next file

**7** Fast searching  
Press and hold the **◀▶**, **▶▶** button for fast-forward or fast-reverse playback.  
◀▶ : fast-rewind   ▶▶ : fast-forward  
Release the button for normal playback.

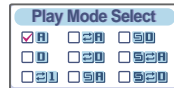


## MUSIC

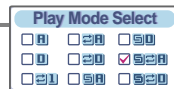
## Changing playback mode



- 1 While playing a music file, press the **●** button to display the playback mode select screen.



- 2 Press the **⏮**, **⏭**, **+**, **-** button to select desired playback mode.



The playback mode is changed to the selected mode.



## Note

- The following the icons displayed to indicate playback mode.

|                              |  |   |
|------------------------------|--|---|
| Normal playback              |  | Play all files in the player, then stop.                  |
|                              |  | Play all files in the current folder, then stop.          |
| Repeat playback              |  | Play a single file repeatedly.                            |
|                              |  | Play all files in the current folder repeatedly.          |
| Shuffle playback             |  | Randomly play all files in the player, then stop.         |
|                              |  | Randomly play all files in the current folder, then stop. |
| Shuffle playback repeatedly. |  | Randomly play all files in the player repeatedly.         |
|                              |  | Randomly play all files in the current folder repeatedly. |



## MUSIC

## A-B Repeat



- 1 Press **A-B** button while playing to select the beginning (A) point.



- 2 Press **A-B** button again to select the end (B) point.



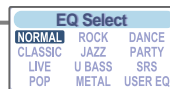
Play a selected interval repeatedly.

To cancel interval repeat, press the **A-B** button.

## Changing the sound EQ



- 1 During the music file playback or pause, press **A-B** button, to display the EQ SELECT screen.

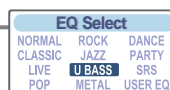


## Note

- You can select one of the following EQ types:  
NORMAL, CLASSIC, LIVE, POP, ROCK, JAZZ, U BASS, METAL,  
DANCE, PARTY, SRS, USER EQ



- 2 Press the **⏮**, **⏭**, **+**, **-** button to select desired sound EQ.



The sound is changed to the selected EQ.



## MUSIC

### Playlist function

#### What is a Playlist?

A Playlist is a list of the songs that enables you to manage the titles, or other audio files. Now you can play the music at any time and any place.

Playlists created within Windows Media Player may be copied and played with the T10.

#### Note

- In case of selecting <Playlists>
  - My Rating  
Plays titles in designated rating order.
  - My Favorites  
Plays titles by playback frequencies.
  - Recently Played  
Plays titles in recently played order.
  - My Playlist  
Listen to playlists synced from Windows Media Player.
  - Quick List  
User programmable on-the-fly playlist.
- To load the Quick List:
  - Locate a title using the <MUSIC>-menu.
  - Press and hold [ ● ] to add it to the Quick List.
  - 'Added Quick List!' will be displayed.
  - Repeat to add more titles to the Quick List.
  - Use the <Playlists>-menu to see the Quick List.
  - Press [ ⚙ ] button to play it !



## MUSIC

### Download Music & Playlists

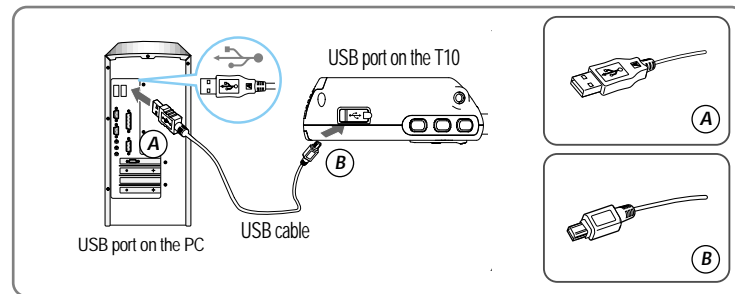
#### Get the latest version of Windows Media Player

In order to copy music & playlists to your player, you must use Windows Media Player 10. The installation CD-ROM should include the proper version of Windows Media Player.

Windows Media Player 10 can also be found online at : [www.microsoft.com/windowsmedia/download/](http://www.microsoft.com/windowsmedia/download/)

Please note, purchased music can only be copied to this player using Windows XP and the latest version of Windows Media Player.

#### 1. Connect the USB cable to the USB port on the player and to your PC.



#### 2. Open Windows Media Player.

- a. Click Start -All Programs -Accessories - Entertainment -Windows Media Player.
- b. Click "Library" from the menu button near the top of the screen..

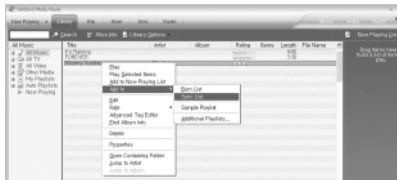
Most of your music should be listed in this library. If not, check Windows Media Player help for more information about the library.



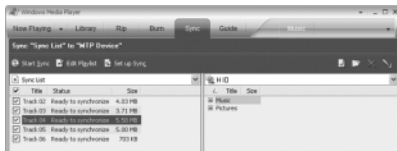


## MUSIC

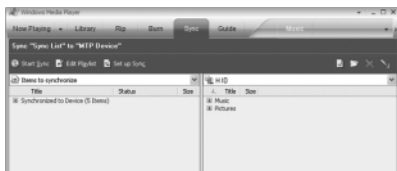
3. Locate a Song or Playlist in the Library and Right-Click on it.  
Select "Add to -Sync List".  
A "Sync list" will appear on the right side of windows Media Player listing all the Songs & Playlists to be added to your player.  
Repeat for all the songs or playlists you would like to add to your player.



4. Click the "Sync" menu button.  
On the right side the Sync screen choose the T10 from the download list.



5. Click Start Sync to transfer the songs or playlists on to the T10 player.  
When complete, copied songs will appear in the "Synchronized to Device" list on the left side of Windows Media Player and in the specified folder on the right side of the screen.



Disconnect the player from your computer and enjoy your music!






If you prefer to Auto Sync, please select "Auto Sync" in the menu of Set Up Sync.  
You can download music and playlists.







## MUSIC

## Deleting a file or folder on the player



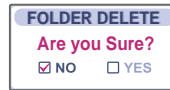
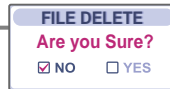
- 1 While in stop mode, press the  button to display music list screen.  
Select a file or folder to delete by using the , , ,  button.





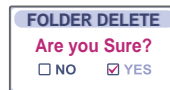
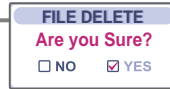
 : to go the upper folder  : to go the sub folder  
,  : to select a file



- 2 Click the A-B button.  
"File or Folder delete are you sure?" is displayed on the screen.



- 3 Select "YES" by using the ,  button to delete, then press NAVI/MENU button.  
File or folder is deleted on the player.



## Note

- You can only delete an empty folder.





## BROWSER

### BROWSER



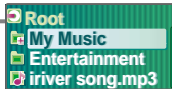
**1** Press and hold button to display the function mode screen.



Press , button to select [BROWSER] mode, then press button to enter.



**2** File list screen is displayed on the LCD screen.



## IMAGE VIEWER

### IMAGE VIEWER



**1** While BROWSER mode, select a image file by using the , , , button.



Press the button to view .



: to go the upper folder : to go the sub folder

, : to select a file

: to execute image viewer

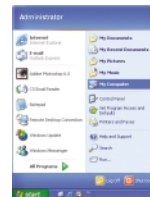


#### Note

- Image file may not display if file is damaged.
- Only 4/8/16/24 bit Mono/Color BMP file can be displayed.
- RLE type BMP file is not supported.

### Adding image file to player

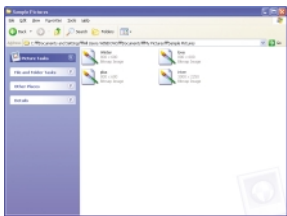
1. Connect the player and PC using the cable supplied with the player and power it on. (Refer to page 14.)
2. Open "Start - My Computer".



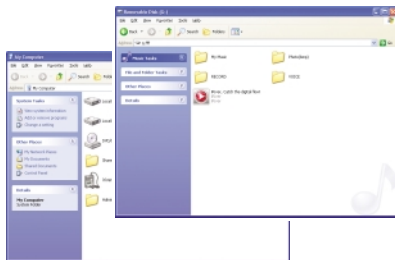


## IMAGE VIEWER

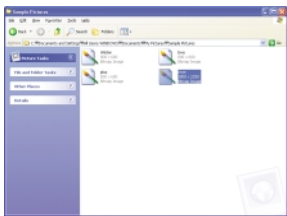
3. Locate your image files(BMP), usually found in "My Documents" then "My Pictures", keep this folder open.



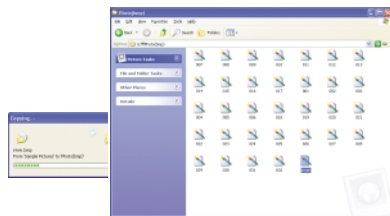
4. Open a second My Computer window. Double click on the T10 device.



6. To get images on the player, click and drag the image files from your PC to the T10 device.



7. A progress window will appear while files are copying.



8. Disconnect the USB cable once all copying has finished.



## FM RADIO

### Listening to FM radio



- 1 Press and hold  button to display the function mode Screen.

Press the ,  button to select [FM RADIO], then press the  button to confirm.

The previous station is displayed.



- 2 Press the ,  button to select your desired station.



- 3 To change STEREO/MONO

Press the  button to change Stereo or Mono.

The station is changed to stereo or mono.



### Note

- In areas where the signal is weak, some channels may be unavailable, or reception may be poor.



## FM RADIO

### Searching for a FM radio frequency - Manual Scan



**1** If PRESET is displayed, first press the button to exit PRESET mode.



Press the , button to select your desired station.



### Searching for a FM radio frequency - Auto Scan



**1** If PRESET is displayed, first press the button to exit PRESET mode.



To automatically locate a station press and hold the , button.

The player will quickly scan through each frequency and stop at the next station that can be tuned in.



#### Note

- While in Preset mode, auto scan functions are not available.



## FM RADIO

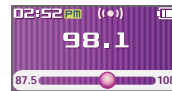
### Saving an FM Radio frequency - Manually



**1** If PRESET is displayed, first press the button to exit PRESET mode.



Press the , button to select your desired station.

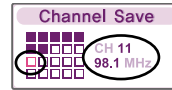
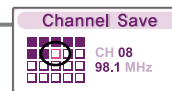


**2** Press the button to display Channel Save screen.



Press the , , , button to select your desired channel number.

: Used : not used



**3**

Press the button to save.

To exit the Channel Save screen, press the button.



#### Note

- Up to 20 stations can be saved.



## FM RADIO

### Saving an FM Radio frequency - Automatically



**1** If PRESET is displayed, first press the button to exit PRESET mode.



**Press and hold the A-B button to automatically select stations and save them in sequential order.**



### Selecting preset memory



**1** If PRESET is not displayed, first press the button to enter PRESET mode.



**Press the , button to select your desired channel.**



#### Note

- When the player does not have any preset stations, EMPTY will be displayed at Preset mode, then fade out.

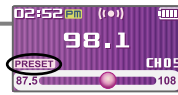


## FM RADIO

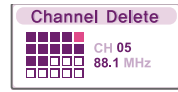
### Deleting a channel



**1** If PRESET is not displayed, first press the button to enter PRESET mode.



**Press the A-B button to display CHANNEL DELETE screen.**



**2** Select the channel to delete by using the , , , button.

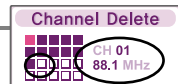


You can delete only used channel.

- : Used channel : Selected channel
- : not used channel



**3** Press the A-B button to delete selected channel.



**Press the button to exit Channel Delete screen.**



#### Note

- When the player does not have any preset stations, EMPTY will be displayed when pressing the button.



## RECORDING

## To record FM station

|  |   |  |
|--|---|--|
|  | <p><b>1</b> Press and hold the  button to display function mode screen.<br/>Select the [FM RADIO] by using the ,  button, then press  button.</p>   |  |
|  |   |  |
|  |   |  |
|  | <p><b>2</b> Press the  button during FM reception.<br/>The station will be recorded.</p> <p>Press  button to pause the recording process.<br/>Press  button again to restart recording.</p> |  |
|  |   |  |
|  | <p><b>3</b> Press the  button again to stop recording.<br/>The recorded file is saved.</p>  |  |

## Note

- The recorded file is saved as TMMDDXXX.MP3 in the RECORD folder.  
(T:Tuner, MM:Month, DD:day, XXX:sequential number)
- Volume can not be controlled while recording.
- You can adjust recording quality at the SETTINGS-RECORDING-FM SETTING.(Refer to page 52)



## RECORDING

## Recording voice

|  |   |  |
|--|---|--|
|  | <p><b>1</b> Press and hold the  button to display function mode screen.<br/>Select the [RECORDING] by using the ,  button, then press  button.<br/>The recording standby screen is displayed.</p> |  |
|  |   |  |
|  |   |  |
|  | <p><b>2</b> Press the  button to begin recording.<br/>Press  button to pause the recording process.<br/>Press  button again to restart recording.</p>   |  |
|  |   |  |
|  | <p><b>3</b> Press the  button to stop recording.<br/>The recorded file is saved and then the recording standby screen is displayed.</p>   |  |

## Note

- The recorded file is saved as VMMDDXXX.MP3 in the VOICE folder.  
(V:Voice, MM:Month, DD:day, XXX:sequential number)
- Volume can not be controlled while recording.
- You can adjust recording quality at the SETTINGS-RECORDING-VOICE SETTING.(Refer to page 52)



## RECORDING

### Note for recording

The recording will be stop if




- the amount of recorded data exceeds the capacity.
- the battery is low.

### To play a recorded file








**1** Press and hold the  button to display function mode screen.



Select the [BROWSER] by using the , , then press  button.



**2** Select a recorded file in the RECORD or VOICE folder by using the , , ,  button, then press  button.



The selected file will begin playing back.



## Useful features

# Chapter

# 4

Menu configuration ..... 43

Menu operation ..... 44

Enter Settings Menu ..... 44

Enter Sub Menu ..... 44

Set the menu functions ..... 45

Exit sub menu ..... 45

Customizing the function settings ..... 46

Sound ..... 46

Display ..... 47

Recording ..... 52

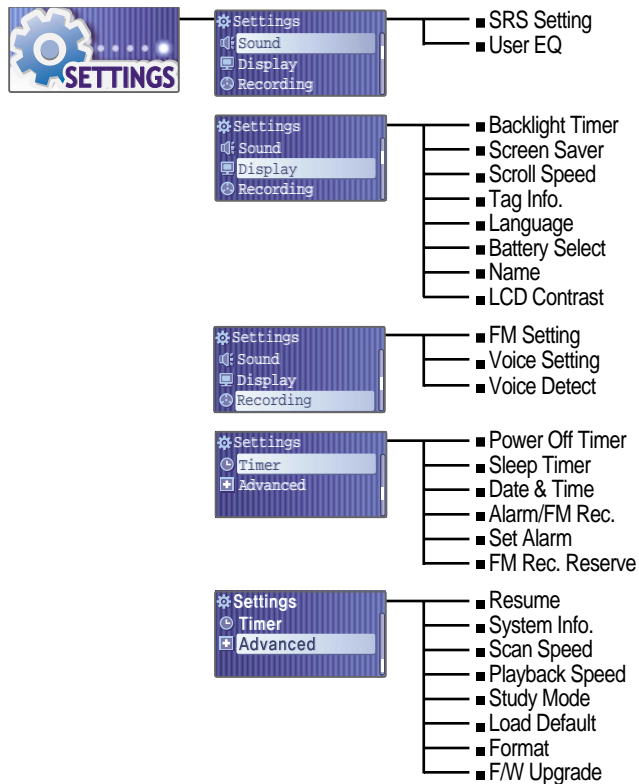
Timer ..... 54

Advanced ..... 57



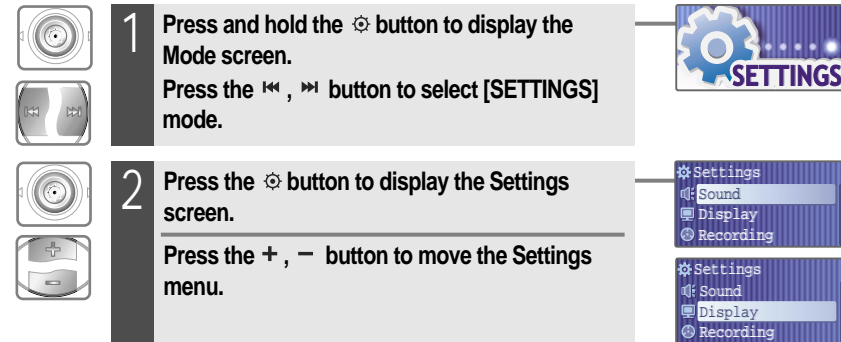
## Menu configuration

- Functions are subject to change with different firmware versions.
- Users can configure their own settings.

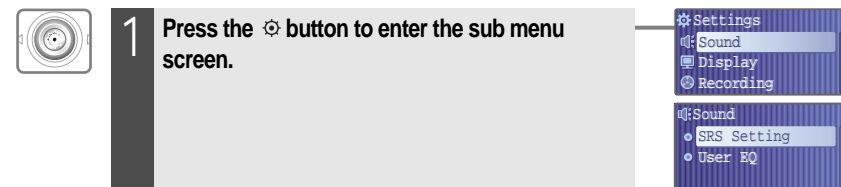


## Menu operation

### Enter Settings Menu




### Enter Sub Menu



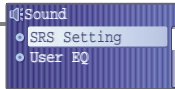



## Menu operation

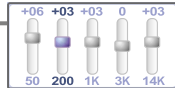

### Set the menu functions

- 

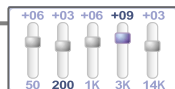
Press the **+**, **-** button to select sub menu.


- 


Press the **⚙** button to enter Sub Menu setting screen.


- 


You can set, cancel or change sub menu by pressing the **⏪**, **⏩**, **+**, **-**, **⚙** button.



### Exit sub menu

- 

Press the **▶◀** button to exit sub menu.





## Customizing the function settings (Menu)

### Sound

#### 1. SRS Setting

Sets the 3D sound effect. SRS, FOCUS, TruBass, and Boost are available.

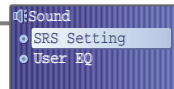
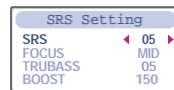
SRS : Adjust the SRS value.

FOCUS : Adjust the sound resolution value.

TRUBASS : Adjust the TruBass value.

BOOST : Adjust the sound boost value.

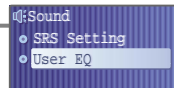
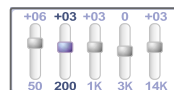
Use proper boost value depends on the earphones or headphone characteristics.

#### 2. User EQ

You can adjust the sound to your preference.

There are 5 band frequency steps, set from <-15dB> ~ <+15dB> by 1dB increments.





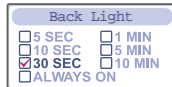
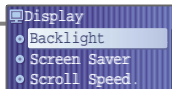
## Customizing the function settings (Menu)

### Display

#### 1. Backlight

You can adjust the time that the Backlight stays on.

The Backlight can be set to: <5 SEC>, <10 SEC>, <30 SEC>, <1 MIN>, <5 MIN>, <10 MIN> or <ALWAYS ON>.

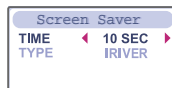
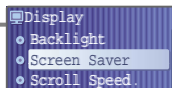


#### 2. Screen Saver

Automatically display screen saver after a selected time at playback mode.

The TIME can be set to : <5 SEC>, <10 SEC>, <20 SEC>, <30 SEC>, <1 MIN>, <2 MIN>, <3 MIN> or <5 MIN>

The TYPE can be set to : <IRIVER>, <SPECTRUM> or <WAVEFORM>.



## Customizing the function settings (Menu)

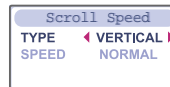
### Display

#### 3. Scroll Speed

Select scroll type and speed of the current title playback information.

The scroll type can be set to : <SCROLL>, <VERTICAL> or <HORIZONTAL>.

The scroll speed can be set to : <SLOW>, <NORMAL> or <FAST>.



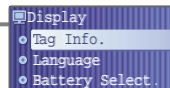
#### 4. Tag Info.

While playback mode, you can display the information of music file by using ID3 Tag.

You can set <ON> or <OFF> .

Off : Display track with file name

- File name will be displayed by default for songs with no ID3 information





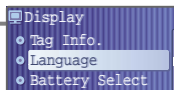
## Customizing the function settings (Menu)

### Display

#### 5. Language

Select the language to display the file name and ID3 tag information.

Support 40 languages.

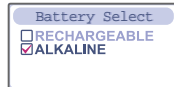
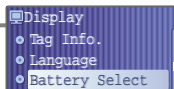


#### 6. Battery Select

Select the current battery.

You can set <RECHARGEABLE> or <ALKALINE>.

The player will manage the battery indicator icon to better match the usage level.



## Customizing the function settings (Menu)

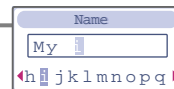
### Display

#### 7. Name

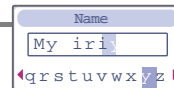
You can input your name or custom text.



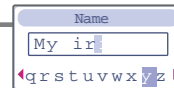
1 Select the character by using ◀, ▶ button and press ⚙ button to input the character.



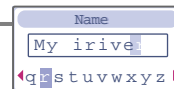
2 To move the cursor in the name window, use +, - button.



3 To delete the character, press ● button.  
To scroll between English and your preferred language, use A-B button.



4 Press and hold ⚙ button to save and exit.





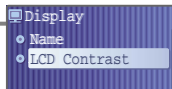
## Customizing the function settings (Menu)

### Display

#### 8. LCD Contrast

Adjust the LCD screen contrast.

The LCD contrast can be adjust from <-10> to <+10>.

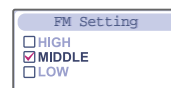
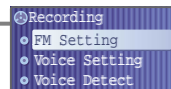


## Customizing the function settings (Menu)

### Recording

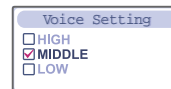
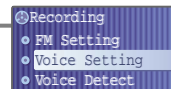
#### 1. FM Setting

You can set recording quality (<HIGH>, <MIDDLE> or <LOW>) when recording FM.



#### 2. Voice Setting

You can set recording quality (<HIGH>, <MIDDLE> or <LOW>) when recording voice.





## Customizing the function settings (Menu)

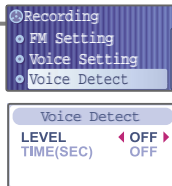
### Recording

#### 3. Voice Detect

The voice recording mode will automatically pause during silence. This is useful for recording over a long period of time to save memory.

LEVEL : Set the relative level of sound needed to activate the recorder. (<OFF>, <01>, <02>, <03>, <04> or <05>)

TIME(SEC) : Set the number of seconds of silence to record before pausing. (<OFF>, <01>, <02>, <03>, <05> or <10>)



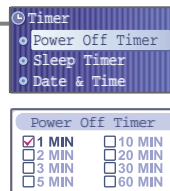
## Customizing the function settings (Menu)

### Timer

#### 1. Power Off Timer

Automatically turns the power off at the stop mode.

Time range can be set from <1 MIN>, <2 MIN>, <3 MIN>, <5 MIN>, <10 MIN>, <20 MIN>, <30 MIN> or <60 MIN>.

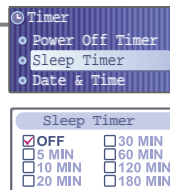


#### 2. Sleep Timer

Automatically turns the power off after a fixed time.

Time range can be set from <OFF>, <5 MIN>, <10 MIN>, <20 MIN>, <30 MIN>, <60MIN>, <120 MIN> or <180 MIN>.

OFF : Sleep timer function does not activate.



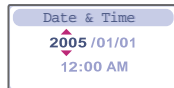
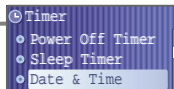


## Customizing the function settings (Menu)

### Timer

#### 3. Date & Time

Set the current date and time.



#### 4. Alarm/FM Rec.

**OFF** : The Alarm and FM Record functions are disabled and the player will not power on at either indicated time.

**ALARM** : At the time indicated in the "Set Alarm" setting the player will power on and begin music playback.

**FM RECORDING** : At the time indicated in the "FM Rec. Reserve" setting the player will power on and begin recording from the selected radio station.

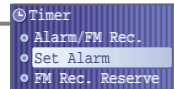


## Customizing the function settings (Menu)

### Timer

#### 5. Set Alarm

Set the alarm time.



#### 6. FM Rec. Reserve

Set the time and station to be recorded.



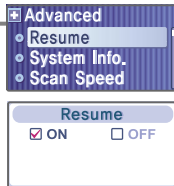


## Customizing the function settings (Menu)

### Advanced

#### 1. Resume

**ON** : Playback will resume from the previous location in a song when the player is stopped or powered off.  
**OFF** : Playback begins from the first track after the player is stopped or powered off.



#### 2. System Info.

You can check the firmware version information, free space memory and total number of tracks.

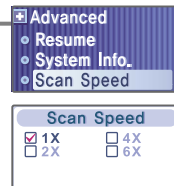


## Customizing the function settings (Menu)

### Advanced

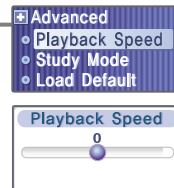
#### 3. Scan Speed

**Adjust the speed of FF/RW(fast-forward/fast-rewind).**  
 The Scan Speed can be set from <1X>, <2X>, <4X> or <6X>.



#### 4. Playback Speed

**Adjust the speed of playback.**  
 The Playback Speed can be set from <-5 > to <+5>.





## Customizing the function settings (Menu)

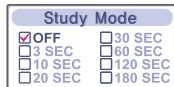
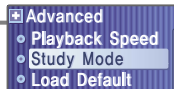
### Advanced

#### 5. Study Mode

While playing, press and hold ⏮, ⏭ button will skip the current track set time ahead.

Time range can be set from <OFF>, <3 SEC>, <10 SEC>, <20 SEC>, <30 SEC>, <60 SEC>, <120 SEC> or <180 SEC>.

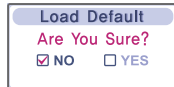
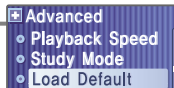
OFF : Study Mode function does not activate.



#### 6. Load Default

Reset menus to the original factory settings.

■ When the Load Default is done, the player will be rebooted automatically.



## Customizing the function settings (Menu)

### Advanced

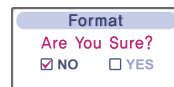
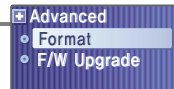
#### 7. Format

Memory is formatted and all saved files are deleted.

Before formatting can begin, you must backup all data stored on the player.

Care must be taken as formatted files can not be recovered.

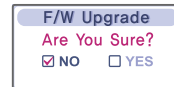
■ When the Format is done, the player will be rebooted automatically.



#### 8. F/W Upgrade

Upgrade the operating system of T10.

Refer to 63 page "Firmware Upgrade" for details.



#### Note : What is Firmware?

- It is the operating system that works in the T10.
- Iriver provides you with the latest and best features through firmware upgrade.
- Visit [www.iriveramerica.com](http://www.iriveramerica.com) to upgrade your firmware.



*Chapter*

5

|                                 |           |
|---------------------------------|-----------|
| <b>Firmware Upgrade</b> .....   | <b>63</b> |
| <b>Troubleshooting</b> .....    | <b>64</b> |
| <b>Specification</b> .....      | <b>65</b> |
| <b>Safety Information</b> ..... | <b>66</b> |
| <b>FCC Certification</b> .....  | <b>67</b> |





## Firmware Upgrade

### Firmware Upgrade

**1** Download the latest firmware upgrade file from [www.iriveramerica.com/support](http://www.iriveramerica.com/support).

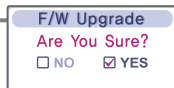
**2** Unzip the downloaded firmware file(T10.HEX), then copy to root folder on the player. Disconnect the USB cable .

**3** **Activating the Firmware Upgrade**  
Execute [Settings] and choose [Advanced] → [F/W Upgrade].



**4** Choose F/W Upgrade <YES> to confirm the action and press the button.

When the upgrade is done, turn the player off. After turning the player on, confirm the Firmware Upgraded operating.



#### Note

- Before upgrading the firmware, check the condition of the battery. The firmware upgrade may fail due to battery power shortage.
- Do not turn the player off until the upgrade is completed.
- When the upgrade is completed, the firmware file(T10.HEX) will be deleted automatically.



## Troubleshooting

Should any problem persist after you have checked these symptoms, consult your iriver dealer or contact support at [www.iriveramerica.com](http://www.iriveramerica.com).

| Trouble                                 | Solution   |
|---|--|
| No Power.                               | <ul style="list-style-type: none"> <li>■ Check whether the HOLD switch on the player is ON (Switch to OFF position)</li> <li>■ Check the condition of the battery. Insert a fresh battery.</li> </ul>  |
| No sound or distortion during playback. | <ul style="list-style-type: none"> <li>■ Check whether VOLUME is set to "0".</li> <li>■ Firmly connect the earphones.</li> <li>■ Check whether the plug is dirty. Clean the plug with a dry and soft cloth.</li> <li>■ Corrupted MP3 or WMA files may make a static noise and the sound may cut off. Listen to your files on the PC to see if they are corrupted.</li> </ul> |
| Characters in LCD are corrupted.        | <ul style="list-style-type: none"> <li>■ Check out SETTINGS→Display→Language and confirm whether the right language has been selected.(Refer to page 49)</li> </ul>  |
| Poor FM Reception.                      | <ul style="list-style-type: none"> <li>■ Adjust the position of the player and earphones.</li> <li>■ Turn off the power of other electric devices near the player.</li> <li>■ The Earphone cord functions as the antenna, they must be plugged in for best reception.</li> </ul>   |
| Failed download of MP3 file             | <ul style="list-style-type: none"> <li>■ Check the condition of the battery.</li> <li>■ Check the connection between your computer and the player to ensure that the cable is secure.</li> <li>■ Check the Manager program to make sure it is operating.</li> <li>■ Check whether the player's memory is full.</li> </ul>  |



## Specifications

| Memory Capacity | 256 MB*   | 512 MB*   | 1 GB*   |
|-----------------|-----------|-----------|---------|
| Model No.       | T10 256MB | T10 512MB | T10 1GB |

\* 1 MB = 1,000,000 Bytes / 1 GB = 1,000 MB = 1,000,000,000 Bytes  
Not all memory available for storage. Memory is not expandable.

| Category      | Item                          | Specifications  |                  |                  |
|---------------|-------------------------------|---|------------------|------------------|
| Audio         | Frequency range               | 20 Hz ~ 20 KHz  |                  |                  |
|               | Headphone Output              | (L)15 mW + (R)15 mW (16 Ohm) max. Volume  |                  |                  |
|               | S/N ratio                     | 90 dB(MP3)  |                  |                  |
| FM Tuner      | FM Frequency range            | 87.5 MHz ~ 108 MHz  |                  |                  |
|               | S/N ratio                     | 60 dB   |                  |                  |
|               | Antenna                       | Headphone/Earphone-Cord Antenna   |                  |                  |
| File Playback | File Type                     | MPEG 1/2/2.5 Layer 3, WMA, OGG, ASF   |                  |                  |
|               | Bit Rate                      | 8 Kbps ~ 320 Kbps   |                  |                  |
|               | Tag Info                      | ID3 V1, ID3 V2.2.0, ID3 V2.3.0, ID3 V2.4.0  |                  |                  |
|               | Max. Playtime                 | Approx. 53 hours (128 kbps, MP3, Vol 20, LCD off, EQ Normal, Alkaline "AA" 2400mAh) |                  |                  |
| Recording     | Max. Recording time (@32kbps) | 256 MB  | 512 MB           | 1 GB             |
|               |                               | Approx. 18 hours  | Approx. 36 hours | Approx. 72 hours |
| Display       | LCD                           | 65,000 color 1.01 inch CSTN   |                  |                  |
|               | Language                      | 40 languages  |                  |                  |
| General       | Dimension                     | 85.8 (W) x 40.8 (D) x 29.4 (H) mm   |                  |                  |
|               | Weight                        | 49 g (Battery included)   |                  |                  |
|               | Battery                       | AA Type Alkaline battery 1EA  |                  |                  |
|               | Operational Temperature       | -5 °C~ 40 °C  |                  |                  |



## Safety Information

### For Safety

- Avoid dropping or impacting the player.  
The player is designed to operate while walking or running, but dropping or excessively impacting the player may be cause damage.
- Avoid contacting the player with water.  
Damage to the internal parts of the player may occur if the player comes into contact with water. If your player gets wet, dry the outside with a soft cloth as soon as possible.
- Do not leave the player in a location near heat sources, or in a place subject to direct sunlight, excessive dust or sand, moisture, rain, mechanical shock, unlevelled surface, or in a car with its windows closed.
- Remove the battery if player is unused for long periods of time.  
Battery left in the player for a long time can corrode and damage the device.
- All data stored on this device may be erased by a excessive impact, a thunder or an electricity failure, etc. on the device.  
The manufacturer does not warrant and will not be held responsible in any way for damages or loss of data, including loss of data stored on this device, resulting from a excessive impact, a thunder or an electricity failure, You will be responsible for safe-guarding all data stored on this device.

### On headphones and earphones

- Road Safety  
Do not use headphones/earphones while driving, cycling, or operating any motorized vehicle. It may create a traffic hazard and is illegal in some areas. It can also be potentially dangerous to play your headset at high volume while walking, especially at pedestrian crossings. You should exercise extreme caution or discontinue use in potentially hazardous situations.
- Preventing hearing damage  
Avoid using headphones/earphones at high volume. Hearing experts advise against continuously loud and extended play. If you experience a ringing in your ears, reduce volume or discontinue use.
- Consideration for others  
Keep the volume at a moderate level. This will allow you to hear outside sound and to be considerate of the people around you.



**THIS DEVICE COMPLIES WITH PART 15 OF THE FCC RULES. OPERATION IS SUBJECT TO THE FOLLOWING TWO CONDITIONS:**

- (1) THIS DEVICE MAY NOT CAUSE HARMFUL INTERFERENCE, AND**
- (2) THIS DEVICE MUST ACCEPT ANY INTERFERENCE, RECEIVED, INCLUDING INTERFERENCE THAT MAY CAUSE UNDESIRED OPERATION.**

Note : This equipment has been tested and found to comply with the limits for a Class B digital device, pursuant to part 15 of the FCC Rules. These limits are designed to provide reasonable protection against harmful interference in a residential installation.

This equipment generates, uses and can radiate radio frequency energy and, if not installed and used in accordance with the instructions, may cause harmful interference to radio communications. However, there is no guarantee that interference will not occur in a particular installation. If this equipment does cause harmful interference to radio or television reception, which can be determined by turning the equipment off and on, the user is encouraged to try to correct the interference by one or more of the following measures :

- Reorient or relocate the receiving antenna.
- Increase the separation between the equipment and receiver.
- Connect the equipment into an outlet on a circuit different from that to which the receiver is connected.
- Consult the dealer or an experienced radio/TV technician for help.

**NOTE: THE MANUFACTURER IS NOT RESPONSIBLE FOR ANY RADIO OR TV INTERFERENCE CAUSED BY UNAUTHORIZED MODIFICATIONS TO THIS EQUIPMENT. SUCH MODIFICATIONS COULD VOID THE USER'S AUTHORITY TO OPERATE THE EQUIPMENT.**



---

Memo



---

Memo

