



SAMSUNG



SAMSUNG

Samsung Electronics America, Inc.
400 Valley Road, Suite 201 Mount Arlington, NJ 07856
1-800-SAMSUNG (1-800-726-7864)
www.samsung.com

AH68-01652Q(Rev 0.0)

YH-820



- Mass Storage Device Support
- MP3 & WMA Playback
- Image File Viewer
- Direct MP3 Recording
- USB 2.0 High Speed Data Transfer
- SRS WOW Surround Sound
- 1.5-inch 65,000 color LCD
- Upgradable
- Built-in Rechargeable Li-Ion Battery

YH-820

Preparations

Safety Instructions	4
Battery Charger Safety	6
Charging the battery	7
Features	8
Components	10
Display	10
Location of Controls	11

Connection to Computer

Connecting the player to your PC	12
Formatting in PC	16
Using Recovery Utilities	18
Downloading Recorded File	19
Using the Mass Storage Device	20
Installing Windows Media Player10	21
Using Windows Media Player10	23
Installing Multimedia Studio	28
Using Multimedia Studio	30
To View Help on Multimedia Studio	37

Using Your Player

Playing music	38
Hold Feature / Loop Repeating	39
Searching Within Music Files	40
Menu Mode	41

Using Your Player

Browsing Your Music	42
● Searching for and Selecting Music Files	42
● Play Options(Artist, Album, Tracks, Genres)	44
● Selecting a Playlist	45
● Play Options(Playlist)	45
● Searching for and Selecting Voice Files	46
● Play Options(Voice Recordings)	46
Recording Voice	47
Recording MP3s	48
Viewing Image Files	49
Viewing Slide Show	50










Additional Features

Shuffle and Repeat Playback	51
Equalizer Settings	52
SRS Settings	53
Recording Settings	54
Backlight Setting	54
Contrast Setting	55
Power Save Screen Setting	55
Fader Effect	56
Power Off Settings	57
Language Settings	57
Restoring Default Settings	58
Player Information	58
Copyright	59

Customer Support

Troubleshooting	60
Specifications	62

Please read and understand all the instructions to avoid injury to yourself and damage to the device

<p>Do not expose to extreme temperatures (above 95°F or below 23°F). Do not expose to moisture.</p> 	<p>Do not apply excessive pressure to the device. Do not drop the player.</p> 	<p>Do not let any foreign matter spill into the device.</p> 
<p>Do not expose to chemicals such as benzene and thinners.</p> 	<p>Do not use the unit near any appliance that generates a strong magnetic field.</p> 	<p>Do not expose to direct sunlight or heat sources.</p> 
<p>Do not try to disassemble and repair the device yourself.</p> 	<p>Do not store in dusty areas.</p> 	<p>Do not place heavy objects on top of the device.</p> 

* Please be aware that we disclaim all responsibility for damages from loss of saved or recorded data due to breakdown, repair or other causes.

Earphones

Follow Traffic Safety Instructions

- Do not use the earphones while driving an automobile or riding a bicycle. It's not only dangerous, but also against the law.
- To avoid an accident, do not turn up the volume of the earphones too high while walking.

Protect your ears

- Do not turn up the volume too high. Doctors warn against prolonged exposure to high volume.
- Stop using the device or turn the volume down if you have ringing in your ears.

Ambient operating conditions

- Ambient temperature : 5°C ~ 35°C (41°F ~ 95°F)
- Humidity : 10 ~ 75%

Environmental Information

- Follow local guidelines for waste disposal when discarding packages, batteries, and old electronic appliances.
- Your player is packaged with cardboard, polyethylene etc., and do not use any unnecessary materials.



CAUTION

RISK OF ELECTRIC SHOCK. DO NOT OPEN



The uninsulated parts inside the charger could cause electric shock.

For your safety, do not open the case of the charger.



Read this User Manual to prevent any problems that may occur while using the charger.

Warning

- Use the charger away from water sources to avoid fire or electric shock.

Caution

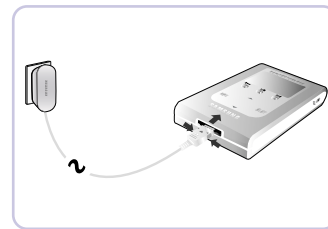
- To avoid electric shock, use the charger only with a 120V power outlet.
- Make sure that the charger's plug is inserted all the way into the outlet.

A charger is supplied with your player.

- * Please be sure to only use the provided charger.

Plug the charger into a wall outlet.

- * The indicator light on the USB cable turns green once charging is complete.
- * The first time the battery is charged, it will take approximately 3 hours.
Battery recharge time in normal operation is approximately 2.5 hours.



Caution

- To avoid the risk of fire, do not charge longer than 12 hours.
- Do not plug several devices into the same outlet.
- Do not use a rechargeable battery or charger that is defective.
- When using the rechargeable battery for the first time or after several months of non-use, fully charge it first.
- Overcharging will reduce the battery life.
- The rechargeable battery is a consumable item and its capacity will decrease gradually.
- To prolong the life of your battery, use the fully charged battery until it is completely discharged, and then fully charge it again before use. If you charge the battery that is not completely drained, the battery operating time will decrease. In this case, fully cycle (fully charge and then fully discharge) the battery several times.
- Do not let metallic objects, such as necklaces or coins, come into contact with the terminals (metallic parts) of the charger and the built-in rechargeable battery.
A fire or electric shock may result.
- Do not touch the charger with wet hands.

Mass Storage Device Support

- You can use the built-in 5GB hard drive to store your entire music library, plus use it as an external drive for your PC to store other data files.

MP3 & WMA Playback

- Your player supports playback of both MP3 and WMA.

Image File Viewer

- You can view JPEG images. Image files edited with Multimedia Studio can be viewed as slide shows.

Direct MP3 Recording

- You can convert music from CDs, cassettes, and radio into MP3 files without a PC.

USB 2.0 High Speed Data Transfer

- Maximum data speed transfer of 50 Mbps

SRS WOW Surround Sound

- The 3D surround(SRS) feature adds spaciousness to the sound.

1.5-inch 65,000 Color LCD

- The 1.5-inch 65,000 color LCD supports viewing of high quality image files.

Upgradable

- You can upgrade the built-in programs when available.
Please check the home page (www.samsung.com) for upgrades.

Built-in Rechargeable Li-ion Battery

- The built-in rechargeable lithium battery provides up to 8.5 hours of play time.
Time may vary depending on usage pattern.

Components

Player

Belt clip
AH61-01930A

Earphones
AH30-00070D

Line-In Cable
AH39-00488A

USB Cable
AH39-00724A

User Manual
AH68-001652Q

Charger
AH44-00061A

Installation CD
AH80-00093L

Model	YH-820 MB
Built-in memory	5GB

- The capacity of the useable built-in memory is less than indicated as the internal firmware uses a part of the memory as well.
- The appearance of the accessories shown is subject to change for product improvement without prior notice.
- The performance speed may slow if the internal memory does not have any free space.

Display

Mode indicator

Artist display

Track display

Elapsed track time

PLAY

Battery remaining indicator

Song number display

Album display

Singer

Soul Tree

Sing a Song

0:01.23

Location of Controls

LINE IN jack

Earphone jack

RESET Hole

Power On/Off Play/Pause button

Skip/Search button

VOLUME UP/ SCROLL UP button

MENU button

VOLUME DOWN/ SCROLL DOWN button

SELECT button

Display

RECORD button / Loop Repeating button

USB Cable Connection Port

MIC

HOLD switch

SAMSUNG

ENG

❑ System Requirements.

- Windows XP
- Windows Media Player 10.0
- Internet Explorer 6.0 or higher
- Pentium 200MHz or greater
- 50MB of available hard disk space
- CD-ROM drive (double speed or greater)
- USB port (2.0) supported
- DirectX 8.0 or above.

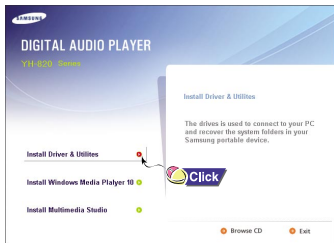
Note

- Log into your PC as an administrator (Main User) and install the supplied software (Multimedia Studio). Otherwise, installation will not be completed.

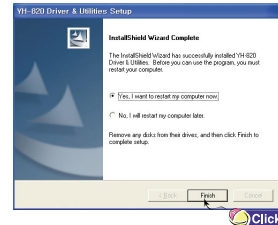
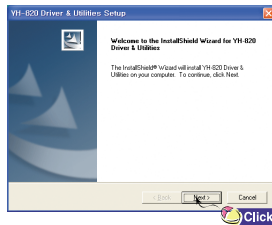
Before connecting the player to PC, make sure to install Driver&Utilities. If "Add New Hardware Wizard" appears, press the [Cancel] button and install Driver&Utilities.

Installing software

- 1 Insert the Installation CD into CD-ROM drive. The picture shown below appears. Select [Install Driver&Utilities].

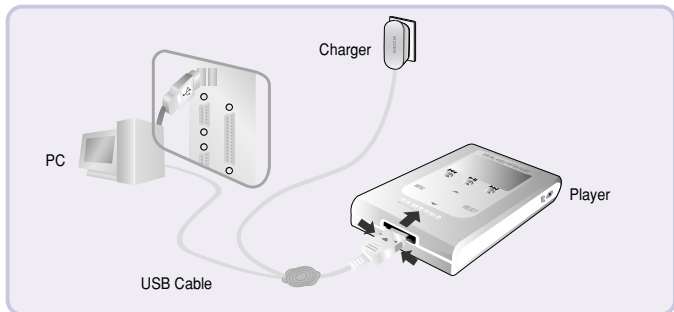


- 2 Follow the instructions in the window to complete the installation.



Connecting the player to your PC with a USB cable

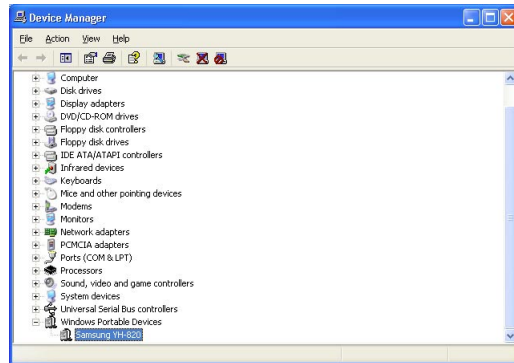
- 3 Connect the USB cable to the USB port your computer.
- 4 Connect the USB cable to the USB cable connection port on the player, and then plug the charger to the power outlet.
 - If you disconnect the USB cable from your PC while implementing a command or initializing during USB driver installation, your PC may not function correctly.
- 5 The USB driver is installed with a message saying that it is searching for a new device. You may not see the display screen during installation. Go to the device manager to check that installation has been successfully completed.
- 6 Upon installation of the USB driver "Samsung YH-820 USB Device" will appear in the [System Properties] → [Device Manager].



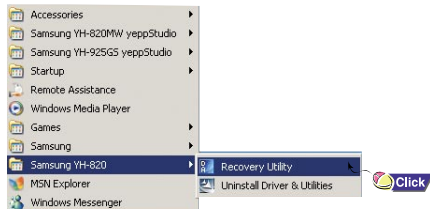
How to check if USB driver is properly installed

Windows XP:

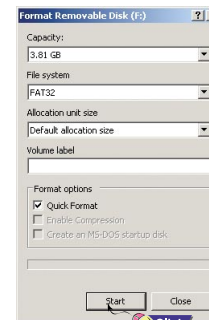
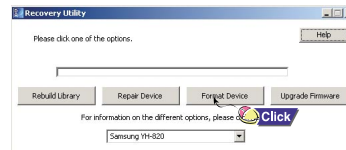
- 1) Start → Settings → Control Panel → System → Hardware → Device Manager
→ Windows Portable Devices → Samsung YH-820



- 1 Connect the USB cable to the USB port your computer.
- 2 Connect the other side of the USB cable to the player while pressing the **▶▶▶** button on the player.
- 3 Select [Start] → [Programs] → [Samsung YH-820] in the desktop, and then press [Recovery Utility].



- 4 Press the [Format Device] button. When the format screen appears, select the file system as FAT32 and then press the [Start] button.



Note

- By formatting, all previously preset menus will be reset, and any pre-existing song or data files will be erased.
- Care must be taken as formatted files can not be recovered.

The Recovery Utility can be used to recover your system in the event the following occurs:

- If one of the messages below appears:
 - Connect to PC and repair firmware with recovery utility.
 - Connect to PC and rebuild database with recovery utility.
- If the message "Loading" appears and the device does not operate when you turn on the power.
- If file search does not work properly in the Menu Library.

1 Connect the USB cable to the USB port on your computer.

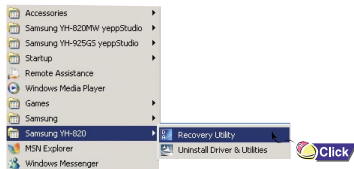
2 Connect the other side of the USB cable to the player while pressing the **▶▶▶** button on the player.

3 Select [Start] → [Programs] → [Samsung YH-820] in the desktop, and then press [Recovery Utility].

- For more details on recovery, press [Help] to view the help.

4 Select the recovery method you want.

- See help for details on each method.



You can upload the files recorded in the player to your PC.

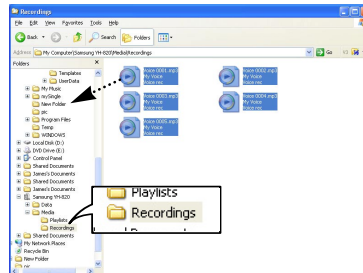
1 Connect the player to PC

2 Right click on the Start button, then choose Explore to Open Windows Explorer on PC.

3 Select [Samsung YH-820]- [Media]-[Recordings] from Windows Explorer.

- The recorded files are displayed.

4 Drag the recorded files to a desired folder of your PC. The selected file is transmitted to the specified folder of the PC.

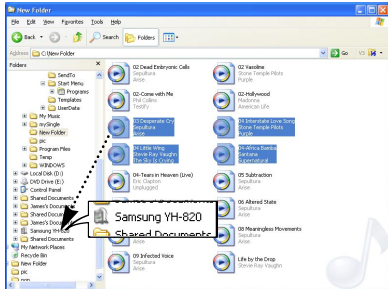


Using the Mass Storage Device

- The Removable Disk can be used as Mass Storage. Video, audio and image files can be downloaded but cannot be played back.

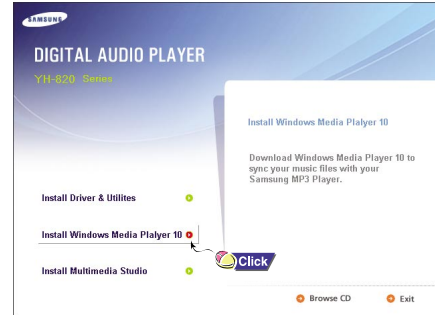
Downloading files

- 1 Connect the player to PC.
- 2 Right click on the Start button, then choose Explore to Open Windows Explorer on PC.
 - [Removable Disk] is displayed in Windows Explorer.
- 3 Select the file to save and drag-and-drop it into [Samsung YH-820].

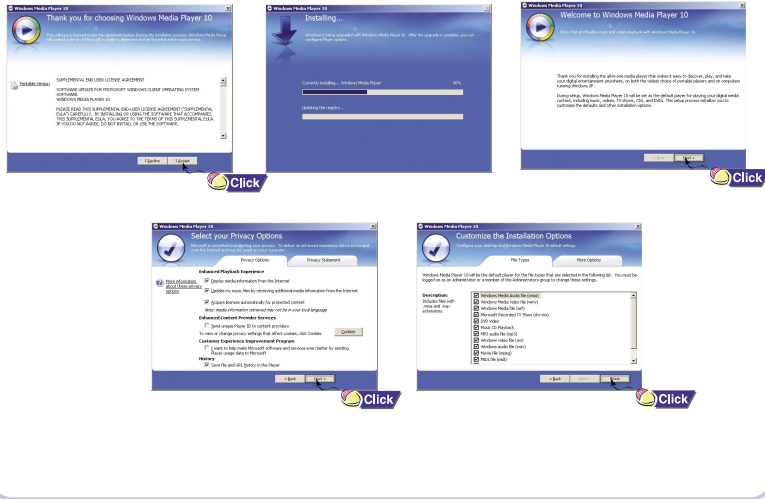


Installing Windows Media Player10

- 1 Insert the installation CD into the CD-ROM drive.
Select [Install Windows Media Player 10].



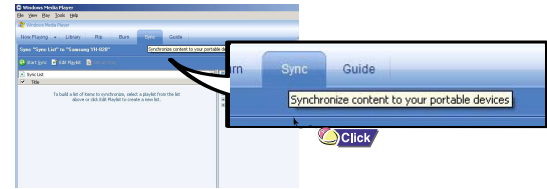
2 Follow the instructions in the window to complete the installation.



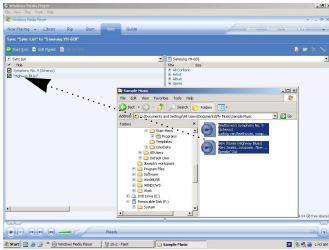
- You can download MP3 and WMA files using Windows Media Player 10.
- The file, downloaded from WMP10 to the player, will be automatically saved in Music folder.

Downloading Music Files

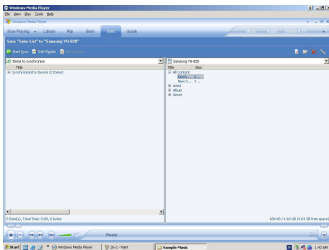
- 1 Connect the player to PC.
- 2 Run Windows Media Player10.
 - Select [Start] → [Programs] → [Windows Media Player] in the desktop.
- 3 Select [Sync] at the top of the screen.



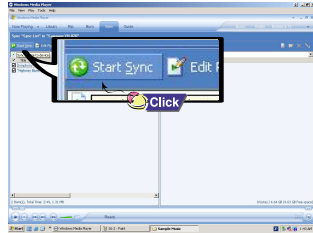
- 4 When the [Sync] window appears, select the file you want to transfer to the player, drag and drop it to the left [Sync List] window.



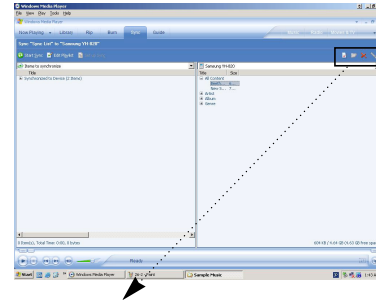
- 6 You can check the transferred file in the right window.



- 5 Make sure the music files you want to download are checked, and then press [Start Sync] at the top of the screen.
- [Synchronized to Device] message will appear on the left window.
The downloaded files will appear in the right window under Music folder



Using Other Functions



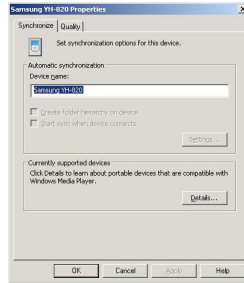
- ① [Display properties and settings] button
- ② [Create folder] button
- ③ [Delete from device] button
- ④ [Format storage media] button

* Format storage media button is not available.

Viewing Properties

Press the [Display Properties and Settings] button.

- You can check the properties of YH-820.

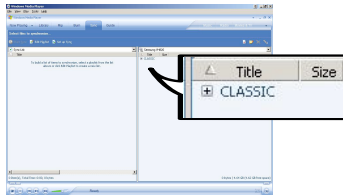
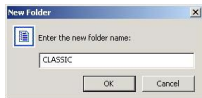


Creating Folder

1 Press the [Create Folder] button.

2 When the [New Folder] window appears, enter the folder name and then press the [OK] button.

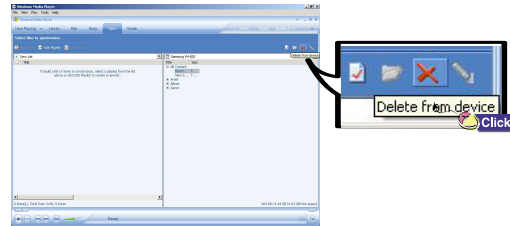
- A new folder is displayed in the right window of the main screen.



Deleting File and Folder

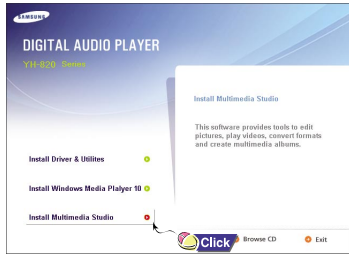
Select the file or folder to delete, and then press the [Delete from Device] button.

- Selected file or folder will be deleted.



- Multimedia Studio is a program that supports image editing, video playback and format conversion, and multimedia album creation.

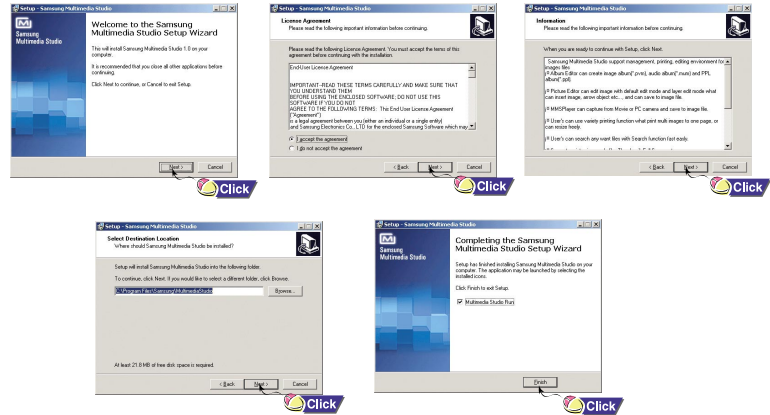
1 Insert the installation CD into the CD-ROM drive.
Select [Install Multimedia Studio].



2 Select language



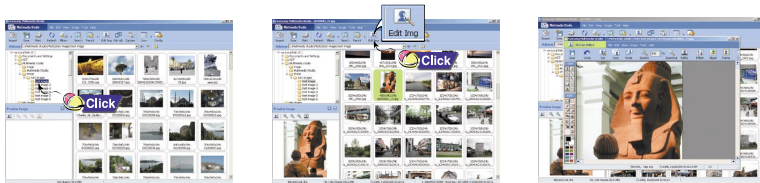
3 Follow the instructions in the window to complete the installation.



- Run Multimedia Studio in the Desktop.

Editing Images

- 1 Select the folder containing images to edit from the directory window at the upper left-hand section of Multimedia Studio.
 - The saved files will be displayed in the file list window on the right.
- 2 Select the image to edit.
 - The selected image will be displayed in the [Preview image] window.
- 3 Press the [Edit Img] button.
 - From the [Picture editor] window, you can perform functions like editing wallpaper images, editing layers, inserting clip arts, making frames and other various editing functions.



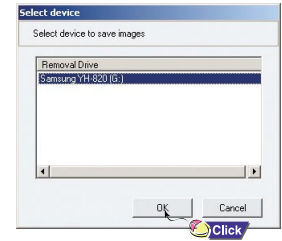
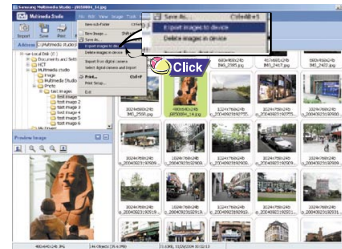
Note

- Refer to Help for more information.

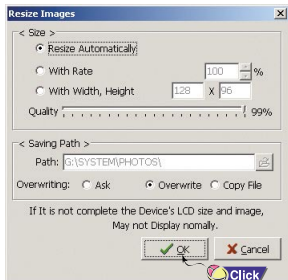
- Files downloaded without using Multimedia Studio cannot be viewed on the screen.

Sending images

- 1 Connect the player to PC.
- 2 Select the image(s) to send to the player.
- 3 Select [File] → [Export images to device] at the top of the Multimedia Studio menu.
- 4 Select the device connected to PC from the [Select device] screen, and then press the [OK] button.



- 5** Set the size and path of the image at the [Resize images] window and then click the [OK] button.
- The image will be sent to the selected device.
 - The sent image can be viewed from [Photo] → [Albums] on the menu.
 - The optimal image size for viewing on the unit is 128 x 96. Please adjust the image size if the image does not display correctly on the player.



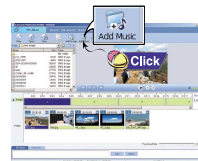
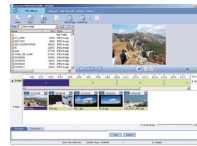
Note

- Image files saved in the player can be deleted by selecting [File] → [Delete images from device].
- Refer to Help for more information.

- Albums created from [Making Album for the use of PPL] can be viewed as slide shows on the player.

Making Albums for Slide Shows

- 1 Connect the player to PC.
- 2 Press the [Edit Alb] button at the top of Multimedia Studio.
 - The [Making New Album] window will be displayed.
- 3 Select [Making Album for the use of PPL] and then press the [OK] button.
 - The [PPL Album] window will be displayed.
- 4 Press the [Add Image] button at the top of the [PPL Album] window to select the image to edit.
 - If multiple images are selected, each image will be displayed for 5 seconds.



- 5 Press the [Add Music] button to add background music.
 - Add BG Music: Images change every 5 seconds while the selected music is played.

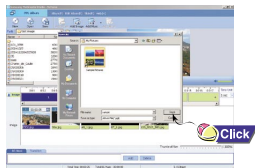
Note

- To add a copyright protected audio file, which can be played on the player, select [Add Music] → [Add BG Music] → [Add from Device] and select the desired file on the connected player.
- Copyright protected audio files added from the player are marked DEVICE, and cannot be played in the [PPL Album] window.

6 Press the [Save] button at the top of the [PPL Album] window when album editing is complete.

7 Select the directory to save to in the save window and press the [Save] button.

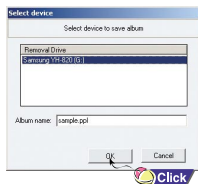
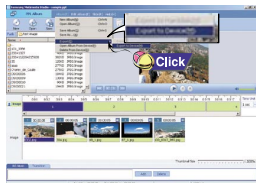
- The edited album will be saved in the selected directory.



8 Select [Album] → [Export] → [Export to Device] at the top of the [PPL Album] window to send the saved ppl file to the device.

9 Enter the album name at the [Select device] screen and then press the [OK] button.

- The ppl file will be sent to the selected device.
- The sent ppl file can be viewed from [Album] → [Slide Show].



Note

- Select [Delete Album From Device] to delete ppl file saved in the player.
- Refer to [Help] for more detailed information

- This function allows you to capture a still frame from a video file and save it as a picture, then transfer it to your YH820.

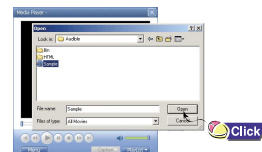
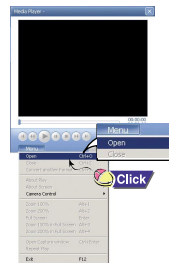
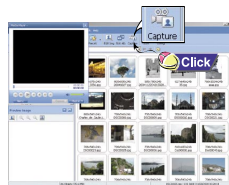
Capturing Video

1 Press the [Capture] button at the top of the Multimedia Studio menu.

- The Media Player screen will be displayed.

2 Click [Menu] → [Open] on your PC and select the video to play.

- The selected video will be played.



3 Press the ① [Capture] button and then press the ② [Capture] button when the image you want to capture appears.

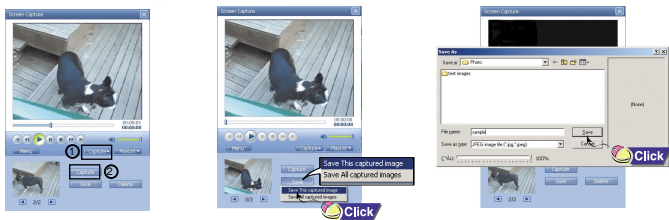
- The selected image will be captured.

4 Press the [Save] button.

- Save This captured image: saves the currently selected image.
- Save All captured images: saves all captured images.

5 Select the directory to save to from the [Save As] window and press the [Save] button.

- The selected image will be saved.

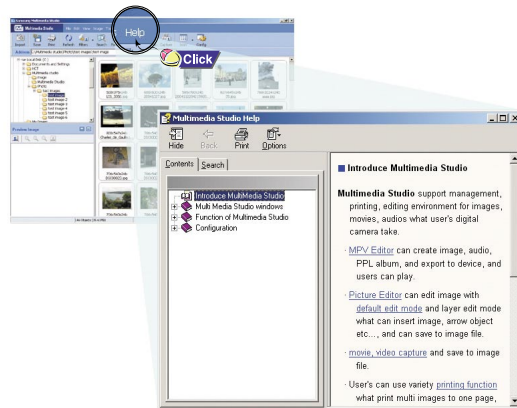


Note

- The player will only play back still images. It will not play back video.
- Video playback and conversion codecs are not provided. It is recommended that you use codecs of latest versions.
- Refer to [Help] for more detailed information

Run Multimedia Studio and press the Help button at the top of the screen.

- Help will be displayed.



Make sure the player is fully charged and the earphones are connected.

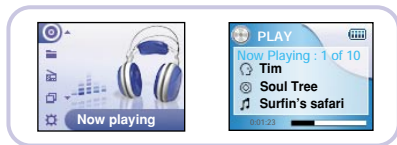
Turning Power On and Off

- Power On: Press and hold the ►|| button to turn on the power.
- Power Off: Press and hold the ►|| button to turn off the power.

Playing Music

Select Now Playing in the menu.

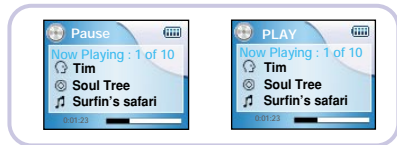
- Playback starts automatically.



Pausing Music

Press the ►|| button to pause playback.

- While in Pause mode, briefly press ►|| again to resume playback.

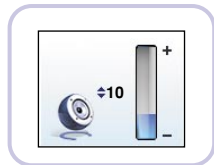


Note

- Press and hold the SELECT key in Now Playing during file playback to display the current Playlist.
- In the Playlist, use the SCROLL UP/SCROLL DOWN buttons to move to a track, and press the ►|| button to play the selected track.


Adjusting the Volume

Press the VOLUME UP or DOWN button to adjust the volume from 0 to 40.



Use the Hold feature to lock and disable all buttons. The Hold feature is useful to prevent your Samsung player from being accidentally turned off or on when jogging, or to ensure uninterrupted playback.

Activate  on the main unit.

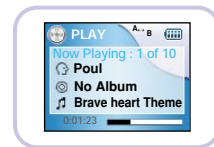
- When you activate the HOLD switch, a "  " appears on the display.

Loop Repeating

Starting Point

While playing a music file, press the A↔B button at the beginning of the loop you want to set.

- A ↔ appears in the display.



Ending Point

Press the A↔B button again to set the end of the loop.

- A ↔ B appears in the display.
The loop is played repeatedly.

Note

- Press the A ↔ B button to cancel the loop.

Searching for Specific Parts in PLAY Mode

- During playback, press and hold the **⏮**, **⏭** buttons to forward or reverse search the currently playing file.

Searching for Music Files in PLAY Mode.

- During playback, briefly press the **⏭** button to play the next track in the playlist.
- Press the **⏮** button within 5 seconds after playback starts to move to and play the previous track. Press the **⏮** button after 5 seconds to play the current track from the beginning.

Searching for Music Files in PAUSE Mode.

- While in pause mode, press the **⏮**, **⏭** buttons to move to the previous or next track in the playlist and play it automatically.



Note

- VBR (Variable Bit Rate) File: An MP3 file that has varying compression ratios.
- When playing a VBR file, even if you press the **⏮** button within 5 seconds after the start of playback, the previous song may not be played.
- The actual play time and the time displayed on the main unit may differ for VBR files.

Press the MENU button to switch to Menu mode.

- Use the SCROLL UP/SCROLL DOWN buttons to select the menu item you want, and then briefly press the SELECT button.



- Now Playing: Display the song currently playing.
- Library: Search and select music to play.
- Photo: View saved image files or slide shows
- Settings: Change the settings.



Note

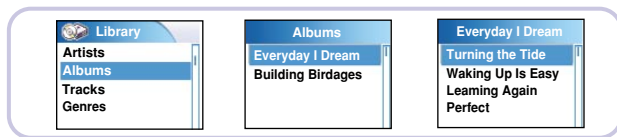
- In Menu mode, press the Menu button to exit from the submenu you are in.

In the Menu, use the SCROLL UP/SCROLL DOWN buttons to select the Library, and press the SELECT button.

Searching for and Selecting Music Files



- Artists: Shows the artist name from the ID3 tag information stored in the music file.
- Press the ►|| button on the desired artist name. All song titles corresponding to the artist name will be played.
- If you select an artist's name, song titles that correspond to the name will be displayed. You can use the SCROLL UP/DOWN buttons to move, and then press the SELECT button to play the selected song.



- Albums: Shows the album title from the ID3 tag information stored in the music file.
- Press the ►|| button on the desired album name. All song titles corresponding to the album name will be played.
- If you select an album name, song titles corresponding to that album will be displayed. You can use the SCROLL UP/DOWN buttons to choose a song, and then press the SELECT button to play the selected song.



- Tracks: Shows the song title from the ID3 tag information stored in the music file.
- You can use the SCROLL UP/DOWN buttons to move, and then press the SELECT button to play the selected song.



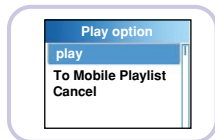
- Genres: Shows the song genre from the ID3 tag information stored in the music file.
- Press the ►|| button on the desired genre name. All song titles corresponding to the genre name will be played.
- If you select an genre name, song titles corresponding to that genre will be displayed. You can use the SCROLL UP/DOWN buttons to choose a song, and then press the SELECT button to play the selected song.

Note

- What is an ID3 Tag ? This is what is attached to an MP3 to carry information relevant to the file, such as the title, artist, album, year, genre and a comment field.

I Play Options (Artist, Album, Tracks, Genres)

- 1 Select Artist, Album, Track, Genre, and press and hold the SELECT button.
 - Move to Play Options screen.
- 2 In the Play Options, use the SCROLL UP/SCROLL DOWN buttons to select the desired play option, and press the SELECT button.



- Play: The selected title will be played.
If you select [Play] in Artist, Album and Genre, all titles corresponding to Artist, Album and Genre will be played.
- To Mobile Playlist: The selected title will be added to Mobile Playlist.
If you select Add To Mobile Playlist in Artist, Album and Genre all titles corresponding to each Artist, Album and Genre will be added to Mobile Playlist.
- Cancel: Go back to the previous screen.

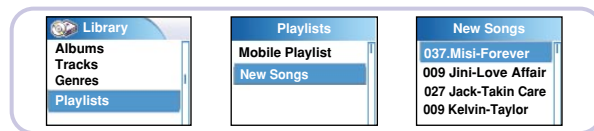


Note

- Mobile Playlist is a play list always present in the unit. Songs stored in the unit can be easily added to or deleted from Mobile Playlist.

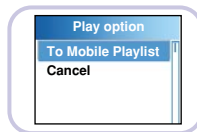
I Selecting a Playlist

- 1 In the Library, use the SCROLL UP/SCROLL DOWN buttons to select Playlists and then press the SELECT button.
- 2 Select the playlist that you want to play, and then press the SELECT button.
 - Saved files will appear in the selected playlist.
- 3 Press the SELECT button on the desired file.
 - The selected file will be played.



I Play Options (Playlists)

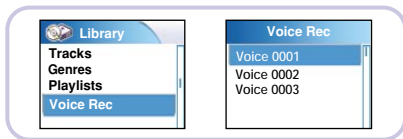
- 1 Select a title in the Playlists, and press and hold the SELECT button.
 - Move to Play Options screen.
- 2 In the Play Options, use the SCROLL UP/SCROLL DOWN buttons to select the desired play option, and press the SELECT button.



- To Mobile Playlist:
The selected title will be moved to Mobile Playlist.
- Cancel: Go back to the previous screen.

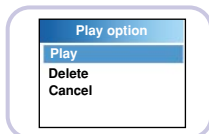
Searching for and Selecting Voice Files

- 1 In the Library, use the SCROLL UP/SCROLL DOWN buttons to select Voice Recordings, and then press the SELECT button.
 - Recorded voice file will appear.
- 2 Press the ►|| button or SELECT button on the desired file.
 - The selected file will be played.



Play Options (Voice Recordings)

- 1 Select a Voice file in the Voice Recordings, and press and hold the SELECT button.
 - Move to Play Options screen.
- 2 In the Play Options, use the SCROLL UP/SCROLL DOWN buttons to select the desired play option, and press the SELECT button.

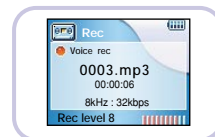


- Play : The selected title will be played.
- Delete : The selected title will be deleted.
- Cancel : Go back to the previous screen.

- 1 Press and hold the REC button to start voice recording.

- 2 Press the REC button.

- Recording stops and the file is created.
- Files are recorded and renamed Voice0001.mp3, Voice0002.mp3, and so on.
- MP3 files are automatically added to your Library.

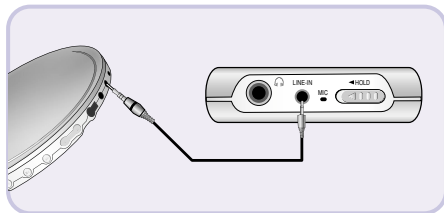


Note

- Even if you set the sampling and bit rates higher, voice recording will default to 8kHz 32 kbps
- Each voice recording file can be as long as 180 minutes.

Your player can be used to record directly from any external audio source such as a CD player, cassette player, home stereo or radio.

- 1 While in Music mode, use the Line-In cable to connect the main unit's line in jack and the line out jack of your external audio device.



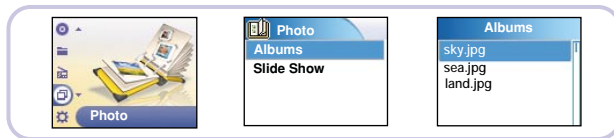
- 2 Press and hold the REC button.
 - The music currently played on the external device will be saved as an MP3 file.
- 3 Press the REC button.
 - Recording stops and the file is created.
 - Files are recorded and renamed Line-in0001.mp3, Line-in0002.mp3, and so on.
 - MP3 files are automatically added to your Library.



Note

- If the battery is not sufficiently charged, the player will not completely encode the file.
- Adjust the volume of the external audio source to a suitable level and encode it. If the volume level is too high, the sound quality may be poor.

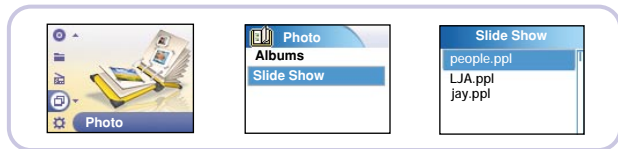
- 1 Press the MENU button.
In the Menu, select Photo and press the SELECT button.
- 2 Use the SCROLL UP/SCROLL DOWN buttons to select Albums.
- 3 Use the SCROLL UP/SCROLL DOWN buttons to move to the desired image file and press the SELECT button.
 - The selected image file will be displayed.
 - While viewing the image file, press the MENU button to move to an upper menu.
 - Press the ◀◀ button to view the previous image.
 - Press the ▶▶ button to view the next image.



Note

- Please refer to "Sending Images" under "Using Multimedia Studio" to send images to the player.

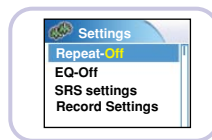
- 1 Press the MENU button.
Select Photo from the menu screen and press the SELECT button.
- 2 Use the SCROLL UP/SCROLL DOWN buttons to select Slide Show.
- 3 Use the SCROLL UP/SCROLL DOWN buttons to move to the desired file and then press the SELECT button.
 - The selected slide show will be displayed.
 - While viewing the slide show, press the SCROLL UP/SCROLL DOWN buttons to adjust the background music volume.
 - While viewing the slide show, press the MENU button to move to the previous screen.



Note

- Slide show files can be created or edited in Multimedia Studio. Please refer to "Making Albums for Slide Shows" under "Using Multimedia Studio" for more information.
- Music is played only if music was attached at the time of album editing.
- Slide show viewing may be slow if too many files are selected or the image files are too large.

- 1 In the Menu, use the SCROLL UP/SCROLL DOWN buttons to select Settings, and then press the SELECT button.
- 2 Use the SCROLL UP/SCROLL DOWN buttons to select Repeat.
- 3 Press the SELECT button to choose Repeat Off, One, All or Shuffle.
 - Select the desired mode, and then press the MENU button to go to the main menu.



- Off: Select this to listen to songs in the current playlist one at a time in the given order.
- One (↵): Select this to repeatedly play just one track.
- All (🔄): Select this to repeatedly play all tracks in the current playlist.
- Shuffle (X): Select this to play all stored tracks in random order.

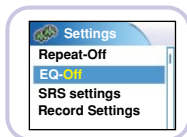
1 In the Menu, use the SCROLL UP/SCROLL DOWN buttons to select Settings, and then press the SELECT button.

2 Use the SCROLL UP/SCROLL DOWN buttons to select EQ.

3 Press the SELECT button until the desired mode appears.

- Select the desired mode, and then press the MENU button to go to the main menu.

Off → Jazz → Classical → Pop → Rock → Bass boost → WOW → SRS → TruBass



- WOW: This feature allows you to enjoy the SRS and Trubass features simultaneously.
- SRS: You will hear 3D Stereo sound.
- TruBass: This is a bass boost feature that adds fullness to the sound.



Note

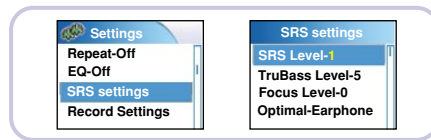
- **SRS** is a trademark of SRS Labs, Inc. WOW technology is incorporated under license from SRS labs, Inc..
- Please adjust the volume to a suitable level, as the volume may increase in the SRS setting.
- This unit supports sampling frequencies of 32KHz, 44.1KHz or 48KHz.

1 In the Menu, use the SCROLL UP/SCROLL DOWN buttons to select Settings, and then press the SELECT button.

2 Use the SCROLL UP/SCROLL DOWN buttons to select SRS settings, and then press the SELECT button.

3 Use the SCROLL UP/SCROLL DOWN buttons to select SRS Level, TruBass Level, Focus Level and Optimal, and then press the SELECT button to make the desired SRS Settings.

- Complete the desired setting, and then press the MENU button to go to the main menu.
- SRS, TruBass, Focus Level: The level for SRS, TruBass and Focus can each be set within the range of 0 to 10.
 - Focus : You can enjoy clearer tone during playback.
- Optimal: It optimizes the SRS function according to the device connected. Earphone → Speaker → Headphone → Carpack

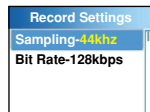
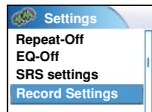


Note

- SRS settings are available only if WOW, SRS, or TruBass are selected in the EQ menu.

Recording Settings

- 1 In the Menu, use the SCROLL UP/SCROLL DOWN buttons to select Settings, and then press the SELECT button.
- 2 Use the SCROLL UP/SCROLL DOWN buttons to select Record Settings, and then press the SELECT button.
- 3 Use the SCROLL UP/SCROLL DOWN buttons to select Sampling and Bit Rate, and then briefly press the SELECT button to make the desired recording setting.
 - Complete the desired setting, and then press the MENU button to go to the main menu.
 - Sampling: Each time the Select button is pressed, the selection toggles between 32KHz and 44KHz.
 - Bit Rate: Each time the Select button is pressed, the selection changes as follows: 96 → 128 → 160Kbps.
 - Selecting a higher bit rate results in better quality sound, but uses more memory space.

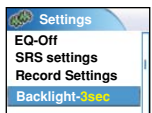


Note

- Voice can be recorded only at 8KHz 32kbps.

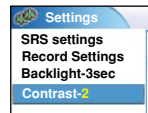
Backlight Settings

- 1 In the Menu, use the SCROLL UP/SCROLL DOWN buttons to select Settings, and then press the SELECT button.
- 2 Use the SCROLL UP/SCROLL DOWN buttons to select Backlight.
- 3 Press the SELECT button until the desired Backlight On-Time appears.
 - Off, 3, 5, 10, 15, 30seconds and Always are available for Backlight-On Time.



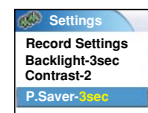
Contrast Settings

- 1 In the Menu, use the SCROLL UP/SCROLL DOWN buttons to select Settings, and then press the SELECT button.
- 2 Use the SCROLL UP/SCROLL DOWN buttons to select Contrast.
- 3 Press the SELECT button until the desired screen contrast appears.
 - The setting range of the contrast, which adjusts the contrast of the screen, is 0 to 4.

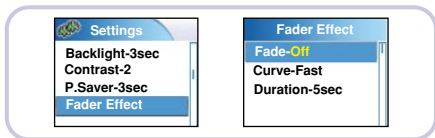


Power Save Screen Settings

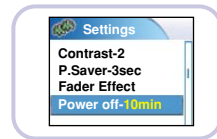
- 1 In the Menu, use the SCROLL UP/SCROLL DOWN buttons to select Settings, and then press the SELECT button.
- 2 Use the SCROLL UP/SCROLL DOWN buttons to select P.saver screen.
- 3 Press the SELECT button until the desired screen power save time appears.
 - Off → 15 sec → 30 sec → 45 sec → 1 min
 - If the selected time elapses while playing music, the screen switches to power save mode. In power save mode, the music continues to play but the music information is not displayed on the screen.
 - Press the ►|| button in power save mode to return to the normal playback screen.



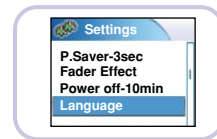
- 1 In the Menu, use the SCROLL UP/SCROLL DOWN buttons to select Settings, and then press the SELECT button.
- 2 Use the SCROLL UP/SCROLL DOWN buttons to select Fader Effect, and then press the SELECT button.
- 3 Use the SCROLL UP/SCROLL DOWN buttons to select Fade, Curve, and Duration, and then briefly press the SELECT button.
 - Complete the desired setting, and then press the MENU button to go to the main menu.
 - Fade: Each time the SELECT button is pressed, the selection changes as follows :
 - Fade Off: Music is played back at the volume level you set.
 - Fade In: Volume gradually increases only when playback starts.
 - Fade Out: Volume gradually decreases at the end only.
 - Fade In/Out: Volume gradually increases when playback starts and gradually decreases at the end.
 - Curve : Each time the SELECT button is pressed, the selection changes as follows :
 - Linear: The speed at which the volume of music increases or decreases is fixed.
 - Express slow: The speed at which the volume of music increases or decreases is slow.
 - Express fast: The speed at which the volume of music increases or decreases is fast.
 - Duration : Each time the SELECT button is pressed, the selection changes as follows :
3 → 5 → 10 → 15sec



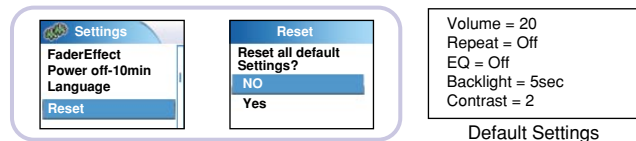
- 1 In the Menu, use the SCROLL UP/SCROLL DOWN buttons to select Settings, and then press the SELECT button.
- 2 Use the SCROLL UP/SCROLL DOWN buttons to select Power off.
- 3 Press the SELECT button until the desired power-off time appears.
 - Select the desired power-off time, and then press the MENU button to go to the main menu.
OFF → 30sec → 1min → 5min → 10min → 15min.



- 1 In the Menu, use the SCROLL UP/SCROLL DOWN buttons to select Settings, and then press the SELECT button.
- 2 Use the SCROLL UP/SCROLL DOWN buttons to select Language.
- 3 Use the SCROLL UP/SCROLL DOWN buttons to select the desired Language, and then press the SELECT button.
 - English → Korean → Japanese → S.Chinese → T.Chinese → French → German → Italian → Spanish → Russian
 - The Menu Screen will appear in the language you set.



- 1 In the Menu, use the SCROLL UP/SCROLL DOWN buttons to select Settings, and then press the SELECT button.
- 2 Use the SCROLL UP/SCROLL DOWN buttons to select Reset, and then press the SELECT button.
 - If you select Reset, all selected settings will be restored to the default setting.

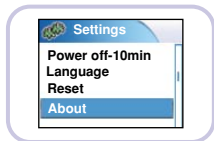


- 1 In the Menu, use the SCROLL UP/SCROLL DOWN buttons to select Settings, and then press the SELECT button.
- 2 Use the SCROLL UP/SCROLL DOWN buttons to select Copyright, and then press the SELECT button.



Player Information

- 1 In the Menu, use the SCROLL UP/SCROLL DOWN buttons to select Settings, and then press the SELECT button.
- 2 Use the SCROLL UP/SCROLL DOWN buttons to select About, and then press the SELECT button.
 - If you select About, you can check the total number of tracks, total capacity, available capacity and software version information.



One of the messages below appears:

- Connect to PC and repair firmware with recovery utility.
- Connect to PC and rebuild database with recovery utility.

The message "Loading" appears and the device does not operate when you turn on the power.

File search does not work properly in the Menu Library.

The player doesn't work. There is nothing showing on the display panel.

- Reset the Player
- Connect the charger.
- Make sure the Hold switch is in the off position.

There is no sound even if I press the Play button in Music mode.

- Check if there are MP3 or WMA files on the player.
- Non-playable file formats (e.g. MPEG1 LAYER 1 file) cannot be played.
- Files that have been downloaded without using the WMP10 cannot be played.

I cannot download files.

- Check the battery's power level.
- Check if the driver is installed correctly on your PC.
Reinstall the software from the installation CD.
- Check the USB connection between the player and your PC.
- Check if there is the "unplug/eject" or "Safely Remove Hardware" icon located in your icon tray at the bottom of your screen.

Cannot view image files.

- Files downloaded without using Multimedia Studio cannot be viewed on the screen.

The Backlight is off.

- Please check the Backlight settings.
- Backlight is automatically disabled for longer playback in case of low battery power.

The playback time display during playback does not seem right.

- Check if you are not playing a VBR (Variable Bit Rate) file. VBR files are only partially supported.

The LCD window is too dark.

- Check the contrast in the Menu.
- Please check if the player is in power save mode.

During playback, some unknown characters are displayed on the display panel.

- Unsupported languages will be indicated by an asterisk (*).

A "/Noartist/Noalbum" file path appears on the playback screen in place of the selected music file's song title.

- There is no ID3 tag information for the music file. Edit the song title, artist, and album information of the song.

It takes a long time when I search songs by Song Title, Artist, or Album.

- If there are many music files on your player, it may take longer to read them.

Model	YH-820
Internal Memory Capacity	5GB
Built-in Rechargeable Battery Capacity	650mAh
Voltage	3.7V (Li-ion Rechargeable Battery)
Dimensions/Weight	1.96"X 0.54" X 3.47"/2.98oz
Case	Aluminum/Plastic
File Transfer Speed	Max. 50Mbps
Signal to Noise Ratio	90dB with 20KHz LPF(based on 1KHz OdB)
Earphone Jack Output Power	12mW(16Ω)
Output Frequency Range	22Hz~20KHz
Temperature Range	-5~ +35°C(23~95F)
File Support	MPEG1/2/2.5 Layer3(8Kbps ~ 320Kbps, 8KHz ~ 48KHz) WMA (48Kbps ~ 192Kbps, 8KHz ~ 48KHz)

The product unit accompanying this user manual is licensed under certain intellectual property rights of certain third parties. In particular, this product is licensed under the following US patents: 5,991,715, 5,740,317, 4,972,484, 5,214,678, 5,323,396, 5,539,829, 5,606,618, 5,530,655, 5,777,992, 6,289,308, 5,610,985, 5,481,643, 5,544,247, 5,960,037, 6,023,490, 5,878,080, and under US Published Patent Application No. 2001-44713-A1.

This license is limited to private non-commercial use by end-user consumers for licensed contents. No rights are granted for commercial use. The license does not cover any product unit other than this product unit and the license does not extend to any unlicensed product unit or process conforming to ISO/IEC 11172-3 or ISO/IEC 13818-3 used or sold in combination with this product unit. The license only covers the use of this product unit to encode and/or decode audio files conforming to the ISO/IEC 11172-3 or ISO/IEC 13818-3. No rights are granted under this license for product features or functions that do not conform to the ISO/IEC 11172-3 or ISO/IEC 13818-3.

FCC

This device complies with part 15 of the FCC Rules. Operation is subject to the following two conditions:

(1) This device may not cause harmful interference, and (2) this device must accept any interference received, including interference that may cause undesired operation.

Caution: Any changes or modifications in construction of this device which are not expressly approved by the party responsible for compliance could void the user's authority to operate the equipment

Note: This equipment has been tested and found to comply with the limits for a Class B digital device, pursuant to part 15 of the FCC Rules. These limits are designed to provide reasonable protection against harmful interference in a residential installation. This equipment generates, uses and can radiate radio frequency energy and, if not installed and used in accordance with the instructions, may cause harmful interference to radio communications. However, there is no guarantee that interference will not occur in a particular installation.

If this equipment does cause harmful interference to radio or television reception, which can be determined by turning the equipment off and on, the user is encouraged to try to correct the interference by one or more of the following measures:

- ◆ Reorient or relocate the receiving antenna.
- ◆ Increase the separation between the equipment and receiver.
- ◆ Connect the equipment to an outlet on a circuit different from that to which the receiver is connected.
- ◆ Consult the dealer or an experienced radio/TV technician for help.

FCC

Any changes or modifications not expressly approved by the grantee of this device could void the user's authority to operate the device.

Compliance

This product conforms to the following Council Directive:

- ◆ Directive 89/336/EEC, 92/31/EEC(EMC)

Declaration of Conformity

Name: Samsung Electronics Co., Ltd
 Address: 416, Maetan-3Dong, Paldal-Gu, Suwon City, Kyungki-Do, Korea 442-742
 declares under its sole responsibility that the product
 Trade Name: Samsung Electronics Co., Ltd
 Model Number: YH-820
 has been tested according to the FCC/CISPR22/95 requirements for Class B devices and found compliant with the following standards

EMI/EMC: AnSI C63.4 1992, FCC Part 15 Subpart B

This device complies with part 15 of the FCC Rules.

Operation is subject to the following two conditions:

1. This device may not cause harmful interference, and
2. This device must accept any interference received, including interference that may cause undesirable operation.

Party Responsible for Product Compliance

Samsung Electronics America
 QA Lab.
 3351 Michelson Dr. Suite #290
 Irvine, CA92612

Samsung warrants this product as free of defects in material, design and workmanship for a period of twelve(12) months from the original date of purchase.

If during the period of warranty this product proves defective under normal use and service, you should return the product to the retailer from whom it was originally purchased. The liability of Samsung and its appointed maintenance company is limited to the cost of repair and/or replacement of the unit under warranty. Return of the product for defective reasons should be to the original purchaser; however, Samsung Authorized Dealers and Authorized Service Centers will comply with the warranty on the terms issued to purchasers in the country concerned. For further information relating to the Authorized Service Centers contact; 1-800-SAMSUNG (1-800-726-7864) www.samsung.com

WARRANTY CONDITIONS:

1. The warranty is only valid when the warranty card is properly completed, and upon presentation of the proof of purchase consisting of original invoice or sales slip confirmation, indicating the date of purchase, dealer's name, model, serial No. and product number. Samsung reserves the right to refuse warranty service if this information has been removed or changed after the original purchase of the product from the dealer.
2. Samsung's obligations are to the repair of the defective part, and at its discretion, replacement of the product (service exchange unit).
3. Warranty repairs must be carried out by an Authorized Samsung Dealer/Service Center. No reimbursement will be made for repairs carried out by non Samsung Centers, and warranty coverage will not be valid for any repairs or damage caused by such repairs.
4. Repair or replacement under the terms of this warranty does not give right to extension to or a new starting of the period of warranty. Repair or direct replacement under the terms of this warranty may be fulfilled with functionally equivalent service exchange units.

5. The warranty is not applicable in cases other than defects in material, design and workmanship. The warranty does not cover the following:

- ◆ Periodic checks, maintenance, repair and replacement of parts due to normal wear and tear.
- ◆ Abuse or misuse, including but not solely limited to the failure to use this product for its normal purposes or in accordance with Samsung's instructions usage and maintenance.
- ◆ Use of the product in conjunction with accessories not approved by Samsung for use with this product.
- ◆ Failure of the product arising from incorrect installation or use not consistent with technical or safety standards in current force, or failure to comply with product manual instructions.
- ◆ Accidents, Acts of God or any cause beyond the control of Samsung caused by lightning, water, fire, public disturbances and improper ventilation.

- ◆ Unauthorized modifications carried out for the product to comply with local or national technical standards in countries for which the Samsung product was not originally designed.
 - ◆ Repairs performed by non-authorized service centers such as opening of the product by a non-authorized person.
 - ◆ The model, serial No. and product number on the product has been altered, deleted, removed or made illegible.
6. This warranty does not affect the consumer's statutory rights nor the consumers rights against the dealer from their purchase/sales agreement.

THERE ARE NO EXPRESS WARRANTIES OTHER THAN THOSE LISTED AND DESCRIBED ABOVE, AND NO WARRANTIES WHETHER EXPRESS OR IMPLIED, INCLUDING, BUT NOT LIMITED TO, ANY IMPLIED WARRANTIES OF MERCHANTABILITY OR FITNESS FOR A PARTICULAR PURPOSE, SHALL APPLY AFTER THE EXPRESS WARRANTY PERIODS STATED ABOVE, AND NO OTHER EXPRESS WARRANTY OR GUARANTY GIVEN BY ANY PERSON, FIRM OR CORPORATION WITH RESPECT TO THIS PRODUCT SHALL BE BINDING ON SAMSUNG, SAMSUNG SHALL NOT BE LIABLE FOR LOSS OF REVENUE OR PROFITS, FAILURE TO REALIZE SAVINGS OR OTHER BENEFITS, OR ANY OTHER SPECIAL, INCIDENTAL OR CONSEQUENTIAL DAMAGES CAUSED BY THE USE, MISUSE OR INABILITY TO USE THIS PRODUCT, REGARDLESS OF THE LEGAL THEORY ON WHICH THE CLAIM IS BASED, AND EVEN IF SAMSUNG HAS BEEN ADVISED OF THE POSSIBILITY OF SUCH DAMAGES. NOR SHALL RECOVERY OF ANY KIND AGAINST SAMSUNG BE GREATER IN AMOUNT THAN THE PURCHASE PRICE OF THE PRODUCT SOLD BY SAMSUNG AND CAUSING THE ALLEGED DAMAGE. WITHOUT LIMITING THE FOREGOING, PURCHASER

ASSUMES ALL RISK AND LIABILITY FOR LOSS, DAMAGE OR INJURY TO PURCHASER AND PURCHASER'S PROPERTY AND TO OTHERS AND THEIR PROPERTY ARISING OUT OF THE USE, MISUSE OR INABILITY TO USE THIS PRODUCT SOLD BY SAMSUNG NOT CAUSED DIRECTLY BY THE NEGLIGENCE OF SAMSUNG. THIS LIMITED WARRANTY SHALL NOT EXTEND TO ANYONE OTHER THAN THE ORIGINAL PURCHASER OF THIS PRODUCT, IS NONTRANSFERABLE AND STATES YOUR EXCLUSIVE REMEDY.

Some states do not allow limitations on how long an implied warranty lasts, or the exclusion or limitation of incidental or consequential damages, so the above limitations or exclusions may not apply to you. This warranty gives you specific legal rights, and you may also have other rights which vary from state to state. This product is for personal use only, and is only for use in compliance with the limitations of copyright and other laws.

To obtain warranty service, please contact SAMSUNG at:
Samsung Electronics America, Inc.
400 Valley Road, Suite 201 Mount Arlington,
NJ 07856
1-800-SAMSUNG (1-800-726-7864)
www.samsung.com
081299