



SM-Z130H/DS

User Manual

Table of Contents

Read me first

Getting started

- 6 Package contents
- 7 Device layout
- 9 Using the SIM or USIM card and battery
- 14 Using a memory card
- 16 Turning the device on and off
- 17 Locking and unlocking the screen

Basics

- 18 Using the touch screen
- 21 Home screen layout
- 25 Notifications panel
- 27 Opening apps
- 27 Installing or uninstalling apps
- 29 Entering text
- 30 Screen capture
- 31 My Files
- 33 Ultra power saving mode

Network connectivity

- 34 Mobile data
- 34 Wi-Fi
- 35 Tethering
- 37 Internet

Personalising

- 39 Managing the Home and Apps screens
- 41 Setting wallpaper and ringtones
- 42 Changing the screen lock method
- 43 Private mode
- 44 Transferring data from your previous device
- 45 Setting up accounts

Phone

- 46 Making calls
- 47 Receiving calls
- 48 Options during calls

Contacts

- 50 Adding contacts
- 50 Managing contacts

Messages & email

- 52 Messages
- 54 Email

Camera

- 56 Basic shooting
- 57 Shooting modes
- 59 Camera settings

Gallery

- 60 Viewing photos or videos
- 61 Editing photos

Multimedia

- 62 Music
- 63 Video

Security features

- 65 Help message

Useful apps and features

- 66 FM Radio
- 67 Clock
- 69 Memo
- 70 Calculator
- 70 Calendar

- 72 Voice Recorder
- 73 Facebook
- 74 Google apps

Connecting with other devices

- 75 Bluetooth
- 77 Wi-Fi Direct

Device & data manager

- 79 Upgrading the device
- 80 Transferring files between the device and a computer
- 81 Backing up and restoring data
- 81 Performing a data reset

Settings

- 82 About Settings
- 82 Connections
- 85 Device
- 87 Personalisation
- 90 System

Troubleshooting

Read me first

Please read this manual before using the device to ensure safe and proper use.

- Descriptions are based on the device's default settings.
- Some content may differ from your device depending on the region, service provider, or device's software.
- Content (high quality content) that requires high CPU and RAM usage will affect the overall performance of the device. Apps related to the content may not work properly depending on the device's specifications and the environment that it is used in.
- Samsung is not liable for performance issues caused by apps supplied by providers other than Samsung.
- Samsung is not liable for performance issues or incompatibilities caused by edited registry settings or modified operating system software. Attempting to customise the operating system may cause the device or apps to work improperly.
- Software, sound sources, wallpapers, images, and other media provided with this device are licensed for limited use. Extracting and using these materials for commercial or other purposes is an infringement of copyright laws. Users are entirely responsible for illegal use of media.
- You may incur additional charges for data services, such as messaging, uploading and downloading, auto-syncing, or using location services depending on your data plan. For large data transfers, it is recommended to use the Wi-Fi feature.
- Default apps that come with the device are subject to updates and may no longer be supported without prior notice. If you have questions about an app provided with the device, contact a Samsung Service Centre. For user-installed apps, contact service providers.
- Modifying the device's operating system or installing softwares from unofficial sources may result in device malfunctions and data corruption or loss. These actions are violations of your Samsung licence agreement and will void your warranty.

Instructional icons



Warning: situations that could cause injury to yourself or others



Caution: situations that could cause damage to your device or other equipment



Note: notes, usage tips, or additional information

Getting started

Package contents

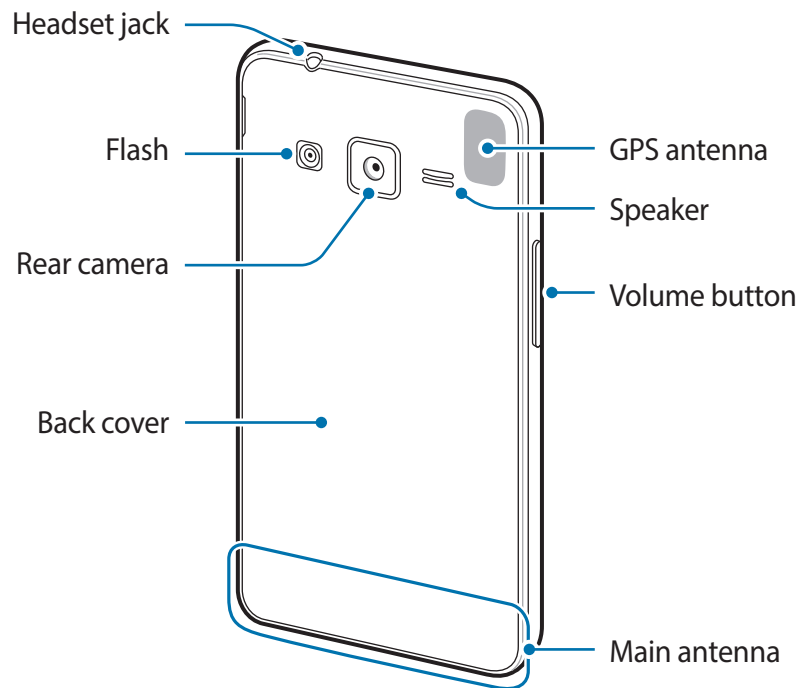
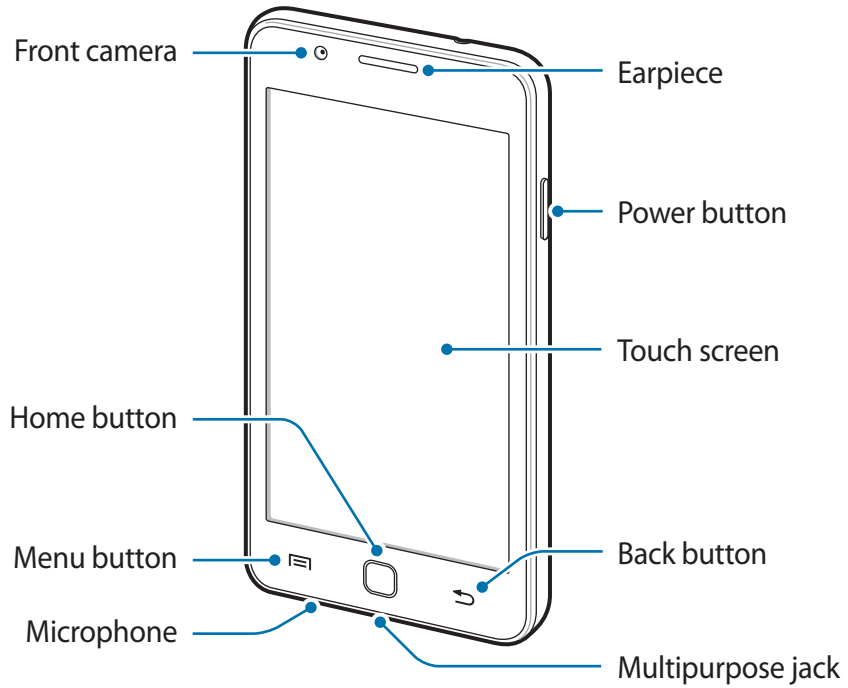
Check the product box for the following items:

- Device
- Battery
- Quick start guide



- The items supplied with the device and any available accessories may vary depending on the region or service provider.
- The supplied items are designed only for this device and may not be compatible with other devices.
- Appearances and specifications are subject to change without prior notice.
- You can purchase additional accessories from your local Samsung retailer. Make sure they are compatible with the device before purchase.
- Use only Samsung-approved accessories. Using unapproved accessories may cause the performance problems and malfunctions that are not covered by the warranty.
- Availability of all accessories is subject to change depending entirely on manufacturing companies. For more information about available accessories, refer to the Samsung website.






Device layout





- Do not cover the antenna area with your hands or other objects. This may cause connectivity problems or drain the battery.
- Using a Samsung-approved screen protector is recommended. Unapproved screen protectors may cause the sensors to malfunction.
- Do not allow water to contact the touch screen. The touch screen may malfunction in humid conditions or when exposed to water.

Buttons

Button	Function
 Power	<ul style="list-style-type: none"> • Press and hold to turn the device on or off. • Press to turn on or lock the screen.
 Menu	<ul style="list-style-type: none"> • Tap to open a list of options available for the current screen.
 Home	<ul style="list-style-type: none"> • Press to turn on the screen while the screen is locked. • Press to return to the Home screen. • Press and hold to open the list of recent apps.
 Back	<ul style="list-style-type: none"> • Tap to return to the previous screen.
 Volume	<ul style="list-style-type: none"> • Press to adjust the device volume.

Using the SIM or USIM card and battery

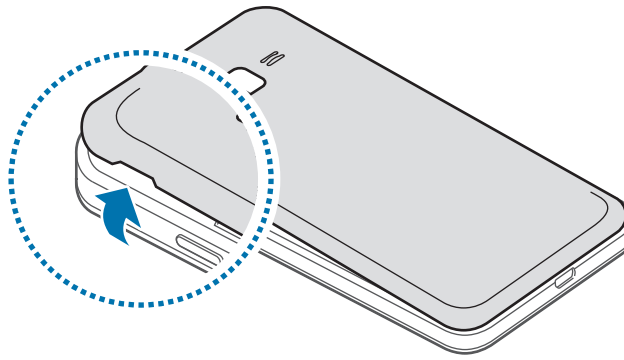
Installing the SIM or USIM card and battery

Insert the SIM or USIM card provided by the mobile telephone service provider, and the included battery.



Only microSIM cards work with the device.

1 Remove the back cover.

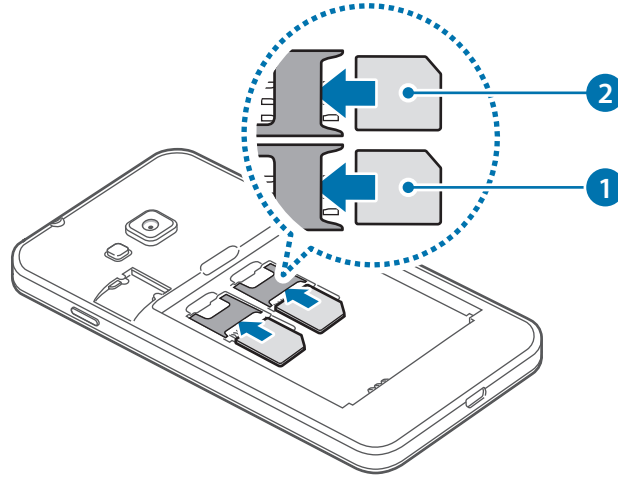


Be careful not to damage your fingernails when you remove the back cover.



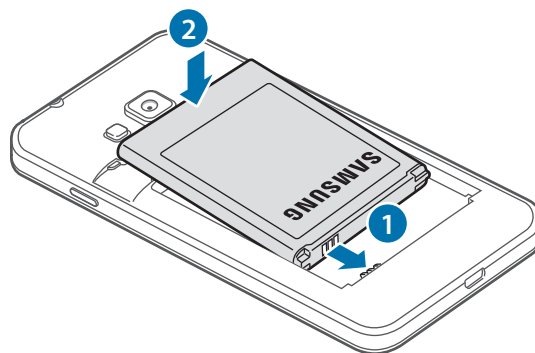
Do not bend or twist the back cover excessively. Doing so may damage the cover.

- 2 Insert the SIM or USIM card with the gold-coloured contacts facing downwards.
Insert the primary SIM or USIM card into SIM card slot 1 (1) and the secondary SIM or USIM card into SIM card slot 2 (2).

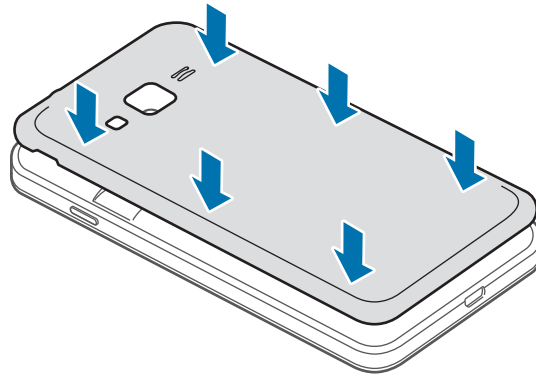


- Do not insert a memory card into the SIM card slot. If a memory card happens to be lodged in the SIM card slot, take the device to a Samsung Service Centre to remove the memory card.
- Use caution not to lose or let others use the SIM or USIM card. Samsung is not responsible for any damages or inconveniences caused by lost or stolen cards.

- 3 Insert the battery with the battery's gold-coloured contacts properly aligned with the device's contacts.

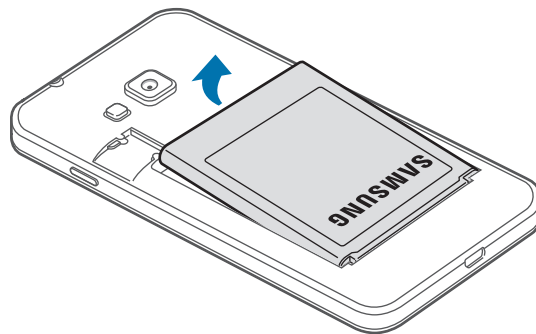


- 4 Replace the back cover.

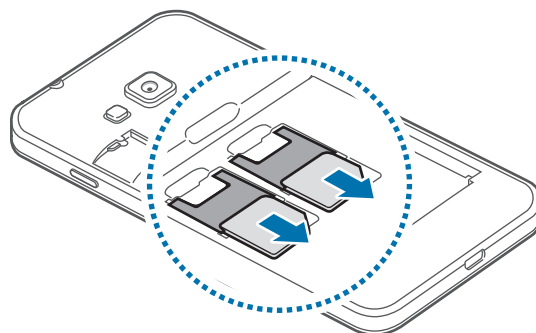


Removing the SIM or USIM card and battery

- 1 Remove the back cover.
- 2 Pull out the battery.



- 3 Pull out the SIM or USIM card.



Using dual SIM or USIM cards

If you insert two SIM or USIM cards, you can have two phone numbers or service providers for a single device.

Activating SIM or USIM cards

Open the Apps screen, tap **Settings** → **SIM card manager**. Tap one or both of the switches for the SIM or USIM cards to activate them.

Changing the display name and icon of SIM or USIM cards

Open the Apps screen, tap **Settings** → **SIM card manager**. Select a SIM or USIM card and tap **Name** or **Icon**. Set a display name and icon for each card.

Switching between cards

When two SIM or USIM cards are activated, card selection icons appear on the dashboard of the notifications panel. Open the notifications panel and then select a card.

Charging the battery

Use the charger to charge the battery before using it for the first time. A computer can be also used to charge the battery by connecting them via the USB cable.

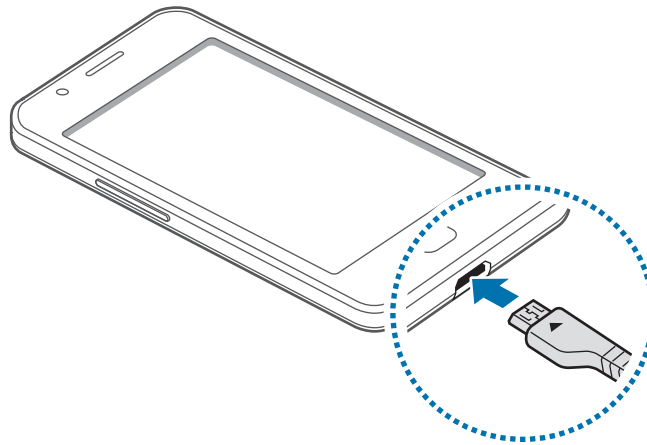


Use only Samsung-approved chargers, batteries, and cables. Unapproved chargers or cables can cause the battery to explode or damage the device.



- When the battery power is low, the battery icon appears empty.
- If the battery is completely discharged, the device cannot be turned on immediately when the charger is connected. Allow a depleted battery to charge for a few minutes before turning on the device.
- If you use multiple apps at once, network apps, or apps that need a connection to another device, the battery will drain quickly. To avoid disconnecting from the network or losing power during a data transfer, always use these apps after fully charging the battery.

Plug the small end of the charger into the multipurpose jack of the device, and plug the large end of the charger into an electric socket.



Connecting the charger improperly may cause serious damage to the device. Any damage caused by misuse is not covered by the warranty.



- The device can be used while it is charging, but it may take longer to fully charge the battery.
- If the device receives an unstable power supply while charging, the touch screen may not function. If this happens, unplug the charger from the device.
- While charging, the device may heat up. This is normal and should not affect the device's lifespan or performance. If the battery gets hotter than usual, the charger may stop charging.
- If the device is not charging properly, take the device and the charger to a Samsung Service Centre.

After fully charging, disconnect the device from the charger. First unplug the charger from the device, and then unplug it from the electric socket.



Do not remove the battery before removing the charger. This may damage the device.



To save energy, unplug the charger when not in use. The charger does not have a power switch, so you must unplug the charger from the electric socket when not in use to avoid wasting power. The charger should remain close to the electric socket and easily accessible while charging.

Reducing the battery consumption

Your device provides options that help you save the battery power. By customising these options and deactivating features in the background, you can use the device longer between charges:

- When you are not using the device, switch to sleep mode by pressing the Power button.
- Close unnecessary apps using the task manager.
- Deactivate the Bluetooth feature.
- Deactivate the Wi-Fi feature.
- Deactivate auto-syncing of apps.
- Decrease the backlight time.
- Decrease the screen brightness.

Using a memory card

Installing a memory card

Your device accepts memory cards with maximum capacities of 32 GB. Depending on the memory card manufacturer and type, some memory cards may not be compatible with your device.

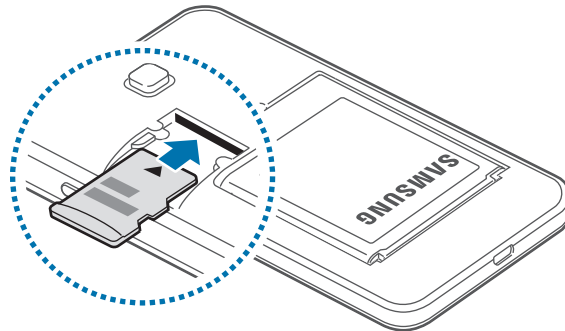


- Some memory cards may not be fully compatible with the device. Using an incompatible card may damage the device or the memory card, or corrupt the data stored in it.
- Use caution to insert the memory card right-side up.



- The device supports the FAT file system for memory cards. When inserting a card formatted in a different file system, the device asks to reformat the memory card.
- Frequent writing and erasing of data shortens the lifespan of memory cards.
- When inserting a memory card into the device, the memory card's file directory appears in the **My Files** → **SD card** folder.

- 1 Remove the back cover.
- 2 Insert a memory card with the gold-coloured contacts facing downwards.




- 3 Replace the back cover.

Removing the memory card

Before removing the memory card, first unmount it for safe removal. Open the Apps screen, tap **Settings** → **Power and storage** → an image under **Storage** → **Unmount SD card** → **Unmount**.

- 1 Remove the back cover.
- 2 Pull out the memory card.
- 3 Replace the back cover.

 Do not remove the memory card while the device is transferring or accessing information. Doing so can cause data to be lost or corrupted or can damage the memory card or device. Samsung is not responsible for losses that result from the misuse of damaged memory cards, including the loss of data.

Formatting the memory card

A memory card formatted on a computer may not be compatible with the device. Format the memory card on the device.

Open the Apps screen, tap **Settings** → **Power and storage** → an image under **Storage** → **Format SD card** → **Format** → **Format**.



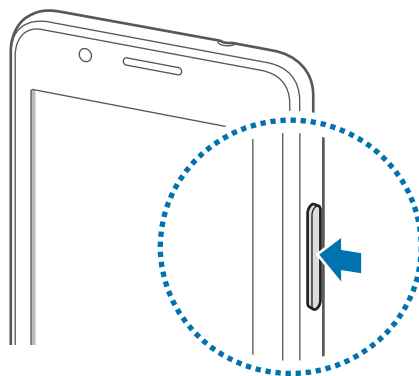
Before formatting the memory card, remember to make backup copies of all important data stored in the device. The manufacturer's warranty does not cover loss of data resulting from user actions.

Turning the device on and off

Press and hold the Power button for a few seconds to turn on the device.

When you turn on your device for the first time or after performing a data reset, follow the on-screen instructions to set up your device.

To turn off the device, press and hold the Power button, and then tap **Power off**.

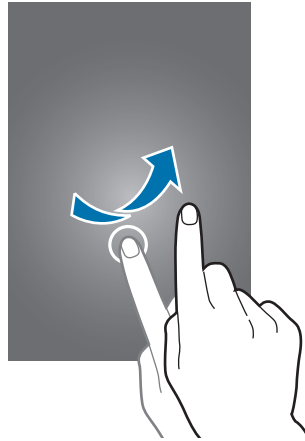


Follow all posted warnings and directions from authorised personnel in areas where the use of wireless devices is restricted, such as aeroplanes and hospitals.

Locking and unlocking the screen

Pressing the Power button turns off the screen and locks it. Also, the screen turns off and automatically locks if the device is not used for a specified period.

To unlock the screen, press the Power button or the Home button and flick your finger in any direction within the unlock screen area.



You can change the unlock code to unlock the screen. Refer to [Changing the screen lock method](#) for more information.

Basics

Using the touch screen



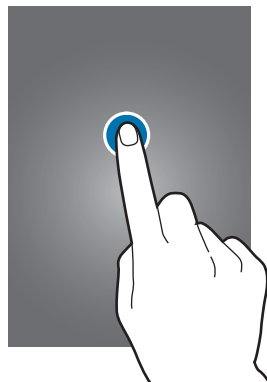
- Do not allow the touch screen to come into contact with other electrical devices. Electrostatic discharges can cause the touch screen to malfunction.
- To avoid damaging the touch screen, do not tap it with anything sharp or apply excessive pressure to it with your fingertips.



- The device may not recognise touch inputs close to the edges of the screen, which are outside of the touch input area.
- Leaving the touch screen idle for extended periods may result in afterimages (screen burn-in) or ghosting. Turn off the touch screen when you do not use the device.
- It is recommended to use fingers when you use the touch screen.

Tapping

To open an app, to select a menu item, to press an on-screen button, or to enter a character using the keyboard on the screen, tap it with a finger.



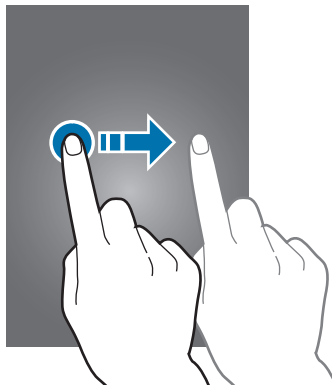
Tapping and holding

Tap and hold an item or the screen for more than 2 seconds to access available options.



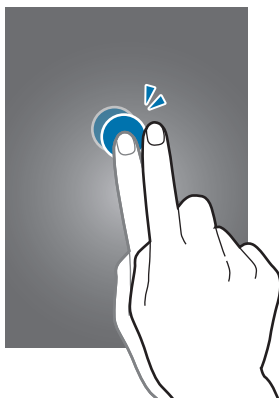
Dragging

To move an item, tap and hold it and drag it to the target position.



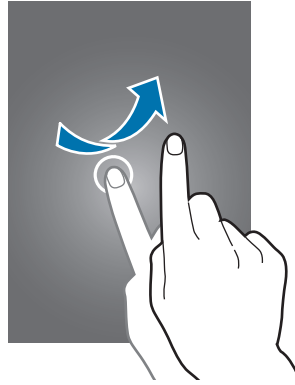
Double-tapping

Double-tap on a webpage or image to zoom in. Double-tap again to return.



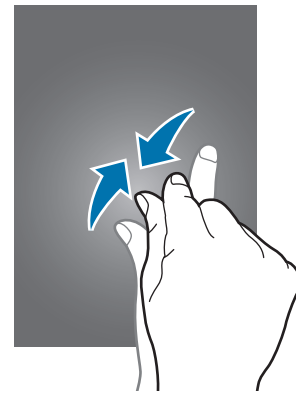
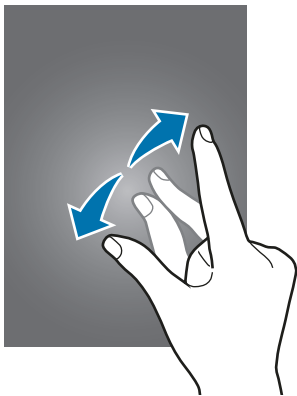
Flicking

Flick left or right on the Home screen or the Apps screen to see another panel. Flick up or down to scroll through a webpage or a list of items, such as contacts.



Spreading and pinching

Spread two fingers apart on a webpage, map, or image to zoom in a part. Pinch to zoom out.

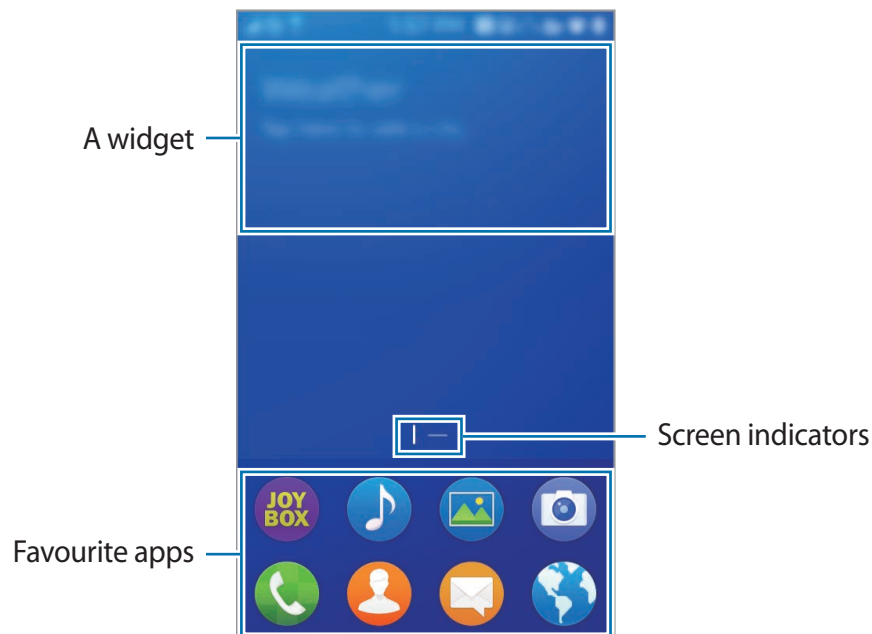


Home screen layout


Home screen

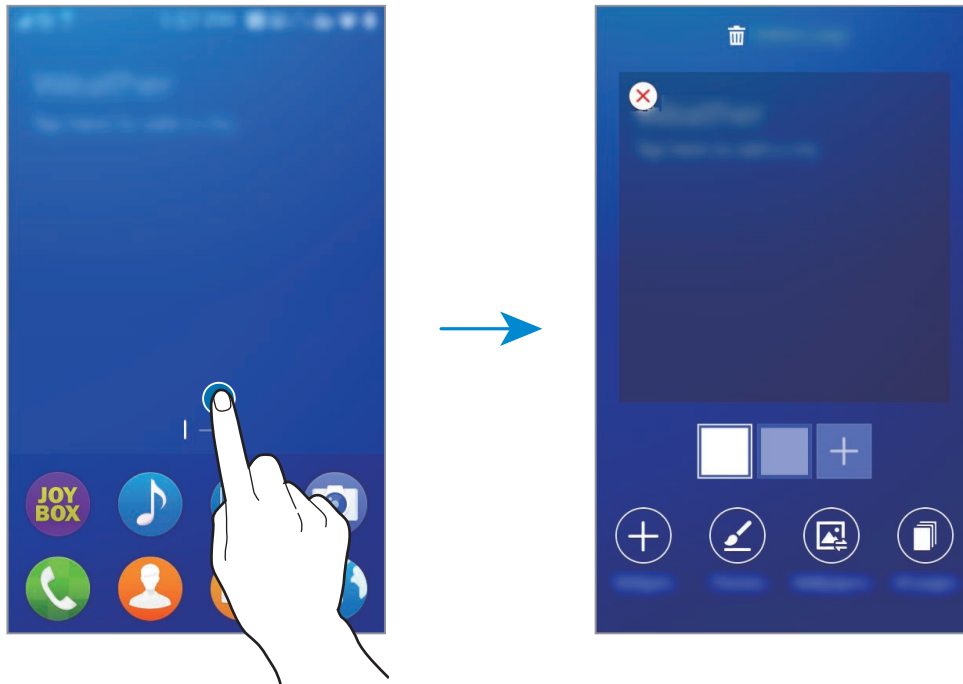
The Home screen is the starting point for accessing all of the device's features. It displays widgets, favourite apps, and more. Widgets are small apps that launch specific app functions to provide information and convenient access on your Home screen.

To view other panels, scroll left or right, or tap one of the screen indicators at the bottom of the screen. To customise the Home screen, refer to [Managing the Home screen](#).



Home screen options

On the Home screen, tap and hold an empty area, or tap  to access the available options.



Apps screen

The Apps screen displays icons for all apps, including newly installed apps.

On the Home screen, drag the favourite apps panel upwards to open the Apps screen. To view other panels, scroll left or right, or select a screen indicator at the bottom of the screen.

To customise the Apps screen, refer to [Managing the Apps screen](#).



Indicator icons

Indicator icons appear on the status bar at the top of the screen. The icons listed in the table below are most common.



The status bar may not appear at the top of the screen in some apps. To display the status bar, drag down from the top of the screen.

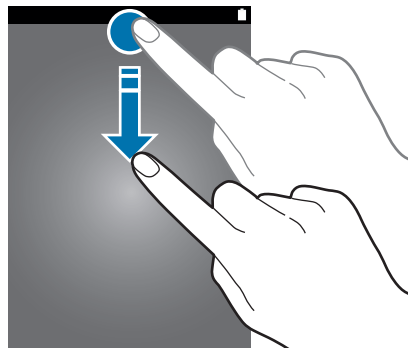
Icon	Meaning
	No signal
	Signal strength
	Roaming (outside of normal service area)
	GPRS network connected
	UMTS network connected
	HSDPA network connected
	HSPA+ network connected
	Wi-Fi connected
	Bluetooth feature activated
	Location feature activated
	Call in progress
	Missed call
	Synced with the web
	Connected to computer
	No SIM or USIM card
	New text or multimedia message
	Alarm activated
	Mute mode activated
	Vibration mode activated
	Flight mode activated
	Battery power level

Notifications panel

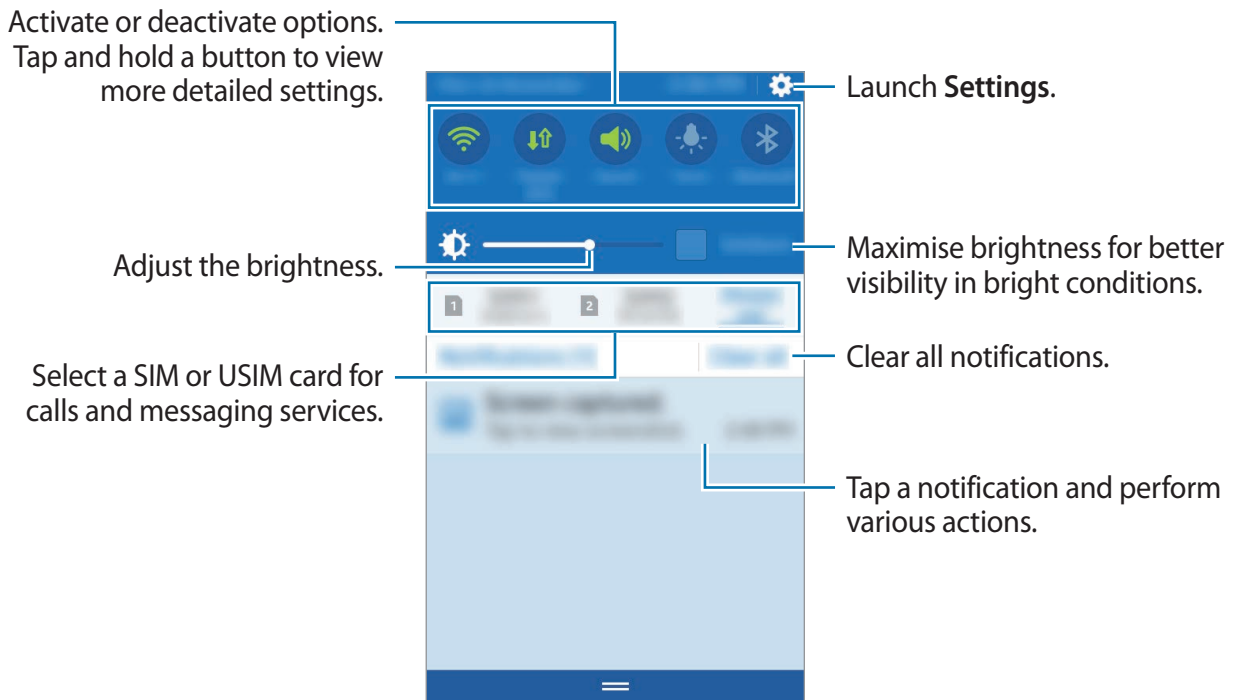
Using the notifications panel

When you receive new notifications, such as messages or missed calls, indicator icons appear on the status bar. To see more information about the icons, open the notifications panel and view the details.

To open the notifications panel, drag the status bar downwards. To close the notifications panel, drag the bar from the bottom of the screen upwards.



You can use the following functions on the notifications panel.



Using the quick setting buttons

You can activate or deactivate some features on the notifications panel. Tap the following options to activate or deactivate them. You can view more detailed settings if you tap and hold a button.

- **Wi-Fi:** Refer to [Wi-Fi](#) for more information.
- **Mobile data:** Refer to [Mobile network](#) for more information.
- **Sound / Vibrate / Mute:** Select a sound mode.
- **Torch:** Turn the flash on or off.
- **Bluetooth:** Refer to [Bluetooth](#) for more information.
- **U. power saving:** Refer to [Ultra power saving mode](#) for more information.
- **Auto rotate:** Allow or prevent the interface from rotating when you rotate the device.



Some apps do not allow screen rotation.

- **Location:** Refer to [Location](#) for more information.
- **Wi-Fi tethering:** Refer to [Tethering](#) for more information.
- **Flight mode:** Refer to [Flight mode](#) for more information.

Opening apps

On the Home screen or the Apps screen, select an app icon to open it.

To open the list of recently-used apps, press and hold the Home button and select an app icon to open.

Closing an app

Press and hold the Home button, and then drag an app icon to the left or right to close it. To close all running apps, tap **Clear all**.

Installing or uninstalling apps

Tizen Store

Use this app to purchase and download apps. Visit www.tizenstore.com for more information.

Tap **Tizen Store** on the Apps screen.



This app may not be available depending on the region or service provider.



Installing apps


Browse apps by category or tap **SEARCH** to search for a keyword.

Select an app to view information about it. To download free apps, tap **Get**. To purchase and download apps where charges apply, tap **Buy** and follow the on-screen instructions.


Managing apps

Uninstalling or disabling apps

To disable default apps, open the Apps screen and tap and hold an app.  appears on the apps that you can disable. Tap  → **Disable**.

To uninstall downloaded apps, open the Apps screen, tap and hold an app, and then tap  → **Uninstall**. Alternatively, on the Apps screen, tap **Settings** → **Application manager**, select an app, and then tap **Uninstall**.

Enabling apps

On the Apps screen, tap  → **Show disabled applications**, select apps, and then tap **DONE**. Alternatively, on the Apps screen, tap **Settings** → **Application manager**, scroll to **Disabled**, select an app, and then tap **Enable**.



- Hiding apps: Hide apps in the Apps screen only. You can continue to use hidden apps.
- Disabling apps: Disable selected default apps that cannot be uninstalled from the device. You cannot use disabled apps.
- Uninstalling apps: Uninstall downloaded apps.

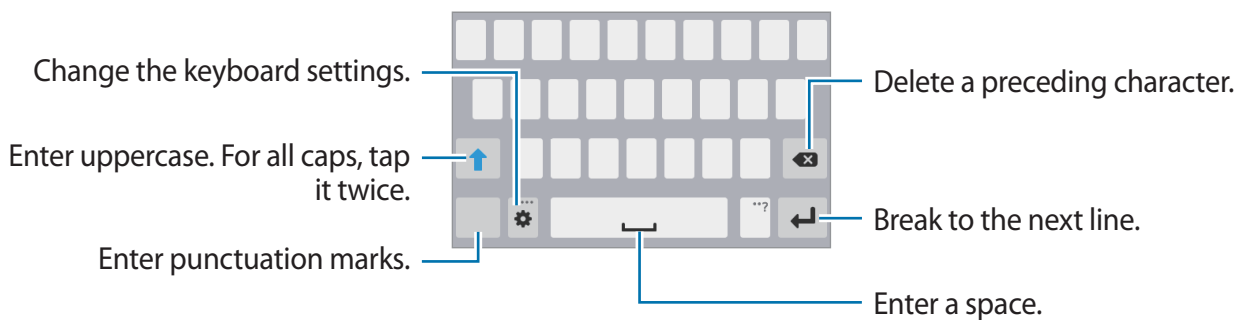
Entering text

Keyboard layout


A keyboard appears automatically when you enter text to send messages, create memos, and more.



Text entry is not supported in some languages. To enter text, you must change the input language to one of the supported languages.



Changing the input language

Tap  → **Select input languages**, and then select the languages to use. If you select two or more languages, you can switch between the input languages by sliding the space key left or right.



Changing the keyboard layout




Tap , select a language under **Input languages**, and then select a keyboard layout to use.




On **3 x 4 keyboard**, a key has three or four characters. To enter a character, tap the corresponding key repeatedly until the desired character appears.

Using additional keyboard functions

Tap and hold  to use various functions. Other icons may appear instead of the  icon depending on the last function that was used.


- : Add an item from the clipboard.
- : Change the keyboard settings.
- : Enter emoticons.

Copying and pasting

- 1 Tap and hold over text.
- 2 Tap **Select** and drag  to select the desired text, or tap **Select all** to select all text.
- 3 Tap **Copy** or **Cut**. The selected text is copied to the clipboard.
- 4 Place the cursor where the text is to be inserted, tap and hold the cursor, and then tap **Paste**. To paste text that you have previously copied, tap and hold the cursor, tap **Clipboard**, and then select the text.

Screen capture

Capture a screenshot while using the device.

Press and hold the Home button and the Power button simultaneously. The image is saved in the **Gallery** →  → **View as** → **Albums** → **Screenshots** folder. After capturing a screenshot, you can edit the image and share it with others.



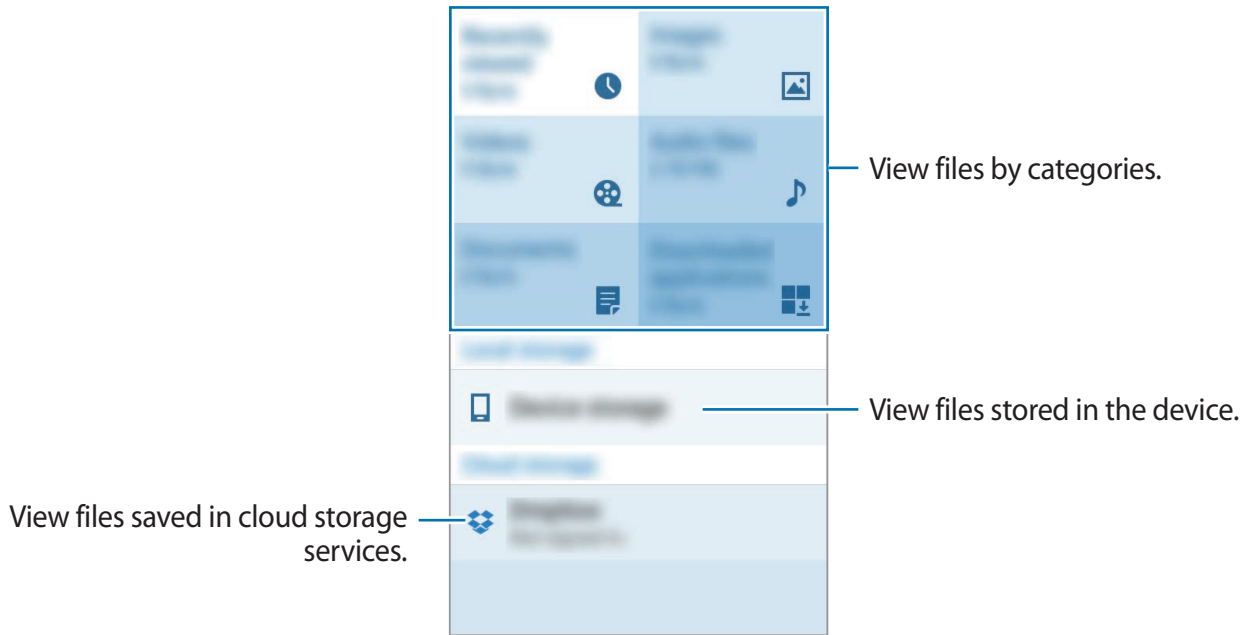
It is not possible to capture a screenshot while using some apps.

My Files

About My Files

Use this app to access various files stored in the device or in other locations, such as cloud storage services.

Tap **My Files** on the Apps screen.



Tap  and use the following options:

- **Search:** Search for files or folders.
- **Storage usage:** View storage information.
- **Add shortcut:** Add a shortcut to a folder on the My Files main screen.

Viewing files

Tap **My Files** on the Apps screen.

Select a folder to open it. To go up a level in the directory, tap ↶.

Select a folder, tap ≡, and then use the following options:

- **Search:** Search for files or folders.
- **Share via:** Share files with others.
- **Delete:** Delete files or folders.
- **Move:** Move files or folders to another folder.
- **Copy:** Copy files or folders to another folder.
- **Create folder:** Create a folder.
- **Rename:** Rename a file or folder.
- **Add shortcut:** Add a shortcut to a folder on the My Files main screen.
- **View as:** Change the view mode.
- **Sort by:** Sort files or folders.
- **Details:** View file or folder details.
- **Show hidden files / Do not show hidden files:** Show or hide the files and folders set to be hidden by default.



The available options may differ depending on the selected folder.

Ultra power saving mode

Use this mode to extend the device's battery power. In ultra power saving mode, the device performs the following:

- Restricts the available apps to essential and selected apps only.
- Deactivates the mobile data connection when the screen turns off.
- Deactivates the Wi-Fi and Bluetooth features.

- 1 On the Apps screen, tap **Settings** → **Power and storage** → an image under **Battery** → **Ultra power saving mode**, and then tap the **Ultra power saving mode** switch to activate it. Alternatively, open the notifications panel and tap **U. power saving** to activate it.
- 2 Read and agree to the terms and conditions, and then tap **Next**.
- 3 Read the on-screen information about the mode and tap **Enable**.

To deactivate ultra power saving mode, tap  → **Disable Ultra power saving** → **Disable**.



The estimated maximum standby time shows the time remaining before the battery power runs out if the device is not used. Standby time may vary depending on your device settings and operating conditions.

Network connectivity

Mobile data

Connect the device to a mobile network to use the Internet or share media files with other devices. Refer to [Mobile network](#) for additional options.

On the Apps screen, tap **Settings** → **Mobile network**, and then tap the **Mobile data** switch to activate it.

Wi-Fi

Connect the device to a Wi-Fi network to use the Internet or share media files with other devices. Refer to [Wi-Fi](#) for additional options.





Turn off Wi-Fi to save the battery when not in use.


- 1 On the Apps screen, tap **Settings** → **Wi-Fi**, and then tap the **Wi-Fi** switch to activate it.
- 2 Select a network from the Wi-Fi networks list. Networks that require a password appear with a lock icon.
- 3 Tap **Connect**.



Once the device connects to a Wi-Fi network, the device will reconnect to that network each time it is available without requiring a password.


To prevent the device from connecting to the network automatically, tap  next to the network, and then tap  → **Forget**.

Finding hidden Wi-Fi networks

If the desired network does not appear in the Wi-Fi networks list, tap  → **Find hidden network**. Enter the network name, and then tap **Find**.

Using Smart network switch

Use this feature to maintain a stable network connection when you browse webpages, download content, and more.

On the Apps screen, tap **Settings** → **Wi-Fi** →  → **Advanced**, and then tap the **Smart network switch** switch. The device automatically switches from a Wi-Fi network to a mobile network when the current Wi-Fi network is weak or unstable. When the Wi-Fi network signal becomes strong, the device switches from the mobile network back to the Wi-Fi network.

Tethering

About tethering and mobile hotspots


Use this feature to share the device's mobile data connection with computers and other devices if an Internet connection is unavailable. Connections can be made via Wi-Fi, USB, or Bluetooth.



You may incur additional charges when using this feature.

Using the mobile hotspot


Use your device as a mobile hotspot to share your device's mobile data connection with other devices.

- 1 On the Apps screen, tap **Settings** → **Tethering**.
- 2 Tap the **Wi-Fi tethering** switch to activate it.
 -  appears on the status bar. Other devices can find your device in the Wi-Fi networks list.
 - To set a password for the mobile hotspot, tap **Wi-Fi tethering**, and then tap the **Security** switch to activate it. Enter a password and tap **DONE**.

- 3 On the other device's screen, search for and select your device from the Wi-Fi networks list.
- 4 On the connected device, use the device's mobile data connection to access the Internet.



Using USB tethering

Share the device's mobile data connection with other devices via a USB cable.

- 1 On the Apps screen, tap **Settings** → **Tethering**.
- 2 Connect your device to the computer via the USB cable.
- 3 Tap the **USB tethering** switch to activate it.
 appears on the status bar when the two devices are connected.
- 4 On the computer, use your device's mobile data connection.

Using Bluetooth tethering

Share the device's mobile data connection with other devices via Bluetooth. Ensure that the computer that you connect to supports the Bluetooth feature.

- 1 Pair your device with the other device via Bluetooth. Refer to [Pairing with other Bluetooth devices](#) for more information.
- 2 On the Apps screen of your device, tap **Settings** → **Tethering**.
- 3 Tap the **Bluetooth tethering** switch to activate it.
- 4 On the connected device, open the Bluetooth settings screen, tap , and then tap the **Internet access** switch to activate it.
 appears on the status bar when the two devices are connected.
- 5 On the connected device, use the device's mobile data connection to access the Internet.



The connection methods may vary depending on the connected devices.

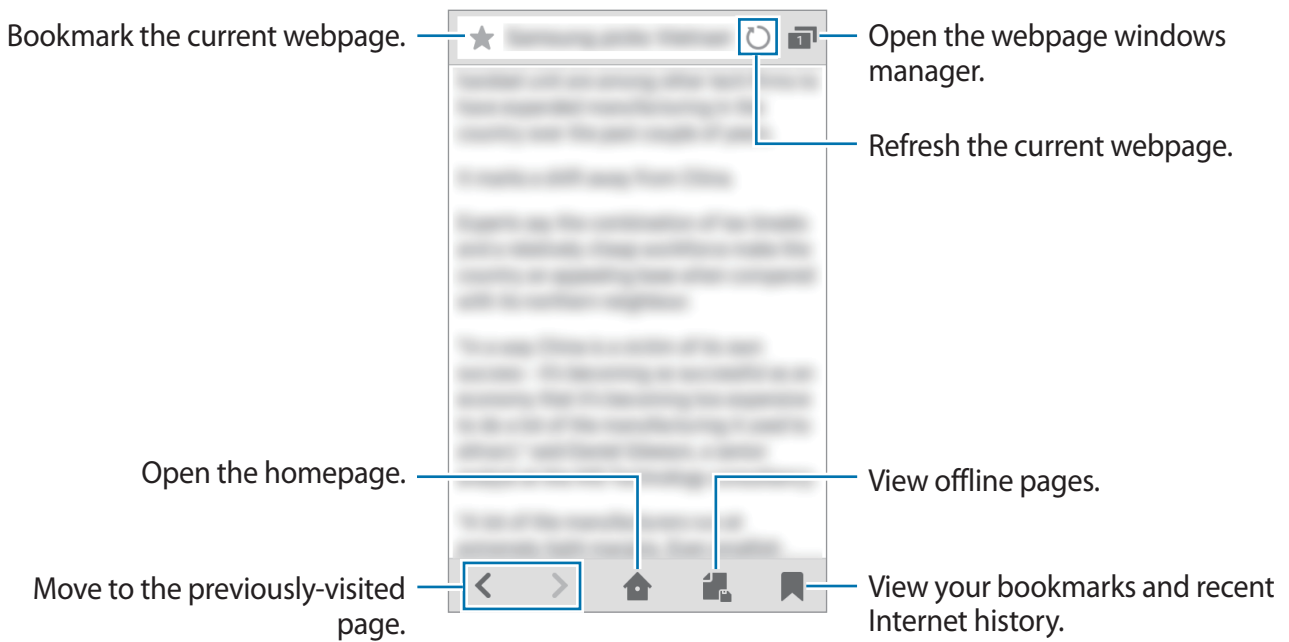
Internet

Browsing webpages

- 1 Tap **Internet** on the Apps screen.
- 2 Tap the address field. To change the search engine, tap the search engine icon next to the web address field.
- 3 Enter the web address or a keyword, and then tap **Go**.

To view the toolbars, drag your finger downwards slightly on the screen.

To save the current page for offline viewing, tap  → **Read on offline pages later**.



Setting the homepage

Tap **Internet** on the Apps screen.


Tap  → **Settings** → **Set homepage**, and then select one of the following:


- **Default page:** Set the device's default webpage as your homepage.
- **Current page:** Set the current webpage as your homepage.
- **Quick access:** Set the quick access list as your homepage.
- **Most visited sites:** Set the list of most-visited webpages as your homepage.
- **Other:** Set a preset webpage as your homepage.


While viewing a webpage, tap  to open the homepage.

Managing the quick access list

You can quickly access your frequently-visited webpages by adding them to the quick access list.

To add a webpage to the quick access list, open the webpage that you want to add. Then, tap  → **Add to Quick access**.

To add web apps to the quick access list, open the quick access list, tap **More**, and then tap  next to web apps.

To delete webpages from the quick access list, tap  → **Delete**, select webpage icons to delete, and then tap **DELETE**.

Managing the webpage history

Tap **Internet** on the Apps screen.

Tap  → **History** to open a webpage from the list of recently-visited webpages.

To delete webpages, tap  → **Delete**, select webpages to delete, and then tap **DELETE**.

Personalising

Managing the Home and Apps screens

Managing the Home screen


Adding widgets

On the Home screen, tap and hold an empty area, tap , and then tap a widget.

Moving and removing an item


Tap and hold an item on the Home screen, and then drag it to a new location.

To move the item to another panel, drag it to the side of the screen.

To remove an item, tap and hold the item, and then tap .


Managing panels

On the Home screen, tap and hold an empty area to add, move, or remove a panel.

To add a panel, tap .

To move a panel, tap , tap and hold a panel preview, and then drag it to a new location.

To remove a panel, tap  → .

To set a panel as the main Home screen, tap , tap and hold the panel, and then drag it to the top left position.

Managing the favourite apps panel

The favourite apps panel is at the lower part of the Home screen. You can add frequently-used apps to the panel.

On the Apps screen, tap  → **Edit**, tap and hold an item, and then drag it to a new location.

To remove an item from the panel, tap and hold an item and drag it to the Apps screen.

Managing the Apps screen

Changing the sorting method

On the Apps screen, tap  → **Sort items** and select a sorting method.

Hiding apps

Hide apps that you do not want to see on the Apps screen.

On the Apps screen, tap  → **Hide applications**, select apps, and then tap **DONE**.

To display hidden apps, tap  → **Show hidden applications**, select apps, and then tap **DONE**.

Moving items

On the Apps screen, tap  → **Edit**. Tap and hold an item and drag it to a new location.


To move the item to another panel, drag it to the side of the screen.

To move an item to a new panel, tap and hold it. Then, drag it to the right side of the last panel and release it on the new panel.




This feature is available only in the customisable grid view.

Creating folders

- 1 On the Apps screen, tap  → **Create folder**.
- 2 Tick apps to move to the folder and tap **DONE**.
- 3 Enter a folder name and tap **Done**.

Managing folders

To rename a folder, select a folder and tap the existing folder name. Enter a new name for the folder and tap **Done**.


To move more apps to a folder, tap  → **Edit**, tap and hold an app, and then drag it to the folder.

To move an app from a folder, select a folder, tap and hold an app, and then drag it to a new location.

Setting wallpaper and ringtones

Setting wallpaper

Set an image or photo stored in the device as wallpaper for the Home screen or the locked screen.

- 1 On the Home screen, tap and hold an empty area, and then tap . Alternatively, on the Apps screen, tap **Settings** → **Themes and wallpapers** → **Wallpapers**.
- 2 Scroll left or right and select a screen to change wallpaper.
- 3 Select an option and an image.
- 4 Tap **DONE**.

Changing ringtones

Change ringtones for incoming calls and notifications.

On the Apps screen, tap **Settings** → **Sound**.

To set a ringtone for incoming calls, tap **Ringtone**, select a ringtone, and then tap **DONE**.

Changing the screen lock method

You can change the way that you lock the screen to prevent others from accessing your personal information.

On the Apps screen, tap **Settings** → **Lock screen and security** → **Lock screen** → **Screen lock type**, and then select a screen lock method. The device requires an unlock code whenever unlocking it.



If the unlock code is forgotten, take the device to a Samsung Service Centre to reset it.

PIN

A PIN consists of numbers only. Enter four numbers, and then enter the password again to verify it.

Password

A password consists of characters and numbers. Enter at least four characters including numbers and symbols, and then enter the password again to verify it.

Private mode

About private mode


Hide personal content in your device to prevent others from accessing it.

In private mode, you can hide items in **My Files**.

Setting up private mode


- 1 On the Apps screen, tap **Settings** → **Privacy and safety** → **Private mode**.
- 2 Read the on-screen information and tap **Next**.
- 3 Read the on-screen information about using this feature and tap **Next**.
- 4 Tap **Next**, select a private mode access method, and then follow the on-screen instructions to complete the setup.

Hiding content


- 1 On the Apps screen, tap **Settings** → **Privacy and safety** → **Private mode**, and then tap the **Private mode** switch to activate it.
- 2 Enter the preset private mode access code.
- 3 On the Apps screen, tap **My Files** and select a folder.
- 4 Tap  → **Move to Private**, tick the items, and then tap **DONE**.

Viewing hidden content

You can only view hidden items when private mode is activated.

- 1 On the Apps screen, tap **Settings** → **Privacy and safety** → **Private mode**, and then tap the **Private mode** switch to activate it.
- 2 Follow the on-screen instructions to enter the preset private mode access code.
- 3 On the Apps screen, launch an app including hidden content, such as music, videos, images, and documents.
- 4 Select the private folder or hidden files identified with the  icon.

Unhiding content

- 1 On the Apps screen, tap **My Files**.
- 2 Tap **Private**, select a folder, and then  → **Remove from Private**.
- 3 Tick the items to unhide and tap **DONE**.
The items will be moved to their original folders.

Transferring data from your previous device

Using backup accounts

You can transfer backup data from your previous device to your new device using your Samsung account. Refer to [Backing up and restoring data](#) for more information.

Using Samsung Smart Switch

You can transfer data of the previous device to a new device via Smart Switch (for mobiles). Visit www.samsung.com/smarts witch for more information.



Samsung Smart Switch is not supported on some devices.

Use this app to transfer data from your previous smartphone to your new device. You can download the app from **Tizen Store**, **GALAXY Apps**, or **Play Store**.

- 1 Place your previous device within 20 cm of your new device.
- 2 On the Apps screen of your new device, tap **Smart Switch Mobile**.
- 3 On your previous device, launch the Smart Switch Mobile app. Select data to transfer and tap the transfer button.
- 4 On your new device, tap **OK** to receive the data.

Using Samsung Kies

Import a backup of your data from your computer via Samsung Kies to restore data on your device. You can also back up data to the computer via Samsung Kies. Refer to [Connecting with Samsung Kies](#) for more information.

Setting up accounts


Adding accounts

Some apps used on your device require a registered account. Create accounts to have the best experience with your device.

On the Apps screen, tap **Settings** → **Accounts** and select an account service. Then, follow the on-screen instructions to complete the account setup.

To sync content with your accounts, select an account and tap the switch next to items.



Removing accounts

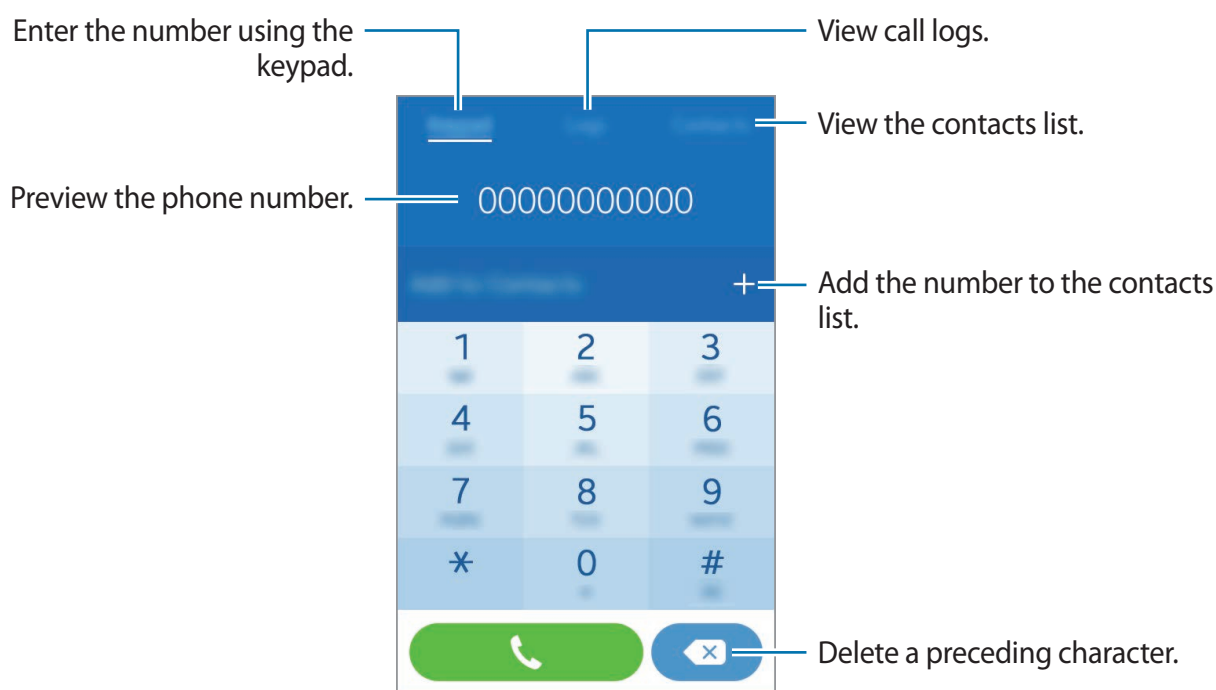
On the Apps screen, tap **Settings** → **Accounts**, select an account, and then tap  → **Remove** or **Remove account**.

Phone

Making calls

Tap **Phone** on the Apps screen.

Tap **Keypad**, enter a phone number, and then tap  to make a voice call, or tap  → **Video call** to make a video call. You can also make calls to phone numbers listed in **Logs** and **Contacts**.



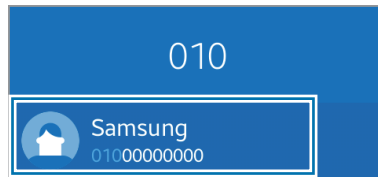
Making calls from call logs or contacts list

Tap **Logs** or **Contacts**, and then select a contact or a phone number to make a call.

Number prediction

Tap **Keypad**.


When entering numbers on the keypad, automatic predictions appear. Select one of these to make a call.



Speed dial numbers


Tap **Keypad**.

For speed dial numbers, tap and hold the corresponding digit.

To assign a contact to a speed dial number, tap and hold an available speed dial number on the keypad, tap **OK**, and then select a contact. Alternatively, tap  → **Speed dial settings**, select a number, and then select a contact.

Making an international call

Tap **Keypad**.

Tap and hold **0** until the + sign appears. Enter the country code, area code, and phone number, and then tap .

Receiving calls

Answering a call

When a call comes in, drag  outside the large circle.

If the call waiting service is activated, another call can be answered. When a second call comes in, end or hold the first call.



Rejecting a call

When a call comes in, drag  outside the large circle.


To send a message when rejecting an incoming call, drag the reject message bar upwards.

To create various rejection messages, open the Apps screen and tap **Phone** → **Keypad** →  → **Call settings** → **Call rejection** → **Call-reject messages** →  → **Create**.

Automatically rejecting calls from unwanted numbers


- 1 Tap **Phone** on the Apps screen.
- 2 Tap **Keypad** →  → **Call settings** → **Call rejection** → **Auto reject mode** → **Call block list**.
- 3 Tap **Call block list** →  → **Add**.
- 4 Tap **DONE**.

Missed calls

If a call is missed,  appears on the status bar. Open the notifications panel to view the list of missed calls. Alternatively, on the Apps screen, tap **Phone** → **Logs** to view missed calls.




Options during calls

During a voice call

During a voice call, the device automatically locks the screen to prevent unwanted touch inputs. To unlock the screen, double-tap .







The following actions are available:

- **Speaker:** Activate or deactivate the speakerphone. When using the speakerphone, speak into the microphone at the top of the device and keep the device away from your ears.
- **Keypad:** Open the keypad.

- **Bluetooth:** Switch to a Bluetooth headset if it is connected to the device.
- **Add call:** Dial a second call.
- **Mute:** Turn off the microphone so that the other party cannot hear you.
- **Extra vol.:** Increase the volume.
- : End the current call.
-  → **Hold:** Hold a call. Tap **Resume** to retrieve the held call.
-  → **Contacts:** Open the contacts list.

During a video call

The following actions are available:

- **Switch:** Switch between the front and rear cameras.
- **Mute:** Turn off the microphone so that the other party cannot hear you.
- : End the current call.
-  → **Hide me:** Hide your image from the other party.
-  → **Outgoing image:** Select an image to show it to the other party.
-  → **Keypad:** Open the keypad.
-  → **Turn off speaker / Turn on speaker:** Activate or deactivate the speakerphone. When using the speakerphone, speak into the microphone at the top of the device and keep the device away from your ears.
-  → **Switch to headset / Switch to phone:** Switch sound output to a connected Bluetooth headset or back to the device's speaker.




Contacts

Adding contacts

Moving contacts from other devices

You can move contacts from other devices to your device. Refer to [Transferring data from your previous device](#) for more information.

Creating contacts manually


- 1 On the Apps screen, tap **Contacts**.
- 2 Tap  → **Create** and enter contact information.
 -  : Add an image.
 -  : Delete a contact field.

- 3 Tap **DONE**.

To add a phone number to the contacts list from the keypad, tap **Keypad**, enter the number, and then tap **Add to Contacts**.

Managing contacts

Editing a contact

- 1 On the Apps screen, tap **Contacts**.
- 2 Select a contact to edit and tap  → **Edit**.

3 Edit the contact information.

4 Tap **DONE**.

Deleting a contact

Select a contact to delete and tap  → **Delete** → **Delete**.


Sharing a contact

Select a contact to share, tap  → **Share via**, and then select a sharing method.

Importing and exporting contacts

Import contacts from storage services to your device or export contacts from the device to storage services.

On the Apps screen, tap **Contacts**.

Tap  → **Settings** → **Import** or **Export**, and then select an import or export option.






Searching for contacts

On the Apps screen, tap **Contacts**.

Use one of the following search methods:

- Scroll up or down the contacts list.
- Drag a finger along the index at the right side of the contacts list to scroll through it quickly.
- Tap the search field at the top of the contacts list and enter search criteria.

Once a contact is selected, take one of the following actions:

-  : Add to favourite contacts.
-  /  : Make a voice or video call.
-  : Compose a message.
-  : Compose an email.

Messages & email


Messages

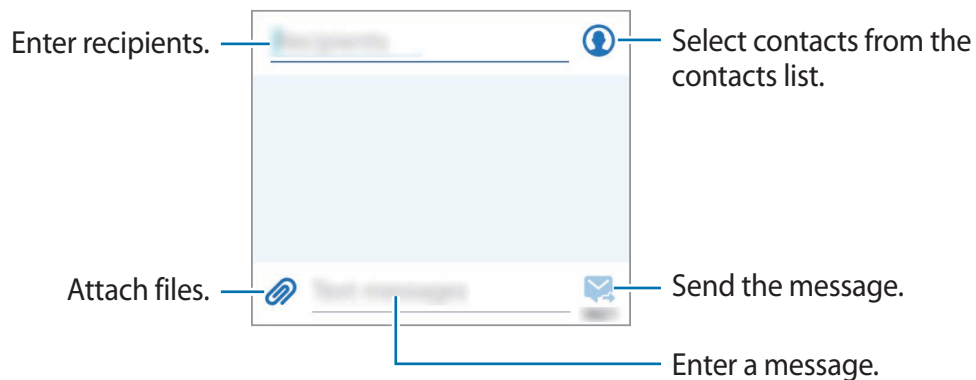
Sending messages

Send text messages (SMS) or multimedia messages (MMS).



You may incur additional charges for sending or receiving messages when you are roaming.

- 1 Tap **Messages** on the Apps screen.
- 2 Tap .
- 3 Add recipients and enter a message.



- 4 Tap  and select a SIM or USIM card to send the message.

Viewing incoming messages

Incoming messages are grouped into message threads by contact. Select a contact to view the person's messages.



You may incur additional charges for sending or receiving messages when you are roaming.

While viewing a message, tap  to use one of the following options:

- **Delete:** Delete messages.
- **Add tag:** Add a tag to the contact.
- **Save message as draft:** Save the message for later delivery.
- **Add to block list / Remove from block list:** Identify a phone number as spam or remove a phone number from the spam list.

Managing messages

While viewing the list of messages, tap  and use the following options:

- **Search:** Search for a message.
- **Delete:** Delete message threads.
- **Add tag:** Add a tag to contacts.
- **Blocked messages:** View blocked messages.
- **Settings:** Change message settings.

Email


Setting up email accounts

Tap **Email** on the Apps screen.

Set up an email account when opening **Email** for the first time.

Select an email service and enter the email address and password. Tap **Next** for a private email account or tap **Manual setup** for a company email account. After that, follow the on-screen instructions to complete the setup.

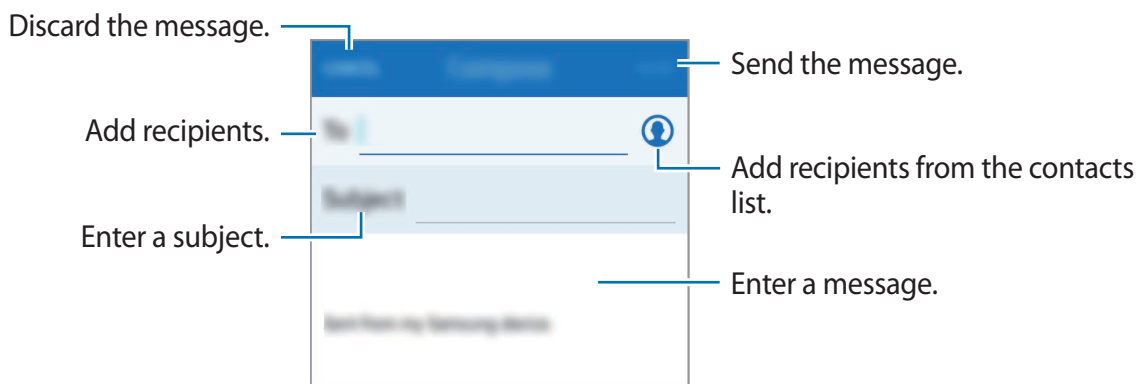
To set up another email account, tap  → **Settings** →  → **Add account**.

If you have more than one email account, you can set one as the default account. Tap  → **Settings** → **Default sending account**, and select an account.

Sending emails

Tap **Email** on the Apps screen.

Tap  to compose a message.



Accessing additional options

While composing a message, tap  and access additional options.

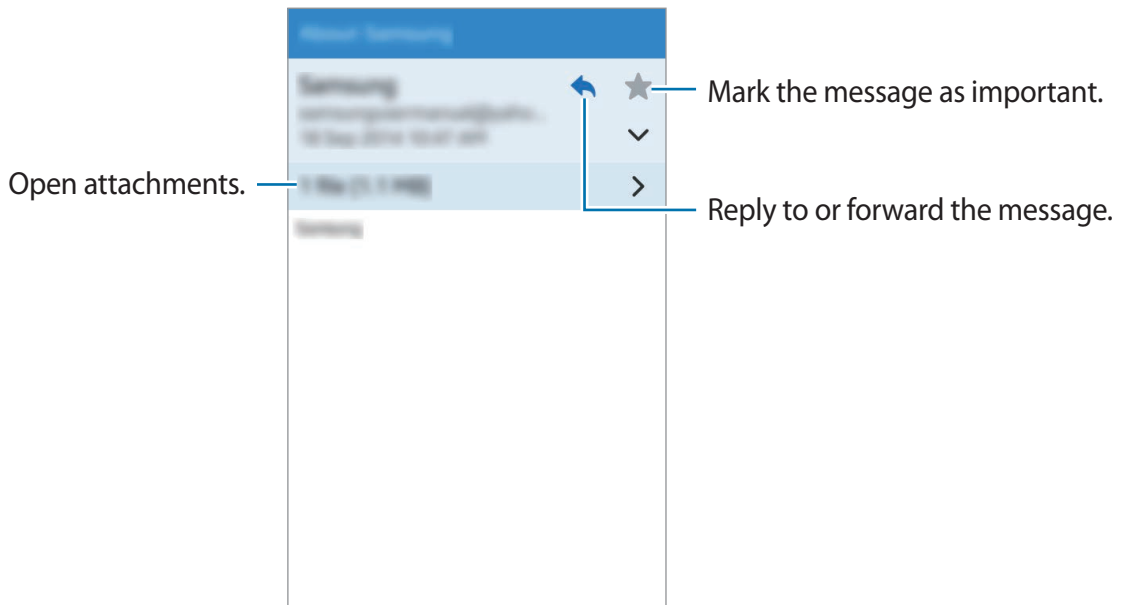
- **Add attachment:** Attach images, events, contacts, and others.
- **Add Cc/Bcc:** Add more recipients.
- **Save in Drafts:** Save the message for later delivery.
- **Send to myself:** Send the message to myself.

Reading emails

Tap **Email** on the Apps screen.

Tap **MAILBOX** → **Inbox** under an email account to use, and new messages are retrieved. To manually retrieve new messages, tap ☰ → **Refresh**.

Tap a message to read.



Adding contacts to the priority list

Set contacts that you communicate with frequently as priority contacts.



Select a message, tap ☰ → **Add to priority senders**.

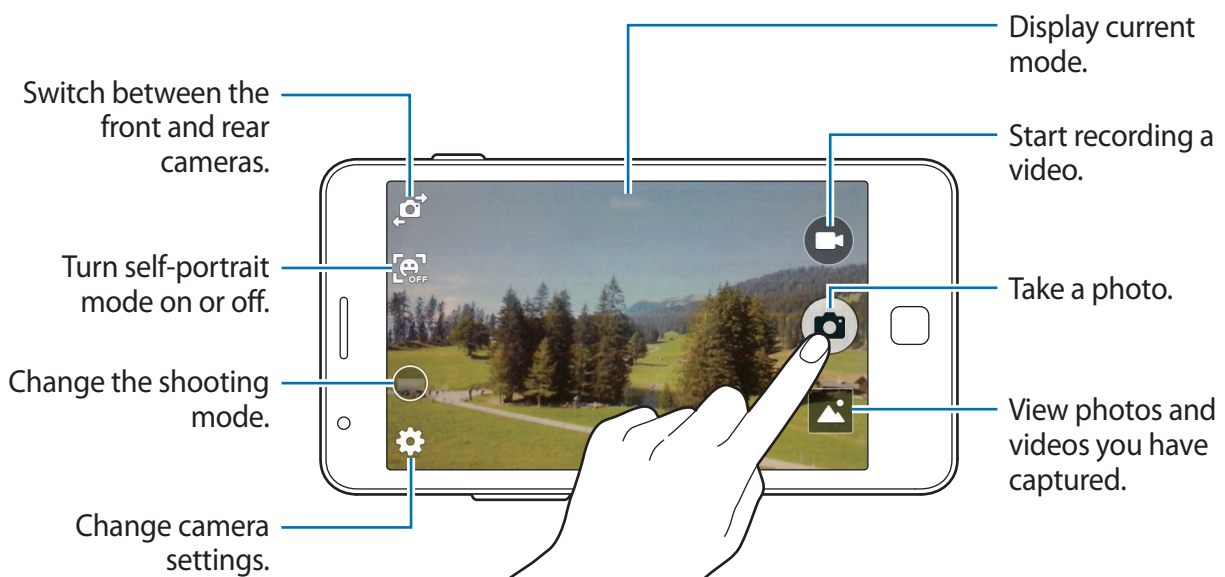
To remove contacts from the priority list, select the message sent by a priority sender, and then tap ☰ → **Remove from priority senders**.

Camera

Basic shooting

Taking photos or recording videos



- 1 Tap **Camera** on the Apps screen.
- 2 Tap  to take a photo or tap  to record a video.
 - Spread two fingers apart on the screen to zoom in, and pinch to zoom out.



- The camera automatically shuts off when unused.
- Make sure that the lens is clean. Otherwise, the device may not work properly in some modes that require high resolutions.

Launching Camera on the locked screen

To quickly take photos of special moments, launch **Camera** on the locked screen.

On the locked screen, drag  outside the large circle. If  is not shown, open the Apps screen, tap **Settings** → **Lock screen and security** → **Lock screen**, and then tap the **Camera shortcut** switch to activate it.



This feature may not be available depending on the region or service provider.

Camera etiquette

- Do not take photos or record videos of other people without their permission.
- Do not take photos or record videos where legally prohibited.
- Do not take photos or record videos in places where you may violate other people's privacy.

Shooting modes

Auto

Use this mode to allow the camera to evaluate the surroundings and determine the ideal mode for the photo.


On the Apps screen, tap **Camera** → **MODE** → **Auto**.

Selfie

Use this mode to take self-portraits using the front camera.

On the Apps screen, tap **Camera** →  → **MODE** → **Selfie**.

Panorama

Use this mode to take a photo composed of many photos strung together. The device identifies the photo with  in **Gallery**.

On the Apps screen, tap **Camera** → **MODE** → **Panorama**.




To get the best shot, follow these tips:

- Move the camera slowly in one direction.
- Keep the image within the frame on the camera's viewfinder.
- Avoid taking photos of indistinct backgrounds, such as an empty sky or a plain wall.


Dream shot

Use this mode to take photos using various photo templates.


On the Apps screen, tap **Camera** → **MODE** → **Dream shot** → . Select a template to use for taking a photo.





Self-portrait mode

Use this mode to allow the camera to detect and focus face automatically when you take a self-portrait.

- 1 On the Apps screen, tap **Camera** → .
- 2 Move the frame to the position where your face will appear and adjust the frame size.
- 3 Position the device so the camera is aimed at your face. When the face is detected, the device beeps. Then, the device automatically takes the photo after 2 seconds.

Camera settings

On the Apps screen, tap **Camera** → . Not all of the following options are available in both still camera and video camera modes.

- : Activate or deactivate the flash.
- : Use this for delayed-time shots.
- : Change the exposure value. This determines how much light the camera's sensor receives. For low-light situations, use a higher exposure.
- : Select a filter effect to use when taking photos or recording videos.

To access additional camera settings, open the preview screen and tap  → .

- **Picture size:** Select a resolution. Use higher resolution for higher quality. But it takes up more memory.
- **Video size:** Select a resolution. Use higher resolution for higher quality. But it takes up more memory.
- **White balance:** Select an appropriate white balance, so images have a true-to-life colour range. The settings are designed for specific lighting situations. These settings are similar to the heat range for white-balance exposure in professional cameras.
- **Save as flipped:** Invert the image to create a mirror-image of the original scene, when taking photos with the front camera.
- **The volume key:** Set the Volume button to take photos, record videos, or zoom in and out on the preview screen.
- **Tap to take pics:** Tap the image on the preview screen to take photos.
- **Storage location:** Select the memory location for storage.
- **Location tags:** Attach a GPS location tag to the photo.



- To improve GPS signals, avoid shooting in locations where the signal may be obstructed, such as between buildings or in low-lying areas, or in poor weather conditions.
- Your location may appear on your photos when you upload them to the Internet. To avoid this, deactivate the GPS tag setting.

- **Reset:** Reset the camera settings.



The available options vary depending on the mode used.

Gallery

Viewing photos or videos

Viewing content on the device

On the Apps screen, tap **Gallery** and select an image or a video.

Video files show the  icon on the preview thumbnail.


To add the image or video to the favourite list, tap the screen, and then tap .


Accessing additional options

On the Apps screen, tap **Gallery**.

Tap  and use the following options:

- **View as:** Change the view mode.
- **Create album:** Create a folder.
- **Copy to album:** Copy files or folders to another folder.
- **Delete:** Delete files or folders.
- **Share via:** Share files with others.
- **Slideshow:** Start a slideshow with the images in the current folder.
- **Sort by:** Sort files.

To select multiple files from the file list, tap , select an option, and then tick files. You can share or delete multiple files or access additional options.

Select an image or a video, tap , and then use the following options:

- **Slideshow:** Start a slideshow with the images in the current folder.
- **Edit:** Edit the image.
- **Delete:** Delete the image or video.
- **Rename:** Rename the file.
- **Share via:** Send the image or video to others.
- **Set as:** Set the image as wallpaper or a contact image.
- **Details:** View image and video details.







The available options may differ depending on the selected file.

Editing photos

Edit images by applying various effects.

While viewing an image, tap  → **Edit** and use the following functions:

-  : Crop the image.
-  : Rotate the image anticlockwise.
-  : Rotate the image clockwise.
-  : Apply effects to the image.

When you are finished editing the image, tap **DONE**.

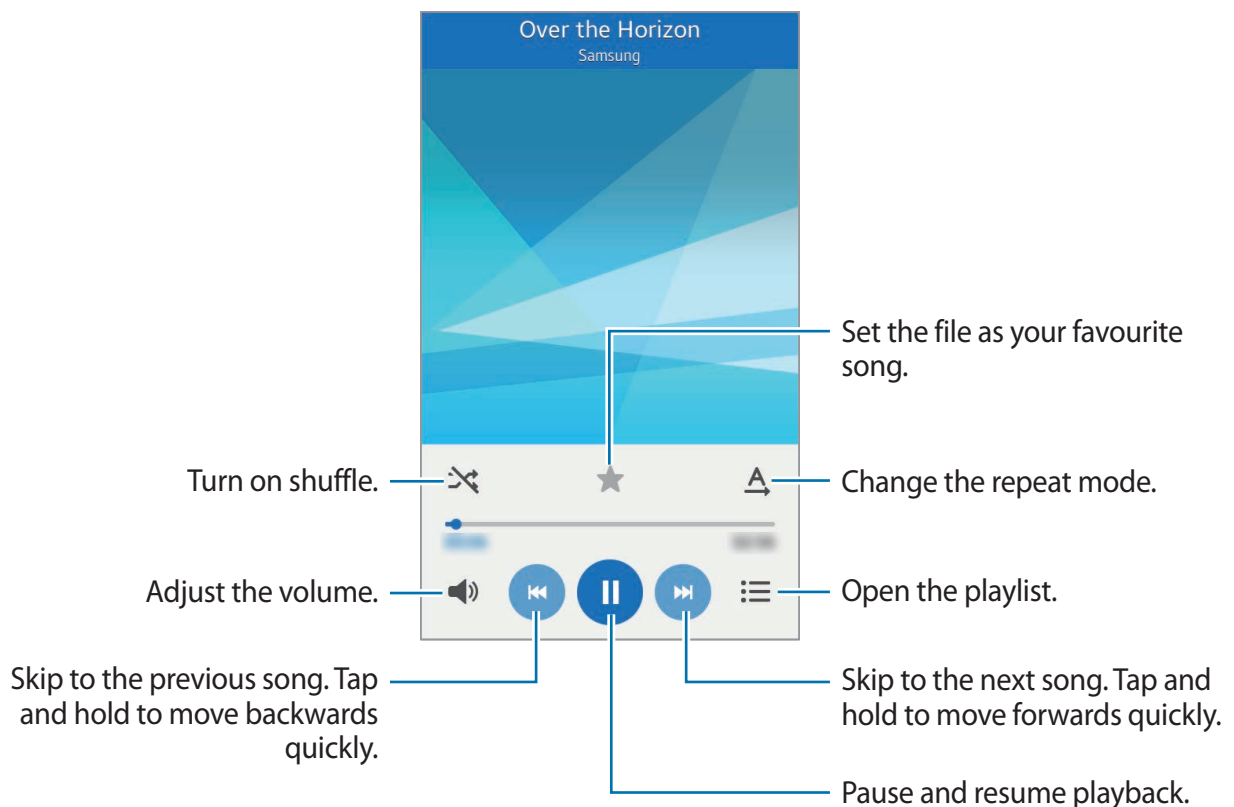
Multimedia

Music

Playing music

Tap **Music** on the Apps screen.

Select a music category, and then select a song to play.



Setting a song as ringtone or alarm tone

To use the currently-playing song as a ringtone or an alarm tone, tap → **Set as**, and then select an option.

Creating playlists

Make an own selection of songs.

Tap **Music** on the Apps screen.

Tap **Playlists** → ☰ → **Create**. Enter a title, tap **Create**, tick songs to include, and then tap **DONE**.

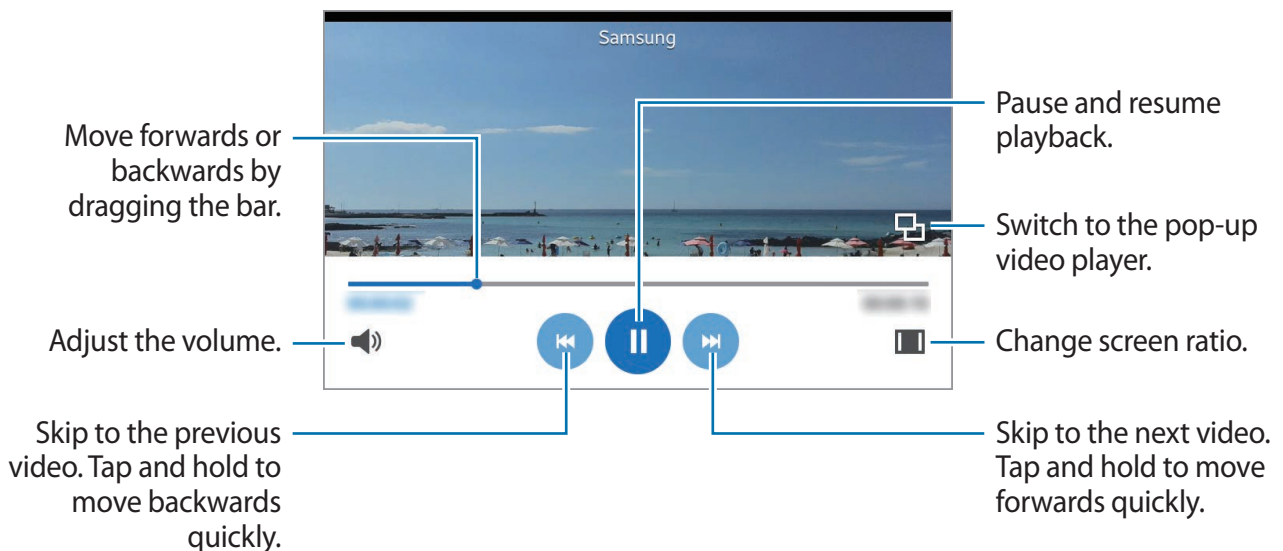
To add the currently-playing song to a playlist, tap ☰ → **Add to playlist** → **DONE** and select the playlist.

Video

Playing videos

Tap **Video** on the Apps screen.

Select a video to play.



Drag your finger up or down on the left side of the playback screen to adjust the volume, or drag your finger up or down on the right side of the playback screen to adjust the brightness. To rewind or fast-forward, drag your finger left or right on the playback screen.

Sharing or deleting videos

Tap **Video** on the Apps screen.

Tap  → **Share via**, tick videos, tap **DONE**, and then select a sharing method.

Tap  → **Delete**, tick videos, and then tap **DELETE**.

Security features


Help message

About help message

You can preset contacts to send a message to in an emergency. Send messages to your primary contacts by quickly pressing the Power button three times.

On the Apps screen, tap **Settings** → **Privacy and safety** → **Send help messages**.

Adding primary contacts

- 1 On the Apps screen, tap **Settings** → **Privacy and safety** → **Send help messages**, and then tap the **Send help messages** switch to activate it.
- 2 Tap **Edit primary contacts** →  → **Add**.
- 3 Tap **Create contact** and enter contact information or tap **Select from contacts** to add an existing contact as a primary contact.

Sending help messages

In an emergency situation, quickly press the Power button three times. The device sends messages to your primary contacts. The messages include your location information, an audio recording, and photos taken by the front and rear cameras.


Useful apps and features


FM Radio

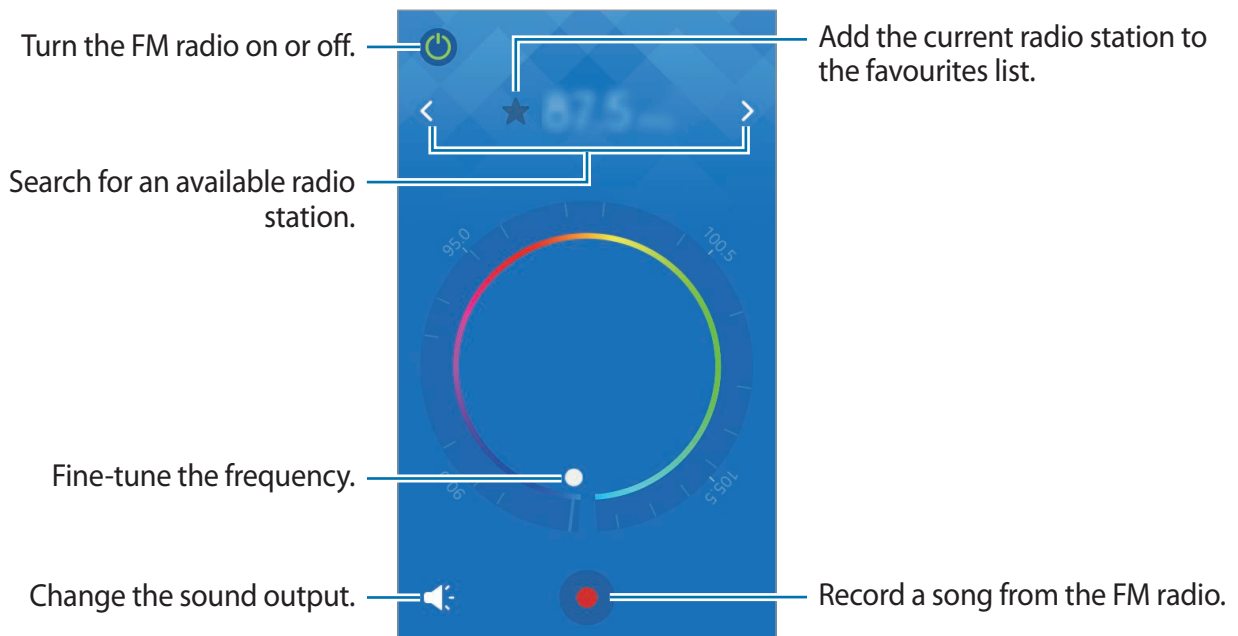
Listening to the FM radio

Tap **Joy Box** → **FM Radio** on the Apps screen.

Before you use this app, you must connect a headset, which serves as the radio antenna.


 The FM radio scans available radio stations and they are indicated by lines on the wheel when running for the first time.

Tap  to turn on the FM radio. Select the radio station you want by tapping the station's line on the wheel.



Scanning radio stations

Tap **Joy Box** → **FM Radio** on the Apps screen.

Tap  → **Scan**. The FM radio scans available radio stations and they are indicated by lines on the wheel.

Select the radio station you want by tapping the station's line on the wheel.

Adding stations to the favourites list

Tap **Joy Box** → **FM Radio** on the Apps screen.

Select a radio station, and then tap ★ to add the station to the favourites list.

Using the radio text feature

Tap **Joy Box** → **FM Radio** on the Apps screen.

Tap ☰ → **Settings**, and tap the **Radio text** switch to activate it. When a radio station supports transmitting radio information, such as time or station identification, the device displays the information on the screen.



Radio information is available only from radio stations that provide this information.

Clock

Alarm



On the Apps screen, tap **Clock** → **Alarm**.

Setting alarms

Set an alarm time and tap **Add**. To set an alarm with details, tap **Details**, set alarm options, and then tap **DONE**. To activate or deactivate alarms, tap ⓘ next to the alarm in the alarms list.

- **Snooze**: Set an interval and the number of times for the alarm to repeat after the preset time.

Stopping alarms

Drag  outside the large circle to stop an alarm. If you have previously enabled the snooze option, drag  outside the large circle to repeat the alarm after a specified length of time.

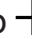
Deleting alarms

Tap  → **Delete**, tick alarms, and then tap **DELETE**.

World Clock

On the Apps screen, tap **Clock** → **World Clock**.

Creating clocks

Tap  and enter a city name or select a city from the cities list.

Deleting clocks

Tap  → **Delete**, tick clocks, and then tap **DELETE**.

Stopwatch

On the Apps screen, tap **Clock** → **Stopwatch**.

Tap **Start** to time an event. Tap **Lap** to record lap times.

Tap **Stop** to stop timing. To clear lap times, tap **Reset**.

Timer

On the Apps screen, tap **Clock** → **Timer**.

Set the duration, and then tap **Start**.

Drag  outside the large circle when the timer goes off.

Memo


Use this app to create memos.

Tap **Memo** on the Apps screen.

Composing memos


- 1 Tap **+** on the memos list.
- 2 Enter a memo.
- 3 Tap **DONE**.

Creating checklists

- 1 Tap  → **Create checklist**.
- 2 Enter tasks to do and tap **DONE**.


To mark a task as completed, select a checklist from the memos list and tick the completed task.

Searching for memos

On the memos list, tap  → **Search** and enter a keyword to search for memos that include the keyword.


Accessing additional options

You can access additional options on the memos list and while viewing memos.

On the memos list, tap  and use the following options:

- **Create checklist:** Create a checklist.
- **Delete:** Delete memos.
- **Search:** Search for memos.


While viewing a memo, tap  and use the following options:

- : Set the memo as your favourite memo.
- **Edit**: Edit the memo.
- **Delete**: Delete the memo.
- **Share via**: Share the memo with others.

Calculator

Use this app for simple or complex calculations.

Tap **Calculator** on the Apps screen.

Rotate the device to landscape orientation to display the scientific calculator. If **Auto rotate screen** is disabled, tap  → **Scientific calculator**.

To see the calculation history, tap  to hide the keypad.

To clear the history, tap  → **Clear history**.

Calendar

Starting Calendar

Use this app to manage events.

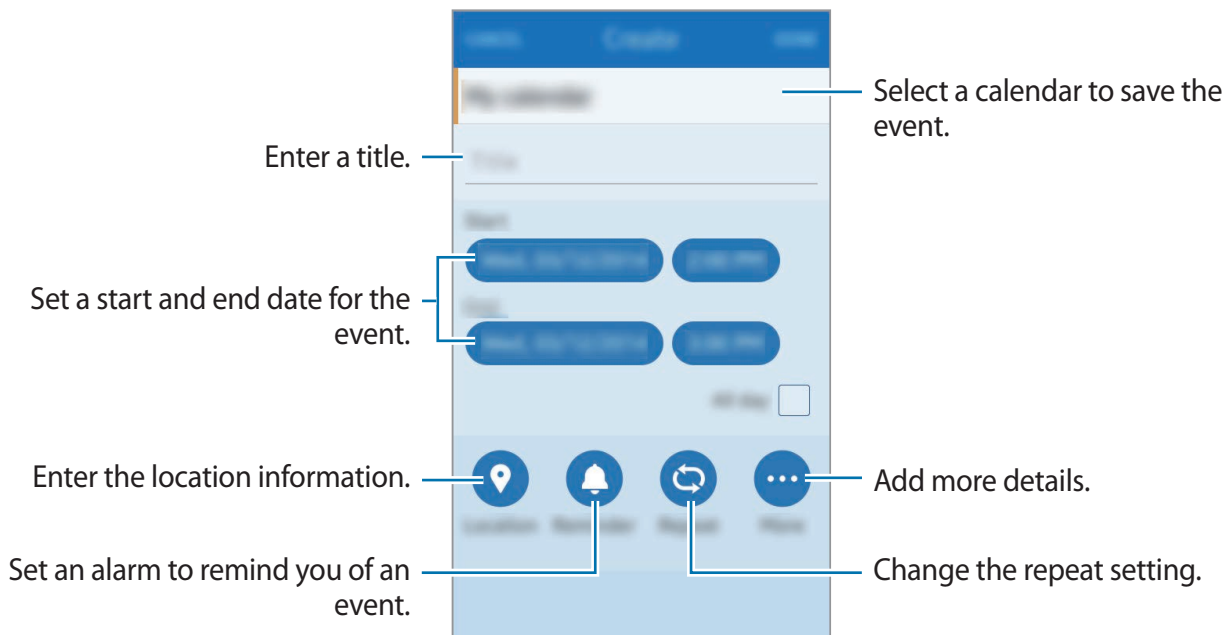
Tap **Calendar** on the Apps screen.

Tap  and use the following:

- **Go to today**: Go to today's date.
- **Select date**: Move to a specific date.
- **Search**: Search for events.
- **Calendars**: Select the calendars to display.
- **Sync**: Sync events with your accounts.
- **Settings**: Change settings for Calendar.

Creating events

- 1 Tap **Calendar** on the Apps screen.
- 2 Tap **+**.
- 3 Enter details.



- 4 Tap **DONE** to save the event.

Syncing events with your accounts

Tap **Calendar** on the Apps screen.


To sync events with your accounts, tap  → **Sync**.

To add accounts to sync with, tap  → **Calendars** →  → **Add account** →  → **Add**. Then, select an account to sync with and sign in.

To change an account's syncing option, open the Apps screen, tap **Settings** → **Accounts**, and then select an account service.


Deleting events

Tap **Calendar** on the Apps screen.

To delete an event, select an event and tap  → **Delete** → **Delete**.

Sharing events





Tap **Calendar** on the Apps screen.

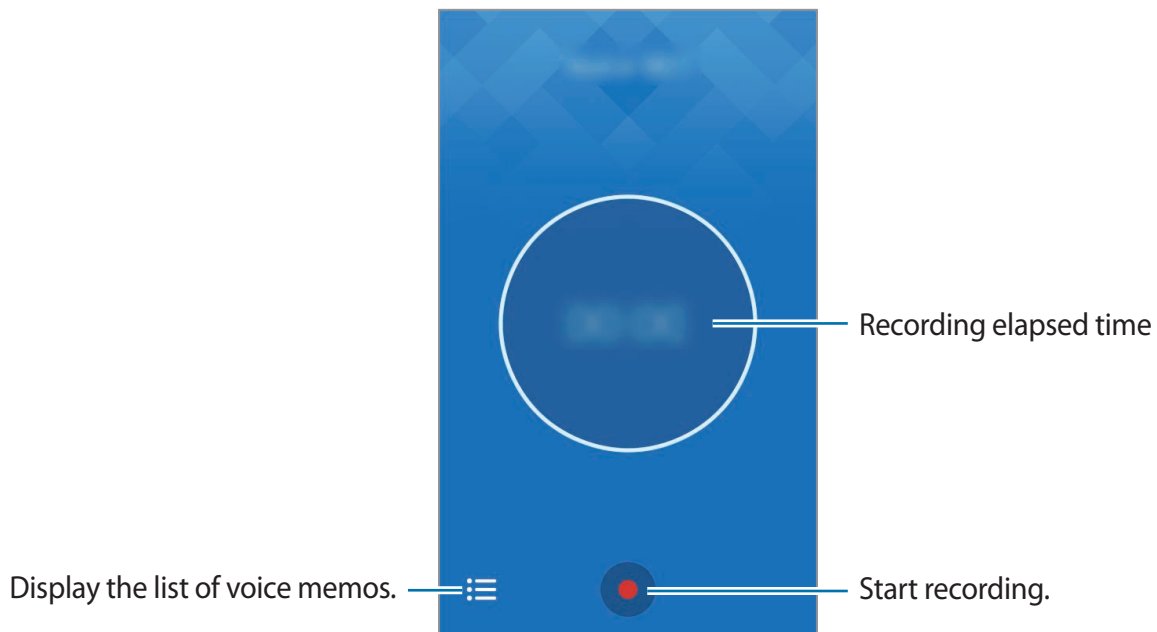
To share an event while viewing it, tap  → **Share as**, select a file format, and then select a sharing method.

Voice Recorder

Recording voice memos


Tap **Voice Recorder** on the Apps screen.






Tap  to start recording. Speak into the microphone. Tap  to pause recording. To cancel recording, tap . Tap  to finish recording.



Playing voice memos


Tap **Voice Recorder** on the Apps screen.

Tap  and select a voice memo to play.

-  : Adjust the volume by dragging the volume bar.
-  /  : Pause or resume playback.
-  /  : Skip to the previous or next voice memo.

Managing voice memos

On the Apps screen, tap **Voice Recorder** → .

Tap  and select one of the following:

- **Rename:** Rename a voice memo.
- **Delete:** Select voice memos to delete.
- **Share via:** Send memos to others.
- **Set as:** Set a voice memo as a ringtone or an alarm tone.
- **Settings:** Change the voice recorder settings.
- **Details:** View voice memo details.

Facebook

Use this application to stay connected with your social network on Facebook.

Tap **Facebook** on the Apps screen.



This application may not be available depending on the region or service provider.

Enter the Facebook account and password. View or share feeds.

Google apps

Google provides entertainment, social network, and business apps. You may require a Google account to access some apps. Refer to [Setting up accounts](#) for more information.

To view more app information, open the each app's main screen and tap **Help**.



Some apps may not be available or may be labelled differently depending on the region or service provider.

YouTube

Watch videos and share them with others.

Google Search

Search quickly for items on the Internet.

Connecting with other devices

Bluetooth

About Bluetooth

Bluetooth creates a direct wireless connection between two devices over short distances. Use Bluetooth to exchange data or media files with other devices.



- Samsung is not responsible for the loss, interception, or misuse of data sent or received via Bluetooth.
- Always ensure that you share and receive data with devices that are trusted and properly secured. If there are obstacles between the devices, the operating distance may be reduced.
- Some devices, especially those that are not tested or approved by the Bluetooth SIG, may be incompatible with your device.
- Do not use the Bluetooth feature for illegal purposes (for example, pirating copies of files or illegally tapping communications for commercial purposes).
Samsung is not responsible for the repercussion of illegal use of the Bluetooth feature.

Pairing with other Bluetooth devices

- 1 On the Apps screen, tap **Settings** → **Bluetooth**, tap the **Bluetooth** switch to activate it, and then tap **Scan**.

The detected devices are listed.

To set the device as visible to other devices, tap **Visibility timeout**, and then select an option.

- 2 Select a device to pair with.

If your device has paired with the device before, tap the device name without confirming the auto-generated passkey.

If the device you want to pair with is not in the list, request that the device turns on its visibility option.

- 3 Accept the Bluetooth authorisation request on both devices to confirm.


Sending and receiving data

Many apps support data transfer via Bluetooth. You can share data, such as contacts or media files, with other Bluetooth devices. The following actions are an example of sending an image to another device.

Sending an image

- 1 On the Apps screen, tap **Gallery**.

- 2 Select an image.

- 3 Tap  → **Share via** → **Bluetooth**, and then select a device to transfer the image to.


If the device you want to pair with is not in the list, request that the device turns on its visibility option. Or, set your device as visible to other devices.

- 4 Accept the Bluetooth authorisation request on the other device.

Receiving an image

When another device sends you an image, accept the Bluetooth authorisation request. The received image is saved in the **Gallery** → **Downloads** folder.

Unpairing Bluetooth devices




- 1 On the Apps screen, tap **Settings** → **Bluetooth**.
The device displays the paired devices in the list.
- 2 Tap  next to the device's name to unpair.
- 3 Tap **Unpair**.

Wi-Fi Direct

About Wi-Fi Direct

Wi-Fi Direct connects devices directly via a Wi-Fi network without requiring an access point.


Connecting to other devices

- 1 On the Apps screen, tap **Settings** → **Wi-Fi**, and then tap the **Wi-Fi** switch to activate it.
- 2 Tap  → **Wi-Fi Direct**.
The detected devices are listed.
- 3 Select a device to connect to.
To connect to multiple devices, tap  → **Multi connect**.
To change the device name, tap  → **Rename device**.
- 4 Accept the Wi-Fi Direct authorisation request on the other device to confirm.

Sending and receiving data

You can share data, such as contacts or media files, with other devices. The following actions are an example of sending an image to another device.


Sending an image

- 1 On the Apps screen, tap **Gallery**.
- 2 Select an image.
- 3 Tap  → **Share via** → **Wi-Fi Direct**, select a device to transfer the image to.
- 4 Accept the Wi-Fi Direct authorisation request on the other device.

Receiving an image

Open the Wi-Fi Direct screen. When another device sends you an image, accept the Wi-Fi Direct authorisation request. The received image is saved in the **Gallery** → **Downloads** folder.

Ending the device connection

- 1 On the Apps screen, tap **Settings** → **Wi-Fi**.
- 2 Tap  → **Wi-Fi Direct**.
The device displays the connected devices in the list.
- 3 Tap **Disconnect** → **OK** to disconnect the devices.

Device & data manager

Upgrading the device

The device can be upgraded to the latest software.

Upgrading over the air

The device can be directly upgraded to the latest software by the firmware over-the-air (FOTA) service.

On the Apps screen, tap **Settings** → **About device** → **Software update** → **Update**.

Upgrading with Samsung Kies

Download the latest version of Samsung Kies from the Samsung website. Launch Samsung Kies and connect the device to the computer. Samsung Kies automatically recognises the device and shows available updates in a dialogue box, if any. Click the Update button in the dialogue box to start upgrading. Refer to the Samsung Kies help for more information about how to upgrade.



- Do not turn off the computer or disconnect the USB cable while the device is upgrading.
- While upgrading the device, do not connect other media devices to the computer. Doing so may interfere with the update process.

Transferring files between the device and a computer

Move audio, video, image, or other types of files from the device to the computer, or vice versa.



Do not disconnect the USB cable from the device when you are transferring files. Doing so may cause data loss or device damage.



- Do not disconnect the device from the computer when you play files saved in the device on the connected computer. After you finish playing the file, disconnect the device from the computer.
- The devices may not connect properly if they are connected via a USB hub. Directly connect the device to the computer's USB port.

Connecting as a media device

- 1 Connect the device to the computer using the USB cable.
- 2 Transfer files between your device and the computer.

Connecting with Samsung Kies

Samsung Kies is a computer app that manages media contents and personal information with Samsung devices. Download the latest Samsung Kies from the Samsung website.

- 1 Connect the device to the computer using the USB cable.
Samsung Kies launches on the computer automatically. If Samsung Kies does not launch, double-click the Samsung Kies icon on the computer.
- 2 Transfer files between your device and the computer.
Refer to the Samsung Kies help for more information.

Backing up and restoring data

Keep your personal information, app data, and settings safe on your device. You can back up your sensitive information to a backup account and access it later.

Using a Samsung account

On the Apps screen, tap **Settings** → **Accounts** → **Samsung account**, and then sign in to your Samsung account. Tap the Samsung account → **Back up**. Tap the switch next to items to back up, and then tap **Back up** → **OK**.



To restore data, open the Apps screen, tap **Settings** → **Accounts** → the Samsung account → **Restore**. Tap the switch next to items, and then tap **Restore**.

Performing a data reset

Delete all settings and data on the device. Before performing a factory data reset, ensure you back up all important data stored on the device. Refer to [Backing up and restoring data](#) for more information.

On the Apps screen, tap **Settings** → **Backup and reset** → **Factory data reset** → **Reset** → **OK**. The device automatically restarts.

Settings

About Settings

Use this app to configure the device and add accounts.

Tap **Settings** on the Apps screen.

Connections

Wi-Fi

Activate the Wi-Fi feature to connect to a Wi-Fi network and access the Internet or other network devices.

On the Settings screen, tap **Wi-Fi**, and then tap the **Wi-Fi** switch to activate it.

To use options, tap .

- **Find hidden network:** Search for a hidden Wi-Fi network not appearing in the available networks list.
- **Advanced:** Customise Wi-Fi settings.
- **Wi-Fi Direct:** Activate Wi-Fi Direct and connect devices directly via Wi-Fi to share files.

Setting Wi-Fi sleep policy

Tap  → **Advanced** → **Keep Wi-Fi on during sleep**.



When the screen is turned off, the device automatically turns off Wi-Fi connections. When this happens, the device automatically accesses mobile networks if it is set to use them. This may incur data transfer fees. To avoid additional charges, set this option to **Always**.

Setting Network notification

The device can detect open Wi-Fi networks and display an icon on the status bar to notify when available.

Tap  → **Advanced** and tap the **Network notification** switch to activate this feature.

Bluetooth

Activate the Bluetooth feature to exchange information over short distances.

On the Settings screen, tap **Bluetooth**, and then tap the **Bluetooth** switch to activate it.

You can set the device to be visible to other devices by tapping **Visibility timeout**.

To use more options, tap .

- **Rename device:** Change the device name.

Flight mode

This disables all wireless functions on your device. You can use only non-network services.

On the Settings screen, tap **Flight mode**.

Tethering

Use the device as a mobile hotspot to share the device's mobile data connection with other devices. Refer to [Tethering](#) for more information.

On the Settings screen, tap **Tethering**.

- **Wi-Fi tethering:** Use the mobile hotspot to share the device's mobile data connection with computers or other devices through the Wi-Fi network. You can use this feature when the network connection is not available.
- **Bluetooth tethering:** Use Bluetooth tethering to share the device's mobile data connection with computers or other devices via Bluetooth.
- **USB tethering:** Use USB tethering to share the device's mobile data connection with a computer via USB. When connected to a computer, the device is used as a wireless modem for the computer.

Location

Change settings for location information permissions.

On the Settings screen, tap **Location**, and then tap the **Use current location** switch to activate it.

- **GPS:** Set the device to use the GPS satellite for finding the current location.
- **Wireless networks:** Set the device to allow location data collection or to determine the location of your lost or stolen device via Wi-Fi or mobile network.

Data usage

Keep track of your data usage amount and customise the settings for the limitation.

On the Settings screen, tap **Data usage**.

- **Data usage cycle:** Select a usage period to view your data usage.
- **Start date:** Set a monthly reset date to monitor data usage between periods.
- **Limit data usage:** Set a limit for mobile data usage.
- **Data usage limit:** View or edit your data usage limit.

SIM card manager

Activate your SIM or USIM cards and customise the SIM card settings.

On the Settings screen, tap **SIM card manager**.

- **Calls and messages:** Select a SIM or USIM card for calls and messaging services.
- **Mobile data:** Select a SIM or USIM card for mobile data.
- **Receive incoming calls:** Set whether or not to allow incoming calls from the GPRS network while using data services.
- **Smart dual SIM:** Set the device to allow incoming calls from the other SIM or USIM card during a call.



When this feature is enabled, you may incur additional charges for call forwarding depending on the region or service provider.

Mobile network

Customise settings to control network usage.

On the Settings screen, tap **Mobile network**.

- **Mobile data:** Set the device to use data connections on any mobile network.
- **Data roaming:** Set the device to use data connections when you are roaming.
- **Service providers:** Search for available networks and manually register a network.
- **SIM1 network mode / SIM2 network mode:** Select a network type.
- **Mobile network connections:** Set networks for data and multimedia messaging services.

Device

Sound

Change settings for various sounds on the device.

On the Settings screen, tap **Sound**.

- **Ringtone:** Select a ringtone for incoming calls or adjust the volume level for call ringtones.
- **Notification:** Select a ringtone for events, such as incoming messages, or adjust the volume level for notifications.
- **Media:** Adjust the volume level for music and videos.
- **System:** Adjust the volume level for system sounds.
- **Vibrate when ringing:** Set the device to vibrate and play a ringtone for incoming calls.
- **Feedback:**
 - **Touch sound:** Set the device to sound when you select an app or option on the touch screen.
 - **Dialing keypad tone:** Set the device to sound when you tap the buttons on the keypad.

- **Screen lock sound:** Set the device to sound when you lock or unlock the touch screen.
- **Keyboard sound:** Set the device to sound when a key is touched.

Display

Change the display settings.

On the Settings screen, tap **Display**.

- **Brightness:** Set the brightness of the display.
- **Outdoor mode:** Activate outdoor mode to make the display easier to see in bright conditions.
- **Font:**
 - **Size:** Change the font size.
 - **Type:** Change the font type for display text.
- **Auto rotate screen:** Set the content to rotate automatically when the device is turned.
- **Screen timeout:** Set the length of time the device waits before turning off the display's backlight.
- **Show battery percentage:** Set the device to display the remaining battery life.

Application manager

View and manage the apps on your device.

On the Settings screen, tap **Application manager**.

Personalisation

Themes and wallpapers

Change the wallpaper settings and the theme of the display or icons.

On the Settings screen, tap **Themes and wallpapers**.

- **Themes:**
 - **Colour theme:** Change the colour theme of the display.
 - **Icon theme:** Change the theme for app icons.
- **Wallpapers:** Scroll left or right and select a screen to change wallpaper.
 - **Default wallpapers:** Select a background image from the default wallpapers.
 - **Gallery:** Select a background image from **Gallery**. You can set multiple images as the locked screen's wallpaper. The locked screen will automatically switch between the images.
 - **My interests:** Select categories that interest you. The device will display high quality images on the locked screen based on your interests.



You may incur additional charges when using this feature.

Lock screen and security

Change settings for securing the device and the SIM or USIM card.

On the Settings screen, tap **Lock screen and security**.

- **Lock screen:**
 - **Screen lock type:** Change the screen lock method. The following options may vary depending on the screen lock feature selected.
 - **Special day wallpapers:** Set the device to change the locked screen automatically depending on special days such as national holidays.
 - **Camera shortcut:** Set the device to show the camera shortcut on the locked screen.



This feature may not be available depending on the region or service provider.

- **Weather:** Set the device to display weather on the locked screen.
- **Dual clock:** Set the device to show the dual clock when you are roaming.
- **SIM card settings:**
 - **PIN lock:** Activate or deactivate the PIN lock feature to require the PIN before using the device.
 - **Change PIN:** Change the PIN used to access SIM or USIM data.
- **Find my mobile:** Access the Find my mobile website (findmymobile.samsung.com). You can track and control your lost or stolen device from the Find my mobile website.
- **Other security settings:**
 - **Antivirus software:** Protect the device from harmful viruses and malware.
 - **Security update:** Set the device to check and download security updates.
 - **Send security reports:** Set the device to automatically send the updated security reports to Samsung.

Privacy and safety

Private mode

Set the device to prevent others from accessing your personal content by activating private mode.

On the Settings screen, tap **Privacy and safety** → **Private mode**, and then tap the **Private mode** switch to activate it.

- **Unlock method:** Set or change the unlock method to activate private mode.

Privacy

Allow the device to use your private information, such as location or account information, for apps.

On the Settings screen, tap **Privacy and safety** → **Privacy**.

Send help messages

Set the device to send a help message to preset contacts in an emergency situation. Press the Power button three times to send the message. Refer to [Help message](#) for more information.

On the Settings screen, tap **Privacy and safety** → **Send help messages** and tap the **Send help messages** switch to activate it.

- **Edit primary contacts:** Select or edit the recipients for help messages.
- **Send pictures:** Set the device to send photos taken by the front and rear cameras with the help message.



This feature may not be available depending on the region or service provider.

- **Send sound recording:** Set the device to record sound and send it along with the message to the recipients.

Accounts

Add email or SNS accounts.

On the Settings screen, tap **Accounts**.

Backup and reset

Change the settings for managing settings and data.

On the Settings screen, tap **Backup and reset**.

- **Back up:** Set the device to back up settings and app data with your Samsung account.
- **Restore:** Restore settings and app data using your Samsung account.
- **Storage usage:** View your Samsung account server's storage information.
- **Factory data reset:** Reset settings to the factory default values and delete all data.

System

Language and input

Change the settings for text input. Some options may not be available depending on the selected language.

On the Settings screen, tap **Language and input**.

Display language

Select a display language for all menus and apps.

Regional formatting

Select a country or region for the display format. This setting affects the time and date format or units.

Default keyboard

Select a default keyboard type for text input.

Keyboard settings



The available options may vary depending on the region or service provider.

- **English (UK):** Select a default keyboard layout.
- **Select input languages:** Select languages for text input.
- **Predictive text:** Activate predictive text mode to predict words and show word suggestions.
- **Auto capitalise:** Set the device to automatically capitalise the first character after a final punctuation mark, such as a full stop, question mark, or exclamation mark.
- **Auto punctuate:** Set the device to insert a full stop when you double-tap the space bar.
- **Sound:** Set the device to sound when a key is touched.
- **Character preview:** Set the device to display a large image of each character tapped.
- **Reset:** Reset Samsung keyboard settings.

Power and storage

Battery

View the amount of battery power consumed by your device. When the battery power is low, you can save battery power by using ultra power saving mode. Refer to [Ultra power saving mode](#) for more information.

On the Settings screen, tap **Power and storage** → an image under **Battery** → **Ultra power saving mode**, and then tap the **Ultra power saving mode** switch to activate it.

- **Ultra power saving mode:** Extend standby time and reduce battery consumption by displaying a simpler layout and allowing limited access to an app.



The estimated maximum standby time shows the time remaining before the battery power runs out if the device is not used. Standby time may vary depending on your device settings and operating conditions.

Storage

View memory information for your device and memory card, or format a memory card.

On the Settings screen, tap **Power and storage** → an image under **Storage**.



Formatting a memory card permanently deletes all data from it.



The actual available capacity of the internal memory is less than the specified capacity because the operating system and default apps occupy part of the memory. The available capacity may change when you upgrade the device.

Date and time

Access and alter the following settings to control how the device displays the time and date.

On the Settings screen, tap **Date and time**.

- **Auto update:** Automatically update the time and date when moving across time zones.
- **Date and time:** Set the current date manually.
- **Time zone:** Set the home time zone.
- **24-hour clock:** Display time in 24-hour format.

About device

Access device information, edit the device name, or update device software.

On the Settings screen, tap **About device**.

Troubleshooting

Before contacting a Samsung Service Centre, please attempt the following solutions. Some situations may not apply to your device.

When you turn on your device or while you are using the device, it prompts you to enter one of the following codes:

- **Password:** When the device lock feature is enabled, you must enter the password you set for the device.
- **PIN:** When using the device for the first time or when the PIN requirement is enabled, you must enter the PIN supplied with the SIM or USIM card. You can disable this feature by using the Lock SIM card menu.
- **PUK:** Your SIM or USIM card is blocked, usually as a result of entering your PIN incorrectly several times. You must enter the PUK supplied by your service provider.
- **PIN2:** When you access a menu requiring the PIN2, you must enter the PIN2 supplied with the SIM or USIM card. For more information, contact your service provider.

Your device displays network or service error messages

- When you are in areas with weak signals or poor reception, you may lose reception. Move to another area and try again. While moving, error messages may appear repeatedly.
- You cannot access some options without a subscription. For more information, contact your service provider.

Your device does not turn on

- When the battery is completely discharged, your device will not turn on. Fully charge the battery before turning on the device.
- If the battery is user-replaceable, the battery may not be inserted properly. Insert the battery again.
- If the battery is user-replaceable, wipe both gold-coloured contacts and insert the battery again.

The touch screen responds slowly or improperly

- If you attach a protective cover or optional accessories to the touch screen, the touch screen may not function properly.
- If you are wearing gloves, if your hands are not clean while touching the touch screen, or if you tap the screen with sharp objects or your fingertips, the touch screen may malfunction.
- The touch screen may malfunction in humid conditions or when exposed to water.
- Restart your device to clear any temporary software bugs.
- Ensure that your device software is upgraded to the latest version.
- If the touch screen is scratched or damaged, visit a Samsung Service Centre.

Your device freezes or has fatal errors

If your device freezes or hangs, you may need to close apps or turn off the device and turn it on again. If your device is frozen and unresponsive, press and hold the Power button and the Volume button down simultaneously for more than 7 seconds to restart it.

If this does not solve the problem, perform a factory data reset. On the Apps screen, tap **Settings** → **Backup and reset** → **Factory data reset** → **Reset** → **OK**. Before performing the factory data reset, remember to make backup copies of all important data stored in the device.

If the problem is still not resolved, contact a Samsung Service Centre.

Calls are not connected

- Ensure that you have accessed the right cellular network.
- Ensure that you have not set call barring for the phone number you are dialling.
- Ensure that you have not set call barring for the incoming phone number.

Others cannot hear you speaking on a call

- Ensure that you are not covering the built-in microphone.
- Ensure that the microphone is close to your mouth.
- If using a headset, ensure that it is properly connected.

Sound echoes during a call

Adjust the volume by pressing the Volume button or move to another area.

A cellular network or the Internet is often disconnected or audio quality is poor

- Ensure that you are not blocking the device's internal antenna.
- When you are in areas with weak signals or poor reception, you may lose reception. You may have connectivity problems due to issues with the service provider's base station. Move to another area and try again.
- When using the device while moving, wireless network services may be disabled due to issues with the service provider's network.

The battery icon is empty

Your battery is low. Charge the battery or replace it if the battery is user-replaceable.

The battery does not charge properly (For Samsung-approved chargers)

- Ensure that the charger is connected properly.
- If the battery terminals are dirty, the battery may not charge properly or the device may turn off. Wipe both gold-coloured contacts and try charging the battery again.
- The batteries in some devices are not user-replaceable. To have the battery replaced, visit a Samsung Service Centre.

The battery depletes faster than when first purchased

- When you expose the battery to very cold or very hot temperatures, the useful charge may be reduced.
- Battery consumption increases when you use messaging features or some apps, such as games or the Internet.
- The battery is consumable and the useful charge will get shorter over time.

Your device is hot to the touch

When you use apps that require more power or use apps on your device for an extended period of time, your device may feel hot to the touch. This is normal and should not affect your device's lifespan or performance.

Error messages appear when launching the camera

Your device must have sufficient available memory and battery power to operate the camera app. If you receive error messages when launching the camera, try the following:

- Charge the battery or replace it if the battery is user-replaceable.
- Free some memory by transferring files to a computer or deleting files from your device.
- Restart the device. If you are still having trouble with the camera app after trying these tips, contact a Samsung Service Centre.

Photo quality is poorer than the preview

- The quality of your photos may vary, depending on the surroundings and the photography techniques you use.
- If you take photos in dark areas, at night, or indoors, image noise may occur or images may be out of focus.

Error messages appear when opening multimedia files

If you receive error messages or multimedia files do not play when you open them on your device, try the following:

- Free some memory by transferring files to a computer or deleting files from your device.
- Ensure that the music file is not Digital Rights Management (DRM)-protected. If the file is DRM-protected, ensure that you have the appropriate licence or key to play the file.
- Ensure that the file formats are supported by the device. If a file format is not supported, such as DivX or AC3, install an app that supports it. To confirm the file formats that your device supports, visit www.samsung.com.

- Your device supports photos and videos captured with the device. Photos and videos captured by other devices may not work properly.
- Your device supports multimedia files that are authorised by your network service provider or providers of additional services. Some content circulated on the Internet, such as ringtones, videos, or wallpapers, may not work properly.

Another Bluetooth device is not located

- Ensure that the Bluetooth wireless feature is activated on your device.
- Ensure that the Bluetooth wireless feature is activated on the device you wish to connect to.
- Ensure that your device and the other Bluetooth device are within the maximum Bluetooth range (10 m).

If the tips above do not solve the problem, contact a Samsung Service Centre.

A connection is not established when you connect the device to a computer

- Ensure that the USB cable you are using is compatible with your device.
- Ensure that you have the proper driver installed and updated on your computer.
- If you are a Windows XP user, ensure that you have Windows XP Service Pack 3 or higher installed on your computer.
- Ensure that you have Samsung Kies or Windows Media Player 10 or higher installed on your computer.

Your device cannot find your current location

GPS signals may be obstructed in some locations, such as indoors. Set the device to use Wi-Fi or a mobile network to find your current location in these situations.

Data stored in the device has been lost

Always make backup copies of all important data stored in the device. Otherwise, you cannot restore data if it is corrupted or lost. Samsung is not responsible for the loss of data stored in the device.

A small gap appears around the outside of the device case

- This gap is a necessary manufacturing feature and some minor rocking or vibration of parts may occur.
- Over time, friction between parts may cause this gap to expand slightly.

Copyright

Copyright © 2014 Samsung Electronics

This manual is protected under international copyright laws.

No part of this manual may be reproduced, distributed, translated, or transmitted in any form or by any means, electronic or mechanical, including photocopying, recording, or storing in any information storage and retrieval system, without the prior written permission of Samsung Electronics.

Trademarks

- SAMSUNG and the SAMSUNG logo are registered trademarks of Samsung Electronics.
- Bluetooth® is a registered trademark of Bluetooth SIG, Inc. worldwide.
- Wi-Fi®, Wi-Fi Protected Setup™, Wi-Fi Direct™, Wi-Fi CERTIFIED™, and the Wi-Fi logo are registered trademarks of the Wi-Fi Alliance.
- All other trademarks and copyrights are the property of their respective owners.