

iRiver

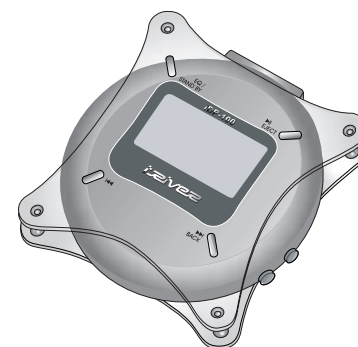
Model : iDP-100

 **Limited**
http://www.iRiver.com

<http://www.iRiver.com>

iRiver Data
PLAY

iDP-100



Firmware Upgradable

Thank you for purchasing the product.
Please read this manual carefully before use.

iRiver

FCC Certification

THIS DEVICE COMPLIES WITH PART 15 OF THE FCC RULES. OPERATION IS SUBJECT TO THE FOLLOWING TWO CONDITIONS: (1) THIS DEVICES MAY NOT CAUSE HARMFUL INTERFERENCE, AND (2) THIS DEVICE MUST ACCEPT ANY INTERFERENCE, RECEIVED, INCLUDING INTERFERENCE THAT MAY CAUSE UNDESIRED OPERATION.

Note : This equipment has been tested and found to comply with the limits for a Class B digital device, pursuant to part 15 of the FCC Rules. These limits are designed to provide reasonable protection against harmful interference in a residential installation. This equipment generates, uses and can radiate radio frequency energy and, if not installed and used in accordance with the instructions, may cause harmful interference to radio communications. However, there is no guarantee that interference will not occur in a particular installation. If this equipment does cause harmful interference to radio or television reception, which can be determined by turning the equipment off and on, the user is encouraged to try to correct the interference by one or more of the following measures :

- Reorient or relocate the receiving antenna.
- Increase the separation between the equipment and receiver.
- Connect the equipment into an outlet on a circuit different from that to which the receiver is connected.
- Consult the dealer or an experienced radio/TV technician for help.

Contents

1. Contents.....	2
2. Why DataPlay ?.....	3
3. About the iDP-100?.....	4/5
4. Controls.....	6/7
5. Installing Software on PC.....	8
6. Connecting the unit the to PC.....	9
7. Saving the general files of PC to the Player.....	10
8. Converting MP3 files to CKMP3 files.....	11
9. Listening to the music.....	12/14
10. Mode.....	15/16
11. Setting the Mode.....	17
12. Navigation(Search).....	18
13. Menu(Function control).....	19
14. Function Control.....	20/27
15. Power Supply(Rechargeable Battery).....	28/29
16. Trouble Shooting.....	30/32
17. Precautions.....	33/34
18. Notes.....	35
19. Accessories.....	36
20. Specification.....	37

Why DataPlay ?



Why DataPlay?

• **DataPlay Digital Media Solutions are designed to enable the next generation of digital consumer electronics products while meeting the growing demands of consumers, content providers, consumer electronics manufacturers and retailers.**

DataPlay digital media is :

Universal

- records and plays back virtually any type of digital content on any DataPlay-enabled device such as digital music players, digital cameras, digital electronic games, PDAs, wireless devices.

Portable

- the 32 mm media is not much larger than a quarter and the micro-optical engine is about the size of a matchbox so it easily integrates into portable devices.

Affordable

- around \$10 retail for 500MB blank media. Prices for pre-recorded content such as music, e-books and games will be comparable to prices for the same content currently distributed on CD.

Web-enabled

- DataPlay ContentKey provides content providers and retailers with new opportunities for extending sales with instant online sales and activation of additional pre-recorded content. Consumers don't need to wait for long downloads.

High Capacity

- 500MB or 250MB media available

Archivable

- permanent recording on media rated at 100 year life

Low power

- designed to enable the next generation of powerful portable digital devices, the media requires very little power to record and playback data saving battery life.



About the iDP-100?

● Characteristics

- **Portable Music Player with Multi Codec(MP3, AAC, QDX, etc)** (Available MPEG 1/2/2.5 Layer 3,8Kbps ~320Kbps,ID3V1Tag,ID3 V2 2.0,ID3 V2 3.0),AAC,QDX formats)
- **Can use the portable storage device with 500M(both sides) using USB cable.**
- **FirmWare Upgradability :** Can easily add or upgrade the function of the player through USB port.
- **Multi Function Graphic LCD with the capability to support 35 major language, including :** English, French, Spanish, etc
- **Graphic User Interface**
- **ContentKey Support**
- **The rechargeable batteries include the following features :**
protection from over charging.
Simultaneously capable of playback and recharge
Can play approximately 12 hours after approximately 2.5 hours of charging.
- **Dimension : 76.5(W)X 83(L)X 34.5(H)mm**

About the iDP-100?

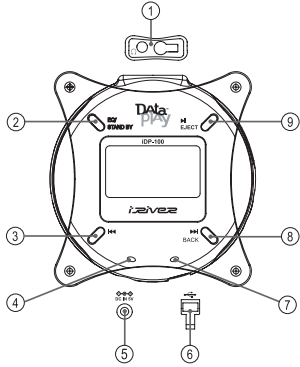
● When playing a media

- **Purchasing Prerecorded DataPlay Media**
Purchase DataPlay media recorded in CKMP3, CKAAC, CKQDX format. You can enjoy prerecorded music.
- **How to buy ContentKey :**
If you have prerecorded disc, you can easily buy the ContentKey by connecting to the internet and clicking on "Purchase" in the FuturePlayer program. Then can enjoy the album.
- **How to record and play music with blank media**
You can make your favorite album by converting from the MP3 format to CKMP3
You can not play any files except CKMP3. CKAAC and CKQDX format.
Make your album using the FuturePlayer program.
- **How to use as the portable storage device.**

You can use the player as a portable storage device with 500M(both sides), where you can easily find files or directories recorded in the media.
- **How to upgrade Firmware**
You can upgrade the Operating System of the player by downloading from the internet.(Log on to www.iriver.com or www.iriveramerica.com)

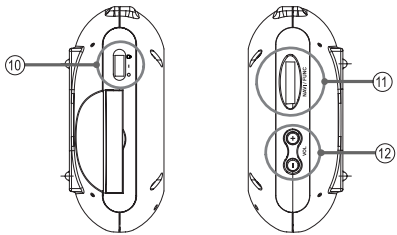
CONTROLS

Front Panel



- ① Earphone : To connect the remote controller(optional) or earphones.
- ② EQ : To select the equalizer mode.
Press more than about 2 sec : To set stand by mode.
- ③ ◀◀ : To search in reverse for a particular point on the media.
Press more than about 2 sec : To search for a particular point on the media reverse.
- ④ Charge indicator
- ⑤ DC IN 5V : To connect the external power adapter.
- ⑥ To connect USB cable.
- ⑦ USB connection indicator
- ⑧ ▶▶ : To search forward for a particular point on the media.
Press more than about 2 sec : To search for a particular point on the media forward.
BACK : move backward in NAVI/FUNCTION menu
- ⑨ ▶▶/EJECT : To stop playback or pause.
Press more than about 2 sec : To eject the media.

Side Panel

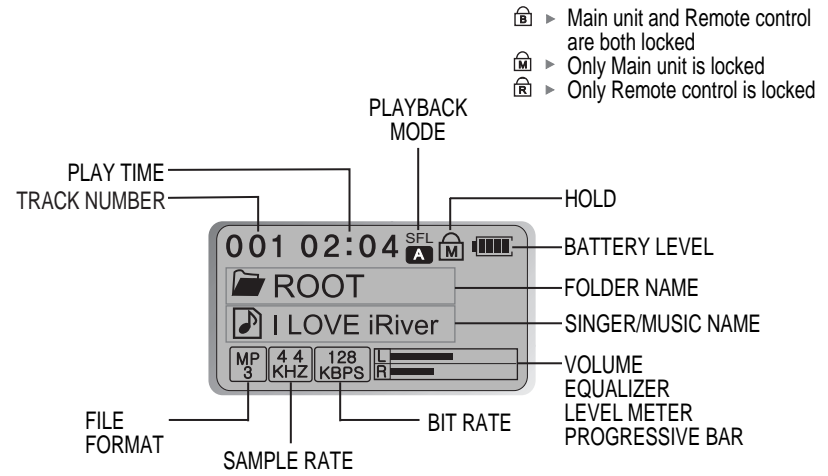


- ⑩ Power ON/OFF switch
 - LOCK
 - To power ON.
 - To power OFF.
- ⑪ NAVI/FUNC : To select the Navigation or Function Setting.
- ⑫ VOL : To set the volume level.

Note : If you are not going to use for a long time, turn off the power.(position)

CONTROLS

LCD



- ▶ Main unit and Remote control are both locked
- ▶ Only Main unit is locked
- ▶ Only Remote control is locked

INSTALLING SOFTWARE ON PC

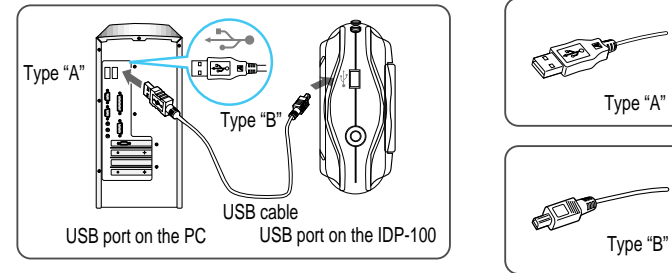
- **System Requirements**

Pentium 133MHz or faster	CD-ROM drive
USB port	20MB free hard disc space
Window 98 SE/ME/2000(PRO)/XP	
- **You can install programs as follows :**
 - DataPlay Bass Components
 - Future Player
 - DataPlay file System
 - Java Runtime Environment

8

CONNECTING THE UNIT TO PC

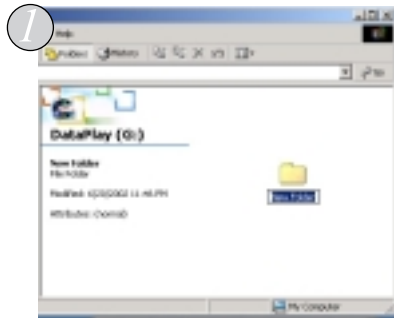
Connect the USB cable(Provided) to the USB port of your computer.
 Type "A" : USB port on the Panel of PC
 Type "B" : USB port of iDP-100
 Connect the USB cable to match the direction.



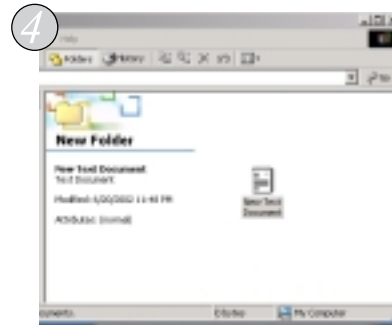
Connect the USB port on the Panel of PC.
 Turn on the iDP-100, remove the protective cover of USB port, and connect the USB cable.
 "USB CONNECTED" will appear on the LCD of the player.

9

SAVING THE GENERAL FILES OF PC TO THE PLAYER



1. Make a new folder in the DataPlay program.
2. Copy the files or folder to be copied.
3. Save the files to the new folder in the DataPlay program.



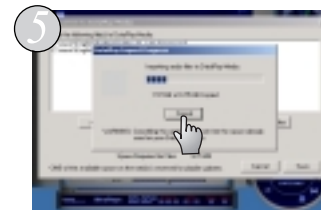
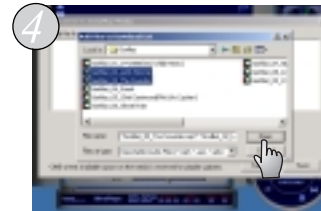
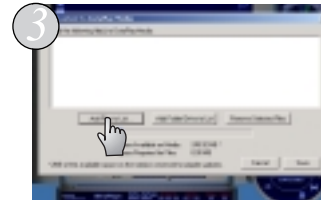
4. Click the "REC" button in the DataPlay program.

REC on the right of DataPlay blinks. After saving files, REC disappears. Without step 4, files are not saved.

Note : You can not play any other file format except CKMP3, CKAAC and CKQDX on the inserted media in the iDP-100. Also, file name is not displayed on the LCD of the iDP-100.

10

CONVERTING MP3 FILES TO CKMP3 FILES



1. Double Click the Future Player icon on the PC windows.
2. Stop the playback.
3. Click "My Music" Button.
4. Click "Add Files to List..." button or "Add Folder/Drive to List" button and Select desired files or folder/drive to be saved. To remove, click the "Remove Selected Files" button.
5. Click "Save" Button. CKMP3 files are saved in the folder called "MyMusic". To rename the "MyMusic", change it on the desktop. Red indicator on the player blinks during saving.

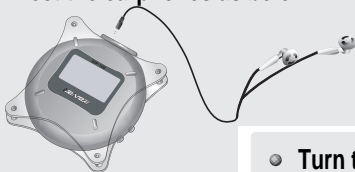
Note : If PC is not operated for a long time, retry converting files after turn the PC off and then on.

Note : You can not play CKMP3 files uploaded from the player to PC.

11

LISTENING TO MUSIC

- Connect the earphones as below.



Side A

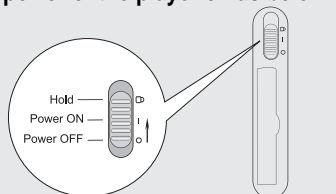


Side B

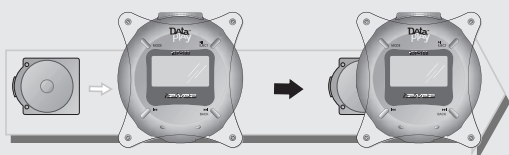
- Turn the power of the player on as below.



To protect the player from pollutants, the anti-dust cover is necessary. When you eject media from the player, open the anti-dust cover first!!



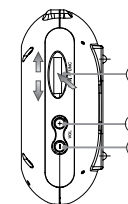
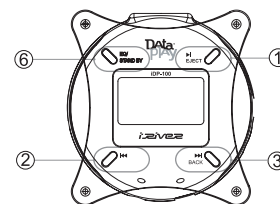
- Insert the media in the media compartment.



You can record and play on both sides of the media. Insert the media in the compartment with the side to be played or recorded facing down.

12

LISTENING TO MUSIC



- To play

- 1 Press the ►►/EJECT button.

- To select the music

- 2 ◀◀ : To select the previous music
- 3 ▶▶ : To select the next music

- To adjust the volume

- 4 VOL + : To increase volume
- 5 VOL - : To decrease volume

- To pause playback

- 1 Press the ►►/EJECT button. If pressed again, the file starts from the paused point. Approximately 1 minute later after playback has been paused, the player turns off to reduce battery consumption. You can change the pause off time by option.

- To search the music

- 2 ◀◀/ 3 ▶▶ : Hold pressed ◀◀/▶▶ buttons to search fast reverse or advance the music.

- To select the Equalizer.

- 6 Press the EQ button repeatedly for the desired mode and watch the display. The EQ pattern changes with each press of the button as shown below.
NORMAL → CLASSIC → JAZZ → ROCK → ULTRA BASS → USER EQ

- To get to Stand By Mode

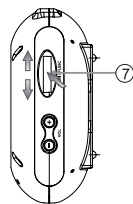
- 6 Press and hold the EQ/STAND BY button. (about 1sec)

- To change the media

- 1 Press and hold the ►►/EJECT button. EJECT indicator on the LCD displays and then NO Media appeared.

13

LISTENING TO MUSIC



● To use the NAVIGATION function

Press ⑦ NAVI/FUNC lever during playback and the music name displays on the LCD of the player. Then Push ⑦ NAVI/FUNC lever up or down to select the desired music. Please refer to the function controls for user-defined configuration. Press ⑦ NAVI/FUNC lever again to start playback.

● To set playback mode

Each time you push the ⑦ NAVI/FUNC lever up or down during playback or in stop mode, the interval playback is set. Please refer to the function controls for user-defined configuration.

MODE

You can enjoy various ways of playing by using playback mode. Please refer to the function controls for user-defined configuration.



With each upward or downward push of the NAVI/FUNC lever, the mode icon indicator on the LCD is changed.

● REPEAT

	Play a single track repeatedly.
	Play whole tracks in the directory(album) and stop.
	Play whole tracks in the directory(album) repeatedly.
	Play whole tracks on the media repeatedly.

● SHUFFLE

SFL	Randomly play whole tracks on the media repeatedly and stop.
	Play a single track repeatedly.
	Randomly play whole tracks in the directory(album) repeatedly and stop.
	Randomly play whole tracks in the directory(album) repeatedly.
	Randomly play whole tracks on the disc repeatedly.

MODE

INTRO

- 1 Play beginning to 10 seconds of each track in sequential order.

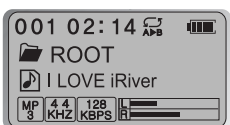
Above feature can be selected with Function Control Options.

Interval Repeat

Play selected interval repeatedly.



Push NAVI/FUNC lever upward once to select the beginning <A> point.



Push NAVI/FUNC lever upward again to select the ending point.
Push NAVI/FUNC lever upward again to release interval repeat.

Note : can not operate in AAC format.

SETTING THE MODE

To set the MODE

You can enjoy various ways of playing by using playback mode. Please refer to the function controls for user-defined configuration.



When the NAVI/FUNC lever is pushed up or down, the icon in the playback indicator is changed as below.



FAST SKIP(+10, -10 SEARCH/ ALBUM SEARCH)

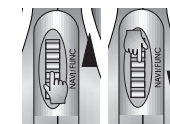
+10/-10 SEARCH

During playback, push NAVI/FUNC lever to up or down for approximately 1sec to the next 10th track or backward to previous 10th track.

ALBUM SEARCH

During playback, push NAVI/FUNC lever to up or down for approximately 1sec to the next album or backward to previous album.

You can choose +10/-10 search or album search by set option.



NAVIGATION(Search)

● NAVIGATION is the function to search a track.

You can find the desired song by using STOP and PLAY/PAUSE buttons.



1. Press the NAVI/FUNC lever.

2. Press ►► / BACK button to move to the upper folder.

3. Shift NAVI/FUNC lever up or down to select the desired folder.

4. Press the NAVI/FUNC lever.

5. Shift NAVI/FUNC lever to up or downward to select the desired music.

6. Press the NAVI/FUNC lever.

To cancel the selection, press ►► / BACK button.

MENU(Function control)

Function Control is subject to change with different firmware versions. Users can configure their own settings.

● Function : configuration

GENERAL	DISPLAY	TIMER
<input type="checkbox"/> beep	<input type="checkbox"/> back light	<input type="checkbox"/> sleep
<input type="checkbox"/> resume	<input type="checkbox"/> lcd contrast	<input type="checkbox"/> pwr off
<input type="checkbox"/> fade in	<input type="checkbox"/> remote lcd contrast	
<input type="checkbox"/> language	<input type="checkbox"/> visualization	
<input type="checkbox"/> load default	<input type="checkbox"/> tag information	
<input type="checkbox"/> firmware upgrade	<input type="checkbox"/> time	
CONTROL	MODE	User EQ
<input type="checkbox"/> fast scan	<input type="checkbox"/> repeat	<input type="checkbox"/> bass boost
<input type="checkbox"/> fast skip	<input type="checkbox"/> shuffle	<input type="checkbox"/> bass corner frequency
<input type="checkbox"/> scroll speed	<input type="checkbox"/> intro	<input type="checkbox"/> treble boost
<input type="checkbox"/> auto pause	<input type="checkbox"/> power	<input type="checkbox"/> treble corner frequency
<input type="checkbox"/> adapter volume		
<input type="checkbox"/> sound balance		

* Function control option may be different depending on firmware version.

● Function : MENU Operation

Activated by Long Click of NAVI/FUNC lever. Consists of 6 main menus with sub menu for each.

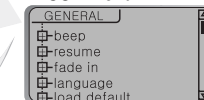
To return the previous step, press ►► / BACK button.



▼ MAIN Menu



▼ SUB Menu



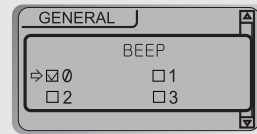
When a submenu is selected, you can change that submenu to your favorite setting.

FUNCTION CONTROL(general)

● GENERAL

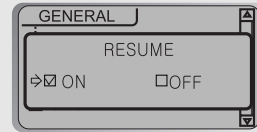
● BEEP VOL

: Configure beep sound (Steps : 0, 1, 2, 3) with volume level.



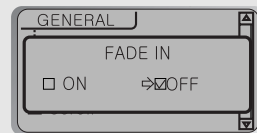
● RESUME

: When activated, player returns to the same settings after STOP or Power OFF.
Note : can not operate in AAC format.



● FADE IN

: When activated, volume increases gradually at playback mode to prevent sudden loudness.



● LANGUAGE

: Display proper fonts for tracks and ID3 tag information, which differs from the PC operating system in a different language.



-Ex) If a file or directory is recorded in English, set the Language option to "ENGLISH".

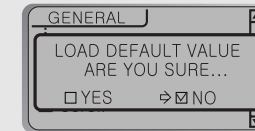
20

FUNCTION CONTROL(general/Display)

● LOAD DEFAULT VALUE

: Initialize to original factory setting.

Select YES → ► / BACK (To confirm)

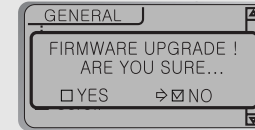


● FIRMWARE UPGRADE

: You can upgrade the Operating System of the player by downloading the firmware upgrade from the internet.

(Log on to "www.iriver.com or www.iriveramerica.com)

Select YES → ► / BACK (To confirm)



● DISPLAY

● BACK LIGHT

OFF : Backlight is always off.

BUTTON ON : Activates Back Light to say on as follows.

1: about 3 sec. 2: about 5 sec.

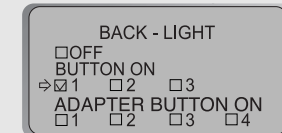
3: about 10 sec.

ADAPTER BUTTON ON : Backlight is always on if adapter is connected.

Otherwise:

1: about 3 sec. 2: about 5 sec.

3: about 10 sec. 4: Always

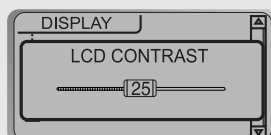


21

FUNCTION CONTROL(Display)

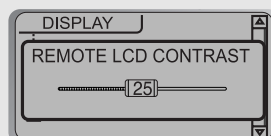
● LCD CONTRAST

: Adjust LCD contrast



● REMOTE LCD CONTRAST

: Adjust LCD contrast of remote control.

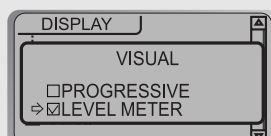


● VISUALIZATION

: Visualize audio signals at play mode.(diagram)

PROGRESSIVE ▶  30%

LEVEL METER ▶ 



● TAG INFORMATION

ON : Displays track with ID3 tag information.

OFF : Displays track with file name.

When set off the tag information, the track is playing and the next track can be displayed with ID3 tag information.



22

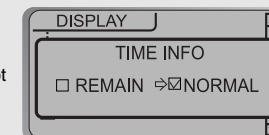
FUNCTION CONTROL(Display/Timer)

● TIME

Normal : display elapsed time.

Remain : display remaining time.

Note : If the track format is VBR, the time may not be accurate.



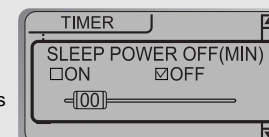
● TIMER(Set Auto Power Off)

● SLEEP POWER OFF

: Automatically power off after fixed time.(Time range can be set from 0 to 60 minutes by minute)

Use NAVI/FUNC button to adjust time.

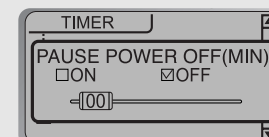
▶When the power is off, the sleep power off goes back to Zero setting.



● PAUSE POWER OFF

: Automatically power off at pause mode.(1~60 minutes)

Use NAVI/FUNC button to adjust time.



23

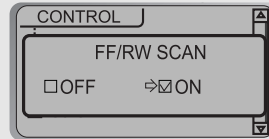
FUNCTION CONTROL(Control)

CONTROL

FAST SCAN

ON: Long click of ►► or ◀◀ for scan within the track.
Short click of ►► or ◀◀ for skipping.
OFF : fast scan within the folder.

Note : can not operate in AAC format.



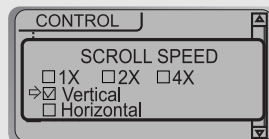
FAST SKIP

OFF : Skip does not activate.
ON : Playback previous or next 10th track.
DIRECTORY : Skip to previous or next directory.



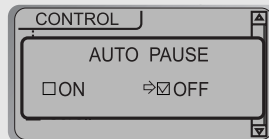
SCROLL SPEED

: Adjust scroll speed of characters displayed in LCD by 1x/ 2x/ 4x/ Vertical/ Horizontal



AUTO PAUSE

When activated, playback is automatically paused between the tracks, playing the next song available only by pressing the Play button each time.



FUNCTION CONTROL(Control)

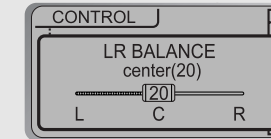
ADAPTER VOLUME

ON : When connected AC adapter, Volume is set at level 35.
OFF : This setting does not activate the adapter volume.



SOUND BALANCE

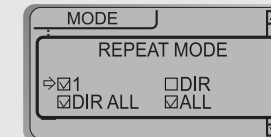
L(left end : 0) : produces sound out of the left channel only.
R(right end : 40) : produces sound out of the right channel only.
R, L Balance : 20



MODE(Play Mode)

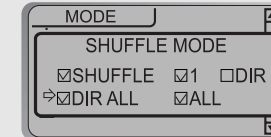
REPEAT MODE

: When selecting one mode, each push up or down of NAVI/FUNC lever is changed sequentially.
▷ Available with multiple section, selected modes are activated on mode.



SHUFFLE MODE

: When selecting one mode, each push up or down of NAVI/FUNC lever is changed sequentially.
Randomly play whole tracks in the directory repeatedly.



FUNCTION CONTROL(Control/EQ)

INTRO MODE

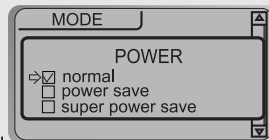
INTRO : Play beginning 10 seconds of each track.



POWER

You can select the access time and continuous play time.

Normal : Media access time : High speed
 Continuous play time : about 9 hours
 Power Save : Continuous play time : about 10.5 hours
 Super Power Save : Media access time : Low speed
 Continuous play time : about 12 hours

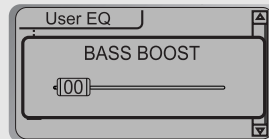


* 1000mA Battery used

USER EQ

BASS BOOST

: Bass Boost level is from 0 to 12dB.



BASS CORNER FREQUENCY

: Bass Boost frequencies are 50Hz, 100Hz and 200Hz.

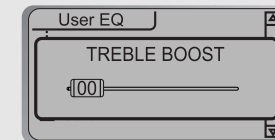
Bass Boost function is effective under the frequency range configured. Maximized at 200Hz.



FUNCTION CONTROL(Control/EQ)

TREBLE BOOST

: Treble Boost level is from 0 to 12dB.



TREBLE CORNER FREQUENCY

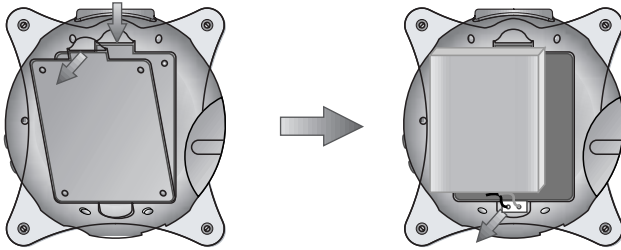
: Treble boost frequencies are 2kHz, 4kHz and 7kHz.

Treble Boost function is effective over the frequency range configured. Maximized at 2kHz.



POWER SUPPLY(Rechargeable Battery)

- Using Rechargeable battery
 - Remove the cover of battery compartment at rear panel.
 - Connect rechargeable battery(3.7V) by matching the direction of the battery connector, then close the cover.



CAUTION!

- Do not use a different type of rechargeable battery. It may cause damage or injury.
- The life of a rechargeable battery is approximately 12 months. Contact your distributor or our head office to purchase the battery.

28

POWER SUPPLY

● Recharging Method

WARNING!
BEFORE PLUGGING IN THE PLAYER FOR THE FIRST TIME, READ THE FOLLOWING SECTION CAREFULLY.

The voltage of the available power supply differs according to country or region. Be sure that the power supply voltage of the area where this unit will be used meets the required voltage (e.g., AC 230 V, 50 Hz or AC 120 V, 60 Hz) written on the adapter. Be sure to set this switch to match the voltage of the power supply in your area before plugging in the unit.

- The charging L.E.D. indicator(Yellow) illuminates on the front panel. When charging is done, it disappears.

Note : Use the adapter provided.
Do not use a different type of rechargeable battery, it may cause damage or injury.
Use the adapter when playing or recording for a long duration of time.
Charging time : Approx. 2.5 hours (At full discharge)
Remove the adapter from the player when not use.

● Playing using the adapter

You can also play the player while charging.
External power indicator icon, as in the picture at right, displays on the LCD.



29

Trouble Shooting

Should any problem persist after you have checked these symptoms, consult your iRiver dealer.

No power On

- Check whether the Power is OFF.
- Check whether the HOLD switch on the player is ON.
- Check whether the rechargeable battery is not charged.

No play and "NO MEDIA" displayed on the LCD

- Moisture condensation damages the machine. Moisture may condense on the optical pick-up lens inside this unit, one of the most crucial internal parts of the machine. Do not use the player when moisture condensation may occur. If condensation does occur, leave the player for two or three hours in the warm place. After two or three hours, the player will have warmed up and evaporated any moisture.
- Check whether Media is inserted.
- Check whether files on the Media are CKMP3 format. (If there is no supported music file then "NO Music Media" message will be displayed on the LCD.

Trouble Shooting

Should any problem persist after you have checked these symptoms, consult your iRiver dealer.

No sound or noise is heard

- Check whether VOLUME is set to "0". Connect the earphones firmly.
- Check whether the plug is dirty. Clean the plug with a dry and soft cloth.
- Corrupted CKMP3, CKAAC, CKQDX files may cause a static noise or sound cut off.
- Continuous and excessive shock may cause the malfunction. Check the volume again in a stable place.

AC adapter does not work

- Check whether the AC adapter you are using matches the voltage of the power supply in your area .
- Check whether the adapter is properly connected.

Trouble Shooting

Should any problem persist after you have checked these symptoms, consult your iRiver dealer.

Battery lifetime differs

- Check whether the player is being used on uncharged batteries.
- The life of the batteries supplied will vary due to operating conditions and the temperature of the location.

Characters in LCD are corrupted.

- Check out Menu → Display → Language and confirm whether the right language has been selected.

Recharging does not work

- Check whether the adapter plug is properly connected.
- Check whether the AC adapter is connected to match the voltage of the power supply in your area .

PRECAUTIONS

● On safety

- Should any objects fall on the console, or any liquid get on the console, unplug it and have it checked by qualified personnel before operating it any further.
- Do not put objects in the DC jack(External Power Input)
- Use only the suitable adapter provided with the player

● On Player

- Do not leave the player in a location near heat sources, or in a place subject to direct sunlight, excessive dust or sand, moisture, rain, mechanical shock, unlevelled surface, or in a car with its windows closed.
- Do not put any heavy object on top of the console. The player may be damaged.
- If the player causes interference to the radio or television reception, turn off the player or move it away from the radio or television.

PRECAUTIONS

● On Headphones and earphones

● Road Safety

Do not use headphones/ earphones while driving, cycling, operating any motorized vehicle. It may create a traffic hazard and is illegal in some areas. It can also be potentially dangerous to play your headsets at high volume while walking, especially at pedestrian crossings. You should exercise extreme caution or discontinue use in potentially hazardous situations.

● Preventing hearing damage

Avoid using headphones/earphones at high volume. Hearing experts advise against continuous, loud and extended play. If you experience a ringing in your ears, reduce volume or discontinue use.

● Consideration for others

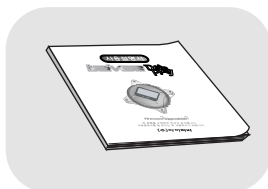
Keep the volume at a moderate level. This will allow you to hear outside sound and to be considerate to the people around you.

NOTES

- Tracks with damaged or corrupted parts are skipped or forward to next track.
- Can play files with extension CKMP3, CKAAC and CKQDX. Use the Navigation mode to select the tracks wanted.
- A total of 500 tracks(Included PlayList) within a media(a single side) can be recognized.
- Track information is displayed by filename or ID3 TAG information.
- Maximum operating time of the rechargeable batteries is 12 hours.
- Battery lifetime indicator may vary depending on the battery type and operation circumstances.
- DataPlay and DataPlay logo are trademarks of DataPlay, Inc. in the U.S. and other countries. DataPlay, ContentKey and the DataPlay logo are trademarks of DataPlay, Inc. in the U.S. and other countries.

ACCESSORIES

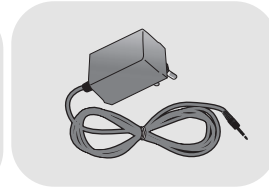
1. User Manual /
Warranty Card



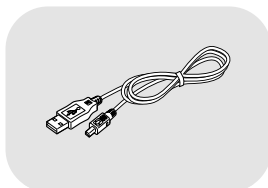
2. Earphone



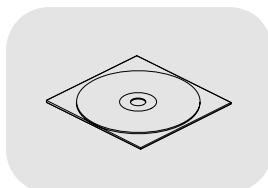
3. AC ADAPTER



4. USB Cable



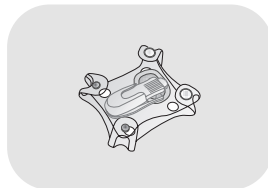
5. Installation CD



6. Blank Media for DataPlayer



7. Carrying Case



36

SPECIFICATION

Category	Item	Specifications
Audio (Disc)	No. of Channels	Stereo(L+R)
	Frequency / Range	20Hz~20kHz
	Headphone Output	11mW(L)+11mW(R)at 32Ω Max. Volume
	S/N Ratio	90dB : A Weighted
Disc Support	Disc Type	Dataplay Media
File Support	File Type	MPEG 1/2/2.5 Layer 3, QDX, AAC
	Bit Rate	Support 8Kbps ~ 320 Kbps
	Sample Rate	8KHz~44.1KHz
	Tag Info	ID3 V1, ID3 V2 2.0, ID3 V2 3.0
Power Supply	AC Adapter	DC 5V, 2.0A
	Battery	3.7 V Rechargeable Li-Ion Battery
General	Dimension	Approx. 76.5(W) x 83(L) x 34.5(H)mm
	Weight	Approx. 153g(1.000mAh)
	Operational Temperature	0°C ~ 40°C
Maximum Playing Time	1,000 mAh Battery	12 Hours
	1,500 mAh Battery	20 Hours

37