



CE0168

Bluetooth QD ID B017694

LG-C330 User Guide - English

Some of the contents in this manual may differ from your phone depending on the software of the phone or your service provider.



P/N: MFL67181704



Disposal of your old appliance

- 1 When this crossed-out wheeled bin symbol is attached to a product it means the product is covered by the European Directive 2002/96/EC.
- 2 All electrical and electronic products should be disposed of separately from the municipal waste stream via designated collection facilities appointed by the government or the local authorities.
- 3 The correct disposal of your old appliance will help prevent potential negative consequences for the environment and human health.
- 4 For more detailed information about disposal of your old appliance, please contact your city office, waste disposal service or the shop where you purchased the product.



Disposal of waste batteries/accumulators

- 1 When this crossed-out wheeled bin symbol is attached to batteries/accumulators of your product it means they are covered by the European Directive 2006/66/EC.
- 2 This symbol may be combined with chemical symbols for mercury(Hg), cadmium(Cd) or lead(Pb) if the battery contains more than 0.0005% of mercury, 0.002% of cadmium or 0.004% of lead.
- 3 All batteries/accumulators should be disposed separately from the municipal waste stream via designated collection facilities appointed by the government or the local authorities.
- 4 The correct disposal of your old batteries/accumulators will help to prevent potential negative consequences for the environment, animal and human health.
- 5 For more detailed information about disposal of your old batteries/accumulators, please contact your city office, waste disposal service or the shop where you purchased the product.

Installing the SIM card and the handset battery

Installing the SIM Card

When you subscribe to a cellular network, you are provided with a plug-in SIM card loaded with your subscription details, such as your PIN, any optional services available and many others.

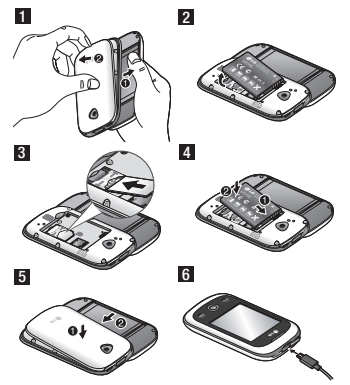
Important!

The plug-in SIM card and its contacts can be easily damaged by scratches or bending, so be careful when handling, inserting or removing the card. Keep all SIM cards out of the reach of small children.

Illustrations

Always switch the device off and disconnect the charger before removing the battery.

- 1 Remove the back cover.
- 2 Lift battery away.
- 3 Insert the SIM card.
- 4 Insert the battery pack.
- 5 Attach the back cover.
- 6 Charge the battery.



Phone Components



Earpiece

Call key
Dials a phone number and answers incoming calls.

Clear key
Go back to a previous screen.

End key
• Rejects a call.
• Press once to return to the home screen.



Volume keys

- When the screen is at the Home screen: Ring tone and touch tone volume.
- During a call: Earpiece volume.
- Down volume key: Press and hold to activate/ deactivate Silent mode.

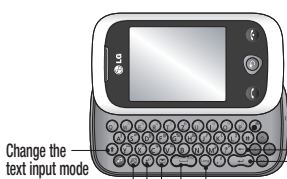
Handsfree or Stereo earphone connector



Power/Lock key

- Short press to turn on/off and lock the screen.
- Long press for power on/off.

Using your touch screen



Change the text input mode (capital/ small)

Internet Full Browsing

Instant Messenger

SMS

Space key

Writing Language Selection Key

Enter key
Tap to create a new line in the text editor field.

Clear key
• Clears a character each time it is pressed. Hold the key down to clear all input.

Touch screen tips

- To select an item, touch the centre of the icon.
- Do not press too hard. The touchscreen is sensitive enough to pick up a light, firm touch.
- Use the tip of your finger to touch the option you require. Be careful not to touch any other keys.
- Whenever your LG-C330 is not in use, it will return to the lock screen.

Control the touch screen

The controls on the LG-C330 touch screen change dynamically depending on the task you are carrying out.

Calls

Making a Call

- 1 Touch the to open the keypad.
- 2 Key in the number using the keypad.
- 3 Touch to initiate the call.

TIP! To enter + for making an international call, press and hold .

Contacts

Searching for a contact

- 1 Touch **Contacts**.
- 2 You see a list of contacts. Typing in the first letter of a contact's name in the Name field will jump the menu to that alphabetical area of the list.

Messaging

Your LG-C330 combines SMS and MMS into one intuitive and easy-to-use application.

Sending a message

- 1 Touch **Messages** in menu and touch **Write message** to begin composing a new message.
- 2 Touch **Insert** to add an image, video, sound, template and so on.

- 3 Touch **To** at the top of the screen to enter the recipients. Then enter the number or touch to select a contact. You can even add multiple contacts.
- 4 Touch **Send** when ready.

WARNING! If an image, video or sound is added to an SMS it will be automatically converted to an MMS and you will be charged accordingly.

Settings

Personalising your profiles

You can personalise each profile setting using the settings menu.

- 1 Touch **Profiles**.
- 2 Choose the profile you want to edit.
- 3 You can then change all the sounds and alert options available in the list, including your Ringtone and Volume, Message tone settings and more.

Efficient phone operation

Electronic devices

- Do not use your mobile phone near medical equipment without requesting permission. Avoid placing the phone over pacemakers, i.e. in your breast pocket.
- Some hearing aids might be disturbed by mobile phones.
- Minor interference may affect TVs, radios, PCs, etc.

Road safety

Check the laws and regulations on the use of mobile phones in the area when you drive.

- Do not use a hand-held phone while driving.
- Give full attention to driving.
- Use a hands-free kit, if available.
- Pull off the road and park before making or answering a call if driving conditions so require.
- RF energy may affect some electronic systems in your vehicle such as car stereos and safety equipment.

Technical data

Ambient Temperatures

Max.: +55°C (discharging) +45°C (charging)
Min.: -10°C

Tip

- 1 When you use a Bluetooth headset, A2DP and AVRCP profiles are not supported while you play video. It means you will not listen video sound if you use Bluetooth headset.
- 2 Bluetooth file transferring function will be blocked under some applications running. (Voice call, Camera/Camcorder, MusicPlayer, UMS/PCSync)

Changing your phone settings

Use the freedom of adapting the LG-C330 to your own preferences.

From the home screen, select and touch **Settings** then scroll to **Device settings**.

- When your vehicle is equipped with an air bag, do not obstruct it with installed or portable wireless equipment. It can cause the air bag to fail or cause serious injury due to improper performance.
- If you are listening to music whilst out and about, please ensure that the volume is at a reasonable level so that you are aware of your surroundings. This is particularly important when near roads.

Avoid damage to your hearing

Damage to your hearing can occur if you are exposed to loud sound for long periods of time. We therefore recommend that you do not turn the handset on or off close to your ear. We also recommend that music and call volumes are set to a reasonable level.

NOTE: Excessive sound pressure from earphones can cause hearing loss.

Blasting area

Do not use the phone where blasting is in progress.

Guidelines for safe and efficient use

Please read these simple guidelines. Not following these guidelines may be dangerous or illegal.

Exposure to radio frequency energy

Radio wave exposure and Specific Absorption Rate (SAR) information

This mobile phone model LG-C330 has been designed to comply with applicable safety requirements for exposure to radio waves. These requirements are based on scientific guidelines that include safety margins designed to assure the safety of all users, regardless of age and health.

- The radio wave exposure guidelines employ a unit of measurement known as the Specific Absorption Rate, or SAR. Tests for SAR are conducted using standardised methods with the phone transmitting at its highest certified power level in all used frequency bands.
- While there may be differences between the SAR

levels of various LG phone models, they are all designed to meet the relevant guidelines for exposure to radio waves.

- The SAR limit recommended by the International Commission on Non-Ionising Radiation Protection (ICNIRP) is 2W/kg averaged over 10g of tissue.
- The highest SAR value for this model phone tested by DASY4 for use close to the ear is 0.456 W/kg (10g) and when worn on the body is 0.668 W/kg (10g).
- SAR data information for residents in countries/ regions that have adopted the SAR limit recommended by the Institute of Electrical and Electronics Engineers (IEEE), which is 1.6 W/kg averaged over 1g of tissue.

Product care and maintenance

WARNING: Only use batteries, chargers and accessories approved for use with this particular phone model. The use of any other types may invalidate any approval or warranty applying to the phone, and may be dangerous.

Emergency calls

Emergency calls may not be available with all mobile networks. Therefore, you should never depend solely on the phone for emergency calls. Check with your local service provider.

Battery information and care

- You do not need to completely discharge the battery before recharging. Unlike other battery systems, there is no memory effect that could compromise the battery's performance.
- Use only LG batteries and chargers. LG chargers are designed to maximise the battery life.
- Do not disassemble or short-circuit the battery pack.
- Keep the metal contacts of the battery pack clean.
- Replace the battery when it no longer provides acceptable performance. The battery pack may be recharged hundreds of times until it needs replacing.
- Recharge the battery if it has not been used for a long time to maximise usability.

- Do not expose the battery charger to direct sunlight or use it in high humidity, such as in the bathroom.
- Do not leave the battery in hot or cold places, this may deteriorate the battery performance.
- There is a risk of explosion if the battery is replaced by an incorrect type.
- Dispose of used batteries according to the manufacturer's instructions. Please recycle when possible. Do not dispose as household waste.
- If you need to replace the battery, take it to the nearest authorised LG Electronics service point or dealer for assistance.
- Always unplug the charger from the wall socket after the phone is fully charged to save unnecessary power consumption of the charger.
- Actual battery life will depend on network configuration, product settings, usage patterns, battery and environmental conditions.

Accessories

There are various accessories for your mobile phone. You can select these options according to your personal communication requirements.

Charger



Battery



User Guide

Learn more about your LG-C330.



NOTE

- Always use genuine LG accessories.
- Failure to do this may invalidate your warranty.
- Accessories may vary in different regions.

