

Nokia E7-00 User Guide

Issue 1.0

Contents**Safety****5****Get started****7**

Keys and parts	7
Change the volume of a call, song, or video	11
Lock or unlock the keys and screen	11
Flashlight	12
Insert or remove the SIM card	12
Charge your device	13
Antenna locations	15
Headset	16
Switch the device on or off	16
Nokia account and Nokia's Ovi services	17
Device set-up	17
Copy contacts or pictures from your old device	18
Visit Nokia's Ovi Store	18
Use the in-device user guide	19

Install Nokia Ovi Suite on your PC**19****Basic use****21**

Touch screen actions	21
Interactive home screen elements	23
Switch between open applications	24
Write text	24
Keyboard shortcuts	29
Display indicators	30
Set the notification light to blink for missed calls or messages	32
Search in your device and on the internet	32
Use your device offline	32
Prolong battery life	33

Personalise your device**34**

Profiles	34
----------	----

Change your theme	35
Home screen	35
Organise your applications	38

Telephone**38**

Call a phone number	38
Search for a contact	38
Call a contact	39
Make a video call	39
Make a conference call	40
Call the numbers you use the most	41
Use your voice to call a contact	41
Make calls over the internet	42
Call the last dialled number	43
Record a phone conversation	43
Turn to silence	43
View your missed calls	44
Call your voice mailbox	44
Divert calls to your voice mailbox or another phone number	44
Prevent making or receiving calls	45
Allow calls only to certain numbers	46
Video sharing	46

Contacts**48**

About Contacts	48
Save phone numbers and mail addresses	48
Save a number from a received call or message	49
Contact your most important people quickly	49
Add a picture for a contact	49
Set a ringing tone for a specific contact	50
Send your contact information using My Card	50
Create a contact group	50
Send a message to a group of people	51
Copy contacts from the SIM card to your device	51

Back up your contacts to Ovi by Nokia	51	Contact a friend from a social networking service	62
Messaging	52	Add an event to your device calendar	62
About Messaging	52	Camera	63
Send a message	52	About Camera	63
Send an audio message	53	Take a picture	63
Receive messages	53	Save location information to your pictures and videos	63
View a conversation	54	Take a picture in the dark	64
Listen to a text message	54	Picture tips	64
Change language	54	Record a video	64
Mail	55	Send a picture	65
About Mail	55	Your pictures and videos	65
Get a free mail account from Ovi by Nokia	55	About Photos	65
Add a mailbox	56	View pictures and videos	65
Read mail	56	Edit the pictures you have taken	66
Send a mail	57	Video editor	66
Open mail from the home screen	57	Print a picture you have taken	67
Internet	57	View pictures and videos on a TV	68
About Web	57	Videos and TV	70
Browse the web	58	Videos	70
Add a bookmark	58	Watch Web TV	71
Subscribe to a web feed	58	Music and audio	72
Discover nearby events	59	Music player	72
Social networks	59	Buy music from Nokia's Ovi Music	74
About Social	59	Protected content	74
See your friends' status updates in one view	60	Record sounds	75
Post your status to social networking services	60	FM radio	75
Link your online friends to their contact information	61	Maps	77
See your friends' status updates on the home screen	61	Maps overview	77
Upload a picture or video to a service	61	My position	78
Share your location in your status update	62	Find places	81
		Favourites	83
		Share location	85
		Drive and Walk	85

Time management	90	What to do when the memory is full?	115
Clock	90	Message indicator blinking	115
Calendar	92	A contact appears twice in the contacts list	115
Office	94	Unreadable characters while browsing the web	115
Quickoffice	94	Prepare your device for recycling	115
Read PDF documents	96	Protect the environment	116
Make a calculation	96	Save energy	116
Write notes	96	Recycle	116
Translate words from one language to another	97	Product and safety information	117
Open or create zip files	97	Index	123
Connectivity	97		
Internet connections	97		
Wireless LAN	98		
Bluetooth	99		
USB data cable	102		
VPN connections	104		
Close a network connection	104		
Store your files on a remote drive	105		
Device management	106		
Keep your device software and applications up to date	106		
Manage files	107		
Increase available memory for more content	109		
Manage applications	109		
Synchronise content	110		
Copy contacts or pictures between devices	112		
Protect your device	112		
Find more help	113		
Support	113		
Access codes	114		
Troubleshooting	114		
If your device stops responding	114		
Restore original settings	114		

Safety

Read these simple guidelines. Not following them may be dangerous or illegal. Read the complete user guide for further information.

SWITCH OFF IN RESTRICTED AREAS



Switch the device off when mobile phone use is not allowed or when it may cause interference or danger, for example, in aircraft, near medical equipment, fuel, chemicals, or blasting areas.

ROAD SAFETY COMES FIRST



Obey all local laws. Always keep your hands free to operate the vehicle while driving. Your first consideration while driving should be road safety.

INTERFERENCE



All wireless devices may be susceptible to interference, which could affect performance.

QUALIFIED SERVICE



Only qualified personnel may install or repair this product.

CHARGERS AND OTHER ACCESSORIES



Use only chargers and other accessories approved by Nokia for use with this device. Do not connect incompatible products.

KEEP YOUR DEVICE DRY



Your device is not water-resistant. Keep it dry.

GLASS PARTS



The front cover of the device is made of glass. This glass can break if the device is dropped on a hard surface or receives a substantial impact. If the glass breaks, do not touch the glass parts of the device or attempt to remove the broken glass from the device. Stop using the device until the glass is replaced by qualified service personnel.

PROTECT YOUR HEARING

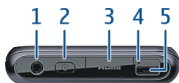



Listen to a headset at a moderate level, and do not hold the device near your ear when the loudspeaker is in use.

Get started

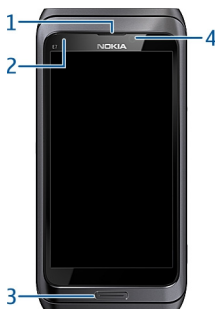
Keys and parts

Top



- 1 Nokia AV connector (3.5 mm)
- 2 Power key 
- 3 HDMI™ connector
- 4 Charging indicator
- 5 USB connector

Front



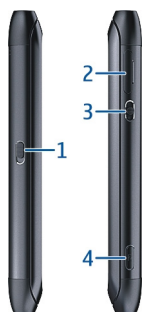
- 1 Earpiece
- 2 Light sensor
- 3 Menu key
- 4 Secondary camera lens


Back



- 1 Camera flash
- 2 Camera lens
- 3 Loudspeaker
- 4 Microphone

Sides



- 1 Key lock switch/Flashlight key
- 2 SIM card slot
- 3 Volume/Zoom key
- 4 Camera key 

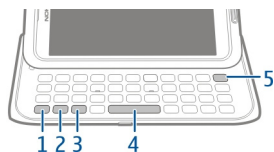
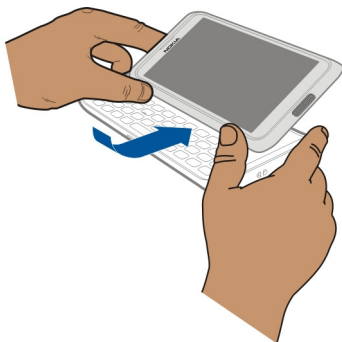
Bottom


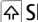


1 Microphone


Keyboard

Your device has a full keyboard. To open the keyboard, push the touch screen up. The display rotates automatically from portrait to landscape when you open the keyboard.



- 1  Function key. To insert special characters printed at the top of keys, press the function key, and then press the corresponding key. To enter several special characters in a row, press the function key twice. To return to normal mode, press the function key.
- 2  Shift key. To switch between the upper and lower case modes, press the shift key twice. To enter a single upper case letter in lower case mode, or a single lower case letter in upper case mode, press the shift key, and then press the desired alphabet key.

10 Get started

- 3 Sym key. To insert special characters not shown on the keyboard, press the sym key, and select the desired character. To change the writing language, press and hold the shift key, and then press the sym key, and select the desired language.
- 4 Space key
- 5  Backspace key. To delete a character, press the backspace key. To delete several characters, press and hold the backspace key.

Insert a variation of a letter

You can insert, for example, letters with accents. To insert á, press and hold the sym key, and then press A repeatedly, until the desired letter is displayed. The order and availability of letters depends on the selected writing language.

Insert a number or special character that is printed at the top of a key

Press and hold the desired key.

HDMI adapter

Share your favourite pictures and high-definition videos, and browse the web directly on your TV. Connect the adapter to your device, and then connect any compatible HDMI cable, to see it all on the big screen.



USB OTG adapter

Connect the USB On-The-Go (OTG) adapter to browse a compatible USB memory stick or drive. You can then transfer pictures, videos, documents, and other content between your device and the external memory. It's an easy way to back up your essential files.



Change the volume of a call, song, or video

Use the volume key.

You can change the volume during a call or when an application is active.

The built-in loudspeaker allows you to speak and listen from a short distance without having to hold the device to your ear.

Activate or deactivate the loudspeaker during a call

Select  or .

Lock or unlock the keys and screen

To avoid accidentally making a call when your device is in your pocket or bag, lock the keys and screen of your device.

Slide the lock switch.



Tip: If the lock switch is out of reach, to unlock the device, press the menu key, and select **Unlock**.

Set the keys and screen to lock automatically

1 Select **Menu > Settings and Phone > Display > Screen/keylock time-out**.

12 Get started

- 2 Define the length of time after which the keys and screen are locked automatically.

Flashlight

The camera flash can be used as a flashlight. To switch the flashlight on or off, slide and hold the lock switch for two seconds.

The flashlight can only be used when you are in the home screen. You can switch the flashlight on also when you are in the home screen and the keys and screen or the device is locked.

Do not shine the flashlight in anyone's eyes.

Insert or remove the SIM card

Do not attach any stickers to your SIM card.

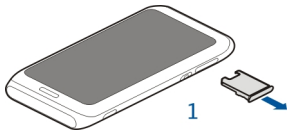


Important: Do not use a mini-UICC SIM card, also known as a micro-SIM card, a micro-SIM card with an adapter, or a SIM card that has a mini-UICC cutout (see figure) in this device. A micro SIM card is smaller than the standard SIM card. This device does not support the use of micro-SIM cards and use of incompatible SIM cards may damage the card or the device, and may corrupt data stored on the card.

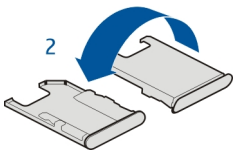


Insert the SIM card

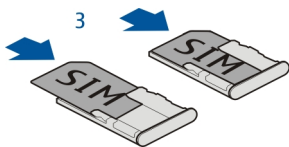
- 1 Remove the SIM card holder from the device.



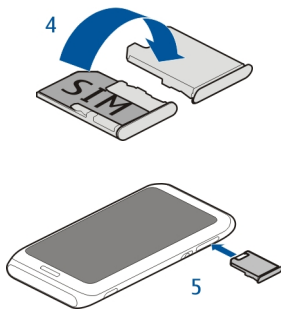
- 2 Turn the SIM card holder over.



- 3 Make sure the contact area is facing up, and insert the SIM card into the SIM card holder.



- 4 Turn the SIM card holder over and insert it back into the device.



Remove the SIM card

- 1 Switch the device off.
- 2 Remove the SIM card holder from the device.
- 3 Remove the SIM card.
- 4 Turn the SIM card holder over.
- 5 Insert the SIM card holder back into the device.

Charge your device

About the battery

Your device has an internal, nonremovable, rechargeable battery. Use only Nokia approved chargers designated for this device. You can also use a compatible USB data cable to charge your device.

Do not attempt to remove the battery from the device. Take the device to the nearest authorised service facility for replacement of the battery.

Authorised retail points may also offer a battery replacement service.



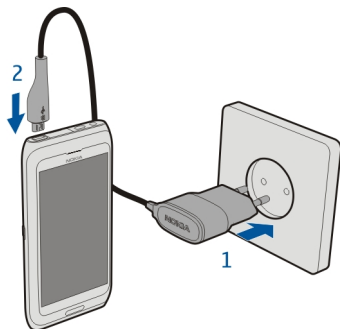
Important: Only qualified personnel or an authorised service facility should replace the battery. Unauthorised battery replacement may invalidate your warranty.

When your device is low on power, it goes into power save mode. To deactivate power save mode, press **ⓘ**, and select **Deactivate power saving**. When power save mode is activated, you may not be able to modify the settings of certain applications.

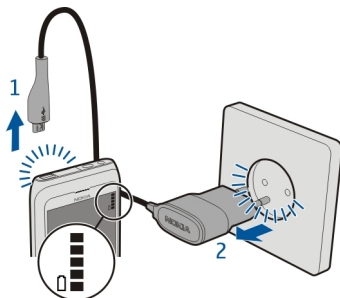
Charge the battery

Your battery has been partially charged at the factory, but you may need to recharge it before you can switch on your device for the first time.

If the device indicates a low charge, do the following:



1



2

You do not need to charge the battery for a specific length of time, and you can use the device while it is charging.

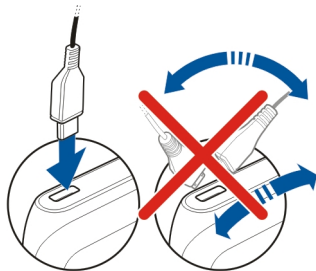
If the battery is completely discharged, it may take several minutes before the charging indicator appears on the display or before any calls can be made.

If the battery has not been used for a long time, to begin charging, you may need to connect the charger, then disconnect and reconnect it.

Charge the battery over USB

Battery low, but you don't have a charger with you? You can use a compatible USB cable to connect to a compatible device, such as a computer.

To avoid breaking the charger connector, be careful when connecting or disconnecting the charger cable.



If connected to a computer, you can synchronise your device while charging.

Charging over USB can take longer to start, and may not work if you connect through a non-powered USB hub. Your device charges more quickly when connected to a wall outlet.

When the battery is charging, the charging indicator light next to the USB connector is lit. When the battery charge is low, the charging indicator light flashes. It may take a while for charging to start.

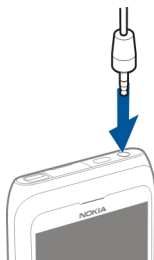
Antenna locations

Avoid touching the antenna area unnecessarily while the antenna is transmitting or receiving. Contact with antennas affects the communication quality and may cause a higher power level during operation and may reduce the battery life.



Headset

You can connect a compatible headset or compatible headphones to your device.



Switch the device on or off

Press and hold .



Nokia account and Nokia's Ovi services

When you switch on your device for the first time, you can create a Nokia account, so you can access Nokia's Ovi services.


With Ovi services and your Nokia account, you can, for example:

- See your friends' statuses in different social networking services
- Download games, applications, videos, pictures, themes, and ringing tones from Ovi Store
- Get to where you want to go with free walk and drive navigation
- Back up and manage your contacts in the Ovi internet service






To learn more about Ovi, go to www.ovi.com.

To create a Nokia account later, use your device to access an Ovi service, and you are prompted to create an account.

Device set-up

To define some basic settings for your device, select the Phone setup shortcut  that is on one of your home screens. To switch between home screens, swipe left or right.

You can do the following:

-  Copy contacts, pictures, and other content from your previous Nokia device
-  Personalise your device, by changing the ringtone and visual theme
-  Set up mail
-  Update your device software
-  Modify slide handling settings

To define the settings later, you can also select **Menu > Applications > Tools > Phone setup**.

Copy contacts or pictures from your old device

Want to copy important information from your previous compatible Nokia device and start using your new device quickly? Use the Phone switch application to copy, for example, contacts, calendar entries, and pictures to your new device, free of charge.

Select **Menu > Applications > Tools > Phone setup and Data transfer**.



If your old Nokia device does not have the Phone switch application, your new device sends it in a message. Open the message in the old device, and follow the instructions.

- 1 Select the device you want to connect to, and pair the devices. Bluetooth needs to be activated.
- 2 If the other device requires a passcode, enter the passcode. The passcode, which you can define yourself, must be entered in both devices. The passcode in some devices is fixed. For details, see the user guide of the device.
The passcode is valid only for the current connection.
- 3 Select the content and **OK**.

Visit Nokia's Ovi Store

 Select **Menu > Store**.

From Nokia's Ovi Store, you can download:

- Applications
- Themes, wallpapers, pictures, and videos
- Ringing tones
- Mobile games

Some items are free of charge; others you need to pay for with your credit card or in your phone bill. The availability of payment methods depends on your country of residence and your network service provider. Ovi Store offers content that is compatible with your mobile device and relevant to your tastes and location.

For more information, go to www.ovi.com.

Use the in-device user guide

Select **Menu** > **Applications** > **User guide**.

Open the user guide from an application


Select **Options** > **User guide**. This is not available for every application.

Search the user guide

When the user guide is open, select **Options** > **Search**, and enter a letter or a word in the search field.

Switch between the user guide and an application

Press and hold the menu key, swipe left or right, and select the desired application.

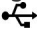
 indicates a link to a web page. Links to related topics may be at the end of instructions.

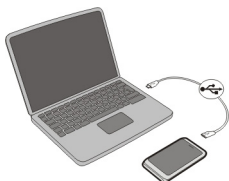
Install Nokia Ovi Suite on your PC

With the Nokia Ovi Suite PC application, you can manage content on your device, and keep it in sync with your computer. You can also update your device with the latest software, and download maps.

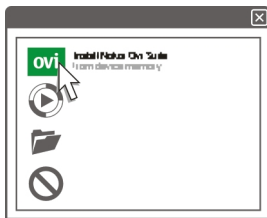
Download the latest version of Nokia Ovi Suite from www.ovi.com/suite.

If you cannot connect to the internet, to install Nokia Ovi Suite and Nokia Ovi Player from your device:

- 1 Use a compatible USB data cable to connect your device to your computer. If you are using Windows XP or Windows Vista on your computer, set the USB mode of your device to **Mass storage**: on your device, select the notification area in the top right corner, and select  > **USB** > **Mass storage**. Your device mass memory appears as a removable disk on your PC.



- 2 On your computer, select **Install Nokia Ovi Suite**.



If the installation window does not open automatically, open the installation file manually. Select **Open folder to view files**, and double-click **Install_Nokia_Ovi_Suite.exe**.



- 3 Follow the instructions.
- 4 When the installation is complete, if you are using Windows XP or Windows Vista on your computer, set the USB mode of your device to **Media transfer**: on your device, select the notification area in the top right corner, and select **USB > Media transfer**.

To learn more about Nokia Ovi Suite, go to www.ovi.com/suite.

To check which operating systems Nokia Ovi Suite supports, go to www.nokia.com/support.

Basic use

Touch screen actions

To interact with the user interface, tap or tap and hold the touch screen.

Open an application or other screen element

Tap the application or element.

Access functions quickly

Tap and hold the item. A pop-up menu with available options opens. For example, to send an image or delete an alarm, tap and hold the image or alarm, and from the pop-up menu, select the appropriate option.



If you tap and hold the home screen, editing mode is activated.



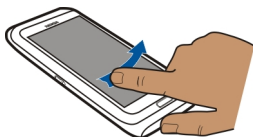
Drag an item



Tap and hold the item, and slide your finger across the screen. The item follows your finger.

You can drag items in the home screen or the main menu, when you have activated editing mode.

Swipe



Place a finger on the screen, and steadily slide your finger in the desired direction. For example, when you are viewing a picture, to view the next picture, swipe left.

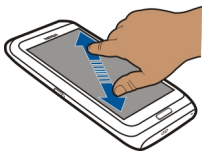
Scroll in a list or menu

Place your finger on the screen, slide it quickly up or down the screen, then lift your finger. The content of the screen scrolls with the speed and direction it had at the moment of release. To select an item from a scrolling list and to stop the movement, tap the item.



Zoom in

Place two fingers on an item, such as a picture or web page, and slide your fingers apart.



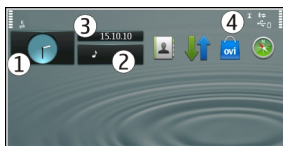
Zoom out

Place two fingers on the item, and slide your fingers together.

Tip: You can also tap the item twice to zoom in or out.

Interactive home screen elements

The home screen elements are interactive. For example, you can change the date and time, set alarms, write calendar entries, or edit the profiles directly in the home screen.



Set an alarm

Select the clock (1).

Activate or edit profiles

Select the profile (2).

View or edit your schedule

Select the date (3).


View missed calls and received messages

Select the notification area (4).

View available WLANs or manage Bluetooth connectivity

Select the notification area (4).

Modify the connectivity settings

Select the notification area (4) and .

In most other views, you can select the notification area (4), and do the following:

- Modify the connectivity settings.
- Open the Clock application, and set an alarm.
- View the battery status, and activate power saving mode.
- View notifications of missed calls or received messages.
- Open the WLAN wizard, and connect to a WLAN.
- Manage Bluetooth connectivity.

Switch between open applications

You can see which applications and tasks are open in the background, and switch between them.

Press and hold the menu key, swipe left or right, and select the desired application.



Applications running in the background increase the demand on battery power and use memory. To close an application that you are not using, select **X**.

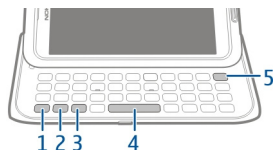
Tip: To close all open applications, select and hold the task switcher, and from the pop-up menu, select **Close all**.

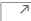
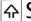



Write text

Keyboard input

Keyboard

Your device has a full keyboard. To open the keyboard, push the touch screen up. The display rotates automatically from portrait to landscape when you open the keyboard.



- 1  Function key. To insert special characters printed at the top of keys, press the function key, and then press the corresponding key. To enter several special characters in a row, press the function key twice. To return to normal mode, press the function key.
- 2  Shift key. To switch between the upper and lower case modes, press the shift key twice. To enter a single upper case letter in lower case mode, or a single lower case letter in upper case mode, press the shift key, and then press the desired alphabet key.
- 3  Sym key. To insert special characters not shown on the keyboard, press the sym key, and select the desired character. To change the writing language, press and hold the shift key, and then press the sym key, and select the desired language.
- 4  Space key
- 5  Backspace key. To delete a character, press the backspace key. To delete several characters, press and hold the backspace key.

Insert a variation of a letter

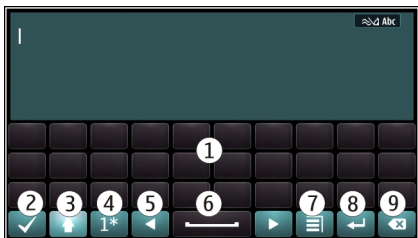
You can insert, for example, letters with accents. To insert **á**, press and hold the sym key, and then press **A** repeatedly, until the desired letter is displayed. The order and availability of letters depends on the selected writing language.

Insert a number or special character that is printed at the top of a key

Press and hold the desired key.

Touch input**Enter text with the virtual keyboard****Use the virtual keyboard**



Select a text input field, and turn your device so it is horizontal.



- 1 Virtual keyboard
- 2 Close key - Close the virtual keyboard.
- 3 Shift and caps lock key - To enter an upper case character when writing in lower case, or vice versa, select the key before entering the character. To activate caps lock mode, select the key twice. A line under the key indicates that caps lock mode is activated.
- 4 Character range - Select the desired character range, such as numbers, or special or accented characters.
- 5 Arrows keys - Move the cursor left or right.
- 6 Space bar - Insert a space.
- 7 Input menu - Activate predictive text input or change the writing language.
- 8 Enter key - Move the cursor to the next row or text input field. Additional functions are based on the current context. For example, in the web address field of the web browser, it acts as the Go icon.
- 9 Backspace key - Delete a character.

Activate predictive text input with the virtual keyboard

Predictive text input may not be available in all languages.


- 1 Select  > **Input options** > **Activate prediction**.  is displayed.
- 2 Start writing a word. Your device suggests possible words as you write. When the correct word is displayed, select the word.

- 3 If the word is not in the dictionary, the device suggests an alternative word from the dictionary. To add the new word to the dictionary, select the word you have written.

Deactivate predictive text input mode

Select  > Input options > Deactivate prediction.

Modify the text input settings

Select  > Input options > Settings.

Enter text with the virtual keypad

Use the virtual keypad

Select a text input field, and turn your device so it is vertical.



- 1 Number keys
- 2 * - Enter a special character, or when predictive text input mode is activated and the word underlined, cycle through the word candidates.
- 3 Shift key - Change the character case. To activate or deactivate predictive text input mode, quickly select the key twice. To switch between the letter and number modes, select and hold the key.
- 4 Close key - Close the virtual keypad.
- 5 Arrow keys - Move the cursor left or right.
- 6 Input menu - Activate predictive text input or change the writing language.

- 7 Backspace key - Delete a character.
- 8 Text input indicator (if available) - Indicates the character case, and if letter or number mode or predictive text input mode is activated.

Activate traditional text input with the virtual keypad

Quickly select # twice.

Enter a character

- 1 Select a number key (1-9) repeatedly, until the desired character is displayed. There are more characters available than are visible on the key.
- 2 If the next letter is located on the same key, wait until the cursor is displayed or move the cursor forward, and select the key again.

Insert a space


Select 0.

Move the cursor to the next line

Quickly select 0 three times.

Activate predictive text input with the virtual keypad

Predictive text input is based on a built-in dictionary to which you can add new words. Predictive text input is not available for all languages.

- 1 Select  > **Activate predictive text.**
- 2 To write the desired word, use the keys 2-9. Select each key once for each letter. For example, to write Nokia when the English dictionary is selected, select 6 for N, 6 for o, 5 for k, 4 for i, and 2 for a.
The word suggestion changes after each key selection.
- 3 If the word is not correct, select * repeatedly, until the correct match is displayed. If the word is not in the dictionary, select **Spell**, and enter the word using traditional text input mode, and select **OK**.
If ? is displayed after the word, the word is not in the dictionary. To add a word to the dictionary, select *, enter the word using traditional text input mode, and select **OK**.
- 4 To insert a space, select 0. To insert a common punctuation mark, select 1, and then select * repeatedly, until the correct punctuation mark is displayed.
- 5 Start writing the next word.

Deactivate predictive text input

Quickly select # twice.

Define the writing language

Select **Menu** > **Settings and Phone** > **Touch input** > **Writing language**.

Change the language when using the keyboard

Select  > **Input options** > **Writing language**.

Change the language when using the keypad

Select  > **Writing language**.

Keyboard shortcuts

Shortcuts can make the use of the applications more efficient.

General shortcuts

Ctrl + A	Select all.
Ctrl + B	Use bold font.
Ctrl + C	Copy text.
Ctrl + V	Paste text.
Ctrl + X	Cut text.
Shift + Sym	Change the writing language.






E-mail shortcuts

A	Reply to all.
B	Move down in the current view.
C	Create a new message.
D	Delete a message.
F	Forward a message.
H	Open the in-device user guide.
I	Collapse or expand the message list.
J	Move one screen up.
K	Move one screen down.
L	Mark a message with a flag.
M	Move a message to a different folder.




N	Go to the next message.
O	Open a message.
P	Go to the previous message.
R	Reply to a message.
S	Search for a message.
T	Move up in the current view.
U	Mark a message as read or unread.
Z	Synchronise the mail account.
Ctrl + S	Save a message in the Drafts folder

Display indicators




General indicators

	The touch screen and keys are locked.
	The device alerts silently for incoming calls or messages.
	You have set a clock alarm.
	A timed profile is activated.
	You have a missed calendar event.









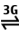








Call indicators

	Someone has tried to call you.
2	You are using your second phone line (network service).
	You have set your device to divert incoming calls to another number (network service). If you have two phone lines, a number indicates the active line.
	Your device is ready for an internet call.
D	You have an ongoing data call (network service).



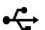

Messaging indicators





	You have unread messages. If the indicator is blinking, the SIM card memory for messages may be full.
	You have received new mail.
	You have messages waiting to be sent in the Outbox folder.

Network indicators

	Your device is connected to a GSM network (network service).
	Your device is connected to a 3G network (network service).
	You have a GPRS packet data connection (network service).  indicates that the connection is on hold and  that a connection is being established.
	You have an EGPRS packet data connection (network service).  indicates that the connection is on hold and  that a connection is being established.
	You have a 3G packet data connection (network service).  indicates that the connection is suspended and  that a connection is being established.
	You have an HSPA data connection (network service).  indicates that the connection is suspended and  that a connection is being established.
	A WLAN connection is available (network service).  indicates that the connection is encrypted and  that the connection is not encrypted.

Connectivity indicators

	Bluetooth is active.  indicates that your device is sending data. If the indicator is blinking, your device is trying to connect to another device.
	You have connected a USB cable to your device.
HDMI	You have connected an HDMI cable to your device.
	GPS is active.


	The device is synchronising.
	You have connected a compatible headset to the device.
	You have connected a compatible TV-out cable to the device.
	You have connected a compatible text phone to the device.

Set the notification light to blink for missed calls or messages


Your device has a notification light in the menu key. When the light blinks, you have missed a call or a message has arrived.

Select **Menu > Settings and Phone > Notification lights > Notification light.**

Search in your device and on the internet

 With the Search application, you can find any item in your device.

- 1 Select **Menu > Applications > Search.**
- 2 Enter a search word in the search field, or browse the content categories.

Tip: You can add a search widget to the home screen. With the search widget, you can also search the internet. Tap and hold the home screen, and select  and the search widget from the list.

Use your device offline

In radio sensitive environments, where you are not allowed to make or receive calls, you may still be allowed to access your calendar, contacts list, and offline games if you activate the offline profile.

In the home screen, select the profile and **Offline.**

When the offline profile is activated, your connection to the cellular network is closed. All radio frequency signals between the device and the cellular network are prevented. If you try to send a message, it is placed in the Outbox folder, and is sent only when another profile is activated.

You can also use your device without a SIM card. If you remove the SIM card, the offline profile is activated.




Important: In the offline profile you cannot make or receive any calls, or use other features that require cellular network coverage. You may be able to call the official emergency number programmed into your device. To make calls, you must first change to another profile.

When you use the offline profile, you can still use WLAN, for example, to read your mail or browse the internet. You can also use Bluetooth connectivity. Remember to comply with any applicable safety requirements when you establish and use WLAN or Bluetooth connections.

Prolong battery life

Many features in your device increase the demand on battery power and reduce the battery lifetime. To save battery power, note the following:

- Always charge the battery fully.
- Activate power saving mode. Press the power key, and select **Activate power saving**. The device settings, such as Network mode and the screen saver, are optimised. To deactivate power saving mode, press the power key, and select **Deactivate power saving**.
- Set your device to retrieve mail less frequently. Select **Menu > Applications > Mail > Settings**, your mailbox, and **Sync frequency**. If you have additional mailboxes, you may need to set the retrieval frequency separately for each mailbox.
- Mute unnecessary tones, such as key tones.
- Use wired headphones, rather than the loudspeaker.
- Deactivate the background animation effects. Select **Menu > Settings and Themes > General > Options > Theme effects > Off**.
- Deactivate the Big clock screen saver. Select **Menu > Settings and Themes > Screen saver > None**.
- Activate a dark theme. Select **Menu > Settings and Themes > General**.
- Change the length of the time-out period after which the device display switches off. Select **Menu > Settings and Phone > Display > Light time-out**. To adjust the light sensor that observes lighting conditions and adjusts the display brightness, in the display settings, select **Light sensor**.
- If the signal strength of the cellular network varies in your area, it increases the demand on battery power.
- If the network mode is set to use both GSM and 3G (dual mode) networks, the device searches for the 3G network. To set your device to use only the GSM network, select **Menu > Settings and Connectivity > Network > Network mode > GSM**.
- Deactivate Bluetooth when not needed. Select **Menu > Settings and Connectivity > Bluetooth > Bluetooth > Off**.
- Stop your device from scanning for available WLANs in the background. Select **Menu > Settings and Connectivity > WLAN > Options > Settings > Show WLAN availability > Never**.
- When connecting to the internet, use a WLAN connection, rather than a packet data (GPRS or 3G) connection.

- Set the packet data connection to be established only when needed. Select **Menu > Settings and Connectivity > Admin. settings > Packet data > Packet data connection > When needed.**
- When you are listening to music, and do not want to make or receive calls, activate the offline profile.
- Close the applications you are not using. Press and hold the menu key, swipe until the desired application is displayed, and select .

Personalise your device

Profiles

About profiles

 Select **Menu > Settings and Profiles.**

Waiting for a call but can't let your phone ring? Your device has various settings groups called profiles, which you can personalise for different events and environments. You can also create your own profiles.

You can personalise the profiles in the following ways:

- Change the ringing and message alert tones.
- Adjust the volume of ringing and key tones.
- Mute key tones and warning tones.
- Activate vibrating alerts.
- Set the device to say the name of the contact who is calling.

Personalise your tones

You can personalise your device tones for each profile.

Select **Menu > Settings > Profiles.**

- 1 Select the desired profile.
- 2 Select **Personalise** and the desired option.

Tip: Download ringing tones from Ovi Store. To learn more about Ovi Store, go to www.ovi.com.

Silence your device

When the silent profile is activated, all ringing and alert tones are muted. Activate this profile when you are at the cinema or in a meeting.

In the home screen, select the profile and **Silent**.

Change your profile for meetings or outdoor use

When the meeting profile is activated, your device discreetly beeps once instead of ringing. When the outdoor profile is activated, the ringing tone is louder, so you won't miss a call in a noisy environment.

In the home screen, select the profile and **Meeting** or **Outdoor**.

Create a new profile

How can you make your device meet your needs at work or college or home? You can create new profiles for different situations, and give them appropriate names.

- 1 Select **Menu** > **Settings** > **Profiles and Options** > **Create new**.
- 2 Define your profile settings, and select **Profile name**.
- 3 Enter a name for the profile.


Set a timed profile

You can activate a profile until a set time, after which the previously used profile is activated.

Select **Menu** > **Settings** > **Profiles**.

- 1 Select the desired profile and **Timed**.
- 2 Set the time that you want the timed profile to expire at.

Change your theme

 With themes, you can change the colours and look of your display.

Select **Menu** > **Settings** > **Themes**.

Select **General** and a theme.

Some themes include background animation effects. To save battery power, select **General** > **Options** > **Theme effects** > **Off**.

Tip: Download themes from Ovi Store. To learn more about Ovi Store, go to www.ovi.com.

Home screen

About the home screen

In the home screen, you can quickly access your most frequently used applications and create shortcuts for different features. You can view your favourite contacts, and quickly call, start conversations, or send messages to them. You can also control applications, such as Music.

You can have more than one home screen page, for example, separate home screens for work and private life.

The home screen elements are interactive. For example, if you select the clock, the **Clock** application opens.

Predefined home screens

Your device has separate home screens for business and personal needs, and a screen for your internet links. You can personalise the screens to your liking.



To switch to another home screen, swipe left or right. ● ○ ● indicates the currently displayed home screen.

Personalise the home screen

Want to see your favourite landscape or pictures of your family in the home screen background? You can change this wallpaper, and rearrange items in the home screen, to personalise it to your liking.

Tip: If you have more than one home screen, you can switch between them also while editing, and personalise all your home screens at the same time.

Change the wallpaper

- 1 Tap and hold the home screen.
- 2 Select **Options** > **Change wallpaper** > **Image**.
- 3 Select the desired picture.
- 4 Select **Done**.

Tip: Download more background images from Nokia's Ovi Store. To learn more about Ovi Store, go to www.ovi.com.

Rearrange items in the home screen

- 1 Tap and hold the home screen.
- 2 Drag and drop items to a new location.



- 3 Select **Done**.

Add items to the home screen

Want to open your favourite applications directly from the home screen? You can create shortcuts to your most used features. You can also add mini-applications (widgets), that display helpful information, such as the current weather conditions.


You can add shortcuts to applications, web bookmarks, or actions, such as writing a message.

Add a shortcut to the home screen

- 1 Tap and hold the home screen.
- 2 Select the shortcut widget and **Settings**.
- 3 Select the shortcut you want to define, and select **Bookmark** or **Application** and the desired item.
- 4 Select **Back** > **Done**.

Tip: To remove a shortcut, replace it with another one.

Add a widget to the home screen

- 1 Tap and hold the home screen.
- 2 Select  and the desired widget from the list.
- 3 Select **Done**.

Tip: To download more widgets, select **Store**.

Using the service or downloading content may cause transfer of large amounts of data, which may result in data traffic costs.

Some home screen widgets may connect to the internet automatically. To prevent this, select **Options** > **Widgets to offline mode**.

Remove a widget from the home screen

- 1 Tap and hold the home screen.
- 2 Select the widget, and from the pop-up menu, select **Remove**.

3 Select Done.

Organise your applications

Want to open your most used applications more quickly? In the main menu, you can organise your applications and hide less used applications in folders.

Press the menu key, and select **Options > Organise**.

Create a new folder

Select **Options > New folder**.



Move an application to a folder

Select and hold the application, and from the pop-up menu, select **Move to folder** and the new folder.

Tip: You can also drag and drop applications and folders.

Telephone

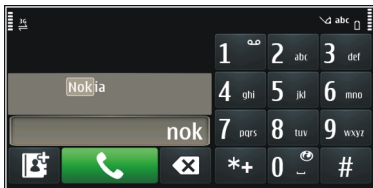
Call a phone number

- 1 In the home screen, select **Call** to open the dialler, and enter the phone number. To enter the + character, used for international calls, select * twice.
- 2 To make the call, select .
- 3 To end the call, select .

Search for a contact

You can search for a contact you have saved in the contacts list.

In the home screen, open the keyboard, and start entering the contact's first or second name. You can also search by company name.



Deactivate contact search

In the dialler, select **Options > Contact search > Off**.

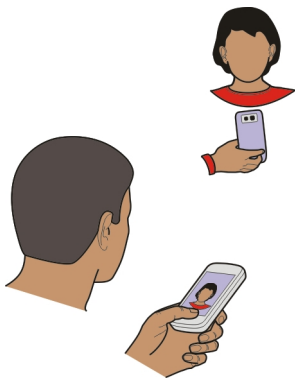
Call a contact

Select **Menu** > **Contacts**.

- 1 To search for a contact, enter the first letters or characters of the first or second name in the search field.
- 2 Select the contact.
- 3 In the contact card, select **Voice call**.
- 4 If the contact has more than one phone number, select and hold **Voice call**, and select the desired number.

Make a video call

When you make a video call (network service), you can see a live, two-way video between you and the recipient of the call.




To make a video call, you need to be in a 3G network.


For information on availability and costs, contact your service provider.

Video calls can only be made between two parties. Video calls cannot be made while another voice, video, or data call is active.



- 1 Select **Menu** > **Contacts**, and search for a contact.
- 2 Select the contact, and in the contact card, select **Video call**.

The secondary camera on the front of your device is used by default for video calls. Starting a video call may take a while. If the call is not successful (for example, video calls are not supported by the network, or the receiving device is not compatible), you are asked if you want to try a normal call or send a message instead.

The video call is active when you see two videos, and hear the sound through the loudspeaker. The call recipient may deny video sending (indicated with ) and you only hear the voice of the caller, and may see an image or a grey screen.

- 3 To end the video call, select .

Indicators

-  You are not receiving video (the recipient is not sending video or the network is not transmitting it).
-  You have denied video sending from your device.

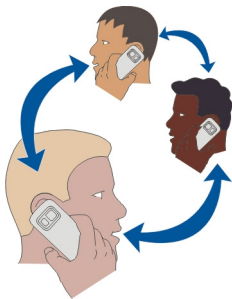
Send an image rather than live video


Select **Menu** > **Settings and Calling** > **Call** > **Image in video call**.

If you do not send live video, the call is still charged as a video call.

Make a conference call

Your device supports conference calls between a maximum of six participants, including yourself. Video conference calls are not supported.




- 1 Make a call to the first participant.
- 2 To make a call to another participant, select **Options** > **New call**. The first call is put on hold.
- 3 When the new call is answered, to add the first participant to the conference call, select .

Add a new participant to a conference call

Make a call to another participant, and add the new call to the conference call.

Have a private conversation with a conference call participant

Select .

Go to the participant, and select . The conference call is put on hold on your device. The other participants continue the conference call.

To return to the conference call, select .

Drop a participant from a conference call

Select , go to the participant, and select .

End an active conference call

Select .

Call the numbers you use the most

You can quickly call your friends and family when you assign your most-used phone numbers to the number keys of your device.

Select **Menu** > **Settings and Calling** > **Speed dialling**.

Assign a phone number to a number key

- 1 Select the number key to which you want to assign the phone number.
1 is reserved for the voice mailbox.
- 2 Select the phone number from your contacts list.

Remove or change a phone number assigned to a number key

Select and hold the assigned key, and from the pop-up menu, select **Remove** or **Change**.

Make a call

In the home screen, select **Call** to open the dialler, and select and hold the assigned number key.

Use your voice to call a contact

With the Voice commands application you can use your voice to make calls or control your device.

Voice commands are not dependent on the speaker's voice. Commands are automatically created by your device.



Note: Using voice tags may be difficult in a noisy environment or during an emergency, so you should not rely solely upon voice dialling in all circumstances.

When you use voice dialling, the loudspeaker is in use. Hold the device at a short distance away when you say the voice command.

- 1 In the home screen, select and hold **Call**. If a compatible headset with the headset key is attached, press and hold the headset key.
- 2 A short tone sounds, and **Speak now** is displayed. Say clearly the name that is saved for the contact.
- 3 The device plays a synthesised voice command for the recognised contact in the selected device language, and displays the name and number. To cancel the voice dialling, select **Quit**.

Listen to a voice command for a contact

- 1 Select a contact and **Options** > **Voice tag details**.
- 2 Select a contact detail.

If several numbers are saved for a name, you can say also the name and the number type, such as mobile or telephone.

Make calls over the internet

About internet calls

With the internet call network service, you can make and receive calls over the internet. Internet call services may support calls between computers, between mobile phones, and between a VoIP device and a traditional telephone.

Some internet call service providers allow free internet calls. For availability and connectivity costs, contact your internet call service provider.

To make or receive an internet call, you must be in the service area of a WLAN or have a packet data (GPRS) connection in a 3G network, and be signed in to an internet call service.

Install an internet call service

You can search for internet call services from Ovi Store. For details, go to www.ovi.com.

- 1 Download an installation widget for the internet call service.
- 2 To start the installation, select the installation widget.
- 3 Follow the instructions.

When an internet call service has been installed, a tab for the service is displayed in the contacts list.

Make an internet call

When you are signed into a internet call service, you can make a call from the friends list or the contacts list.

Select **Menu** > **Contacts**.

Call a contact in the friends list


- 1 Open the internet call service tab, and sign in to a internet call service.
- 2 Select a contact from the friends list, and select **Internet call**.


Make an internet call to a phone number or SIP address

- 1 In the home screen, select **Call** to open the dialler, and enter the number.
- 2 Select **Options** > **Call** > **Internet call**.

Call the last dialled number



Trying to call someone, but they are not answering? It is easy to call them again. In the call log, you can see information about the calls you have made and received.

In the home screen, select **Call** to open the dialler, and select . To call the last dialled number, select the number from the list.

Tip: To view the last dialled numbers quickly, in the home screen, select .

Record a phone conversation

With the Recorder application, you can record phone conversations.

- 1 During an active voice call, select **Menu** > **Office** > **Recorder**.
- 2 To start recording, select .
- 3 To stop recording, select . The sound clip is automatically saved to the Sound files folder in the File manager application.

Both parties hear a tone at regular intervals during the recording.

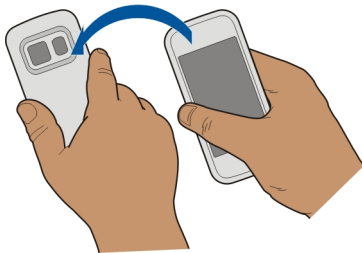
Turn to silence

If your device rings in a situation where you do not want to be disturbed, you can turn the device to silence the ringing tone.

Activate the turn to silence feature

- 1 Select **Menu** > **Settings** and **Phone** > **Sensor settings** > **Sensors** > **On**.
- 2 Select **Turning control** > **Silence calls**.

When your device rings, turn your device display down.





View your missed calls



In the home screen, you can see when you have missed calls. To view the phone number, select **Show**. The caller's name is displayed if stored in the contacts list.

Missed and received calls are logged only if supported by the network, and the device is switched on and within the network service area.

Call back the contact or number

Select the contact or number.

To view the missed calls list later, in the home screen, select **Call** to open the dialler, select  and open the missed calls tab .

Tip: To view missed calls quickly, in the home screen, select , and open the missed calls tab .

Call your voice mailbox

You can divert your incoming calls to your voice mailbox (network service). People can leave you a message, for example, when you have not answered the call.

In the home screen, select **Call** to open the dialler, and select and hold **1**.

Change the phone number of your voice mailbox

- 1 Select **Menu** > **Settings** and **Calling** > **Call mailbox**.
- 2 Select and hold a mailbox, and from the pop-up menu, select **Change number**.
- 3 Enter the number (obtained from your network service provider), and select **OK**.

Divert calls to your voice mailbox or another phone number

If you cannot answer your calls, you can divert incoming calls to your voice mailbox or another phone number.

Select **Menu** > **Settings and Calling** > **Call divert** > **Voice calls**.

Call divert is a network service. For details, contact your service provider.


Divert all voice calls to your voice mailbox

Select **All voice calls** > **Activate** > **To voice mailbox**.

Divert all voice calls to another phone number

- 1 Select **All voice calls** > **Activate** > **To other number**.
- 2 Enter the number, or select **Find** to use a number saved in your contacts list.

Several diverting options, such as **If busy** and **If not answered** can be active at the same time.

In the home screen,  indicates that all calls are diverted.

Call barring and call diverting cannot be active at the same time.

Prevent making or receiving calls

Sometimes you may want to restrict the calls that can be made or received with your device. With call barring (network service), you can, for example, restrict all outgoing international calls or incoming calls when you are abroad.

Select **Menu** > **Settings and Calling** > **Call barring**.

To modify the settings, you need the barring password from your service provider.

Prevent making calls

- 1 If an internet call service is installed, select **Cellular call barring**.
- 2 To prevent making any calls or international calls, select **Outgoing calls** or **International calls**. To prevent making international calls, but allow calls to your home country, select **International calls except to home country**.
- 3 Select **Activate**. Call barring affects all calls, including data calls.

Prevent receiving calls

- 1 If an internet call service is installed, select **Cellular call barring**.
- 2 To prevent receiving any calls or international calls when you are abroad, select **Incoming calls** or **Incoming calls when roaming**.
- 3 Select **Activate**.

Prevent anonymous internet calls

Select **Internet call barring** > **Anonymous call barring** > **On**.

Allow calls only to certain numbers

With the fixed dialling service, you can restrict calls, and only allow calls to certain phone numbers. For example, you can allow your children to call only family members or other key numbers.

Select **Menu > Contacts and Options > SIM numbers > Fixed dial contacts**.

Not all SIM cards support the fixed dialling service. You need your PIN2 code from your service provider.

Activate fixed dialling

Select **Options > Activate fixed dialling**. Enter the PIN2 code.

Select the people to whom calls are allowed

- 1 Select **Options > New SIM contact**.
- 2 Enter the PIN2 code.
- 3 Enter the contact name and phone number to which calls are allowed, and select **Done**. To add a contact from the contacts list to the fixed dialling list, select **Add from Contacts** and a contact.

To send a text message to a SIM contact while the fixed dialling service is active, you need to add the text message centre number to the fixed dialling list.

Video sharing

About video sharing

With video sharing (network service), you can share live or recorded video from your device to another compatible device, during a voice call.

When you activate video sharing, the loudspeaker is automatically activated. If you do not want to use the loudspeaker, you can use a compatible headset.

Video sharing requirements

To share video, both you and the recipient must:

- Be in a 3G network. If either of you move outside the 3G network, the voice call continues.
- Have the video sharing feature activated.
- Have person-to-person connections set up.

For more information on the service, 3G network availability, and fees associated with using this service, contact your service provider.

Set up video sharing

To set up video sharing, you need person-to-person and 3G connection settings.

A person-to-person connection is also known as a Session Initiation Protocol (SIP) connection. The SIP profile settings must be configured in your device before you can use video sharing. Contact your service provider for the SIP profile settings, and save them to your device. Your service provider may send you the settings in a configuration message or give you a list of the needed parameters.

Set up a person-to-person connection

- 1 Select **Menu** > **Settings and Connectivity** > **Admin. settings** > **SIP settings** and a SIP profile.
- 2 Enter the needed SIP profile settings.

Modify video sharing settings

Select **Menu** > **Settings and Connectivity** > **Video sharing**.

Use a 3G connection

For details about networks, contact your service provider.

Add a SIP address to a contact

- 1 Select **Menu** > **Contacts**.
- 2 Select a contact or create a new contact.
- 3 Select **Options** > **Edit**.
- 4 Select **Options** > **Add detail** > **Share video**.
- 5 Enter the SIP address in the format `username@domainname` (you can use an IP address instead of a domain name).

If you do not know the SIP address for the contact, you can use the phone number of the recipient, including the country code, to share video (if supported by the network service provider).

Share live or recorded video

During an active voice call, select **Options** > **Share video**.

- 1 To share live video, select **Live video**.
To share a video, select **Video clip** and the desired video. Your device checks if the video must be converted. If needed, the video is automatically converted.
- 2 Select the desired SIP address or phone number that is stored in the contact card for the recipient. If the SIP address or phone number is not available, manually enter the details, and select **OK**. If entering a phone number, you need to enter the country code. The invitation is sent to the SIP address.

If you access another application while sharing a video, the sharing is paused.

Continue sharing

In the home screen, select **Options** > **Resume video sharing**.

Stop sharing video

Select **Stop**. To end the voice call, select . When you end the call, video sharing also ends.

Save the live video you shared

Select **Yes** when prompted.

Accept a video sharing invitation

Select **Yes**. Video sharing begins automatically.

Contacts

About Contacts



Select **Menu** > **Contacts**.


With Contacts, you can save and organise your friends' phone numbers, addresses, and other contact information.

Save phone numbers and mail addresses


You can save your friends' phone numbers, mail addresses, and other information to your contacts list.

Select **Menu** > **Contacts**.

Add a contact to the contacts list

- 1 Select **Options** > **New contact**.
- 2 Select a field, and enter the details. To close the text input, select .

Edit contact information

- 1 Select a contact.
- 2 Open the contact card tab .
- 3 Select a contact detail.

Add details about a contact

Select a contact and **Options** > **Edit** > **Options** > **Add detail**.

Save a number from a received call or message

Have you received a call or a message from a person whose phone number is not yet saved in the contacts list? You can easily save the number in a new or existing contact list entry.

Save a number from a received call

- 1 Select **Menu** > **Applications** > **Log**.
- 2 Select **Recent calls** > **Received calls**.
- 3 Select and hold a phone number, and from the pop-up menu, select **Save to Contacts**.
- 4 Select whether you want to create a new contact list entry or update an existing one.

Save a number from a received message

- 1 Select **Menu** > **Messaging**.
- 2 Select **Inbox** and a message.
- 3 Select the phone number and **Save to Contacts**.
- 4 Select whether you want to create a new contact list entry or update an existing one.

Contact your most important people quickly

You can set your most important contacts as favourites. Your favourites are at the top of the contacts list, so you can contact them quickly.

Select **Menu** > **Contacts**.

Set a contact as a favourite

Select and hold a contact, and from the pop-up menu, select **Add to favourites**.

Remove a contact from favourites

Select and hold a contact, and from the pop-up menu, select **Remove from favourites**. The contact is not deleted from your standard contacts list.

Add a picture for a contact

Want to see quickly who is calling you? Add a picture for a specific contact.

Select **Menu** > **Contacts** and a contact.

- 1 Select the icon next to the contact's name and **Add image**.
- 2 Select a picture from Photos.

Change or remove a picture

Select and hold the picture, and from the pop-up menu, select **Change image** or **Remove image**.

The contacts must be stored in your device memory. To check which memory is in use, select **Options > Settings > Contacts to display**.

Set a ringing tone for a specific contact

Want to be able to hear that a particular person is calling you? You can set a ringing tone specifically for that person.

Select **Menu > Contacts**.

Set a ringing tone for a contact

- 1 Select a contact and **Options > Edit**.
- 2 Select the Ringing tone field and a ringing tone.

Set a ringing tone for a contact group

- 1 Open the Groups tab.
- 2 Select and hold the title of a group, and from the pop-up menu, select **Ringing tone**.
- 3 Select a ringing tone from the list.

The ringing tone only applies to the members of the group at the time that the ringing tone is set.

Send your contact information using My Card

My card is your electronic business card. With My card, you can send your contact information to others.

Select **Menu > Contacts**.

Send your contact information as a business card

Select and hold **My card**, and from the pop-up menu, select **Send as business card**.

Edit your contact information in My Card

Select **My card**, and the detail to edit.

Create a contact group

When you have created contact groups, you can send a message to several people at the same time. For example, you can assign the members of your family to one group.

Select **Menu** > **Contacts**.

- 1 Open the Groups tab.
- 2 Select **Options** > **New group**.
- 3 Enter a name for the group, and select **OK**.
- 4 Select the group and **Options** > **Add members**.
- 5 To mark the contacts you want to add to the group, select them.

Send a message to a group of people

Would you like to send a message to all your family members quickly? If you have assigned them to a group, you can send a message to all of them at the same time.

Select **Menu** > **Contacts**.

- 1 Open the Groups tab.
- 2 Select and hold a group title, and from the pop-up menu, select **Create message**.

Copy contacts from the SIM card to your device

If you have contacts stored on your SIM card, you can copy them to your device. You can add more details to contacts that are stored on your device, such as alternative phone numbers, addresses, or a picture.

Select **Menu** > **Contacts**.

Select **Options** > **SIM numbers** > **Copy all to phone**.

Tip: If you now have a contact twice in your contacts list, select **Options** > **Settings** > **Contacts to display**, and clear the **SIM memory** check box.

Back up your contacts to Ovi by Nokia

If you back up your contacts to Ovi by Nokia, you can easily copy your contacts to a new device. If your device is stolen or damaged, you can still access your contacts list online.

Select **Menu** > **Contacts and Options** > **Ovi sync**.

If you allow automatic synchronisation, all the changes you make in the contacts list are automatically backed up to Ovi by Nokia.

You need a Nokia account to use Ovi. If you do not have an account, create one at www.ovi.com. You are also prompted to create an account, if you access any Ovi service using your device.

If you use Ovi Sync to automatically synchronise your contacts with Ovi, do not allow contact synchronisation with any other service as there may be conflicts. Ovi Sync for

contacts is not available if you have activated contacts synchronisation in Mail for Exchange.

Messaging

About Messaging



Select **Menu** > **Messaging**.

You can send and receive various kinds of messages:



- Text messages
- Audio messages
- Multimedia messages that contain pictures and videos
- Group messages

Messaging requires network support.

Send a message

With text and multimedia messages, you can quickly contact your friends and family. In a multimedia message, you can attach pictures, videos, and sound clips that you want to share.

Select **Menu** > **Messaging**.

- 1 Select **New message**.
- 2 To select recipients from the contacts list, select the **To** title. To enter the recipient's phone number manually, enter the number in the **To** field.
- 3 To add an attachment, select .
- 4 Select .

Sending a message with an attachment may be more expensive than sending a normal text message. For more information, contact your service provider.

You can send text messages that are longer than the character limit for a single message. Longer messages are sent as two or more messages. Your service provider may charge accordingly.

Characters with accents, other marks, or some language options, take more space, and limit the number of characters that can be sent in a single message.



If the item you inserted in a multimedia message is too large for the network, the device may automatically reduce the size.

Only compatible devices can receive and display multimedia messages. Messages may look different in different devices.

Send an audio message

You can record a sound clip, such as a birthday song, and send it to your friend as an audio message.


Select **Menu** > **Messaging**.

- 1 Select **Options** > **Create message** > **Audio message**.
- 2 To record the message, select .
- 3 To select the recipient from the contacts list, select the **To** title. To enter the recipient's phone number manually, enter the number in the **To** field.
- 4 Select .


Receive messages

When you receive a message, you can open it directly from the home screen. Later, you can find the message in the **Conversations** folder or in the **Inbox** folder in **Messaging**.

Select **Menu** > **Messaging**.

When you receive a message,  and **1 new message** are displayed in the home screen. To open the message, select **Show**. By default, the message is opened in the **Conversations** view.


Reply to a received message in the Conversations view

Select the text input field at the bottom of the display, write a message, and select .


Open a message in the Inbox folder

Select **Inbox** and a message.

Reply to a received message in the Inbox view

Open a message, and select .

Forward a message in the Inbox view

Open a message, and select .

Save a received multimedia item

Select and hold the item, and from the pop-up menu, select **Save**. The item can be viewed in the corresponding application. For example, to view saved pictures, open **Photos**.


View a conversation

You can see the messages you have sent to and received from a particular contact from a single view, and continue the conversation from that view.

Select **Menu > Messaging**.

Select **Conversations** and a contact. All messages sent to and received from that contact are displayed.

Reply to a message in a conversation

- 1 Open the conversation.
- 2 Select the text input field at the bottom of the display, and write a message.
- 3 To add attachments or more recipients, select **Options > Add**.
- 4 To send the message, select .

When you send a new message, it is added to the current conversation. If no conversation exists, a new conversation is started.

When you open a received message from the home screen, by default, the message opens in the Conversations view. If you want messages to open in the Inbox view, select **Options > Message view > Inbox**.

Listen to a text message

You can set your device to read your text messages aloud.

- 1 Select **Menu > Messaging**.
- 2 Select **Inbox**.
- 3 Select and hold a message, and from the pop-up menu, select **Listen**.

Select **Menu > Settings > Phone > Speech**.


Change the language

Select **Language** and a language.

Download an additional language

Select **Options > Download languages**.

Change the voice

Select . To preview a voice, select and hold the voice, and select **Play voice**.

Change language

You can change the device language and the language in which you write your messages and mails. You can also activate predictive text input.

Select **Menu** > **Settings and Phone** > **Language**.

Change the device language

Select **Phone language**.

Change the writing language

Select **Writing language**.

Activate predictive text input

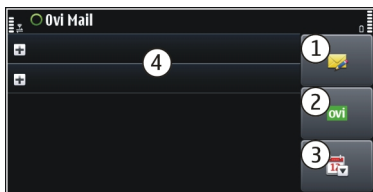
Select **Predictive text**.

Mail

About Mail

 Select **Menu** > **Applications** > **Mail**.


You can add several mailboxes and access them directly from your home screen. In the main mail view, you can switch from one mailbox to another.



- 1 Write a mail.
- 2 Switch between your mailboxes.
- 3 Sort your mail by, for example, date.
- 4 Mail in current mailbox.

Mail contains interactive elements. Select and hold, for example, a mail to view a pop-up menu.

Get a free mail account from Ovi by Nokia

 With Nokia's Ovi Mail, you can use your device or PC to access your mail. The anti-spam protection helps keep your mailbox in order, and the virus protection increases security.

- 1 Select **Menu** > **Applications** > **Mail**.
- 2 Select **New** > **Start** > **Ovi Mail** and **Sign up now**.

Use your PC to access your mail account

Go to www.ovi.com, and sign in.

Add a mailbox

You can add several mailboxes to your device.


Select **Menu > Applications > Mail**.

Add a mailbox

Select **New**, and follow the instructions.

To get a free Ovi Mail account from Nokia, select **Ovi Mail** and **Sign up now**.

Add a mail widget to the home screen

- 1 In the home screen, tap and hold an empty area.
- 2 Select  and the desired widget from the list.

Delete a mailbox

- 1 Select **Menu > Applications > Mail**.
- 2 Select **Options > Delete mailbox** and the mailbox.

Read mail

You can use your device to read and reply to mail.

Select **Menu > Applications > Mail**.

Read a mail

Select a mail. To zoom in or out, pinch the screen.



Open or save an attachment

Select the attachment, and from the pop-up menu, select the appropriate option. If there is more than one attachment, you can save them all at once.

Reply to a mail

Select **Options** > **Reply**.

Forward a mail

Select **Options** > **Forward**.




Tip: If there is a web address in a mail and you would like to open the address in the device browser, or add it to your bookmarks, select the address, and from the pop-up menu, select the desired option.

Tip: To open the next or previous mail, use the arrow icons.

Send a mail

You can use your device to write and send mail, and attach files to your mail.

Select **Menu** > **Applications** > **Mail**.

- 1 Select .
- 2 To add a recipient from your contacts list, select the To, Cc, or Bcc icon. To enter a mail address manually, select the To, Cc, or Bcc field.
- 3 To add an attachment to the mail, select .
- 4 To send the mail, select .

Open mail from the home screen

You can have several mail widgets in the home screen, depending on your device. Each mail widget contains one mailbox. In the widget, you can see if you have received new mail and the number of unread mails.

Add a mail widget to the home screen

In the home screen, select **New mailbox**, and follow the instructions.

Add another mail widget to the home screen

Tap and hold the home screen, and select , and the desired widget from the list.

Open a mail

In the mail widget, select a mail.

Internet

About Web



Select **Menu** > **Web**.

With the Web application, you can view web pages on the internet.

To browse the web, you must have an internet access point configured in your device and be connected to a network.

Browse the web

Select **Menu > Web**.

Tip: If you do not have a flat-rate data plan from your service provider, to save data costs in your phone bill, you can use a wireless local area network (WLAN) to connect to the internet.

Go to a web page

From the toolbar, select , and enter a web address.

Zoom in or out

Place two fingers on the screen, and slide your fingers together or apart.

A cache is a memory location that is used to store data temporarily. If you have, or have tried to, access confidential information or a secure service, requiring passwords, clear the cache after each use.



Empty the cache

Select **Options > Clear privacy data > Cache**.


Add a bookmark

If you visit the same websites all the time, add them to your Bookmarks view, so you can easily access them.

Select **Menu > Web**.

While browsing, select  > .


Go to a bookmarked website while browsing

Select  and a bookmark.

Subscribe to a web feed

You don't have to visit your favourite websites regularly to keep up with what's new on them. You can subscribe to web feeds and get links to latest content automatically.

Select **Menu > Web**.

Web feeds on web pages are usually indicated with . They are used to share, for example, the latest news headlines or blog entries.

Subscribe to a feed

Go to a blog or web page that contains a web feed, and select **Options** > **Subscribe to web feeds**.

Manually update a feed

In the Web feeds view, select the feed.

Set a feed to automatically update

In the Web feeds view, select and hold the feed, and from the pop-up menu, select **Edit** > **Automatic updates**.

Discover nearby events

Are you looking for interesting things to do near your current location? With Here and now, you can get information about, for example, the weather, events, cinema times, or restaurants nearby.

Select **Menu** > **Web**.

- 1 Select **Here and now**.
- 2 Browse the available services, and for more information, select the service.

Some content is generated by third parties and not Nokia. The content may be inaccurate and is subject to availability.

Some services may not be available in all countries, and may be provided only in selected languages. The services may be network dependent. For more information, contact your network service provider.

Using the service or downloading content may cause transfer of large amounts of data, which may result in data traffic costs.

Social networks

About Social



Select **Menu** > **Social netw.** and sign in to your relevant social networking services.

To enhance your social networking experience, get Social on Ovi — all you need is a Nokia account. When signed in to social networking services through Ovi by Nokia, you can do the following:

- See your friends' status updates from multiple services in one view
- Post your own status update to multiple services at the same time
- Instantly share pictures you take with the camera
- Share videos with your friends
- Link your online friends' profiles to their contact information in your device
- Add your location information to your status update
- Add events from the service calendar to your device calendar

Only those features that are supported by the social networking service are available.

Using social networking services requires network support. This may involve the transmission of large amounts of data and related data traffic costs. For information about data transmission charges, contact your service provider.

The social networking services are third party services and not provided by Nokia. Check the privacy settings of the social networking service you are using as you may share information with a large group of people. The terms of use of the social networking service apply to sharing information on that service. Familiarise yourself with the terms of use and the privacy practices of that service.

See your friends' status updates in one view

When you are signed in to social networking services through the Social application, you can see your friends' status updates from all those services in a single view. You do not have to switch between different applications to see what everyone is up to.

Select **Menu** > **Social netw..**

- 1 Sign in to Ovi by Nokia with your Nokia account user name and password.
- 2 Select a service, and sign in.
- 3 Select **Add social network**.
- 4 Select another service, and sign in.
- 5 Select **All Activity**.

Select the services included in the view

Select the account switcher icon, next to the status update field. It indicates which services are included in the view.

Post your status to social networking services

With the Social application, you can post your status update to social networking services.

Select **Menu** > **Social netw..**

Write your status update in the text field.

Link your online friends to their contact information

You can link your online friends' profiles from social networking services to their contact information in your device. After linking, you can view their contact information directly from the Social application, and see their latest status updates in your contacts list.

Select **Menu** > **Social netw..**

- 1 Select an online friend's profile picture.
- 2 From the pop-up menu, select **Link Profile to Contact**.
- 3 From your contacts list, select the contact to which to link the profile.

See your friends' status updates on the home screen

When you sign in to social networking services through Ovi by Nokia, you can see your online friends' status updates directly on the home screen.

Browse updates on the home screen

When you are signed into a service, you can see updates in the Social widget.


Open the Social application from the home screen

Select the Social widget. If you are signed in, the status updates view opens. If you are not signed in, the sign-in view opens.


Upload a picture or video to a service

Use the Social application to upload pictures and videos to social networking services.

Select **Menu** > **Social netw..**

- 1 Select .
- 2 Select whether to upload a picture or a video.
- 3 To mark the items to upload, select the items.
- 4 If uploading a single picture, you can add a caption and a tag with a comment to a particular section of the picture.
To upload a video, the feature needs to be supported by the social networking service. The maximum file size for videos is 4 MB.

Take a picture and upload it

- 1 Select .
- 2 Select the option for uploading a picture from the camera.
- 3 Take a picture.

4 Add a caption and a tag with a comment to a particular section of the picture.

Share your location in your status update

With the Social application, you can let your friends know where you are, so they can find you.

Select Menu > Social netw..

- 1 Select the text input field at the top of the display.
- 2 Add your location. The device uses GPS to determine your current location, and searches for landmarks near you.
- 3 If several landmarks are found, select one from the list.

Location sharing is available only if it is supported by the service.

Before sharing your location, always carefully consider with whom you are sharing. Check the privacy settings of the social networking service you are using, as you might share your location with a large group of people.

The applicable terms of use of the social networking service may apply to sharing your location to the service. Familiarise yourself with the terms of use and the privacy practices of the service, and use appropriate consideration before disclosing your location data to others or viewing the location of others.

Contact a friend from a social networking service

When commenting your friend's status is not enough, you can call or send a message to the friend.

Select Menu > Social netw..

- 1 Select a friend's profile picture.
- 2 From the pop-up menu, select **View contact info**.
- 3 Select a communication method.

This feature is available if you have linked your online friends to their contact information in your device.

The available communication methods vary. To call or send a text message to a friend, the feature needs to be supported by the service.

Add an event to your device calendar

When responding to invitations to events in a social networking service, you can add the events to your device calendar, so you can view upcoming events even if you are not online.

Select **Menu** > **Social netw.** and a service, and sign in.

- 1 Select an invitation to an event.
- 2 Add the event to your device calendar.

This feature is available only if supported by the service.

Camera

About Camera



Select **Menu** > **Applications** > **Camera**.

Why carry a separate camera if your device has all you need for capturing memories? With the Camera application, you can easily take pictures or record videos. You can later use your device to view or edit the pictures and videos, share them on the internet, or send them to compatible devices.

Take a picture

Press and hold .

Press . Do not move the device before the picture is saved and the final picture displayed.



Save location information to your pictures and videos

If you sometimes struggle to remember exactly where you were when you took a particular picture or video while hiking or travelling, you can set your device to automatically record the location.

Press and hold .


Activate the location recording feature


Select **Options** > **Settings** > **Save location info** > **Yes**.

It may take several minutes to obtain the coordinates of your location. The availability and quality of GPS signals may be affected by your location, buildings, natural obstacles, and weather conditions. If you share a file that includes location information, also the

location information is shared, and your location may be visible to third parties viewing the file. This feature requires network service.

Location information indicators:

 — Location information is unavailable. Location information may not be saved to pictures or videos.

 — Location information is available. Location information is saved to pictures or videos.


Location information can be attached to an image or a video clip if location coordinates can be determined via network and GPS. If you share an image or a video clip which has location information attached, the location information is visible to others that view the image or the video clip. You can deactivate geotagging in the camera settings.

Take a picture in the dark

If you activate night mode, you can take pictures even when light levels are low.

Select **Menu > Applications > Camera**.



Activate night mode

- 1 Select  > **Scene mode**.
- 2 To use the flash, select **Night portrait**. If you do not want to use the flash, select **Night**.

Picture tips


Select **Menu > Applications > Camera**.




When taking a picture, note the following:

- Use both hands to keep the camera steady.
- When you zoom in, the image quality may decrease.
- The camera activates battery saving mode after about a minute of inactivity. To activate the camera again, press  briefly.
- You can set the user defined scene to be used as the default scene every time you open the Camera application. Select  > **Scene mode > User defined > Edit**. Modify the settings, and select **Set as default scene mode > Yes**.
- Keep a safe distance when using the flash. Do not use the flash on people or animals at close range. Do not cover the flash while taking a picture.

Record a video

Besides taking pictures with your device, you can also capture your special moments as videos.

Press and hold .

- 1 To switch from image mode to video mode, if necessary, select .
- 2 To start recording, press . A red record icon is displayed.
- 3 To pause recording, select **Pause**. If you pause recording and do not press any key within one minute, the recording stops.
To zoom in or out, use the volume keys.
- 4 To stop recording, press . The video is automatically saved in Photos.

Send a picture

You can send pictures to your friends as a multimedia or mail message, or through Bluetooth connectivity.

- 1 Take a picture.
- 2 Select **Options** > **Send**.
- 3 Select the desired sending method.

Your pictures and videos

About Photos



Select **Menu** > **Photos**.

The Photos application is the place from where you can view all pictures and videos on your device. You can easily watch videos, or browse through pictures, and print out the best shots.

You can also view the pictures and videos on a compatible TV.

To manage your media files more effectively, add tags to the files, or organise them in categories.

View pictures and videos

Select **Menu** > **Photos**.

Browse the pictures and videos

Swipe up or down.

Browse pictures in full screen mode

Swipe left or right.

View a picture in full screen mode

Select the picture, and turn your device to landscape mode.

Zoom in or out

Place two fingers on the screen, and to zoom in, slide your fingers apart. To zoom out, slide your fingers together.



View your pictures as a slide show

Select a picture and **Options** > **Slide show** > **Play**. The slide show starts from the selected picture.

Play a video

Select a video.

Pictures and videos can also be sent to you from a compatible device. To view a received picture or video later in Photos, you must first save it.

Edit the pictures you have taken



With Photo editor, you can add effects, text, clip art, or frames to your pictures.

Select **Menu** > **Media** > **Photo editor** and a picture.

- 1 To insert effects, select the desired option from the extended toolbar.
- 2 To save the edited picture, select **Options** > **Save**. The edited picture does not replace the original picture.

To later view your edited pictures, select **Menu** > **Photos**.

Video editor

About Video Editor

With Video editor, you can combine pictures and videos with sounds, effects, and text, and easily turn them into short movies or slideshows.



Select **Menu** > **Applications** > **Video editor**.

The following codecs and file formats are supported: MPEG-4, H.263, H.263 BL, WMV, JPEG, PNG, BMP, GIF, MP3, AAC/AAC+/eAAC+, WAV, and AMR-NB/AMR-WB.

Save the sound files that you want to use in a movie to the **Sound files** folder on your device.

You cannot add a DRM protected sound file to a movie.

Create a movie

With Storyboard, you can easily create short movies from videos and pictures.

Select **Menu > Applications > Video editor**.

- 1 Select **Storyboard**.
- 2 To add videos and pictures to your movie, select **Select media**. To view the files you have selected, swipe right or left.
- 3 To add transitions between videos and pictures, select **+**.
- 4 To activate editing mode, select a video or picture. In editing mode, you can cut the length of the video or define how long a picture is displayed.
- 5 Select the sounds to play in the background.
- 6 To add text or subtitles to your movie, select **Add text**.
- 7 Save your movie.

Create a slideshow

The Video editor application contains templates for different occasions. You can use them to create slideshows of events, such as anniversaries or parties.

Select **Menu > Applications > Video editor**.

- 1 Select **Slide show**.
- 2 Select a template to use for the slideshow. When you select a template, a preview is displayed.
- 3 Select the pictures to use.
- 4 Select the sounds to play in the background.
- 5 Add a title.
- 6 Preview and save your slideshow.

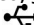
Print a picture you have taken

You can print your pictures directly using a compatible printer.

- 1 Use a compatible USB data cable to connect your device to a printer in Media transfer mode.
- 2 Select the picture to print.
- 3 Select **Options > Print**.

- 4 To use the USB connection to print, select **Print** > **Via USB**.
- 5 To print the picture, select **Options** > **Print**.

Tip: You can also use a Bluetooth printer. Select **Print** > **Via Bluetooth**. Change the selected printer to Bluetooth, and follow the instructions on the display.

Tip: When the USB cable is connected, you can change the USB mode. In the top right corner of the browsing view, select  > **USB**.

View pictures and videos on a TV

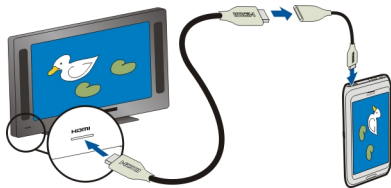
Connect your device to a TV using HDMI

You can use a compatible HDMI adapter and a standard HDMI cable (cable available separately) to connect your device to a TV or compatible. Pictures and videos retain the original video and audio quality, even supporting surround sound.

- 1 Connect the HDMI adapter to the HDMI connector of your device.



- 2 Connect an HDMI cable to the adapter, and then to the HDMI connector of a TV. You may need to manually select the HDMI input on the TV.



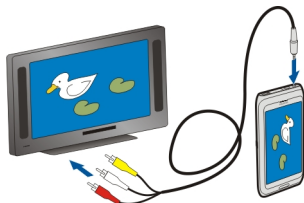
- 3 Select a picture or video to view on the TV.

Connect your device to a TV using a Nokia Video Connectivity Cable

You can view pictures and videos on a compatible TV, making it easier for you to show them to your family and friends.

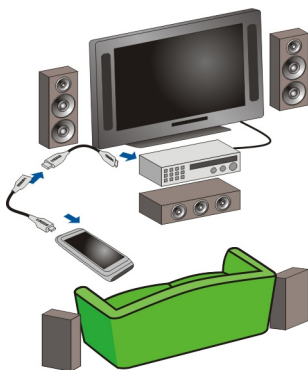
You need to use a Nokia Video Connectivity Cable (available separately), and may need to modify the TV-out settings and aspect ratio. To modify the TV-out settings, select **Menu > Settings and Phone > Accessories > TV-Out**.

- 1 Connect a Nokia Video Connectivity Cable to the video input of a compatible TV. The colour of the plugs must match the colour of the sockets.
- 2 Connect the other end of the Nokia Video Connectivity Cable to the Nokia AV Connector of your device. You may need to select **TV-Out cable** as the USB mode.
- 3 Browse for the file you want to view.



Connect your device to your home theatre

You can use your device with home theatre systems. With compatible home theatres, you can enjoy HD videos with Dolby™ Digital Plus 5.1 multichannel audio for an immersive surround sound experience.



- 1 Connect the HDMI adapter to the HDMI connector of your device.



- 2 Connect an HDMI cable (available separately) to the adapter, and then to the HDMI connector of your home theatre.

The home theatre needs to support the HDMI 1.3 standard and be able to pass through video to your TV over HDMI. Your device decodes Dolby Digital Plus, and outputs PCM audio to your home theatre.

- 3 To set the home theatre to use the respective HDMI input, see the user instructions of your home theatre.
- 4 Play a video on your device.

The maximum supported video resolution is 1280x720 (720p), and your device does not support files that are larger than 4 GB.

Example: An MP4 or MKV video that has the following properties:

- Video: AVC 1916kbps, 24fps, High Profile Level 3.1, 3 ref. frames
- Audio: Dolby Digital Plus E-AC-3, 384kbps, 6 channels

Videos and TV

Videos

About Videos



With the Videos application, you can watch videos on your device.

Tip: Get new videos from Ovi Store. To learn more about Ovi Store, go to www.ovi.com.

Using a packet data access point to download a video may involve the transmission of large amounts of data through your service provider's network. For information about data transmission charges, contact your service provider.

Play a video

Select **Menu** > **Applications** > **Videos & TV** > **Videos**.

Select the video.

Use the video player controls

Tap the screen.

Copy a video between your device and PC

Do you have videos on your computer that you want to watch on your device? Or do you want to copy videos that you have recorded on your device to your computer? Use a USB data cable to copy videos between your computer and your device.

- 1 Use a compatible USB data cable to connect your device to your computer.
- 2 Open Nokia Ovi Suite on your computer, and follow the displayed instructions.

Watch Web TV

With on-demand Web TV, you can keep up with the news and catch up on the latest episodes of your favourite TV series.

Select **Menu** > **Applications** > **Videos & TV** and a service.

To stream content over the air using Web TV, you need to use a 3G, 3.5G, or WLAN connection. Using Web TV services may involve the transmission of large amounts of data. For information about data transmission charges, contact your network service provider.

The selection of pre-installed Web TV services depends on the country and network service provider. The content of the Web TV services varies by service.

- 1 To browse Web TV content, swipe the screen.
- 2 To start playback, select the thumbnail image.
- 3 To show or hide the controls during playback, tap the screen.
- 4 To adjust the volume, use the volume keys.

Add a Web TV widget to your home screen

Tap and hold the home screen, and select  and the desired Web TV service.

Find more Web TV services

To download Web TV services from Nokia's Ovi Store, select **Get more**. Downloaded services are saved in the Applications folder, but you can move them to another folder, such as a dedicated Web TV folder.

To learn more about Ovi Store, go to www.ovi.com.

Music and audio

Music player

About Music player

 Select **Menu** > **Music** > **Music player**.

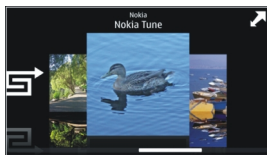
With the Music player application, you can listen to music and podcasts while on the move.

Tip: Get more music from Ovi Music. Select **Menu** > **Music** > **Ovi Music**. To learn more about Ovi, go to www.ovi.com.


Play music

Select **Menu** > **Music** > **Music player**.

- 1 Select **Options** and the desired view. You can browse songs by song or album. In the album view, to browse the album covers, turn your device so it is horizontal, and swipe left or right.





- 2 Select a song or album.

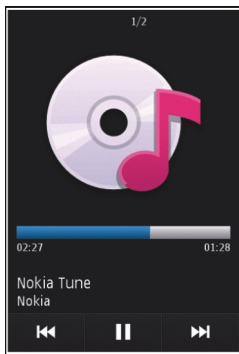
Tip: To listen to the songs in a random order, select .

Pause and resume playback

To pause playback, select ; to resume, select .

Fast-forward or rewind a song

Select and hold  or .



Tip: When listening to music, you can return to the home screen, leaving Music player application playing in the background.

Create a playlist

Want to listen to different music for different moods? With playlists, you can create selections of songs to play in a specific order.

Select **Menu** > **Music** > **Music player**.

- 1 Select **Options** > **Playlists**.
- 2 Select **Options** > **New playlist**.
- 3 Enter a name for the playlist, and select **OK**.
- 4 Select the songs to add to the playlist, in the order you want them to play.

Add a song to a playlist

Select and hold the song, and from the pop-up menu, select **Add to playlist**.

Remove a song from playlist

In the playlist view, select and hold the song, and from the pop-up menu, select **Remove**.

This does not delete the song from the device; it only removes it from the playlist.

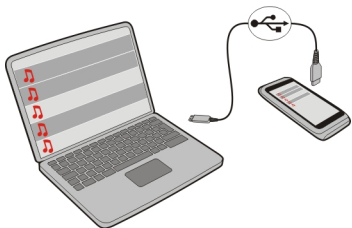
Play a playlist

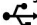
Select **Options** > **Playlists** and the playlist.

Tip: Music player automatically creates a playlist for the most played songs, recently played songs, and recently added songs.

Copy music from your PC

Do you have music on your PC that you want to listen on your device? Nokia Ovi Player is the fastest way to transfer music on your device, and you can use it to manage and synchronise your music collection.




- 1 Use a compatible USB data cable to connect your device to your computer.
- 2 On your device, select the notification area in the top right corner, and select  > **USB** > **Media transfer**.
- 3 On your computer, open Nokia Ovi Player. For more information, see the Ovi Player help.

Download the latest version of Ovi player from www.ovi.com.

Some music files can be protected by digital rights management (DRM) and cannot be played on more than one device.

Buy music from Nokia's Ovi Music

 With Nokia's Ovi Music, you can purchase and download songs to your device and your computer. To manage your music collection and downloads, you can install Nokia Ovi Player on your compatible PC, or use your internet browser to download music.

To start discovering music, select **Menu** > **Music** > **Ovi Music** or go to www.ovi.com.

Protected content

Digital rights management (DRM) protected content, such as pictures, videos, or music, comes with an associated licence that defines your rights to use the content.

You can view the details and status of the licences, and reactivate and remove licences.

Manage digital rights licences

Select **Menu** > **Settings** > **Phone** > **Phone management** > **Security settings** > **Protected content**.

Record sounds


You can use your device recorder to record sounds from nature, such as birds singing, as well as voice memos. You can send the recorded sound clips to your friends.

Select **Menu** > **Office** > **Recorder**.

Record a sound clip

Select .

Stop recording

Select . The sound clip is automatically saved to the Sound files folder in the File manager application.

Send a recorded sound clip as an audio message

Select **Options** > **Send**.

FM radio

About FM radio



Select **Menu** > **Music** > **Radio**.

You can listen to FM radio stations using your device - just plug in a headset, and select a station!



To listen to the radio, you need to attach a compatible headset to the device. The headset acts as an antenna.



Find and save radio stations



Search for your favourite radio stations, and save them, so you can easily listen to them later.

Select **Menu > Music > Radio**.

From the toolbar, select  > .

To find radio stations, you can use the automatic scanning, or you can set a frequency manually. The first time you open the FM radio, the application automatically searches for radio stations audible at your location.

Scan for all available stations

- 1 From the toolbar, select .
- 2 To save all found stations, from the toolbar, select . To save a single station, select and hold the station title, and from the pop-up menu, select **Save**.

Set a frequency manually



- 1 From the toolbar, select  **Tune manually**.
- 2 Use the up and down arrow icons to enter a frequency.

Listen to the radio



You can enjoy your favourite FM radio stations on the go.

Select **Menu > Music > Radio**.



Listen to a saved station

From the toolbar, select  > , and select a station from the list.

Go to the next or previous saved station

Swipe right or left. Alternatively, select  or .

Scan for another available station

Swipe up or down. Alternatively, select and hold  or .

Listen to the radio using the loudspeaker

Select **Options** > **Activate loudspeaker**. You still need to have a headset attached.

You can make or answer a call while listening to the radio. The radio is automatically muted during an active call.

Tip: To search and buy music from Ovi Music, from the toolbar, select  > .

The quality of the radio broadcast depends on the coverage of the radio station in the area.



Reorder the list of saved stations

You can reorder the list of saved stations, so that your favourites are at the top.

Select **Menu** > **Music** > **Radio**.

The stations you have saved are listed in the Station list view.

Move a station on the list

- 1 From the toolbar, select  > .
- 2 Select and hold the station title, and from the pop-up menu, select **Move**.
- 3 Select the new place on the list.

Maps**Maps overview**

Select **Menu** > **Maps**.

Welcome to Maps.

Maps shows you what is nearby, helps you plan your route, and guides you where you want to go.

- Find cities, streets, and services.
- Find your way with turn-by-turn directions.

- Synchronise your favourite locations and routes between your mobile device and the Ovi Maps internet service.
- Check weather forecasts and other local information, if available.

Some services may not be available in all countries, and may be provided only in selected languages. The services may be network dependent. For more information, contact your network service provider.

Using the service or downloading content may cause transfer of large amounts of data, which may result in data traffic costs.

Almost all digital cartography is inaccurate and incomplete to some extent. Never rely solely on the cartography that you download for use in this device.




Some content is generated by third parties and not Nokia. The content may be inaccurate and is subject to availability.

My position

View your location and the map

See your current location on the map, and browse maps of different cities and countries.

Select **Menu > Maps and My position**.

 marks your current position, if available. When your device is searching for your position,  blinks. If your position is not available,  indicates your last known position.

If only cell ID based positioning is available, a red halo around the positioning icon indicates the general area you might be in. In densely populated areas, the accuracy of the estimate increases, and the red halo is smaller than in lightly populated areas.

Move on the map

Drag the map with your finger. By default, the map is oriented north.

View your current or last known location

Select .

Zoom in or out

Select + or -.

If you browse to an area not covered by the maps that are stored on your device and you have an active data connection, new maps are automatically downloaded.

Map coverage varies by country and region.

Map view




- 1 Selected location
- 2 Indicator area
- 3 Point of interest (for example, a railway station or a museum)
- 4 Information area

Change the look of the map

View the map in different modes, to easily identify where you are.

Select **Menu > Maps and My position**.

Select  and from the following:

Map view — In the standard map view, details such as location names or motorway numbers, are easy to read.

Satellite view — For a detailed view, use satellite images.

Terrain view — View at a glance the ground type, for example, when you are travelling off-road.

3D view — For a more realistic view, change the perspective of the map.

Landmarks — Display prominent buildings and attractions on the map.


Night mode — Dim the colours of the map. When travelling at night, the map is easier to read in this mode.

Download and update maps

To avoid mobile data transfer costs, download the latest maps and voice guidance files to your computer, and then transfer and save them to your device.

Use the Nokia Ovi Suite application to download the latest maps and voice guidance files to your compatible computer. To download and install Nokia Ovi Suite on your compatible computer, go to www.ovi.com.

Tip: Save new maps to your device before a journey, so you can browse the maps without an internet connection when travelling abroad.

To make sure your device does not use an internet connection, in the main menu, select  > **Internet** > **Connection** > **Offline**.

Use the compass


When the compass is activated, both the arrow of the compass and the map rotate automatically in the direction to which the top of your device is pointing.

Select **Menu** > **Maps and My position**.

Activate the compass

Select .

Deactivate the compass

Select  again. The map is oriented north.

The compass is active when there is a green outline. If the compass needs calibration, the outline of the compass is red or yellow.

Calibrate the compass

Rotate the device around all axes in a continuous movement until the outline of the compass turns green.



The compass has limited accuracy. Electromagnetic fields, metal objects, or other external circumstances may also affect the accuracy of the compass. The compass should always be properly calibrated.

About positioning methods

Maps displays your location on the map using GPS, A-GPS, WLAN, or cell ID based positioning.

The Global Positioning System (GPS) is a satellite-based navigation system used for calculating your location. Assisted GPS (A-GPS) is a network service that sends you GPS data, improving the speed and accuracy of the positioning.

Wireless local area network (WLAN) positioning improves position accuracy when GPS signals are not available, especially when you are indoors or between tall buildings.

With cell ID based positioning, the position is determined through the antenna tower your mobile device is currently connected to.

When you use Maps for the first time, you are prompted to define the internet access point to use to download map information, use A-GPS, or connect to a WLAN.

The availability and quality of GPS signals may be affected by your location, satellite positions, buildings, natural obstacles, weather conditions and adjustments to GPS satellites made by the United States government. GPS signals may not be available inside buildings or underground.

Do not use GPS for precise location measurement, and never rely solely on the location information provided by GPS and cellular networks.




Note: Using WLAN may be restricted in some countries. For example, in France, you are only allowed to use WLAN indoors. For more information, contact your local authorities.

Find places



Find a location

Maps helps you find specific locations and businesses.

Select **Menu** > **Maps** and **Search**.

- 1 Enter search words, such as a street address or postcode. To clear the search field, select .
- 2 Select **Submit**.
- 3 Select an item from the list of proposed matches.

The location is displayed on the map. To view the other locations of the search result list on the map, select one of the arrows beside the information area (6).

- 1 Select the search field, and enter search words, such as a street address or postcode.
- 2 Select . To clear the search field, select .
- 3 Select an item from the list of proposed matches.

The location is displayed on the map. To view the other locations of the search result list on the map, select one of the arrows beside the information area (6).

Return to the list of proposed matches

Select **List**.

Search for different types of nearby places

Select **Browse categories** and a category, such as shopping, accommodation, or transport.

If no search results are found, ensure the spelling of your search terms is correct. Problems with your internet connection may also affect results when searching online.

To avoid data transfer costs, you can also get search results without an active internet connection, if you have maps of the searched area stored on your device.

View location details

View more information about a specific location or place, such as a hotel or restaurant, if available.

Select **Menu > Maps and My position**.

View the details of a place

Select a place, its information area (6), and **Show details**.

Rate a place

Select a place, its information area (6), **Show details**, and the star rating. For example, to rate a place as being 3 out of 5 stars, select the third star. To rate a place, you need an active internet connection.

When you find a place that does not exist or contains inappropriate information or incorrect details, such as the wrong contact information or location, it is recommended that you report it to Nokia.

Report incorrect information

Select a place and its information area (i), and select **Show details** > **Report this Place** and the appropriate option. To report a place, you need an active internet connection.

The available options may vary.

Favourites

Save places and routes

Save addresses, places of interest, and routes, so they can be quickly used later.

Select **Menu** > **Maps**.

Save a place

- 1 Select **My position**.
- 2 Tap the location. To search for an address or place, select **Search**.
- 3 Tap the location's information area (i).
- 4 Select **Save place**.

Save a route

- 1 Select **My position**.
- 2 Tap the location. To search for an address or place, select **Search**.
- 3 Tap the location's information area (i).
- 4 To add another route point, select **Add to route**.
- 5 Select **Add new route point** and the appropriate option.
- 6 Select **Show route** > **Options** > **Save route**.

View your saved places and routes

Select **Favourites** > **Places** or **Routes**.

View and organise places or routes

Use your Favourites to quickly access the places and routes you have saved.

Group the places and routes into a collection, for example, when planning a trip.

Select **Menu** > **Maps** and **Favourites**.

View a saved place on the map

- 1 Select **Places**.
- 2 Go to the place.

3 Select **Show on map**.

To return to the list of saved places, select **List**.

Create a collection

Select **Create new collection**, and enter a collection name.

Add a saved place to a collection

- 1 Select **Places** and the place.
- 2 Select **Organise collections**.
- 3 Select **New collection** or an existing collection.


If you need to delete routes, go to the Ovi Maps internet service at www.ovi.com.

Send places to your friends

When you want to share place information with your friends, send these details directly to their devices.

Select **Menu > Maps and My position**.

Send a place to your friend's compatible device

Select a location on the map, tap the location's information area , and select **Send**.

Synchronise your Favourites


Plan a trip on your computer at the Ovi Maps website, synchronise the saved places and routes with your mobile device, and access the plan on the go.

To synchronise places or routes between your mobile device and the Ovi Maps internet service, you need to be signed in to your Nokia account.

Synchronise saved places and routes

Select **Favourites > Synchronise with Ovi**. If you do not have a Nokia account, you are prompted to create one.

Set the device to synchronise Favourites automatically

Select  **> Synchronisation > Synchronisation > At start-up and shut-d..** The device starts the synchronisation when you open or close the Maps application.

Synchronising requires an active internet connection, and may involve the transmission of large amounts of data through your service provider's network. For information about data transmission charges, contact your service provider.

To use the Ovi Maps internet service, go to www.ovi.com.

Share location

Publish your current location to Facebook, together with text and a picture. Your Facebook friends can see your location on a map.

Select **Menu > Maps and Share loc.**

To share your location, you need a Nokia account and a Facebook account.

- 1 Sign in to your Nokia account, or, if you do not yet have one, select **Create new account**.
- 2 Sign in to your Facebook account.
- 3 Select your current location.
- 4 Enter your status update.
- 5 To attach a picture to your post, select **Add a photo**.
- 6 Select **Share location**.

Manage your Facebook account

In the main view, select **Accounts > Share location settings > Facebook**.

Sharing your location and viewing the location of others requires an internet connection. This may involve the transmission of large amounts of data and related data traffic costs.

The Facebook terms of use apply to sharing your location on Facebook. Familiarise yourself with the Facebook terms of use and the privacy practices.

Before sharing your location to others, always consider carefully with whom you are sharing it. Check the privacy settings of the social networking service you are using as you might share your location with a large group of people.

Drive and Walk

Get voice guidance


Voice guidance, if available for your language, helps you find your way to a destination, leaving you free to enjoy the journey.

Select **Menu > Maps and Drive or Walk**.


When you use drive or walk navigation for the first time, you are asked to select the language of the voice guidance, and download the appropriate files.

If you select a language that includes street names, also the street names are said aloud. Voice guidance may not be available for your language.

Change the voice guidance language

In the main view, select  and **Navigation** > **Drive guidance** or **Walk guidance** and the appropriate option.

Deactivate voice guidance

In the main view, select  and **Navigation** > **Drive guidance** or **Walk guidance** and **None**.

Repeat the voice guidance for car navigation

In the navigation view, select **Options** > **Repeat**.

Adjust the volume of the voice guidance for car navigation

In the navigation view, select **Options** > **Volume**.

Drive to your destination

When you need turn-by-turn directions while driving, Maps helps you get to your destination.

Select **Menu** > **Maps** and **Drive**.


Drive to a destination

Select **Set destination** and the appropriate option.

Drive to your home

Select **Drive home**.

When you select **Drive home** or **Walk home** for the first time, you are prompted to define your home location. To later change the home location, do the following:

- 1 In the main view, select .
- 2 Select **Navigation** > **Home Location** > **Redefine**.
- 3 Select the appropriate option.

Tip: To drive without a set destination, select **Map**. Your location is displayed on the centre of the map as you move.

Change views during navigation

Swipe the screen to select **2D view**, **3D view**, **Arrow view**, or **Route overview**.

Obey all local laws. Always keep your hands free to operate the vehicle while driving. Your first consideration while driving should be road safety.

Navigation view



- 1 Route
- 2 Your location and direction
- 3 Compass
- 4 Information bar (speed, distance, time)

Get traffic and safety information

Enhance your driving experience with real-time information about traffic events, lane assistance, and speed limit warnings, if available for your country or region.

Select **Menu** > **Maps and Drive**.

View traffic events on the map

During drive navigation, select **Options** > **Traffic info**. The events are displayed as triangles and lines.

Update traffic information

Select **Options** > **Traffic info** > **Update traffic info**.

When planning a route, you can set the device to avoid traffic events, such as traffic jams or roadworks.

Avoid traffic events

In the main view, select  > **Navigation** > **Reroute due to traffic**.

The location of speed cameras may be shown on your route during navigation, if this feature is enabled. Some jurisdictions prohibit or regulate the use of speed camera location data. Nokia is not responsible for the accuracy, or the consequences of using speed camera location data.

Walk to your destination

When you need directions to follow a route on foot, Maps guides you over squares, and through parks, pedestrian zones, and even shopping centres.

Select **Menu** > **Maps and Walk**.


Walk to a destination

Select **Set destination** and the appropriate option.

Walk to your home

Select **Walk home**.

When you select **Drive home** or **Walk home** for the first time, you are prompted to define your home location. To later change the home location, do the following:

- 1 In the main view, select .
- 2 Select **Navigation** > **Home Location** > **Redefine**.
- 3 Select the appropriate option.


Tip: To walk without a set destination, select **Map**. Your location is displayed on the centre of the map as you move.

Plan a route

Plan your journey, and create your route and view it on the map before setting off.

Select **Menu** > **Maps and My position**.

Create a route

- 1 Tap the location of your starting point. To search for an address or place, select **Search**.
- 2 Tap the location's information area ()
- 3 Select **Add to route**.
- 4 To add another route point, select **Add new route point** and the appropriate option.

Change the order of the route points

- 1 Select a route point.

- 2 Select **Move**.
- 3 Tap the place where you want to move the route point to.

Edit the location of a route point

Tap the route point, and select **Edit** and the appropriate option.

View the route on the map

Select **Show route**.

Navigate to the destination

Select **Show route** > **Options** > **Start driving** or **Start walking**.

Change the settings for a route

The route settings affect the navigation guidance and the way the route is displayed on the map.

- 1 In the route planner view, open the Settings tab. To get to the route planner view from the navigation view, select **Options** > **Route points** or **Route point list**.
- 2 Set the transportation mode to **Drive** or **Walk**. If you select **Walk**, one-way streets are regarded as normal streets, and walkways and routes through, for example, parks and shopping centres, can be used.
- 3 Select the desired option.

Select the walking mode

Open the Settings tab, and select **Walk** > **Preferred route** > **Streets** or **Straight line**. **Straight line** is useful on off-road terrain as it indicates the walking direction.

Use the faster or shorter driving route

Open the Settings tab, and select **Drive** > **Route selection** > **Faster route** or **Shorter route**.

Use the optimised driving route

Open the Settings tab, and select **Drive** > **Route selection** > **Optimised**. The optimised driving route combines the advantages of both the shorter and the faster routes.

You can also choose to allow or avoid using, for example, motorways, toll roads, or ferries.

Time management

Clock

About the clock



Select Menu > Applications > Clock.

Set and manage alarms, and check local times in different countries and cities.

Set the time and date

In the home screen, select the clock and **Options > Settings > Time or Date**.

Tip: To view the time and date when the screen and keys are locked, press and hold the menu key.

Set an alarm

You can use your device as an alarm clock.

In the home screen, select the clock.

- 1 Select **New alarm**.
- 2 Set the alarm time, and enter a description.
- 3 To set the alarm to sound, for example, at the same time every day, select **Repeat**.

Remove an alarm

Select and hold the alarm, and from the pop-up menu, select **Delete alarm**.

Snooze an alarm

When an alarm sounds, you can snooze the alarm. This pauses the alarm for a defined length of time.

When the alarm sounds, select **Snooze**.

Set the length of the snooze time

In the home screen, select the clock and **Options > Settings > Alarm snooze time**, and set the length of time.

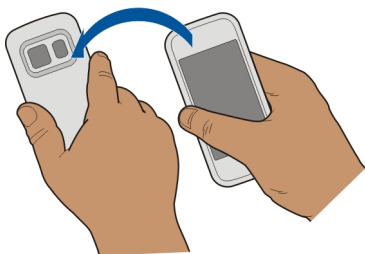
You can snooze alarms also by turning your device display down. To use this feature, you must first activate the sensors.

Activate the sensors

Select **Menu** > **Settings and Phone** > **Sensor settings** > **Sensors** > **On**.

Activate turning control for snoozing

Select **Menu** > **Settings and Phone** > **Sensor settings** > **Turning control** > **Snoozing alarms**.



Update the time and date automatically

You can set your device to update the time, date, and time zone automatically.

In the home screen, select the clock and **Options** > **Settings** > **Automatic time update** > **On**.

Automatic update is a network service.

Change the time zone when travelling

You can set the clock to the local time when travelling abroad.

In the home screen, select the clock, and open the world clock tab.

Add a location

Select **Options** > **Add location** and a location.

Set your current location

Select and hold a location, and from the pop-up menu, select **Set as current location**. The time in your device is changed according to the selected location. Make sure the time is correct.

Check the time in different cities

To view the time in different locations, add them to your world clock tab. You can also add pictures for the locations, for example, a picture of your friend who lives in the city in question, or a view from your favourite tourist attraction.

In the home screen, select the clock, and open the world clock tab.

Add a location

Select **Options** > **Add location** and a location. You can add up to 15 locations.

Add a picture for a location

Select and hold a location, and from the pop-up menu, select **Change image** and a picture.

Calendar

About the calendar

 Select **Menu** > **Calendar**.

With your device calendar, you can do the following:



- Keep your schedules organised
- Add reminders for anniversaries and other important dates
- Keep your to-do list up to date

You can have separate calendars for free time and work.

View your schedule for the week

You can browse your calendar entries in different views. To easily check all the entries for a particular week, use the week view.


In the home screen, select the date.


From the toolbar, select  > .

Add a task to your to-do list

Do you have important tasks to handle at work, library books to return, or maybe an event you want to attend? You can add tasks (to-do notes) to your calendar. If you have a particular deadline, set a reminder.

In the home screen, select the date.

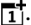

- 1 Go to the desired date, and select .
- 2 Select the entry type field and **To-do note**.

- 3 Fill in the fields. To close the text input dialog, select .
- 4 To add a reminder for the task, select **Alarm** > **On**.

Add an appointment

Save your important appointments to your calendar as meeting entries.


In the home screen, select the date.

- 1 Go to the desired date, and select . The meeting entry is selected as default.
- 2 Fill in the fields. To close the text input dialog, select .
- 3 To repeat the meeting entry at regular intervals, select **Repeat** and the time interval. Select **Repeat until**, and enter the end date.

Remember a birthday

You can add a reminder for birthdays and other special dates. The reminders are repeated annually.

In the home screen, select the date.

- 1 Go to the desired date, and select **Options** > **New entry** > **Calendar entry type** > **Anniversary**.
- 2 Fill in all the fields. To close the text input dialog, select .

Use separate calendars for work and free time

You can have more than one calendar. Create one for work and another for your free time.

In the home screen, select the date.

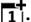
Create a new calendar

- 1 Select **Options** > **Manage calendars**.
- 2 Select **Options** > **Create new calendar**.
- 3 Enter a name, and set a colour code for the calendar.
- 4 Define the visibility for the calendar. When a calendar is hidden, the calendar entries and reminders are not displayed in different calendar views or in the home screen.

Modify calendar settings

In the Manage calendars view, select the desired calendar.

Add an entry to a particular calendar

- 1 Go to the desired date, and select .

- 2 Select the desired entry type.
- 3 Select **Calendar entry saved to** and the calendar you want to save the entry to.

In different calendar views, the colour codes indicate to which calendar an entry is saved.

Office

Quickoffice

About Quickoffice

 Select **Menu > Office > Quickoffice**.

Quickoffice consists of the following:

- Quickword for viewing and editing Microsoft Word documents
- Quicksheet for viewing and editing Microsoft Excel worksheets
- Quickpoint for viewing and editing Microsoft PowerPoint presentations

Not all file formats or features are supported.

Read Microsoft Word, Excel, and PowerPoint documents

With Quickoffice, you can view Microsoft Office documents, such as Word documents, Excel worksheets, or PowerPoint presentations.

Select **Menu > Office > Quickoffice**.


Open a file

Select the memory where the file is stored, browse to the correct folder, and select the file.

Sort files

Select **Options > Sort by**.

Send files to a compatible device

Select  and the sending method.

Not all formats or features are supported.

Edit a document

With Quickoffice, you can edit Microsoft Word documents.

Select **Menu > Office > Quickoffice**.

Create a new document

Select **New document**.

Insert text

Select an empty area, and enter text.

Edit text

Select a paragraph.

Format text

To edit the font and paragraph properties, select **Options** > **Format**.

Edit a workbook

With Quickoffice, you can edit Microsoft Excel workbooks.

Select **Menu** > **Office** > **Quickoffice**.

Create a new document

Select **New document**.

Edit a cell

Select the cell and **Options** > **Edit cell**. To insert a function, in the editing view, select **Options** > **Insert function**.

Edit a presentation

With Quickoffice, you can edit Microsoft PowerPoint presentations.

Select **Menu** > **Office** > **Quickoffice**.

Create a new document

Select **New document**.

Add a slide

Select **Options** > **Slide options** > **Insert new slide**.

Insert an image, textbox, shape, or other element

Select **Options** > **Insert**.

Edit text

Select a textbox and **Options** > **Edit textbox**.

Read PDF documents



With Adobe Reader, you can read PDF documents.

Select **Menu > Office > Adobe PDF**.

Open a file

Select the memory where the file is stored, browse to the correct folder, and select the file.

Make a calculation



Select **Menu > Office > Calculator**.

- 1 Enter the first number of the calculation.
- 2 Select a function, such as add or subtract.
- 3 Enter the second number of the calculation.
- 4 Select =.

Save or retrieve the result of a calculation

Select **Options > Memory > Save or Recall**.

Write notes

About Notes



Select **Menu > Office > Notes**.

You can write notes, such as meeting memos, and save received plain text files (TXT files) to the Notes application.

Make a shopping list

Shopping lists on paper are easy to lose. Instead of writing them on paper, you can make your shopping lists with Notes. This way, you always have the list with you! You can also send the list to, for example, a family member.

Select **Menu > Office > Notes**.

- 1 Select **Options > New note**.
- 2 Enter text in the note field.

Send the list

Open the note, and select **Options > Send** and the sending method.

Translate words from one language to another



You can translate words from one language to another. Not all languages may be supported.

Select **Menu > Office > Dictionary**.

- 1 Enter text in the search field. Suggestions of words to translate are displayed.
- 2 Select the word from the list.

Change the source or target language

Select **Options > Languages > Source or Target**.

Download more languages from the internet

Select **Options > Languages > Download languages**.

English is preinstalled, and you can add two additional languages.

Open or create zip files

With Zip manager, you can open and extract files from zip files. You can also create new zip files, to store and compress files.



Select **Menu > Office > Zip**.

Connectivity

Internet connections

Define how your device connects to the internet

Your device automatically checks for and connects to an available known network when a network connection is needed. Selection is based on the connection settings, unless there are application-specific settings applied.

Select **Menu > Settings and Connectivity > Settings**.

Automatically switch to a known WLAN connection when available

Select **Switch to WLAN > Known WLANs only**.

You can also connect to WLANs manually using the WLAN wizard application.

Only use a WLAN connection

For WLAN connections when in your home network, select **Data use in home country > WLAN only**. For WLAN connections when outside your home network, select **Data use when abroad > WLAN only**.

Automatically use a packet data connection when in your home network

Select **Data use in home country** > **Automatic**.

To set the device to connect only through your home network service provider when in your home country, select **Data use in home country**. To set the device to request confirmation before connecting, select **Data use in home country** > **Always ask**.

Request confirmation before using a packet data connection when outside your home network

Select **Data use when abroad** > **Always ask**.

To set the device to automatically connect, select **Data use when abroad** > **Automatic**. Opening connections when abroad can raise data transfer costs substantially.

Change access point priority for the internet connection

- 1 Select **Destinations** > **Internet**.
- 2 Select and hold an access point, and from the pop-up menu, select **Change priority**.
- 3 Tap the position in the list to move the access point to.

Example: If a WLAN access point is ranked above a packet data access point in the list, the device will always try to first connect to the WLAN access point, only connecting to the packet data access point if the WLAN is not available.

Create a new access point


Select **Options** > **New access point**.


Wireless LAN

About WLAN connections

 Select **Menu** > **Settings and Connectivity** > **WLAN**.

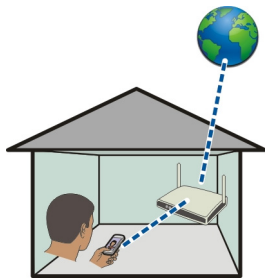
The WLAN wizard application helps you connect to a wireless local area network (WLAN) and manage your WLAN connections.

 **Important:** Use encryption to increase the security of your WLAN connection. Using encryption reduces the risk of others accessing your data.

 **Note:** Using WLAN may be restricted in some countries. For example, in France, you are only allowed to use WLAN indoors. For more information, contact your local authorities.

Connect to a WLAN at home

To help save data costs, connect to your home WLAN when you are at home and want to browse the web on your device.



- 1 Select **Menu > Settings and Connectivity > WLAN**.
- 2 Select and hold your home WLAN, and from the pop-up menu, select **Start web browsing**.

If your home WLAN is secured, enter the passcode. If your home WLAN is hidden, select **Other (hidden netw.)**, and enter the network name (service set identifier, SSID).

Close the WLAN connection

Select and hold the connection, and from the pop-up menu, select **Disconnect WLAN**.


Connect to a WLAN on the move

Connecting to a WLAN is a handy way of accessing the internet when not at home. Connect to public WLANs in public places, such as a library or internet café.

- 1 Select **Menu > Settings and Connectivity > WLAN**.
- 2 Select and hold the desired WLAN connection, and from the pop-up menu, select **Start web browsing**.

Bluetooth

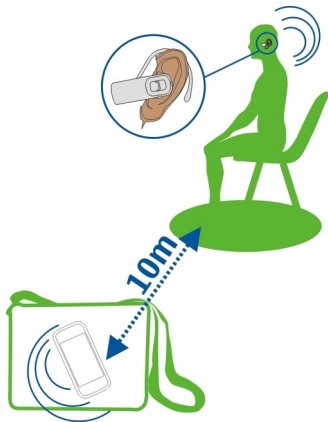
About Bluetooth connectivity

-  Select **Menu > Settings and Connectivity > Bluetooth**.

With Bluetooth connectivity, you can make a wireless connection to other compatible devices, such as mobile devices, computers, headsets, and car kits.

You can use the connection to send items from your device, transfer files from your compatible PC, and print files with a compatible printer.

Since devices with Bluetooth wireless technology communicate using radio waves, they do not need to be in direct line-of-sight. However, they must be within 10 metres (33 feet) of each other, although the connection may be subject to interference from obstructions such as walls or from other electronic devices.



When the device is locked, only connections to authorised devices are possible.

Connect to a wireless headset

With a wireless headset you can answer a call even if your device is not directly at hand, and you can have your hands free, for example, to continue working at your computer during a call.

- 1 Select **Menu > Settings and Connectivity > Bluetooth > On**.
- 2 Switch the headset on.
- 3 To pair your device and the headset, open the **Paired devices** tab.
- 4 Select the headset.
If the headset is not displayed in the list, to search for it, select **Options > New paired device**.
- 5 You may need to enter a passcode. For details, see the user guide of the headset.

Send a picture or other content to another device using Bluetooth

You can use Bluetooth to send pictures, videos, business cards, calendar entries, and other content to your friend's compatible devices and to your computer.

You can have several Bluetooth connections active at a time. For example, if you are connected to a compatible headset, you can also send files to another compatible device at the same time.

- 1 Select and hold the item, for example, a picture. From the pop-up menu, select **Send > Via Bluetooth**.
- 2 Select the device to connect to. If the desired device is not displayed, to search for it, select **More devices**. When searching, Bluetooth devices within range are displayed.
- 3 If the other device requires a passcode, enter the passcode. The passcode, which you can define yourself, must be entered in both devices. The passcode in some devices is fixed. For details, see the user guide of the device.
The passcode is valid only for the current connection.
- 4 If you connect to a device frequently, to set it as authorised, accept the authorisation query **Authorise device to make connections automatically?** when pairing.
When a device is authorised, you do not have to enter the passcode every time.

Connect to a car kit using remote SIM mode

With remote SIM mode, a compatible car kit can use the SIM card of your device.

Select **Menu > Settings and Connectivity > Bluetooth**.

Before remote SIM mode can be activated, your device and accessory must be paired. Initiate the pairing from the car kit accessory.

- 1 To activate Bluetooth, select **Bluetooth > On**.
- 2 To activate remote SIM mode in your device, select **Remote SIM mode > On**.
- 3 Activate Bluetooth in the car kit accessory.

When remote SIM mode is activated, **Remote SIM mode** is displayed in the home screen. The connection to the wireless network is closed, and you cannot use SIM card services or features that require cellular network coverage.

To make or receive calls when in remote SIM mode, you need to have a compatible accessory, such as a car kit, connected to your device.

Your device will only allow emergency calls in this mode.

Deactivate remote SIM mode

Press the power key, and select **Exit remote SIM mode**.

Block a device

You can prevent devices from creating a Bluetooth connection to your device.

Select **Menu > Settings and Connectivity > Bluetooth**.

Open the Paired devices tab, select and hold the device you want to block, and from the pop-up menu, select **Block**.

Remove a device from the blocked devices list

Open the Blocked devices tab, select and hold the device you want to remove from the list, and from the pop-up menu, select **Delete**.

If you reject a pairing request from another device, you are asked if you want to add the device to the list of blocked devices.

Protect your device

When Bluetooth is activated in your device, you can control who can find and connect to your device.

Select **Menu > Settings and Connectivity > Bluetooth**.

Prevent others from detecting your device

Select **My phone's visibility > Hidden**.

When your device is hidden, others cannot detect it. However, paired devices can still connect to your device.

Deactivate Bluetooth

Select **Bluetooth > Off**.


Do not pair with or accept connection requests from an unknown device. This helps to protect your device from harmful content.

USB data cable

Copy a picture or other content between your device and a computer

You can use a USB data cable to copy pictures and other content between your device and a computer.


- 1 To make sure that Media transfer is set as the USB mode, select **Menu > Settings and Connectivity > USB > Media transfer**.

- 2 Use a compatible USB  data cable to connect your device to a computer. The device is displayed as a portable device on your computer. If Media transfer mode does not work on your computer, use Mass storage mode instead.
- 3 Use the file manager of the computer to copy the content.


Change the USB mode

For best results when copying content or synchronising your device with your computer, activate the appropriate USB mode when using a USB data cable to connect to various devices.

Select **Menu > Settings and Connectivity > USB** and from the following:


 **Nokia Ovi Suite** — Connect your device to a compatible computer that has Nokia Ovi Suite installed. In this mode, you can synchronise your device with Ovi Suite and use other Ovi Suite features.


This mode is activated automatically when you open the Ovi Suite application.

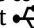
 **Mass storage** — Connect your device to a compatible computer that does not have Ovi Suite installed. Your device is recognised as a USB flash memory. You can also connect your device to other devices, such as a home or car stereo, to which you can connect a USB drive.

While connected to a computer in this mode, you may not be able to use some of the device applications.

The mass memory in your device cannot be accessed by the other device.

 **Media transfer** — Connect your device to a compatible computer that does not have Ovi Suite installed. Music protected by digital rights management (DRM) must be transferred in this mode. Some home entertainment systems and printers can also be used in this mode.

 **Conn. PC to net** — Connect your device to a compatible computer, and use the device as a wireless modem. The computer connects to the internet automatically.

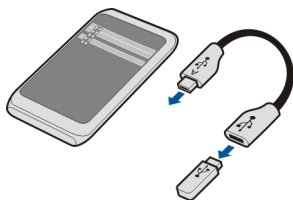
Tip: When the USB cable is connected, you can change the USB mode in most views. In the top right corner, select  > **USB**.

Connect a USB mass storage device

With the USB On-The-Go (OTG) adapter, you can connect your device to a compatible USB memory stick or hard drive.

Connect a memory stick

- 1 Connect the micro USB end of the USB OTG adapter to the USB port in your device.
- 2 Connect a memory stick to the USB OTG adapter.



The File manager application opens, and the memory stick is displayed as a mass memory.

Copy or move a file

In File mgr., select and hold the file you want to copy or move, and from the pop-up menu, select the desired option and the target folder.

If you connect a hard drive that requires more than 200 mA of power, use an external power source for the hard drive.

VPN connections

Select **Menu > Settings and Connectivity > Settings > VPN**.

You need a virtual private network (VPN) connection to, for example, browse your company intranet or access your work mails remotely.

VPN policies define how data is encrypted and how your company authenticates your device. To configure the VPN client, certificates, and policies, contact your company's IT department. After installing a policy, a VPN connection method is automatically added to an intranet destination.

For more information, search for mobile VPN at www.nokia.com.



Close a network connection

If several applications are using an internet connection, you can use the Connection manager application to close some or all network connections.

Select **Menu > Settings and Connectivity > Connection manager**.

Select and hold the connection, and from the pop-up menu, select **Disconnect**.

In the active data connections view, you can see your current network connections.

 indicates a packet data connection, and  indicates a wireless local area network (WLAN) connection.

View details for a connection

Select and hold the connection, and from the pop-up menu, select **Details**.

Details, such as the amount of transferred data and connection duration, are displayed.

Tip: In most views, to open the Connection manager application, select the notification area in the top right corner and  > **Connection manager**.

Store your files on a remote drive

If you want to back up your data or save space on your device, you can use a remote drive for storing and managing your files.

Select **Menu** > **Settings** and **Connectivity** > **Remote drives**.

You may receive the remote drive settings as a configuration message from your service provider. Open the message, and save the settings.

The service may be chargeable. For information on availability and possible costs, contact your service provider.

Connect to a remote drive

Select and hold the remote drive, and from the pop-up menu, select **Connect**.

Add a new remote drive

- 1 Select **Options** > **New drive**.
- 2 Enter the name of the remote drive.
- 3 Enter the web address of the remote drive, including the port number.
- 4 To select the access point to use to connect to the remote drive, select **Access point** > **User defined**. If you select **Ask when needed**, you are prompted for the destination or access point every time the application connects to the network.
- 5 Enter your user name and password, if required by the remote drive service.

Modify the settings of an existing remote drive

Select **Remote drives** and the desired drive.

Use the **File manager** application to access your remote drives and manage stored files.

Device management

Keep your device software and applications up to date

About device software and application updates

With device software updates and application updates, you can get new features and enhanced functions for your device. Updating the software may also improve your device performance.



It is recommended that you back up your personal data before updating your device software.



Warning:

If you install a software update, you cannot use the device, even to make emergency calls, until the installation is completed and the device is restarted.

Using the service or downloading content may cause transfer of large amounts of data, which may result in data traffic costs.

After you update your device software or applications, the instructions in the user guide may no longer be up to date.

Update device software and applications using your device



You can check if there are updates available for your device software or for individual applications, and then download and install them to your device (network

service). You can also set your device to automatically check for updates and notify you when important or recommended updates are available.

Select **Menu** > **Applications** > **SW update**.

If there are available updates, select which updates to download and install, and select



Set your device to automatically check for updates

Select **Options** > **Settings** > **Auto-check for updates**.

Update device software using your PC

You can use the Nokia Ovi Suite PC application to update your device software. You need a compatible PC, a high-speed internet connection, and a compatible USB data cable to connect your device to the PC.

To get more information and to download the Nokia Ovi Suite application, go to www.ovi.com/suite.

Manage files

About File manager



Select **Menu** > **Office** > **File mgr.**

With File manager, you can browse, manage, and open files on your device.

View the files stored in your device

Select **Menu** > **Office** > **File mgr.** and the desired memory.

The folders on the root of the memory are displayed.

Organise files

You can use the File manager application to delete, move, copy, or create new files and folders. If you organise your files into their own folders, it might help you find the files in future.

Select **Menu** > **Office** > **File mgr.**

Create a new folder

In the folder where you want to create a sub-folder, select **Options** > **Organise** > **New folder**.

Copy or move a file to a folder

Select and hold the file, and from the pop-up menu, select the appropriate option.

Back up files

Want to make sure that you will not lose any important files? You can back up the device memory to a compatible computer.



- 1 Open Nokia Ovi Suite on your PC.
- 2 Connect your device to your PC using Nokia Ovi Suite mode.
- 3 In Ovi Suite, select **Tools > Backup**.

It is recommended that you back up the device memory regularly to a compatible computer.

Tip: If you have DRM-protected content, use Nokia Ovi Suite to back up both the licences and the content to your computer.

Format the mass memory

Want to delete all content from your device mass memory? When you format the mass memory, all the data on it is deleted.

Back up all data you want to keep before formatting the mass memory. All data is permanently deleted.

- 1 Select **Menu > Office > File mgr..**
- 2 Select and hold the mass memory, and from the pop-up menu, select **Format**.

Do not format the mass memory using PC software, because it may cause degraded performance.

You can use Nokia Ovi Suite to back up data to a compatible computer. Digital rights management (DRM) technologies may prevent some backup data from being restored. For more information about DRM used for your content, contact your service provider.

Increase available memory for more content

Do you need to increase the available device memory, so you can install more applications, and add more content?

Transfer data to the mass memory or to a compatible computer.

You can also remove the following if no longer needed:

- Text, multimedia, and mail messages
- Contact entries and details
- Applications
- Installation files (.sis or .six) for installed applications. Back up the files to a compatible computer.
- Pictures and videos in Photos. Back up the files to a compatible computer.

Tip: If expired trial or demo applications are installed, remove them.

Manage applications

About Application manager

 Select Menu > Settings and Application manager.

With Application manager you can view details of installed applications, remove applications, and define installation settings.

You can install the following types of applications:

- Java™ ME applications that have the .jad or .jar file extension
- Applications, compatible with the Symbian operating system, that have the .sis or .six file extension
- Widgets that have the .wgz file extension

Only install applications that are compatible with your device.

Remove an application from your device

You can remove installed applications that you no longer need or use, to increase the amount of available memory.

Select Menu > Settings and Application manager.

- 1 Select Installed apps..

- 2 Select and hold the application to remove, and from the pop-up menu, select **Uninstall**.

If you remove an application, you can only reinstall it if you have the original installation file or a full backup of the removed application. You may not be able to open files created with a removed application.

If an installed application depends on a removed application, the installed application may stop working. For details, see the user documentation of the installed application.

After you install applications to a compatible memory card, installation files (.sis, .sisx) remain in the device memory. The files may use large amounts of memory and prevent you from storing other files. To maintain sufficient memory, use Nokia Ovi Suite to back up installation files to a compatible PC, then use the file manager to remove the installation files from the device memory. If the .sis file is a message attachment, delete the message from the Messaging inbox.

Synchronise content

About Sync

 Select Menu > Settings and Connectivity > Data transfer > Sync.

With the Sync application, you can synchronise your contacts, notes, and other content between your device and a remote server. After the synchronisation, you have a back-up of your important data on the server.



Synchronise content between your device and a remote server

Would you like to have your calendar, notes, and other content backed up and at hand, whether you are sitting by your computer or on the go with your mobile device? With the Sync application, you can synchronise the important content between your device and a remote server.

Select Menu > Settings and Connectivity > Data transfer > Sync.

You may receive synchronisation settings as a configuration message from your service provider. The synchronisation settings are saved as a synchronisation profile. When you open the application, the default or previously used synchronisation profile is displayed.

Include or exclude content types

Select a content type.

Synchronise data

Select **Options** > **Synchronise**.

Tip: To synchronise content between your device and Ovi, you can use the Ovi Sync application.

About Ovi Sync



Select **Menu** > **Applications** > **Tools** > **Ovi sync**.

With Ovi Sync, you can synchronise contacts, calendar entries, and notes between your device and Ovi by Nokia. This way you always have a backup of your important content. To use Ovi Sync, you need a Nokia account. If you do not have a Nokia account, create one at www.ovi.com.

If you use Ovi Sync to automatically synchronise your contacts with Ovi, do not allow synchronisation with any other service, such as Mail for Exchange, as there may be conflicts.

Back up content to Ovi

Would you like to have your calendar entries, notes, and other content on your device backed up on Ovi? With the Ovi Sync application, you can synchronise the content between your device and Ovi manually or automatically.

Select **Menu** > **Applications** > **Tools** > **Ovi sync**.

When you open the application for the first time, the synchronisation wizard helps you define the settings and select the content to synchronise.

Define the content to synchronise

Select **Options** > **Sync settings** > **Items to synchronise**.

Synchronise manually

Select **Synchronise**.

Synchronise automatically

- 1 To activate automatic synchronisation, select **Options > Sync settings > Auto-sync**.
- 2 To define how often to synchronise, select **Options > Sync settings > Scheduled sync interval**.

Copy contacts or pictures between devices

With the Phone switch application, you can use Bluetooth to synchronise and copy content between two compatible Nokia devices, free of charge.

Select **Menu > Settings > Connectivity > Data transfer > Phone switch**.

- 1 Select from the following:



— Synchronise content between two devices.



— Copy content from another device.



— Copy content to another device.

- 2 Select the device you want to connect to, and pair the devices. Bluetooth needs to be activated.
- 3 If the other device requires a passcode, enter the passcode. The passcode, which you can define yourself, must be entered in both devices. The passcode in some devices is fixed. For details, see the user guide of the device.
The passcode is valid only for the current connection.
- 4 Select the content and **OK**.

Tip: If you save the details, it is easier to later exchange the same content with the same device.

Protect your device

Set your device to lock automatically

Want to protect your device against unauthorised use? Define a lock code, and set your device to lock itself automatically when you're not using it.

- 1 Select **Menu > Settings and Phone > Phone management > Security settings > Phone and SIM card**.
- 2 Select **Lock code**, and enter a lock code. A minimum of 4 characters is required, and numbers, symbols, and upper and lower case letters can be used.
Keep the lock code secret and in a safe place separate from your device. If you forget the lock code and your device is locked, your device will require service. Additional charges may apply, and all the personal data in your device may be deleted. For more information, contact a Nokia Care point or your device dealer.

- 3 Select **Phone autolock period**, and define the length of time after which the device is locked automatically.

Lock your device manually

In the home screen, press **ⓘ**, select **Lock phone**, and enter the lock code.

Unlock your device

Slide the lock switch, enter the lock code, and select **OK**.

If the lock switch is out of reach, press the menu key, and select **Unlock**.

Lock your device remotely

Forgot your device at work and want to lock it to prevent unauthorised use? You can lock your device remotely using a predefined text message.

Enable remote locking

- 1 Select **Menu > Settings and Phone > Phone management > Security settings > Phone and SIM card > Remote phone locking > Enabled**.
- 2 Enter the text message content. It can be 5-20 characters, and both upper and lower case letters can be used.
- 3 Enter the same text again to verify it.
- 4 Enter the lock code.

Send the lock message

To lock the device remotely, write the predefined text, and send it to your device as a text message.

To unlock your device, you need the lock code.

Find more help

Support

When you want to learn more about how to use your product or you are unsure how your device should function, go to www.nokia.com/support, or using a mobile device, nokia.mobi/support. You can also read the in-device guide. Select **Menu > Applications > User guide**.

If this does not resolve your issue, do one of the following:

- Reboot your device. Press and hold **ⓘ** for about 8 seconds. The device vibrates three times and switches off. To switch your device on again, press **ⓘ**.
- Restore the original factory settings.
- Update your device software.

If your issue remains unsolved, contact Nokia for repair options. Go to www.nokia.com/repair. Before sending your device for repair, always back up your device data.

Access codes

PIN code — This code protects your SIM card against unauthorised use. The PIN code (4 - 8 digits) is usually supplied with the SIM card.

PIN2 code — This code (4 - 8 digits) is supplied with some SIM cards, and is required to access some functions in your device.

If you forget an access code, contact the network service provider whose SIM card is in your device. After three consecutive incorrect PIN or PIN2 code entries, the code is blocked, and you need the PUK or PUK2 code to unblock it.



PUK code and PUK2 code — These codes (8 digits) are required to change a blocked PIN code or PIN2 code, respectively. If the codes are not supplied with the SIM card, contact the network service provider whose SIM card is in your device.

IMEI number — This number (15 digits) is used to identify valid devices in the GSM network. Devices that are, for example, stolen, can be blocked from accessing the network. To view the IMEI number for your device, in the home screen, enter ***#06#**.

Lock code (also known as security code) — The lock code helps you to protect your device against unauthorised use. You can create and change the code, and set the device to request the code. Keep the new code secret and in a safe place separate from your device. If you forget the code and your device is locked, your device will require service. Additional charges may apply, and all the personal data in your device may be deleted. For more information, contact a Nokia Care Point or your device dealer.

Troubleshooting

If your device stops responding

Reboot your device. Press and hold  for about 8 seconds. The device vibrates three times and switches off. To switch your device on again, press .

No content, such as contacts or messages, is deleted.

Restore original settings

If your device is not working properly, you can reset some settings to their original values.

- 1 End all active calls and connections.
- 2 Select **Menu > Settings and Phone > Phone management > Factory settings > Restore**.
- 3 Enter the lock code.

This does not affect documents or files stored on your device.

After restoring the original settings, the device switches off, and then on again. This may take longer than usual.

What to do when the memory is full?

If either of the following messages is displayed when you are deleting several items at the same time, delete items one by one, beginning with the smallest items:

- **Not enough memory to perform operation. Delete some data first.**
- **Memory low. Delete some data from phone memory.**

Move data you want to keep to the mass memory or to a compatible computer. If possible, install applications to the mass memory, rather than the device memory.

Message indicator blinking

Q: Why is the message indicator blinking in the home screen?

A: The maximum number of messages are stored on your device. Delete some messages. The number of messages that can be stored on the SIM card is considerably lower than the number that can be stored in the device memory. You can use Nokia Ovi Suite to save messages to a compatible computer.

A contact appears twice in the contacts list

Q: I have a contact twice in my contacts list. How can I remove the extra contact?

A: You can merge two contacts into one. Select **Options > Merge contacts**, select the contacts to merge, and select **Merge**.

Unreadable characters while browsing the web

If unreadable characters are displayed, select **Menu > Web and Options > Settings > Page > Default encoding** and the correct encoding for the character set of the language.

Prepare your device for recycling

If you buy a new device, or otherwise want to dispose of your device, Nokia recommends that you recycle your device. Beforehand, remove all personal information and content from your device.

Remove all content and restore settings to the default values

- 1 Back up the content you want to keep to a compatible memory card (if available) or to a compatible computer.

116 Protect the environment

- 2 Close all active connections and calls.
- 3 Select **Menu > Settings and Phone > Phone management > Factory settings > Delete data and restore**.
- 4 Your device switches off and then on again. Check carefully that all your personal content, such as contacts, pictures, music, videos, notes, messages, mails, presentations, games and other installed applications have been removed. Content and information stored on the memory card or SIM card is not removed.

Protect the environment

Save energy

You do not need to charge your battery so often if you do the following:

- Close applications and data connections, such as WLAN or Bluetooth, when not in use.
- Set your device to enter power saver mode after the minimum period of inactivity, if available in your device.
- Deactivate unnecessary sounds, such as key tones.

Recycle



When this device has reached the end of its working life, all of its materials can be recovered as materials and energy. To guarantee the correct disposal and reuse, Nokia co-operates with its partners through a program called We:recycle. For information on how to recycle your old Nokia products and where to find collection sites, go to www.nokia.com/werecycle, or using a mobile device, nokia.mobi/werecycle, or call the Nokia Contact Center.

Recycle packaging and user guides at your local recycling scheme.



The crossed-out wheeled-bin symbol on your product, battery, literature, or packaging reminds you that all electrical and electronic products, batteries, and accumulators must be taken to separate collection at the end of their working life. This requirement applies in the European Union. Do not dispose of these products as unsorted municipal waste.

For more information on the environmental attributes of your device, see www.nokia.com/ecodeclaration.

Product and safety information

Network services and costs

Your device is approved for use on the WCDMA 850, 900, 1700, 1900, 2100 and GSM/EDGE 850, 900, 1800, 1900 MHz networks. To use the device, you need a subscription with a service provider.

Using network services and downloading content to your device may result in data traffic costs. Some product features require support from the network, and you may need to subscribe to them.

Take care of your device

Handle your device, battery, charger and accessories with care. The following suggestions help you protect your warranty coverage.

- Keep the device dry. Precipitation, humidity, and all types of liquids or moisture can contain minerals that corrode electronic circuits.
- Do not use or store the device in dusty or dirty areas. Moving parts and electronic components can be damaged.
- Do not store the device in high temperatures. High temperatures can shorten the life of the device, damage the battery, and warp or melt plastics.
- Do not store the device in cold temperatures. When the device warms to its normal temperature, moisture can form inside the device and damage electronic circuits.
- Do not attempt to open the device other than as instructed in the user guide.
- Unauthorised modifications may damage the device and violate regulations governing radio devices.
- Do not drop, knock, or shake the device. Rough handling can break internal circuit boards and mechanics.
- Only use a soft, clean, dry cloth to clean the surface of the device.
- Do not paint the device. Paint can clog the moving parts and prevent proper operation.
- Keep your device away from magnets or magnetic fields.
- To keep your important data safe, store it in at least two separate places, such as your device, memory card, or computer, or write down important information.

During extended operation, the device may feel warm. In most cases, this condition is normal. If you suspect the device is not working properly, take it to the nearest authorised service facility.

Recycle

Always return your used electronic products, batteries, and packaging materials to dedicated collection points. This way you help prevent uncontrolled waste disposal and promote the recycling of materials. Check product environmental information and how to recycle your Nokia products at www.nokia.com/werecycle, or with a mobile device, nokia.mobi/werecycle.

Crossed-out wheeled-bin symbol



The crossed-out wheeled-bin symbol on your product, battery, literature, or packaging reminds you that all electrical and electronic products, batteries, and accumulators must be taken to separate collection at the end of their working life. This requirement applies in the European Union. Do not dispose of these products as unsorted municipal waste. For more information on the environmental attributes of your device, see www.nokia.com/ecodeclaration.

118 Product and safety information

About Digital Rights Management

When using this device, obey all laws and respect local customs, privacy and legitimate rights of others, including copyrights. Copyright protection may prevent you from copying, modifying, or transferring images, music, and other content.

Content owners may use different types of digital rights management (DRM) technologies to protect their intellectual property, including copyrights. This device uses various types of DRM software to access DRM-protected content. With this device you can access content protected with WM DRM 1.0 and OMA DRM 2.0. If certain DRM software fails to protect the content, content owners may ask that such DRM software's ability to access new DRM-protected content be revoked. Revocation may also prevent renewal of such DRM-protected content already in your device. Revocation of such DRM software does not affect the use of content protected with other types of DRM or the use of non-DRM-protected content.

Digital rights management (DRM) protected content comes with an associated licence that defines your rights to use the content.

If your device has OMA DRM-protected content, to back up both the licences and the content, use the backup feature of Nokia Ovi Suite.

Other transfer methods may not transfer the licences which need to be restored with the content for you to be able to continue the use of OMA DRM-protected content after the device memory is formatted. You may also need to restore the licences in case the files on your device get corrupted.

If your device has WMDRM-protected content, both the licences and the content will be lost if the device memory is formatted. You may also lose the licences and the content if the files on your device get corrupted. Losing the licences or the content may limit your ability to use the same content on your device again. For more information, contact your service provider.

Some licences may be connected to a specific SIM card, and the protected content can be accessed only if the SIM card is inserted in the device.

Batteries and chargers

Battery and charger information

This device has an internal, nonremovable, rechargeable battery. Do not attempt to remove the battery from the device as you may damage the device. Take the device to the nearest authorised service facility for replacement of the battery.

This device is intended for use when supplied with power from the following chargers: AC-10. The exact charger model number may vary depending on the type of plug. The plug variant is identified by one of the following: E, X, AR, U, A, C, K, or B.

The battery can be charged and discharged hundreds of times, but it will eventually wear out. When the talk and standby times are noticeably shorter than normal, take the device to the nearest authorised service facility for battery replacement.

Battery safety



Note: The battery in your device is non-removable, so refer to the battery-related statements as applicable to your device.

When you unplug a charger or an accessory, hold and pull the plug, not the cord.

When your charger is not in use, unplug it from the electrical plug and the device. Do not leave a fully charged battery connected to a charger, as overcharging may shorten the battery's lifetime. If left unused, a fully charged battery will lose its charge over time.

Always keep the battery between 15°C and 25°C (59°F and 77°F). Extreme temperatures reduce the capacity and lifetime of the battery. A device with a hot or cold battery may not work temporarily.

Accidental short-circuiting can happen when a metallic object touches the metal strips on the battery. Short-circuiting may damage the battery or the connecting object.

Do not dispose of batteries in a fire as they may explode. Dispose of batteries according to local regulations. Recycle when possible. Do not dispose as household waste.

Do not dismantle, cut, open, crush, bend, puncture, or shred cells or batteries. If a battery leaks, do not let battery liquid touch skin or eyes. If this happens, immediately flush the affected areas with water, or seek medical help.


Do not modify, remanufacture, attempt to insert foreign objects into the battery, or immerse or expose it to water or other liquids. Batteries may explode if damaged.

Use the battery and charger for their intended purposes only. Improper use, or use of unapproved batteries or chargers may present a risk of fire, explosion, or other hazard, and may invalidate any approval or warranty. If you believe the battery or charger is damaged, take it to a service centre for inspection before continuing to use it. Never use a damaged battery or charger. Only use the charger indoors.

Additional safety information

Emergency calls

Make an emergency call

- 1 Ensure the device is switched on.
- 2 Check for adequate signal strength. You may also need to do the following:
 - Insert a SIM card.
 - Remove call restrictions you have activated for your device, such as call barring, fixed dialling, or closed user group.
 - Ensure your device is not in an offline or flight profile.
 - If the device screen and keys are locked, unlock them.
- 3 To clear the display, press the menu key as many times as needed.
- 4 Select Call.
- 5 Enter the official emergency number for your present location.
- 6 Select 
- 7 Give the necessary information as accurately as possible. Do not end the call until given permission to do so.



Important: Activate both cellular and internet calls, if your device supports internet calls. The device may attempt to make emergency calls both through cellular networks and through your internet call service provider. Connections in all conditions cannot be guaranteed. Never rely solely on any wireless device for essential communications like medical emergencies.

Small children

Your device and its accessories are not toys. They may contain small parts. Keep them out of the reach of small children.

Medical devices

Operation of radio transmitting equipment, including wireless phones, may interfere with the function of inadequately protected medical devices. Consult a physician or the manufacturer of the medical device to determine whether they are adequately shielded from external RF energy. Switch off your device when regulations posted instruct you to do so, for example, in hospitals.

Implanted medical devices

Manufacturers of medical devices recommend a minimum separation of 15.3 centimetres (6 inches) between a wireless device and an implanted medical device, such as a pacemaker or implanted cardioverter defibrillator, to avoid potential interference with the medical device. Persons who have such devices should:

- Always keep the wireless device more than 15.3 centimetres (6 inches) from the medical device.

120 Product and safety information

- Not carry the wireless device in a breast pocket.
- Hold the wireless device to the ear opposite the medical device.
- Turn the wireless device off if there is any reason to suspect that interference is taking place.
- Follow the manufacturer directions for the implanted medical device.

If you have any questions about using your wireless device with an implanted medical device, consult your health care provider.

Hearing



Warning:

When you use the headset, your ability to hear outside sounds may be affected. Do not use the headset where it can endanger your safety.

Some wireless devices may interfere with some hearing aids.

Nickel



Note: The surface of this device does not contain nickel in the platings. The surface of this device contains stainless steel.

Protect your device from harmful content

Your device may be exposed to viruses and other harmful content. Take the following precautions:

- Be cautious when opening messages. They may contain malicious software or otherwise be harmful to your device or computer.
- Be cautious when accepting connectivity requests, browsing the internet, or downloading content. Do not accept Bluetooth connections from sources you do not trust.
- Only install and use services and software from sources that you trust and that offer adequate security and protection.
- Install antivirus and other security software on your device and any connected computer. Only use one antivirus application at a time. Using more may affect performance and operation of the device and/or computer.
- If you access preinstalled bookmarks and links to third party internet sites, take the appropriate precautions. Nokia does not endorse or assume liability for such sites.

Operating environment

This device meets RF exposure guidelines in the normal use position at the ear or at least 1.5 centimetres (5/8 inch) away from the body. Any carry case, belt clip, or holder for body-worn operation should not contain metal and should position the device the above-stated distance from your body.

To send data files or messages requires a quality connection to the network. Data files or messages may be delayed until such a connection is available. Follow the separation distance instructions until the transmission is completed.

Vehicles

Radio signals may affect improperly installed or inadequately shielded electronic systems in motor vehicles such as electronic fuel injection, electronic antilock braking, electronic speed control, and air bag systems. For more information, check with the manufacturer of your vehicle or its equipment.

Only qualified personnel should install the device in a vehicle. Faulty installation or service may be dangerous and may invalidate your warranty. Check regularly that all wireless device equipment in your vehicle is mounted and operating properly. Do not store or carry flammable liquids, gases, or explosive materials in the same compartment as the device, its parts, or accessories. Remember that air bags inflate with great force. Do not place your device or accessories in the air bag deployment area.

Switch off your device before boarding an aircraft. The use of wireless devices in an aircraft may be dangerous to the operation of the aircraft and may be illegal.

Potentially explosive environments

Switch off your device in any area with a potentially explosive atmosphere. Obey all posted instructions. Sparks in such areas could cause an explosion or fire resulting in bodily injury or death. Switch off the device at refuelling points such as near gas pumps at service stations. Observe restrictions in fuel depots, storage, and distribution areas; chemical plants; or where blasting operations are in progress. Areas with a potentially explosive atmosphere are often, but not always, clearly marked. They include areas where you would be advised to turn off your vehicle engine, below deck on boats, chemical transfer or storage facilities and where the air contains chemicals or particles such as grain, dust, or metal powders. You should check with the manufacturers of vehicles using liquefied petroleum gas (such as propane or butane) to determine if this device can be safely used in their vicinity.

Certification information (SAR)

This mobile device meets guidelines for exposure to radio waves.

Your mobile device is a radio transmitter and receiver. It is designed not to exceed the limits for exposure to radio waves recommended by international guidelines. These guidelines were developed by the independent scientific organisation ICNIRP and include safety margins designed to assure the protection of all persons, regardless of age and health.

The exposure guidelines for mobile devices employ a unit of measurement known as the Specific Absorption Rate or SAR. The SAR limit stated in the ICNIRP guidelines is 2.0 watts/kilogram (W/kg) averaged over 10 grams of tissue. Tests for SAR are conducted using standard operating positions with the device transmitting at its highest certified power level in all tested frequency bands. The actual SAR level of an operating device can be below the maximum value because the device is designed to use only the power required to reach the network. That amount changes depending on a number of factors such as how close you are to a network base station.

The highest SAR value under the ICNIRP guidelines for use of the device at the ear is 0.56 W/kg.

Use of device accessories may result in different SAR values. SAR values may vary depending on national reporting and testing requirements and the network band. Additional SAR information may be provided under product information at www.nokia.com.

Copyright and other notices

DECLARATION OF CONFORMITY

CE 0434 Ⓢ

Hereby, NOKIA CORPORATION declares that this RM-626 product is in compliance with the essential requirements and other relevant provisions of Directive 1999/5/EC. A copy of the Declaration of Conformity can be found at http://www.nokia.com/phones/declaration_of_conformity/.

© 2010 Nokia. All rights reserved.

Nokia, Nokia Connecting People, Eseries, Nokia Original Accessories logo, and Ovi are trademarks or registered trademarks of Nokia Corporation. Nokia tune is a sound mark of Nokia Corporation. Other product and company names mentioned herein may be trademarks or tradenames of their respective owners.

Reproduction, transfer, distribution, or storage of part or all of the contents in this document in any form without the prior written permission of Nokia is prohibited. Nokia operates a policy of continuous development. Nokia reserves the right to make changes and improvements to any of the products described in this document without prior notice.



HDMI and the HDMI Logo are trademarks or registered trademarks of HDMI Licensing LLC.

'Dolby' is a trademark of Dolby Laboratories.

Manufactured under license from Dolby Laboratories.



Java and all Java-based marks are trademarks or registered trademarks of Sun Microsystems, Inc.

This product is licensed under the MPEG-4 Visual Patent Portfolio License (i) for personal and noncommercial use in connection with information which has been encoded in compliance with the MPEG-4 Visual Standard by a consumer engaged in a personal and noncommercial activity and (ii) for use in connection with MPEG-4 video provided by a licensed video provider. No license is granted or shall be implied for any other use. Additional information, including that related to promotional, internal, and commercial uses, may be obtained from MPEG LA, LLC. See <http://www.mpegla.com>.

To the maximum extent permitted by applicable law, under no circumstances shall Nokia or any of its licensors be responsible for any loss of data or income or any special, incidental, consequential or indirect damages howsoever caused.

The contents of this document are provided "as is". Except as required by applicable law, no warranties of any kind, either express or implied, including, but not limited to, the implied warranties of merchantability and fitness for a particular purpose, are made in relation to the accuracy, reliability or contents of this document. Nokia reserves the right to revise this document or withdraw it at any time without prior notice.

Reverse engineering of software in the device is prohibited to the extent permitted by applicable law. Insofar as this user guide contains any limitations on Nokia's representations, warranties, damages and liabilities, such limitations shall likewise limit any representations, warranties, damages and liabilities of Nokia's licensors.

The availability of products, features, applications and services may vary by region. For more information, contact your Nokia dealer or your service provider. This device may contain commodities, technology or software subject to export laws and regulations from the US and other countries. Diversion contrary to law is prohibited.

Nokia does not provide a warranty for or take any responsibility for the functionality, content, or end-user support of third-party applications provided with your device. By using an application, you acknowledge that the application is provided as is. Nokia does not make any representations, provide a warranty, or take any responsibility for the functionality, content, or end-user support of third-party applications provided with your device.

FCC/INDUSTRY CANADA NOTICE

Your device may cause TV or radio interference (for example, when using a telephone in close proximity to receiving equipment). The FCC or Industry Canada can require you to stop using your telephone if such interference cannot be eliminated. If you require assistance, contact your local service facility. This device complies with part 15 of the FCC rules. Operation is subject to the following two conditions: (1) This device may not cause harmful interference, and (2) this device must accept any interference received, including interference that may cause undesired operation. Any changes or modifications not expressly approved by Nokia could void the user's authority to operate this equipment.

Some operations and features are SIM card and/or network dependent, MMS dependent, or dependent on the compatibility of devices and the content formats supported. Some services are subject to a separate charge.

Index

A

access codes	114
alarm clock	90
anniversary entries	93
antennas	15
applications	24, 38, 106, 109
audio messages	52, 53

B

backing up data	108
barring calls	45
battery	13
— charging	14, 15
— saving power	33
birthday entries	93
blocking	
— device	102
blogs	58
Bluetooth	99, 100, 101, 102
bookmarks	58
browser	
<i>See Internet</i>	
business cards	50, 101

C

cable connection	102, 103
cache memory	58
Calculator	96
Calendar	62
calendar	92, 93
calls	44
— conference	40
— diverting	44
— internet calls	42, 43
— last dialled	43
— making	38, 39
— restricting	45, 46
— video calls	39

Camera	63
— location information	63
— recording videos	64
— sending pictures	65
— taking pictures	63, 64
charging the battery	14, 15
clock	90, 91, 92
connectivity	104
contacts	48
— adding	48
— copying	18, 51, 112
— editing	48
— favourites	49
— groups	50, 51
— in social networks	61, 62
— pictures	49
— ringing tones	50
— saving	48, 49
— searching	38
— sending	50, 101
— synchronising	51, 110
— troubleshooting	115
copying content	18, 71, 74, 102, 112
copyright protection	74

D

data connections	104
— Bluetooth	99
date and time	91
device	
— rebooting	114
— setup	17
— switching on/off	16, 114
dictionary	97
diverting calls	44
downloads	
— themes	35
DRM (digital rights management)	74

E

e-mail	
--------	--

See *mail***F**

factory settings, restoring	114
favourites	49
feeds, news	58
file management	107, 108
flashlight	12
FM radio	75, 76, 77

H

HDMI (high-definition multimedia interface)	10
HDMI (high-definition multimedia interface)	68, 69
headset	16
help	19
home screen	23, 35, 36, 37, 57

I

icons	30
images	
See <i>pictures</i>	
IMEI number	114
inbox, messages	53
indicators	30, 115
installing applications	109
Internet	57
— bookmarks	58, 59
— browsing pages	58
— cache memory	58
internet calls	42, 43
internet connection	97

J

Java applications	109
-------------------	-----

K

keyboard	9, 24, 26, 29
keyguard	11
keypad	27

keys and parts

7, 8, 9

L

language settings	54
licences	74
local events and services	59
location information	62, 63
lock code	112, 114
locking	
— device	112
— keys	11
— remotely	113
— screen	11
Log	44
loudspeaker	11

M

mail	55
— attachments	57
— creating	57
— mailbox	56
— reading and replying to	56
— sending	57
— setup	56
— widgets	57
mailbox	
— voice	44
Maps	77
— browsing	78
— changing views	79
— compass	80
— display elements	79, 87
— downloading maps	80
— driving routes	86
— Favourites	83
— finding locations	81
— location details	82
— navigating	86, 88
— organising places	83
— organising routes	83
— planning routes	88

— positioning	81	Ovi by Nokia	17, 51
— saving places	83	Ovi Mail	55
— saving routes	83	Ovi Music	74
— sending places	84	Ovi services	17
— sharing locations	85	Ovi Store	18
— synchronising	84	Ovi Suite	19
— traffic information	87	Ovi Sync	111
— voice guidance	85		
— walking routes	88		
mass memory	108		
meeting entries	93		
memory	107, 115		
— clearing	109, 115		
menus	38		
message reader	54		
messages	52, 53, 115		
— audio	53		
— conversations	54		
— sending	52		
MMS (multimedia message service)	52		
movies	67		
multimedia messages	52		
multitasking	24		
music	72, 74		
— playlists	73		
My Card	50		
N			
news feeds	58		
Nokia account	17		
Nokia Ovi Suite	19		
Nokia support information	113		
Nokia's Ovi services	17		
Notes	96		
notification light	32		
O			
office applications	94, 95, 96		
offline profile	32		
Ovi account			
<i>See Nokia account</i>			
P			
personalising your device	34, 35, 36, 37		
Phone switch	18, 112		
phonebook			
<i>See contacts</i>			
Photo editor	66		
photographs			
<i>See pictures</i>			
pictures			
— copying	18, 102, 112		
— editing	66		
— location information	63		
— printing	67		
— sending	65, 101		
— sharing	61		
— taking	63, 64		
— viewing	65		
— viewing on a TV	68, 69		
PIN codes	114		
playlists	73		
positioning information	62		
powering device on/off	16, 114		
printing	67		
profiles	34, 35		
— creating	35		
— offline	32		
— personalising	34, 35		
PUK codes	114		
Q			
Quickoffice	94, 95		

R		synchronisation	51, 110, 111
radio	75, 76, 77	T	
RDS (radio data system)	75, 77	taking pictures	
rebooting	114	<i>See Camera</i>	
recording		tasks	92
— calls	43	text input	9, 24, 26, 27, 28, 29
— sounds	75	text messages	52
— videos	64	themes	35
recycling	116	time and date	91
remote drives	105	tones	
remote lock	112	— personalising	34
remote locking	113	touch screen	21, 26, 27
restoring settings	114	transferring content	18, 71, 74, 102, 112
ringing tones	34, 43, 50	troubleshooting	115
S		turning device on/off	16, 114
searching	32	TV	
— contacts	38	— viewing pictures and videos on	68, 69
— radio stations	76	— watching programmes	71
security code	112, 114	U	
sensor settings	43	updates	
settings		— applications	106
— access points	97	— device software	106, 107
— language	54	USB	10
— restoring	114	USB connection	102, 103
sharing, online	61, 62	user guide	19
shortcuts	23, 29, 37	V	
silent profile	34	video calls	39
SIM card	51	videos	70
— inserting	12	— copying	18, 71, 102, 112
— removing	12	— editing	66, 67
slideshow	67	— location information	63
SMS (short message service)	52	— playing	71
social networks	59, 60, 61, 62	— recording	64
software	109	— sending	101
software updates	106, 107	— sharing	46, 47, 61
speakerphone	11	— watching	65
speed dialling	41		
status updates	61, 62		
support	19, 113		
switching device on/off	16, 114		

— watching on a TV	68, 69
virtual keyboard	26
virtual keypad	27
voice calls	
See <i>calls</i>	
voice commands	41
volume control	11
VPN (virtual private network)	104

W

wallpaper	36
web	
See <i>Internet</i>	
web browser	57, 115
web connection	97
web feeds	58
widgets	57, 71
WLAN (wireless local area network)	98, 99
world clock	91, 92

Z

Zip manager	97
-------------	----