

## NOMAD IIc family of Digital Audio Player/Voice Recorder

Information in this document is subject to change without notice and does not represent a commitment on the part of Creative Technology Ltd. No part of this manual may be reproduced or transmitted in any form or by any means, electronic or mechanical, including photocopying and recording, for any purpose without the written permission of Creative Technology Ltd. The software described in this document is furnished under a license agreement and may be used or copied only in accordance with the terms of the license agreement. It is against the law to copy the software on any other medium except as specifically allowed in the license agreement. The licensee may make one copy of the software for backup purposes only.

The Software License Agreement is found in a separate folder on the installation CD.

Copyright © 1998-2001 by Creative Technology Ltd. All rights reserved.

Version 3.0

October 2001

Sound Blaster, the Sound Blaster logo, and the Creative logo are registered trademarks, and Sound Blaster Live! and EAX are trademarks of Creative Technology Ltd. in the United States and/or other countries.

NOMAD is a registered trademark of Aonix and is used by Creative Technology Ltd. and/or its affiliates under license.

Microsoft and Windows are either registered trademarks or trademarks of Microsoft Corporation in the United States and/or other countries.

Macintosh, Mac, Apple, iTunes and FireWire are trademarks of Apple Computer, Inc., registered in the U.S. and other countries.

Intel and Pentium are trademarks of Intel Corporation in the U.S. and other countries.

CDDB is a trademark of CDDB, Inc.

SmartMedia is a trademark of Toshiba Corp.

EMusic, Emusic.com, and the EMusic.com logo are trademarks of EMusic.com Inc.

MP3.com and the MP3.com logo are trademarks of MP3.com, Inc.

Audible and the Audible logo are trademarks of Audible, Inc.

audiohighway.com and the audiohighway.com logo are trademarks of audiohighway.com.

All other brand and product names listed are trademarks or registered trademarks of their respective holders.

All specifications subject to change without prior notice. Use of this product is subject to the limited warranty. Actual contents may differ slightly from those pictured.

# Contents

---

Introduction	
Your NOMAD IIc Player .....	i
System Requirements .....	ii
Document Conventions .....	ii
<b>1 Your NOMAD IIc Package</b>	
In the Package .....	1-1
Optional Accessories .....	1-2
Location of Controls .....	1-3
<b>2 Setting Up Your NOMAD IIc Player</b>	
Step 1: Insert Battery .....	2-1
Step 2: Connect Earphones to Player .....	2-1
Step 3: Put on Your Earphones .....	2-1
Step 4: Install Software .....	2-2
For Windows users .....	2-2
For Macintosh OS 9 users .....	2-2
For Macintosh OS X users .....	2-2
Step 5: Connect NOMAD IIc Player to PC .....	2-4
Step 6: Install NOMAD II Driver .....	2-5
For Windows users only .....	2-5
Step 7: Verify NOMAD II Driver installation .....	2-5
For Windows XP users .....	2-5
For all other Windows users .....	2-5
For Macintosh OS 9 users and Macintosh users that installed OS X over OS 9 .....	2-5
For Macintosh users that installed OS X only .....	2-6
Step 8: Download MP3/WMA Files to Your Player .....	2-6
For Windows users .....	2-6
For Macintosh users .....	2-7
Step 9: Listen to MP3/WMA songs .....	2-7
Step 10: Make a Voice Recording .....	2-7
NOMAD Detector .....	2-7
<b>3 Using Your NOMAD IIc Player</b>	
Power ON/OFF .....	3-1
Lock .....	3-1
Navigating & Accessing Menus .....	3-2
In MUSIC Submenu .....	3-3
To play an MP3 File .....	3-3
To repeat MP3 playback .....	3-3
To repeat a section of a track continuously .....	3-4
To use the DSP Equalizer .....	3-4
To erase an MP3 File .....	3-5
In VOICE Submenu .....	3-5
To change microphone input .....	3-5
To make a voice recording .....	3-6
To play a voice recording .....	3-6
To erase a voice recording .....	3-6
In INFORMATION Submenu .....	3-7

	To change the owner's name.....	3-7
	Navigating & Accessing SETTINGS Submenu .....	3-8
	To set Backlight on interval.....	3-9
	To turn on/off Backlight .....	3-9
	To set Contrast.....	3-9
	To set Power off when idle.....	3-10
	To set Audio output.....	3-10
	In TIME Submenu .....	3-11
	To set the date, time and day .....	3-11
<b>4</b>	<b>Using Creative PlayCenter 2 in Windows</b>	
	Introducing PlayCenter 2 .....	4-1
	To open PlayCenter 2.....	4-1
	Using PlayCenter 2 .....	4-2
	To download MP3/WMA files to your player ....	4-2
	To rip an audio CD into MP3/WMA files.....	4-2
	To transfer voice files from your player to your computer .....	4-2
	To delete files from your player .....	4-2
	To change PlayCenter 2's settings.....	4-2
	To format your Flash Memory Card (Creative SmartMedia).....	4-3
	To connect to the NOMAD website .....	4-3
<b>5</b>	<b>Using iTunes in Macintosh OS</b>	
	Transferring music files from iTunes to your NOMAD IIc player .....	5-2
	Transferring music files from your NOMAD IIc player to iTunes .....	5-3

<b>A</b>	<b>An MP3 Primer</b>	
	What is MP3? .....	A-1
	MP3 Conversion Process .....	A-1
	Extracting from Audio CD.....	A-1
	Encoding to MP3 .....	A-1
	Memory and Audio Quality .....	A-2
	MP3 Web sites .....	A-2
<b>B</b>	<b>Technical Specifications &amp; Troubleshooting</b>	
	NOMAD IIc Player DAP-3205/DAP-6406* .....	B-1
	Troubleshooting .....	B-2
<b>C</b>	<b>Handling Instructions</b>	
	Handling Instructions .....	C-1

# Introduction

---

## Your NOMAD IIc Player



Any reference to "NOMAD II" in your package's software, or elsewhere, also refers to the NOMAD IIc player.

Your NOMAD IIc player is a digital audio player for the new Internet generation. You do not need to carry a cassette tape or CD.

A key feature at the core of the NOMAD IIc is its programmability, designed to be virtually future-proof. By incorporating this upgradable feature, the NOMAD IIc can be programmed to support multiple digital audio formats, such as MP3 and Microsoft® Windows Media Audio (WMA) or software extensions that will be made available on [www.nomadworld.com](http://www.nomadworld.com).

The NOMAD IIc is designed for the active consumer, with features that emphasize quick setup and mobility. The new NOMAD IIc comes equipped with a Universal Serial Bus (USB) connection for faster transfer rates and hot-plugging connectivity, a high-quality backlit LCD, and SSFDC (Solid State Floppy Disk Card) compliant Flash Memory Card (Creative SmartMedia™), supported in all

configurations. And like the first NOMAD, the NOMAD IIc features MP3 playback and voice recording capability.

The sound in this light shock-resistant player will not skip or stretch at all, even during vigorous exercise or after repeated playbacks. The ID3 Tag information such as song title and artist name is also conveniently displayed on the LCD for easy reference.

NOMAD IIc also comes bundled with the following software and songs:

- ❑ Creative PlayCenter™ 2, which manages your favorite digital audio files on your computer and NOMAD IIc. It is also an integrated encoder for ripping audio CD tracks into compressed digital audio files.
- ❑ Macintosh® iTunes®, which features a powerful interface for importing music CDs to MP3 files, creating playlists, burning music CDs, moving music to your NOMAD IIc player as well as for listening to hundreds of radio stations on the Internet.

You can download more MP3 files through worldwide web sites or online services to play them back on your NOMAD IIc.

For more details on MP3, please refer to *Appendix A, "An MP3 Primer"*.



Information is correct at time of printing. For the latest information, visit [www.nomadworld.com](http://www.nomadworld.com). For the latest information about Apple® products, including iTunes, visit [www.apple.com](http://www.apple.com).

# System Requirements

## For PC:

- Microsoft Windows<sup>®</sup> 98, Windows 98SE, Windows 2000, Windows Millenium (Me) or Windows XP
- 200MHz processor or higher (Intel<sup>®</sup> Pentium<sup>®</sup> II and above recommended for MP3 encoding)
- SVGA graphics adapter 256 colours, 800 x 600
- Internet connection for Internet content downloading or CDDDB<sup>™</sup> support (any charges incurred are the responsibility of the end user)
- 64MB RAM (128MB recommended)
- USB port
- 30MB free hard disk space (more for audio content storage)
- Installed mouse
- CD-ROM drive with digital audio extraction support

## For Mac<sup>®</sup>




- Mac OS 9.0.4 or higher, Mac OS 9.1 (recommended) or Mac OS X (Version 10.0.4)
- iMac<sup>™</sup>, G3 or higher
- Internet connection for Internet content downloading or CDDDB support (any charges incurred are the responsibility of the end user)

- 64MB RAM (128MB recommended)
- USB port
- USB Manager version 1.2 or higher
- 6MB free hard disk space (more for audio content storage)
- Installed mouse
- CD-ROM drive with digital audio extraction support

# Document Conventions

The following typographical conventions are used throughout this document.

**Table i:** *Icons.*

This symbol	Indicates
	A note.
	A warning.
	A tip.

## Your NOMAD IIc Package

---

### In the Package

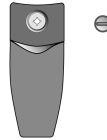
Your NOMAD IIc player package contains the following items:

1



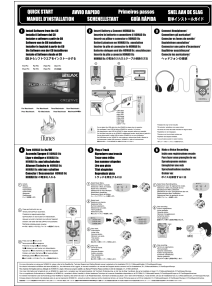
NOMAD IIc player

2



Belt clip & Belt clip screw

3



Quick Start guide

4



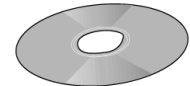
1 AA size battery

5



USB cable

6



1 Installation CD

Figure 1-1: NOMAD IIc player package.

# Optional Accessories

For the latest list of accessories, please visit [www.nomadworld.com](http://www.nomadworld.com).



Please purchase original Creative Flash Memory Cards (Creative SmartMedia) to ensure 100 percent compatibility with your NOMAD IIc player.

Availability of Flash Memory Cards (Creative SmartMedia) varies according to region.

1

## Docking Station Kit



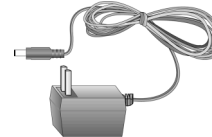
Docking station



USB cable



1 rechargeable NiMH battery



AC Adapter

2



Additional Flash Memory Card  
(Creative SmartMedia)

3

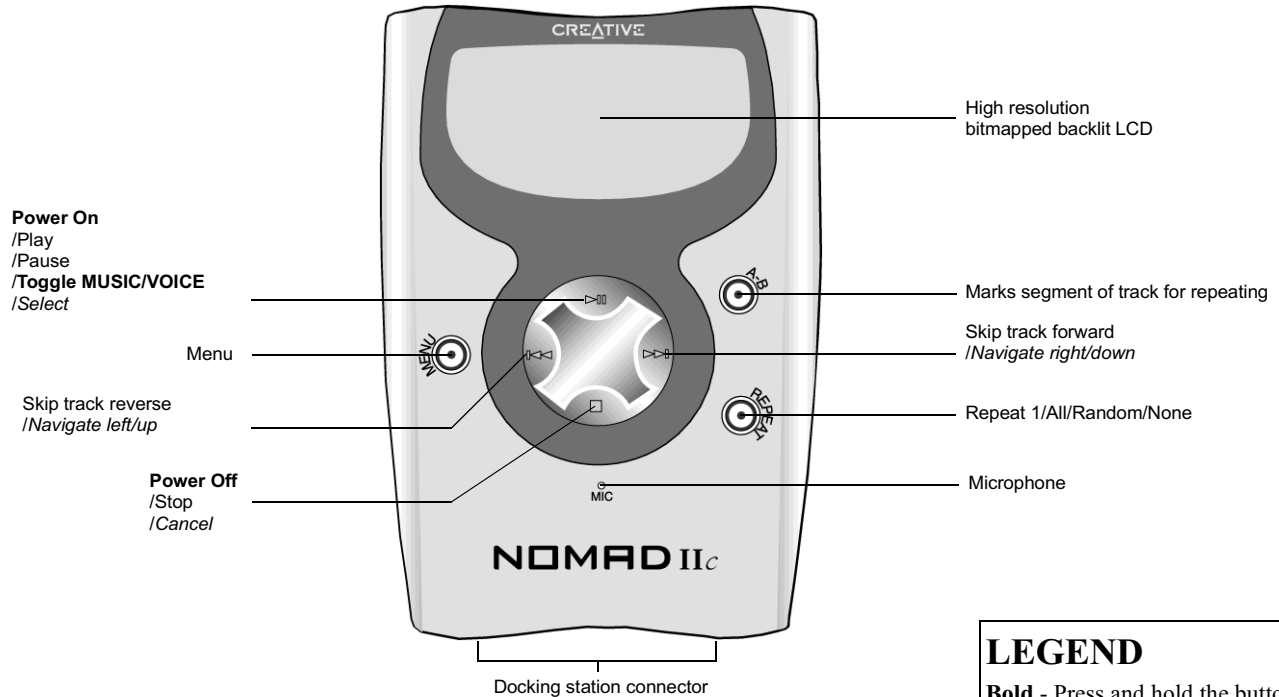


Car Cassette Adaptor Kit

Figure 1-2: Optional accessories.

# Location of Controls

## PLAYER - Front View

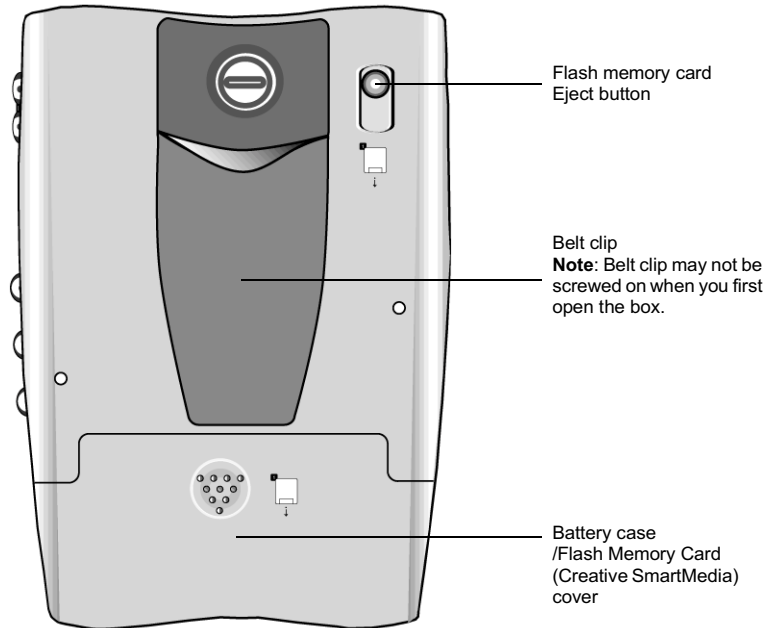


**LEGEND**  
**Bold** - Press and hold the button  
*Italics* - For menu navigation

Figure 1-3: Front view of the player.

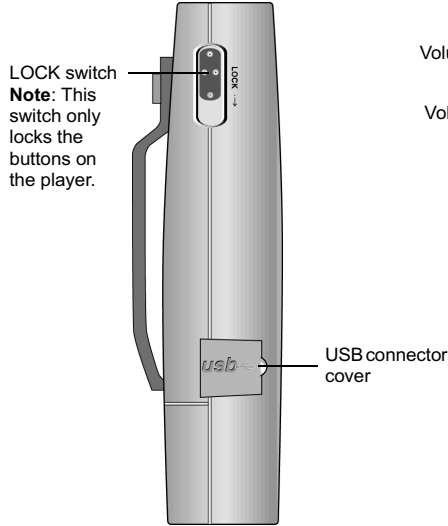


## PLAYER - Rear View

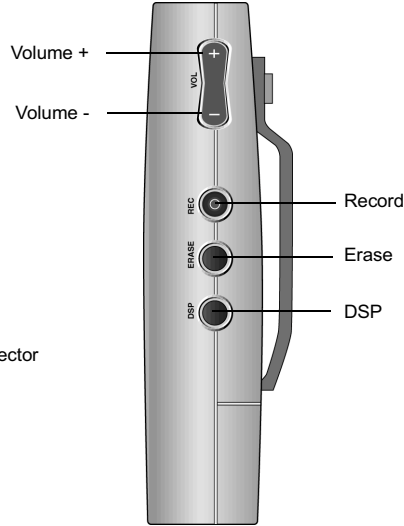


*Figure 1-4: Rear view of the player.*

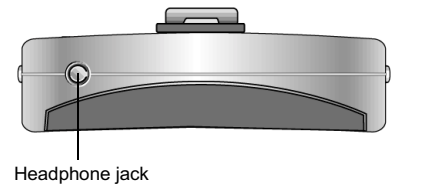
### Left View



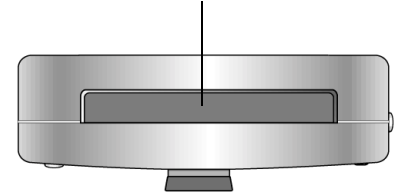
### Right View



### Top View



Docking station connector rubber cover  
**Note:** The docking station connector is used only together with the optional docking station that also acts as a battery recharging station.



### Bottom View

Figure 1-5: Left, right, top and bottom views of the player.

# Setting Up Your NOMAD IIc Player

---

MP3/WMA files can be stored in your player's internal memory or in a supported Flash Memory Card (Creative SmartMedia). Depending on the model of the player that you have purchased, either the player or the Flash Memory Card (Creative SmartMedia) is preloaded with a "Welcome to NOMAD" MP3 song. So, you can start enjoying MP3 songs without connecting your NOMAD IIc player to a PC. Just follow these steps and you can get up and running straightaway:

## Step 1: Insert Battery

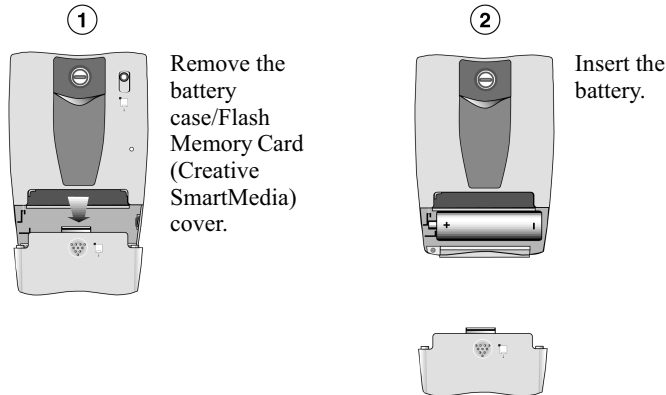


Figure 2-1: Insert battery.

## Step 2: Connect Earphones to Player



Earphones may not be included in your package.

## Step 3: Put on Your Earphones

You may want to skip to "Step 9: Listen to MP3/WMA songs" on page 2-7 to start listening to audio with your NOMAD IIc player.

## Step 4: Install Software



Any reference to "NOMAD II" in your package's software, also refers to the NOMAD IIc player.

### For Windows users



Install all the programs in the installation CD before accessing the CD or the MP3 content CD.

1. Insert the Creative NOMAD IIc installation CD into the CD-ROM drive. If the Setup program does not run automatically, do steps 2 through 3. Otherwise, skip to step 4.
2. Click **Start** -> **Run**.
3. In the **Run** dialog, type D:\CTRUN\CTRUN.EXE (where D:\ is your CD-ROM drive) and click **OK**. The **Creative NOMAD II** setup screen appears, listing the languages supported by the software.
4. Click the language you want. The second **Creative NOMAD II** setup screen appears, selecting by default all applications to be installed.
5. Select the applications you want to install and click the Right Arrow button to start the installation. The **Creative Product Registration** dialog box appears.
6. Follow the instructions on the screen.

7. When prompted to restart your system, leave the CD in the CD-ROM drive, select the **Yes, I want to restart my computer now** option and then click the **Finish** button.

### For Macintosh OS 9 users



Macintosh OS 9 users who want to install iTunes must install Version 1.1 of the application.

1. Insert the Creative Installation CD into your CD-ROM drive. The **NOMAD** icon appears on your desktop.
2. Double-click the **NOMAD** icon. The **NOMAD** window appears.
3. Double-click the **iTunes** folder. The **iTunes** window appears.
4. Double-click the **iTunes v1.1 for Mac OS 9** folder. The **iTunes v1.1 for Mac OS 9** window appears.
5. Double-click the language folder you want. For example, if you want to install the English version of iTunes, double-click the **English** folder. The respective language window appears. For example, if you double-click the **English** folder, the **English** window appears.
6. Double-click the **Install iTunes** icon. The **License** window appears.
7. Read the Software License Agreement, then click **Accept** if you accept the terms. The **Read Me** window appears.

8. Read the information provided, then click **Continue**. The **Install iTunes** window appears.
9. The **Easy Install** option is selected by default. This installs the iTunes application with audio CD authoring support. The other option, **Custom Install**, installs the iTunes application with CD authoring support and audio CD authoring support for USB/FireWire® CD-RW drives.
10. Click the installation option you want, then click **Install**. A dialog box appears, prompting you to confirm installation of audio CD authoring support.
11. Click **Proceed**. A message box appears informing you that the installation has been launched.
12. After installation, a dialog box appears, prompting you to restart your system. Click **Restart** to restart your system.
13. After restarting, the **iTunes** window appears. Double-click the **iTunes** icon to launch the application.

### For Macintosh OS X users



Macintosh OS X users who want to install iTunes must install Version 1.1.1 of the application.

1. Insert the Creative Installation CD into your CD-ROM drive. The **NOMAD** icon appears on your desktop.
2. Double-click the **NOMAD** icon. The **NOMAD** window appears.

3. Double-click the **iTunes** folder. The **iTunes** window appears.
4. Double-click the **iTunes v1.1.1 for OS X** folder. The **iTunes v1.1.1 for OS X** window appears.
5. Double-click the **iTunes for Mac OS X.smi** icon. The **Software License Agreement** window appears.
6. Read the agreement, then click **Agree** if you agree to the terms. The **iTunes for Mac OS X** window appears.
7. Double-click the **iTunes for Mac OS X** folder. The **iTunes for Mac OS X** window appears.
8. Double-click the **iTunes.pkg** icon. The **Install iTunes for Mac OS X** window appears, prompting you to type in the administrator password.
9. Type in the password, then click **OK**. An introduction to iTunes appears in the **Install iTunes for Mac OS X** window.
10. Read the introduction, then click **Continue**. The iTunes readme text appears in the **Install iTunes for Mac OS X** window.
11. Read the readme text, then click **Continue**. The **Software License Agreement** appears in the **Install iTunes for Mac OS X** window.
12. Read the Software License Agreement, then click **Continue**. A dialog box appears, asking you if you agree to the terms.
13. Click **Agree** if you agree to the terms. Icons representing possible installation locations in your system appear in the **Install iTunes for Mac OS X** window.
14. Click the appropriate icon, then click **Continue**.
15. Click **Install** to start installation. After installation, click **Close** to close the window.
16. Click the **iTunes** icon on the Dock, then click **Open iTunes** to launch the application.



Creative's NOMAD players support Apple's iTunes Digital Music Software for Mac OS 9 and Mac OS X. Newer versions of iTunes can be downloaded for free at <http://www.apple.com/itunes/>

## Step 5: Connect NOMAD IIc Player to PC



You need not switch off your computer when you connect your NOMAD IIc player to the PC since USB is Plug-and-Play.

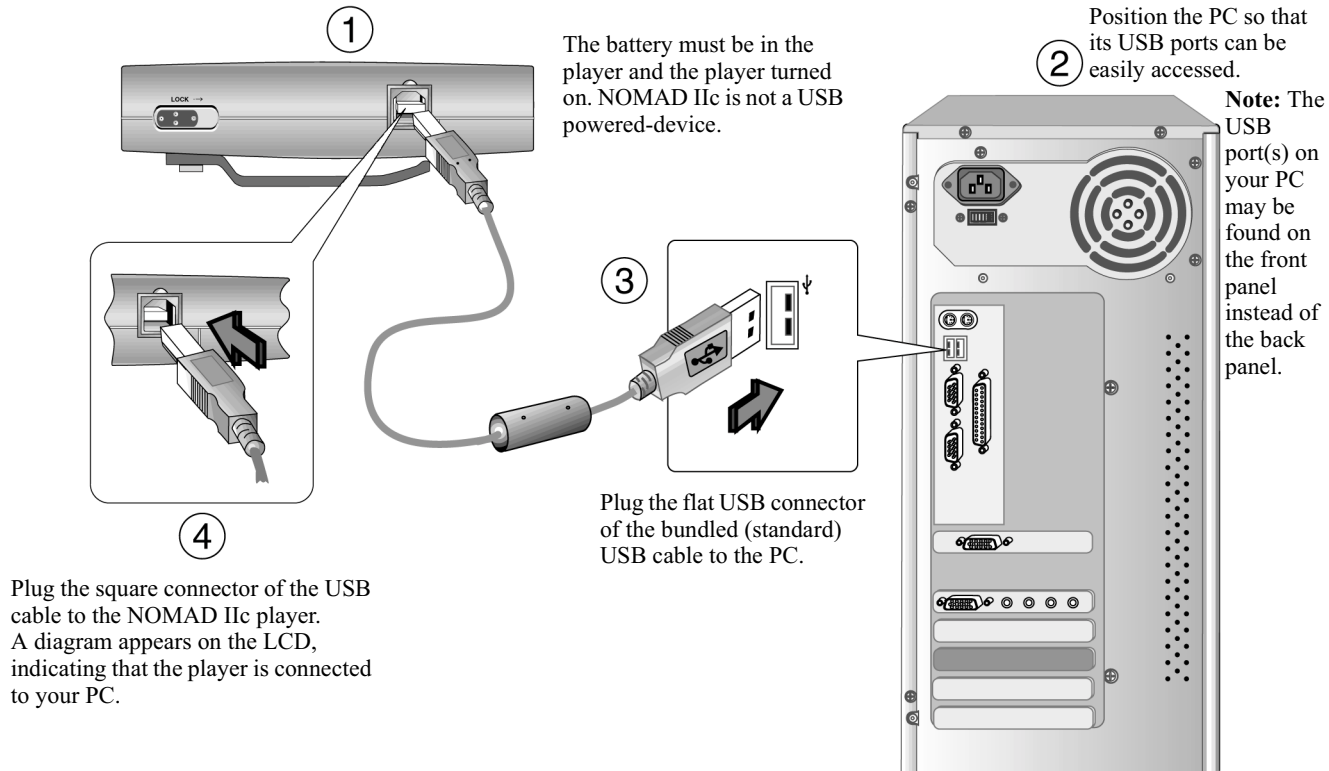


Figure 2-2: Connecting the NOMAD IIc player to a PC.

## Step 6: Install NOMAD II Driver



NOMAD IIc uses the "NOMAD II" driver.



Skip this step if you are a Macintosh user; installing the software as instructed in "Step 4: Install Software" on page 2-2, would have already installed the drivers necessary for your NOMAD IIc to work with your Macintosh.

### For Windows users only

Connect your NOMAD IIc player to your PC. Windows should automatically install the NOMAD II drivers.

## Step 7: Verify NOMAD II Driver installation

### For Windows XP users

1. Click **Start** -> **Control Panel**.
2. In the **Control Panel** window, click **Performance and Maintenance**.
3. Click "See basic information about your computer".
4. In the **System Properties** window, click the **Hardware** tabbed page.
5. Click **Device Manager**.

6. Double-click **Universal Serial Bus controllers**, and then check that **Creative NOMAD II** is present, as shown in Figure 2-3 below.

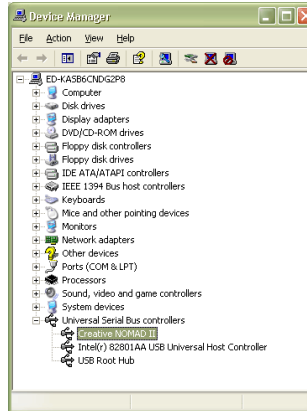


Figure 2-3: Correct installation of Creative NOMAD II driver in Windows XP

### For all other Windows users

1. Click **Start** -> **Settings** -> **Control Panel**.
  2. In the **Control Panel** window, double-click the **System** icon.
  3. For Windows 98, Windows 98 SE and Windows Me users, in the **System Properties** dialog box, click the **Device Manager** tab.
- For Windows 2000 users, in the **System**

**Properties** dialog box, click the **Hardware** tab, followed by the **Device Manager** button.

4. In the **Device Manager** tabbed page, double-click **Universal Serial Bus controllers**, and then check that **Creative NOMAD II** is present as shown in Figure 2-4 below.

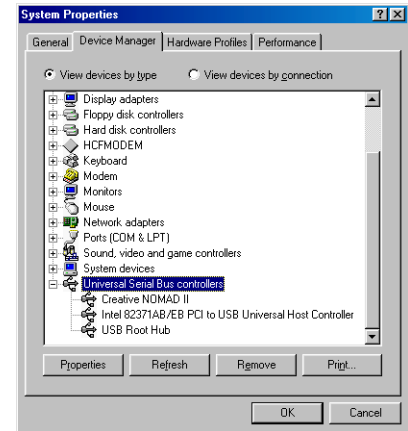


Figure 2-4: Verify that Creative NOMAD II driver is installed correctly.

### For Macintosh OS 9 users and Macintosh users that installed OS X over OS 9

1. On the desktop, double-click the hard disk icon where iTunes has been installed. The hard disk window appears.

2. Double-click the **System Folder** icon. The **System Folder** window appears.
3. Double-click the **Extensions** icon. The **Extensions** window appears.
4. Be sure that the **NOMAD II USB Driver** icon is listed.  
**Note:** Icons for other NOMAD players are also listed, representing the additional drivers installed during the setup.

## For Macintosh users that installed OS X only

1. On the desktop, double-click the hard disk icon where OS X has been installed. The hard disk window appears.
2. Double-click the **Applications** folder. The **Applications** window appears.
3. While pressing <Control>, click the **iTunes** icon. A menu appears.
4. Click **Show Package Contents**. The **iTunes** window appears.
5. Double-click the **Contents** folder. The **Contents** window appears.
6. Double-click the **Plug-ins** folder. The **Plug-ins** window appears.
7. Be sure that the **NOMAD II Plugin.bundle** icon is listed.  
**Note:** The NOMAD Jukebox icon is also listed, representing the additional driver installed during the setup.

## Step 8: Download MP3/WMA Files to Your Player For Windows users

1. To start PlayCenter 2, double-click the **Creative PlayCenter 2** icon or connect the USB cable from your PC to your NOMAD IIc player. By default, the **PC Music Library** appears in PlayCenter 2's **Main Window** and the **Transfer Window**. Ensure that you have MP3/WMA files in your computer.
2. Click the **NOMAD II** button on the **Transfer Window** (see Figure 2-5).
3. Select the songs you want to download to NOMAD IIc in the **Main Window**.
4. Click the lower **Transfer** button.

After downloading the songs, just disconnect your NOMAD IIc player from your computer and you can start enjoying the downloaded songs in the player.

For details on how to use Creative PlayCenter 2, refer to Chapter 4 and its online Help file.



**Note:** The song titles will only be displayed if the PC is connected to the Internet and you are registered with the CDDB website.

Figure 2-5: The PlayCenter 2 user interface.



## For Macintosh users

Refer to “Transferring music files from iTunes to your NOMAD IIc player” on page 5-2.

## Step 9: Listen to MP3/WMA songs

Press the MENU button on the player and you will see the NOMAD II main menu. The MUSIC icon is blinking, which means that it is selected by default. Press the PLAY button to go to the MUSIC submenu and then press the PLAY button again to enjoy clear digital music.

## Step 10: Make a Voice Recording

Thinking of finding out how your voice sounds on NOMAD IIc? Wait no more!

Press the MENU button to go to the NOMAD II main menu and then press the FORWARD button once to navigate to the VOICE icon. Press the PLAY button to go to the VOICE submenu. Press and hold the REC button to start the recording. To stop the recording, press the STOP button.



For more details on how to use your player more effectively, please refer to Chapter 3, “Using Your NOMAD IIc Player”.

## NOMAD Detector For Windows users only

NOMAD Detector is a small utility in the Taskbar (see Figure 2-6 below) that can detect a connection between the NOMAD IIc player and the PC via a USB cable. It is installed by default as part of Creative PlayCenter 2.



Figure 2-6: NOMAD Detector.

### To disable NOMAD Detector

1. Right-click the NOMAD Detector icon to show the shortcut menu. **Enable NOMAD Detector** is selected by default.
2. Click the **Enable NOMAD Detector** to disable it.

If you want to enable it again, click **Start -> Programs -> Creative -> Creative PlayCenter 2 -> Creative PDE Detector**.



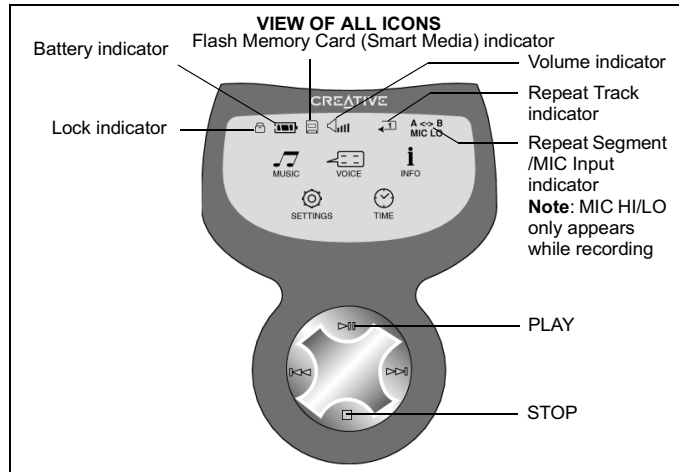
You can also click **Exit** to quit NOMAD Detector if you do not need to use the utility. The utility will appear the next time you restart your PC.



Ensure that the utility is enabled or launched, otherwise the PlayCenter 2 application will not launch automatically when the NOMAD IIc is connected to your computer.

# Using Your NOMAD IIc Player

## Power ON/OFF



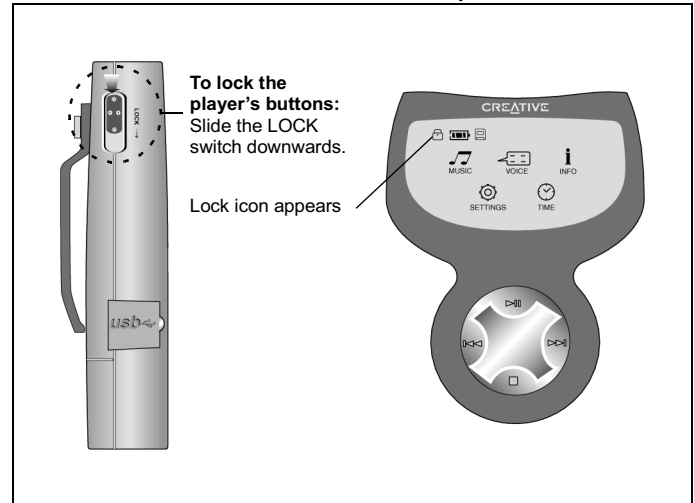
1. Press and hold the PLAY button to turn on the power. The NOMAD IIc main menu appears as shown above.
2. To turn off the power, press and hold the STOP button for more than 1 second.



If the player is idle in 3 minutes, it will turn off automatically. You can change the Power Off time in the SETTINGS submenu.

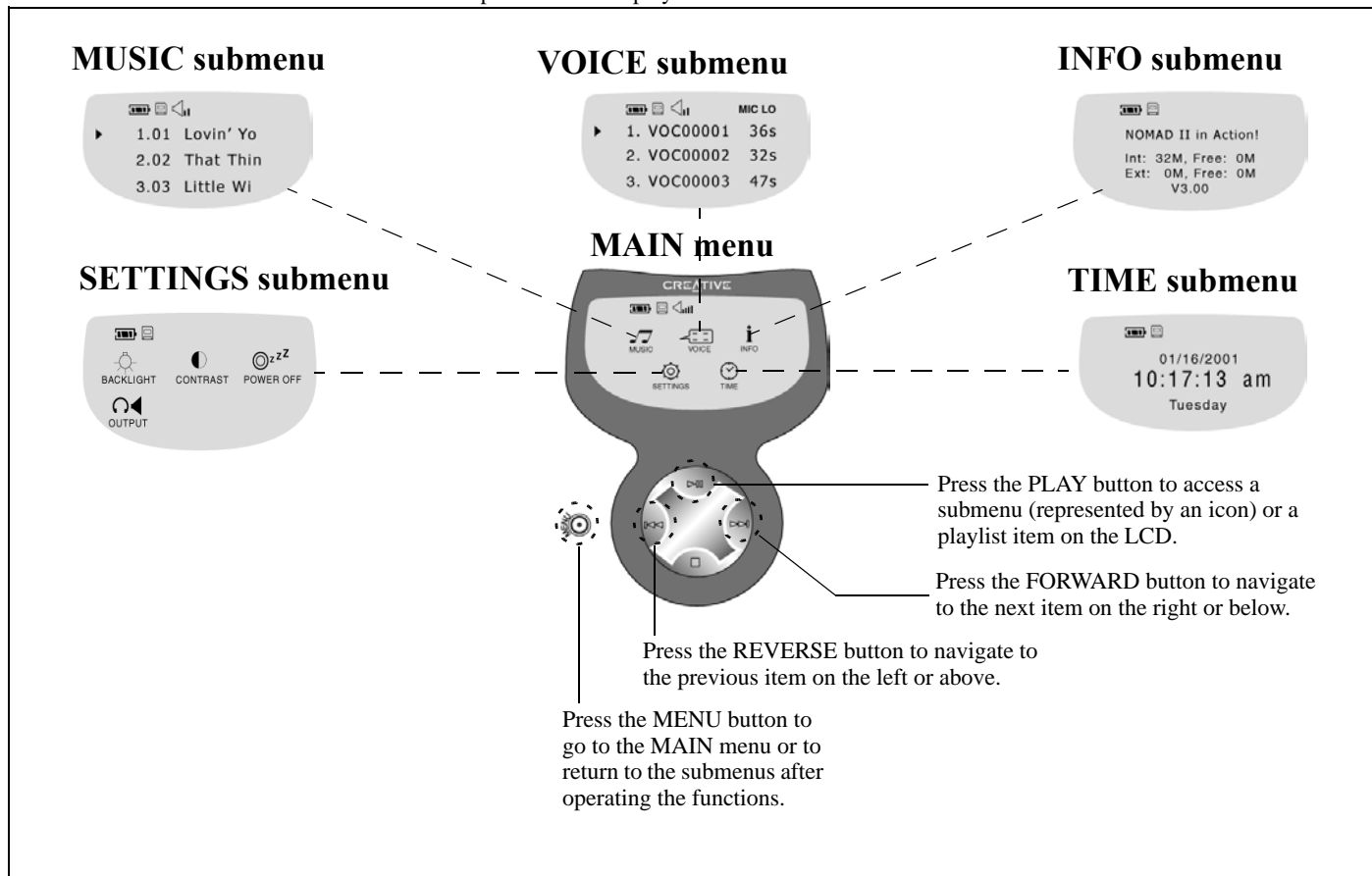
## Lock

Ensure that the LOCK switch is not on before you continue.



# Navigating & Accessing Menus

There are two levels of menus which control the operations of the player: the MAIN menu and five submenus.



## In MUSIC Submenu

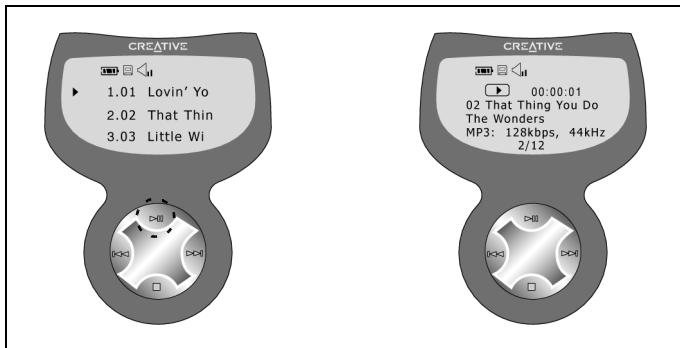
- ▶ To access MUSIC submenu, press the PLAY button when the MUSIC icon is blinking.

The MUSIC submenu appears, with the first file selected.



NOMAD IIc is designed to be future-proof as it is programmable. New audio formats can be downloaded into the player when they are available. Visit [www.nomadworld.com](http://www.nomadworld.com) for any new releases.

## To play an MP3 File



To play back MP3 files, they must first be downloaded in the NOMAD IIc player.

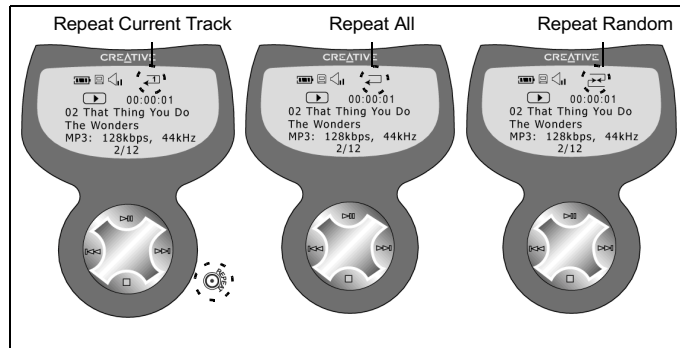
1. Press the PLAY button to play back the current track or press it again to pause.  
During Pause, the Pause icon appears.  
During the playback, the Play icon, time elapsed, song order, the song title, artist, bitrate, sampling rate, and DSP mode are displayed on the LCD.

2. Press the STOP button to stop the playback. If held down for longer than 1 second, the power will be turned off.



You can press and hold the PLAY button to toggle to the VOICE submenu and back to the MUSIC submenu.

## To repeat MP3 playback

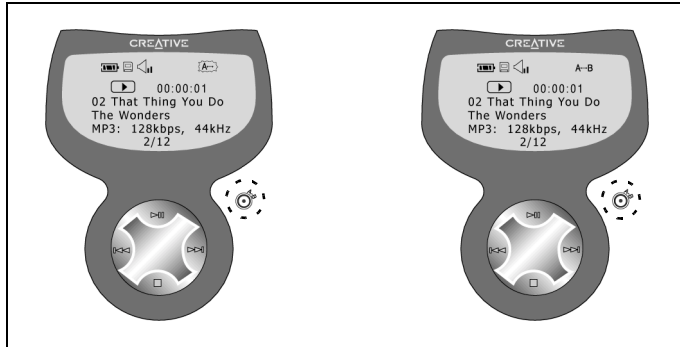


- ▶ Press the REPEAT button and then select either Repeat Current Track, Repeat All, or Repeat Random which appears in order.



To cancel the operation, press the REPEAT button until the Repeat indicator disappears from the LCD.

## To repeat a section of a track continuously

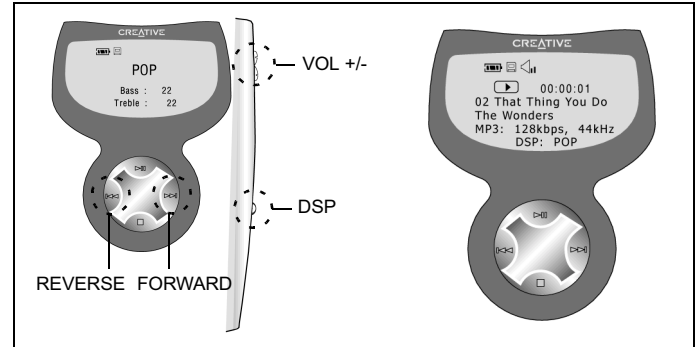


- ▶ Press the A-B button when a track is playing to mark the point where you want the section to start and press the button again where you want the section to end.



To cancel the operation, press the A-B button again. The A-B indicator disappears from the LCD and the track continues playing from the point where the section ends.

## To use the DSP Equalizer

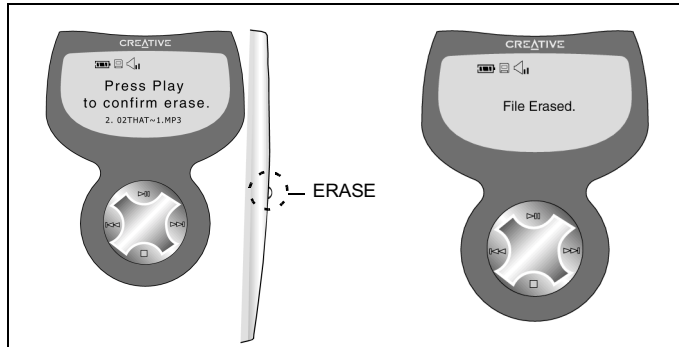


- ▶ Press the DSP button to select the Equalizer mode. Then press repeatedly to select NORMAL, USER, POP, ROCK, CLASSIC, and JAZZ, that appear in turn.



Only the USER option allows you to customize the Bass and Treble level. To set either level, press the FORWARD or REVERSE button to select the desired level and then press the VOL + or VOL - to increase or decrease the level.

## To erase an MP3 File



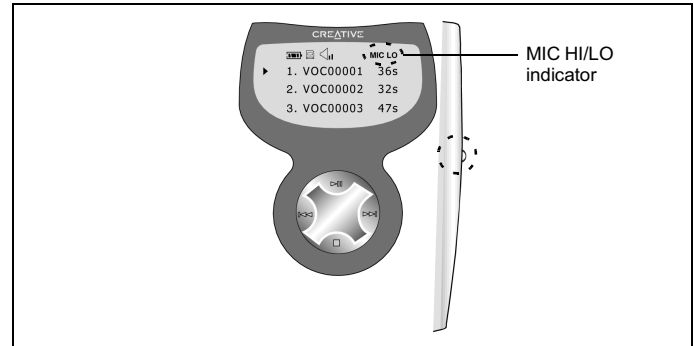
1. Press the MENU button to go to the MUSIC submenu.
2. Select the desired track using the FORWARD or REVERSE button.
3. Press the ERASE button.  
A confirmation message appears on the LCD.  
Press the PLAY (Select) button to erase.
4. To cancel, press any button other than the PLAY button. Or, do not press any button for 3 seconds.
5. When the action is cancelled, it returns to the MUSIC submenu.

## In VOICE Submenu

- ▶ To go to VOICE submenu, press the PLAY button when the VOICE icon is blinking.  
The VOICE submenu appears, with the first recording selected.

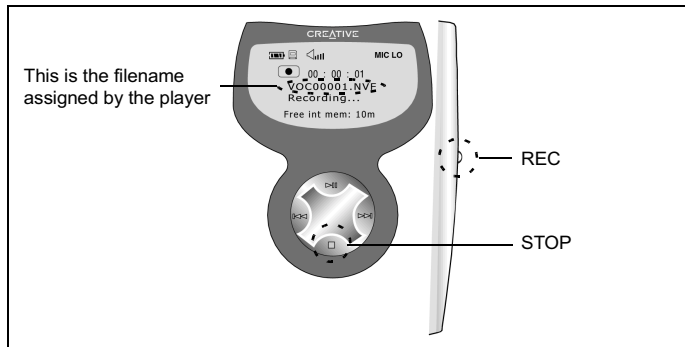
## To change microphone input

Microphone input affects the quality of a voice recording by adjusting the loudness of environment noise. Choose HI if you are recording in a quiet environment, and LO, in a noisy environment. The default input is LO.



- ▶ Press the DSP button.  
The microphone input switches to HI. Press again to switch it back to LO.

## To make a voice recording



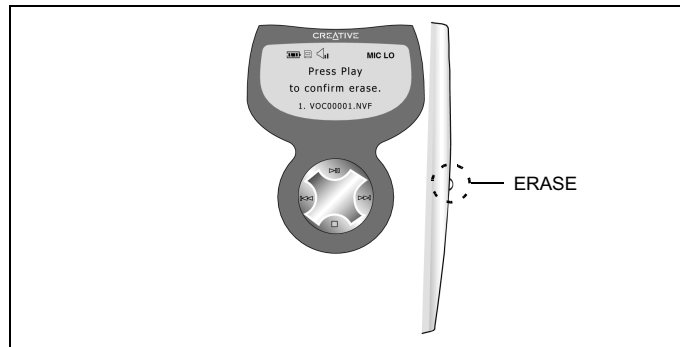
1. Press and hold the REC button to start the recording.  
The recording icon, time elapsed, the word “Recording”, and the file name appear on the LCD.
2. Press the STOP button to stop recording.

When the memory is full, a message appears and recording stops automatically.

## To play a voice recording

- ▶ Press the PLAY button to play back the current track. Press it again to pause. To resume playback of the current track, press the PLAY button.

## To erase a voice recording



1. Select the desired track using the FORWARD or REVERSE button.
2. After selecting a track, press the ERASE button.  
A confirmation message appears on the LCD.
3. Press the PLAY button to erase.
4. To cancel the operation, press any button other than the PLAY button or do not press any button for 3 seconds.
5. When the action is cancelled, it returns to the previous state.



Each of the track numbers following the erased one decreases by one.

## In INFORMATION Submenu



- ▶ To go to INFORMATION submenu, press the PLAY button when the INFO icon is blinking.

The INFO submenu appears with the date, the owner's name, the total memory and free memory of the Flash Memory Card (Creative SmartMedia), the firmware version and the remaining power of the battery displayed on the LCD.



You can change the owner's name using PlayCenter 2's Settings option.

### To change the owner's name

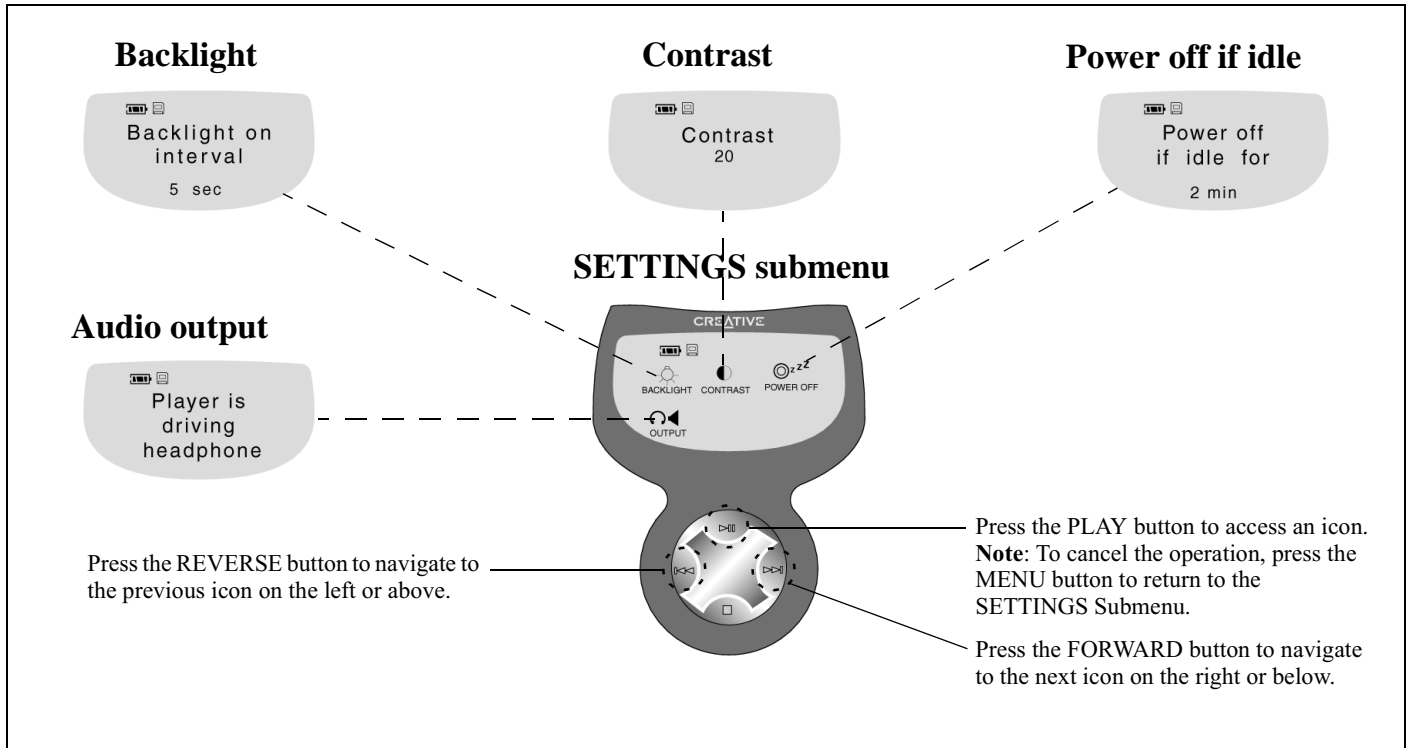
1. In PlayCenter 2's NOMAD II window, click the right arrow to scroll right until the **Settings** icon appears.
2. Click the **Settings** icon.  
The **Settings** dialog box appears.
3. Type in your name.



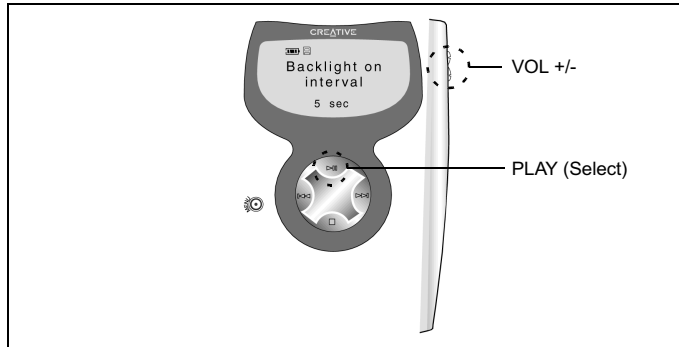
Go to INFORMATION submenu in your player to verify that the name you typed is changed in the LCD.



# Navigating & Accessing SETTINGS Submenu



## To set Backlight on interval



1. Navigate to the BACKLIGHT icon and then press the PLAY button.
2. Press the VOL + or VOL - buttons on the player to increase or decrease the duration the backlight is activated on the LCD.
3. Press the PLAY button to save the new settings.  
The word “Saved” appears on the LCD and the SETTINGS submenu appears.

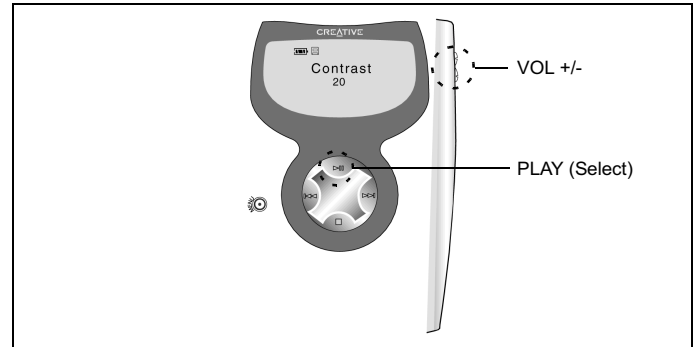


The maximum duration is 12 seconds.

## To turn on/off Backlight

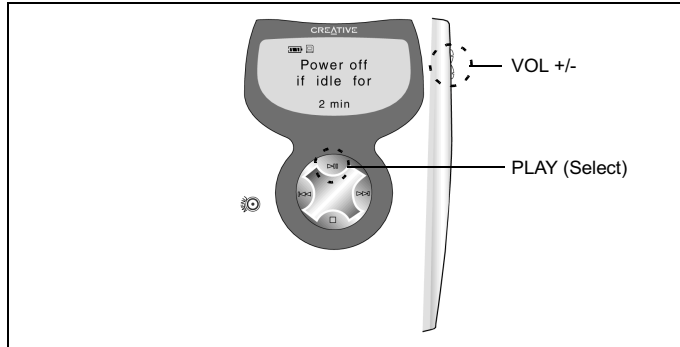
- ▶ Press and hold the MENU button to turn on/off the backlight.

## To set Contrast



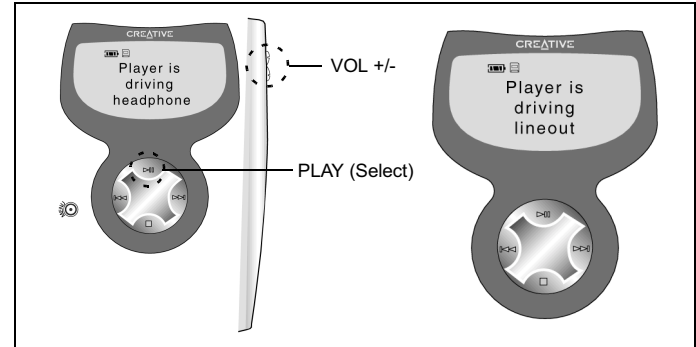
1. Navigate to the CONTRAST icon and then press the PLAY button.
2. Press the VOL + or VOL - buttons on the player to increase or decrease the contrast level.
3. Press the PLAY button to save the selected setting.  
The word “Saved” appears on the LCD and the SETTINGS submenu appears.

## To set Power off when idle



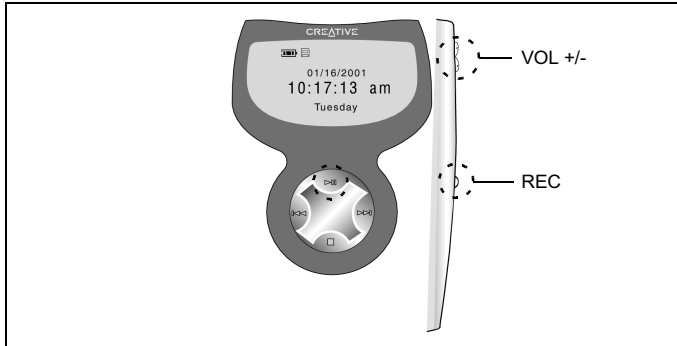
1. Navigate to the **POWER OFF** icon and then press the **PLAY** button.
2. Press the **VOL +** or **VOL -** buttons on the player to increase or decrease the time after which the player will switch off if there are no operations.
3. Press the **PLAY** button to save the selected setting.  
The word “Saved” appears on the LCD and the **SETTINGS** submenu appears.

## To set Audio output



1. Navigate to the **OUTPUT** icon and then press the **PLAY** button.
2. Press the **VOL +** or **VOL -** buttons on the player to select headphone output or line output for audio.
3. Press the **PLAY** button to save the selected output.  
The word “Saved” appears on the LCD and the **SETTINGS** submenu appears.

## In TIME Submenu



- ▶ To go to TIME submenu, press the PLAY button when the TIME icon is blinking.  
The submenu similar to the above diagram appears with the current date, time and day.

### To set the date, time and day

1. Press and hold the REC button to select setting mode.  
The Hour value blinks, ready to be set.
2. Press the VOL + or VOL - buttons on the player to increase or decrease the Hour value.
3. Press the FORWARD or REVERSE button to shift to the Minute, AM/PM, Day, and Date in order and repeat step 2 to adjust the values.
4. Press the PLAY button when the setting is completed.

That's all. We hope that you will enjoy using your NOMAD IIc player. Do remember to visit [www.nomadworld.com](http://www.nomadworld.com) for the latest update and enhancements for your player.

# Using Creative PlayCenter 2 in Windows

This chapter describes only selected tasks available with PlayCenter 2. For complete information, see the PlayCenter 2 Help file by clicking the question mark (?) on PlayCenter 2.

Details of the PlayCenter 2's interface are found in the **About PlayCenter 2** topic in the Help file.



Any reference to "NOMAD II" in PlayCenter 2 also refers to the NOMAD IIc player.

## Introducing PlayCenter 2

Creative PlayCenter 2 allows you to manage the contents on your NOMAD IIc:

- Transfer MP3 and other files to your NOMAD IIc
- Transfer the files (except protected MP3 or WMA files) on your NOMAD to your computer

## To open PlayCenter 2

1. Connect NOMAD IIc to your computer.

2. Start PlayCenter 2 by either of the following methods:

- Double-click the **PlayCenter 2** icon on the Windows desktop.
- Click **Start -> Programs -> Creative -> Creative PlayCenter 2 -> Creative PlayCenter 2**.



Figure 4-1: PlayCenter 2 user interface.

## Using PlayCenter 2

### To download MP3/WMA files to your player

Refer to “Step 8: Download MP3/WMA Files to Your Player” on page 2-5.

### To rip an audio CD into MP3/WMA files

1. Insert an audio CD into the CD-ROM drive.
2. Click the **Audio CD** button. The **CD Drive** Window appears.
3. In the **Main** window, click the boxes next to the tracks you want to rip.
4. To rip tracks to your hard disk, click either **My Computer** or **PC Music Library** in the **Transfer** window.
5. To rip tracks to your player, click the **NOMAD II** button in the **Transfer** window.
6. Locate your preferred folder and then click the **Rip To** button. The **Transfer Status** bar shows the progress of the ripping. The ripped MP3 song’s information is stored under **Albums, All Tracks and Artists** in **PC Music Library**.
7. To preview the song that you have just ripped, click the song title and then click the **Preview** icon.

### To transfer voice files from your player to your computer

1. In the **Main** Window, click the **My Computer** button and locate the folder or album where you store the voice files.
2. Click the **NOMAD II** button in the **Transfer** window.
3. Click the **Media** bar in the **Transfer** window and select the voice files you want to transfer from your player.
4. Click the upper **Transfer** button.

### To delete files from your player

1. In the **NOMAD II** view, select the file to be deleted.
2. Click the **Delete** icon in the **Toolbar**.

### To change PlayCenter 2’s settings

1. Click the **Settings** button to display the **Setting** dialog box.

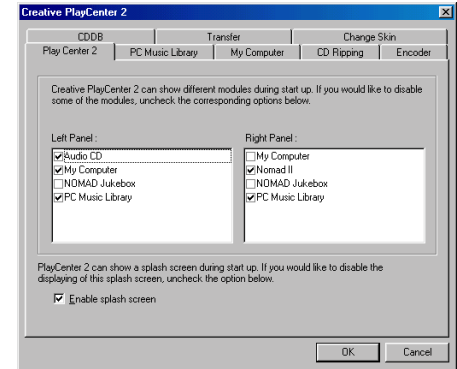


Figure 4-2: PlayCenter 2’s **Settings** dialog box.

2. Click any tab to display the settings on the tab:
  - PlayCenter 2**: Select modules to be displayed in either window.
  - PC Music Library**: Assign a folder for storing files on your computer’s hard disk.
  - My Computer**: Select the types of media files that you want PlayCenter 2 to display.
  - CD Ripping**: Configure a CD-ROM drive for digital audio extraction.
  - Encoder**: Select **MP3**, **WMA** or **WAV** compression methods.

- ❑ **CDDB:** Select whether or not to automatically retrieve CDDB information for an audio CD.
- ❑ **Transfer:** Select options for file transfer.
- ❑ **Change Skin:** Select different skins for the PlayCenter 2 user interface.

## To format your Flash Memory Card (Creative SmartMedia)



Formatting a Flash Memory Card (Creative SmartMedia) deletes any existing files.

1. Click the **NOMAD II** button in the **Transfer** window.
2. Click the **Media** bar and select **Flash Memory Card**.
3. With the Flash Memory Card (Creative SmartMedia) contents displayed, click the **Format** icon in the **Toolbar**.



**Format icon**

*Figure 4-3: Format icon.*

If the Flash Memory Card (Creative SmartMedia) is already formatted, you can add or delete files to and from the card.

If you change the Flash Memory Card (Creative SmartMedia), click the **Refresh** button to display the file information for the new card.

To check the status of the Flash Memory Card (Creative SmartMedia), click the **Media** bar and then click **Information**.

## To connect to the NOMAD website

- ▶ Click the **Internet** button on PlayCenter 2.



You must be connected to the Internet for your default Web browser to connect to [www.nomadworld.com](http://www.nomadworld.com).

# Using iTunes in Macintosh OS



Any reference to "NOMAD II" in iTunes also refers to the NOMAD IIc player.

The Macintosh iTunes application, included in your NOMAD IIc package, features a powerful interface for importing music CDs to MP3 files, creating playlists, creating music CDs, moving music to your NOMAD IIc player as well as for listening to hundreds of radio stations on the Internet.

Voice files recorded with your NOMAD IIc (denoted by the file name extension .NVF) can also be manipulated and played back with iTunes in the same way as any other supported music file.

You can launch the iTunes application after installing the software and setting up your player as described in "Setting Up Your NOMAD IIc Player" on page 2-1.

Extensive instructions on how to use iTunes can be found after launching the application, by clicking the **Help** menu, then **iTunes Help**.

When iTunes is launched, you will see the main interface as shown below:

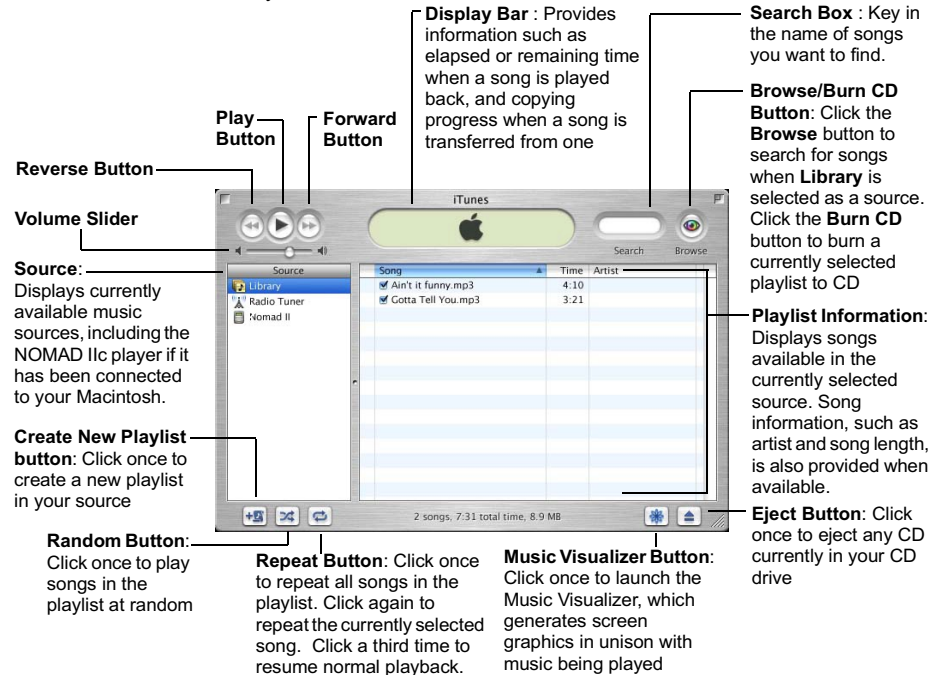


Figure 5-1: The iTunes interface.

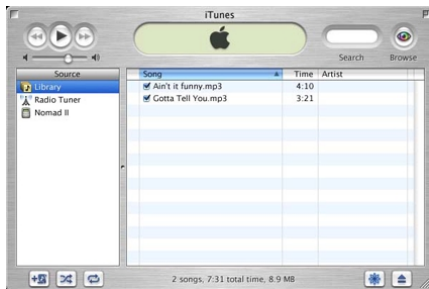


# Transferring music files from iTunes to your NOMAD IIc player

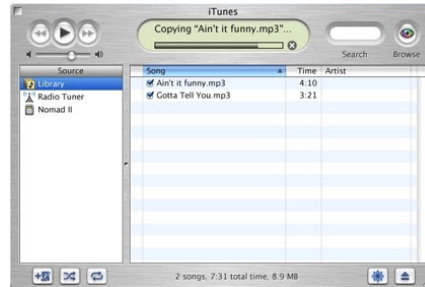
1. Launch the iTunes application if it has not already been launched. The iTunes interface appears, with **Library** selected as your source.



2. Connect your NOMAD IIc player to your Macintosh. A **NOMAD II** icon appears in the **Source** box.



3. With the **Library** icon selected, click and drag the songs you want to transfer from the playlist to the **NOMAD II** icon in the **Source** box.
4. The selected songs are transferred to your NOMAD IIc player.

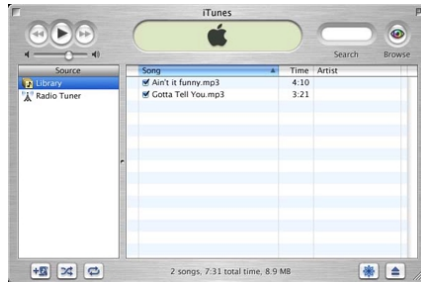


5. After the songs have been copied to your player, click the **NOMAD II** icon in the **Source** box. Be sure that the songs transferred to your player are listed.



# Transferring music files from your NOMAD IIc player to iTunes

1. Launch the iTunes application if it has not already been launched. The iTunes interface appears, with **Library** selected as your source.



2. Connect your NOMAD IIc player to your Macintosh. A **NOMAD II** icon appears in the **Source** box.



3. Click the **NOMAD II** icon in the **Source** box.

4. With the **NOMAD II** icon selected, click and drag the songs you want to transfer from the playlist to the **Library** icon in the **Source** box.
5. The selected songs are transferred to iTunes.



6. After the songs have been copied to iTunes, click the **Library** icon in the **Source** box. Be sure that the songs transferred to iTunes are listed.



# An MP3 Primer

---

## What is MP3?

MP3 is an acronym for Moving Picture Experts Group (MPEG) Layer 3, a type of audio data compression that can reduce digital sound files by a 12:1 ratio with virtually no loss in quality. It is an efficient way to store high-quality music or other audio content on your computer.

MP3 files can be very small and yet retain a high sound quality. MP3 files usually have the extension .mp3, and can be downloaded from the Internet, or can be legally made for personal use from the audio CDs that you purchased.



It is illegal to encode MP3 files for trade or sale unless you have the expressed and explicit permission of the copyright holder(s).

## MP3 Conversion Process

### Extracting from Audio CD



You must have a CD-ROM drive that can extract the audio data from an audio CD.

Audio CD extraction is the first phase in the MP3 conversion process. It is the reading of data off an audio CD and storing it temporarily on your hard drive.

You need an application that can direct the CD-ROM drive to extract this audio data. This program is known as a “ripper”. It reads the data off the audio CD and in some cases stores it in a file.

The duration of the audio CD extraction phase depends on many factors. The speed of a CD-ROM drive is one of the most important elements in overall extraction speed. The speed ratings commonly seen on CD-ROM drives—like 8X, 24X, and so on—refers to the speed in reading data CDs or CD-ROMs. Your particular drive may be fast for non-audio data, but slow at reading audio CD data.

Other factors are defects or scratches on an audio CD. When playing the audio CD in a CD-ROM drive, the data lost due to error is negligible. But when data is read incorrectly and put through the MP3 encoding phase, the distortion is highly noticeable. To avoid this distortion, the audio CD extraction software may read the data two or three times to make sure it was read correctly. This error-checking feature is an option in most audio CD data extraction software. Be sure error-checking is enabled in your audio CD extraction software.

### Encoding to MP3

The data extracted from an audio CD is one of the many types of data an MP3 encoder may process. Encoders typically expect data to be in .wav format. They read .wav data and output MP3 data. These data are put into an MP3 file.

MP3 encoding is the compressing of data by transforming it into the frequency domain. MP3 encoding/compression is quality lossy compression and the amount of loss (of

quality) is dependent upon the sampling rate of the output and the bitrate of the output. The higher the sampling and bitrates of each of these parameters, the better the quality of the sound.

## Memory and Audio Quality

The amount of memory and MP3 quality are related. The higher the quality required, the higher the bitrate needed. This leads to more data storage and memory requirements. The amount of memory required for the NOMAD IIc player is proportional to audio playback time.



We recommend that you set your encoding bitrate at 128 kbps (see Figure A-1) for optimal quality when you create MP3 files from audio CDs.

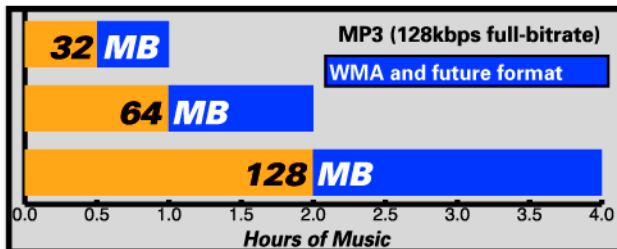


Figure A-1: Playing time versus encoding rate for different memory capacities.

## MP3 Web sites

Through web sites, you can download MP3 files either with or without charge and get information about the latest techniques and software related with MP3.

Examples of web sites with MP3 content are:

- ❑ NOMAD World  
(<http://www.nomadworld.com>)
- ❑ EMusic  
(<http://emusic.com>)
- ❑ Audible Inc.  
(<http://www.audible.com>)
- ❑ Audio Explosion, Inc.  
(<http://www.audioexplosion.com>)
- ❑ AudioHighway.com  
(<http://www.audiohighway.com>)
- ❑ Big Heavy World  
(<http://www.bigheavyworld.com>)
- ❑ MP3.com  
(<http://www.mp3.com>)
- ❑ SINC Recordings  
(<http://www.sincrecordings.com>)
- ❑ Songs.com  
(<http://www.songs.com>)

# Technical Specifications & Troubleshooting

---

# B

## NOMAD IIc Player DAP-3205/DAP-6406\*

### Size (W x H x D)/ Weight

- ❑ 65 x 93 x 21 mm / 86.4g (without battery)

### Memory

#### Internal Memory

- ❑ DAP-3205: 32MB
- ❑ DAP-6406: 64MB

#### Type of removable memory

- ❑ 1 x Flash Memory Card (Creative SmartMedia) slot

#### Maximum memory\*\*

- ❑ DAP-3205: 96MB [32MB Internal Memory and 64MB Flash Memory Card (Creative SmartMedia)]
- ❑ DAP-6406: 128MB [64MB Internal Memory and 64MB Flash Memory Card (Creative SmartMedia)]

### Interface

- ❑ USB (using standard USB cable or via optional docking station)

### LCD Display

- ❑ 132 x 64 bitmapped backlit

### Standard Playback Usage

- ❑ 1 x AA battery
- ❑ 8-10 hours for MP3/voice playback (with alkaline battery)

### Signal to Noise Ratio

- ❑ 95 dB

### Frequency Response

- ❑ 20 Hz - 20 KHz

### Maximum Output

- ❑ 5-7 mW

### Harmonic Distortion Output

- ❑ 0.05% at 1 khz with 32 ohm load

### DSP

- ❑ 4 presets and 1 user setting: bass and treble control

### Audio Codec support

- ❑ MPEG Audio Layer 3 (MP3), Windows Media Audio (WMA) and future formats\*\*\*

### Firmware

- ❑ Flash based. User upgradable\*\*\*

### Voice Recording

- ❑ G721 ADPCM encoding at 32kbps. Up to 2 hours recording on 32MB internal memory

\* - Model number varies, depending on model purchased. Technical specifications for both models are identical except where specified.

\*\* - The maximum memory will vary depending on the Flash Memory Card (Creative SmartMedia) capacity

\*\*\* - Future audio codec support and firmware upgrades will be available via [www.nomadworld.com](http://www.nomadworld.com)

# Troubleshooting

## ***If you have a Media Card reader/writer, you may have problems reading the Flash Memory Card (Creative SmartMedia)***

### ***Cause***

- ❑ NOMAD IIc only supports SSFDC (Solid State Floppy Disc Card) format (FAT12).
- ❑ Windows 98 detects the Media Card reader/writer as an external removable drive in Windows Explorer. Thus, you can only format the Flash Memory Card (Creative SmartMedia) into FAT16 format and NOMAD IIc is unable to recognize the FAT16 format.

### ***Solution***

- ❑ To format the Flash Memory Card (Creative SmartMedia), you need to obtain a software utility from the Media Card reader/writer vendor that supports SSFDC format (FAT12).

## ***The NOMAD II button is not on the Transfer window of PlayCenter 2***

### ***Cause***

- ❑ It is disabled.

### ***Solution***

- ❑ To enable the NOMAD II button:
  1. Click the **Settings** button.
  2. Click the **PlayCenter 2** tab.
  3. Select the **NOMAD II** check box under **Right Panel**.
  4. Click the **OK** button.
  5. Exit PlayCenter 2.
  6. Restart PlayCenter2.  
The **NOMAD II** button appears.

## ***Upgrading your player's firmware sometimes causes the player to stop responding***

### ***Solution***

- ❑ To reset the player and upgrade the firmware again:
  1. Turn off the power.
  2. Activate the LOCK switch.
  3. Press and hold the STOP button and *do not release it*.
  4. Remove the battery from the player.
  5. Insert the battery and wait for 10 seconds.  
The words "Backup Mode" appears on the LCD.
  6. Release the STOP button.
  7. Connect your player to the PC.

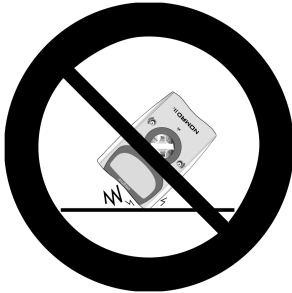
- ❑ Double-click the firmware file.  
The firmware upgrade is successful if the MAIN menu appears.

# Handling Instructions

---

## Handling Instructions

For your NOMAD IIc player to last longer,



### ***Do not subject the player to extreme force***

- Vibration during walking or exercising will not affect the NOMAD IIc player. However, dropping the player or dropping a heavy object on the player may result in distorted sound.



### ***Keep the player away from water at all times***

- The player may be damaged if water enters it.
- If the player comes in contact with water, wipe it immediately with a dry cloth. If the player set is not functioning, call Technical Support.



### ***Storing the player set***

- Avoid keeping the NOMAD IIc player, docking station, and the flash memory card in places with high humidity, strong magnetic field, or near high heat source(s).