

Xircom

REX[®] 6000
MicroPDA

Quick Start Guide

November 2000

©2000 Xircom, Inc. All rights reserved.

Neither this publication nor any part of this publication may be copied, photocopied, reproduced, translated or reduced to any electronic medium or machine-readable form without the prior written permission of Xircom.

Xircom and REX are registered trademarks of Xircom, Inc. All other product, brand, or trade names used in this publication are the property of their respective trademark holders.

Xircom reserves the right to make improvements and/or changes in the products and programs described in this Quick Start Guide at any time without notice.

The software described in this Quick Start Guide is furnished under a license and may be used or copied only in accordance with such license.

801-0307-001A 11/2000

Welcome to REX!

The REX® 6000 MicroPDA (Personal Digital Assistant) by Xircom is the world's smallest, lightest full-function MicroPDA. It's small enough to fit in your pocket, easy, and packed with features. With REX, you can:

- Store thousands of contacts, appointments, notes, and to-do items.
- Type information directly into REX or automatically copy data stored in your PC's personal organizer software.
- Download Web content to display on REX.
- Select items by touching the screen with your finger or a stylus.

This Quick Start Guide gives basic information about getting up and running with REX. For detailed information including how to use REX's features, view the online user guide using the instructions on page 14.

Important Handling Information

Xircom's REX warranty expressly excludes damage caused by accident or misuse. You will find the warranty in the online user guide. Please treat REX carefully and follow these guidelines:

- Do not bend, flex, or drop REX or strike it against another object.
- Do not carry REX in your pocket, briefcase, or handbag without its protective cover: It may break if you apply excessive pressure to it or if it strikes other objects.
- Do not allow objects other than your finger or the included stylus to press against the display.
- Keep REX away from water or harsh chemicals.

Installation Overview

There are five main steps to setting up REX:

1. Connect REX to your PC.
2. Install the REX software on your PC.
3. Register on **www.rex.net** for free content and services.
4. Configure the synchronization settings.
5. Synchronize the data between your PC and REX.

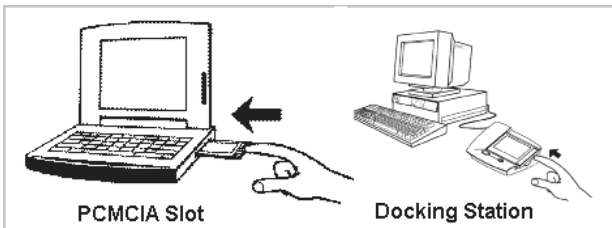
Step 1 – Connect REX to Your PC

If you plan to share data between REX and your PC's PIM (personal information manager program such as Microsoft Outlook), you should connect REX to your PC before installing the REX software. If you do not have a PIM, the installation will offer to install one for you.

Before connecting REX, write down the product ID number that appears on the back of REX. You will need it during the registration process.

My REX product ID number _____

- **If your PC has a PCMCIA slot:** Plug REX into the slot face up with the end opposite the buttons inserted first. You will see a series of dialog boxes for adding a new driver for a PCMCIA modem. Accept the default settings and select the **Next** button at each screen. When you see a **Finish** button, select it.
- **If you have the optional USB docking station:** Insert the REX installation CD into your CD-ROM drive. Plug the docking station into your PC's USB port. Insert REX 6000 into the docking station face up with the end opposite the buttons inserted first. Windows displays a new hardware wizard screen. At the first two screens, select **Next**. At the next screen, be sure *only* the **Specify location** button is selected. You will be prompted for a file location. Windows 98 users, type **x:\WIN98**, and Windows 2000 users type **x:\WIN2K** (be sure to substitute your CD-ROM drive letter for the x). At the remaining screens, select **Next**, **OK**, or **Finish**. You will go through this process with the hardware wizard three times, once for each driver to be installed. At the end of the procedure you will see the New Serial Port screen, listing Xircom REX Cradle. A green light will illuminate on the docking station. This completes the process. If you see a red light, re-insert the REX card and try again.
- **If you have the optional serial-port docking station:** Install the batteries in the docking station. Power your PC off. Then plug the docking station into your PC's serial port and power your PC back on. Insert the REX 6000 into the docking station face up with the end opposite the buttons inserted first.



Step 2 – Install REX Software on Your PC

To install the REX software:

1. If it's not already there, insert the REX CD into your PC's CD-ROM drive.
2. Select **Run** from Windows' Start menu. When the Run dialog box displays, type **x:\setup** (substitute your CD-ROM drive's letter for the x). Then click **OK**.
3. Select **Install your REX 6000** and follow the on-screen instructions.

A PIM is personal information management software that runs on your PC and stores contacts, appointments, memos etc. During the installation you will have three choices with respect to a PIM:

- **Intellisync PIM**—Choose this option if you do not have a PIM and you want to install the Intellisync PIM provided with REX.
- **Microsoft Outlook**—Choose this option if you have Microsoft Outlook (part of Microsoft Office) and you want to use it as your PIM. REX does not support Microsoft Outlook Express.
- **None/Other**—Choose this option if you want to use REX without a PIM or you have a PIM other than Microsoft Outlook. If you have another PIM, visit **www.rex.net**.

Follow the remaining on-screen instructions. When the installation is complete, you may optionally choose from the following selections:

- **View Documentation** – view the online user guide.
- **Visit www.rex.net for free services** – visit the REX Web site to read about updates and other information pertaining to REX. You can also sign up for Web services and register your product online. You will need the product ID number (see page 4).
- **Register your REX 6000** – register your REX card. You will need the product ID number (see page 4). This step is unnecessary if you register at **www.rex.net**.
- **Exit** – exits the install program.

When you are done with these options, select **Exit** and remove the CD-ROM from the drive.

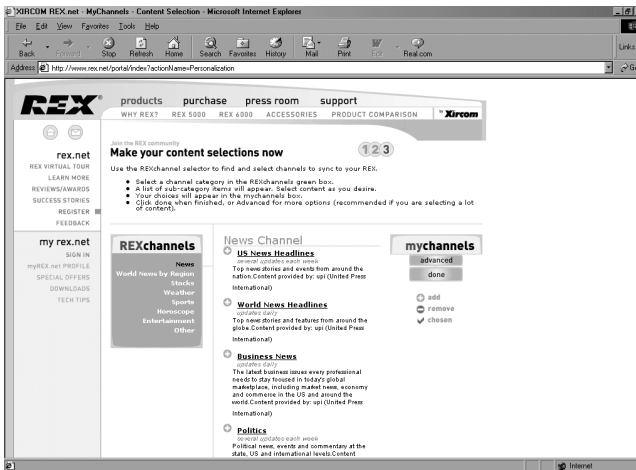
Step 3 – Register for Free REX Content and Services

If you did not visit **www.rex.net** during the installation, we encourage you to do so now. By registering online, you can access the following:

- **Service** – Update REX with daily news, sports, entertainment happenings, and stock quotes.
- **Knowledge** – Learn more about REX and download REX applications.
- **Community** – Free gifts, contests, exclusive access, and sneak previews, and a forum for sharing ideas with the REX community.

To register online:

1. Be sure you are logged on to the Internet.
2. Use your Web browser to go to **www.rex.net**.
3. At the opening screen, select **Join Now**.
4. Fill in the form on the sign-up screens and create a user name and password. Select **Next** at the bottom of the screens to continue.
5. You will see a screen where you can select content to download onto REX. Follow the on-screen instructions. The content will be downloaded when you synchronize REX with your PC.



Be sure to visit **www.rex.net** frequently for the latest information, updates, content, and services.

Step 4 – Configure Your Synchronization Settings

Synchronization is the process you use to copy data between your PC and REX and download content from **www.rex.net**. The application you use to synchronize REX and your PC is called *Intellisync for REX*.

Before you synchronize data, you must configure your synchronization settings. Once you have performed a configuration, you need not do it again, unless you want to change your settings.

To configure synchronization settings:

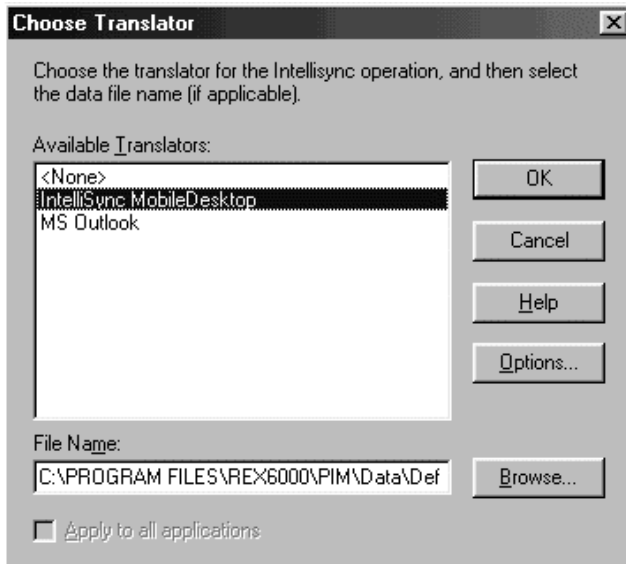
1. Be sure REX is connected to your computer.
2. Double-click the **Intellisync for REX** icon on the Windows desktop, or from the Windows Start menu, select **Programs / REX 6000 / Intellisync for REX**.
3. You may see a COM Port Selection dialog box, prompting you to select a COM port. If so, select the COM port suggested by Windows.
4. If you have not previously configured Intellisync, you will see the Intellisync for REX Configuration dialog box. (Otherwise, you will see the Intellisync for REX dialog box and you can select **Config**.)



5. The central portion of the window lists several REX applications. You can select the applications you want to synchronize with your PC's PIM, one at a time. We suggest you choose each of the applications listed. If you prefer not to synchronize certain applications or you

want more information, select the **Help** button. Highlight a REX 6000 application (e.g., **Anniversary**), and then select the **Choose** button.

6. The Choose Translator dialog displays. Here you select the PC PIM you want to synchronize with REX for the application you chose in the previous step. Select your PIM from the list of translators.



The File name field is filled in automatically with the name of your PIM's data file. If you need to change this field, select the **Help** button for more information.

7. Once you have made your selection in the Choose Translator dialog, select the **OK** button.

You will be back at the Configuration dialog box and the application you selected will be preceded by a check mark, signifying that the data is selected for synchronization.

8. Repeat steps 5 through 7 above for the remaining REX applications.
9. When you have finished selecting all the REX 6000 applications, select **OK** at the Configuration dialog box. You will see the Intellisync for REX dialog box and you can proceed with synchronization. Intellisync will remember your configuration settings and use them every time you synchronize.

Step 5 – Synchronize REX with Your PC

Once you have configured your settings as explained above, you will see the Intellisync for REX dialog box and you can proceed with synchronization.



1. If you want to download Web content from **www.rex.net**, be sure you are connected to the Internet.
2. Use the menus to select your synchronization options.

Synchronize menu:

- **Quick Sync** – Copies only data that has changed since the last synchronization. Use this method when you sync with only one PC.
- **Full Sync** – Compares all REX and PC data before copying. Use this method if you sync REX with multiple PCs (e.g., home and office).

Preferences menu:

- Check **Sync PIM** to synchronize your PIM data.
- Check **Sync REX.net** to copy Web content to REX (requires a rex.net account, see page 6).

3. Select the **Synchronize** button to start the sync process. When the process is complete, disconnect REX from your PC.

We suggest you synchronize regularly to keep your data up to date on your PC and REX. To start the configuration process in the future, first connect REX to your PC as described earlier. Launch Intellisync for REX from the Windows desktop or Start menu. If you are using the optional USB docking station, you can alternatively start the synchronization by pressing the button on the left side of the docking station.

Now that you are finished with installation and synchronization, it is time to learn how to use REX 6000.

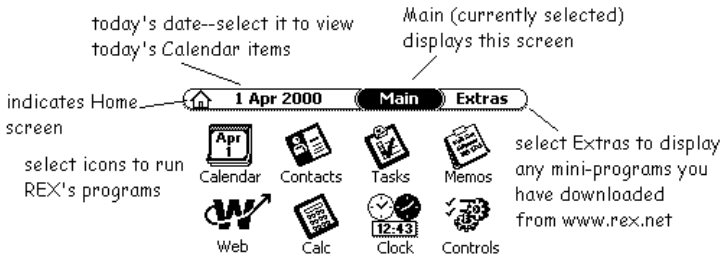
Powering the REX Card On and Off

To power on REX, press any of the buttons along the side of the unit. To power off REX, press and hold the **Home** button (the top button).

To prolong battery life, REX powers off automatically after one minute of inactivity. For information on changing the time before auto-power-off, see the **Controls** section in the online user guide. You will find instructions for displaying that guide at the end of this manual

The Home Screen

When you power on REX, the screen you were at when the unit was last powered down will display. If you are powering on REX for the first time, you will see the home screen.



The main modules are:

- **Calendar** – keeps track of your appointments and important dates
- **Contacts** - stores contact information
- **Tasks** – a place to enter to-do items
- **Memos** – a place to make notes, lists, reminders, etc.
- **Web** – a feature you can use to read specially tailored content you have downloaded from the Web onto REX
- **Calc** – an on-screen calculator
- **Clock** – a clock you can use to keep track of the time and date in major cities around the world
- **Controls** – where you set up your user preferences, such as whether to display time in 12-hour or 24-hour mode and the amount of time before REX automatically powers off

Operating REX






There are three basic ways to operate REX: touch screen, navigation buttons, and application buttons.

Touch Screen

Using the touch screen is easy--just touch the item you want to select on the screen with your finger or the stylus. Most people prefer the stylus because it makes it easier to be precise in pointing.

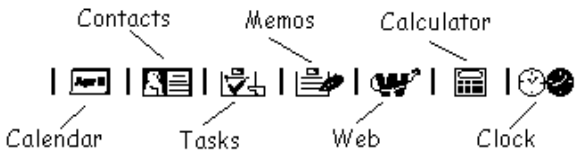
Navigation Buttons

You can perform most of REX's operations using the navigation buttons along the right side of the unit. Here is a summary of what the buttons do:

 Home	Goes to the Home screen, and when pressed and held, powers REX on/off.
 Back	Moves back one screen.
 Select	Launches the highlighted option.
 Up.	Scrolls up or left, highlighting the previous item in a list.
 Down	Scrolls down or right, highlighting the next item in a list.

Application Buttons

The application buttons appear in a horizontal strip along the bottom of the screen. You can touch them with the stylus or your finger to select REX's different applications (e.g., Calculator, Calendar, Contacts, etc.).



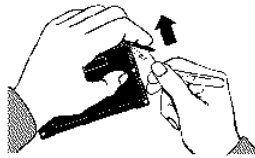
Replacing REX's Batteries

Rex's batteries should last for 4 to 6 months. REX will display a warning when the batteries are running low. Use two replacement batteries, size CR2016, available at most electronic and watch stores. To replace batteries:

1. Power off REX.
2. The battery compartments are on the edge nearest the buttons. Position the REX card so the battery compartments are facing you. Unbend a paper clip and insert its tip into the small hole on one of the battery compartment doors.



3. Gently push the battery compartment door outward toward the outside edge of the unit. Push the door out to about a 45-degree angle with the body of the unit.



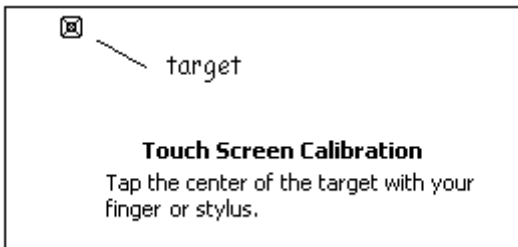
4. Remove the old battery and insert a new one with the positive (+) side facing the front of the REX card.
5. Gently close the battery compartment door until it snaps shut.
6. Repeat the above steps for the second battery.
7. After replacing the batteries, you must recalibrate the touch screen (see the picture in the next section). When you see the calibration screen, touch the center of the on-screen target. We suggest using the stylus rather than your finger, for greater accuracy. When the target moves to a different location, touch its center again. Repeat this step until the calibration screen disappears.

Resetting REX

On rare occasions, you may experience a system failure. REX's screen may "freeze" and the touch screen and buttons will not operate properly. If this happens, you will need to reset REX. When you reset the unit, all your data will be kept intact except for anything you did not save before the freeze.

To reset REX:

1. Unbend a paper clip and insert its end into the small hole on the back of the unit. The hole is located near the edge opposite the battery compartments. The Touch Screen Calibration screen displays.



Touch the center of the on-screen target. We suggest using the stylus rather than your finger, for greater accuracy.

2. The target will move to a different location. Touch its center again. Repeat this step until the calibration screen no longer displays.

Using the Intellisync Mobile Desktop Software

During installation, you had the chance to specify what PC software to use as your PIM. If you chose the Intellisync PIM, the installation program copied the Intellisync Mobile Desktop software to your PC. You may want to use the Intellisync Mobile Desktop to keep track of your contacts, memos, calendar items, etc. on your PC, and to synchronize this data with REX.

To start the Intellisync Mobile Desktop:

- From the Windows Start menu, select **Programs / REX 6000 / Intellisync Mobile Desktop**.

For information on how to use Intellisync Mobile Desktop, select the **Help** menu after starting the program.

For More Information on Using REX...

For detailed information on how to use REX, use your PC to view the online user guide. The user guide is in HTML format and will display in your Web browser. There are three ways to view the guide:

- From the Windows Start menu, select **Programs / REX 6000 / Online Documentation**.
- You can view the documentation on the REX Web site: **www.rex.net**
- You can view the documentation directly from the included REX installation CD-ROM. Insert the CD-ROM into the drive. Select **Run** from Windows' Start menu. When the Run dialog box displays, type **x:\setup** (substitute your CD-ROM drive's letter for the x). Then click **OK**. When the REX 6000 screen comes up, select **View Documentation**.