

SAMSUNG

ELECTRONICS

User's Guide YP-E32/64

MP3 File Playback
32/64MB Memory
Convenient Memory Expansion (yepp™ Card)
Section Repeating
Voice Recording
Phone Book
7-Mode Equalizer
USB Adapter (Optional)

yepp



Please read all instructions in this User's Guide before using the player.

yepp'

The yepp'™ is a digital audio player for the next generation. You can purchase MP3 files on the Internet and download them directly to your yepp'™ for CD quality sound without the need for a cassette or CD.



Digital Sounds - yepp'™

The player maintains high quality sound at all times.

Voice Recording - yepp'™

You can store up to 128 minutes of voice recording from a lecture or interview on your yepp'™ (YP-E32).

Phone Book - yepp'™

You can store up to 350 Names and phone numbers on your yepp'™.

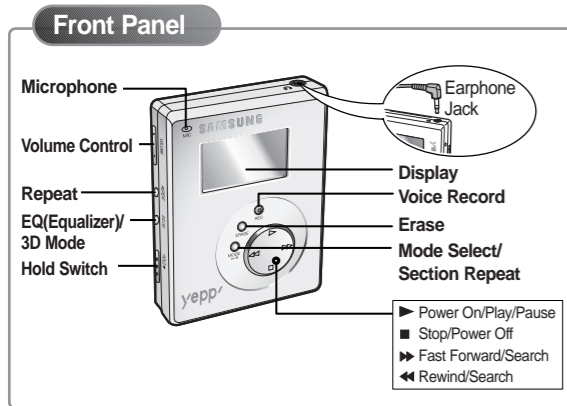
What is MP3?

MP3 stands for MPEG 1 layer 3.
MP3 files are 1/4 to 1/20 the size of uncompressed audio files.

CONTENTS

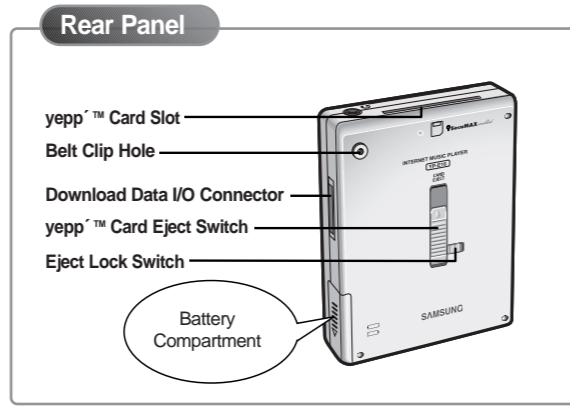
◆ PREPARING FOR USE		◆ CREATING AND DELETING MP3 FILES	
■ Player Features and Controls	.4	■ Making MP3 Files from an Audio CD	.26
■ Batteries & Accessories	.5	■ Deleting Files	.28
◆ LISTENING TO THE SAMPLE MUSIC		◆ PHONE BOOK	
■ Listening to Music	.6	■ Storing Phone Numbers	.30
■ Repeating Tracks/Section	.7	■ Sending Phone Book Entries to yepp'™	.31
■ Arranging the Playback Order	.8	■ Importing Phone Book Entries	.32
■ Using the Equalizer	.10	■ Viewing Stored Entries	.33
◆ VOICE RECORDING		◆ OTHERS	
■ Voice Recording	.11	■ yepp'™ Card	.34
■ Listening to the Recorded Voice (On PC)	.12	■ Safety Precautions	.35
■ Listening to the Recorded Voice (On yepp'™)	.14	■ Troubleshooting	.36
■ Making WAV Files	.15	■ MP3 Internet Sites	.37
◆ SOFTWARE INSTALLATION AND OPERATION		◆ TECHNICAL SPECIFICATIONS	
■ Setting Up Environment	.17		
■ Installing Software on PC	.18		
■ Connecting yepp'™ to PC	.20		
■ Formatting Flash Memory	.21		
■ Sending Files to yepp'™	.22		
■ Option Preferences	.24		

PLAYER FEATURES AND CONTROLS



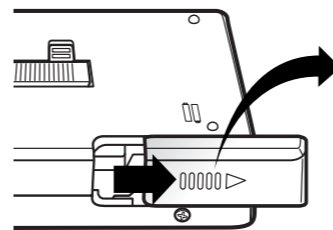
Note ▶▶ : Press and hold to move forward within the current track; press and release to skip to next track.

◀◀ : Press and hold to move backward within the current track; press and release to skip to the start of the previous track.



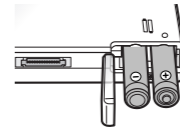
BATTERIES AND ACCESSORIES

Inserting the Batteries into the Player

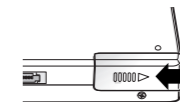


1 Slide the battery cover in the direction of the arrow.

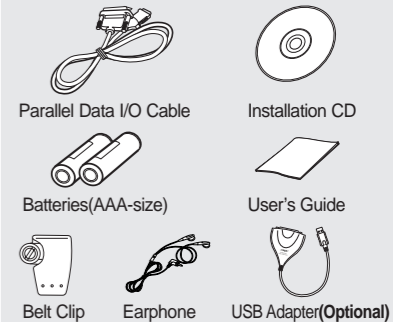
2 Insert the two “AAA” batteries noting the correct polarity.



3 Close the cover and slide in the direction as indicated until the battery cover latches.



Accessories



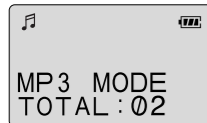
◆ For further details on how to purchase accessories, please refer to <http://www.samsungyepp.com>

LISTENING TO MUSIC

Your yepp[™] comes with pre-installed MP3 files for your immediate use.

1 Turn the player on by pressing ►.

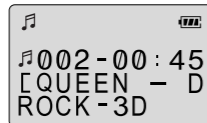
- ◆ Press ► again to play the first selection.



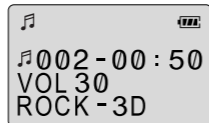
To stop the playback temporarily, press ►. Press ► to play the track you selected. Press ► again to continue playing.

2 Select the track to which you wish to listen by pressing ◀ or ▶.

- ◆ Press ▶ to listen to the next track.
- ◆ Press ◀ to listen to the previous track.

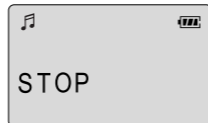


3 Adjust the volume by pressing and holding the volume +/- to your desired level.



4 Press ■ to stop play.

- ◆ To turn your yepp[™] off, press and hold the ■ for about 2 seconds.



If there is no music playing, and you have not pressed any buttons, your yepp[™] will automatically shut down after approximately 3 minutes.

REPEATING TRACKS/SECTION

Your yepp[™] can automatically repeat all files or an individual file.

Repeating Tracks

1 Pressing the REPEAT button will allow you to perform the following functions.

- ◆ Repeat : repeat the current selected file
- ◆ All : repeat all files stored in the selected mode
- ◆ Shuffle : randomly plays files in the selected mode
- ◆ INTRO : plays the first 10 seconds of each file in the selected mode

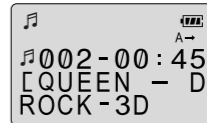
2 Continue pressing the REPEAT button until the desired repeat mode is displayed. Press ► to listen to the selected Repeat mode. To turn off the repeat mode, continue to press the REPEAT button until there is no repeat indication on the display.

Section Repeating

You can repeat a section within a song. Begin by playing the desired file.

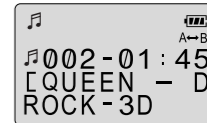
1 Press the MODE/A↔B button to start excerpting.

- ◆ A is displayed on the LCD.



2 Press the MODE/A↔B button again to complete selection.

- ◆ B is also displayed.

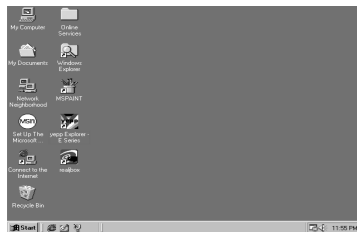


To cancel section repeating, press the MODE/A↔B button during the playback.

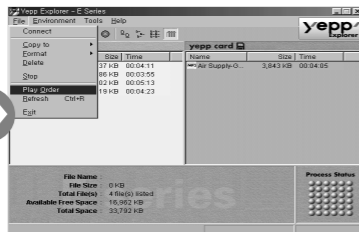
ARRANGING THE PLAYBACK ORDER

Connect your yepp™ to the PC and execute the yepp™ Explorer as indicated on pages 18~22.

- 1** Execute the yepp™ Explorer.
- ◆ Double-click the icon of the yepp™ Explorer on the desktop.



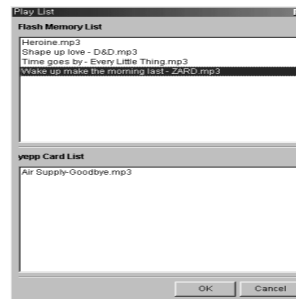
- 2** Click [File] and [Play Order].



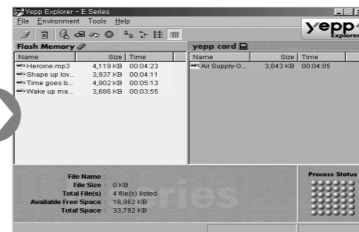
- 3** Arrange the files by dragging and dropping.



- 4** Click [OK] after moving files to the desired position.

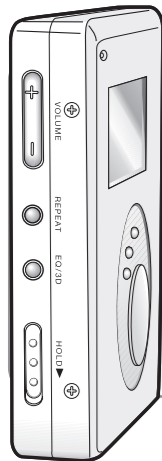


- 5** The yepp™ Explorer displays the file arrangement you made.



USING THE EQUALIZER

Your player is equipped with a preset equalizer that enables you to choose the most appropriate balance between treble and bass frequencies, according to the type of music you are listening to.



Press the EQ/3D button one or more times until the required option is selected. There are seven available equalizer settings.

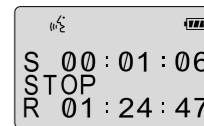
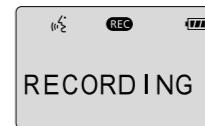
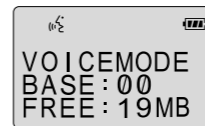
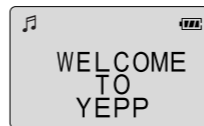
To obtain a...	Then select...
ROCK - 3D	
Normal balance	NORMAL
Balance suitable for Jazz music	JAZZ or JAZZ-3D
Balance suitable for rock music	ROCK or ROCK-3D
Balance suitable for classical music	CLASSIC or CLASSIC-3D

Note 3D sounds are Royal Sound Field(RSF®) provided by Rhas_tel Co.. (rhas@hitel.net)

VOICE RECORDING

You can record up to 128 minutes(with YP-E32). Voice is recorded on ADPCM format, so the quality of sound may be lower than that of the MP3 format.

- 1 If necessary, press to turn the player on.
- 2 Press the MODE/A \leftrightarrow B button to select the voice mode.
- 3 Press the REC button to start voice recording.
- 4 To stop recording, press .



Note If there is no voice signal, your yepp'™ will stop recording automatically until you start recording again.

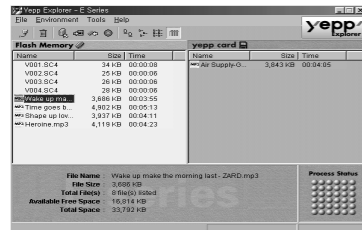
If 'full' is displayed, delete MP3 files or voice files to secure free space in memory for voice recording.

LISTENING TO THE RECORDED VOICE (ON PC)

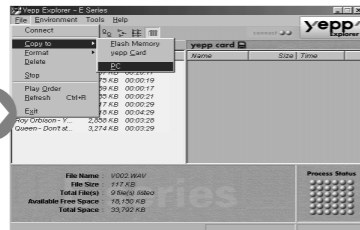
Connect your yepp™ to the PC and execute the yepp™ Explorer as indicated on pages 18~22.

On PC

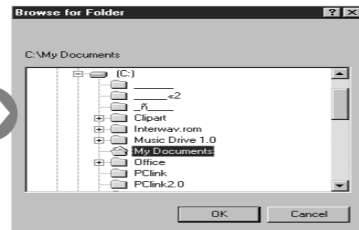
1 Click the file to which you would like to listen.



2 Click [Copy to] and [PC] in order.

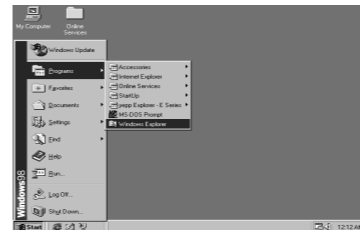


3 Choose the directory.

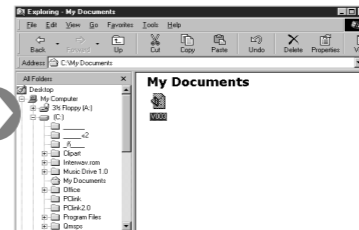


4 Click [OK].

5 Execute Windows Explorer.



6 Double-click the file you want to listen to.



7 The selected file is played back.

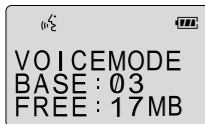


Note ♦ When you wish to send voice files to another computer and listen to them, please refer to page 15.

LISTENING TO THE RECORDED VOICE (ON yeppTM)

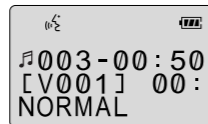
On yeppTM

- 1 Press the MODE/A↔B button to select the voice mode.



VOICEMODE
BASE : 03
FREE : 17MB

- 2 Press ▶ to listen to the voice file.



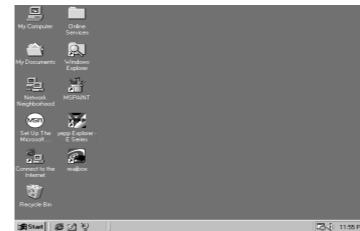
003-00:50
[V001] 00:
NORMAL

To select the file you want to listen to, press ▶▶ or ◀◀.

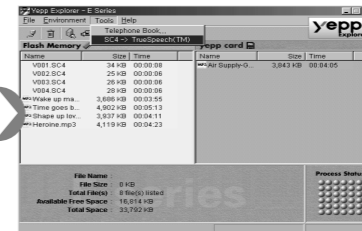
MAKING WAV FILES

When you wish to send a voice file to another computer, you should convert the file into the standard WAV format. yeppTM Explorer should be installed on your computer. For software installation instructions, please refer to page 18.

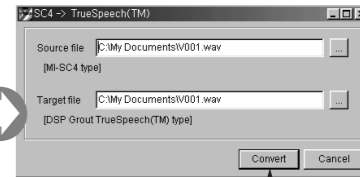
- 1 Execute the yeppTM Explorer.
 - ◆ Double-click the icon of the yeppTM Explorer on the desktop.



- 2 Click [Tools] and [SC4 -> Truespeech(TM)].



- 3 Select the file you wish to convert into the WAV format after clicking [...].



- 4 Click [Convert].

INSTALLING SOFTWARES

1 Install the software



2 Connect yepp[™] to PC and set up the environment



3 Format Flash Memory or the yepp[™] Card(Smart media card).

System Requirements

- ◆ Pentium 133MHz or faster
- ◆ Windows 95/98 NT 4.0 or higher
- ◆ CD-ROM drive
- ◆ 20MB free hard disk space
- ◆ Available parallel port(ECP or ECP/EPP)



SETTING UP ENVIRONMENT

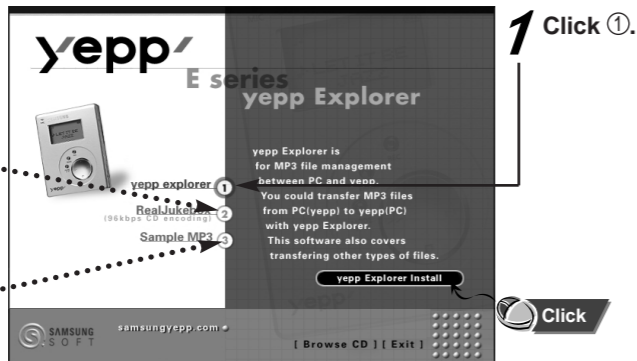
- ◆ The yepp[™] is designed to work in ECP mode. So check whether your computer supports ECP mode before using your yepp[™]. To check the mode, go to **My Computer** → **Control panels** → **System** → **Device Manger** → **Port**.
- ◆ If your computer is not in ECP mode, select ECP mode by entering BIOS mode after rebooting your computer. Refer to your operations manual provided with your computer or contact the place where you purchased PC.
If your computer does not support ECP mode, select EPP or Bi-directional mode.
(However, some old model computers will not able to communicate with your yepp[™] in EPP or Bi-directional mode.)

INSTALLING SOFTWARE ON PC

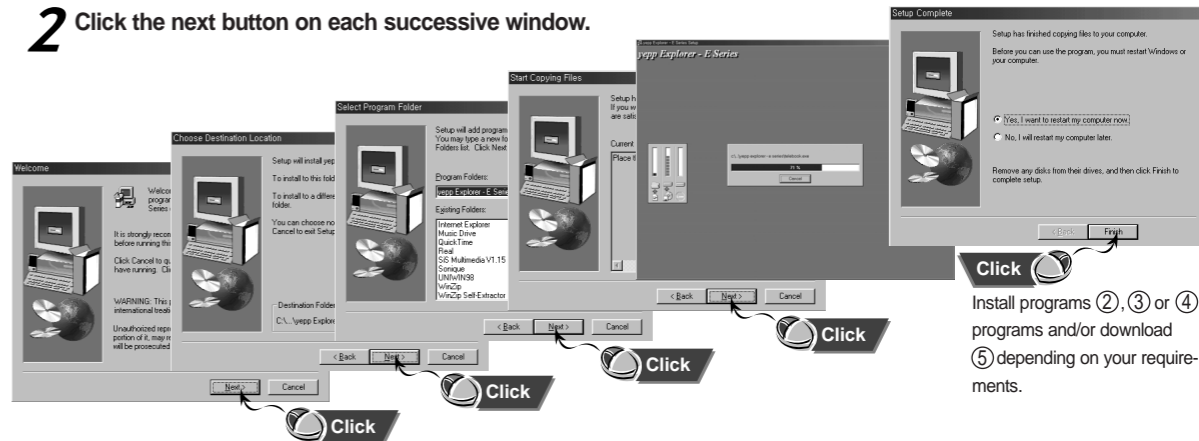
Insert the Installation CD into the CD-ROM drive. The picture below appears when inserting the CD.

This software lets you listen to MP3 music on your computer digitally and encode your CDs into MP3 Files.

There are 100 sample MP3 files that can be downloaded.



2 Click the next button on each successive window.



Note If your software does not work properly after finishing installation, please refer to page 27 and recheck your PC parallel configuration (ECP mode).

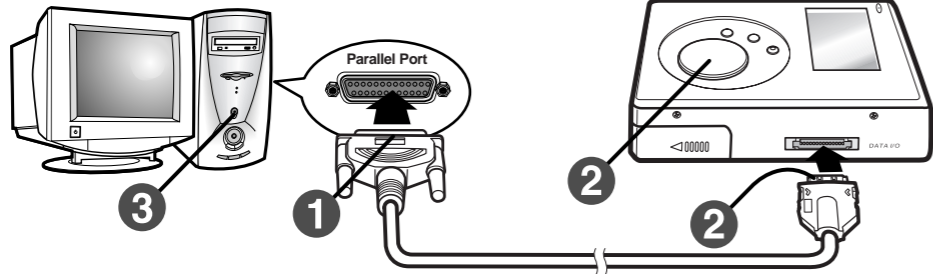
CONNECTING yeppTM TO PC

1 Connect the parallel cable to the parallel port of the computer.



2 Turn the player on and connect the other end of the cable to the download connector.

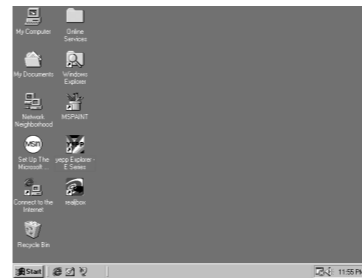
◆ CONNECT will appear on the LCD of the player.



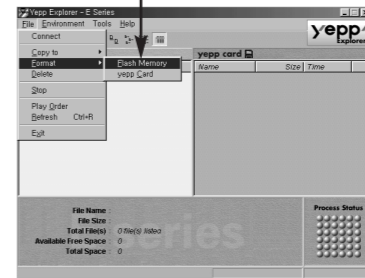
FORMATTING FLASH MEMORY

1 Execute the yeppTM Explorer.

◆ Double-click the icon of the yeppTM Explorer on the desktop.



2 Click [File], [Format] and select [Flash Memory].



Note ◆ Before formatting the flash memory or the yeppTM Card, connect your yeppTM to PC and click **Connect** or **Refresh** icon on the yeppTM Explorer.

◆ If the optional yeppTM Card is installed in the yeppTM, file(s) can also be saved to the card by clicking **Copy to** and selecting **yeppTM Card**.

◆ You can also format the flash memory or the yeppTM Card by pressing the right button on the mouse and selecting **Format**.

WARNING

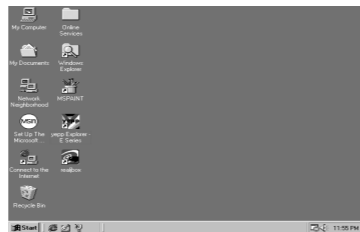
◆ Formatting Flash memory(or yeppTM Card) will delete all existing files.

SENDING FILES TO yeppTM

Before sending files to your yeppTM, connect the yeppTM to PC and click **Connect** or the **Refresh** icon on the yeppTM Explorer.

1 Execute the yeppTM Explorer.

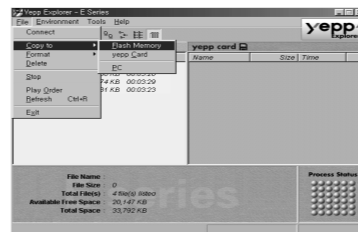
- ◆ Double-click the icon of the yeppTM Explorer on the desktop.



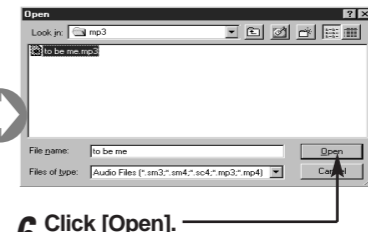
2 Turn on the yeppTM by pressing ►.

3 Click the Connect icon on the yeppTM Explorer.

4 Click [Copy to] and [Flash Memory] or [yeppTM Card].

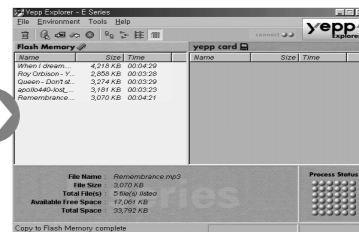


5 Select the file you would like to send to your yeppTM.



6 Click [Open].

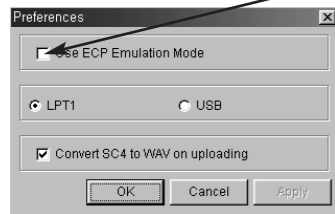
The selected file has been saved. Now you can listen to music with yeppTM after removing the parallel cable.



Note ◆ Always check that **CONNECT** is displayed on the LCD before sending a file.
◆ The yeppTM uses around 1MB of memory for each minute of music.
Voice recording occupies about 0.25MB of memory for each minute.

OPTION PREFERENCES

To set the preferences, click the [Environment] and [Option Ctrl+O] on the yepp[™] Explorer.
To save the changes, click [OK].

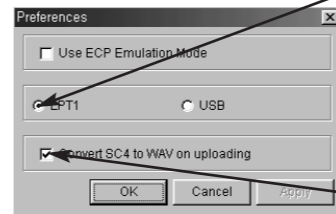


Using ECP Emulation Mode

If your PC supports ECP mode, you do not have to click on the box.

When your PC does not support ECP mode, click on the ECP Emulation mode box. (In this case, the download speed can be lower than that in ECP mode.)

However, some old model computers will not be able to communicate with your yepp[™] even though you select the ECP Emulation mode.



LPT1 & USB

When using the parallel cable, click **LPT1** and when using the USB adapter, click **USB**. (The USB adapter is an optional accessory. For further details on the adapter, refer to the Owner's Guide provided with the adapter.)

Convert SC4 to WAV on uploading

When you wish to listen to a voice file on your PC, click on the box.

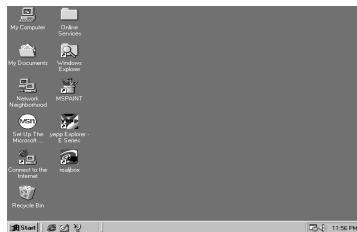
MAKING MP3 FILES FROM AN AUDIO CD

You must install the RealJukebox™ on your computer before making MP3 files.

For software installation instruction, please refer to page 18.

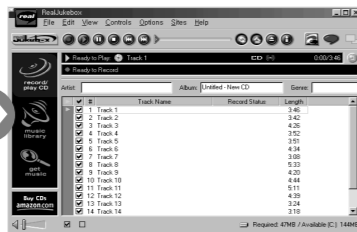
1 Execute RealJukebox™.

- ◆ Double-click the icon of the RealJukebox™ on the desktop.

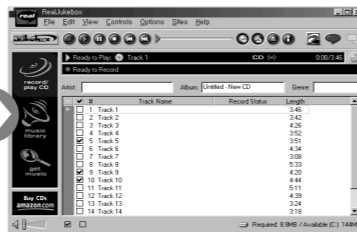


2 Insert an audio CD into the CD-ROM drive.

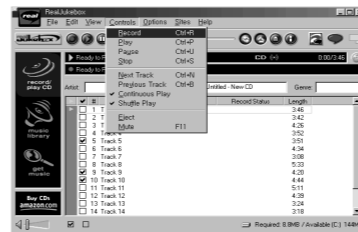
- ◆ The CD information is displayed.



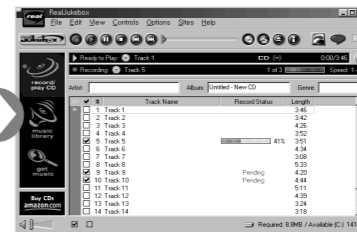
3 Select the track you would like to convert into an MP3 file.



4 Click [Record Ctrl+R].



5 Recording status is displayed.



Now you can listen to the music on your yepp™ after sending files to it. For sending files, refer to page 22.

Note RealJukebox™ is a music management system provided by RealNetwork Co..

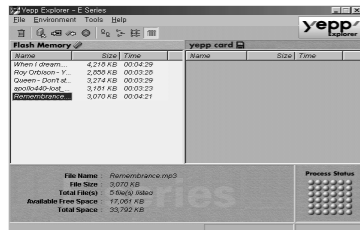
For further details on RealJukebox™, see **Help**.

DELETING FILES

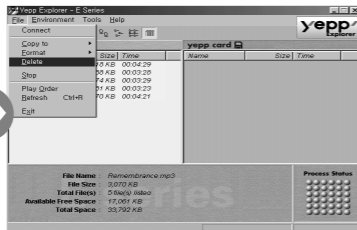
On PC

Connect your yepp™ to PC and execute the yepp™ Explorer before deleting.

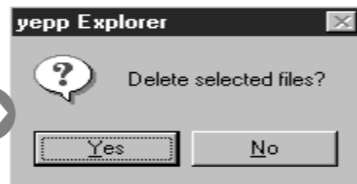
1 Click the file you would like to delete.



2 Click [File] and select [Delete].



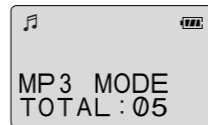
3 Click [Yes].



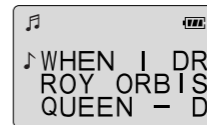
Note You can also delete the file by pressing the right button on the mouse and selecting **Delete**.

On yepp™

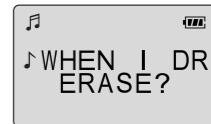
1 Press the MODE/A↔B button to select the mode.



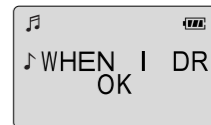
2 Select the file you would like to delete by pressing ► or ◀.



3 Press the ERASE button twice.



To cancel deleting, press ■ or wait 3~4 seconds without pressing any button.

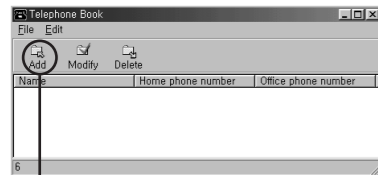


Note Once files have been deleted from your yepp™, they cannot be accessed.

STORING PHONE NUMBERS

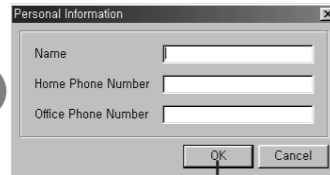
You can store up to 350 entries to your yepp[™].

1 Execute the Telephone Book.

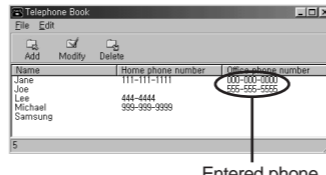


2 Click the icon of [Add].

3 Enter the name, home phone number and office phone number.



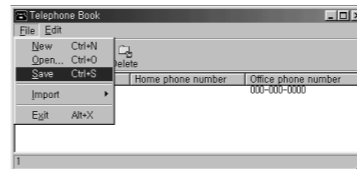
4 Click [OK].



Entered phone numbers are displayed.

SENDING PHONE BOOK ENTRIES TO yepp[™]

1 Click [Save Ctrl+S] to save the phone book entries.



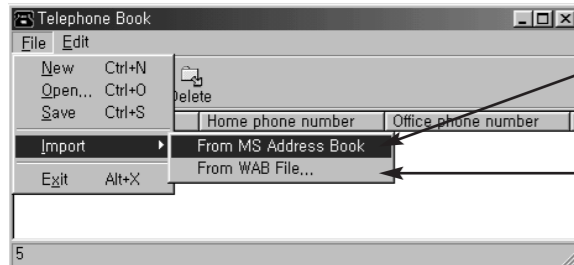
2 Execute the yepp[™] Explorer.

◆ Now you can send the phone numbers to your yepp[™]. For further information, refer to page 22.



Note The phone book entries are saved as [.tel]. Thus, when sending the phone book entries to the yepp[™] you must select the [.tel] file. You can store only one [.tel] file to the player. If you attempt to store another [.tel] file, it will replace the existing file.

IMPORTING PHONE BOOK ENTRIES



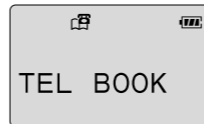
You can import the phone book entries from the Address Book in Microsoft Internet Explorer 4.X and 5.X.

You can import the phone book entries [.wab] from a specific directory.

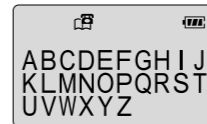
VIEWING PHONE NUMBERS

The phone numbers can be found alphabetically.

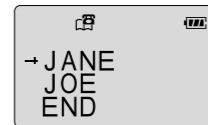
1 Press the MODE/A↔B button to select the phone book mode.



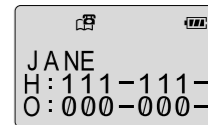
2 Press ► or ◀ to move the cursor to the first letter of the name you are looking for. Press ► to display the names entered under the chosen letter.



3 Press ► or ◀ to move the cursor to the desired name. Press ► to display the chosen names phone numbers.



The entries are displayed in alphabetical order.



H : Home phone number.
O : Office phone number.

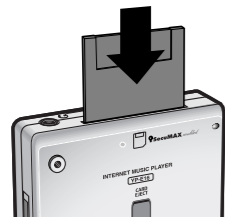
To exit the phone book mode and return to main menu, press the MODE/A↔B button again.

yepp[™] CARD

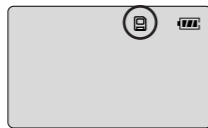
You can store more music by using the optional yepp[™] Card.

Installing yepp[™] Card

- 1 Insert the yepp[™] Card into the yepp[™] Card Slot.



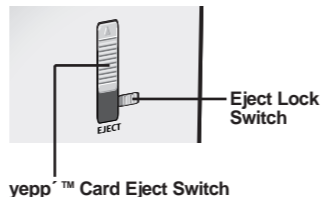
- 2 The yepp[™] Card icon will appear when the card is installed and your yepp[™] is turned on.



To send files to the yepp[™] Card, you must format the card before using it ; refer to page 21.

Ejecting yepp[™] Card

Move the Eject Lock Switch to the right side and push the yepp[™] Card Eject Switch upward.



SAFETY PRECAUTIONS

Do not drop your player or leave it under heavy objects.

Do not allow any liquids to contact the player.

◆ If this happens, wipe the player with dry cloth and call a Samsung Electronics service center.

Avoid areas of high humidity, strong magnetic fields, or sources of heat when storing your player.

Do not use thinner, alcohol, or benzene when cleaning the player. It may damage the player.

TROUBLESHOOTING

The software does not work properly.

- ◆ Refer to page 17, setting up Environment.

The software does not work even if your computer is in ECP mode.

- ◆ The yepp™ Explorer can be in conflict with the external drive, for instance the zip drive. You should uninstall the drive using the parallel port in this case.

The player does not work or nothing is displayed on the LCD.

- ◆ Check the capacity of the batteries. Two 1.5V AAA-size batteries are required.
- ◆ Check the polarity(+ and -) of the batteries.

The buttons are not working.

- ◆ Check if the Hold Switch is down. While the Hold Switch is down, the buttons do not work.

There is no audio produced when the ► button is pressed in MP3 mode.

- ◆ Check that MP3 files are stored in the built-in memory or the yepp™ Card.

MP3 files cannot be downloaded.

- ◆ Check and/or replace the batteries.
- ◆ Check the connection between the parallel port of your PC and the parallel cable.

yepp™ Card cannot be inserted into the player.

- ◆ Make sure you are using the correct yepp™ card. Only 3.3V version cards will work in your yepp™. 5V version cards will not function correctly.

The files on the yepp™ Card cannot be recognized.

- ◆ MP3 files downloaded to another media card from a different manufacturer of MP3 may not work in your yepp™.
- ◆ Format the yepp™ Card and copy files again with the yepp™ Explorer.

SECURITY AND MP3 WEBSITES

You can get legal MP3 files from a growing number of Internet sites. Here are some sites which provide MP3 files.

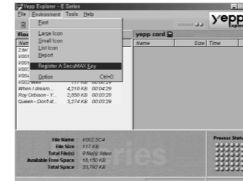
What is SecuMax?

With the increasing amount of digital multimedia content, the content providers became concerned with the ease in which the content could be copied and distributed in violation of their copyrights. This matter required the system for protecting copyrighted music and for using legal contents conveniently.

It is the reason SecuMAX has been developed.

- ◆ SecuMAX protects the copyrighted music against infringement.
- ◆ SecuMAX can be adapted to various types of digital contents.

For further details on SecuMAX, please visit www.samsungyepp.com



Note To listen to MP3 files encoded with SecuMAX, you must download the key file from the Internet and register it on the yepp™ Explorer.

Internet Site

- ◆ www.mcy.com
- ◆ www.mp3.com
- ◆ www.emusic.com
- ◆ www.cddb.com

- ◆ RealJukebox™ is either a registered trademark or trademark of Real Networks Inc. in the United States and/or other countries.
- ◆ Music CD-related data is provided through the Internet from the CDDb™ Music CD Database. Copyright© 1998 CDDb Inc. All rights reserved.



TECHNICAL SPECIFICATIONS

Model	YP-E32/64
Processor	10MHz, 16bit CISC
Memory Capacity	Built-in Memory 32/64MB
Power	3V
Battery	Two AAA-size/10-hr or longer playing time (with alkaline batteries)
LCD	HTN-type LCD, Up to 30 letters/numbers can be displayed
Dimensions (WxHxD)	65x87x17.2mm(2.5"x3.4"x0.677") / 75g (2.6 Oz) without batteries
Case	Aluminum, Plastic
File Transmission Speed	Up to 1.3Mbps
Memory Socket	yepp [™] card socket
Voice Recording	ADPCM format / up to 125 tracks / 128 min (256 min in 64MB)
Phone Book	Up to 350 entries
Noise Ratio	90dB (with A filter)
Earphone Output Power	7mW
Output Frequency Range	20Hz-20KHz

SAFETY INFORMATION

FCC Part 15: This equipment has been tested and found to comply with the limits for a Class B digital device, pursuant to Part 15 of the FCC Rules. These limits are designed to provide reasonable protection against harmful interference in a residential installation. This equipment generates, uses, and can radiate radio frequency energy and, if not installed and used in accordance with the instructions, may cause harmful interference to radio communications. However, this notice is not a guarantee that interference will not occur in a particular installation. If this equipment does cause harmful interference to radio or television reception, which can be determined by turning the equipment off and on, the user is encouraged to try one or more of the following measures:

- * Reorient or relocate the receiving antenna.
- * Increase the distance between the equipment and receiver.
- * Connect the equipment to an outlet on a circuit different from that to which the receiver is connected.
- * Consult the dealer or an experienced radio/TV technician.

Modifications

Any changes or modifications not expressly approved by the grantee of this device could void the user's authority to operate the device.

Compliance

This product conforms to the following Council Directive:

* Directive 89/336/EEC, 92/31/EEC(EMC)

Declaration of Conformity

Name: Samsung Electronics Co., Ltd

Address: 416, Maetan-3Dong, Paldal-Gu, Suwon City, Kyungki-Do, Korea 442-742

declares under its sole responsibility that the product

Trade Name: Samsung Electronics Co., Ltd

Model Number: YP-E32/64

has been tested according to the FCC/CISPR22/95 requirements for Class B devices and found compliant with the following standards

EMI/EMC: AnSI C63.4 1992, FCC Part 15 Subpart B

This device complies with part 15 of the FCC Rules.

operation is subject to the following two conditions:

1. This device may not cause harmful interference, and
2. This device must accept any interference received, including interference that may cause undesirable operation.

Compliance Manger

Samsung Electronics Co., Ltd.

1999

