

ZN5 GSM T-Mobile UG 8/19/08

Dummy Page - To be discarded before printing

ITC Notes:


Use this template with A6MotoLandscape StructApps. This template supports:

- Spot color formatting.
To produce a B/W print , check the 'Spot color as B/W' checkbox in the Framemaker print dialog.
- User's Guides with embedded Legal Guides, if needed.
All semantically-named elements within the Legal Guide content must have their Role attributes set to LG.

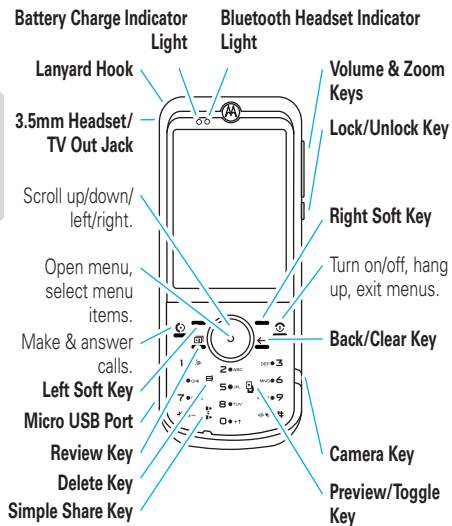
HELLOMOTO

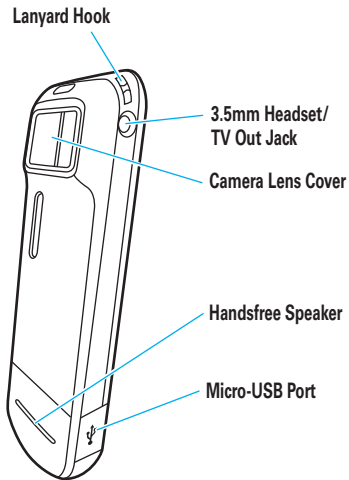
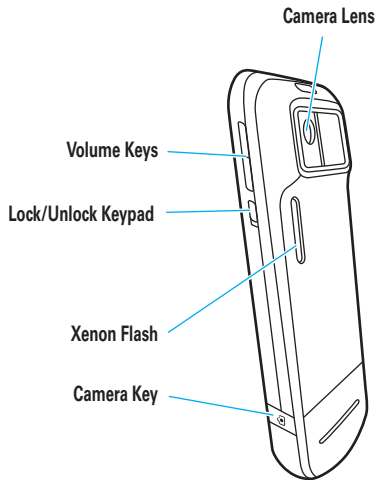
See It, Take It! Your MOTO **ZINE** ZN5 phone is made to take photos and videos!

- Take great-looking **photos** with the 5-megapixel digital xenon flash camera (page 42), then **upload** them to a KODAK Gallery (page 45) or T-Mobile album (page 45) to share them with your friends. You can even print photos over a USB (page 70), Bluetooth (page 73), or Wi-Fi (page 75) connection!
- Capture key moments in **video**, then upload to your blog (page 47).
- Press the camera and video **mode keys** to instantly access viewing and camera functions (page 43).
- Transfer your favorite **music** quickly and easily with Microsoft™ Windows™ Media Player 11 (page 50).
- Listen to your favorite **FM radio** stations with your 3.5mm stereo headset (page 59).
- Access **Web** sites just like you do on your computer, with your phone's full HTML browser (page 61).

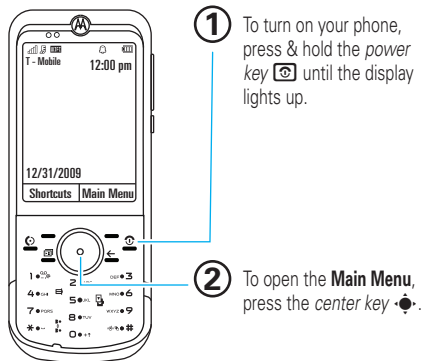
For more information: To read feature instructions on your phone, press **Main Menu** >  **Fun & Apps** > **Help**. To watch Web tutorials and learn more about your phone and accessories, go to www.motorola.com/support. **On the Experience CD**, you will find useful software, such as, KODAK EASYSHARE and Motorola Phone Tools software. Use KODAK EASYSHARE software to quickly transfer pictures from your phone to your PC via USB. Then you can organize, edit, print, and share your photos. Use Motorola Phone Tools software to transfer and sync files from your PC to your phone. See the Motorola Phone Tools user's guide for more information.

Introducing your new MOTO **ZINE** ZN5 GSM wireless phone. Here's a quick anatomy lesson.

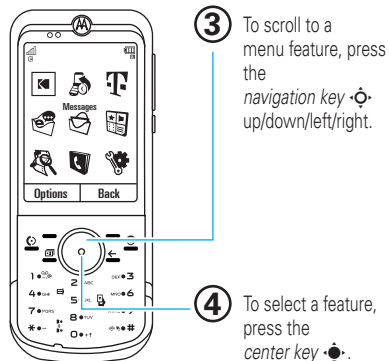




Home Screen



Main Menu



Note: This is the standard home screen and main menu layout. **Your phone's home screen and main menu may be different.** To change your home screen shortcuts and main menu appearance, see page 32.

Motorola, Inc.
Consumer Advocacy Office
1307 East Algonquin Road
Schaumburg, IL 60196

www.hellomoto.com

1-800-331-6456 (United States)

1-888-390-6456 (TTY/TDD United States for hearing impaired)

1-800-461-4575 (Canada)

Certain mobile phone features are dependent on the capabilities and settings of your service provider's network. Additionally, certain features may not be activated by your service provider, and/or the provider's network settings may limit the feature's functionality. Always contact your service provider about feature availability and functionality. All features, functionality, and other product specifications, as well as the information contained in this user's guide are based upon the latest available information and are believed to be accurate at the time of printing. Motorola reserves the right to change or modify any information or specifications without notice or obligation.

MOTOROLA and the Stylized M Logo are registered in the US Patent & Trademark Office. The Bluetooth trademarks are owned by their proprietor and used by Motorola, Inc. under license. Java and all other Java-based marks are trademarks or registered trademarks of Sun Microsystems, Inc. in the U.S. and other countries. Microsoft and Windows are registered trademarks of Microsoft Corporation; and Windows XP and Windows Media are trademarks of Microsoft Corporation. Macintosh is a registered trademark of Apple Computer, Inc. All other product or service names are the property of their

respective owners. **WiFi** is a Certification Mark of the Wireless Fidelity Alliance, Inc. KODAK, EASYSHARE and PERFECT TOUCH are trademarks of Kodak.

© 2008 Motorola, Inc. All rights reserved.

Caution: Changes or modifications made in the radio phone, not expressly approved by Motorola, will void the user's authority to operate the equipment.

Manual Number: 68000201475-A

contents


menu map	8	text entry	21	time & date	34
Use and Care	10	volume	24	answer options	34
get started	11	lock/unlock key	24	hearing aids	35
about this guide	11	voice commands	24	calls	36
insert your SIM card	11	talking phone	25	myFaves	36
insert a memory card	12	handsfree speaker	25	turn off a call alert	39
battery use & safety	12	codes & passwords	26	recent calls	39
turn phone on & off	16	lock & unlock phone	26	redial	39
make a call	16	personalize	27	return a call	40
answer a call	16	profiles	27	caller ID	40
end a call	16	themes	29	emergency calls	41
store a phone number	17	ringtone	31	voicemail	41
call a stored phone number	17	wallpaper	31	entertainment	42
SIM and phone contacts	17	screen savers	32	photos	42
your phone number	18	home screen shortcuts	32	videos	47
basics	19	main menu appearance	33	music	50
display	19	display appearance	33	music player	52

FM radio	59	network	87
browser.....	61	personal organizer	88
messages	63	security.....	90
text messaging	63	fun & games.....	91
email	66	service & repairs	92
connections	67	SAR Data	93
synchronize with		EU Conformance.....	95
Mobile Backup.....	67	OSS Information.....	95
file manager	67	index	97
cable connections.....	69		
Bluetooth® wireless	70		
Wi-Fi	75		
TV Out.....	76		
phone updates	77		
other features	78		
advanced calling	78		
phonebook	81		
personalize	84		
call times & costs	85		
handsfree	86		

menu map

main menu

-  **Gallery Link**
-  **Call Log**
-  **t-zones**
-  **IM & Email**
-  **Messages**
 - Create Message
 - Inbox
 - Folders
 - Templates
 - Drafts
 - Outbox
 - Online Storage
 - Call Voicemail

-  **Fun & Apps**
 - Camera
 - Video Camera
 - Voice Notes
 - FM Radio
 - Organizer
 - File Manager
 - Alarm Clock
 - Calculator
 - Calendar
 - World Clock
 - Dialing Services
 - Task List
 - Notes
 - Synchronization
 - Web Access
 - t-zones
 - My Bookmarks
 - Web Pages
 - History
 - Go to URL
 - Browser Setup
 - Help

-  **Multimedia**
 - Music
 - Pictures
 - Videos
 - Voice Notes
 - Ringtones
 - Wallpapers and Graphics
 - My Album

-  **Phonebook**

-  **Settings**
 - (see next page)

This is the standard main menu layout. **Your phone's menu may be different.**

To change your home screen shortcuts and your main menu appearance, see page 32.

Tip: Press  to exit the current menu, or press  to exit all menus.

* optional features

settings menu

- **Wi-Fi**
 - Current connection
 - Available Networks
 - Saved Networks
 - Quick Connect
 - Set Up Wi-Fi
 - **Profiles**
 - **Themes**
 - **Connections**
 - Bluetooth®
 - USB Setting
 - Kodak EasyShare
 - Media Synchronization
 - Memory Card
 - Modem
 - USB Printing
 - TV Out
 - **Home Screen**
 - NaviKey Shortcuts *
 - Change Wallpaper
 - **Call Settings**
 - Speed Dial
 - Call Forward
 - In-Call Setup
 - Hearing Aid
 - In-Call Timer
 - Answer Options
 - In-Call Message Alert
 - Roam Alert
 - Call Waiting
 - Auto-Redial
 - Call Drop Tone
 - Dialing Setup
 - My Caller ID
 - DTMF
 - Hyphenation
 - Search Mode
 - Fixed Dialing
 - My SIM Number
 - Active Line *
 - **Phone Settings**
 - Display Settings
 - Display Timeout
 - Screensaver
 - Brightness
 - Airplane Mode
 - Battery Meter
 - Time & Date
 - Language
 - Talking Phone
 - Text Entry
 - Reset
 - Reset All Settings
 - Delete All Data
 - Delete Memory Cards
 - **(continued next column)**
 - **Phone Settings (continued)**
 - View Memory
 - Properties
 - Legal Notices
 - Java™ System
 - OTA Updates
 - Headset Settings
 - Auto-Answer
 - Voice Dial
 - **Download Manager**
 - **Security**
 - Phone Lock
 - Application Lock
 - SIM Lock
 - Change Passwords
 - Barred Services
 - Certificates
 - **Synchronization**
 - **Network**
 - Current Network
 - Scan Avail. Networks
 - Find New Network
 - My Network List
 - Search Setup
 - Service Tone
- * optional features

Use and Care

To care for your Motorola phone, please keep it away from:



liquids of any kind

Don't expose your phone to water, rain, extreme humidity, sweat, or other moisture. If it does get wet, don't try to accelerate drying with the use of an oven or dryer, as this may damage the phone.



extreme heat or cold

Avoid temperatures below 0°C/32°F or above 45°C/113°F.



microwaves

Don't try to dry your phone in a microwave oven.



dust and dirt

Don't expose your phone to dust, dirt, sand, food, or other inappropriate materials.



cleaning solutions

To clean your phone, use only a dry soft cloth. Don't use alcohol or other cleaning solutions.



the ground

Don't drop your phone.

get started





CAUTION: Before using the phone for the first time, read the *Important Safety and Legal Information* guide included in the box.



about this guide

This guide shows how to locate a menu feature as follows:

Find it:  >  **Messages** > **Create Message**

This means that, from the home screen:

- 1 Press the *center key*  to open the menu.
- 2 Press the *navigation key*  to scroll to  **Messages**, and press  to select it.

- 3 Press the navigation key  to scroll to **Create Message**, and press  to select it.

This guide uses the following symbols:

symbols



This means a feature is network, SIM card, or subscription dependent and may not be available in all areas. Contact your service provider for more information.

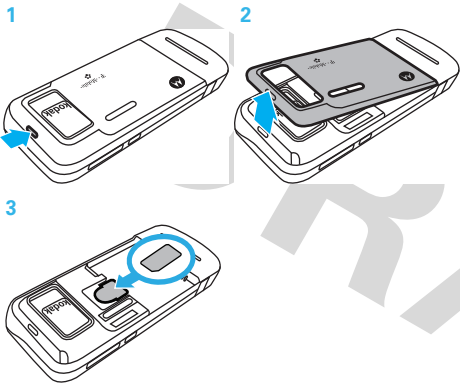


This means a feature requires an optional accessory.

insert your SIM card

Caution: Don't bend or scratch your SIM card. Keep it away from static electricity, water, and dirt.

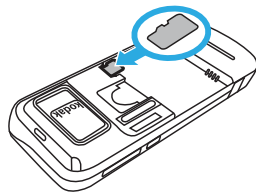
Your *Subscriber Identity Module* (SIM) card stores your phone number and other information.



insert a memory card



You can store music, photos, and other multimedia files on an optional, removable microSD memory card.



Caution: Don't bend or scratch your memory card. Keep it away from static electricity, water, and dirt. Turn off your phone before you install or remove the memory card.

Note: Your phone can use a memory card with up to 4 GB capacity (greater than 1 GB storage guaranteed only for SanDisk microSD cards).

battery use & safety

IMPORTANT: HANDLE AND STORE BATTERIES PROPERLY TO AVOID INJURY OR DAMAGE. Most

battery issues arise from improper handling of batteries, and particularly from the continued use of damaged batteries.

DON'Ts

- **Don't disassemble, crush, puncture, shred, or otherwise attempt to change the form of your battery.**
- **Don't let the phone or battery come in contact with water.** Water can get into the phone's circuits, leading to corrosion. If the phone and/or battery get wet, have them checked by your carrier or contact Motorola, even if they appear to be working properly.
- **Don't allow the battery to touch metal objects.** If metal objects, such as jewelry, stay in prolonged contact with the battery contact points, the battery could become very hot.

- **Don't place your battery near a heat source.** Excessive heat can damage the phone or the battery. High temperatures can cause the battery to swell, leak, or malfunction.

Therefore:

- Do **not** dry a wet or damp battery with an appliance or heat source, such as a hair dryer or microwave oven.
- Avoid leaving your phone in your car in high temperatures.

DOs

- **Do avoid dropping the battery or phone.** Dropping these items, especially on a hard surface, can potentially cause damage.
- **Do contact your service provider or Motorola if your phone or battery has been damaged from dropping or high temperatures.**

IMPORTANT: USE MOTOROLA ORIGINAL PRODUCTS FOR QUALITY ASSURANCE AND SAFEGUARDS.

To aid consumers in identifying authentic Motorola batteries from non-original or counterfeit batteries (that may not have adequate safety protection), Motorola provides holograms on its batteries. Consumers should confirm that any battery they purchase has a “Motorola Original” hologram.

Motorola recommends you always use Motorola-branded batteries and chargers. Motorola mobile devices are designed to work with Motorola batteries. If you see a message on your display such as **Invalid Battery** or **Unable to Charge**, take the following steps:

- Remove the battery and inspect it to confirm that it has a “Motorola Original” hologram;
- If there is no hologram, the battery is not a Motorola battery;
- If there is a hologram, replace the battery and retry charging it;

- If the message remains, contact a Motorola Authorized Service Center.

Important: Motorola’s warranty does not cover damage to the phone caused by non-Motorola batteries and/or chargers.

Warning: Use of a non-Motorola battery or charger may present a risk of fire, explosion, leakage, or other hazard.

PROPER AND SAFE BATTERY DISPOSAL AND RECYCLING

Proper battery disposal is not only important for safety, it benefits the environment. Consumers may recycle their used batteries in many retail or service provider locations. Additional information on proper disposal and recycling may be found on the Web:

- www.motorola.com/recycling
- www.rbrc.org/call2recycle (in English only)

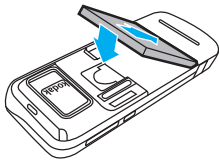
Disposal: Promptly dispose of used batteries in accordance with local regulations. Contact your local recycling center or national recycling organizations for more information on how to dispose of batteries.



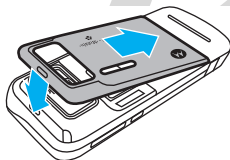
Warning: Never dispose of batteries in a fire because they may explode.

insert the battery

1

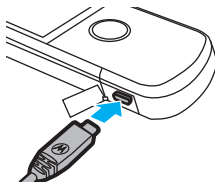


2











charge the battery

New batteries are not fully charged. Open the protective cover on your phone's micro-USB port, and insert the battery charger connector into your phone. Plug the other end of the battery charger into an electrical outlet. The battery charge indicator light (see page 2) shows when the battery is charging. The display shows **Charge Complete** when finished.




extend battery life

- To make your **display** turn off sooner, press  >  **Settings** > **Phone Settings** > **Display Settings** > **Display Timeout** > **5 Seconds**.

- To turn off the **screensaver**, press  >  **Settings** > **Phone Settings** > **Display Settings** > **Screensaver** > **Off**.
- To turn off the **animated screensaver**, press  >  **Settings** > **Themes** > **Options** > **Edit**, scroll to and select the **images** tab , scroll to and select **Screensaver**, scroll to **None**, press  to select it and then **Save**.
- To turn off **Bluetooth®** power when you're not using it, press  >  **Settings** > **Connections** > **Bluetooth**, press **Options** > **Setup Bluetooth** > **Bluetooth Power** > **Off** or select **Shortcuts** > **Turn Off Bluetooth** from the home screen.

turn phone on & off

Note: The *lock/unlock* side key lets you lock and unlock the keypad. Slide down to lock and up to unlock, see page 2.

Press and hold the *power/end key*  for a few seconds, or until the display turns on or off.



make a call


Enter a phone number and press the *send key* .

Tip: To **voice dial** a call, see your *User's Guide*.

answer a call

When your phone rings and/or vibrates press  to answer.

end a call

To hang up, press .

store a phone number

To store a phone number in your **Phonebook**:

- 1 Enter a phone number in the home screen.
- 2 Press **Save**.
- 3 Enter a name for the phone number, and enter other information as desired.
- 4 Press **Save** to store the contact.

Tip: To learn more about storing contacts on your phone, see your *User's Guide*.


call a stored phone number


To call a number stored in your contacts list:

Find it:  >  **Phonebook**

- 1 Scroll to the contact.

Shortcut: In the contacts list, press keypad keys to enter the first letters of the contact you want.

Press  to go to the contact.

- 2 Press  to call the contact.

SIM and phone contacts

You can store a new contact in **phone memory**, or store the contact both in phone memory and on your **SIM card**. When you choose to store a contact to both locations, only the contact's name and phone number are stored on the SIM card.

Note: If you have contacts stored on your SIM card, but the contacts aren't visible when you open the contact list, you need to copy the contacts into phone memory. Press **Options > Import Contacts > SIM Card > Options > Select All > Import**.

your phone number

To see your phone number:

Find it:  >  **Settings** > **Call Settings** > **My SIM Number**

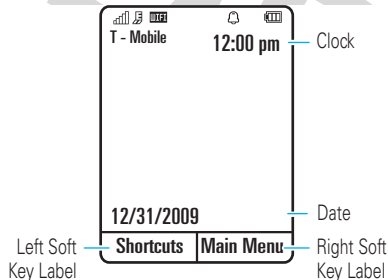
To see your phone number while you're on a call, press **Options** > **My Tel. Numbers**.

To store or edit your name and phone number on your SIM card, select the field you want to edit. If you don't know your phone number, contact your service provider.


basics

display

The *home screen* appears when you turn on your phone.




Note: Your home screen may look different, depending on your service provider.

To dial a number from the home screen, press number keys and .

Press the **Main Menu** soft key to open the main menu.




Press **Shortcuts** in the home screen to create a text message, set an alarm, open your browser, or connect to W-Fi or Bluetooth® devices.



Press the *navigation key*  up, down, left, or right in the home screen to open basic features. **To show, hide, or change feature icons** in the home screen, see page 32.

Tip: Want some help? Press **Main Menu** >  **Fun & Apps** > **Help**. Select a **Help** topic to find information about phone features.

Status indicators appear at the top of the home screen:





- 1 Signal Strength Indicator** – Show the strength of the wireless network connection.
- 2 EDGE/GPRS Indicator** – Shows when your phone is using a high-speed *Enhanced Data for GSM Evolution* (EDGE) network connection , or *General Packet Radio Service* (GPRS) network connection .
- 3 Wi-Fi Indicator** – Shows  when Wi-Fi is powered on
- 4 Notification Indicator** – Shows when you have a new message, missed call, or other notification. To show notifications, Press **Shortcuts > View Notifications**.


5 Message Indicator – Shows when you receive a new text  or voicemail  message.





6 Profile Indicator – Shows the alert profile setting:


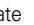
 = Normal (ring only)

 = Meeting (vibrate then ring)

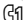
 = Vibrate

 = Car (ring and vibrate)


 = Silent

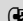
7 Active Line Indicator – Shows  to indicate an active call, or  to indicate when call forwarding is on. Indicators for dual-line-enabled SIM cards can include:



 = line 1 active

 = line 2 active

 = line 1

 = line 2

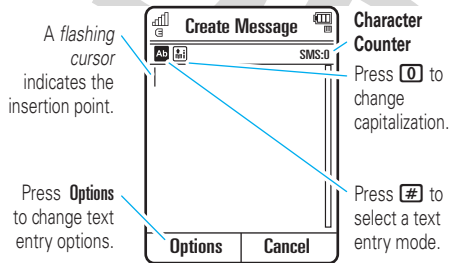
call forward on

call forward on

- 8 Battery Level Indicator** – Vertical bars show the battery charge level. Recharge the battery when your phone shows **Low Battery**.

text entry

Some features let you enter text.



text entry modes

[Ab]	"word" mode (see page 22)
-------------	---------------------------

text entry modes

[Ab]	"abc" mode (see page 22)
[123]	numeric mode (see page 23)
[;@]	symbol mode (see page 23)


To **change** text entry settings and languages:

Find it: > Settings > Phone Settings > Text Entry


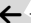

Change text case: Press **[0]** to change text case to all capital letters (**[A]**), next letter capitalized (**[C]**), or next letter lowercase (no symbol).

Set word learning: Your phone can learn the words you enter, to improve text prediction and completion. Press **Options** > **Text Entry** > **Set Text Prediction** > **Learn My Words**. Your phone shows **[L]** when word learning is active.



Set text completion: Set your phone to complete words based on the characters you enter. Press **Options**

> **Text Entry** > **Set Text Prediction** > **Offer Completions**. Your phone shows  when text completion is active.





Enter punctuation: Press  to enter punctuation or other characters.



Edit or delete text: Press  to move the cursor to the right of text you want to edit. Press the *clear/back key*  to delete the character left of the cursor. Hold  to delete the entire word.

word mode

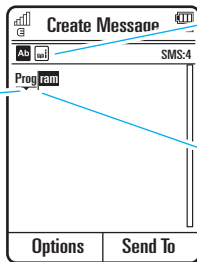
Press  in a text entry screen to switch to “word” predictive text entry mode. Your phone shows  in the display.



Word mode lets you enter words using one keypress per letter. The phone predicts each word as you enter it.


For example, if you press    , your display might show:

Press  up/down to see other words. Press  to select a word.



Press  to enter **Prog** and a space.



You can turn text completion on () or off () .

Press  to delete the character left of the cursor.

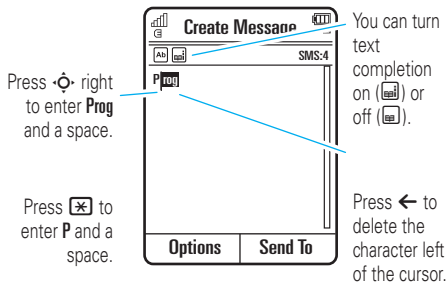
abc mode

Press  in a text entry screen to switch to “abc” text entry mode. Your phone shows  in the display.

To enter text, press a keypad key repeatedly to cycle through the letters and number on the key. Repeat this step to enter each letter.

For example, if you press **7** one time, your display might show:

After two seconds, the character is accepted and the cursor moves to the next position.



When text completion is activated, your phone tries to guess the rest of the word:

- Press **↶** to select only the letters you entered, without the suggested word.

- Press **↶** right to enter the suggested word and a space.
- If you want a different word, press keypad keys to enter the remaining letters.

numeric mode

Press **#** in a text entry screen until you see **123**. Press the number keys to enter the numbers you want.


Tip: Just need one number? To enter a number quickly, press and hold a number key until the number appears.

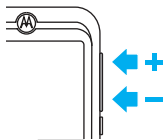
symbol mode

Press **#** in a text entry screen until you see **☑**. The display shows the symbol associated with each keypad key. Press **↶** up/down repeatedly to see different symbols. To insert a symbol, press its key, or scroll to it and press **↶**.

volume

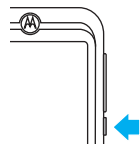
Press the *volume keys* to:

- turn off an incoming call alert
- change earpiece or speakerphone volume during a call
- change playback volume for a song or video
- set your phone's alert profile in the home screen (press the volume keys to scroll to a profile, then press .



lock/unlock key

The *lock/unlock key* lets you lock and unlock the keypad. Slide down to lock and up to unlock.




voice commands

You can use voice commands to tell your phone what to do.

Note: Not all languages support voice commands.

voice dial a call

You can dial a contact list entry by speaking its name, or dial any phone number by speaking its digits.


- 1 Press and hold . The phone loads the voice recognition software, then prompts you to say a command or name.
- 2 Wait for the beep, then say the name of an entry as it appears in your contact list. Your phone confirms the name and makes the call.

or

Say “Dial Number.” Your phone prompts you to speak the digits in the phone number. Speak the



digits. Your phone confirms the number and makes the call.

Tips:

- You can say a contact's name and number type together. For example, say "John Smith mobile" to call the mobile number stored for John Smith.
- For voice command help, press and hold , then press **Help**.

voice activate phone functions

You can use voice commands to open applications and perform many basic phone functions.

- 1 Press and hold . The phone prompts you to say a command.
- 2 Press and hold  to see the list of voice commands.

talking phone

You can set your phone to recite caller ID information for incoming messages, read the names of menu features or contact list entries, read messages you receive, and provide audio feedback for phone functions.

Find it:  >  **Settings** > **Phone Settings** > **Talking Phone**

Shortcut: Press and hold . When the phone prompts you to say a command, say "Talking Phone."

handsfree speaker

During a call, press **Options** > **Speaker On** to turn the handsfree speaker on. Your display shows the speakerphone indicator until you turn it off (press **Options** > **Speaker Off**) or end the call.

Note: The use of wireless phones while driving may cause distraction. Discontinue a call if you can't


concentrate on driving. Additionally, the use of wireless devices and their accessories may be prohibited or restricted in certain areas. Always obey the laws and regulations on the use of these products.

codes & passwords

Your phone's four-digit **unlock code** is originally set to **1234**. The six-digit **security code** is originally set to **000000**. If your service provider didn't change these codes, you should change them:

Find it:  >  Settings > Security > Change Passwords

You can also change your **SIM PIN** codes or call barring password.



If you forget your unlock code: At the **Please verify the Unlock Code** prompt, try entering 1234 or the last four digits of your phone number. If that doesn't work, press  to enter your six-digit security code instead.

If you forget other codes: If you forget your security code, SIM PIN code, PIN2 code, or call barring password, contact your service provider.

lock & unlock phone

You can lock your phone to keep others from using it. To lock or unlock your phone, you need the four-digit unlock code.

To **manually lock** your phone:

Find it:  >  Settings > Security > Phone Lock > Lock Now






To **automatically lock** your phone whenever you turn it off:

Find it:  >  Settings > Security > Phone Lock > Lock at Power On > On

personalize


profiles

You can quickly change your phone's alert style or profile to match your activity or environment. Each profile uses a different set of ringtones or vibrations for incoming calls and other events. The alert profile indicator shows at the top of the home screen (see page 20).

-  = **Normal** (ring only)
-  = **Meeting** (vibrate then ring)
-  = **Vibrate**
-  = **Car** (ring and vibrate)
-  = **Silent**

To change your profile: From the home screen, press the external volume keys on the side of your phone. Alternatively, from the home screen press **Shortcuts** > **Change Alert Style** or **Change Profile**.

The **Silent** profile silences your phone until you set another profile.








Shortcut: From the home screen, press and hold  to quickly switch between **Vibrate Only** and **Ring Only**.

change alert style settings

You can change the ringtones that a standard alert style uses to notify you of incoming calls and other events. You can also change the alert style's ring volume, keypad tone volume, and media playback volume settings. For dual-line-enabled SIM cards, you can set different ringtones to identify incoming calls on line 1 or line 2.

Note: You can't set a ringtone for the **Silent** alert style, or change some settings for some alert styles.

Find it:  >  **Settings** > **Profiles** > **Alert Style**
> *alert style*

- 1 Press  left/right to select the **alerts** tab , **volume** tab , **messages** tab , or **settings** tab .
- 2 Press  up/down to scroll to the setting you want to change, then press .
- 3 Press **Back** to exit and save your changes.

To **reset** the default settings for an alert style:

Find it:  >  **Settings** > **Profiles** > **Alert Style**
> *alert style*, press **Options** > **Reset**



create a new profile

To create a **new** profile with the ringtones and volume settings you specify:

Find it:  >  **Settings** > **Profiles** > **Alert Style**
> *alert style*

- 1 Change alert style settings as described in the previous section.
- 2 Press **Options** > **Save as Profile**.
- 3 Enter a name for the profile, then press **Save** to save it.

To create **additional** profiles:

Find it:  >  **Settings** > **Profiles**, press **Options**
> **Create Profile**

Note: Profile alert settings also can be set by the theme. When you apply a new theme, you can choose to apply the theme's alert settings to the current profile. Selecting this option **changes** the current profile to use the theme alert settings.

edit or delete profiles

To **edit** a profile:

Find it:  >  **Settings** > **Profiles**, scroll to the profile, press **Options** > **Edit**



Note: You can't edit the **Silent** profile, or change some settings for some profiles.

To **delete** a user-defined profile:


Find it:  >  **Settings** > **Profiles**, scroll to the profile, press **Options** > **Delete**

restore alert style settings

To delete all user-defined profiles and restore your phone's original alert style settings:

Find it:  >  **Settings** > **Profiles**, press **Options** > **Reset**

themes

Use a phone *theme* to personalize the look and sound of your phone. Most themes include a wallpaper image, screensaver image, and ringtones. 

To **apply** a theme:

Find it:  >  **Settings** > **Themes** > *theme*

To **download** a theme, see page 61.

To **delete** a theme:



Find it:  >  **Settings** > **Themes**, scroll to the theme, then press **Options** > **Manage** > **Delete**

Note: You can delete only downloaded themes or custom themes you create.

preview ringtones

To preview the ringtones on your phone, and choose the ringtone a theme uses.





Find it:  >  **Settings** > **Themes**, press **Options** > **Edit** > **Call Alert** > **Ringtones** > **Sounds and Ringtones** > **Preloaded Ringtones**

- 1 Press  up/down to scroll and listen to each ringtone in turn.
- 2 Press  to select the highlighted ringtone.
- 3 Press **Save** to save your selection.

apply a photo as wallpaper

To use a photo as a background *wallpaper* image in your home screen:

Find it:  >  **Settings** > **Themes**, press **Options** > **Edit**





- 1 Press  right to select the **images** tab .
- 2 Press  down to scroll to **Wallpaper**, then press  to select it.
- 3 Scroll to the photo you want to use, then press **Select**.

Note: To search for photos on the memory card, select **Back to Pictures** > **Back to My Files** > **Memory Card** > **Pictures**.

- 4 Press **Save** to save your selection.






Photos that you copy to your phone from another device may not scale correctly when applied as wallpaper images. To **resize a wallpaper photo**:

Find it:  >  **Settings** > **Themes**, press **Options** > **Edit**

- 1 Press  right to select the **images** tab .
- 2 Press  down to scroll to **Wallpaper Layout**, then press  to select it.
- 3 Scroll to **Fit-to-Screen**, then press **Select**.
- 4 Press **Save** to save the setting.

modify a theme

Find it:  >  **Settings** > **Themes**, scroll to the theme, press **Options** > **Edit**

- 1 Press  left/right to select the **sounds** tab  or **images** tab .
- 2 Press  up/down to scroll to the setting you want to change, then press .
- 3 Scroll to the image or sound file you want, then select it.
- 4 Press **Save** to save your theme changes.

The **Wallpaper** appears as a background image in your home screen.

The **Screensaver** appears in the display after a specified period of inactivity.

Skins set the look and feel of your phone's display.



To **reset** the standard settings for a modified theme:

Find it:  >  **Settings** > **Themes** > *theme*, press **Options**
> **Manage** > **Reset**

To **restore** the default theme on your phone:


Find it:  >  **Settings** > **Themes**, press **Options** > **Manage**
> **Restore to Default**

create a new theme

Find it:  >  **Settings** > **Themes**, press **Options**
> **Create Theme** or **Create a Copy**

ringtone

Change your ringtone:

Find it:  >  **Settings** > **Themes**, press **Options** > **Edit**
> **Ringtone** > **Ringtones** > **Preloaded Ringtones**, scroll to a ringtone and press **Select**

To learn more about using themes, see your *User's Guide*.

wallpaper




Change the background wallpaper image in the home screen:

Find it:  >  **Settings** > **Home Screen** > **Change Wallpaper**, scroll to an image, press **Select**

screen savers

Personalize your phone with floating animated screen savers in the display:

Find it:  >  Settings > Themes, press Options > Edit

- 1 Press  right to select the **images** tab .
- 2 Select **Screen Saver** and then highlight an animated screensaver.
- 3 Press  to preview the screensaver or **Select** to select it.
- 4 Press **Save** to save your setting.


The **Screen Saver** appears in the display after the timeout period.

Find it:  >  Settings > Phone Settings > Display Settings > Screensaver

Find it:  >  Settings > Phone Settings > Display Settings > Display Timeout

home screen shortcuts

Note: This feature is unavailable when **myFaves** is active and running in the home screen.

From the home screen, you can press the navigation key up, down, left, or right as shortcuts to your favorite features. You can change the shortcuts to suit your needs. 


To **change** navigation key shortcut icons in the home screen:

Find it:  >  Settings > Home Screen > NaviKey Shortcuts > Left, Right, Up, or Down

Select a direction, then choose the feature you want to open when you press the navigation key in that direction.

To **show or hide** navigation key shortcut icons in the home screen:

Find it:  >  Settings > Home Screen > NavKey Shortcuts
> Icon Display > Show or Hide

Tip: You can press  to select the features in the home screen even when the icons are hidden.

main menu appearance

You can personalize the main menu to appear as a grid of graphic icons, a text-based list, or a set of spinning menu icons that you can scroll through:

Find it: From the main menu, press **Options** > **View By**
> **Grid** or **List** or **Spinner**

You can change the order of the main menu features. Press **Options** > **Reorder**, scroll to the feature you want to move, press **Grab**, scroll to the destination location, press **Insert**.

display appearance

To set the **brightness** of your internal display:

Find it:  >  Settings > Phone Settings > Display Settings
> **Brightness**

To save battery life, the **display** can turn off when you're not using your phone. To set the display timeout delay interval:

Find it:  >  Settings > Phone Settings > Display Settings
> **Display Timeout**

To turn the internal display **screensaver** on or off:

Find it:  >  Settings > Phone Settings > Display Settings
> **Screensaver** > **On** or **Off**

Tip: To extend battery life, turn off the screensaver.

time & date

Your phone can automatically update the time and date. It uses the time and date for the **Calendar**.



To **synchronize** time and date with the network:

Find it: > Settings > Phone Settings > Time & Date > Auto-Update Time > On

To **manually** set the time and date:

Find it: > Settings > Phone Settings > Time & Date > Auto-Update Time > Off, then > Time and Date

To adjust time and date, press left/right to scroll to a setting, then press up/down to change it. Press **Set** to save your settings.

To show a **12-hour or 24-hour** digital clock in the home screen:

Find it: > Settings > Phone Settings > Time & Date > Time Format > 12 Hour Clock or 24 Hour Clock

To set the **date format** in the home screen:

Find it: > Settings > Phone Settings > Time & Date > Date Format

To set your **time zone**:

Find it: > Settings > Phone Settings > Time & Date > Time Zone, then select a city in your time zone

Shortcut: Press keypad keys to enter the first letters of the city you want.

answer options

You can answer an incoming call by pressing any key. To turn any key answer option on or off:

Find it: > Settings > Call Settings > In-Call Setup > Answer Options > Any Key Answer

Note: You press to answer a call.

hearing aids


If you have a hearing aid set to Telecoil mode, you can optimize your phone's earpiece sound for your hearing aid:

Find it:  >  **Settings** > **Call Settings** > **In-Call Setup**
> **Hearing Aid** > **Telecoil On**

Tip: Did you change your mind? During a call, you can press **Options** then choose **Telecoil On** or **Telecoil Off**.

calls

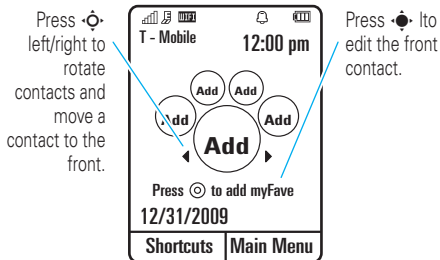
myFaves

Assign your five favorite contacts to quick-access locations on your phone's home screen. To call a myFaves contact, just select the contact's picture icon in the home screen and press . You can quickly send messages to your myFaves contacts, and share photos, videos, and audio postcards with them.





create myFaves contacts

The myFaves icons appear in the home screen shortly after you turn on your phone.



To add a new myFaves contact:

- 1 Press  left or right to move an unused contact icon to the front position.
- 2 Press  to add information for the front contact.

- 3 Select **Create New** to create a new myFaves contact.

or

Select **Get From Phone Book** to use an existing phonebook entry.

- 4 Scroll to **Name** and press **Change** to enter the contact's name, if necessary. Press keypad keys to enter the contact's name (to enter text, see page 21).
- 5 Scroll to **Number** and press **Change** to enter the contact's phone number, if necessary. Press keypad keys to enter the number.
- 6 Scroll to **Icon** and press **Change** to add a photo or select an icon for the contact.


If you take a new photo or use an existing photo, your phone crops the photo to fit the circular picture icon in the home screen.

- 7 Scroll to **Ringtone** and press **Change** to assign a distinctive ringtone to the contact.

- 8 Press **Save** to save the contact.


- 9 Press **Yes** to confirm the save.

T-Mobile sends you a text message to confirm when the myFaves contact is updated. Press **Save** to save the message, or **Delete** to delete it.





In the home screen, press  left or right to move other unused contact icons to the front and add contact information for them.

Your myFaves contacts are automatically stored in the **Phone Book** (if they're not already stored), and are tagged as myFaves contacts.

use myFaves contacts

In the home screen, press  left or right to select a contact. Your phone shows if you've missed any calls or messages from the selected contact.

- To **call** the contact, press .

- To send a **message, IM, email, picture, video, voice note**, or **audio postcard** to the contact, press , press  to scroll to the action you want to perform, then press  to select it.
- To **edit** the contact, press  > **Options** to select the following contact options:

options	
Edit Profile	Edit contact information.
Change Order	Change the location of the contact icon in the home screen.
Replace Contact	Replace the contact with a new contact.

myFaves settings

You can turn off or change the myFaves picture icons in the home screen.

Find it:  >  **Settings** > **myFaves Settings**


options	
Display	Select to turn On or Minimize contact icons in the home screen.
Animation	Turn picture icon animation On or Off in the home screen.
Menu Style	Show myFaves communication options in a List or Circle view.
Refresh myFaves	Apply changes and return to the home screen.
myFaves Icons	Delete myFaves icons stored on your phone, or change the icons assigned to your contacts.
Get More Icons	Download more myFaves icons from the Web site.
About myFaves	Learn about myFaves service.

turn off a call alert



Press the external volume keys on the side of your phone to turn off the ringer before answering a call.



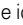
recent calls



Your phone keeps lists of incoming and outgoing calls, even for calls that didn't connect. The most recent calls are listed first. The oldest calls are deleted as new calls are added.

Shortcut: Press  in the home screen to see the **Dialed Calls** list.



Find it:  >  **Call Log** (if **myFaves** is on, just press  up in your home screen)


- 1 Press  left/right to select a call list: **All Calls**, **Dialed Calls**, **Answered Calls**, **Missed Calls**, or **Frequent Calls**.
- 2 Press  up/down to scroll to a phone number.

Icons indicate if the call was incoming , outgoing , or missed . A check mark next to the icon indicates a connected call.

- To call the number, press .
- To see call details (like time and date), press .
- Press **Options** to perform other operations on the number (send a message, save to contacts), or to set recent call options.

redial


- 1 Press  from the home screen to see the **Dialed Calls** list.
- 2 Scroll to the number you want to call, then press .

If you hear a **busy signal** and see **Call Failed**, press  or **Retry** to redial the number. When the call goes through, your phone shows **Connected** and connects the call.



return a call

Your phone keeps a record of your unanswered calls, and shows **X Missed Calls**, where **X** is the number of missed calls.

When you see the **X Missed Calls** message, press  to see the **Missed Calls** list. Scroll to the call you want to return, then press .

caller ID

Calling line identification (caller ID) shows the phone number for an incoming call in your phone's display.



Your phone shows the caller's name and picture when they're stored in your contact list, or **Incoming Call** when caller ID information isn't available.

Note: Picture IDs aren't available for contacts stored on the SIM card.

Tip: Want to know who's calling without even looking at your phone? To give one of your contacts a special ringtone, see page 82.

To show or hide your phone number for the next outgoing call, enter the number you want to call, then press **Options > Show ID or Hide ID**.


To show or hide **your phone number** for all calls:

Find it:  >  **Settings > Call Settings > Dialing Setup > My Caller ID > All Calls > Show ID or Hide ID**


emergency calls

Your service provider programs one or more emergency phone numbers, such as 999, 911 or 112, that you can call at any time, even when your phone is locked or the SIM card is not inserted.


Note: Check with your service provider, as emergency numbers vary by country. Your phone may not work in all locations, and sometimes an emergency call cannot be placed due to network, environmental, or interference issues. Do not solely rely on your wireless phone for essential communications such as medical emergencies.

To make an emergency call: Turn your phone on, exit any open application such as games, dial the emergency number, then press the *send key*  to call the emergency number.

voicemail


Your network stores the voicemail messages you receive. To listen to your messages, call your voicemail number. 

Note: Your service provider may include additional information about using this feature.

When you **receive** a voicemail message, your phone display shows **New Voicemail** and the status icon .

To **check** voicemail messages:

Find it:  >  Messages > Call Voicemail

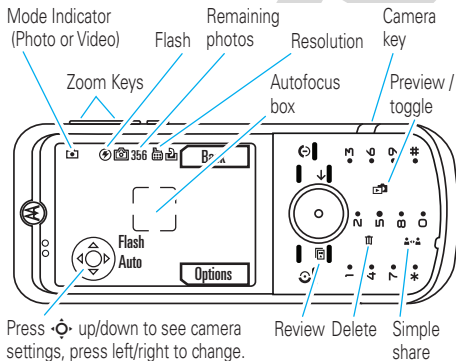
Shortcut: Your service provider may store your voicemail phone number in speed dial location #1. If so, you can press and hold  in the home screen to listen to your voicemail message(s).

entertainment

photos

take a photo & send it

Open the lens cover to launch the camera. The phone's display acts as the camera *viewfinder*.



Note: To turn **Auto-Save** off, see page 43.

- 1 Gently press and hold the camera key halfway until the autofocus box turns green. The photo in the viewfinder is in focus.





Note: If the autofocus box turns red, release the camera key and try again.

- 2 Fully press the camera key to take the photo.



- To store the photo, press .
- To send/share the photo, press .
- To discard the photo, press .
- To select other photo options, press **Options**. You can choose to save, discard, send (in a message, email, or via Bluetooth), apply (as


wallpaper, screensaver or contact), edit, or print (via Bluetooth, USB or memory card).

3 Press camera mode keys:

-  - to review photo
-  - to toggle between photos and viewfinder
-  - to delete photo
-  - to activate **Simple Share** feature.

view a photo

To view a stored photo that you've taken simply press  or, from the viewfinder, press .

Find it:  >  **Multimedia** > **Pictures** > **Captured Pictures**
> *photo*

share a photo

To activate the **Simple Share** feature press .

Then set how you want to share the photo (**MMS**, **Email**, **Bluetooth** or **Kodak Gallery**), then select **Yes** if you want to use this method all the time.

Enter your text, if necessary, then press **Send to** and specify message recipients for the photo.

The change your **Simple Share Settings**:

Find it:  >  **Fun & Apps** > **Camera**, press **Options**
> **Camera Settings**, press **Select** > **Simple Share Settings**

auto-save

Your phone can automatically save the photos you take.


To turn auto-save feature on or off:

Find it:  >  **Fun & Apps** > **Camera**, press **Options**
> **Camera Settings**, press **Select** > **Auto-Save** > **Enable** or **Disable**

Then set the storage location for auto-saved photos:

Find it:  >  **Fun & Apps** > **Camera**, press **Options**
> **Camera Settings**, press **Select** > **Storage Location** > **Phone** or **Memory Card**


view slideshow

To view a slideshow of the photos that you've taken simply press  > **Options** > **Slideshow** or from the viewfinder press  > **Options** > **Slideshow**.



panorama mode



You can take panoramic photos.

Find it:  >  **Fun & Apps** > **Camera**, press **Options** > **Panorama**, press **Select**

Press  to take a photo, then move the viewfinder until the red box turns green and automatically takes more photos.

edit a photo

- 1 Press  or from the viewfinder press .
- 2 Select the photo you want, then press **Options** > **Edit** > **Options**:

- **Rotate** - press  left or right to rotate your photo 90 degrees counter-clockwise or clockwise.
 - **Crop** - set the size to crop your photo.
 - **Mirror** - press  left or right to mirror horizontal your photo.
 - **Resize** - the width or height of your photo.
 - **Style** - set a style for your photo (**Options** > **Grayscale**, **Sepia**, **Negative**, **Reddish**, **Greenish**, **Bluish**, **Brightness**, **Contrast**, **Sharpen** or **Blur**).
 - **Add elements** - select **Options** to add **Graphic**, **Border**, **Text** or **Timestamp** elements to your photo.
- 3 After making your changes to the photo, press **Save**.
 - 4 At the prompt "Are you sure you want to overwrite moto_0034.jpg file?"; press **Yes**.

Note: You can also enhance the quality of your photo, press **Options** > **Apply Kodak Perfect Touch**.

upload photos with KODAK Gallery Link

Use KODAK Gallery Link to upload your photos from your phone to the KODAK Gallery Web site. Share and print your photos from the KODAK Gallery Web site.



Find it:  >  **Gallery Link**

Note: Please make sure you set up your Internet Profile before using KODAK Gallery Link. To set up your profile, please contact your service provider.

- 1 Press **Add Account > Create New**
- 2 You will be asked to enter an email address, password, and to select a region, in the 'Create Account' screen.
- 3 After your account is setup press **Upload to Gallery > Select** to send a photo to KODAK Gallery.

Tip: To send more than one photo press **Options > Select Multiple**. You can set **Simple Share** to **Kodak Gallery** see page 43.

Note: Sending photos uses the data network on your phone. The preferred method of sending photos is to use a Wi-Fi network. See your *User's Guide* for Wi-Fi setup details. If you send photos over the GPRS network, separate data charges may apply. Contact your service provider for details.



- 4 Visit the KODAK Gallery Web site **www.kodakgallery.eu.com** to view and manage your photos.

upload photos to a T-Mobile album

You can send pictures to your own online picture album, to store all of your pictures in one place.

To send a picture to your album, just send it in a picture message to **222**. When the message goes

through, you receive a message with a link to your album.

To open your album on your phone, press **•◂◃•** > **📷 Multimedia** > **My Album**.

To open your album from a computer, go to www.t-mobilepictures.com.

camera settings

When the camera viewfinder is active, you can use the navigation key **•◂◃•** to adjust camera settings.

Press **•◂◃•** up or down to scroll to a setting, then press **•◂◃•** left or right to change it:

settings	
Low Light Mode	Press •◂◃• left/right to select On or Off .
Focus	Press •◂◃• left/right to select Automatic , Landscape or Macro .

settings

White Balance	Press •◂◃• left/right to select Automatic , Fluorescent , Tungsten , Daylight , or Cloudy .
Flash	Press •◂◃• left/right to select Auto , On , Off or Red Eye .
Tag	Select a predefined text tag to apply to the photos you take. (To create a tag, press Options > Camera Settings > Tag > Create New Tag .)

When the viewfinder is active, press **Options** to select camera options:

options	
Go To MyMedia	View, edit, and delete stored pictures and photos.
Video Mode	Switch to the video camera.
Panorama	Take panoramic photos, see page 44.

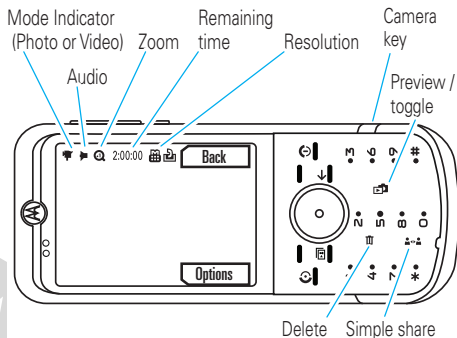
options	
Auto-Timer	Set a timer for the camera to take a photo.
Multi-Shot	Set the camera to take multiple photos in sequence.
Camera Settings	Customize camera settings.

videos

record a video


Your phone's display acts as the video camera viewfinder.



Find it:  >  Fun & Apps > Video Camera





Tip: To record a video, make sure the lens cover is open.

Note: It is assumed **Auto-Save** is turned off. To turn **Auto-Save** on see page 43.


- 1 To begin video recording, press .
- 2 Press s to pause/resume video recording.

- To stop the video, press .
- To send the video in a message, press **Send**. 
- To discard the video, press **←**.
- To select other video options, press **Options**. You can choose to save, discard, send (in a message, email, or via Bluetooth), or preview.

3 Press video mode keys:

-  - to toggle between captured videos, viewfinder and play video.
-  - to delete video.

Tip: Press the volume/zoom keys on the side of your phone to zoom in and out.

Note: To send your video in an MMS text message, the video length must be set to **MMS Short** or **MMS Long**. To set length, press  >  **Fun & Apps** > **Video Camera**,



press **Options** > **Camera Settings**, press **Select** > **Video Settings** > **Video Length**.




When the video camera viewfinder is active, press **Options** to set video recording options:

options	
Go To MyMedia	View, manage, and delete stored videos.
Picture Mode	Switch to the photo camera.
Audio On/Off	Turn audio recording on/off.
Camera Settings	Customize camera settings.

upload video to a blog

Upload a video you've recorded to your video blog site:

- 1 Launch your phone's browser, press  >  **t-zones**.
- 2 Go to a video blogging service Web site.


- 3 Log in to your account.
- 4 Scroll to **Upload Videos** and press .
- 5 Follow the browser prompts to scroll to the video you want to upload, then press .
- 6 Scroll to **Upload** and press .

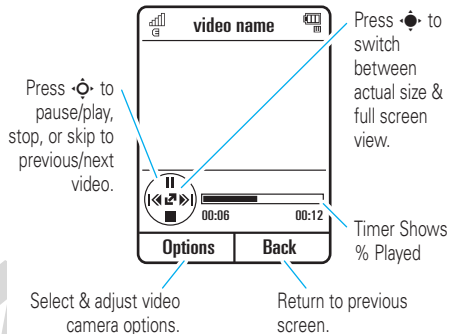
Your phone uploads the video to the blog.

play a video

Your phone can play the following types of video files:
MPEG4 + AAC, H.263 + AAC, and Real Video + Audio.


Find it:  >  **Multimedia** > **Videos** > **All Videos**

Press  to start the video.



When a video is playing, press **Options** to select video options.

Note: Your phone's options may vary. Most options apply only to videos you record, and are not available for pre-installed videos.

options	
Slideshow	Show the video in full screen landscape (Press  to return to 100%).
Manage	Show video Properties , such as file name, type, and size.
Delete	Delete the video.
Zoom	Show the video 100%, or scale the video to fit the viewing area.
Send to	Send the video in a message or email, or send it to your memory card or another device over a Bluetooth connection.
Use Bluetooth/ Use Handset	Switch audio between a Bluetooth headset and the handset speaker.
Setup	Adjust video settings.

music

To listen to music on your phone, you need to:

- 1 Load music on your computer.
- 2 Transfer music from the computer to your phone.
- 3 Use the music player to play and manage music files on your phone.

1. load music on your computer

To create a music library on your computer, you can purchase Microsoft™ Windows™ Media DRM-protected music files from supported on-line music stores (such as Urge, Yahoo, and Napster).

You can also **load song files from a music CD** onto your computer:

- 1 Insert the music CD in your computer's CD drive.
- 2 Launch Windows Media Player 11.

- 3 Copy the music CD to the media player library (also called *ripping* the CD).

If your computer is connected to the Internet, the media player may retrieve CD information such as song titles, album name, artist name, and album artwork. This information will display in your phone's music player.

To minimize song file size, or convert iTunes song files to a format compatible with Microsoft™ Windows™ Player 11, see page 53.

2. transfer music to your phone

Use Windows Media Player 11 to transfer music from the computer to your phone. (If necessary, you can download Windows Media Player 11 at www.microsoft.com/windowsmedia).

Windows Media Player 11 requires Windows XP™ or later to run. If you are using an earlier version of

Windows OS, see page 54 to manually transfer music to your phone.

Windows Media Player 11 can copy and sync music files only to the memory card in your phone. To copy files to phone memory, (see page 54) to manually transfer music to your phone.

Note: Windows Media Player 11 can only be used to copy music files to your phone. You can't use Windows Media Player 11 to copy pictures or videos to the phone.

on your phone

Insert a memory card in your phone (see page 12), then press  >  **Settings** > **Connections** > **USB Setting** > **Media Synchronization**

Attach the Motorola Original USB cable to the micro-USB port on your phone and to an available USB port on your computer. A Motorola Original USB cable and



supporting software may be included with your phone. These tools are also sold separately.

Note: Some phone functions are temporarily unavailable when a USB connection is active.

on your computer

Run Windows Media Player 11. Your phone appears in the upper right corner of the Windows Media Player 11 screen, and the music files stored on the phone's memory card are listed on the left side of the screen.

- 1 Select the Sync tab in Windows Media Player 11.
- 2 Drag and drop songs or playlists onto the Sync List on the right side of the Windows Media Player 11 screen.
- 3 Click Start Sync to copy the songs onto the phone's memory card.
- 4 When you finish, disconnect your phone from the computer.

3. play music

Find it:  >  Multimedia > Music

Select a song or playlist from the following categories:

Recently Played, **Shuffle Songs** (play songs in random order), **All Songs**, **Playlists**, **Artists**, **Albums**, **Genres**, or **Composers**.

Note: If you receive a call during a song, the song pauses until the call is over.

music player

Note: The unauthorized copying of copyrighted materials is contrary to the provisions of the Copyright Laws of the United States and other countries. This device is intended solely for copying non-copyrighted materials, materials in which you own the copyright, or materials which you are authorized or legally permitted to copy. If you are uncertain about your right to copy any material, please contact your legal advisor.

set the default song format and bit rate on your computer

Microsoft™ Windows™ Media Player 11 lets you adjust format and bit rate settings to optimize sound quality or increase the number of song files you can store on your phone.

Windows Media Audio format offers the optimal balance between file size and sound quality. Song files in this format tend to require more storage space than files that use Windows Media Audio Pro format.

Windows Media Audio Pro format is designed for use in portable devices with limited storage capacity. The format provides improved sound quality at lower bit rates.

To set the default file format and bit rate:

- 1 Insert the music CD in your computer's CD drive.
- 2 Launch Windows Media Player 11.
- 3 Select the Rip tab in Windows Media Player 11.
- 4 Click the Rip tab down arrow, then choose Format > Windows Media Audio or Windows Media Audio Pro.
- 5 Click the Rip tab down arrow again, then choose Bit Rate > *bit rate*.

convert iTunes AAC files to MP3 files on your computer

Use the iTunes desktop application to convert standard iTunes AAC files to MP3 files that are compatible with Windows Media Player 11.

Note: The iTunes desktop application can only convert AAC files ripped from a music CD. It can't convert music files purchased from the iTunes store.

- 1 Open the iTunes desktop application on your computer.

- 2 Select Edit > Preferences, then click the Advanced tab and click Importing.
- 3 Open the Import Using pop-up menu, then select the MP3 Encoder option. Click OK to save your settings.
- 4 Select one or more songs in your iTunes music library, then choose Advanced > Convert Selection to MP3.

The converted MP3 file copies appear in your computer's music library alongside the original AAC files.

manually transfer music to your phone or memory card

Without using Windows Media Player 11, you can manually copy or sync music files from the computer to phone memory, or to an optional microSD memory card in the phone. To insert a memory card, see page 12.

supported audio formats

Before you copy audio files to your phone, make sure the files are in a format the phone recognizes: AMR-NB, AMR-WB, AAC (MPEG4 AAC-LC), AAC+, Enhanced AAC+, MP3, 8-bit Linear PCM, 16-bit Linear PCM, 8-bit A-law PCM, 8-bit mu-law PCM, WMA v9 L2 (also WMA v3, v7, v8), Real Audio LBR (Cook), Real Audio Sipro (ACELP®.net), Real Audio 10 and Windows Media Audio Pro.

on your phone

Press  >  **Settings** > **Connections** > **USB Setting** > **Memory Card**

Attach the Motorola Original USB cable to the micro-USB port on your phone and to an available USB port on your computer. A Motorola Original USB cable and supporting software may be included with your phone. These tools are also sold separately.



on your computer


Your phone and memory card appear as removable disks on your computer.

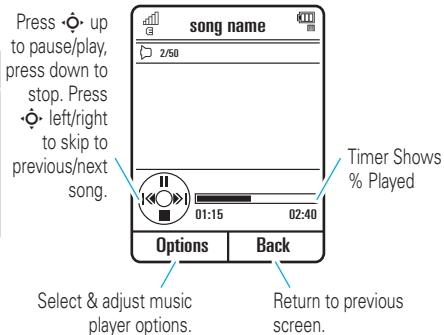
- 1 Find where your phone and memory card appear as Removable Disk icons. On a Windows PC, this is the My Computer window. On a Macintosh® computer, it's on the desktop.
- 2 Double-click the Removable Disk icon for your phone or memory card.
- 3 To copy the desired files onto the phone or memory card, drag and drop them onto the appropriate removable disk icon.
- 4 When you finish, remove the phone safely from your computer:
 - **If you are using a PC**, click the Safely Remove Hardware icon in the system tray at the bottom of your computer screen, then

select Safely Remove USB Mass Storage Device.


- **If you are using a Mac**, select and drag the Removable Disk icon to the Trash.

play music

Use the navigation key  to control song playback.





When a song is playing, press **Options** to select music player options:

options	
Hide	Hide the music player while music plays. To see the music player again, go to the home screen, then press  up.
Manage	Show song Properties , such as file name, type, and size.
Delete	Delete the song file.
Send to	Send the song in a message or email, or send it to Memory Card or another device over a Bluetooth® connection.
Apply to	Add the song to a playlist or make it a ringtone.

options

Use Bluetooth/ Use Handset	To send the audio to a Bluetooth headset, turn on Bluetooth power, then select Use Bluetooth to connect to a recognized Bluetooth headset or search for a new headset. When a Bluetooth audio connection is active, select Use Handset to drop the Bluetooth connection and switch the audio back to the phone. Note: This option appears only when Bluetooth power is turned on.
Setup	Customize settings.

During a song, the music player shows the song title, artist, album, and artwork, if available. To see a larger image of the **artwork**, press  (press  again to return to the music player).

play a playlist

Find it:  >  **Multimedia** > **Music** > **Playlists**, scroll to the playlist, press **Options** > **Play**

create a playlist

create a playlist on your computer




Use Windows Media Player 11 (or your computer's media player program) to create a playlist of music files stored on the computer.

On your phone, press  >  **Settings** > **Connections** > **USB Setting** > **Memory Card**.

Connect your phone to the computer through a USB cable connection, then drag and drop the playlist onto the phone or memory card.

create a playlist on your phone

Find it:  >  **Multimedia** > **Music** > **Playlists** > **Create New Playlist**

- 1 Enter a name for the playlist.
- 2 Select a storage location for the playlist (**Memory Card** or **Phone Memory**), then press **Save**.
- 3 Scroll to the playlist, and press  to select it.
- 4 Scroll to **Add Songs**, and press the center key  to select it.
- 5 Your phone shows the Music Library List. Select **All Songs** and then scroll to the songs you want to add, and press  to select them.
- 6 Press **Add** to add the selected songs to the playlist.
- 7 Repeat the procedure to add more songs, or press **Back** to return to the **Playlists** menu.

adjust audio settings

You can adjust audio settings to optimize the sound quality when listening to music through the phone speaker, stereo headphones, or headset.

To change **playback volume**, press the volume keys on the side of your phone.

To change the **equalizer setting**, press **Options > Setup > Equalizer > music type**.

To set **stereo separation**, press **Options > Setup > Spatial Audio > separation level**.

To set **bass boost**, press **Options > Setup > Bass Boost > bass level**.

use Bluetooth® stereo headphones

Connect your phone with optional Bluetooth stereo headphones to listen to music stored on your phone.



To connect your phone to a set of Bluetooth stereo headphones for the first time, make sure the headphones are **on** and **ready** in *pairing* or *bonding* mode (see the device user's guide).

Find it: > **Settings > Connections > Bluetooth**, press **Options > Search For Device > Headset**

Your phone lists the Bluetooth audio devices it finds within range.


- 1 Scroll to the stereo headphones in the list.
- 2 Press to connect with the stereo headphones.

customize the music player

Find it: > **Multimedia > Music** press **Options > Setup**


You can select the following options:

options	
Shuffle	Play songs in a random order.
Equalizer	Set equalizer to a music style, such as Classical .
Auto- Repeat	Replay the song or playlist when the last file finishes playing.

options	
Spatial Audio	Set to customize sound.
Bass Boost	Set to customize sound.
Internet Connection	Set your Internet connection preferences. 

When you scroll to a song in a list and press **Options**, you may see additional options for the song and list, such as **Delete**, **Send to**, and **Apply to**.

close the music player

From the music player screen or home screen, press  to close the music player.

FM radio

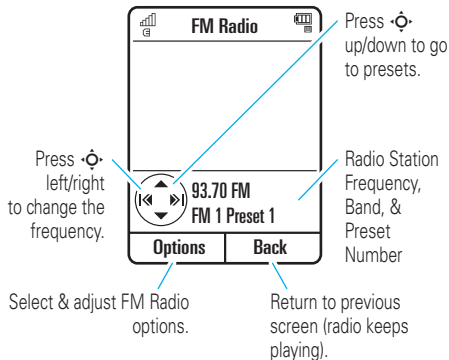
You can use your phone to listen to FM radio stations. You can listen to the radio through the Motorola Original stereo



headset included with your phone, or through the phone's handsfree speaker.

Note: You must plug a wired headset into the headset jack on your phone to use the radio. The headset acts as a radio antenna to receive radio signals. You can't listen to the radio over a Bluetooth® wireless headset.


Find it:  >  Fun & Apps > FM Radio



To **adjust radio volume**: Press the volume keys on the side of your phone.





To **store a preset** station: Press and hold a number key (**1** through **9**) to assign the number to the current tuned station. You can store nine presets in each of three separate FM bands (see the following section for details).

To **select a stored preset** station: Press the number key to select the preset station.

Note: If you receive a call while listening to the radio, press **Answer**. Press  to end the call and return to the radio.

FM radio options

From the FM radio screen, press **Options** to select radio options:

options	
Hide	Hide the radio. To return to the radio display, press  >  Fun & Apps > FM Radio or from the home screen press  .
Mute/Unmute	Mute or unmute the radio. Shortcut: Press  to mute and unmute the radio in the radio screen.
Switch to Speaker/ Switch to Headset	Switch sound to your phone speaker, or to the attached headset.

options	
Switch Bands	Switch between bands FM 1 , FM 2 , and FM 3 . Each band can store nine presets (select presets by pressing number keys 1 - 9). Shortcut: Press # to switch bands in the radio screen.
Scan	Briefly hear each station your phone can receive. Press ⬇️ to stop the scan.
Scan Presets	Briefly hear each stored preset station. Press ⬇️ to stop the scan.
Presets List	See the list of preset stations.

close the FM radio

From the FM radio screen or home screen, press **⏏** to close the radio.

browser

Use your phone's full HTML browser to surf to your favorite Web sites, upload videos to a video blog, and download files and applications to your phone. Log on to your Internet-based email account to check your email on the go.

To **launch** the browser:

Find it: **⬇️** > **T** t-zones

Press **⬆️** up/down/left/right to scroll through Web pages. Scroll to a link and press **⬆️** to select it. Press **Back** at any time to return to the previous screen.

Some Web pages may contain a text entry window for exchanging information with a Web site. Scroll to the window, select it, and enter text as usual (for more information about text entry, see page 21).

To **go to a Web page**, press **Options** > **Go to Page**, enter the Web address, then press **Go**.

To **bookmark** the current Web page, press **Options** > **Active Page** > **Add Bookmark**.

To go to a **bookmarked Web page**, press **Options** > **My Bookmarks** > *bookmark*.

To **change the home page** that appears when you launch the browser, go to the Web page you want to use, then press **Options** > **Active Page** > **Use as Homepage**.

To **upload** a video to a video blog site, see page 48.

To **download** a media file, theme, or Java™ game or application to your phone, go to the page that links to the file, scroll to the link, and select it.

To **exit** the browser, press **Options** > **Exit**.

browser settings

To use your phone's browser, the browser must be configured with the appropriate settings for Internet access, and you must have data service activated for

your account with your service provider (additional fees may apply for this service).

If necessary, you can get the required Internet browsing settings for your phone by contacting your service provider directly, or by visiting the following Web site:

<https://hellomoto.wdsglobal.com/site/phonefirst>

Note: Not all service provider settings may be available yet through this Web site.

messages

text messaging

send a message

A message can contain text and pictures, sounds, or other media objects. You can add multiple pages to a message and put text and media objects on each page. You can send a message to other compatible phones or to email addresses.





Find it:  >  Messages > Create Message

- 1 Press keypad keys to enter text on the page (for more information about text entry, see page 21).

To insert a **picture, sound, or other media object** on the page, press **Options > Insert**. Select the file type and the file. (**Note:** File size restrictions may apply to pictures and videos sent in a message.)


To insert **another page**, press **Options > Insert > Page**. You can enter more text and objects on the new page.

- 2 When you finish the message, press **Options > Sending Options** to set message options (such as **Subject** and **Priority**).
- 3 When you finish setting message options, press **Done**.
- 4 Press **Send To** to select message recipients. You can:
 - Select one or more entries from your contact list (press  to scroll to an entry, and press  to select it).
 - Enter a new number or email address (press **Options > Enter Number** or **Enter Email**).
- 5 Press **Send** to send the message.

Your phone might tell you that this is a multimedia message, if it contains multiple pages or media objects. Some phones or networks don't support multimedia messages. Press **Yes** to send the message.

To save or cancel the message, press **Options** > **Save to Drafts** or **Cancel Message**.

receive a message


When you receive a message, your phone plays an alert, and the internal display shows **New Message** with the new message indicator .

To **read** the message, press **View**. If the message contains media objects:

- Pictures and animations show as you read the message.
- Sound files play as you read the message. Press the external volume keys on the side of your phone to change the sound volume.

- Attached files are added to the end of the message. To open an attachment, select the file indicator or file name.

To **answer** the message, press **Options** > **Reply**.

When you have unread notifications, the  indicator appears. Press **Shortcuts** > **View Notifications** to read and then press **Clear** to delete.

more message & email features

features

confirm a message was sent

To confirm that your message was sent:

 >  **Messages** > **Outbox** > *message*

Your phone lists the message recipient(s) and shows message status. **Sent** indicates the message was sent successfully, **Failed** indicates the message was not sent.

features

send a prewritten quick note



• > Messages > Templates > Text Templates
> *quick note*, press **Options** > **Send**

To create a new quick note:

• > Messages > Templates > Text Templates,
press **Options** > **Create Template**

use a multimedia template



Open a multimedia template with
pre-installed media:

• > Messages > Templates > MMS Templates

read new message or email







When your display shows **New Message**,
press **Read**.

features

read old messages



• > Messages > **Inbox**

Icons next to each message show if it is **read** ,
unread , **urgent** , or has an **attachment** .

Press **Options** to perform various operations on a
message.

store message objects



Go to a multimedia message page, then
press **Options** > **Store**.

create folder



Create a personal folder to store your
messages.

• > Messages > **Folders**, press **Options** > **Create Folder**

features

browser messages



Read messages received by your browser:

When your display shows **New Message**, press **View**.

To activate browser messages and adjust browser message settings:

 >  **Messages**, press **Options** > **Settings**
> **Browser Messages**

info services



Read subscription-based information services messages:

When your display shows **New Message**, press **View**.

To activate information services and adjust info services settings:

 >  **Messages**, press **Options** > **Settings** > **Info Services**

email

Check your personal Web-based **email** account (such as Hotmail, Gmail, or Yahoo).



Note: You must have browser service activated on your phone to use this feature.

Find it:  >  **IM & Email** > **Email**

- 1 Enter your email address and password.
- 2 Press **Log In**.

connections

synchronize with Mobile Backup

Mobile Backup is a **free** service that lets you store and manage contact information on your phone and on the Web at my.t-mobile.com. With Mobile Backup, you don't have to worry about losing contact information if you lose your phone. When you add or edit a **Phone Book** contact, the phone automatically syncs your phone contact list and Web-based contact list.



activate Mobile Backup

If you have not used Mobile Backup before, when you open the **Phone Book**, the phone asks if you want to store a copy of your contacts on my.t-mobile.com. Press **Yes** to activate Mobile Backup and copy your contact list to my.t-mobile.com.

To manually activate Mobile Backup and copy your contact list to my.t-mobile.com:

Find it:  >  Fun & Apps > Organizer > Synchronization > T-Mobile Sync

file manager

Manage music and sound files, photos, videos, and other files stored on your phone, and on an optional removable microSD memory card.

Find it:  >  Fun & Apps > Organizer > File Manager

Select a folder or **Memory Card** to see its contents.

To **play** a sound file or voice note, or **view** a photo or video, just scroll to the file and select it.


To **edit** a file: Scroll to the file and press **Options > Manage** to copy, move, or rename it. Other options let you delete, send, or apply the file. You can't perform some operations on some copyrighted or pre-installed files.

To **copy files** between your phone and a computer, you can use a cable connection (see following section) or a Bluetooth® connection (see page 72).

format memory card

To **format** the memory card or see memory card **properties** (such as name and available memory):

Find it:  >  Fun & Apps > Organizer > File Manager

- 1 Press  to scroll to the memory card.
- 2 Press **Options > Memory Card > Format** or **Properties**.

move or copy files between the phone and memory card

Caution: When you **move** a file to a new location, the file is **deleted** from its original location.

Find it:  >  Fun & Apps > Organizer > File Manager

- 1 Scroll to the file you want to move or copy.
- 2 Press **Options > Manage > Move** or **Copy**.

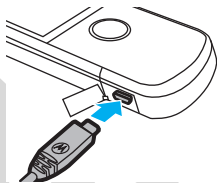
Note: The **Move** and **Copy** options do not appear if the file is copyright-protected.

- 3 Scroll to the destination location, then press **Place**.

cable connections



To transfer data between your phone and a computer, insert the micro-USB port connector plug from a USB cable into your phone's micro-USB port. Connect the other end of the cable to the computer.





Note: A Motorola Original USB cable and supporting software may be included with your phone. These tools are also sold separately. Check your computer to determine the type of cable you need.







Note: Some phone functions are temporarily unavailable when a USB connection is active.


To **transfer pictures** between your phone and computer: Press  >  **Settings** > **Connections** > **USB Setting**


> **Kodak EasyShare**, then connect your phone to your computer. The KODAK Digital Camera screen displays, select **Kodak EasyShare software** and press **Ok**.



To use Windows Media Player 11 to **sync music files** from a computer to a memory card installed in your phone: Press  >  **Settings** > **Connections** > **USB Setting** > **Media Synchronization**, then connect your phone to the computer. For more information, see page 67.



To manually **transfer music, pictures, and videos** between your computer and phone (phone memory or installed memory card): Press  >  **Settings** > **Connections** > **USB Setting** > **Memory Card**, then connect your phone to the computer. For more information about manually transferring music files, see page 54.

To use your phone as a **modem**: Press  >  **Settings** > **Connections** > **USB Setting** > **Modem**, then connect your phone to the computer.

To **transfer contact lists and calendar entries** between your computer and phone: Press 

>  **Settings** > **Connections** > **USB Setting** > **Modem**, then connect your phone to the computer. Run the optional Motorola Phone Tools accessory application on the computer. You can also use the Motorola Phone Tools application to transfer and sync music files from the computer to your phone. See the Phone Tools user's guide for more information.

To make **data calls** through a computer: Press  >  **Settings** > **Connections** > **USB Setting** > **Modem**, then connect your phone to the computer. Use the computer application to place or answer the call.

To **print** an image over a USB PictBridge connection: Press  >  **Settings** > **Connections** > **USB Setting** > **USB Printing**, then connect your phone to a PictBridge-compatible printer. Select the image(s) you want to print, then press **Options** > **Print via** > **USB**.

end a USB connection

Caution: Do not disconnect your phone from the computer while files are being transferred.

On a PC running Windows XP™ or later: When file transfer is complete, remove the USB cable from your phone and computer.

On a PC running an earlier version of Windows OS: Click the Safely Remove Hardware icon in the system tray at the bottom of your computer screen, then select Safely Remove USB Mass Storage Device. Remove the USB cable from your phone and computer.

On a Macintosh® computer: Select and drag the Removable Disk icon to the Trash. Remove the USB cable from your phone and computer.

Bluetooth® wireless

Your phone supports Bluetooth wireless connections. You can connect your phone with



an optional Bluetooth headset or Bluetooth car kit to make handsfree calls, or with a set of Bluetooth stereo headphones to listen to music stored on your phone. Connect your phone with a device that supports Bluetooth connections to exchange files, connect with a printer that supports Bluetooth connections to print images, or use your phone as a Bluetooth wireless modem to connect to the Internet.

For maximum Bluetooth security, you should always connect Bluetooth devices in a safe, private environment.

turn Bluetooth power on & off

Your phone automatically turns Bluetooth power on when you use a Bluetooth feature.

To turn Bluetooth power on or off at any time:

Find it:  >  Settings > Connections > Bluetooth, press **Options** > **Setup Bluetooth** > **Bluetooth Power** > **On**


Note: To extend battery life and maximize Bluetooth security, use this procedure to set Bluetooth power to **Off** when not in use. Your phone will not connect to another device until you use a Bluetooth feature again, or set Bluetooth power back to **On**.

use a Bluetooth headset or handsfree car kit

Before you try to connect your phone to a handsfree device for the first time, make sure the device is **on** and **ready** in *pairing* or *bonding* mode (see the device user's guide). You can connect your phone with only one device at a time.

Find it:  >  Settings > Connections > Bluetooth, press **Options** > **Search For Device** > **Headset**

Your phone lists the Bluetooth audio devices it finds within range.

- 1 Scroll to a device in the list.
- 2 Press  to connect with the highlighted device.

copy files to another device

You can copy a media file, contact, calendar event, or bookmark to another phone or computer that supports Bluetooth connections.

Note: You can't copy some copyrighted objects.

Before you try to copy a file to another device, make sure the receiving device is **on** and **ready** in discoverable mode. Also, make sure the device is not busy with another Bluetooth connection.

- 1 On your phone, scroll to the object that you want to copy to the other device.
- 2 Press **Options**, then select:
 - **Send To** > **Bluetooth** for an image or sound file.
 - **Share** > *contact* > **Bluetooth** for a contact.
 - **Share Via** > **Bluetooth** for a calendar event or bookmark.
- 3 Select a recognized device name.

or

Select [**Search For Devices**] to search for new devices, then select the device where you want to copy the object.



- 4 Press **Options** > **Send**.
- 5 If necessary, enter a mutually agreed upon passkey (such as **0000**) on your phone and the device, then press **OK** to connect to the device.

Your phone shows **Sending** while the file is transferred. When file transfer is complete, the phone shows **Send Successful**, and prompts you to press **OK** to continue.

receive files from another device

Before you try to receive a file from another device, make sure your phone's Bluetooth power is **on** (see page 71).

Place your phone within range (approximately 10 meters/30 feet) of the other Bluetooth device, and send the file from the device.

If your phone and the sending device were not previously paired, place your phone in discoverable mode so the sending device can locate it. Press  > **Settings** > **Connections** > **Bluetooth**, press **Options** > **Discoverable On 3 Minutes**. The Bluetooth indicator  in the home screen flashes when your phone is in discoverable mode.

Your phone notifies you when file transfer is complete and saves the file.

send a photo to a printer

You can send a photo to a printer that supports Bluetooth connections.









Note: You can print A4, US Letter, and 4x6 size pages.




To print another size, copy the image to a linked computer and print it from there.

- 1 On your phone, take a new photo or scroll to a stored image that you want to print, then press **Options** > **Print via** > **Bluetooth**.
Note: If you see **Service Not Supported** when you try to print, select **Send To** > **Bluetooth** instead. (The **Send To** option does not print the image name or date stamp.)
- 2 Select a recognized printer name, or press **Options** > **Search For Printers** to search for another printer where you want to send the image.
- 3 If available, modify print options.

more Bluetooth features

Note: A device is *recognized* after you connect to it once (see page 71).

features	
pair with recognized device	
Press  >  Settings > Connections > Bluetooth, press  left to select the My Devices tab, press  up/down to scroll to the device name, press  to connect.	
drop connection with device	
Scroll to the connected device name and press  to disconnect.	

features	
remove device from device list	
Scroll to the device name and press Options > Manage > Remove Device.	
Note: You can't remove a device from the list while your phone is connected to the device.	
switch audio to Bluetooth headset or Bluetooth car kit during call	
Press Options > Use Bluetooth.	
To switch audio back to the phone, press Options > Use Handset.	
edit properties of recognized device	
Scroll to the device name, press Options > Manage > Edit Device.	

features

set Bluetooth options



Press  >  Settings > Connections > Bluetooth,
press **Options** > **Setup Bluetooth**.

Wi-Fi

Note: Your phone's Wi-Fi features are not allowed for outdoor operation in France. To avoid unlawful interference with radio signals, do not use the Wi-Fi features in France unless you are indoors.

Your phone can connect to Wi-Fi networks when you are at home, in the office or at a hotspot. To use Wi-Fi, it must be available at your location and you need to connect to it. Connect your phone with Wi-Fi to exchange files, connect with a printer that supports Wi-Fi to print images, or use your phone to connect to the Internet.



Note: Wi-Fi is the preferred method of connecting to the KODAK Gallery Link to send photos (see page 45).


turn Wi-Fi on

To turn on your phone's Wi-Fi feature, press  >  Settings > Wi-Fi > Set Up Wi-Fi > Wi-Fi Power > On.

Note: To extend battery life set **Wi-Fi Power** to **Off** when not in use.

Wi-Fi search

Find it:  >  Settings > Wi-Fi > Available Networks

- 1 Scroll to a network in the list and press  or **Options** > **Connect**.
- 2 Enter the **Passphrase** and press **Continue**. The passphrase is provided by the home, office, or hotspot network administrator and is unique.
- 3 Add to saved networks, press **Yes** or **No**.

Note: Make sure the Wi-Fi network you connect to is secure.

Wi-Fi options

To view saved Wi-Fi networks  >  **Settings** > **Wi-Fi** > **Saved Networks**.

To connect to a Wi-Fi network that you have used before press  >  **Settings** > **Wi-Fi** > **Quick Connect**.

To view the details of a Wi-Fi connection press  >  **Settings** > **Wi-Fi** > **Current Connection**.

TV Out

Your phone has a 3.5mm TV Out port so you can connect it to a TV and see your phone's display on the TV. Watch your favorite video or show your friends that slideshow you put together.




Note: Motorola Original TV Out cables may be sold separately. Check your TV to determine the type of cable you need.



turn TV Out on

To turn on your phone's TV Out feature by press  >  **Settings** > **Connections** > **TV Out** > **On** > **Select**.

Select an option:

options	
Picture slideshow	Photos are displayed on TV.
Video slideshow	Video is displayed on TV in landscape format.
Browse Media	 Multimedia is displayed on TV.

Press **Cancel** to see your phone's display on the TV.

phone updates

Sometimes, we think of ways to make your phone's software faster or more efficient after you've purchased your phone. You can find out if your phone can be updated at: www.hellomoto.com/update

Note: Software updates do not affect your contact list or other personal entries or files. If you receive a software update but choose to install it later, see page 87.

other features

advanced calling

features

speed dial

Your phone can store nine phone numbers that you can call with a single keypress. To **store** a speed dial phone number:

☎ > 📖 Phonebook, press **Options** > **Setup** > **Speed Dial List**
> *speed dial location*

To **call** a speed dial number, press and hold the single-digit speed dial number for one second.

features

international calls



If your phone service includes international dialing, press and hold **0** to insert your local international access code (indicated by +). Then, press number keys to dial the country code and phone number.

hold a call

Press **Options** > **Hold** to put all active calls on hold.


mute a call

Press **Options** > **Mute** to put all active calls on mute.

features

call waiting



When you're on a call, you'll hear an alert if you receive a second call. Press  to answer the new call.

- To switch between calls, press **Switch**.
- To connect the two calls, press **Link**.
- To end the call on hold, press **Options > End Call On Hold**.

To turn call waiting on or off:

 >  **Settings > Call Settings > In-Call Setup > Call Waiting > On or Off**

new call



During a call:

Options > New Call, press **Options > Browse Contacts**

features

conference call



During a call:

Dial next number, press , press **Options > Link Calls**

transfer a call



During a call:

Options > Transfer, dial transfer number, press 

call forwarding





Set up or cancel call forwarding:

 >  **Settings > Call Settings > Call Forward**

call barring



Restrict outgoing or incoming calls:

 >  **Settings > Security > Barred Services**

features

change phone line



If you have a dual-line-enabled SIM card, you can change your line to make and receive calls from your other phone number:

 >  **Settings** > **Call Settings** > **In-Call Setup** > **Active Line**

The active line indicator shows the active phone line (see illustration on page 20).

features

fixed dial



When you turn on fixed dialing, you can call only numbers stored in the fixed dial list.

Note: You must enter your SIM PIN2 code to turn fixed dialing on or off. If you forget your PIN2 code, contact your service provider.

Turn fixed dialing on or off:

 >  **Settings** > **Call Settings** > **Fixed Dialing** > **On or Off**

Use the fixed dial list:

 >  **Fun & Apps** > **Organizer** > **Dialing Services** > **Fixed Dial**

DTMF tones

Activate DTMF tones:

 >  **Settings** > **Call Settings** > **Dialing Setup** > **DTMF**

Send DTMF tones during a call:

Press number keys

phonebook

features

add new contact

•◂ > Phonebook, press Options > Create Contact

Press ◂◃ left/right to select the **details** tab **H**, **address** tab **📁**, **ID** tab **🔒**, or **notes** tab **📝**. Press ◂◃ up/down to scroll to information you want to change, then press •◂ to select it.

Note: The tab options are only available for contacts stored on your phone and not on your SIM card.

call contact

•◂ > Phonebook, scroll to the contact, press **📞** to call

Note: If a contact has multiple phone numbers or email addresses, press ◂◃ left/right to select the number or email address you want.

features

send message to contact

•◂ > Phonebook, scroll to the contact, press Options > Send Message

add additional phone number or email address to contact

•◂ > Phonebook, scroll to the contact, press Options > Edit, press ◂◃ left/right to select the **details** tab **H**, press ◂◃ up/down to scroll to an empty **Number** or **Email** field, press •◂ to select it

set picture ID for contact

Assign a photo or picture to show in the display when you receive a call from a contact:

•◂ > Phonebook, scroll to the contact, press Options > Edit, press ◂◃ left/right to select the **ID** tab **🔒**, press ◂◃ up/down to scroll to **Picture ID**, press •◂ to select it

features

set ring ID for contact

Assign a distinctive call alert (*ring ID*) for a contact:

•◂ > Phonebook, scroll to the contact, press **Options** > **Edit**, press ◂◃ left/right to select the **ID** tab ⓘ, press ◂◃ up/down to scroll to **Ring ID**, press ◂◃ to select it

assign contact to category

•◂ > Phonebook, scroll to the contact, press **Options** > **Edit**, press ◂◃ left/right to select the **details** tab ⓘ, press ◂◃ up/down to scroll to **Category**, press ◂◃ to select it

set category view

•◂ > Phonebook, press **Options** > **Filter By**

You can show contacts in a predefined category (**All Contacts**, **Email**, **Family**, **Friends**, **Work**), or contacts in a category that you create (select **Create Category**).

features

create group mailing list

Assign contacts to a group message list or email list:

•◂ > Phonebook, press **Options** > **Create List** > **Message or Email**

show contact photos

Show contacts with picture ID photos, or as a text list:

•◂ > Phonebook, press **Options** > **Setup** > **Default View** > **Thumbnail** or **List**

set contact list sort order

•◂ > Phonebook, press **Options** > **Setup** > **Default Sort Order** > **First Name** or **Last Name**

features

create and use private contacts

Identify one or more contacts as private contacts. You must enter your six-digit security code to access the private contacts on your contact list.

•◉ > ☎ Phonebook, press **Options** > **Setup** > **Private Contacts**

import contacts to phone memory

Import all contacts to phone memory, from the SIM card or from another location:

•◉ > ☎ Phonebook, press **Options** > **Import Contacts**
> **SIM Card** or **File Manager**

features

manage SIM card contacts

•◉ > ☎ Phonebook, press **Options** > **Setup**
> **SIM Card Manager**

Delete contacts stored on your SIM card, or import contact to the SIM card from phone memory, or from another location.

send contact(s) to another device

Send one or more contacts to another phone, computer, or device:

•◉ > ☎ Phonebook, scroll to the contact, press **Options**
> **Share**, press •◉ to select the current contact, press ◉ up/down to scroll to **Bluetooth**, **Messaging**, or **Email** transfer method, press **Select** to select it

To send multiple contacts, press **Options** > **Share**
> **Multiple Contacts** (instead of the current contact).

features

delete contact(s)

Delete one or more contacts from your contact list:

ⓘ > 📞 Phonebook, scroll to the contact, press **Options** > **Delete**, press ⓘ to select the current contact, press **Yes** to confirm deletion

To delete multiple contacts, press **Options** > **Delete** > **Multiple Contacts** (instead of the current contact).

personalize

features

language

Set menu language:

ⓘ > ⚙️ Settings > Phone Settings > Language

features

reminders

Set the reminder alert for event notifications:

ⓘ > ⚙️ Settings > Profiles, press ⓘ left/right to select the **settings** tab ⚙️, > **Remind Me**

reset settings

Reset default settings for all options **except** the unlock code, security code, and lifetime timer:

ⓘ > ⚙️ Settings > Phone Settings > Reset > Reset All Settings

features

delete data

Caution: This option **erases all information you have entered** (including contacts and calendar entries) **and content you have downloaded** (including photos and sounds) stored in your phone's memory. After you erase the information, you can't recover it.

This option does **not** delete SIM card information:

 >  Settings > Phone Settings > Reset > Delete All Data


features

delete memory card information

Caution: This option **erases all information you have entered** (including contacts and calendar entries) **and content you have downloaded** (including photos and sounds) stored On your memory card and/or SIM card. After you erase the information, you can't recover it.










 >  Settings > Phone Settings > Reset
> Delete Memory Cards

call times & costs

Network connection time is the elapsed time from the moment you connect to your service provider's network to the moment you end the call by pressing . This time includes busy signals and ringing.

The amount of network connection time you track on your resettable timer may not equal the amount

of time for which you are billed by your service provider. For billing information, contact your service provider.

features
call times 
See call timers:  >  Call Log, press Options > Call Times
in-call timer 
Show call time information during a call:  >  Settings > Call Settings > In-Call Setup > In-Call Timer
call cost 
See call cost trackers and credit information:  >  Call Log, press Options > Call Costs

features

call cost setup

Set a credit limit:

 >  Call Log, press Options > Call Costs > Call Cost Setup

data times

See data call timers:

 >  Call Log, press Options > Data Times

data volumes









See data volume meters:

 >  Call Log, press Options > Data Volumes









handsfree

Note: The use of wireless phones while driving may cause distraction. Discontinue a call if you can't concentrate on driving. Additionally, the use of wireless devices and their accessories may be prohibited or

restricted in certain areas. Always obey the laws and regulations on the use of these products.

features	
auto answer (headset) 	
Automatically answer calls when connected to a car kit or headset:	
 >  Settings > Phone Settings > Headset Settings > Auto-Answer	
voice dial (headset) 	
Enable voice dial with headset send/end key:	
 >  Settings > Phone Settings > Headset Settings > Voice Dial	

network

features	
network settings 	
See network information and adjust network settings:	
 >  Settings > Network	
software update 	
Your service provider can send updated phone software over-the-air to your phone. When your phone receives a software update, you can install it immediately, or defer installation until later. To install a deferred software update:	
 >  Settings > Phone Settings > OTA Updates > Update Software	

personal organizer

features

set alarm

📍 > 📱 Fun & Apps > Organizer > Alarm Clock

Shortcut: From the home screen, press **Shortcuts** > **Set Alarm**.

turn off alarm

When the display shows an alarm:

To turn off the alarm, press **Dismiss** or 📧.

To set an eight-minute delay, press **Snooze**.

set calendar default view

📍 > 📱 Fun & Apps > Organizer > Calendar, press **Options** > **Calendar Setup** > **Default View**

features

add new calendar event

📍 > 📱 Fun & Apps > Organizer > Calendar, scroll to the day and/or start time, press 📍, enter event details

You can set a music or sound file, voice note, or video as a calendar event reminder. When creating a calendar event, select **Alarm Style** > *alarm type*, scroll to the file (or create a new file), press **Insert**.

see calendar event

📍 > 📱 Fun & Apps > Organizer > Calendar > *event*

To edit event details, press **Options** > **Edit**.

calendar event reminder

When the display shows and sounds an event reminder:

To see reminder details, select **Open Event**.

To close the reminder, press **Dismiss**.

features

send calendar event to another device

Send a calendar event to another phone, computer, or device:

📍 > 📱 Fun & Apps > Organizer > Calendar > *event*,
press Options > Share via > Bluetooth or Message

manage downloaded files

Manage files and applications that you've downloaded onto your phone from the browser or over a Bluetooth® connection:

📍 > ⚙️ Settings > Download Manager

world clock

Show time and date information for multiple cities around the world:

📍 > 📱 Fun & Apps > Organizer > World Clock

features

task list

Create a checklist of tasks you need to perform, and set your phone to notify you when task deadlines arrive:

📍 > 📱 Fun & Apps > Organizer > Task List

notes

Write and store notes on your phone:

📍 > 📱 Fun & Apps > Organizer > Notes

features

record voice note

•◂ >  Fun & Apps > Voice Notes, press •◂ to start recording, press **Stop** to stop recording

To save the voice note, press **Save**.

To perform various operations on the voice note, press **Options**.

Note: Recording of phone calls is subject to varying State and Federal laws regarding privacy and recording of phone conversations. Always obey the laws and regulations on the use of this feature.

play voice note

Play back a voice note you've recorded:


•◂ >  Multimedia > Voice Notes > *voice note*

calculator

•◂ >  Fun & Apps > Organizer > Calculator

features

currency converter

•◂ >  Fun & Apps > Organizer > Calculator, press **Options** > **Set Exchange Rate**, enter exchange rate, press **Set**, enter amount, press **Options** > **Convert Currency**


security

features

SIM PIN

Caution: If you enter an incorrect PIN code three times before the correct code, your SIM card is disabled, and your display shows **SIM Blocked**.

Lock or unlock the SIM card:

•◂ >  Settings > Security > SIM Lock

features

lock application

 >  Settings > Security > Application Lock

manage certificates

Enable or disable Internet access certificates stored on your phone:

 >  Settings > Security > Certificates

Certificates are used to verify the identity and security of Web sites when you download files or share information.



fun & games

features

start a game or application

Start a Java™ game or application:

 >  Fun & Apps > Games & Apps > *game or application*

airplane mode

Turn off your phone's calling features in locations where wireless phone use is prohibited. This lets you use the music player and other non-network features while you are on an airplane, without interfering with airplane communications.

 >  Settings > Phone Settings > Airplane Mode > On

To reactivate your phone's calling features, turn off airplane mode.



service & repairs

If you have questions or need assistance, we're here to help.

Go to www.motorola.com/consumer/support, where you can select from a number of customer care options.

You can also contact the Motorola Customer Support Center at 1-800-331-6456 (United States), 1-888-390-6456 (TTY/TDD United States for hearing impaired), or 1-800-461-4575 (Canada).

Specific Absorption Rate Data

This model wireless phone meets the government's requirements for exposure to radio waves.

Your wireless phone is a radio transmitter and receiver. It is designed and manufactured not to exceed limits for exposure to radio frequency (RF) energy set by the Federal Communications Commission (FCC) of the U.S. Government and by the Canadian regulatory authorities. These limits are part of comprehensive guidelines and establish permitted levels of RF energy for the general population. The guidelines are based on standards that were developed by independent scientific organizations through periodic and thorough evaluation of scientific studies. The standards include a substantial safety margin designed to assure the safety of all persons, regardless of age or health.

The exposure standard for wireless mobile phones employs a unit of measurement known as the Specific Absorption Rate, or SAR. The SAR limit set by the FCC and by the Canadian regulatory authorities is 1.6 W/kg.¹ Tests for SAR are conducted using standard operating positions accepted by the FCC and by Industry Canada with the phone transmitting at its highest certified power level in all tested frequency bands. Although the SAR is determined at the highest certified power level, the actual SAR level of the phone while operating can be well below the maximum value. This is because the phone is designed to operate at multiple power levels so as to use only the power required to reach the network. In general, the closer you are to a wireless base station, the lower the power output.

Before a phone model is available for sale to the public in the U.S. and Canada, it must be tested and certified to the FCC and Industry Canada that it does not exceed the limit established by each government for safe exposure. The tests are performed in positions and locations (e.g., at the ear and worn on the body) reported to the FCC and available for review by Industry Canada. The highest SAR value for this model phone when tested for use at the ear is ___ W/kg, and when worn on the body, as described in this user guide, is ___ W/kg. The SAR value for this product in its data transmission mode (body-worn use) is ___ W/kg. (Body-worn measurements differ among phone models, depending upon available accessories and regulatory requirements).²

While there may be differences between the SAR levels of various phones and at various positions, they all meet the governmental requirements for safe exposure. Please note that improvements to this product model could cause differences in the SAR value for later products; in all cases, products are designed to be within the guidelines.

Additional information on Specific Absorption Rates (SAR) can be found on the Cellular Telecommunications & Internet Association (CTIA) Web site:

<http://www.phonefacts.net>

or the Canadian Wireless Telecommunications Association (CWTA) Web site:

<http://www.cwta.ca>

1. In the United States and Canada, the SAR limit for mobile phones used by the public is 1.6 watts/kg (W/kg) averaged over one gram of tissue. The standard incorporates a substantial margin of safety to give additional protection for the public and to account for any variations in measurements.
2. The SAR information includes the Motorola testing protocol, assessment procedure, and measurement uncertainty range for this product.

DRAFT

European Union Directives Conformance Statement



Hereby, Motorola declares that this product is in compliance with:

- The essential requirements and other relevant provisions of Directive 1999/5/EC
- All other relevant EU Directives

IMEI: 350034/40/394721/9

CE 0168

Type: MC2-41H14

Product
Approval
Number

The above gives an example of a typical Product Approval Number.

You can view your product's Declaration of Conformity (DoC) to Directive 1999/5/EC (to R&TTE Directive) at www.motorola.com/rte. To find your DoC, enter the Product Approval Number from your product's label in the "Search" bar on the Web site.

OPEN SOURCE SOFTWARE INFORMATION

For instructions on how to obtain a copy of any source code being made publicly available by Motorola related to software used in this Motorola mobile device you may send your request in writing to:

MOTOROLA, INC.
OSS Management
600 North US Hwy 45
Libertyville, IL 60048
USA

The Motorola website opensource.motorola.com also contains information regarding Motorola's use of open source.

Motorola has created the opensource.motorola.com to serve as a portal for interaction with the software community-at-large.

To view additional information regarding licenses, acknowledgments and required copyright notices for open source packages used in this Motorola mobile device, please select "Legal Notices" from Phone Settings.

DRAFT

index

- A**
 - abc mode 22
 - accessories 11, 58, 70, 86
 - active line indicator 20
 - active line, change 80
 - airplane mode 91
 - alarm clock 88
 - alert
 - set 27, 29
 - turn off 24, 39
 - alert profile 24, 27
 - alert style profiles 20
 - animated graphics 43
 - answer a call 16, 34
 - audio file formats 54
 - audio player 52
- B**
 - back/clear key 2
 - battery 15
 - battery charge indicator light 2
 - battery indicator 21
 - battery life, extend 12, 33, 71, 75, 76
 - blog 48
 - Bluetooth headset indicator light 2
 - Bluetooth wireless 58, 70
 - bonding. See Bluetooth wireless
 - brightness 33
 - browser 61, 66, 89
 - browser messages 66
- C**
 - cables, using 69
 - calculator 90
 - calendar
 - add event 88
 - send event 89
 - set view 88
 - call
 - answer 16, 34
 - end 16
 - make 16, 17
 - waiting 79
 - call alert 82
 - call barring 26, 79
 - call forward indicator 20
 - call forwarding 79
 - call timers 86
 - caller ID 40, 81
 - camera 47
 - camera key 2

car kit 86
center key 11, 19
certificate management 91
clear/back key 22
clock 34
codes 26
conference call 79
contact list
 add entry 17, 81
 dial entry 17
 filter 82
 picture ID 40
 search 17
 send contact 83
 view 82
costs, track 86

D

data call 86
date 34
delete data 85

delete key 2
delete text 22
dial a phone number 16, 17, 80
dialed calls 39
digital audio 52
display 4, 19, 33
download files 62
download manager 89
download media objects 65
drafts folder 64
DTMF tones 80

E

earpiece volume 24
EDGE indicator 20
email
 create folder 65
 read 65
email address 17, 81
emergency number 41
end a call 16

end key 16
Enter Unlock Code message 26
external display 43

F

feature icons 32
file manager 67
filter contacts 82
fixed dial 80
flip 16
FM radio 59
forward calls 79

G

GPRS indicator 20
group mailing list 82

H

handsfree speaker 25
headset 86
headset jack 2, 59

hearing aid 35
hold a call 78
home screen 4, 19, 32

I

in-call indicator 20
Incoming Call message 40
information services 66
international access code 78

K

keypad volume, adjust 27
KODAK EASYSHARE software 69
kodak gallery link 45

L

language 84
lanyard hook 2
line 1 and line 2 20
linking. See Bluetooth wireless
lock

application 91
phone 26
SIM card 90
lock/unlock key 24
lock/unlock keypad 2
Low Battery message 21

M

make a call 16, 17
media playback 27
media volume, adjust 27
memory card 12, 68
menu 4, 19, 33
menu icons 19, 33
message
 read 64, 65
 send 63
message indicator 20, 64
message reminders 84
micro-USB port 2, 69
Missed Calls message 40

MOTOSYNC 67
MP3 sound files 52
multimedia message 63
multimedia message template 65
music player 52
mute a call 78
myFaves 36

N

navigation key 11
network settings 87
new 28
new call 79
notes 89
numeric entry mode 23

O

optional accessory 11
optional feature 11

P

pairing. See Bluetooth wireless
passwords. See codes
personalize 84
phone number
 store 17, 81
 your number 18, 80
picture ID 40, 81
PIN code 16, 26, 90
PIN2 code 26, 80
playback volume 24
power key 16
predictive text entry 22
preview/toggle key 2
printing 70, 73
profile 28
profile indicator 20
profiles 20, 27

Q

quick note 65

R

received calls 39
recent calls 39
redial 39
reminders 84
reset settings 84
return a call 40
review key 2
right soft key 2
ring ID 82
ringer ID 40
ringer volume, adjust 27
ringtone 27, 29, 37, 56

S

screensaver 29, 33
search 75

security code 26
send key 16
signal strength indicator 20
silent profile 27
SIM Blocked message 90
SIM card 11, 16, 26, 80, 90
SIM card, delete information 85
simple share key 2
soft key 2
soft keys 19
software update 77, 87
speakerphone 86
speed dial 78
stereo headphones 58
store phone numbers 17, 81
store your phone number 18
symbol entry mode 23

T

task list 89
t-coil hearing aid 35

text edit 22
text entry 21
text entry mode 22
text message 63
text messaging 63
text templates 65
theme 29
time 34
timers 86
transfer a call 79
transfer pictures 69
turn on/off 16
TV Out 76
TV Out on 76

U

unlock
 application 91
 phone 16, 26
 SIM card 90
unlock code 26

upload files 62
USB cables 69

V

vibrate profile 27
video 47
video blog 48
video file formats 49
voice commands 24
voice dial 24, 87
voice note 90
voicemail 41
voicemail message indicator 41
volume 24, 27
volume keys 2, 24

W

wallpaper 29, 31
Web pages 61, 66
Wi-Fi 75
Wi-Fi indicator 20

Wi-Fi on 75
Wi-Fi options 76
WLAN 75
word text entry mode 22
world clock 89

Y

your phone number 18

Z

zoom keys 2

U.S. patent Re. 34,976

DRAFT