

Quick Start Guide

How to Install the Bundled Software
How to Use your "WALKMAN"



NWZ-W262/W263

©2011 Sony Corporation Printed in Malaysia

About the manuals

In addition to this Quick Start Guide, this model is accompanied by a User Guide (HTML document) which you can view from the WALKMAN Guide. For details, refer to "How to Install the Bundled Software (User Guide included)."



* 4 2 8 7 5 1 4 1 1 * (1)

Contents

Please check the items in the package.



- USB cable (1)
- Earbuds (Size S, L) (Supplied in pairs)
At purchase, M size earbuds are installed.
- Quick Start Guide (this manual) (1)
- Notes on Water Resistant Specifications (1)
- Software

The software is stored in the built-in flash memory of your "WALKMAN," and it includes the following items:

- Content Transfer
- WALKMAN Guide
- User Guide, etc.

For details on how to install software, refer to "How to Install the Bundled Software (User Guide included)."

About Windows Operating System and Windows Media Player

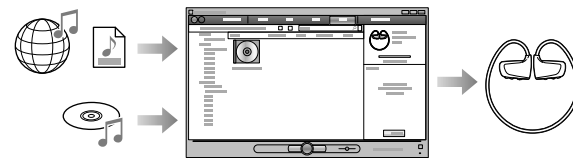
Make sure that the OS is Windows XP (Service Pack 3 or later), Windows Vista*¹ (Service Pack 1 or later) or Windows 7*¹, and that the installed Windows Media Player version on your computer is 11 (Windows XP/Windows Vista) or 12 (Windows 7).

For details about usage or support on Windows Media Player, refer to Windows Media Player information from the following web site:
<http://support.microsoft.com/>

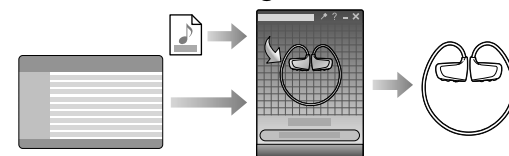
*¹ [Compatibility mode] for Windows XP is not supported.

Three Ways to Transfer Music

From CDs, etc., using Windows Media Player

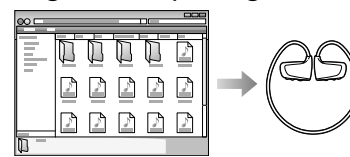


From iTunes*¹, etc., using Content Transfer



*¹ Content Transfer supports data transfer from iTunes 9.0 to your "WALKMAN."

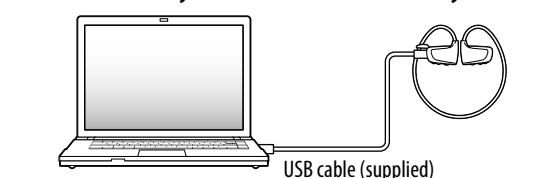
By drag-and-drop using Windows Explorer



For details on transferring music, refer to the User Guide. The User Guide can be readily viewed from the WALKMAN Guide.

How to Install the Bundled Software (User Guide included)

1 Connect your "WALKMAN" to your computer.



2 Select the following with the computer.

Select [start] - [My Computer] or [Computer] - [WALKMAN] - [Storage Media].

3 Double-click [Setup.exe].

The install wizard appears.

- When you execute [Setup.exe], the [Setup.exe] file and [Install] folder stored in the [Storage Media] folder of your "WALKMAN" are copied to your computer for backup, and WALKMAN Guide and Content Transfer are installed to your computer.

4 Follow the on-screen instructions.

After executing [Setup.exe], the WALKMAN Guide shortcut appears on the desktop of your computer.

- With your "WALKMAN" connected to your computer, Content Transfer starts automatically when installation of bundled software is completed.

5 Double-click (WALKMAN Guide) on the desktop to start the WALKMAN Guide.

For details on transferring music, etc., refer to the User Guide included in the WALKMAN Guide.

Hint

- You can start the WALKMAN Guide and Content Transfer from the [start] menu (displayed by clicking [start]).
 - If you delete the [Setup.exe] file in your "WALKMAN" by formatting the built-in flash memory of your "WALKMAN," copy the [Setup.exe] file and the [Install] folder to your "WALKMAN" from the [Backup] folder on the computer. Connect your "WALKMAN" to the computer on which you want to install software, and follow the above procedure from step 1 to install it. After installing the software, delete the [Setup.exe] file and [Install] folder from your "WALKMAN."
- The backup data is preserved in the following location on the [C] drive on your computer by the default install setting.
C:\Program Files\Sony\WALKMAN Guide\NWZ-W260\Backup

What can you do with the WALKMAN Guide ?

The WALKMAN Guide includes the following items:

- User Guide
The following contents can be viewed in your web browser.
 - Details on how to use your "WALKMAN"
 - How to use software to transfer music to your "WALKMAN"
 - Troubleshooting
- Customer Registration Link
- Customer Support Link
- Other useful Links
Includes link information, etc., on the download site.

The bundled items differ depending on the country/region of purchase.

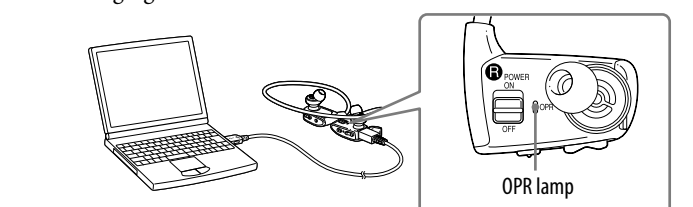
Hint

- After executing [Setup.exe], you can use the free space in the [Storage Media] folder more effectively by formatting the built-in flash memory of your "WALKMAN." To format the built-in flash memory of your "WALKMAN," see "To initialize (format) your "WALKMAN" on the backside.

Charging the Battery

1 Connect your "WALKMAN" to an operating computer using the USB cable (supplied.)

If a screen appears presenting a choice of actions, click "Cancel." Charging starts.



Notes on charging by using the computer

- While charging, the OPR lamp indicates the charging status of your "WALKMAN."
Lights up in red: Being charged
Turns off: Charged fully or not charging
- Charging time is approx. 1.5 hours.
When your "WALKMAN" has been fully charged, disconnect it from the computer.
- If the computer enters a power saving mode such as the Sleep or Hibernation mode while your "WALKMAN" is connected via the USB cable, your "WALKMAN" continues to draw power from the battery, discharging it.
- When you use your "WALKMAN" for the first time, or if you have not used your "WALKMAN" for a long time, it may take a few minutes to be recognized by the computer, even if charging has already started (the OPR lamp lights up in red). Check that the computer recognizes your "WALKMAN" after you have connected it to the computer for about 5 minutes.

Checking the remaining battery power

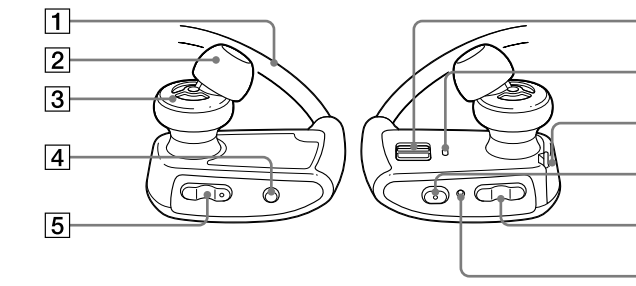
Remaining battery power is indicated by the OPR lamp. When the OPR lamp color changes to red, recharge the battery.



When the battery is depleted, the OPR lamp blinks red quickly and a long beep is heard. After that, you cannot operate your "WALKMAN."

* Blinks at about 5 second intervals during playback and pause.

Parts and Controls



- | | |
|--|-----------------------------------|
| 1 Neckband | 6 POWER switch |
| 2 Earbud | 7 OPR (Operation) lamp |
| 3 Headphone section | 8 USB jack cover |
| 4 SHUF (Shuffle)/PLAYLISTS button | 9 ▶ button* ¹ |
| 5 VOL +* ¹ /- button | 10 ◀◀/▶▶ button |
| | 11 RESET button |

*¹ There are tactile dots. Use them to help with button operations.

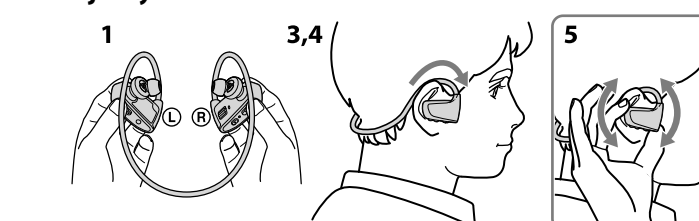
How to install the earbuds

At the time of purchase, M size earbuds are installed (S and L sizes are also supplied). To enjoy better sound quality, change the size of the earbuds or adjust the earbud position to fit in your ears comfortably and snugly. When you replace the earbuds, twist them so they attach firmly on your "WALKMAN" to prevent the earbuds from detaching and remaining in your ear. If an earbud becomes damaged, optional earbuds (EP-EX1) are available for purchase.



Turning the power on and place your "WALKMAN" on your ear.

- 1** Check the left (L) and right (R) parts of your "WALKMAN."
- 2** Slide the POWER switch located on the right (R) part to the ON position to turn on your "WALKMAN."
- 3** Hang the neckband over the back of your ears.
- 4** Place the headphone sections into your ears.
- 5** Adjust your "WALKMAN" so it feels comfortable.



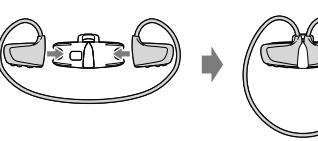
Note

- If your "WALKMAN" does not feel comfortable, replace the earbuds. Refer to "How to install the earbuds."

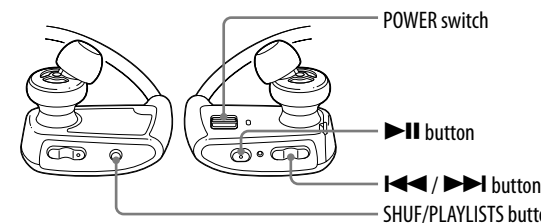
How to store your "WALKMAN" in the holder

Whenever carrying or when not using your "WALKMAN," store your "WALKMAN" in the supplied holder.

- 1** Turn off your "WALKMAN."
- 2** Attach your "WALKMAN" to the holder firmly.



Playing Music



Turning your "WALKMAN" on and off

Slide the POWER switch to turn on or off.

Playing songs

Press the ►|| button.

To pause playback

Press the ►|| button.

Skipping to the previous/next song

Press the ◀◀ (backward) or ▶▶ (forward) button.

Skipping to the previous/next folder

Press and hold the ◀◀ (backward) or ▶▶ (forward) button for longer than 1 second to skip to the beginning of the previous or next folder.

Shuffle playback

Press the SHUF (Shuffle)/PLAYLISTS button to play songs in random order.

Note

- During shuffle playback, you cannot skip to the previous or next folder, even if you press and hold the ◀◀/▶▶ button for longer than 1 second.

Playing a playlist

Press and hold the SHUF (Shuffle)/PLAYLISTS button for longer than 1 second to play songs in a playlist. Press and hold the ◀◀/▶▶ button for longer than 1 second to skip to the beginning of the previous/next playlist. To return to playback of all the songs transferred to your "WALKMAN," press and hold the SHUF (Shuffle)/PLAYLISTS button for longer than 1 second during playback of songs in a playlist.

Note

- When you play songs in a playlist, only the songs registered in the playlist are played back repeatedly.

What is ZAPPIN Playback?



ZAPPIN enables sequential playback of song clips for a preset duration.

Normal playback



Press and hold the ►|| button for longer than 1 second during normal playback.

Zappin in!



Press the ►|| button shortly during ZAPPIN playback.

ZAPPIN playback

The ZAPPIN playback can be set to either "Zappin short" for 4 seconds or "Zappin long" for 15 seconds. Press and hold the ►|| button for longer than 1 second to change to "short" or "long."

Press and hold the ►|| button for longer than 1 second.



4 sec.

15 sec.

Hint

- You can skip to the previous/next song clip, play back song clips in random order, or play song clips in a playlist. The operating procedure is same as that for normal playback.

Troubleshooting

If your "WALKMAN" does not function as expected, try the following steps to resolve the issue.

1 Find the symptoms of the issue in "Troubleshooting" in the User Guide (HTML document), and try any corrective actions listed.

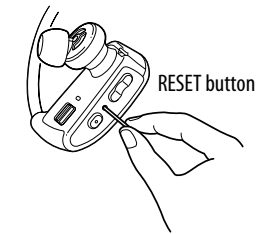
For details on troubleshooting, see the tables on the right too.

2 Connect your "WALKMAN" to your computer to charge the battery.

You may be able to resolve some issues by charging the battery.

3 Press the RESET button with a small pin, etc.

- When you reset your "WALKMAN," please make sure of the following.
- The POWER switch is on the ON position.
 - Your "WALKMAN" is not connected to your computer.
 - Your "WALKMAN" is not playing back music.



4 Check information on the issue in the Help of the individual software.

5 Look up information on the issue on one of the customer support web sites.

About the customer support web sites, see "For the latest information."

6 If the approaches listed above fail to resolve the issue, consult your nearest Sony dealer.

Symptom	Cause/Remedy
Battery life is short.	<ul style="list-style-type: none">• When your computer enters a power saving mode such as the Sleep or Hibernation mode while your "WALKMAN" is connected via the USB cable, the battery of your "WALKMAN" will not be charged. Instead, your "WALKMAN" continues to draw power from the battery, discharging it.<ul style="list-style-type: none">→ Disconnect the USB cable after fully charging.→ Prevent your computer from entering Sleep or Hibernation mode.
Your "WALKMAN" cannot charge the battery.	<ul style="list-style-type: none">• The USB cable is not connected to a USB connector on your computer properly.<ul style="list-style-type: none">→ Disconnect the USB cable, and then reconnect it.→ Use the supplied USB cable.• The battery is charged in an ambient temperature out of the range of 5 °C (41 °F) to 35 °C (95 °F).<ul style="list-style-type: none">→ Charge the battery in an ambient temperature of 5 °C (41 °F) to 35 °C (95 °F).• Your computer is not on.<ul style="list-style-type: none">→ Turn on the computer.• Your computer has entered Sleep or Hibernation mode.<ul style="list-style-type: none">→ Cancel the computer's Sleep or Hibernation mode.• If the symptom that you encountered does not apply to those listed above, press the RESET button of your "WALKMAN" and reconnect it to the computer by using the USB cable (supplied).• You have not used your "WALKMAN" for more than a year.<ul style="list-style-type: none">→ Depending on the conditions under which your "WALKMAN" is used, the battery may have been deteriorated. Consult your nearest Sony dealer.
The computer does not recognize your "WALKMAN."	<ul style="list-style-type: none">• Your "WALKMAN" is not connected to the computer by using the supplied USB cable.<ul style="list-style-type: none">→ Connect your "WALKMAN" to the computer by using the supplied USB cable. If you use a USB cable other than the one supplied, it may not connect to the computer properly and the computer may not recognize your "WALKMAN."

Symptom	Cause/Remedy
The computer does not recognize your "WALKMAN." (Continued)	<ul style="list-style-type: none">• Your "WALKMAN" is not connected to the supplied USB cable properly.<ul style="list-style-type: none">→ Connect your "WALKMAN" to the supplied USB cable properly and firmly. Charging will start (the OPR lamp lights up in red) even if the connection was not made properly, but there is a possibility that the computer has not recognized your "WALKMAN." In such a case, disconnect your "WALKMAN" from the supplied USB cable and then connect to the supplied USB cable again.• The remaining battery power is low or insufficient<ul style="list-style-type: none">→ Recharge the battery. When you use your "WALKMAN" for the first time, or if you have not used your "WALKMAN" for a long time, it may take a few minutes to be recognized by the computer, even if charging has already started (the OPR lamp lights up in red). Check that the computer recognizes your "WALKMAN" after you have connected it to the computer for about 5 minutes.• Software authentication may be performed, and that process may take a long time. Please wait for it to complete.<ul style="list-style-type: none">→ Reinstall the software by using the installer. The imported data will remain untouched.• The computer is running another software other than that used for transferring.<ul style="list-style-type: none">→ Disconnect the USB cable, wait for a few minutes, and reconnect it. If the problem persists, disconnect the USB cable, restart the computer, and then reconnect the USB cable.
Your "WALKMAN" cannot delete songs.	<ul style="list-style-type: none">• You cannot delete transferred songs directly on your "WALKMAN."<ul style="list-style-type: none">→ To delete songs from your "WALKMAN," use the software you used to transfer the songs, or use Windows Explorer.

Formatting your "WALKMAN"

If you format your "WALKMAN," all data will be erased and all settings will be returned to the default status.

Notes

- If the memory is formatted, all data (songs, etc., including sample data installed at the factory, bundled software installer and the User Guide) will be erased. Be sure to verify the data stored in memory prior to formatting and export any important data to the hard disk of your computer.
- Be sure not to initialize (format) the built-in flash memory of your "WALKMAN" using Windows Explorer. If you have formatted with Windows Explorer, format again using your "WALKMAN."
- Formatting is available only while playback is stopped.
- If the OPR lamp lights up in red due to low remaining battery power, charge the battery before formatting your "WALKMAN."
- The Content Transfer software included with your "WALKMAN" will also be deleted if the memory is formatted. If you need to reinstall it, download Content Transfer from the customer support web sites.
- The settings of shuffle playback, playlist playback, ZAPPIN playback, AVLS (volume limit), and volume setting also return to their defaults if the memory is formatted.

1 Turn on your "WALKMAN."

2 Press and hold the ►|| button for about 15 seconds until the OPR lamp blinks orange quickly.

Release the ►|| button. The OPR lamp lights up in red.

3 Press the ◀◀ or ▶▶ button within 30 seconds after the OPR lamp lights up in red.

The OPR lamp lights up in green and red alternately each time you press the ◀◀ or ▶▶ button.

4 Press the ►|| button while the OPR lamp lights up in green.

The OPR lamp blinks green quickly and formatting is executed. When the OPR lamp turns off, formatting is completed. If you press the ►|| button while the OPR lamp lights up in red, or if 30 seconds have passed, formatting will be canceled.

Precautions

License and Trademark Notice
Refer to the User Guide (HTML document).

Owner's Record

The model and serial numbers are located on the back of the player. Record them in the space provided below. Refer to these numbers in the spaces whenever you call upon your Sony dealer regarding this product.
Model No. _____
Serial No. _____

At high volume, prolonged listening to the personal audio player can damage the user's hearing.



"FOR UNITED STATES CUSTOMERS. NOT APPLICABLE IN CANADA, INCLUDING IN THE PROVINCE OF QUEBEC.
POUR LES CONSOMMATEURS AUX ÉTATS-UNIS. NON APPLICABLE AU CANADA, Y COMPRIS LA PROVINCE DE QUÉBEC."

Do not expose the batteries (battery pack or batteries installed) to excessive heat such as sunshine, fire or the like for a long time.

Rated current consumption 500 mA

This Class B digital apparatus complies with Canadian ICES-003.

For the latest information

If you have any questions or issues with this product, or would like information on items compatible with this product, visit the following web sites.

For customers in the USA:

<http://www.sony.com/walkmansupport>

For customers in Canada:

<http://www.sony.ca/ElectronicsSupport/>

For customers in Europe:

<http://support.sony-europe.com/DNA>

For customers in Latin America:

<http://www.sony-latin.com/index.crp>

For customers in other countries/regions:

<http://www.sony-asia.com/support>

For customers who purchased the overseas models:

<http://www.sony.co.jp/overseas/support/>