



GT-P8510

User Manual

About this manual

This device provides high quality mobile communication and entertainment using Samsung's high standards and technological expertise. This user manual is specially designed to detail the device's functions and features.

- Please read this manual before using the device to ensure safe and proper use.
- Descriptions are based on the device's default settings.
- Images and screenshots may differ in appearance from the actual product.
- Content may differ from the final product, or from software provided by service providers or carriers, and is subject to change without prior notice. For the latest version of the manual, refer to the Samsung website, *www.samsung.com*.
- Available features and additional services may vary by device, software, or service provider.
- Applications and their functions may vary by country, region, or hardware specifications. Samsung is not liable for performance issues caused by applications from any provider other than Samsung.
- Samsung is not liable for performance issues or incompatibilities caused by edited registry settings or modified operating system software. Attempting to customise the operating system may cause the device or applications to work improperly.
- Software, sound sources, wallpapers, images, and other media provided with this device are licensed for limited use. Extracting and using these materials for commercial or other purposes is an infringement of copyright laws. Users are entirely responsible for illegal use of media.
- This product includes certain free/open source software. The exact terms of the licences, disclaimers, acknowledgements and notices are available on the Samsung's website *opensource.samsung.com*.
- Default applications that come with the device are subject to updates and may no longer be supported without prior notice. If you have questions about an application provided with the device, contact a Samsung Service Centre. For user-installed applications, contact service providers.
- Modifying the device's operating system or installing softwares from unofficial sources may result in device malfunctions and data corruption or loss. These actions are violations of your Samsung licence agreement and will void your warranty.

Instructional icons



Warning: situations that could cause injury to yourself or others



Caution: situations that could cause damage to your device or other equipment



Note: notes, usage tips, or additional information

Copyright

Copyright © 2012 Samsung Electronics

This guide is protected under international copyright laws.

No part of this guide may be reproduced, distributed, translated, or transmitted in any form or by any means, electronic or mechanical, including photocopying, recording, or storing in any information storage and retrieval system, without the prior written permission of Samsung Electronics.

Trademarks

- SAMSUNG and the SAMSUNG logo are registered trademarks of Samsung Electronics.
- Bluetooth® is a registered trademark of Bluetooth SIG, Inc. worldwide.
- Wi-Fi®, Wi-Fi CERTIFIED™, and the Wi-Fi logo are registered trademarks of the Wi-Fi Alliance.
- All other trademarks and copyrights are the property of their respective owners.



Table of Contents

Getting started

- 6 Device layout
- 7 Buttons
- 7 Package contents
- 8 Charging the battery
- 10 Inserting a memory card
- 12 Turning the device on and off
- 13 Holding the device
- 13 Locking and unlocking the device
- 13 Adjusting the volume
- 13 Switching to silent mode

Basics

- 14 Using the touch screen
- 17 Rotating the screen
- 17 Start screen
- 18 Using the charms
- 19 Using applications
- 21 Applications screen
- 22 Windows desktop applications
- 22 Notifications
- 23 Entering text
- 24 Connecting to a Wi-Fi network
- 25 Transferring files
- 25 Securing the device
- 26 Updating the device

Communication

- 27 People
- 29 Mail
- 30 Messaging
- 30 ChatON

Web & network

- 31 Internet Explorer
- 32 Bing
- 32 Bluetooth
- 33 doubleTwist AirSync
- 33 NFC

Media

- 35 Music
- 36 Camera
- 38 Photos
- 40 Photo Editor
- 41 Video
- 41 Finance
- 42 News
- 42 Sport
- 42 Travel
- 43 Weather

Application & media stores

44 Store

44 Games

56 HomeGroup

56 Windows Update

Utilities

45 Calendar

46 SkyDrive

46 Box

46 Reader

Travel & local

47 Maps

Settings

48 About Settings

48 Personalise

48 Users

49 Notifications

50 Search

50 Share

51 General

53 Privacy

54 Devices

54 Wireless

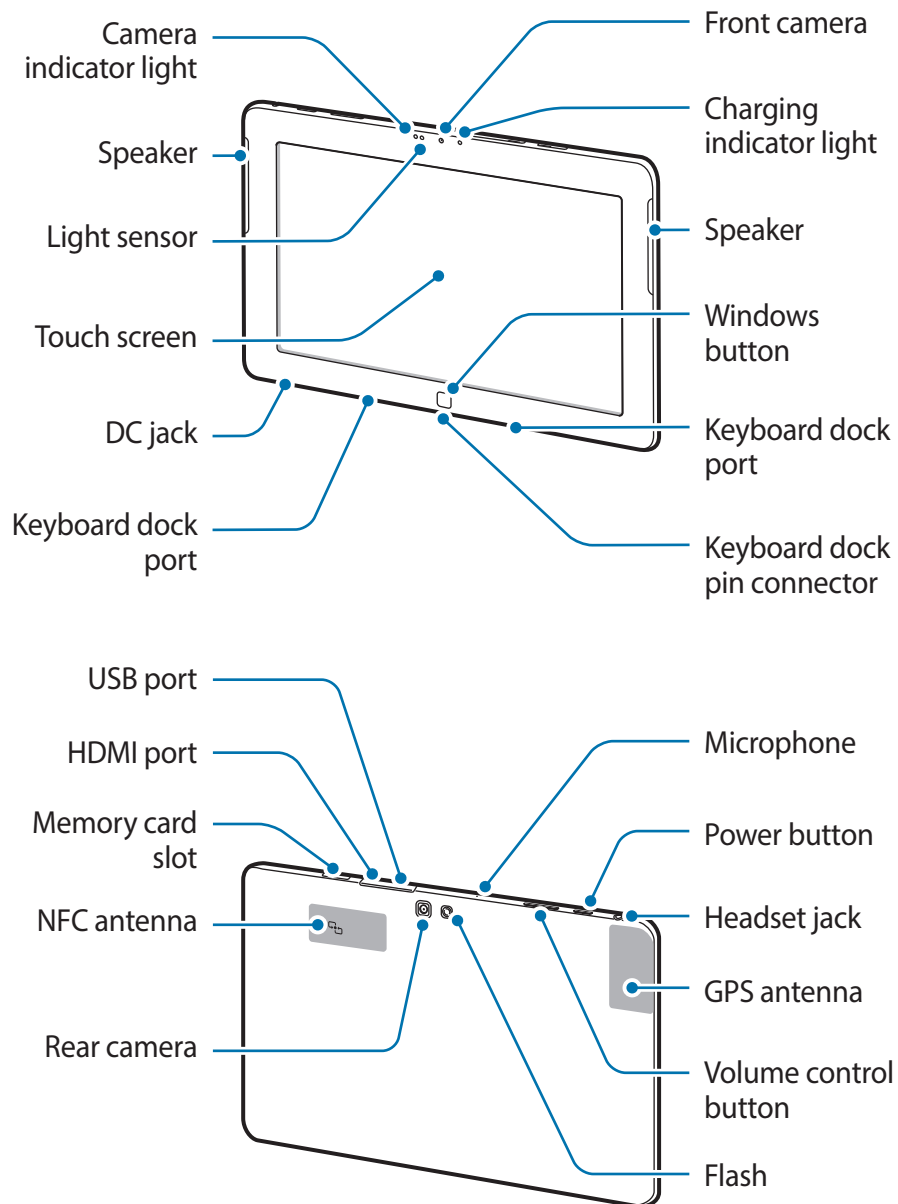
55 Ease of Access

55 Sync your settings

Troubleshooting

Getting started

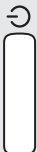

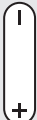
Device layout





- Do not cover the antenna area with your hands or other objects. This may cause connectivity problems or drain the battery.
- Do not use a screen protector. This causes sensor malfunctions.
- Do not allow water to contact the touch screen. The touch screen may malfunction in humid conditions or when exposed to water.

Buttons

Button	Function
 Power	<ul style="list-style-type: none"> • Press to turn the device on. • Press and hold for 7-10 seconds until the device turns off if it freezes. • Press to lock or unlock the device. The device goes into lock mode when the touch screen turns off.
 Windows	<ul style="list-style-type: none"> • Press to return to the Start screen. • Press on the Start screen to open the most recent application.
 Volume control	<ul style="list-style-type: none"> • Press to adjust the device volume.

Package contents

Check the product box for the following items:

- Device
- Quick start guide
- AC power adapter
- Power cable



Use only Samsung-approved software. Pirated or illegal software may cause damage or malfunctions, which are not covered by the warranty.



- The items supplied with the device and any available accessories may vary depending on the region or service provider.
- The supplied items are designed only for this device and may not be compatible with other devices.
- Appearances and specifications are subject to change without prior notice.
- You can purchase additional accessories from your local Samsung retailer. Make sure they are compatible with the device before purchase.
- Other accessories may not be compatible with your device.
- Use only Samsung-approved accessories. Malfunctions caused by using unapproved accessories are not covered by the warranty service.
- Availability of all accessories is subject to change depending entirely on manufacturing companies. For more information about available accessories, refer to the Samsung website.

Charging the battery

Charge the battery before using it for the first time. Use the charger to charge the battery.



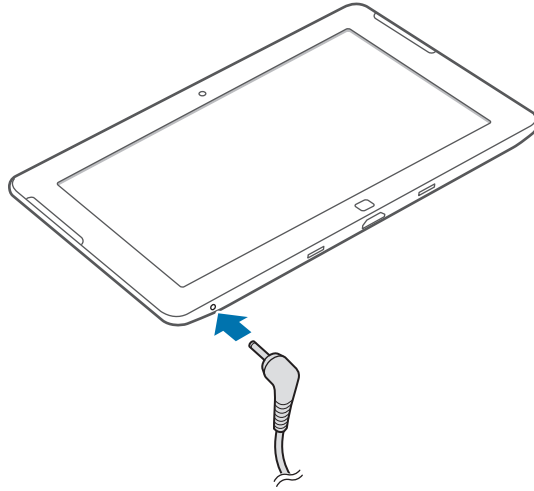
Use only Samsung-approved chargers, batteries, and cables. Unapproved chargers or cables can cause the battery to explode or damage the device.



- When the battery power is low, the device emits a warning tone and displays a low battery power message.
- If the battery is completely discharged, the device cannot be turned on immediately when the charger is connected. Allow a depleted battery to charge for a few minutes before turning on the device.

Charging with the charger

Connect the power cable to the AC power adapter, and plug the end of the AC power adapter into the DC jack. Then, plug the power cable into an electric socket.



Connecting the charger improperly may cause serious damage to the device. Any damage caused by misuse is not covered by the warranty.



- The device can be used while it is charging, but it may take longer to fully charge the battery.
- If the device receives an unstable power supply while charging, the touch screen may not function. If this happens, unplug the charger from the device.
- While charging, the device may heat up. This is normal and should not affect the device's lifespan or performance. If the battery gets hotter than usual, the charger may stop charging.
- If the device is not charging properly, take the device and the charger to a Samsung Service Centre.

After fully charging, disconnect the device from the charger. First unplug the charger from the device, and then unplug it from the electric socket.



To save energy, unplug the charger when not in use. The charger does not have a power switch, so you must unplug the charger from the electric socket when not in use to avoid wasting power. The device should remain close to the electric socket while charging.

Reducing the battery consumption

Your device provides options that help you save battery power. By customising these options and deactivating features in the background, you can use the device longer between charges:

- When you are not using the device, switch to sleep mode by pressing the Power button.
- Close unnecessary applications with the task manager.
- Deactivate the Bluetooth feature.
- Disconnect the Wi-Fi connection.
- Deactivate auto-syncing of applications.
- Decrease the backlight time.
- Decrease the brightness of the display.

Inserting a memory card

Your device accepts memory cards with maximum capacities of 64 GB. Depending on the memory card manufacturer and type, some memory cards may not be compatible with your device.

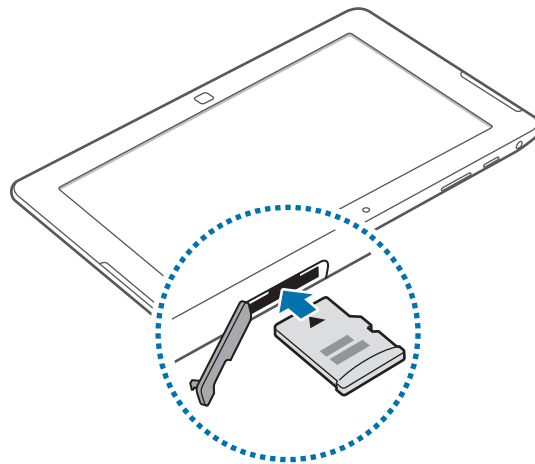


- Some memory cards may not be fully compatible with the device. Using an incompatible card may damage the device or the memory card, or corrupt the data stored in it.
- Use caution to insert the memory card right-side up.




- The device supports the FAT, exFAT, NTFS file system for memory cards. When inserting a card formatted in a different file system, the device asks to reformat the memory card.
- Frequent writing and erasing of data shortens the lifespan of memory cards.

- 1 Insert a memory card with the gold-coloured contacts facing downwards.
- 2 Push the memory card into the slot until it locks in place.



Removing the memory card

Before removing the memory card, first unmount it for safe removal. Flick from the right edge of the screen towards the middle of the screen to use the charms, and then tap **Settings** → **Change PC settings** → **Devices** → **SD Memory Card** →  → **Remove**.

Push the memory card until it disengages from the device, and then pull it out.

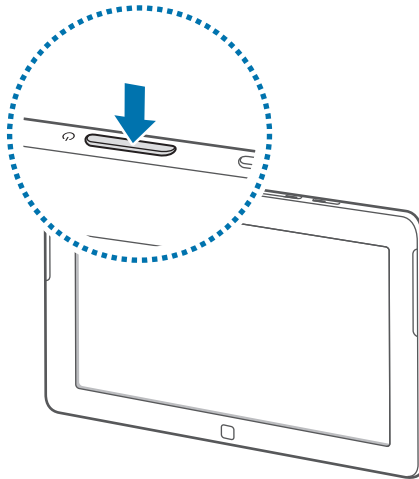


Do not remove the memory card while the device is transferring or accessing information. Doing so can cause data to be lost or corrupted or damage to the memory card or device. Samsung is not responsible for losses that result from the misuse of damaged memory cards, including the loss of data.

Turning the device on and off

When turning on the device for the first time, follow the on-screen instructions to set up your device.

Press the Power button to turn on the device.



- Follow all posted warnings and directions from authorised personnel in areas where the use of wireless devices is restricted, such as aeroplanes and hospitals.
- Flick from the right edge of the screen towards the middle of the screen to use the charms, tap **Settings** → **Change PC settings** → **Wireless**, and then drag the **Flight mode** switch to the right to disable the wireless features.

To turn off the device, flick from the right edge of the screen towards the middle of the screen to use the charms, and then tap **Settings** → **Power** → **Shut down**.

Holding the device


Do not cover the antenna area with your hands or other objects. This may cause connectivity problems or drain the battery.

Locking and unlocking the device



When not in use, lock the device to prevent unwanted operation. Pressing the Power button turns off the screen and puts the device into lock mode. The device automatically gets locked if it is not used for a specified period.

To unlock the device, press the Power button or the Windows button when the touch screen is turned off, and then drag the lock screen background up.

Adjusting the volume

Press the Volume control button up or down to adjust the system volume, or to adjust the sound volume when playing music or video. You can also flick from the right edge of the screen towards the middle of the screen to use the charms, and tap **Settings** → .

Switching to silent mode

Flick from the right edge of the screen towards the middle of the screen to use the charms, and tap **Settings** →  → .

Basics

Using the touch screen

Use only fingers to use the touch screen.

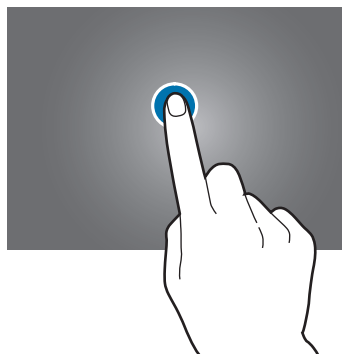


- Do not allow the touch screen to come into contact with other electrical devices. Electrostatic discharges can cause the touch screen to malfunction.
- Do not allow the touch screen to contact water. The touch screen may malfunction in humid conditions or when exposed to water.
- To avoid damaging the touch screen, do not tap it with anything sharp or apply excessive pressure to it with your fingertips.
- Leaving the touch screen idle for extended periods may result in afterimages (screen burn-in) or ghosting. Turn off the touch screen when you do not use the device.

Finger gestures

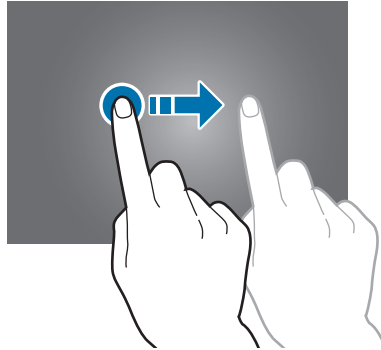
Tapping

To open an application, to select a menu item, to press an on-screen button, or to enter a character using the on-screen keyboard, tap it with a finger.



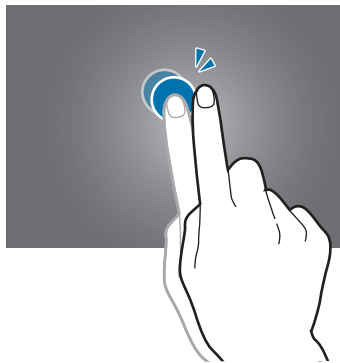
Dragging

To move an icon, thumbnail, or preview to a new location, tap and hold it and drag it to the target position.



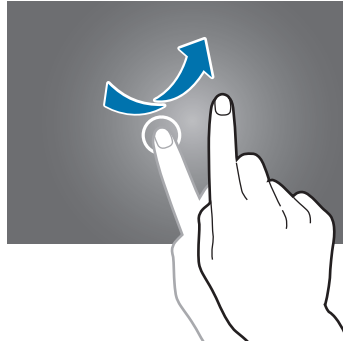
Double-tapping

Double-tap to zoom in a part. Double-tap again to return.



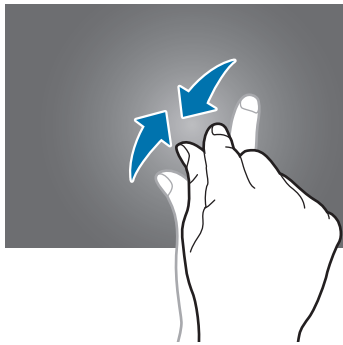
Flicking

Flick left or right to see another panel. Flick up or down to scroll through a webpage or a list, such as contacts.




Pinching

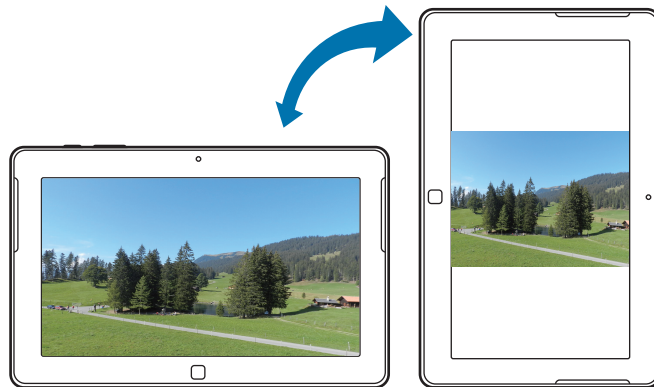
Spread two fingers apart on a webpage, map, or image to zoom in a part. Pinch to zoom out.



Rotating the screen

Many applications allow display in either portrait or landscape orientation. Rotating the device causes the display to automatically adjust to fit the new screen orientation.

To use this feature, flick from the right edge of the screen towards the middle of the screen to use the charms, and then tap **Settings** → **Screen** → .



- Some applications do not allow screen rotation.
- Some applications display a different screen depending on the orientation.

Start screen

The Start screen is the starting point to access all of the device's features.

Rearranging items

Adding an application tile

On the Start screen, flick upwards from the bottom edge or flick downwards from the top edge of the screen to open the options bar, and then tap **All apps**. Flick up or down on an application icon to open the options bar, and then tap **Pin to Start**.

Moving an item

Tap and hold an item and drag it to a new location.

Resizing an item

Flick up or down on an item. A tick mark appears on the item and the options bar appears at the bottom of the screen. Tap **Larger** to enlarge it or **Smaller** to reduce it.

Removing an item

Flick up or down on an item, and then, tap **Unpin from Start**.

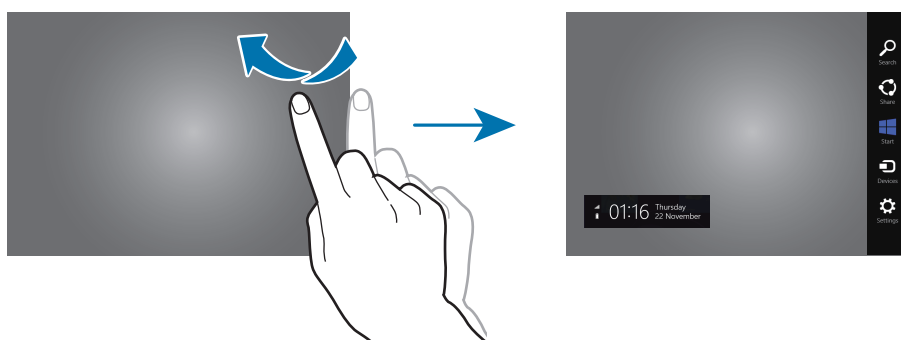
Changing the tile view mode

Some items on the Start screen are displayed as live tiles, which show a brief summary of their contents. To change a live tile to a static tile, flick up or down on the tile, and then tap **Turn live tile off**.

Using the charms

Use the charms to access basic functions, such as search, file sharing, or settings. While the charms appear on the right side of the screen, the notifications panel appears on the left side, displaying the current time and date, Wi-Fi connection status, and battery power level.

To use the charms, flick from the right edge of the screen towards the middle of the screen.



You can use the following charms:

- **Search:** Search for data in applications.
- **Share:** Share files with others.
- **Start:** Return to the Start screen or open the most recent application.
- **Devices:** Share files with connected devices.
- **Settings:** Access the settings panel to configure settings for the device or applications.

Using applications

This device can run many different types of applications, ranging from media to Internet applications. Some applications are available only in Windows desktop mode.

Opening an application

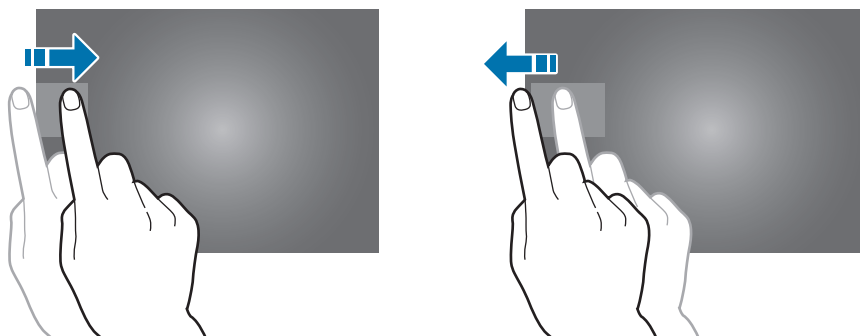
On the Start screen or the Applications screen, tap an application icon to open it.

Opening the most recent application

Flick from the left edge of the screen towards the middle of the screen to open the most recent application.

Switching applications

Flick inward from the left edge of the screen and then back again to open the list of active applications.



To deactivate this feature, flick from the right edge of the screen towards the middle of the screen, tap **Settings** → **Change PC settings** → **General**, and then drag the **Allow switching between recent apps** switch to the left.

Using dual view

Switch to dual view to run two applications on the screen at once.

While using an application, open the list of active applications, drag an application to the right, and then drop it when the partition appears.



Tap and hold the partition, and then drag it to adjust the size of each application panel.

To return to single view, tap and hold the partition, and then drag it to the left or right edge of the screen.

Closing an application

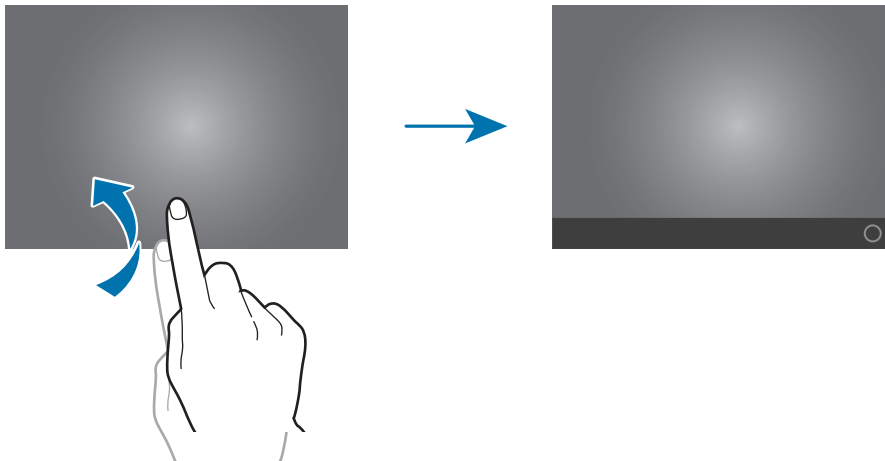
Close applications not in use to save battery power and maintain device performance.

Tap **Task Manager** on the Applications screen, select an application, and then tap **End task** to close it. You can also drag an application screen downwards from the top edge of the screen to close it.

Applications screen

The Applications screen displays icons for all applications, including any new applications installed.

On the Start screen, flick upwards from the bottom edge or flick downwards from the top edge of the screen to open the options bar, and then tap **All apps** to open the Applications screen.



The location of the options bar may vary depending on the applications.

Installing applications

Use application stores, such as **Store**, to download and install applications.



You cannot install Windows desktop applications on this device. This device will run only applications from the Windows Store.

Uninstalling applications

Flick up or down on an application, and then tap **uninstall**.



Some default applications that come with the device cannot be uninstalled.

Windows desktop applications

Use Windows desktop mode like as an ordinary Windows computer. In Windows desktop mode, you can run Windows desktop applications, such as Windows Accessories. On the Applications screen, select a desktop application to open it.

Microsoft Office 2013 (Office Home and Student 2013 RT Preview)

Use Microsoft Office programs, such as Excel and Word.



Office Home and Student 2013 RT Preview edition installed. Final Office version will be installed via Windows Update when available (free download; ISP fees apply). Some features and programs unsupported. See <http://office.com/officeRT>.

Windows Accessories

Use handy tools to help your work, such as a calculator and a notepad.

Windows Ease of Access

Use applications to improve your accessibility to contents or functions, such as the magnifier and the text-to-speech feature.

Windows System

Use applications for managing Windows system settings, such as Command Prompt and Windows Defender.

Notifications

The device shows notification alerts for various events.

To set the length of time to show notifications, flick from the right edge of the screen towards the middle of the screen and tap **Settings** → **Change PC settings** → **Ease of Access** → **Show notifications for**.

To set the length of time to hide notifications before showing them again, flick from the right edge of the screen towards the middle of the screen and tap **Settings** → **Notifications**.

Entering text

Use the Qwerty keyboard to enter text.






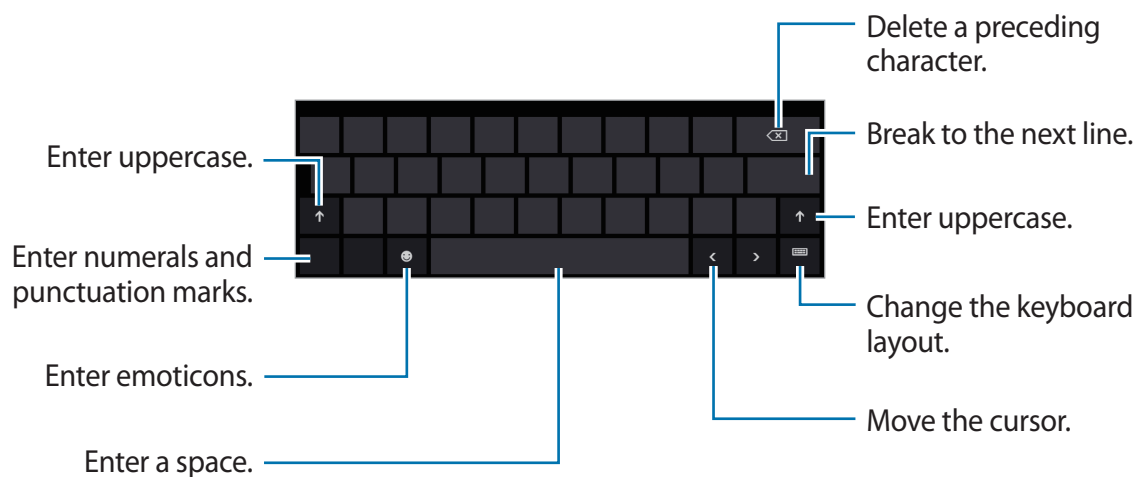
Text entry is not supported in some languages. To enter text, you must change the input language to one of the supported languages.

Using the Qwerty keyboard


Changing the keyboard layout

To change the keyboard layout, tap  and select one of the following:

- : Simplified Qwerty keyboard.
- : Split Qwerty keyboard for entering text with two hands.
- : Standard Qwerty keyboard.



Entering uppercase

Tap  before entering a character. For all caps, tap it twice.

Changing language keyboards

You must add keyboards to enter text in other languages. Flick from the right edge of the screen towards the middle of the screen, tap **Settings** → **Change PC settings** → **General** → **Language preferences** → **Add a language**, select a language, and then tap **Add**.


To change languages, tap  and then select one from the list of keyboard languages that appears.


Handwriting

Tap  → , write a word with a finger, and then tap **Insert**.

To view the handwriting tutorial, tap .

Copying and pasting

Tap over text, drag  to select more or less text, tap the text again, and then tap **Copy** to copy or **Cut** to cut. The selected text is copied to the clipboard.

To paste it into a text entry field, place the cursor at the point where it should be inserted, and then tap  → **Paste**.

Connecting to a Wi-Fi network

Connect the device to a Wi-Fi network to use the Internet. (p. 54)

Turning Wi-Fi on or off

Flick from the right edge of the screen towards the middle of the screen, tap **Settings** → **Change PC settings** → **Wireless**, and then drag the **WiFi** switch to the right to turn it on. Drag the **WiFi** switch to the left to turn it off.



- Your device uses a non-harmonised frequency and is intended for use in all European countries. The WLAN can be operated in the EU without restriction indoors, but cannot be operated outdoors.
- Turn off Wi-Fi to save the battery when not in use.

Joining Wi-Fi networks

Flick from the right edge of the screen towards the middle of the screen, and then tap **Settings** → **Available**.

Select a network from the list of detected Wi-Fi networks, tap **Connect automatically** → **Connect**, enter a password if necessary, and then tap **Next**. After the device connects to a Wi-Fi network, the device will automatically connect to it any time it is available.

Transferring files

Move or copy audio, video, image, or other types of files from the device to memory cards or USB storage devices, or vice versa.

- 1 Insert a memory card, or connect a USB storage device to the USB port.
- 2 On the Applications screen, tap **Computer**.
- 3 Transfer files between your device and the memory card or USB storage device.

Securing the device

Prevent others from using or accessing personal data and information stored in the device by using the security features. The device requires a preset password whenever unlocking it.

Setting a password

Flick from the right edge of the screen towards the middle of the screen and tap **Settings** → **Change PC settings** → **Users** → **Create a password**. Enter a password and hint, and then tap **Next** → **Finish**.

Select an option from the **Require a password after the display has been off for** dropdown menu.

Setting a picture password

Flick from the right edge of the screen towards the middle of the screen and tap **Settings** → **Change PC settings** → **Users** → **Create a picture password**.

Enter the current password, tap **OK** → **Choose picture**, select one of the images saved in the device, and then tap **Open** → **Use this picture**.

Draw three gestures on the image, draw the gestures again to verify it, and then tap **Finish**.

Setting a PIN

Flick from the right edge of the screen towards the middle of the screen and tap **Settings** → **Change PC settings** → **Users** → **Create a PIN**.

Enter the current password and tap **OK**. Enter at least four numbers, enter the PIN again to verify it, and then tap **Finish**.

Unlocking the device

Turn on the screen by pressing the Power button or the Windows button, drag the lock screen background up, and then enter the password.

If you set a PIN, tap **Sign-in options** and select an option for unlocking the device with another method.

If you set a picture password, tap **Switch to password** to unlock the device by entering the password.



If the unlock code is forgotten, take the device to a Samsung Service Centre to reset it.

Updating the device

Keep the device up-to-date by downloading and installing updates, such as service packs and patches, for the operating system and other Microsoft applications.

The device is set to download and install updates automatically. To check for available updates manually, flick from the right edge of the screen towards the middle of the screen and tap **Settings** → **Change PC settings** → **Windows Update** → **Check for updates now**.

Communication

People

Use this application to manage contacts, including phone numbers, email addresses, and others.

Tap **People** on the Applications screen.

Setting up an account

This application requires a Microsoft account. If you have not already registered an account on the device, follow the on-screen instructions to complete the account setup.

Managing contacts

Creating a contact

Open the options bar, tap **New**, and then enter contact information.

Editing a contact

Select a contact to edit, open the options bar, and then tap **Edit**.

Deleting a contact

Select a contact to delete, open the options bar, and then tap **Delete**.

Searching for contacts

Use one of the following search methods:

- Scroll left or right on the contacts list.
- Pinch on the screen to switch to the index view.

Once a contact is selected, take one of the following actions:

- **Send email:** Compose an email.
- **Call mobile:** Make a call using an Internet calling application.
- **View profile:** View more details of a contact.

Importing and exporting contacts

Adding accounts

To add contacts for your email or social networking accounts to the device, flick from the right edge of the screen towards the middle of the screen, tap **Settings** → **Accounts** → **Add an account** → a service, and then follow the on-screen instructions to complete the account setup.

Syncing with Microsoft accounts or social network sites

If a contact is added or deleted on the device, it is also added to or deleted from the Microsoft or SNS accounts, and vice versa.

Viewing posts from social network sites

Tap **What's new**, open the options bar, and then tap **Refresh**.

To add a comment, select a post, enter text into the text field at the bottom right of the screen, and then tap **Reply** or **Comment**.

Mail

Use this application to send or view email messages.

Tap **Mail** on the Applications screen.



Setting up email accounts

Set up an email account when opening **Mail** for the first time.

Enter the email address and password, and then follow on-screen instructions to complete the setup.

To set up another email account, flick from the right edge of the screen towards the middle of the screen, and then tap **Settings** → **Accounts** → **Add an account**.

Sending messages

Tap the email account to use, and then tap . Enter recipients, subject, and message, and then tap .

Tap  to add a recipient from the contacts list.

Tap **Show more** to add more recipients.

Open the options bar and tap **Attachments** to attach images, videos, and others.

Reading messages

Select an email account to use, and new messages are retrieved. To manually retrieve new messages, open the options bar and tap **Sync**.

Tap a message to read.

Tap an attachment, and then tap **Open** to open it or **Save** to save it.

Messaging

Use this application to chat with others.

Tap **Messaging** on the Applications screen.

Adding friends

Open the options bar, tap **Invite** → **Add a new friend**, enter an email address, and then tap **Next** → **Invite**.

Chatting with friends

Tap **New message**, add recipients, and then enter a message.

Deleting chat history

Chats are saved automatically. To delete chat history, open the options bar and tap **Delete**.

ChatON

Use this application to chat with any device that has a mobile phone number.

Tap **ChatON** on the Applications screen.



This application may not be available depending on the region or service provider.

Create the buddies list by entering phone numbers or email addresses of Samsung accounts, or selecting buddies from the list of suggestions.

Select a buddy to start chatting.

Web & network

Internet Explorer

Use this application to browse the Internet.

Tap **Internet Explorer** on the Applications screen.

Viewing webpages

Tap the address field, enter the web address, and then tap .

Opening a new page

Open the options bar, and then tap .

To go to another webpage, open the options bar and tap the page to select it.

Bookmarks

To bookmark the current webpage, tap  → **Add to favourites**.

To open a bookmarked webpage, tap the address field, and tap the page under **Favourites**.

History

Open the options bar to open a webpage from the list of recently-visited webpages. To clear the history, flick from the right edge of the screen towards the middle of the screen, tap **Settings** → **Internet Options**, and then tap **Delete** under **Delete Browsing History**.

Links

Tap and hold a link on the webpage to open it in a new page or copy.

Sharing webpages

To share a webpage address with others, flick from the right edge of the screen towards the middle of the screen and tap **Share**.

Bing

Use this application to search for information and browse webpages.

Tap **Bing** on the Applications screen.

Tap the search field, and then enter a keyword. Select a topic to search for pages or images related to that topic.

Tap **Trending** at the bottom of the screen to view trending topics.

Bluetooth

Bluetooth creates a direct wireless connection between two devices over short distances.



- Some devices, especially those that are not tested or approved by the Bluetooth SIG, may be incompatible with your device.
- Do not use the Bluetooth feature for illegal purposes (for example, pirating copies of files or illegally tapping communications for commercial purposes).
Samsung is not responsible for the repercussion of illegal use of the Bluetooth feature.

To activate Bluetooth, flick from the right edge of the screen towards the middle of the screen, tap **Settings** → **Change PC settings** → **Wireless**, and then drag the **Bluetooth** switch to the right.

Pairing with other Bluetooth devices

Flick from the right edge of the screen towards the middle of the screen, tap **Settings** → **Change PC settings** → **Devices** → **Add a device** to view detected devices. Select the device you want to pair with, and then accept the auto-generated passkey on both devices to confirm.

doubleTwist AirSync

Use this application to connect the device to a computer via Wi-Fi for sharing or playing media files.

Tap **doubleTwist AirSync** on the Applications screen.



- Make sure all devices are already connected to the same network.
- Make sure doubleTwist is installed on your computer.

On your computer, open **doubleTwist**, click the device's name, and then enter the PIN shown on the device.

When the connection is made, transfer files between your device and the computer.

NFC

Your device allows you to read near field communication (NFC) tags that contain various kinds of information (product information, web addresses, contact information, etc). You can also use this feature to share data with other NFC-enabled devices.



The device contains a built-in NFC antenna. Handle the device carefully to avoid damaging the NFC antenna.



If the screen is locked, your device will not read NFC tags or receive data.

To activate the NFC feature, flick from the right edge of the screen towards the middle of the screen, tap **Settings** → **Change PC settings** → **Wireless**, and then drag the **NFC** switch to the right.

Reading information from an NFC tag

Place the NFC antenna area (📶) on the back of your device near an NFC tag. Tap **Receive content?** when it appears on the screen. The information from the tag will appear.

Sending and receiving data

Select a contact or an image, or open a webpage to send. Flick from the right edge of the screen towards the middle of the screen, tap **Devices** → **Tap and send**. Touch the NFC antenna area (📶) on the back of your device to the NFC antenna area of the other device. When **Receive content?** appears on the other device, tap the screen to receive data.

Media

Music

Use this application to listen to music.

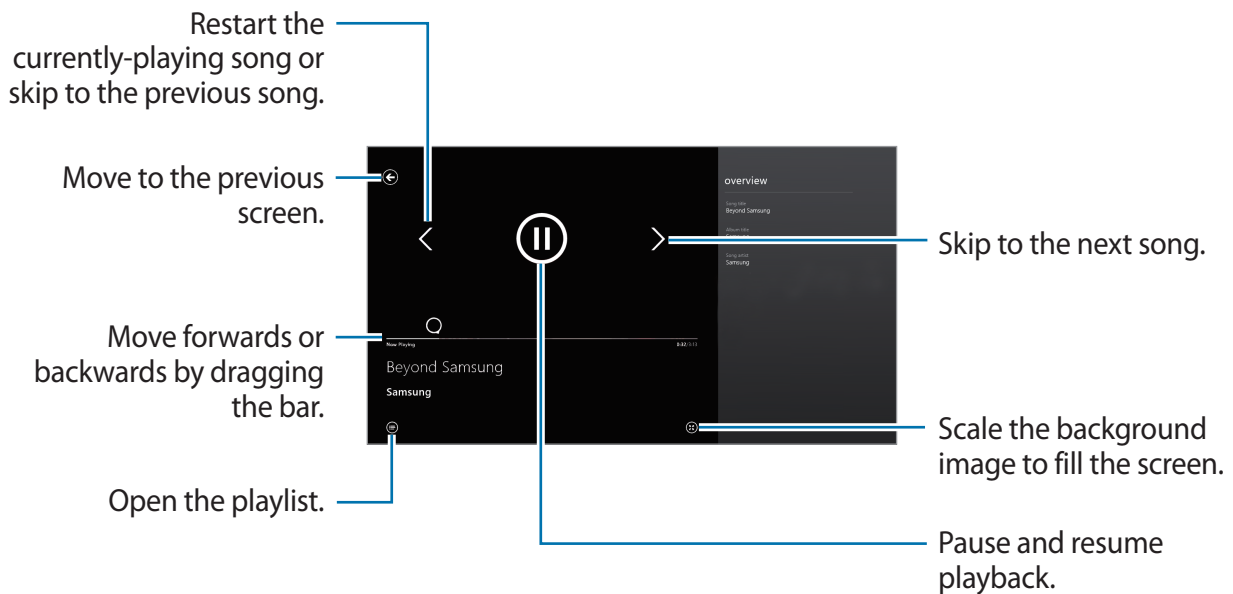
Tap **Music** on the Applications screen.



- Some file formats are not supported depending on the device's software version.
- Some files may not play properly depending on the encoding used.

Playing music

Scroll left or right to **my music**, tap **Open or play something**, and then select a song to play.



Open the options bar and select one of the following:

- **Open file:** Open a music file.
- **Shuffle:** Turn on shuffle.
- **Repeat:** Change the repeat mode.

Camera

Use this application to take photos or videos.

Use Photos to view photos and videos taken with the device's camera. (p. 38)

Tap **Camera** on the Applications screen.



The camera automatically shuts off when unused.

Camera etiquette

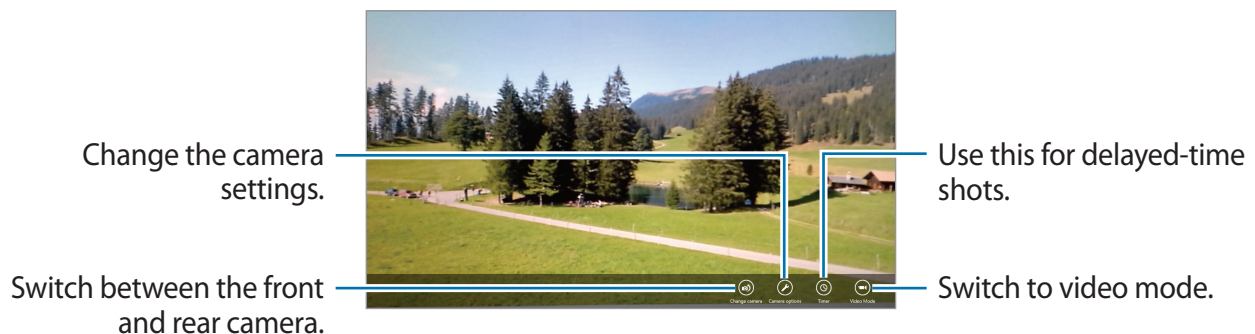
- Do not take photos or videos of other people without their permission.
- Do not take photos or videos where legally prohibited.
- Do not take photos or videos in places where you may violate other people's privacy.

Taking photos

Taking a photo

Use one of the following methods:

- Tap the screen to take the photo.
- Tap and hold the image on the preview screen where the camera should focus, and then release your finger to take the photo.



Taking videos

Taking a video

Tap **Video Mode**, and then tap the screen to take a video. To stop recording, tap the screen again.



Configuring settings for Camera

Tap **Camera options** to configure settings for Camera. Not all of the following options are available in both still camera and video camera modes. The available options vary depending on the mode used.

- **Photo resolution / Video resolution:** Select a resolution. Use higher resolution for higher quality. But it takes up more memory.
- **Audio device:** Select an audio input device.
- **White Balance:** Select an appropriate white balance, so images have a true-to-life colour range. The settings are designed for specific lighting situations. These settings are similar to the heat range for white-balance exposure in professional cameras.
- **Image Effect:** Select among various photo effects that are available.
- **Exposure Value:** This determines how much light the camera's sensor receives. For low-light situations, use a higher exposure.
- **Focus Mode:** Select a focus mode. **Normal** is camera-controlled. **Macro** is for very close objects.
- **Flash:** Select a flash mode. **Auto** is camera-controlled.

Photos

Use this application to view images and videos.

Tap **Photos** on the Applications screen.



- Some file formats are not supported depending on the software installed on the device.
- Some files may not play properly depending on how they are encoded.

Viewing images

Tap **Pictures library**, select a folder to open it, and then tap an image to view it in full screen.

Scroll left or right to view the next or previous image.

Zooming in and out

Spread two fingers apart on any place to zoom in. Pinch to zoom out.

Viewing images on other devices

To view images on other devices while logged in with the same Microsoft account, tap **Devices**. If a Microsoft account is not registered to the device, follow the on-screen instructions to complete the account setup.

Viewing images on the web

To view images from your social networking service or SkyDrive storage, select a service name. If a social networking service account is not registered on the device, follow the on-screen instructions to complete the account setup.

Playing videos

Video files show the  icon on the preview. Select a video to watch it, and **Video** launches.

Deleting images

Use one of the following methods:

- In a folder, flick up or down on an image and tap **Delete**.
- When viewing an image, open the options bar and tap **Delete**.

Sharing images

When viewing an image, flick from the right edge of the screen towards the middle of the screen and tap **Share** to send it to others.

Setting as background for the lock screen

When viewing an image, open the options bar and tap **Set as** → **Lock screen** to set the image as background for the lock screen.

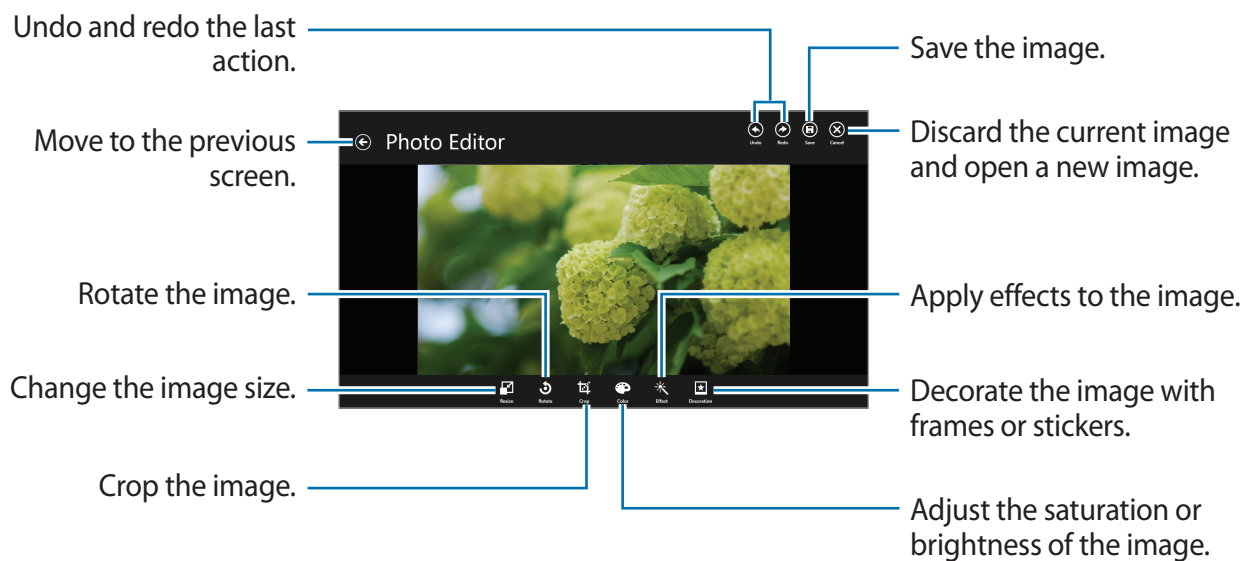
Photo Editor

Use this application to embellish photos by applying various effects, such as the oil paint effect.

Tap **Photo Editor** on the Applications screen.

To open an image, select one of the following:

- **Photos:** Select from among the images saved in the device.
- **Camera:** Take a photo to edit.



To finish, tap **Save**, set a location, filename, and file type, and then tap **Save**.

Video

Use this application to play video files.

Tap **Video** on the Applications screen.



- Some file formats are not supported depending on the device's software.
- Some files may not play properly depending on how they are encoded.

Playing videos

Scroll left or right to **my videos** and tap **Open or play something**, and then select a video to play.



Open the options bar and select one of the following:

- **Open file:** Open a video file.
- **Repeat:** Change the repeat mode.
- **Play To:** Share videos with others.

Finance

Use this application to get financial information provided by Bing. You can view indices, rates, news, articles, and statistics for stock markets.

Tap **Finance** on the Applications screen.

Scroll to a category, and then select an article to read. You can also open the options bar and select a category.

To add companies to the watchlist of stock quotes, scroll to **Watchlist** and tap **+**.


News

Use this application to get recent news provided by Bing.

Tap **News** on the Applications screen.

Scroll to a category, and select an article to read.

To read articles from a specific source, open the options bar and tap **Sources**.

To receive news about a specific topic, open the options bar and tap **My News**. Scroll to **ADD A SECTION**, tap , and then enter a keyword.

Sport

Use this application to get sports news provided by Bing. You can view schedules and results for a variety of sports.

Tap **Sport** on the Applications screen.

Scroll to a category, and select an article to read. You can also open the options bar and select a category.

To add a sports league, open the options bar and tap **All Sports**.

To get information of a specific team, open the options bar and tap **Favourite Teams** → .

Travel

Use this application to get travel information provided by Bing. You can get destination, flight, or hotel information.

Tap **Travel** on the Applications screen.

Scroll to a category, and select an article to read. You can also open the options bar and select a category.

Weather

Use this application to get weather information provided by Bing. You can view the current weather and forecasts for your current location or other regions, world weather, and weather statistics.

Tap **Weather** on the Applications screen.

Scroll left or right to view the current weather and forecasts.

To add locations, open the options bar, and then tap **Places** → .

To view world weather, open the options bar, and then tap **World weather**.

To convert the unit of temperature, open the options bar, and then tap **Change to Celsius**.

Application & media stores

Store

Use this application to purchase and download applications and games that are able to run on the device.

Tap **Store** on the Applications screen.



This application may not be available depending on the region or service provider.

Installing applications

Browse applications by category, or flick from the right edge of the screen towards the middle of the screen and tap **Search** to search for applications with a keyword.

Select an application to view information. To download it, tap **Install**. If there is a charge for the application, tap **Buy**, and follow on-screen instructions to complete the purchase process.



When a new version is available for any installed application, an update icon appears at the top of the screen to alert you to the update.

Games

Use this application to purchase and download games. You can create your own profile to play online games.

Tap **Games** on the Applications screen.



This application may not be available depending on the region or service provider.

Select a game to view more information. To download games, tap **Play**.

Utilities

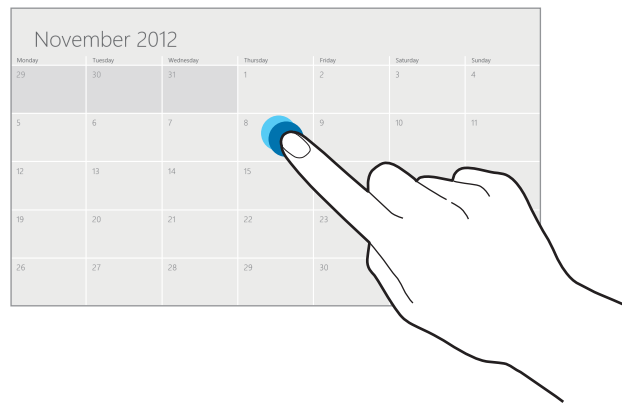
Calendar

Use this application to manage events and tasks.

Tap **Calendar** on the Applications screen.

Creating events

Tap a date or time slot.




Enter a title and specify which calendar to use or sync with. Then tap **Show more** to add more details, such as how often the event repeats or when an advance alert for the event appears.

Changing calendar type

Open the options bar and then select one from among different types of calendars including month, week, or day.

Deleting events

Select an event, and then tap .

SkyDrive

Use this application to save and share your files with others. When you save files to your SkyDrive folder, your device automatically syncs with the web server and any other computers that have SkyDrive installed.

Tap **SkyDrive** on the Applications screen.

To upload files to your SkyDrive folder, open the options bar, tap **Upload**, select a folder, select files, and then tap **Add to SkyDrive**.

To view a file, select a folder, and then select a file.

Box

Use this application to save and share your files with others. When you save files to your Box folder, your device automatically syncs with the web server and any other computers that have Box installed.

Tap **Box** on the Applications screen.

To log in, select **Log in**, enter your email address and password, and then tap **Log in**. To sign up for an account, tap **Sign up** and follow the on-screen instructions to complete the account setup.

Reader

Use this application to view PDF or XPS documents.

Tap **Reader** on the Applications screen.

Tap **Browse**, select a folder and a file, and then tap **Open**.

While viewing a document, open the options bar and select one of the following options:

- **Find:** Search for a text string in the document.
- **Two pages / One page / Continuous:** Change the view mode.
- **Open:** Open a new file.
- **Save as:** Save the document with a different name.
- **More:** Rotate or close the document, or view bookmarks or file information.

Travel & local

Maps

Use this application to pinpoint the location of the device, search for places, or get directions. Tap **Maps** on the Applications screen.



This application may not be available depending on the region or service provider.

Searching for locations

Flick from the right edge of the screen towards the middle of the screen, tap **Search**, and then enter an address.

Once the location is found, open the options bar, and then use the following options:

- **Clear map:** Clear the map.
- **Map style:** Change the view mode.
- **My location:** View current location.

Getting directions for a destination

Open the options bar, tap **Directions**, enter starting and ending locations, and then tap **Search**.

Settings

About Settings

Use this application to configure the device, set application options, and add user accounts. Flick from the right edge of the screen towards the middle of the screen and tap **Settings** → **Change PC settings**.

Personalise

Select images and colours for the lock screen, the Start screen, and your Microsoft account.

- **Lock screen:** Select an image to display when the screen is locked or select applications to display the status and notifications on the lock screen.
- **Start screen:** Select an image and colour for the Start screen.
- **Account picture:** Select an image for your Microsoft account.

Users

Change the settings for user accounts.

Your account

View your account information. To use your Microsoft account, tap **Switch to a Microsoft account**. Tap **Trust this PC** to sync your saved passwords with applications, websites, and networks.

Sign-in options

- **Create a password:** Set an account password to unlock the device. When a password is created, this option changes to **Change your password**.
- **Create a picture password:** Set a picture password to unlock the device.
- **Create a PIN:** Set a PIN to unlock the device.
- **Require a password after the display has been off for:** Set the length of time the device waits before it goes into lock mode when the screen turns off.

Other users

Add other Microsoft accounts to allow others to use the device.

Notifications

Change the settings for notifications from applications.

Notifications

- **Show app notifications:** Set to show notifications from applications.
- **Show app notifications on the lock screen:** Set to show notifications from applications on the lock screen.
- **Play app notification sounds:** Set the device to play notification sounds.

Show notifications from these apps

Set individual applications to use notifications.

Search

Change the settings for the Search feature.

Search history

- **Show the apps that I search for most often at the top:** Set to show the list of applications you search most frequently.
- **Let Windows save my searches as future search suggestions:** Set the device to save the search keywords you enter. The saved keywords appear as suggestions the next time you enter a keyword.
- **Search history in Windows:** Clear the search history by tapping **Delete history**.

Use these apps to search

Set individual applications to be included in your searches.

Share

Change the settings for the Share feature.

Frequent

- **Show the apps that I use most often at the top of the app list:** Set to show the list of applications you use frequently when you share contents on the device.
- **Show a list of how I share most often:** Set to show a list of frequent sharing destinations.
- **Items in list:** Select the number of items to be displayed in the list of frequent sharing destinations.

Use these apps to share

Set individual applications to be included in the list of applications used when sharing contents from the device.

General

Change the general settings for the operating system.

Time

View the current time and date, change the time zone, or set the device to apply summer time automatically.

App switching

- **Allow switching between recent apps:** Set the device to open a list of recent applications when you flick from the left edge of the screen towards the middle of the screen.
- **When I swipe in from the left edge, switch to my most recent app:** Set the device to switch to the applications you used last when you flick inward from the left edge of the screen and then back again. You can delete the history of recent applications by tapping **Delete history**.

Touch keyboard

- **Show text suggestions as I type:** Set the device to predict words according to input and display word suggestions.
- **Add a space after I choose a text suggestion:** Set the device to insert a space after you select a word from the suggestions list.
- **Add a full stop after I double-tap the Spacebar:** Set the device to insert a full stop when you double-tap the space bar.
- **Capitalise the first letter of each sentence:** Set the device to automatically capitalise the first character after a final punctuation mark, such as full stop, question mark, or exclamation mark.
- **Use all uppercase letters when I double-tap Shift key:** Set to switch to caps lock mode when you double-tap the shift key.

- **Play key sounds as I type:** Set the device to emit a sound when you tap the keys on the keyboard.
- **Make the standard keyboard layout available:** Enable or disable the standard Qwerty keyboard.

Spelling

- **Autocorrect misspelt words:** Set the device to automatically correct misspelt words.
- **Highlight misspelt words:** Set the device to automatically highlight misspelt words.

Screen

- **Adjust my screen brightness automatically:** Set to automatically adjust the brightness of the display.

Language

- **Language preferences:** Access the Control panel to adjust the language and keyboard settings of the device.

Available storage

View memory information for your device. To view the size of individual applications, tap **View app sizes**.

Refresh your PC without affecting your files

Refresh the device when it slows down by tapping **Get started**. This will reset PC settings of the device to the factory default values without affecting your personal files or the settings of any installed applications.

Remove everything and reinstall Windows

Refresh the device when it slows down by tapping **Get started**. This will reset settings to the factory default values and delete all data.

Advanced start-up

You can restart the device to access the Windows Startup menu that helps you fix system startup problems or change Windows startup settings. Tap **Restart now** → **Troubleshoot** → **Advanced options** → **Start-up Settings** → **Restart**.

Privacy

Change the settings for privacy options.

Let apps use my location

Set to use the location information in applications.

Let apps use my name and account picture

Set to use your account name and picture in applications.

Help improve Windows Store by sending URLs for the web content that apps use

Set the device to send feedback about how you use Windows mobile products.

Devices

Change the settings for device connection options.

Devices

View the list of other devices or accessories connected to your device. You can add Bluetooth devices or disconnect your device from the connected devices.

Download over metered connections

Set to allow the device to download data over metered network connections.

Wireless

Change the settings to control connections with other devices or networks.

Flight mode

This disables all wireless functions on your device. You can use only non-network services.

Wireless devices

- **WiFi:** Turn the Wi-Fi feature on or off.
- **Bluetooth:** Turn the Bluetooth wireless feature on or off.
- **GNSS:** Activate or deactivate the GPS feature.
- **NFC:** Activate or deactivate the NFC feature to read or write NFC tags that contain information, or share data via NFC.

Ease of Access

Access and change the following settings to improve accessibility to the device.

- **Use high contrast:** Reverse the display colours to improve visibility.
- **Make everything on your screen bigger:** Change the font size in all applications.
- **Pressing Windows + Volume Up will turn on:** Select an application to launch when you press the Windows button and the Volume up button.
- **Show notifications for:** Set the length of time that notifications are shown.
- **Cursor thickness:** Change the cursor thickness in text input fields.

Sync your settings

Select settings to sync with your Microsoft account.

Sync your settings

Set to sync your settings with your Microsoft account.

Settings to sync

Set individual settings categories to sync.

Sync over metered connections

- **Sync settings over metered connections:** Set to allow the device to sync your settings over metered network connections.
- **Sync settings over metered connections even when I'm roaming:** Set to allow the device to sync your settings over metered network connections when you are roaming.

HomeGroup

Join a homegroup on your network to share files with other members. To allow other devices in the same group to access your shared files, turn on the file sharing feature in **Change sharing settings**.

Windows Update

Check for new updates and update device software by tapping **Check for updates now**.

Troubleshooting

Your device displays network or service error messages

- When you are in areas with weak signals or poor reception, you may lose reception. Move to another area and try again.
- You cannot access some options without a subscription. Contact your service provider for more details.

The touch screen responds slowly or improperly

If your device has a touch screen and the touch screen is not responding properly, try the following:

- Remove any protective covers from the touch screen. Protective covers may prevent the device from recognising your inputs and are not recommended for touch screen devices.
- Ensure that your hands are clean and dry when tapping the touch screen.
- Restart your device to clear any temporary software bugs.
- Ensure that your device software is upgraded to the latest version.
- If the touch screen is scratched or damaged, take it to your local Samsung Service Centre.

Your device freezes or has fatal errors

If your device freezes or hangs, you may need to close programs or reset the device to regain functionality. If your device is frozen and unresponsive, press and hold the Power button for 7-10 seconds until the device turns off.

If you want to reset the device without deleting downloaded applications and your personal files, flick from the right edge of the screen towards the middle of the screen and tap **Settings** → **Change PC settings** → **General** → **Refresh your PC without affecting your files**.

If this does not solve the problem, perform a factory data reset. Flick from the right edge of the screen towards the middle of the screen and tap **Settings** → **Change PC settings** → **General** → **Remove everything and reinstall Windows**.

You can also restart your device with the advanced startup option. Flick from the right edge of the screen towards the middle of the screen and tap **Settings** → **Change PC settings** → **General** → **Advanced start-up**.

The device beeps and the battery icon is empty

Your battery is low. Recharge the battery to continue using the device.

The battery does not charge properly

The battery in the device is not user replaceable. If you have problems with the battery or need it replaced, take the device to a Samsung Service Centre.

Your device is hot to the touch

When you use applications that require more power or use applications on your device for an extended period of time, your device may feel hot to the touch. This is normal and should not affect your device's lifespan or performance.

Error messages appear when launching the camera

Your Samsung device must have sufficient available memory and battery power to operate the camera application. If you receive error messages when launching the camera, try the following:

- Charge the battery.
- Free some memory by transferring files to other storage devices or deleting files from your device.
- Restart the device. If you are still having trouble with the camera application after trying these tips, contact a Samsung Service Centre.

Error messages appear when opening music files

Some music files may not play on your Samsung device for a variety of reasons. If you receive error messages when opening music files on your device, try the following:

- Free some memory by transferring files to a computer or deleting files from your device.
- Ensure that the music file is not Digital Rights Management (DRM)-protected. If the file is DRM-protected, ensure that you have the appropriate licence or key to play the file.
- Ensure that your device supports the file type.

Another Bluetooth device is not located

- Ensure that the Bluetooth wireless feature is activated on your device.
- Ensure that the Bluetooth wireless feature is activated on the device you wish to connect to, if necessary.
- Ensure that your device and the other Bluetooth device are within the maximum Bluetooth range (10 m).

If the tips above do not solve the problem, contact a Samsung Service Centre.

A small gap appears around the outside of the device case

- This gap is a necessary manufacturing feature and some minor rocking or vibration of parts may occur.
- Over time, friction between parts may cause this gap to expand slightly.

Some content may differ from your device depending on the region or service provider.

