

**SAMSUNG**



**YP-T9**

# For Your Safety

Read this manual carefully to ensure proper use of the product and to avoid any danger or physical damage.



## WARNING

Failing to heed the product instructions may cause serious injury.

### Product Use

Improper use can result in explosion, fire or electric shock.



**Do not disassemble, repair or modify this product on your own.**



**Do not get the product wet or drop it in water.**

If the product gets wet, do not switch it on. Contact a Service Center.



**Do not place the product in damp, dusty or sooty areas, as it could result in fire or electric shock.**



**Do not leave the player in areas above 35°C(95°F) (such as a sauna or inside a parked car).**

During hot weather, the temperature inside a car may rise up to 80°C(176°F).

To avoid your hearing damage



**Avoid using your player at high volume levels, as it may result in permanent hearing damage.**

**If you experience ringing in your ears while using the earphones, remove the earphones immediately and lower the volume.**

To avoid a risk of traffic accident

**Do not use the earphones while you are driving a bicycle, automobile or motorcycle.**

It can cause a serious accident and furthermore, is prohibited by law in some areas.

Using the earphones while walking, in particular, on a crosswalk, can lead to a serious accident.

**Take care not to tangle the earphone cable around your arms or neighboring objects while driving, working out or walking, as it could result in a car accident or other injuries.**



## CAUTION

Failure to follow all instructions lead to physical injuries or damage to the product.

### Product Use

Take care to avoid product malfunction and physical damage.



When wearing the product around your neck, take care not to exert excessive force on the neck string.

### Management of Important Data



**Be sure to backup important data.**

Please be aware that we claim no responsibility for damage from data loss due to breakdown, repair or other causes.

### Avoid malfunction



Do not cause excessive impact on the product by dropping it. Do not place heavy objects on top of the product.



Prevent any foreign particles or dust from entering into the product.



Always use the accessories provided by or approved by Samsung.



Do not spray water on the product. Never clean the product with chemical substances such as benzene or thinner, as it may cause fire, electric shock or deteriorate the surface.



Do not place the product near magnetic objects, as it may cause a malfunction.

# Contents

For Your Safety .....	2
Contents .....	4

## Chapter 1. Preparation

---

<b>Product Features</b> .....	6
<b>Basic Information</b> .....	7
Components .....	7
Screen Display Information .....	9
Button Functions .....	10
<b>Charging the battery</b> .....	11
<b>Basic Use</b> .....	12

## Chapter 2. Loading Your Desired File

---

<b>Loading Your Desired File</b> .....	17
Installing Samsung Media Studio .....	17
Connecting to your PC .....	18
Adding Folders/Files in Samsung Media Studio .....	20
Transferring Files to the Player with Samsung Media Studio .....	22
<b>Using as a Removable Disk</b> .....	24
<b>Disconnecting from your PC</b> .....	25

## Chapter 3. Multimedia function

---

<b>Listening to Music</b> .....	26
Listening to Music .....	26
Section Repetition .....	29
Creating Playlist Using Samsung Media Studio .....	30
To Play a Playlist .....	32
Using Music menu .....	35
<b>Video</b> .....	38
Video .....	38
Using Video menu .....	41
<b>Photo Viewing</b> .....	42
Photo Viewing .....	42
Using Photo menu .....	44
<b>Text Viewing</b> .....	47
Text Viewing .....	47
Using Text menu .....	48
<b>Listening to FM Radio</b> .....	51
Listening to FM Radio .....	51
Setting a Frequency .....	53
To Delete Presets .....	55
Using FM Radio menu .....	56
<b>Recording</b> .....	57
Recording .....	57
Voice/FM Radio Recording .....	59
<b>Bluetooth</b> .....	60
Using Bluetooth .....	60
Using Bluetooth menu .....	66
<b>Game</b> .....	67
Game .....	67

## **Chapter 4. | Setup**

---

<b>Setting</b> .....	69
Setting Music .....	69
Setting Record .....	71
Setting Time .....	72
Setting Display .....	74
Setting Language .....	75
Setting System .....	76

## **Chapter 5. | Troubleshooting**

---

<b>Troubleshooting</b> .....	78
------------------------------	----

## **Chapter 6. | Appendix**

---

<b>Menu Tree</b> .....	80
<b>Product Specifications</b> .....	81

# Product Features

## High-tech Multimedia Player!

- The player is a top-notch multimedia player featuring photo/text view, movie playback, FM radio, voice recording and Bluetooth.

## Longer Play Time and Shorter Downloading!

- A fully charged player can play up to 30 hours of music, or 6 hours of movie.
- The player supports USB 2.0 capability, much faster than USB 1.1 to enable faster communication with the PC.

## Expansion & Compatibility!

- Supports various file formats including MP3, WMA and Ogg.

## 3D Surround Sound! High-Definition Quality!

- The player has built-in DNSe (Digital Natural Sound engine), Samsung's unique sound technology for richer sound.

## Easy File Browser!

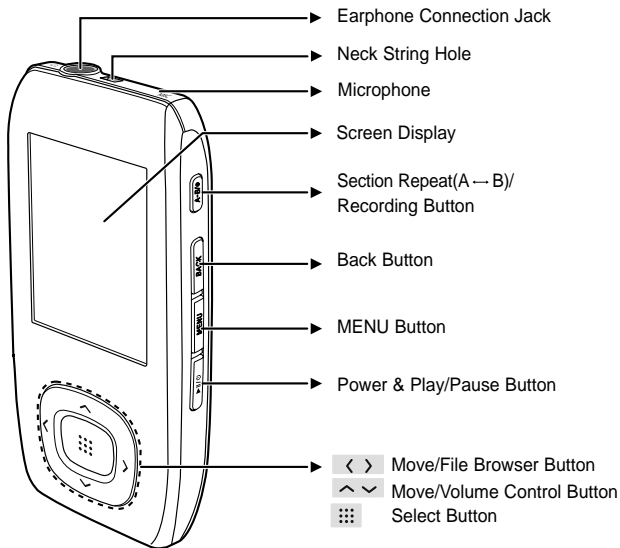
- With user-friendly file browser, it allows you to navigate through the folders without exiting your music experience.

## Ergonomic Design!

- Experience the good sense of grip and easy operation.

# Components

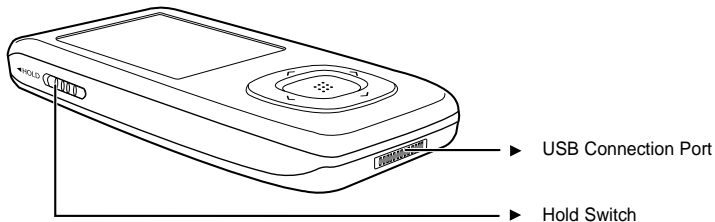
## Front, Right Side and Top



## Components (Continued)

### Bottom and Left Side

---



### Checking the Accessories

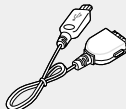
---



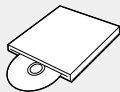
Player



Earphones



USB Cable



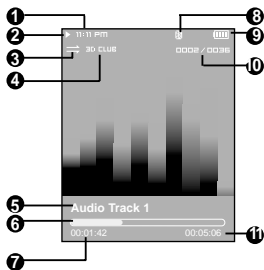
Installation CD

- Design of accessories is subject to change for the purpose of improvement, without notice.



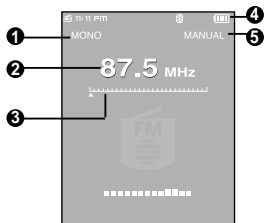
# Screen Display Information

## Music



- 1 Current Time Display
- 2 Playback Display
- 3 Play Mode Display
- 4 Sound Mode Display
- 5 Music Title Display
- 6 Play Status Bar
- 7 Play Time Display
- 8 Bluetooth Display  
\*The Bluetooth feature can be applied only for the appropriate model (YP-T9B, T9JB).
- 9 Battery Status Display
- 10 Current Music Number/  
Total Music Number Display
- 11 Total Play Time Display

## FM Radio









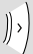



- 1 Mono/Stereo Display
- 2 Frequency Display
- 3 Frequency Location Display
- 4 Battery Display
- 5 Preset/Manual/Add  
Preset/Remove Preset Display



### NOTE

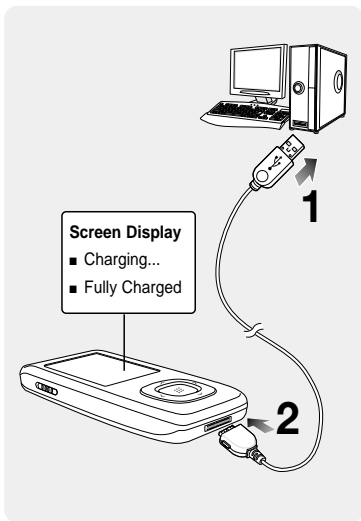
- The screen pictures are for illustration purposes only. The actual screen may differ.

# Button Functions

Buttons	Functions and Use
	<ul style="list-style-type: none"> <li>■ <b>Long press</b> for power on/off.</li> <li>■ <b>Short press</b> for play/pause.</li> </ul>
	<ul style="list-style-type: none"> <li>■ <b>Short press</b> to display the menu screen.</li> </ul>
	<ul style="list-style-type: none"> <li>■ <b>Long press</b> to move to the main menu.</li> <li>■ <b>Short press</b> to return to the previous stage.</li> </ul>
	<ul style="list-style-type: none"> <li>■ <b>Long press</b> to start recording.</li> <li>■ <b>Short press</b> to set section repetition, stop recording or add to/delete from the playlist.</li> </ul>
	<ul style="list-style-type: none"> <li>■ <b>Short press</b> to move to the selected menu/confirm and save your selection.</li> </ul>
	<ul style="list-style-type: none"> <li>■ <b>Long press</b> to quickly scan tracks.</li> <li>■ <b>Short press</b> to move to the previous track or play the current track from the beginning.</li> </ul>
	<ul style="list-style-type: none"> <li>■ <b>Long press</b> to quickly scan tracks.</li> <li>■ <b>Short press</b> to move to next track.</li> </ul>
	<ul style="list-style-type: none"> <li>■ <b>Short press</b> to increase the volume or move to an upper item/menu.</li> </ul>
	<ul style="list-style-type: none"> <li>■ <b>Short press</b> to reduce the volume or move to a lower item/menu.</li> </ul>
	<ul style="list-style-type: none"> <li>■ <b>Push in the direction of the arrow</b> to lock the button functions.</li> </ul>

# Charging the battery

Fully charge the rechargeable battery before using the player for the first time or when it has not been used for a while.



**1** Connect the USB cable to the USB port ( ) on your PC.

**2** Connect the other end of the USB cable to the USB Connection Port on the bottom of the player.

- When connected with the USB cable, it takes about 4 hours for the player to fully charge although this may vary depending on your PC environment.

## Battery Use

- Recharge and store within the temperature range of 5°C~35°C(40°F~95°F).
- Do not overcharge (longer than 12 hours). Excessive charging or discharging may shorten the battery's life.
- Battery life naturally shortens slowly over time as it is a consumable item.



- If you are charging the player while it is connected to your Notebook, make sure the Notebook's battery is also fully charged.

# Basic Use

## Turning the Power On & Off



### Turning the Power On

Press and hold the [▶||/⏻] button

- Power is turned on.

### Turning the Power Off

Press and hold the [▶||/⏻] button

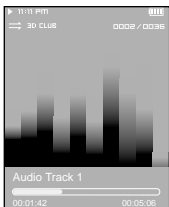
- Power is turned off.



NOTE

- Power is automatically turned off when none of the buttons have been pressed for a preset period of time (Default: 1 minute) in the pause mode. ▶ Page 72

## Playing Music



- 1 Press the [^v] button to select <Music> and then press the [⋮] button.
- 2 Press the [^v<>] button to select the desired music file.
- 3 Press the [⋮] button.
  - The music file will begin playing.



NOTE

- Press the [⋮] button to move to the sub level.
- Press the [BACK] button to move to the previous screen.

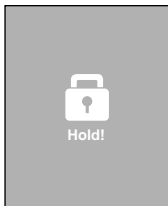
## Volume Control



Press the [ ^ v ] button.

- You will see a volume control icon.
- Press the ^ button to increase the volume or the v button to decrease it.

## Lock Function



In Hold mode, all buttons are disabled. This function is useful when you are walking or jogging.

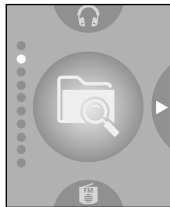
- 1 Push the [HOLD] switch in the direction of the arrow.
- 2 Push the [HOLD] switch in the opposite direction of the arrow to release the Lock function.

# Basic Use (Continued)

## Searching for Files with <File Browser>

---

Search easily for files using the <File Browser> function.



- 1** Press the [ ^ v ] button to select <File Browser>.
- 2** Press the [ ::: ] button.
  - The <File Browser> folder list containing Music, Text, Photo and Video appears.
- 3** Press the [ ^ v ] button to select a folder of your choice.
- 4** Use the [ ::: ] button to move to the file list in the selected folder.
  - Use the [ < ] button to move to the upper step.
- 5** Press the [ ^ v ] button to select a file of your choice.
- 6** Press the [ ::: ] button.
  - The selected file will start playing.

## File Deletion



- 1** Press the [ ^ v ] button to select <File Browser> and then press the [ :::: ] button.
- 2** Press the [ ^ v < > ] button to select the file that you want to delete and press the [MENU] button.
- 3** Press the [ ^ v ] button to select <Delete> and then press the [ :::: ] button.
- 4** Press the [ < > ] button to select <Yes> and then press the [ :::: ] button.
  - The selected file will be deleted.

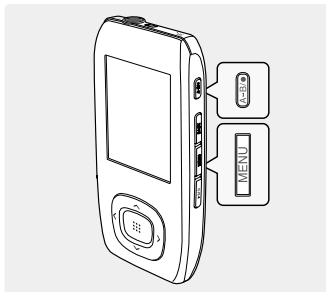


### NOTE

- You can't recover the file once it is deleted. So check if it is the right file to delete.

## Basic Use (Continued)

### Reset Function



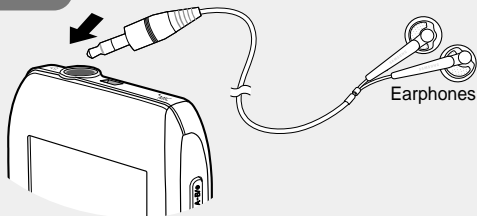
If a product malfunction occurs, you can re-initialize the system.

Press and hold the [MENU] and [A ← B/●] buttons at the same time.

- The system will be initialized.
- Your settings and files will not be affected.

### Earphone Connection

► Top





# Installing Samsung Media Studio

Use Media Studio to transfer music files from your PC to the player.



## If Media Studio is not installed automatically

CAUTION

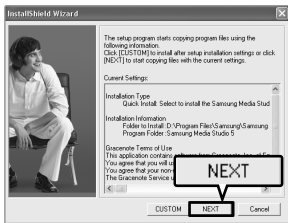
- Install the program on PCs running Windows 2000 or Windows XP after logging on with the Administrator account. Please refer to the PC user manual on how to log on with the Administrator account.

### Before you start!


Insert the installation CD provided with the player into the CD-ROM drive.



**1** Click <Install now>.



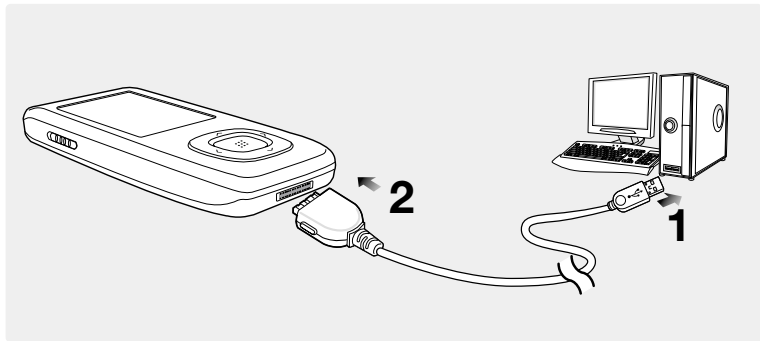
**2** Click <NEXT>.

- Media Studio installation starts.
- An icon  is created on the desktop after installation is complete and Media Studio starts.

# Connecting to your PC

Before you start!

Use the USB Cable provided when connecting the player to your PC.



**1** Connect the USB cable to the USB port (  ) on your PC.

**2** Connect the other end of the USB cable to the USB Connection Port on bottom of the player.

- <USB Connected> appears on the screen display of the player.



CAUTION

- If you connect the player through a USB hub, the connection may be unstable. Please connect the player to the computer directly.

## PC Requirements

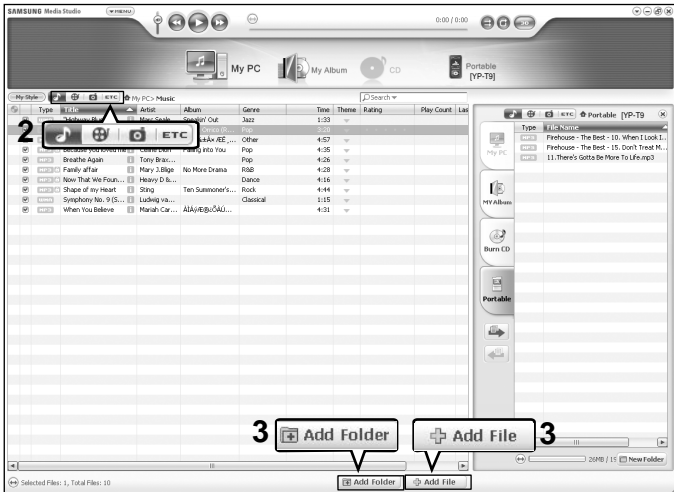
---

The PC system must meet the following minimum specifications:

- Pentium 300MHz or higher
- USB Port 2.0
- Windows 2000/XP
- DirectX 9.0 or higher
- 100MB of free hard disc space
- CD Rom Drive (2X or higher)
- Resolution 1024 X 768 or higher

# Adding Folders/Files in Samsung Media Studio

Media Studio enables you to select and organize files and folders in preparation for transfer to your player.



Please refer to Help for more information on how to use Media Studio.

- Click <MENU> → <Help> → <Help> from the menu on the top of the Media Studio program.





## Before you start!

- Connect the player to your PC.
- Media Studio must be installed on your PC.

# 1 Media Studio will automatically start when the player is connected to your PC.

- If the program does not start automatically, double Click the Media Studio icon on the desktop.

# 2 Click the desired file icon.

- Choose the file type you want to transfer by clicking on one of these icons.
- Click  icon to display music list.
- Click  icon to display video list.
- Click  icon to display photo list
- Click  icon to display etc list. The ETC list includes file types (ex: TXT, XOY, etc) other than music, photo, and video files.

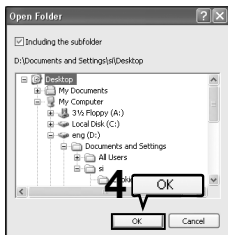
## To add folders

# 3 Click <Add Folder> on the bottom of Media Studio.

- The Open Folder window will appear.

# 4 Select the folder to add and click <OK>.

- The selected folder is added to the list on the left side the Media Studio Screen.



## To add files

# 3 Click <Add File> on the bottom of Media Studio.

- The Open window will appear.

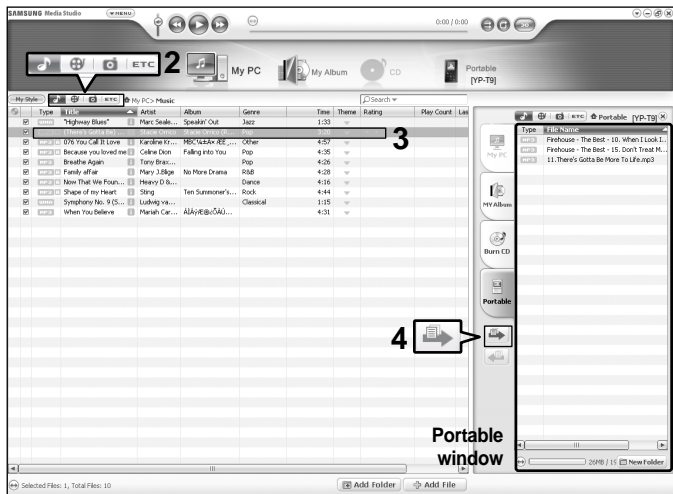
# 4 Select the files to add and click <Open>.

- The selected files are added to the list.



# Transferring Files to the Player with Samsung Media Studio

Perform the following steps to transfer files from your PC to the player.



- Music recognition technology and related data are provided by Gracenote and Gracenote CDDB® Music Recognition Service<sup>SM</sup>.
- CDDB is a registered trademark of Gracenote. The Gracenote logo and logotype, the Gracenote CDDB logo and logotype, and the "Powered by Gracenote CDDB" logo are trademarks of Gracenote. Music Recognition Service and MRS are service marks of Gracenote.





**Before you start!**

- Connect the player to your PC.
- Media Studio must be installed on your PC.

## 1 Media Studio will automatically start when the player is connected to your PC.

- If the program does not start automatically, double click the Media Studio icon on the desktop.

## 2 Click the desired file icon.

- Choose the file type you want to transfer by clicking on one of these icons.
- Click  icon to display music list.
- Click  icon to display video list.
- Click  icon to display photo list
- Click  icon to display etc list. The ETC list includes file types (ex: TXT, XOV, etc) other than music, photo, and video files.

## 3 Select the file to transfer in the left file list.

## 4 Click icon.

- The selected file is transferred to the player.



- Do not disconnect the USB cable during file transfer. This may cause damage to the player or your PC.



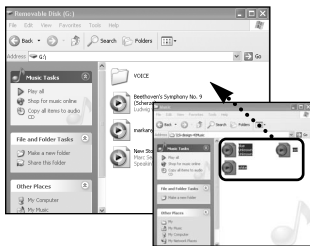
- When transferring a photo or video file to the player using <Media Studio>, it is automatically converted into JPG(photo) or SVI(video) format before transfer. The file size is automatically adjusted, too.

# Using as a Removable Disk

You can use the player as a removable storage device.

## Before you start!

- Connect the player to your PC.



- 1 Open files/folders to transfer from your PC.
- 2 Open <My Computer> → <YP-T9> from the desktop.
- 3 Select the files/folders to transfer from your PC and drag and drop them to a folder of your choice in the <YP-T9>.

- The selected folders or files are transferred to the player.
- Do not drag and drop the files to the <SYSTEM> folder.

## Reconfigure Library

Once files are transferred to the removable disk, it is required to run <MENU> → <Portable> → <Reconfigure Library> in Media Studio.

- Otherwise, transferred files can be found only in <File Browser> and those files will not be listed in <Music> and <Photo> from the main menu.



- The <Transferring Files...> message will appear during file download or upload. Disconnecting the USB cable while <Transferring Files...> is displayed may cause malfunction of the player.
- The order of music files displayed in Windows Explorer may differ from the play order on your player.
- If you transfer a DRM file(charged file) to the removable disk, the file will not be played.



- Before transferring your desired file, check if the file type is supported by this player.
- Video files should be transferred to the player using <Media Studio>.

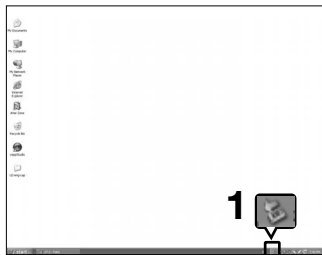
### ■ What is DRM?


DRM (Digital Rights Management) is a technology and service to prevent the illegal use of digital contents and protect the profit and rights of copyright holders. DRM files are charged music files applied with the illegal copy protection technology of legally purchased MP3 music.



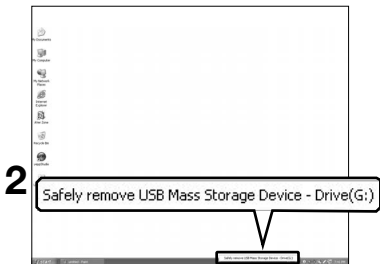
# Disconnecting from your PC

Follow the steps below to prevent damage to the player and data when disconnecting from your PC.



**1** Place the mouse cursor on top of the  icon on the taskbar at the bottom right corner of the desktop and click the left mouse button.

**2** Click <Safely Remove USB Mass Storage Device Drive> message.



**3** Disconnect the player from your PC.



CAUTION

- Do not disconnect the player from the PC during file transfer. This may cause damage to data and the player.
- You cannot remove the player while files within the player are being played on your PC. Please retry after playback is finished.

# Listening to Music

**Before you start!**

Connect the earphones, then turn on the player, and check the battery.


**1,2,3**

- 1** Press the [ ^ v ] button to select <Music> and then press the [ ⋮ ] button.
- 2** Press the [ ^ v ] button to select the desired list and then press the [ ⋮ ] button.
- 3** Press the [ ^ v < > ] button to select the file to play and then press the [ ⋮ ] button.

- The music file starts to play.

- <Now Playing> : You can listen to the last played music or recording file.
- <Artists> : To play by artist
- <Albums> : To play by album
- <Tracks> : To play in numeric or alphabetical order
- <Genres> : To play by genre
- <Playlists> : To play by Playlist


**NOTE**

- The music files compatible with the player are MP3, WMA and Ogg.
- MP1 or MP2 files which only have a changed extension to MP3, may not play on the player.
- A file without an ID3 Tag (Unknown) is displayed as [Unknown].
- If you press the [ ⋮ ] button in Music mode, the "S" mark appears on the screen and the Street mode is set to On. Pressing the [ ⋮ ] again to disappear "S" and set off the Street mode. ► page70

## | To Pause

---

- 1 Press the [ ▶||⏸ ] button while the music is playing.**
  - The music playback will be paused.
- 2 Press the [ ▶||⏸ ] button again.**
  - The music will play from the point where it stopped.

## | To search within a track

---

- 1 Press and hold the [ < > ] button while the selected track is playing.**
  - It searches to the beginning or the end of the track.
- 2 Release the button at the point you wish to start.**
  - It starts playing from the point you release the button.

## Listening to Music (Continued)

### To Play from the beginning of the current track

---

**Press the [ < ] button after 5 seconds of play.**

- The current track starts playing from the beginning.

### To play the previous/next track

---

**Press the [ < ] button within 5 seconds of play.**

- The previous track will start playing.

**Press the [ > ] button.**

- The next track will start playing.



- When playing VBR files, the previous track may not play even if you press the [ < ] button within 5 seconds of the play.
-

# Section Repetition

This function enables you to listen to specific parts of a track repeatedly. Recommended for language learning.



## To set a section for repetition

- 1 Play a file of your choice.
- 2 Press the [A → B/●] button at the beginning of the section you want to repeat.
  - The starting point is set and <A → > will appear in the screen display window.
- 3 Press the [A → B/●] button again to set the ending of the section you want to repeat.
  - <A → B> will appear on the screen and the specified section starts to play repeatedly.

## To cancel the section repetition

- Press the [A → B/●] button again during Section Repeat.
- Section Repeat will be canceled.

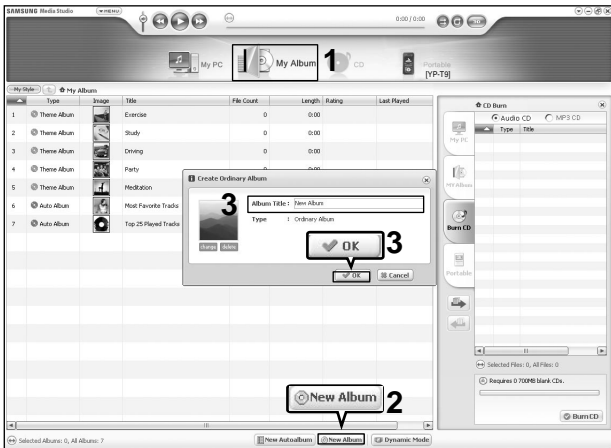


### NOTE

- You can set the start and end points of the section repetition only within a single file.

# Creating Playlist Using Samsung Media Studio

A playlist is a list of your favorite songs.



**1** Click <My Album> on the top of Media Studio.

- The <My Album> window appears.

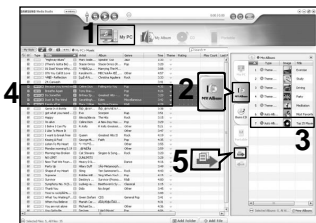
**2** Click <New Album> on the bottom.

- The Creation window appears.

**3** Type in the album title and click <OK>.


- A new album (playlist) will be created and stored in the My Album section of Media Studio.

## Adding Music files to a Playlist

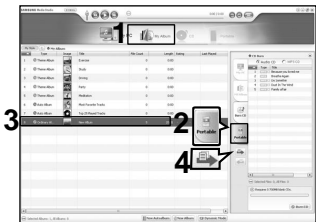



NOTE

- A maximum of 999 playlists transferred to the player can be played.

- 1 Click <My PC> on the top of Media Studio.
  - The My PC window appears.
- 2 Click <My Album> in the right corner of the window.
  - The My Album window appears.
- 3 Double click on a desired album in the right window.
- 4 Select files that you want to transfer in the <My PC> window.
- 5 Click  icon.
  - The selected files will be added to the album (playlist).

## Exporting a Playlist to your Player Using Media Studio

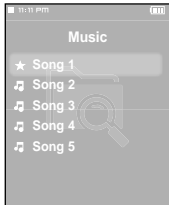


- 1 Click <My Album> on the top of Media Studio.
  - The My Album window appears.
- 2 Click <Portable> in the right corner of the window.
  - The Portable window appears.
- 3 Select a desired album in the <My Album> list.
- 4 Click  icon.
  - The selected album will be transferred to the player and stored in <File Browser> → <Playlists>.

# To Play a Playlist

You can easily listen to your favorite music by adding it to a Playlist.

## To make your own Playlist



### How To 1

- 1** Press the [ ^ v ] button to select <File Browser> and then press the [ ::: ] button.
- 2** Press the [ ^ v ] button to select <Music> and then press the [ ::: ] button.
  - The file list appears.
- 3** Press the [ ^ v < > ] button to select a file to add to the playlist and then press the [ A → B / ● ] button.
  - Next to the selected file, the mark ★ appears and the file is included in <File Browser> → <Playlists> → <Favorites>.

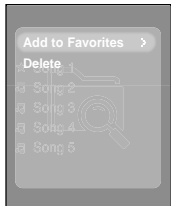


#### NOTE

- You can add up to 100 music files to <Favorites>.
- If you want to remove a file from the <Favorites>, select a file marked with ★ and then press the [ A → B / ● ] button. Alternately, you can press the [ MENU ] button to select <Delete from Favorites> and press the [ ::: ] button.
- For more information, see pages 30–31 to see how to create and transfer playlists to your player.



## To make your own Playlist (Continued)



### How To 2

- 1** Press the [ ^ v ] button to select <File Browser> and then press the [ :::: ] button.
- 2** Press the [ ^ v ] button to select <Music> and then press the [ :::: ] button.
  - The file list appears.
- 3** Press the [ ^ v < > ] buttons to select a file to add to the playlist and then press the [MENU] button.
- 4** Press the [ ^ v ] button to select <Add to Favorites> and then press the [ :::: ] button.
  - Next to the selected file, the mark ★ appears and the file is included in <File Browser> → <Playlists> → <Favorites>.



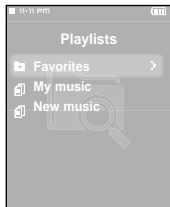
#### NOTE

- If you want to remove a file from the <Favorites>, select a file marked with ★ and then press the [A ← B/ ●] button. Alternately, you can press the [MENU] button to select <Delete from Favorites> and press the [ :::: ] button.

# To Play a Playlist (Continued)

## To Play a Playlist

---

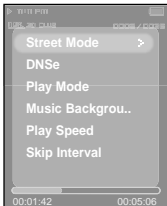


- 1** Press the [ ^ v ] button to select <File Browser> and then press the [ :::: ] button.
- 2** Press the [ ^ v ] button to select <Playlists> and then press the [ :::: ] button.
  - The Playlist(s) will appear.
- 3** Press the [ ^ v ] button to select the playlist of your choice, then press the [ :::: ] button.
  - The music files saved in the selected Playlist will appear.
- 4** Press the [ ^ v ] button to select the file to play and then press the [ :::: ] button.
  - The music file will start playing.

# Using Music menu

## To select Street mode

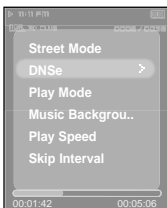
This allows you to enjoy the music outdoors as clearly as indoors.



- 1** Press the [MENU] button when you are in the music playback mode.
- 2** Press the [ ^ v ] button to select <Street Mode> and then press the [ :::: ] button.
- 3** Press the [ ^ v ] button to select the desired mode and then press the [ :::: ] button.
  - Select <On>.

## To select 3D surround sound (DNSe)

You can listen to the music with 3D surround sound.

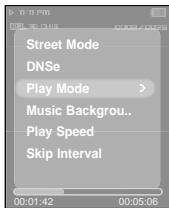


- 1** Press the [MENU] button when you are in the music playback mode.
- 2** Press the [ ^ v ] button to select <DNSe> and then press the [ :::: ] button.
- 3** Press the [ ^ v ] button to select the desired mode and then press the [ :::: ] button.
  - Select either <3D-User> <3D-Studio> <3D-Stage> <3D-Club> <Normal> <Rock> <House> <Dance> <Jazz> <Ballad> <Rhythm & Blues> <Classical> or <User EQ>.

To exit the menu, press the [MENU] button.

# Using Music menu (Continued)

## To select Play mode (Repeat)

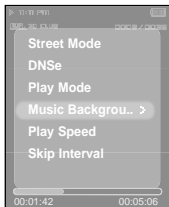


- 1 Press the [MENU] button when you are in the music playback mode.
- 2 Press the [ ^ v ] button to select <Play Mode> and then press the [ ::: ] button.
- 3 Press the [ ^ v ] button to select the desired mode and then press the [ ::: ] button.

- Select either <Normal> <Repeat> <Repeat One> or <Shuffle>.
- <Normal> : To play all the tracks in order one time.
- <Repeat> : To repeat the current folder.
- <Repeat One> : To repeat one file.
- <Shuffle> : To play files at random.

## To select a background image for Music mode

You can set a background image for Music mode.



- 1 Press the [MENU] button when you are in the music playback mode.
- 2 Press the [ ^ v ] button to select <Music Background> and then press the [ ::: ] button.
- 3 Press the [ ^ v ] button to select the desired background image and then press the [ ::: ] button.

- Select either <FLASH1> <FLASH2> <FLASH3> <Album Cover> <Photo> or <Auto>.
- Selecting <Auto> will change the background image by picking one from <FLASH1> to <FLASH3> each time a different file is played.

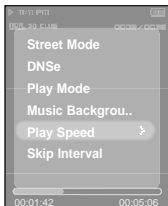


### NOTE

- If there is an image contained in the tag information of a music file, it will be displayed as a background image when you have selected <Album Cover>. <Album Cover> supports only less than 200 pixel (horizontal) x 200 pixel (vertical) in size.

## To select the play speed

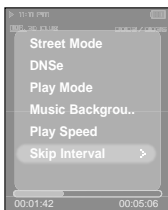
You can select the play speed either faster or lower.



- 1 Press the [MENU] button when you are in the music playback mode.
- 2 Press the [ ^ v ] button to select <Play Speed> and then press the [ ::: ] button.
- 3 Press the [ ^ v ] button to select the play speed and then press the [ ::: ] button.
  - Select either <-3> <-2> <-1> <0>(Normal) <+1> <+2> or <+3>.
  - The larger the number, the faster the speed of play.

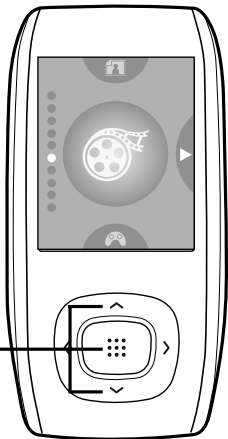
## To set the skip interval

You can set the playback interval when you press the [ < > ] button during playback.



- 1 Press the [MENU] button when you are in the music playback mode.
- 2 Press the [ ^ v ] button to select <Skip Interval> and then press the [ ::: ] button.
- 3 Press the [ ^ v ] button to select the desired skip interval and then press the [ ::: ] button.
  - Select either <1track> <3sec> <5sec> <7sec> <10sec> <30sec> or <1min>.

**Before you start!** Connect the earphones, then turn on the player, and check the battery.



**1,2**

**1** Press the [ ^ v ] button to select <Video> and then press the [ ::: ] button.

**2** Press the [ ^ v ] button to select the desired video clip and then press the [ ::: ] button.

- The selected video file starts to play.

### To stop playing the video file

**Press the [ ▶||/⏪ ] button in Video mode.**

- Each time you press the [ ▶||/⏪ ] button, the player stops playing the video file or resumes playback.



**NOTE**

- When transferring a video file to the player using <Media Studio>, it is automatically converted into SVI format before transfer. The file size is automatically adjusted, too.

## Video Information Display

Press the [⋮] button in Video mode.

- Information on the current video appears. Press the [⋮] button again to disappear the information.



- 1 Play/Pause Indicator
- 2 File Name
- 3 Play Position Indicator
- 4 Current Play Time Indicator
- 5 Volume Level Indicator
- 6 Full play time for the current video

## Video (Continued)

### To move to a certain position of the current video file

---



**1** In a horizontal view, press and hold the [ < > ] button.

- This enables you to scroll through the current video file.

**2** Release the button when you have moved to the desired position.

- The video starts playing from the position.

### To play the previous/next video file

---



Press the [ < ] button within 5 seconds after the current video started playing.

- This will return to the previous movie.

Press the [ > ] button.

- This will move to the next movie.



# Using Video menu

## To set a bookmark



Press the [A ↔ B/●] button at the desired scene.

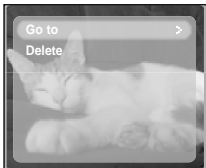
- The currently played/stopped point is set to a bookmark.



NOTE

- You can set a maximum of 20 bookmarks.

## To Move to/remove the bookmark



**1** Press the [MENU] button in Video mode.

- The Bookmark menu appears.

**2** Press the [⋮] button.

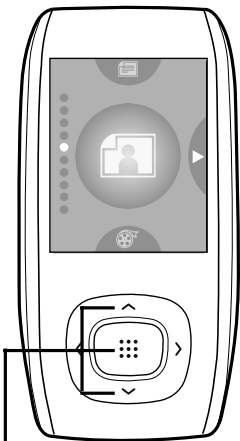
**3** Press the [^ ∨] button to select <Go to> or <Delete> and press the [⋮] button.

- When you selected <Go To> then it will move to the selected bookmark and <Delete> will remove the selected bookmark from the video file.

# Photo Viewing

**Before you start!**

Connect the earphones, then turn on the player, and check the battery.

**1,2**

**1** Press the [ ^ v ] button to select <Photo> and then press the [ ::: ] button.

- The photo preview window appears.

**2** Press the [ ^ v ] button to select the desired photo and then press the [ ::: ] button.

- The selected photo is displayed.

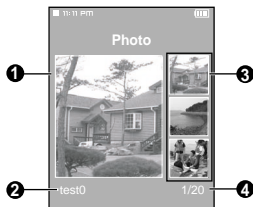
**NOTE**

- When transferring a photo file to the player using <Media Studio>, it is automatically converted into JPG format before transfer. The file size is automatically adjusted, too.
- You can also use the <File Browser> to search for a photo file. ▶ page 14
- You can keep listening to music even if you select <Photo> to view a photo.

## To move to the previous/next photo

Press the [ < > ] button while viewing a photo or press the [ ^ v ] button in preview mode to display the previous or next photo.

## Photo Display Window

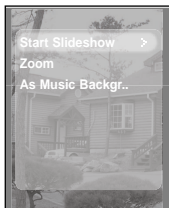


- 1 Preview Pane
- 2 File Name
- 3 Thumbnails
- 4 The current file number/total number of photos

# Using Photo menu

## Slideshow Viewing

---



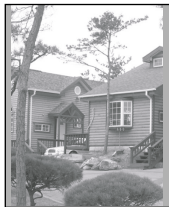
**1** Press the [MENU] while viewing a photo

**2** Press the [ ^ v ] button to select <Start Slideshow> and then press the [ ::: ] button.

- The slideshow will start.

## To stop the slideshow

---



Press the [ ::: ] button in Slideshow mode.

- This will stop the slideshow.

## Photo Enlarging



- 1** Press the [MENU] while viewing a photo
- 2** Press the [ ^ v ] button to select <Zoom> and then press the [ ::: ] button.
  - The Zoom Setting menu appears.
- 3** Press the [ ^ v ] button to select the desired scale factor and then press the [ ::: ] button.
  - You can select either <100%> <200%> or <400%>.
- 4** Press the [ ^ v < > ] to move to the portion of the photo to magnify.
- 5** To cancel the magnification, select <100%> from the Zoom options and then press the [ ::: ] button.
  - This returns to the original size.

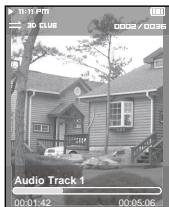
**NOTE**

- Press the [ ::: ] button in the Photo Viewing mode to display the Zoom Setting menu.

# Using Photo menu (Continued)

## To set the photo as a music background image

---



- 1** Select a photo file to set as a background image.
- 2** Press the [MENU] while viewing the photo.
- 3** Press the [ ^ v ] button to select <As Music Background> and then press the [ :::: ] button.
  - The Music Background Image Setting menu appears.
- 4** Press the [ < > ] button to select <Yes> and then press the [ :::: ] button.
  - The selected photo file is set to a background image for music.

**NOTE**

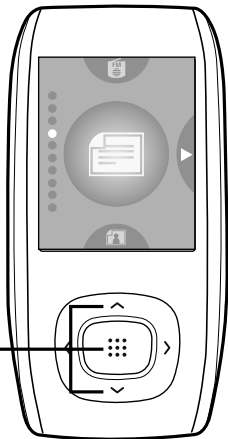
- Press the [A ↔ B/•] button while viewing a photo to display the Music Background Setting menu.
-

# Text Viewing

You can read a novel or see the manuscript text of a news story or soap opera while listening to music.

## Before you start!

Turn on the player, and check the battery.



1,2

**1** Press the [ ^ v ] button to select <Text> and then press the [ ⋮ ] button.

**2** Press the [ ^ v ] button to select Text and then press the [ ⋮ ] button.

- You will see the text on the screen.

## To scroll the text by the line

Press the [ < > ] button.

- Once you set <Scroll By> → <Page> in Text mode, you can move to the previous / next page of the text file.
- Once you set <Scroll By> → <Line> in Text mode, you can move to the previous / next line of the text file. Press and hold the [ < > ] button to move up or down faster through the file.

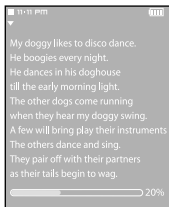


### NOTE

- You can also use the <File Browser> to search for a text file. ► page 14
- This product supports the TXT file format in Text mode.
- You can keep listening to music even if you select <Text>.
- Press the [ ▶||⊞ ] button if you want to play a music while viewing text. Press the [ ▶||⊞ ] button again to stop playing the music.

# Using Text menu

## To set a bookmark



Press the [A ↔ B/●] button while viewing a text.

- The current text screen is set to a bookmark with the ▼ symbol displayed on the top left corner.
- The bookmark can be deleted by pressing the [A ↔ B/●] button in the bookmarked page.



### NOTE

- You can set a maximum of 20 bookmarks.

## To move to/remove the bookmark



**1** Press the [MENU] button while viewing a text.

**2** Press the [ ^ ∨ ] button to select <Bookmark> and then press the [ ⋮ ] button.

- The Bookmark menu appears.

**3** Press the [ ^ ∨ ] button to select <Go to> or <Delete> and then press the [ ⋮ ] button.

- When you selected <Go To> then it will move to the selected bookmark and <Delete> will remove the selected bookmark from the text file.



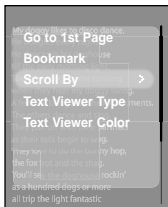
## To move to the first page

You can see the text file from the beginning.



- 1** Press the [MENU] button while viewing a text.
- 2** Press the [ ^ v ] button to select <Go to 1st Page> and then press the [ :::: ] button.
  - The Confirmation window will appear.
- 3** Press the [ < > ] button to select <Yes> and press the [ :::: ] button.
  - This will move to the first page of the text file.

## To set the scroll option



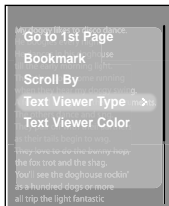
- 1** Press the [MENU] button while viewing a text.
- 2** Press the [ ^ v ] button to select <Scroll By> and then press the [ :::: ] button.
  - The Scroll option menu appears.
- 3** Press the [ ^ v ] button to select the desired option and then press the [ :::: ] button.
  - You can select either <Page> or <Line>.
  - <Page>: Use the [ < > ] button to scroll through the file by the page.
  - <Line>: Use the [ < > ] button to scroll through the file by the line.



- You can press the [ :::: ] button to change the scroll option in Text View mode.

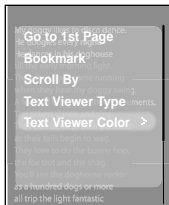
## Using Text menu (Continued)

### To set the text viewer type



- 1 Press the [MENU] button while viewing a text.
- 2 Press the [ ^ v ] button to select <Text Viewer Type> and then press the [ ::: ] button.
  - The Text Viewer Type menu appears.
- 3 Press the [ ^ v ] button to select the desired text viewer type.
  - You can select either <Vertical> or <Horizontal>.

### To set the text viewer color



- 1 Press the [MENU] button while viewing a text.
- 2 Press the [ ^ v ] button to select <Text Viewer Color> and then press the [ ::: ] button.
  - The Text Viewer Color menu appears.
- 3 Press the [ ^ v ] button to select the desired text viewer color.
  - Select either <Auto> <Blue> <Green> <Orange> <Pink> or <Purple>.
  - Selecting <Auto> will set the viewer color to the same as the main menu.

# Listening to FM Radio

## Before you start!

Connect the earphones, then turn on the player, and check the battery.



Press the [ ^ v ] button to select <FM Radio> and then press the [ ⋮ ] button.

- FM radio reception will start.

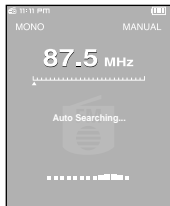
## To use Mute function

Press [ ▶||⏏ ] button during listening to FM radio.

- Sound is muted.
- Press [ ▶||⏏ ] button once again to sound back.

# Listening to FM Radio (Continued)

## To automatically search for frequencies



**1** Press the [ **⋮** ] button to select <MANUAL>.

- You will see <MANUAL> in the top right corner.

**2** Press and hold the [ < > ] button and then release.

- The frequency nearest from the point the button is released will be searched.



NOTE

- In <PRESET> mode, press [MENU] and use the [ ^ v ] button to select <Go to Manual Mode> and press the [ **⋮** ] button. You will switch to <MANUAL> mode.
- In <MANUAL> mode, press [MENU] and use the [ ^ v ] button to select <Go to Preset Mode> and press the [ **⋮** ] button. You will switch to <PRESET> mode.

## To manually search for frequencies



**1** Press the [ **⋮** ] button to select <MANUAL>.

- You will see <MANUAL> in the top right corner.

**2** Press the [ < > ] button.

- Moves to frequencies whenever the button is pressed.



- Always connect your earphones to the player when searching or setting frequencies. The earphones are used as antennas to receive FM radio reception.
- In poor reception areas, the player could not scan for any frequency available.

# Setting a Frequency



## To automatically set frequencies

- 1 Press the [MENU] button in FM Radio mode.
- 2 Press the [ ^ v ] button to select <Auto Preset> and then press the [ ::: ] button.
  - The Auto Preset Confirm window will appear.
- 3 Press the [ < > ] button to select <Yes> and then press the [ ::: ] button.
  - You will see the <Auto Preset> window that allows you to set up to 30 frequencies.

## To cancel during setting

To cancel setting during <Auto Preset> setting, press the [ ::: ] button.

- The auto preset setting is canceled and frequencies set up to then are stored.

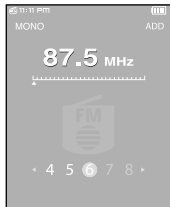


NOTE

- To set <Auto Preset> again after setting preset, existing frequencies are deleted entirely and you can reset from start.

# Setting a Frequency (Continued)

## To manually set frequencies



- 1** Press the [ **⋮** ] button to select <MANUAL>.
  - You will see <MANUAL> in the top right corner.
- 2** Press the [ < > ] button to select the desired frequency to set in preset.
- 3** Press the [ **A** ↔ **B/●** ] button.
  - <ADD> blinks before the preset number appears.
- 4** Press the [ < > ] button to select the desired preset number and press the [ **⋮** ] button.
  - The selected frequency is set as a preset number.


**NOTE**

- You can set the preset frequency by pressing [MENU] to select <Add to Preset> in <MANUAL> mode.
- If you set an identical frequency, you will see <Same frequency exists. Save?>. Press the [ < > ] button to select <Yes> or <No> and press the [ **⋮** ] button.

## To search for frequencies in PRESET mode



- 1** Press the [ **⋮** ] button to select <PRESET>.
  - You will see <PRESET> in the top right corner.
- 2** Press the [ < > ] button.
  - The preset number is selected and you can listen to the stored radio frequency.


**NOTE**

- If you didn't set a preset frequency, you will see <No preset> and couldn't switch to <PRESET> mode.

# To Delete Presets

**Before you start!** ■ Follow the steps below to delete frequencies while listening to FM radio.



- 1** Press the [ **⋮** ] button to select <PRESET>.
  - You will see <PRESET> in the top right corner.
- 2** Press the [ **A ← B/•** ] button.
  - <DELETE> blinks.
- 3** Press the [ **< >** ] button to select the frequency that you want to remove from the PRESET list and press the [ **⋮** ] button.
  - The Delete Preset window will appear.
- 4** Press the [ **< >** ] button to select <Yes> and press the [ **⋮** ] button.
  - The selected preset number will be deleted.
  - If you don't want to delete the preset number, select <NO>.



NOTE

- You can remove the preset frequency by pressing [MENU] to select <Delete Preset> in <PRESET> mode.

# Using FM Radio menu

## To set FM region



- 1** Press the [MENU] button in FM Radio mode.
- 2** Press the [ ^ v ] button to select <FM Region> and then press the [ ::: ] button.
  - The FM Region menu appears.
- 3** Press the [ ^ v ] button to select the FM Region and then press the [ ::: ] button.
  - You can select from <Korea/US> <Japan> <Other Countries>.



### NOTE

- Frequency range by region
  - Korea/US: Search for FM frequencies in 100 kHz increments between 87.5 MHz~108.0 MHz.
  - Japan: Search for FM frequencies in 100 kHz increments between 76.0 MHz~108.0 MHz.
  - Other Countries: Search for FM frequencies in 50 kHz increments between 87.50 MHz~108.00 MHz.
- FM region can be deleted or changed according to the target region of the player.
- If you change the FM region, the previously stored radio frequencies are removed.

## To set FM sensitivity



- 1** Press the [MENU] button in FM Radio mode.
- 2** Press the [ ^ v ] button to select <FM Sensitivity> and then press the [ ::: ] button.
  - The FM Sensitivity menu appears.
- 3** Press the [ ^ v ] button to select the search level and then press the [ ::: ] button.
  - You can select from <High> <Middle> and <Low>.
  - The higher FM Sensitivity is, the more frequencies can be received.



# Recording



## File names during recording

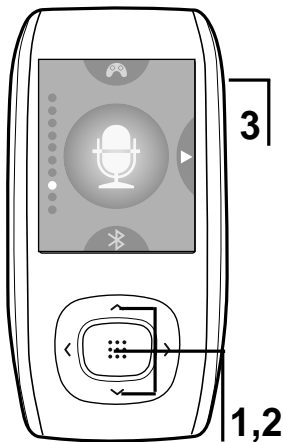
- 1** In recording, a recording file name is automatically specified in such as “Xmddhmmss”. Where X indicates the recording type, mm for a month, dd for a date, mm for minutes and ss indicates seconds.
- 2** The type of recording is as follows;
  - Voice - V
  - Radio – F (FM)
- 3** For instance, the file name “V0911103020” indicates a voice recording was made 10 o'clock 30 minutes 20 seconds on September 11th.



NOTE

- To listen to saved recording files, use the <File Browser> function. ▶ Page 14
- For more information on recording, see the recording setting section on page 71.
- You can set or store a maximum of 999 files for each of voice and FM radio recording.

# Recording (Continued)



**1** Press the [ ^ v ] button to select <Record> and then press the [ :::: ] button.

- Then, press the [MENU] button and use the [ ^ v ] and [ :::: ] buttons to set your recording options.

**2** Press the [ ^ v ] button to select the desired recording mode and press the [ :::: ] button.

- The appropriate window appears.

**3** Press the [ A ← B/● ] button.

- Recording is started with displaying the file name to save.

- <Record Voice>: you can make a voice recording.
- <Record FM Radio>: you can record the FM radio broadcasting that you listened to the last time. You can use the [ < > ] button to select a desired frequency.
- <Recorded Files>: you can listen to voice recording and FM radio recording.

## To stop recording

**1** Press the [ A ← B/● ] button while in recording.

- You will see a message that prompts you to confirm your choice.

**2** Press the [ < > ] button to select <Yes> or <No> and press the [ :::: ] button.

- <Yes> will play the just recorded file.
- <No> will not play the just recorded file.

**3** Press the [ < > ] button to select <Yes> and press the [ :::: ] button.

- The recorded file is stored in the <File Browser> → <Recorded>.

# Voice/FM Radio Recording



## To make a voice recording

You can make voice recording at any time while using different functions.

Press and hold the [A ← B/ ●] button.

- Recording is started with displaying the file name to save.

## To record FM radio broadcasting

You can record FM radio broadcasting at any time while listening to the radio.

In FM Radio mode, press and hold the [A ← B/ ●] button.

- An automatically created file name appears and the recording starts.



NOTE

- Do not place the microphone too close or too far away during recording, as this can affect the recording quality.
- Voice recording does not perform properly when the battery is low.
- You can make a voice recording for about 69 hours (based on 32Kbps, 1GB)

## Using Bluetooth

Register a Bluetooth-compliant stereo headset with your player before you can configure the wireless connection. When done, you can listen to the music through the Bluetooth headset.

(The Bluetooth feature can be applied only for the appropriate model (YP-T9B, T9JB))

### What is Bluetooth?

**Bluetooth is a computing and telecommunications industry specification that describes how mobile phones, computers and PDAs can easily interconnect with each other and with home and business phones and computers using a short wireless connection.**

■ **The Bluetooth device can cause a noise or malfunction, depending on the use conditions.**

- Electrical interference from a physical contact on the product, for instance, if you take the product on the one hand and wear the stereo headset.
- From a physical contact on the transmitter or receiver of the product or the stereo headset
- Electrical variation from electrical jamming by the wall, corner or office partitioning
- Electrical interference from the same frequency-band devices including medical equipment, microwave oven and wireless LAN.

■ **The longer the distance between the product and the stereo headset is, the quality will be deteriorated in proportion and if the distance exceeds a certain range, the wireless networking is disconnected.**

■ **When pairing the Bluetooth device with the product, make it within a short distance as possible.**

■ **You are not recommended to use text and photo view modes while listening to the music with the headset. Otherwise, it can cause a delayed response of the button operation and interference with the Bluetooth communications.**

■ **In poor reception-sensitivity areas such as inside the lift or under the ground, the Bluetooth connection may not work properly.**

■ **A file at lower than 32 kHz may not be played, depending on the specification of the stereo headset.**

### Bluetooth Specification

The performance of a Bluetooth device can vary, depending on the specification. This product is compliant with the standard Bluetooth specifications.

- **Specifications for certain purposes:** In general, the transmission output is great, causing less reduction of the signal strength but requiring more power from the battery.
- **Standard Specifications:** The transmission output is comparatively low, which causes more reduction of the signal strength but minimizes the power consumption to increase the useful time.

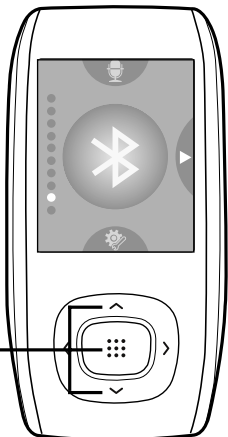
**NOTE**

- When not in use, set the <Bluetooth Mode> to <OFF>. If you stay in <ON> for <Bluetooth Mode>, the useful time of the battery is reduced.

# Using Bluetooth (Continued)

## Before you start!

- Ensure that the Bluetooth device to connect is ready for pairing. (Refer to the product's documentation of the device.)



1,2,3

## Registering the Stereo Headset

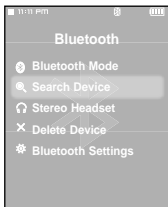
(simply register it only once)

- 1** Press the [ ^ v ] button to select <Bluetooth> and then press the [ ⋮ ] button.
- 2** Press the [ ^ v ] button to select <Bluetooth Mode> and then press the [ ⋮ ] button.
- 3** Press the [ ^ v ] button to select <On> and then press the [ ⋮ ] button.



### NOTE

- You can use the Bluetooth connection for listening to the music only. Other modes including FM radio, video or game do not support the Bluetooth functionality.
- The maximum distance that enables wireless connection between the product and a stereo headset or hands-free device is 10m. The connection becomes automatically cut off if the distance is out of this range. The sound quality will be deteriorated in places of obstacles such as walls or doors even within this range.



#### 4 Set the stereo headset to the appropriate mode for registration.

- To set the headset ready for the pairing mode, refer to the product's documentation.

#### 5 Press the [ ^ v ] button to select <Search Device> and then press the [ :::] button.

#### 6 Press the [ ^ v ] button to select a device to register, and then press the [ :::] button.

- The Password Input Window will appear.

#### 7 Press the [ ^ v < > ] button to enter the password for the stereo headset.

- For setting the password, refer to the product's documentation.

#### 8 Press the [ > ] button to select <OK> and then press the [ :::] button.

- The headset will be registered.



NOTE

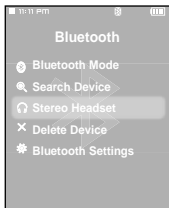
#### Bluetooth-compliant Headsets

Company	Model	Company	Model
i.TECH	Blueband	SAMSUNG	SBH100
Plantronics	PULSAR 590A	Jabra	BT620s
MOTOROLA	HT820		

- Use only the Bluetooth-certified stereo headset. The mono hands-free headset is not supported.

# Using Bluetooth (Continued)

## Connecting the registered stereo headset



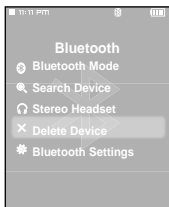
- 1** Press the [ ^ v ] button to select <Bluetooth> and then press the [ ::: ] button.
- 2** Press the [ ^ v ] button to select <Stereo Headset> and then press the [ ::: ] button.
- 3** Press the [ ^ v ] button to select a stereo headset to connect, and then press the [ ::: ] button.
  - The connection is completed.
- 4** Play a file of your choice.
  - You can listen to the music using a stereo headset.



### NOTE

- If you can't find the desired headset to connect, register it first.
- If you turn off the player or the headset, and then turn it on, the bluetooth communication may be disconnected. If you want to listen to the music again using the stereo headset, repeat the instructions above.

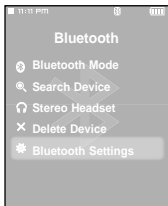
## To delete a Device



- 1** Press the [ ^ v ] button to select <Bluetooth> and then press the [ ::: ] button.
- 2** Press the [ ^ v ] button to select the <Delete Device> and then press the [ ::: ] button.
  - You will see the list of the registered devices.
- 3** Press the [ ^ v ] button to select the device to delete, and then press the [ ::: ] button.
  - If you want to delete all of the registered devices, select <Delete All>.
- 4** Press the [ < > ] button to select <Yes> and then press the [ ::: ] button.
  - The selected device will be deleted.



## To set Bluetooth



- 1 Press the [ ^ v ] button to select <Bluetooth> and then press the [ ::: ] button.
- 2 Press the [ ^ v ] button to select <Bluetooth Settings> and then press the [ ::: ] button.
- 3 Use the [ ^ v < > ] and [ ::: ] buttons to set the desired functions

- <Discover Option> : You can set to enable or disable a Bluetooth cellular phone to detect this player when it searches for a Bluetooth device. Select from <Discoverable> and <Non-Discoverable>.
- <Search Timeout> : You can select the scanning time period for a new device. Select one from <10sec>, <20sec>, <30sec>, <45sec> and <60sec>.
- <My Device Information> : You can check the name and address of your player.

### Rename



- 1 Press the [MENU] button in the <My Device Information> window.
- 2 Press the [ ^ v ] button to select <Edit Device Name> and then press the [ ::: ] button.
  - The Edit Device Name window appears.
- 3 Use the [ ^ v < > ] and [ ::: ] buttons to rename the device.
  - [ REC ] : Pressing the [A → B/●] button will switch the mode in the sequence of Number → English Upper Case → English Lower Case.
  - [ ← ] : You can clear the characters from the end one at a time.
  - [ OK ] : Confirm your change.

# Using Bluetooth menu

## To disconnect the device



- 1** Press the [ ^ v ] button to select <Bluetooth> and then press the [ :::: ] button.
- 2** Press the [MENU] button in Bluetooth menu
- 3** Press the [ ^ v ] button to select <Disconnect> and then press the [ :::: ] button.
- 4** Press the [ < > ] button to select <Yes> and press the [ :::: ] button.
  - The currently connected device will be disconnected.

## To check the device connected



- 1** Press the [ ^ v ] button to select <Bluetooth> and then press the [ :::: ] button.
- 2** Press the [MENU] button in Bluetooth menu.
- 3** Press the [ ^ v ] button to select <Connected Device> and then press the [ :::: ] button.
  - You can see a list of connected devices.

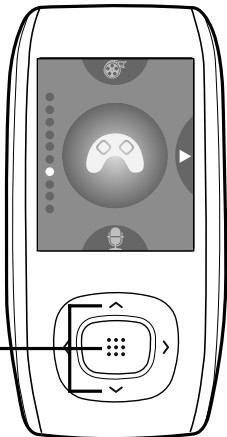
To exit the menu,  
press the [MENU] button.

# Game

You can enjoy Base Ball and Pizza Delivery games.

**Before you start!**

- Connect the earphones, then turn on the player, and check the battery.



- 1** Press the [ ^ v ] button to select <Game> and then press the [ :::: ] button.
  - The Game menu appears.
- 2** Press the [ ^ v ] button to select the desired game and then press the [ :::: ] button.

**NOTE**

- The bundle games can be added or changed without notice.

## Game (Continued)

### Base Ball



This is a family game that provides you with dynamic animation and various characters, making you feel yourself in a real baseball stadium.

- Press the [ ^ v < > ] button to select a menu or function.
- Press the [ ::: ] button to pitch or hit the ball.

### Pizza Deliver

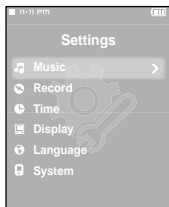


A pizza delivery boy on a motor bike gets his way to the destination dodging about obstacles on the road or pitfalls.

- Press the [ ::: ] button to jump up

# Setting Music

You can set detailed settings for music playback.



**1** Press the [ ^ v ] button to select <Settings> and then press the [ :::: ] button.

- The Settings menu appears.

**2** Press the [ ^ v ] button to select <Music> and then press the [ :::: ] button.

- The Music menu appears.

**3** Use the [ ^ v < > ] and [ :::: ] buttons to set the desired functions

**NOTE**

- Button functions to use during setting.
  - Press the [ < ] button to move to the previous item.
  - Press the [ > ] button to move to the next item.
  - Press the [ ^ v ] button to move up or down through the current menu.
  - Press the [ :::: ] button to select or save the menu.
- If there is no button operation during about 1 minute in the Settings screen, settings will be canceled and returned to the previous function.

## Setting Music (Continued)

- **<Street mode>**: Allows you to enjoy the music outdoors as clearly as indoors. You can select either <On> or <Off>.
- **<DNSe>** : You can select a suitable sound for each music genre. Select either <3D-User> <3D-Studio> <3D-Stage> <3D-Club> <Normal> <Rock> <House> <Dance> <Jazz> <Ballad> <Rhythm & Blues> <Classical> or <User EQ>.
- **<3D User Set>** : Sets 3D sound effect and bass enhancement. 3D can be set between 0~5 levels, and Bass Enhance between 0~3 levels. After you set <3D User Set>, select <3D User> from <DNSe>.
- **<User EQ Set>** : Directly select a sound effect (EQ). After you set <User EQ Set>, select <User EQ> from <DNSe>.
- **<Play Mode>** : Select playback mode such as repeat settings. Select from <Normal> <Repeat > <Repeat One> and <Shuffle>.
- **<Play Speed>** : Adjust the playback speed of music/voice recording. Select either <-3> <-2> <-1> <0> (Normal) <+1> <+2> <+3>. (The higher the number is, the faster the playback speed is.)
- **<Skip Interval>** : Set the playback interval when you press the [ < > ] button during playback. Select either <1 Track> <3 sec> <5 sec> <7 sec> <10 sec> <30 sec> or <1 min>.

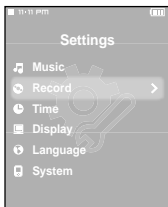
**NOTE**

- For a VBR or Ogg file, the Skip Interval may not be exact.
- During playback of an Ogg Q10 file, <Street mode> <DNSe> and <Play Speed> modes will be deactivated.
- **What is DNSe?**

DNSe is a sound effect function for MP3 players developed by Samsung and consists of 3D and Street modes. The 3D adds a stereophonic sound effect to the music and the Street mode provides an automatic volume control function that amplifies quiet sounds in noisy street environments.

# Setting Record

You can refine your recording options for FM radio and voice recording.



**1** Press the [ ^ v ] button to select <Settings> and then press the [ ⋮ ] button.

- The Settings menu appears.

**2** Press the [ ^ v ] button to select <Record> and then press the [ ⋮ ] button.

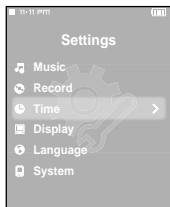
- The Record menu appears.

**3** Use the [ ^ v < > ] and [ ⋮ ] buttons to set the desired functions

- **<FM Recording Bit Rate>** : You can choose the recording quality for FM radio. Select one from <96kbps> <128kbps> <160kbps> <192kbps>. (The greater the number is, the better the quality is but the file size is bigger)
- **<Voice Recording Bit Rate>** : You can select the voice recording quality. Select one from <32kbps> <64kbps> <96kbps> <128kbps>. (The greater the number is, the better the quality is but the file size is bigger)

# Setting Time

You can set functions related to the Sleep Timer and Auto Power Off.

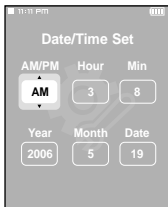
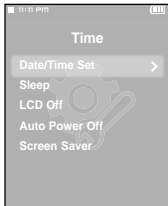


- 1 Press the [ ^ v ] button to select <Settings> and then press the [ :::] button.
  - The Settings menu appears.
  
- 2 Press the [ ^ v ] button to select <Time> and then press the [ :::] button.
  - The Time menu appears.
  
- 3 Use the [ ^ v < > ] and [ :::] buttons to set the desired functions

- **<Date/Time Set>** : You can set the current time and date. ► Page 73
- **<Sleep Timer>** : Turns off power automatically after the preset time. Select either <Off> <15 min > <30 min> <60 min> <90 min> or <120 min>.
- **<LCD Off>** : If no button is pressed within the time set shown below, the display screen will automatically turn off. Select either <15 sec> <30 sec> <1 min> <3 min> <5 min> or <Always On>. Press any key to turn it back on.
- **<Auto Power Off>** : Automatically turns power off when there is no button operation after the preset time in the pause mode. Select either <15 sec> <30 sec> <1 min> <3min> or <5 min>.
- **<Screen Saver>** : If no button is pressed within the time set shown below in music mode, the player will display the screen saver image. Select either <Off> <15 sec> <30 sec> < 1 min > <3 min > or <5min>.



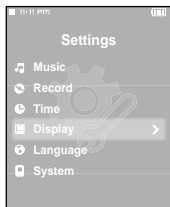
## Date/Time Setting



- 1** Press the [ ^ v ] button to select <Date/Time Set> and then press the [ ::: ] button.
- 2** Press the [ < > ] button to move to <AM/PM, Hour, Minute, Year, Month, Date> and press the [ ^ v ] to set it.
- 3** Press the [ ::: ] button.
  - The Confirmation window will appear.
- 4** Press the [ < > ] button to select <Yes> and press the [ ::: ] button.
  - The set time/date will be saved.
  - <No> will cancel the time setting.

# Setting Display

You can set the display options including color theme and music background image.



**1** Press the [ ^ v ] button to select <Settings> and then press the [ ::: ] button.

- The Settings menu appears.

**2** Press the [ ^ v ] button to select <Display> and then press the [ ::: ] button.

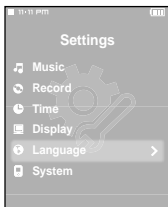
- The Display menu appears.

**3** Use the [ ^ v < > ] and [ ::: ] buttons to set the desired functions

- **<Color Theme>** : You can set the background color for the display screen. Choose one from the 6 color theme options. When <Random> is selected, each time you turn off and turn on the power, the background color will be changed.
- **<Music Background>** : You can select the background image to add to your listening experience. Select either <FLASH 1> <FLASH 2> <FLASH 3> <Album Cover> <Photo> or <Auto>. Selecting <Auto> will change the background image by picking one from <FLASH1> to <FLASH3> each time a different file is played.
- **<Text Viewer Color>** : You can set the background color for text. Choose one from 6 colors.
- **<Text Viewer Type>** : You can choose to view the text either vertically or horizontally. You can select either <Vertical> or <Horizontal>.
- **<LCD Brightness>** : You can adjust the brightness of the display light. Select one from <0-10>.

# Setting Language

Set the language for the menu and track information (ID3 Tag).



**1** Press the [ ^ v ] button to select <Settings> and then press the [ :::: ] button.

- The Settings menu appears.

**2** Press the [ ^ v ] button to select <Language> and then press the [ :::: ] button.

- The Language menu appears.

**3** Use the [ ^ v < > ] and [ :::: ] buttons to set the desired functions

- **<Menu>** : Set the menu language. Select from < 한국어 > <English> <Français> <Deutsch> <Italiano> <日本語> <汉语(简体)> <Español> <漢語(繁體)> <Русский > <Magyar> <Nederlands> <Polski> <Português> <Svenska> <ไทย >.
- **<ID3 Tag>** : Set the track information language. Select from <Afrikaans> <Basque> <Catalan> <Chinese(S)> <Chinese(T)> <Czech> <Danish> <Dutch> <English> <Estonian> <Finnish> <French> <German> <Greek> <Hrvatski> <Hungarian> <Icelandic> <Italian> <Japanese> <Korean> <Norwegian> <Polish> <Portuguese> <Romany> <Russian> <Slovak> <Slovene> <Spanish> <Swedish> <Turkish> and <Vietnamese>.



## NOTE

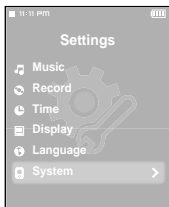
- The supported languages can be changed or added.

### ■ What is ID3-Tag?

This is what is attached to an MP3 to carry information relevant to the file, such as the title, artist, album, year, genre and a comment field.

# Setting System

You can set the booting mode, resume and button sound.



**1** Press the [ ^ v ] button to select <Settings> and then press the [ ::: ] button.

- The Settings menu appears.

**2** Press the [ ^ v ] button to select <System> and then press the [ ::: ] button.

- The System menu appears.

**3** Use the [ ^ v < > ] and [ ::: ] buttons to set the desired functions

- **<Booting Mode>** : You can set the start window after the system reboots. Select either <Main Menu> and <Last Played>.
- **<Resume>** : Specifies the starting point to restart playback after playback is stopped. If set to <Off>, the last file will play from the beginning. If set to <On>, the last file will play from the point it was previously stopped.
- **<Button Sound>** : Sets the beep sound for button operations to on or off. Select either <On> or <Off>.
- **<Volume Limit>** : You can avoid hearing damage by setting the limit of the volume when using the ear-phone. <On> will limit the maximum volume level up to 20. The maximum volume level when Volume Limit is set to <Off> is 40.
- **<Default Set>** : Returns all settings to the default value. Select from <Yes> and <No>.
  - ▶ Page 77
- **<Memory>** : Indicates the remaining memory capacity. <Used> indicates the usage, <Available> indicates the remaining capacity and <Total> indicates the total memory capacity.
- **<Firmware Version>** : Displays the current firmware version.

## Default Set



Press the [ < > ] button to select either <Yes> or <No> and then press the [ :::: ] button.

- <Yes> : Initializes all settings to default.
- <No> : Cancels default settings.



### ■ Regarding the Built-In Memory

**NOTE** The actual built-in memory available is slightly less than indicated as the internal firmware uses a portion of the memory.

# Troubleshooting

If a malfunction is experienced, check the following.

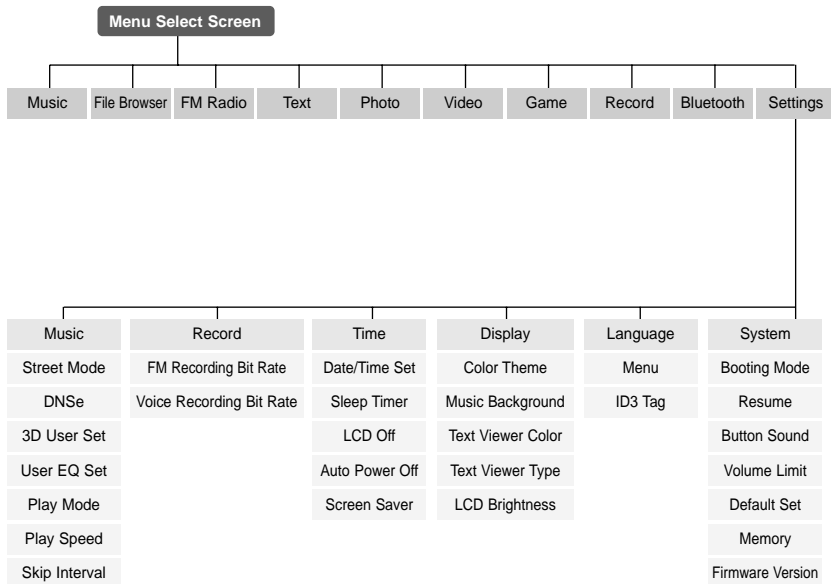
If the problem persists, contact a Samsung Service Center near you.

Problem	Check points & Troubleshooting
<b>Power will not turn on.</b>	<ul style="list-style-type: none"><li>■ Power will not turn on if the battery is fully discharged. Recharge the battery and turn the power on again.</li><li>■ Press and hold the [MENU] and [A ← B/●] buttons at the same time to reset the system.</li></ul>
<b>Buttons do not work.</b>	<ul style="list-style-type: none"><li>■ Check if the [HOLD] switch is in the direction of the arrow position.</li><li>■ Check if you pressed the right button, then press again.</li><li>■ Press and hold the [MENU] and [A ← B/●] buttons at the same time to reset the system.</li></ul>
<b>The screen will not turn on.</b>	<ul style="list-style-type: none"><li>■ The screen may not be visible under direct sunlight.</li><li>■ When &lt;LCD Off&gt; is selected from &lt;Settings&gt; → &lt;Display&gt;, the LCD can be turn off. Press any button and see if it turns on.</li></ul>
<b>Power is turning off.</b>	The power is automatically turned off when the battery is fully discharged. Recharge the battery.
<b>Battery life differs from the Manual.</b>	<ul style="list-style-type: none"><li>■ The battery time can vary, depending on the sound mode and display setting.</li><li>■ Product life may be shortened when left for extended periods in low or high temperatures.</li></ul>
<b>Program Malfunction</b>	Please check if your PC requirements are met.
<b>Connection to your PC is disabled.</b>	Press <Start> on the toolbar of your PC to run Windows Update. Select Key Updates and Service Packs, then update all. Reboot your PC and reconnect.
<b>The file transfer rate is too low.</b>	<ul style="list-style-type: none"><li>■ If you have formatted the player on Windows 2000, the file transfer can be delayed. Format the player on Windows XP and try again. If you are running multiple programs including Media Studio on your PC, the file transfer rate will be low. So make sure to exit unnecessary programs before proceeding.</li></ul>

Problem	Check points & Troubleshooting
<b>Playing is disabled.</b>	<ul style="list-style-type: none"> <li>■ Check if the available file has been saved in the memory.</li> <li>■ Check if the music file is damaged.</li> <li>■ Check if there is enough battery power.</li> </ul>
<b>File upload is disabled.</b>	<ul style="list-style-type: none"> <li>■ Check if the USB cable is securely connected. Reconnect if necessary.</li> <li>■ Check if the memory is full.</li> <li>■ Press and hold the [MENU] and [A ← B/ ●] buttons at the same time to reset the system.</li> </ul>
<b>Files or Data are Missing.</b>	<p>Check if the USB cable has been disconnected during file or data transmission. If this is the case, it may cause serious damage not only to files/data but also to the product. You have to be extra cautious as Samsung is not held responsible for data loss.</p>
<b>Abnormal Play Time Display during Play.</b>	<p>Check if the file is in VBR (Variable Bit Rate) format.</p>
<b>Abnormal Display of File Name.</b>	<p>Move to &lt;Settings&gt; → &lt;Language&gt; → &lt;ID3 Tag&gt; in the Menu screen and set an appropriate language.</p>
<b>The product is hot.</b>	<p>Heat may be generated during recharging. This has no effect on the product life or functions.</p>
<b>I couldn't see a movie with a message popping up.</b>	<p>Try to download the movie clip through Media Studio again.</p>

# Menu Tree

You can quickly view the menu structure.



\* The Bluetooth feature can be applied only for the appropriate model ((YP-T9B, T9JB).



# Product Specifications

Model Name		YP-T9
Power		3.7V (Li-Polymer Rechargeable)
Built-in Battery Power		740 mAh
File	Compatibility	AUDIO: MPEG1/2/2.5 Layer3(8kbps~320kbps, 8kHz~48kHz) WMA(5kbps~320kbps,8kHz~48kHz), Ogg(Q-1~Q10) Video: SVI (Video: MPEG4, Audio: MP3 (44.1kHz, 128kbps), Resolution: 208X176, Frame Rate: 15fps) Image: JPG (Progressive, Sequential Scanning, File Size: less than 3MB)
Supported Number of folders and Files		Folder: Max. 500, File: Max. 5000(Include folder)
Earphone Output		20mW(France 5mW/CH)(16Ω)
Output Frequency Range		20Hz~20KHz
Noise Ratio		85 dB with 20kHz LPF(based on 1KHz 0 dB)
Play Time		Maximum of 30 hours for music playback (based on: MP3 128kbps, Volume: 20, Normal Mode), Maximum of 6 hours for video playback
Temperature Range for Operation		-5~35 °C (23~95°F)
Case		Plastics
Weight		49g
Dimension (WxHxD)		42.5 X 83.1 X 11.0 mm

Radio	FM Frequency	87.5~108.0MHz	FM T.H.D	1%
	FM Signal to Noise Ratio	55dB	FM Useable Sensitivity	10dBμ

Blue tooth	Frequency Range:	Transmit/Receive : 2402~2480 MHz	Module	BTTZ0502SA
	Spec Version Supported	1.2	Transmission Output	2.4 mW

- The contents of this Manual are subject to change without prior notice for further improvement.

# Contact SAMSUNG WORLD WIDE

If you have any questions or comments relating to Samsung products, please contact the SAMSUNG customer care center.

Country	Customer Care Center	Web Site
CANADA	1-800-SAMSUNG (7267864)	<a href="http://www.samsung.ca">www.samsung.ca</a>
MEXICO	01-800-SAMSUNG (7267864)	<a href="http://www.samsung.com/mx">www.samsung.com/mx</a>
U.S.A	1-800-SAMSUNG (7267864)	<a href="http://www.samsung.com">www.samsung.com</a>
ARGENTINE	0800-333-3733	<a href="http://www.samsung.com/ar">www.samsung.com/ar</a>
BRAZIL	0800-124-421	<a href="http://www.samsung.com/br">www.samsung.com/br</a>
CHILE	800-726-7864(SAMSUNG)	<a href="http://www.samsung.com/cl">www.samsung.com/cl</a>
COSTA RICA	0-800-507-7267	<a href="http://www.samsung.com/latin">www.samsung.com/latin</a>
ECUADOR	1-800-10-7267	<a href="http://www.samsung.com/latin">www.samsung.com/latin</a>
EL SALVADOR	800-6225	<a href="http://www.samsung.com/latin">www.samsung.com/latin</a>
GUATEMALA	1-800-299-0013	<a href="http://www.samsung.com/latin">www.samsung.com/latin</a>
JAMAICA	1-800-234-7267	<a href="http://www.samsung.com/latin">www.samsung.com/latin</a>
PANAMA	800-7267	<a href="http://www.samsung.com/latin">www.samsung.com/latin</a>
PUERTO RICO	1-800-682-3180	<a href="http://www.samsung.com/latin">www.samsung.com/latin</a>
REP. DOMINICA	1-800-751-2676	<a href="http://www.samsung.com/latin">www.samsung.com/latin</a>
TRINIDAD & TOBAGO	1-800-7267-864	<a href="http://www.samsung.com/latin">www.samsung.com/latin</a>
VENEZUELA	1-800-100-5303	<a href="http://www.samsung.com/latin">www.samsung.com/latin</a>
BELGIUM	02 201 2418	<a href="http://www.samsung.com/be">www.samsung.com/be</a>
CZECH REPUBLIC	844 000 844	<a href="http://www.samsung.com/cz">www.samsung.com/cz</a>
DENMARK	38 322 887	<a href="http://www.samsung.com/dk">www.samsung.com/dk</a>
FINLAND	09 693 79 554	<a href="http://www.samsung.com/fi">www.samsung.com/fi</a>
FRANCE	08 25 08 65 65 (0,15/min)	<a href="http://www.samsung.fr">www.samsung.fr</a>
GERMANY	01805 - 121213 ( 0,12/Min)	<a href="http://www.samsung.de">www.samsung.de</a>

<b>Country</b>	<b>Customer Care Center</b>	<b>Web Site</b>
HUNGARY	06 40 985 985	<a href="http://www.samsung.com/hu">www.samsung.com/hu</a>
ITALIA	199 153 153	<a href="http://www.samsung.com/it">www.samsung.com/it</a>
LUXEMBURG	02 261 03 710	<a href="http://www.samsung.lu">www.samsung.lu</a>
NETHERLANDS	0900 20 200 88	<a href="http://www.samsung.com/nl">www.samsung.com/nl</a>
NORWAY	231 627 22	<a href="http://www.samsung.com/no">www.samsung.com/no</a>
POLAND	0 801 801 881	<a href="http://www.samsung.com/pl">www.samsung.com/pl</a>
PORTUGAL	808 200 128	<a href="http://www.samsung.com/pt">www.samsung.com/pt</a>
SLOVAKIA	0850 123 989	<a href="http://www.samsung.com/sk">www.samsung.com/sk</a>
SPAIN	902 10 11 30	<a href="http://www.samsung.com/es">www.samsung.com/es</a>
SWEDEN	08 585 367 87	<a href="http://www.samsung.com/se">www.samsung.com/se</a>
U.K	0870 242 0303	<a href="http://www.samsung.co.uk">www.samsung.co.uk</a>
RUSSIA	8-800-200-0400	<a href="http://www.samsung.ru">www.samsung.ru</a>
UKRAINE	8-800-502-0000	<a href="http://www.samsung.com/ur">www.samsung.com/ur</a>
AUSTRALIA	1300 362 603	<a href="http://www.samsung.com/au">www.samsung.com/au</a>
CHINA	800-810-5858 , 010- 6475 1880	<a href="http://www.samsung.com.cn">www.samsung.com.cn</a>
HONG KONG	2862 6001	<a href="http://www.samsung.com/hk">www.samsung.com/hk</a>
INDIA	3030 82821600 1100 11	<a href="http://www.samsung.com/in">www.samsung.com/in</a>
INDONESIA	0800-112-8888	<a href="http://www.samsung.com/id">www.samsung.com/id</a>
JAPAN	0120-327-527	<a href="http://www.samsung.com/jp">www.samsung.com/jp</a>
MALAYSIA	1800-88-9999	<a href="http://www.samsung.com/my">www.samsung.com/my</a>
PHILIPPINES	1800-10-SAMSUNG (7267864)	<a href="http://www.samsung.com/ph">www.samsung.com/ph</a>
SINGAPORE	1800-SAMSUNG (7267864)	<a href="http://www.samsung.com/sg">www.samsung.com/sg</a>
THAILAND	1800-29-3232 / 02-689-3232	<a href="http://www.samsung.com/th">www.samsung.com/th</a>
TAIWAN	0800-329-999	<a href="http://www.samsung.com/tw">www.samsung.com/tw</a>
VIETNAM	1 800 588 889	<a href="http://www.samsung.com/vn">www.samsung.com/vn</a>
SOUTH AFRICA	0860 7267864 (SAMSUNG)	<a href="http://www.samsung.com/za">www.samsung.com/za</a>
U.A.E	800SAMSUNG (7267864)	<a href="http://www.samsung.com/mea">www.samsung.com/mea</a>

# License

The product unit accompanying this user manual is licensed under certain intellectual property rights of certain third parties. This license is limited to private non-commercial use by end-user consumers for licensed contents.

No rights are granted for commercial use. The license does not cover any product unit other than this product unit and the license does not extend to any unlicensed product unit or process conforming to ISO/IEC 11172-3 or ISO/IEC 13818-3 used or sold in combination with this product unit. The license only covers the use of this product unit to encode and/or decode audio files conforming to the ISO/IEC 11172-3 or ISO/IEC 13818-3. No rights are granted under this license for product features or functions that do not conform to the ISO/IEC 11172-3 or ISO/IEC 13818-3.

## — EUROPE ONLY —

This marking shown on the product or its literature, indicates that it should not be disposed with other household wastes at the end of its working life.

To prevent possible harm to the environment or human health from uncontrolled waste disposal, please separate this from other types of wastes and recycle it responsibly to promote the sustainable reuse of material resources.

Household users should contact either the retailer where they purchased this product, or their local government office, for details of where and how they can take this item for environmentally safe recycling. Business users should contact their supplier and check the terms and conditions of the purchase contract.

This product should not be mixed with other commercial wastes for disposal.

