

MOTO™ W233 renew

Make sure you stay connected to your friends, your family, and the environment. Introducing Motorola's first environmentally responsible phone: the Moto W233 Renew. It isn't just for eco-conscious consumers, but for us to take a step in the right direction in helping the planet. Communication is important, but responsible communication is something more.

Made from plastics that contain recycled water bottles and CarbonFree™ certified, the Moto W233 Renew is cutting down on your carbon footprint by cutting down on its own. Through an alliance with Carbonfund.org, we offset our remaining carbon output by investing in renewable energy sources.

Phones normally come in too-big boxes with a lot of paper products inside. Not the Moto W233 Renew. Its reduced package size and weight reduce transportation emissions and paper use. On top of all that, it comes with a postage-paid envelope for easily recycling your old phone.

A best-in-class talk time of up to 9 hours means you can charge less and conserve more.



TUTORIAL



Additional Features

- 100% recyclable phone housing.
- The first CarbonFree™ mobile device on the market.
- The Moto W233 Renew is 70% recyclable, promoting future eco-responsibility.
- All paper in box materials are printed on 100% post consumer recycled paper.
- Between 2000 and 2007, Motorola reduced its carbon footprint by 25%. Moto W233 Renew is another step in the right direction.



For additional support visit: www.motorola.com/support



getting to know your phone



MOTOROLA and the Stylized M Logo are registered in the US Patent & Trademark Office.
© Motorola, Inc. 2009

Certain mobile phone features are dependent on the capabilities and settings of your service provider's network. Additionally, certain features may not be activated by your service provider, and/or the provider's network settings may limit the feature's functionality. Always contact your service provider about feature availability and functionality. All features, functionality, and other product specifications, as well as the information contained in this tutorial, are based on the latest available information and believed to be accurate at the time of publication. Motorola reserves the right to change or modify any information or specifications without notice or obligation.


Service dependent features may vary. Screen images may be simulated or enhanced to show detail.

Note: Your phone may not appear exactly as the phone image above, however, all key locations, sequences, and functions remain the same.



make, end, and answer calls

1.

To make a call:
On the home screen, enter a number and press .


Tip: Press **Delete** to delete the last number. Press **Store**, and then **Done** to add the number to your contacts.



2.

To end a call:
Press .

3.

To answer a call:
When your phone rings or vibrates, press .

Tip: To answer with any key, go to main menu and select **Settings > In Call Setup**. Set **Answer Options** to **Multi-key On**.



save and call contacts

You can save up to 500 contacts!

1.

To save a contact:

On the home screen, enter the number and press **Store**.



2.

Enter the contact details.

When you are finished press **Done**.



3.

To call a contact:

On the home screen, press **Phonebook**.



4.

Select the contact and press .

Tip: To find contacts in the list, enter the first letters of the contact.





send a text message

Your phone can store up to 500 SMS messages!

1.

On the home screen, press **Messages** > **Create** > **Create Message**.



2.

Select the message type: **SMS/EMS** or **MMS**.



3.

Enter your message and press **Ok**.

Tip: In the text entry screen, press **#** to switch text modes.



4.

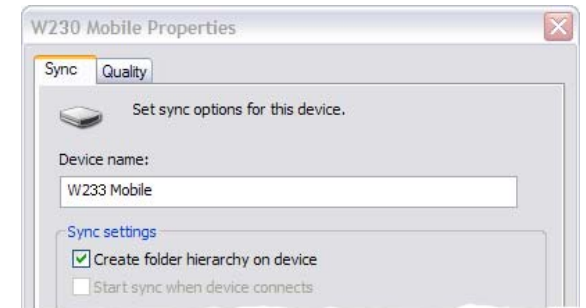
Scroll to the recipient(s) and press **Add**. Press **Send** to send the message.



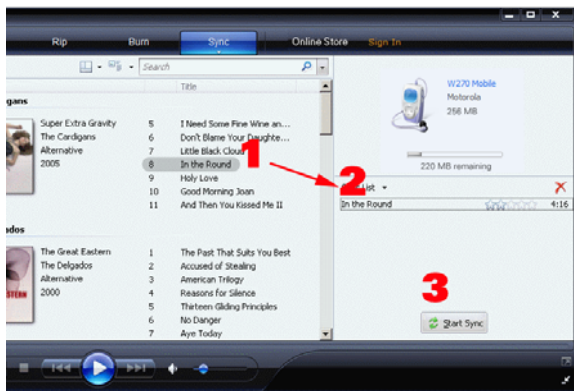


transfer music to your phone

- 1.** Connect your phone and PC using a USB cable. At the “Connect phone as storage device” prompt, press **Yes**.
- 2.** Open Windows Media Player and click the **Sync** tab. If this is the first time connecting, you are prompted to complete the Device Setup screen. Leave name as is and click **Finish**.
- 3.** If this is the first time connecting, click the **Sync** tab again and select **W233 Mobile > Advanced Options**. Check **Create folder hierarchy on device**, then click **OK**.



- 4.** Drag the songs or playlists you want to transfer to the **Sync List** (see 1 and 2) and click **Start Sync** (see 3). Your songs are transferred.
- 5.** Disconnect your phone when prompted by Windows Media Player.

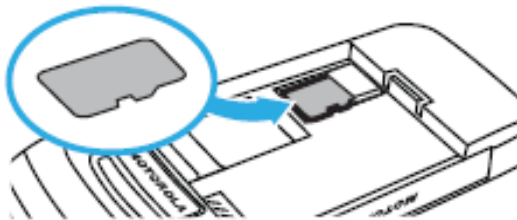





play music on my phone

To use the music player, insert a microSD memory card, an optional accessory.

The music player supports MP3, MIDI, iMelody, and AMR file formats.







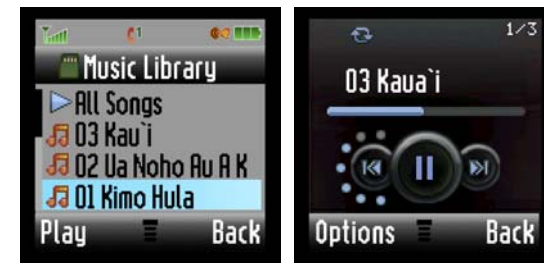
1. On the home screen, press  > **Multimedia** > **Music Library**.



2. Select a song and press **Play**.

To control music:

-  pause or  play
-  next song; hold for fast forward
-  previous song; hold for rewind



Tip:

To switch between music stored on the memory card and music stored on your phone memory, press  > **Multimedia** > **Music Library**  > **Switch Storage Devices**.



customize my phone

1.

To create home screen shortcuts, press **⬇️** > **Personalize** > **Home Screen** > **Home Keys**.

Select **Up**, **Down**, **Left**, **Right**, or a soft key and press **Change**. Select the feature you want to assign.



2.

To change the order of the main menu, press **⬇️** > **Personalize** > **Main Menu** > **Reorder**. Scroll to the item you want to move and press **Grab**. Then scroll to the destination location and press **Insert** > **Done**.



3.

To change the wallpaper or screen saver, press **⬇️** > **Personalize** > **Wallpaper** or **Screen Saver**.



4.

To personalize your ring style, press **⬇️** > **Settings** > **Ring Style** > **Style**.

Scroll to the style, press **⬇️**. Select **style Detail**, and customize the various rings.





transfer files with a USB cable

1.

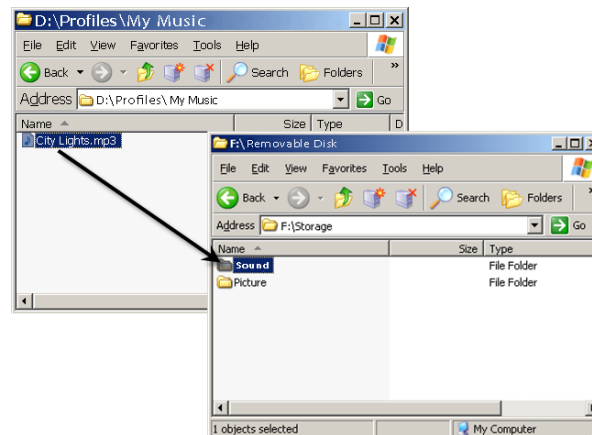
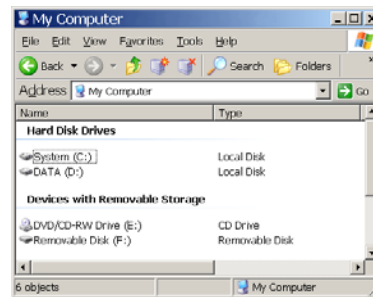
Connect your phone and PC using a USB cable.



2.

Use the **My Computer** window to find Removable Device.

Drag and drop files such as music from your PC to your phone.



3.

When finished, remove the phone from your PC by using the **Safely Remove Hardware** icon at the bottom of your PC screen. Then disconnect the USB cable.



Note: To charge your phone with a USB cable, download the USB charging driver onto your PC, at www.motorola.com/support/w233/




access the web



This feature is network, SIM card, or subscription dependent and may not be available in all areas. Contact your service provider for more information.

1.

To launch the web browser, press  > **Web Access** > **Start Browser**.

2.

To download a picture, sound, or MMS template from a web page, go to the media file page, highlight the file, then press **Select** > **Store**.

